



**VERIFIED  
FACILITATOR**  
PROGRAM

**CATALOG**



## Overview

The role of a MPI Chapter Facilitator goes far beyond the fundamentals of facilitation experience and requires a unique additional perspective of having come from being an MPI Member and, more importantly, having held a leadership role.

Chapter Facilitators are required to have a comprehensive understanding of and be well-versed in MPI's overall global objectives for its Chapters and the global brand while bringing an effective and proven facilitation and training skill set to this role.

The MPI Facilitator and Chapter Training Committee (FACT), Chapter Member Advisory Council (CMAC) and their subcommittees worked to better define our MPI Chapter Facilitator program to be a more streamlined process from initial application to post-retreat review. New to the program is a requirement of a Chapter Facilitator satisfaction score of 3.75% or higher from Chapter retreat feedback surveys. This ongoing evaluation will ensure our Chapters are receiving the best of the best from this program commitment. All MPI Chapters will be required to engage an MPI-Verified Facilitator for chapter retreats beginning July 1, 2022.

Following is a complete list of MPI-Verified Facilitators for your consideration. After reviewing their information, plan to interview three Facilitators during your selection process.

### Best Practices for Engagement:

- Consider skill level, experience, cultural fit, facilitator strengths and your budget.
- Plan to use the same facilitator for both your annual and mid-year retreats.
- Engage your Facilitator early to provide ample time for retreat planning.
- Engage your Chapter Operations Manager during the retreat planning process.
- Be transparent about chapter challenges and opportunities.
- Consider your Board's bandwidth when determining the length of your retreat (annual retreats are typically 2 full days, mid-year retreats can often be accomplished in 1 full day).
- Communicate early and often with your Board about pre-work to set the expectations for your time together at the retreat.

**Paul Bailey, MBA, HMCC, ISO 20121**

**Halifax, Nova Scotia**

**902-818-1822**

**paul@paulbailey.ca**



## **MPI Leadership Experience**

- President, MPI Atlantic Canada Chapter, 2023/24
- Incoming President and Immediate Past President, MPI Atlantic Canada Chapter
- VP Sponsorship, MPI Atlantic Canada Chapter
- MPI Global RISE Awards Committee
- Led MPI Atlantic Canada through a period of rebuilding, stabilization, and renewed performance, helping the Chapter strengthen governance, restore confidence, rebuild volunteer momentum, and align strategy with financial reality.
- Contributed to MPI Atlantic Canada earning the 2025 MPI RISE Award, 2024 MPI Foundation Chapter Champion recognition, 2024 Chapter of Excellence designation, and multi-year top-performing Chapter status.

## **Facilitation Strengths**

- Chapter rebuilding, stabilization, and momentum planning
- Helping small and medium-sized Chapters move from survival mode to strategic action and accelerating to results
- Cross-industry strategy, business planning, and stakeholder alignment
- Governance, bylaws, board alignment, and decision structure
- Financial discipline, budget alignment, and realistic growth planning
- Volunteer leadership development, succession planning, and role clarity
- Applied learning, facilitation, and training through academic instruction
- Constructive conflict resolution and turning discussion into accountable action

## **Biography**

Paul Bailey is an international sales, strategy, and association leader based in Halifax, Nova Scotia. His facilitation work is grounded in a practical belief: Chapters do not fail because they lack passionate people. They struggle when passion is not supported by structure, clarity, financial discipline, and a plan people can actually execute.

As President of MPI Atlantic Canada, Paul helped lead the Chapter through a period of rebuilding and renewed performance. The work was not cosmetic. It involved governance reinforcement, financial discipline, volunteer re-engagement, leadership succession, role clarity, and a renewed focus on converting ambition into action. That rebuilding journey contributed to MPI Atlantic Canada earning the 2025 MPI RISE Award, 2024 MPI Foundation Chapter Champion recognition, 2024 Chapter of Excellence designation, and recognition as a top-performing Chapter across multiple years.

Paul is especially well suited to work with small and medium-sized Chapters that are trying to get back on track, reach the next level, or simply get moving with confidence. He understands the realities of volunteer bandwidth, leadership fatigue, unclear accountability, limited budgets, and the pressure to deliver meaningful member value with finite resources. His approach helps Boards identify what is working, name what is not, and build a realistic path forward.

Paul brings a broad cross-industry perspective to facilitation. His career has spanned destination marketing, international conference attraction, hospitality and tourism, international automotive advertising, agency leadership, entrepreneurship, consulting, and post-secondary education. That range allows him to help Chapters look beyond familiar assumptions and apply practical lessons from multiple sectors: brand positioning, revenue development, stakeholder alignment, governance, customer experience, business planning, and measurable return on investment.

He holds an MBA and certifications in ISO 20121, HMCC and SES, along with a CBT certification. Paul also teaches at Dalhousie University and Cape Breton University, where his courses connect event management, hospitality, tourism, business strategy, financial planning, procurement, governance, risk management, and sustainable economic impact. His academic work reinforces the same discipline he brings to facilitation: clear objectives, applied learning, measurable outcomes, and the ability to translate complex ideas into practical action.

His facilitation style is structured, candid, and outcome driven. Paul creates space for honest conversation while keeping the group focused on practical decisions: what matters most, what can be resourced, who owns it, and what happens next. He is comfortable navigating difficult conversations, but his goal is never conflict for its own sake. His goal is alignment, confidence, and forward motion.

Paul brings a strategic but human approach to facilitation. He listens carefully, challenges assumptions respectfully, and helps volunteer leaders separate personalities from issues so decisions can be made with clarity and trust. His goal is to help MPI Chapters leave the retreat not only inspired, but organized, aligned, and ready to execute.

## Mark Bice, CMP Fellow

Chagrin Falls, OH

508-314-1174

Bostonmeetingsgroupllc@yahoo.com



### MPI Leadership Experience

Past President of the New England Chapter, VP Finance, Membership, Education, Director Education, MPI Chapter Facilitator since 2015

### Facilitation Strengths

- Listening and ensuring clarity and understanding among Board members. Challenging Board members to think and act on attainable, measurable, goals.
- Helping Boards identify areas of strength and celebration as well as areas of need. Understanding that volunteer Boards and committee members need a special type of supportive and nurturing leadership style and assisting Board members in finding the right approach to success.
- Showing my appreciation for the passion and commitment I see in Board members every day.

### Biography

Mark is a seasoned meetings industry professional with experience in all aspects including operations, sales, marketing, and meeting planning.

He has worked as a Regional VP with HPN Global for 17 years and has been the Director of Meetings and Education for an Ohio-based Association for 8.

Loves and Passions: Good food, Dave Matthews Band, his two kids, and his labradoodle Lady.

## **Carolyn Browning, CMP, CMM**

Stamford, CT

203-240-1633

[crb@carolynbrowning.com](mailto:crb@carolynbrowning.com)

[www.carolynbrowning.com](http://www.carolynbrowning.com)



### **MPI Leadership Experience**

- Held several BOD positions for MPI WestField including a two-year term as President
- Helped develop and chair the MPI WestField Chapter's Leadership Development committee
- Participated on two MPI Global task forces

### **Facilitation Strengths**

- Able to keenly discern what's needed
- Able to hold a team to task
- Well organized
- Flexible – able to adapt agenda during retreat to meet changing needs

### **Biography**

Carolyn has held several MPI WestField Chapter Board & committee positions in her 20+ year membership with MPI, including a two-year term as President. She has earned many accolades through the MPI WestField Chapter, including Chapter Manager of the Year and in 2009 was given a Lifetime Achievement Award. She was a part of two MPI Global task forces. A lifelong learner, Carolyn earned her CMP and CMM and most recently her HMCC.

As of 2021, Carolyn has facilitated retreats for the MPI Carolinas, Heartland, Indiana, New Mexico, Washington State, WestField and Wisconsin chapters, as well as worked with other associations in their board planning efforts. She is an independent planner, runs CMP study groups and loves guest lecturing and teaching meeting planning courses at a local colleges and universities.

## David Chapa, CMP

Austin, TX  
847-877-9979  
drchapa@yahoo.com



### MPI Leadership Experience

Registration Committee  
Director of Industry Relations  
Director of Recruitment and Networking

### Facilitation Strengths

- Promotion of hearing all voices and extracting ideas and thoughts from all at the table (diversity/inclusion)
- Patience during difficult conversations while maintaining order/keeping the meeting timeline on track

### Biography

David Chapa, CMP, is a veteran of the events industry with over 20 years of meeting and events experience. He has been an MPI member since the 1990s and a proponent of continuing education. Professionally, David has worked hosting events at a conference center, worked for Texas State Associations, was an in-house contractor at a Fortune 100 company, and led corporate events for a Fortune 500 company.

His experience in meeting facilitation has been in corporate meetings focused on budget alignment/realignment, strategy, setting goals/objectives, and establishing and positioning a clear vision for the future.

David holds a BA from The University of Texas at Austin and an MBA from Regis University.

## Nicole Coon, CMP

Roseville, Minnesota  
651-500-0608  
nicole@greet.expert  
greet.expert



### MPI Leadership Experience

- MPI Minnesota Chapter President 2019-2020: as president, alongside current and future leaders of the chapter, developed, built, and implemented a strategic plan including key initiatives for MPI Minnesota. Preparation and engaging key stakeholders were paramount in the success of the plan. In addition, the chapter refreshed the mission and vision and identified five core values of the chapter. Clear, consistent communication at a grassroots level explained why the plan is vital for the chapter's future.
- VP of Education 2017-2018, Director of Education, 2016-2017: as VP of Education, along with select Board members, developed an Event Specification Guide as a master resource for events and programming. The ESG covers volunteers responsible, key contacts, event/venue info, venue details, event pricing for registration, event schedule, onsite announcements, learner objectives, session details, speaker info. and bio. The ESG also outlines a marketing plan, event sponsors and event specific benefits, revenue, and some accounting tracking. The board currently uses the ESG.
- Annual Education Conference Committee Chair 2015-2018

### Facilitation Strengths

- Membership
- Leadership Development
- Meeting/Event Planning
- Budgeting
- Strategic Planning
- Teamwork/Teambuilding
- Conflict Resolution

### Biography

Your chapter may be striving to stabilize or grow membership, or maybe your chapter is struggling with the budget and making tough decisions to yield different results or possibly is straining to keep your volunteers motivated and energized. I understand the challenges of encouraging your board, empowering them to lead their teams - pulling together for success. I. See. You. Chapter leader...really, I do.

As senior staff of an association, my tenure has given me the opportunity of experience in administration, education, awards, marketing, meeting and event planning, budgeting, strategic planning, sales, project management, leadership development, mentor, and coach.

## Nicole Coon, CMP (Cont.)

My role as your guide for your chapter's retreat is to understand your key goals, develop an agenda to address those items, be a neutral guide in engaging and thoughtful (and maybe uncomfortable) conversations, produce an effective event, with ownership from everyone involved and ensure that your board's objectives are met.

What you can expect from me as your facilitator:

- Engagement - cultivate an environment where everyone's voice can be heard - even opposing viewpoints, get the job done and have some fun.
- Neutrality - as an unbiased party I'm able to hear the conversation without any emotion tied to it and ask the tough questions.
- Flexibility - adjustments can be made to the agenda based on what the group needs compared to what was planned.
- Action- leaving the retreat your board will know next steps - who, what and when, helping you as a leader with expectations management.
- Connection – between your board members to one another, the ideas, and to the solutions that everyone can commit to.
- Authenticity – I'll bring my energetic and creative self with full gusto to support you.

Contact me to today about facilitating your chapter's next retreat.

### **Meet Nicole Coon**

Nicole Coon, CMP is the Vice President of Membership and Events for Housing First Minnesota who strategizes, designs, and markets a variety of events; directs membership recruitment and engagement. Recognized for creativity and attention to detail with comprehensive strength in strategic planning, stakeholder management, program development, marketing, meeting and event design, fiscal accountability, and customer service. Leveraging meetings and events as a means for advancing the organization's goals and objectives.

With over 10 years planning experience, Nicole launched her business: Greet. Offering planning, facilitation, and development services to organizations.

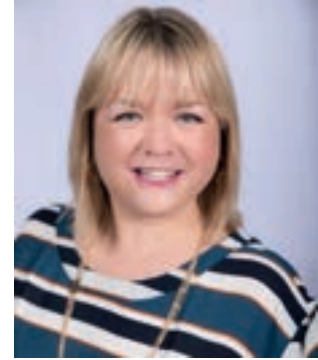
Nicole was MPI Member of the Year finalist and 2021 and Housing First Minnesota (formerly the Builders Association of the Twin Cities) was the 2015 MPI Rise Award recipient for Organizational Achievement. In addition, Nicole has won multiple MPI Minnesota Excellence in MPI (EMPI) awards for Meeting/Event of the Year and Outstanding Planner Member. Her personal mission is to make things lovely, and people feel extraordinary, she supports that through entertaining, volunteering, creating, and DIYing her home in Roseville Minnesota alongside her operations manager (puppy) Hazel.

## **Kate C. Copeland, MBA, CMM, CMP, CED, DES**

Manchester, CT

203-675-7314

kccfacilitating@gmail.com



### **MPI Leadership Experience**

MPI Member of the Year 2021

Past President, MPI Connecticut River Valley 2014-2017

Chapter & Membership Advisory Council (CMAC) Member 2020-Present

Meeting Executive Advisory Board Member 2019

WEC 2020 Content Committee Member 2019

Safety and Risk Management Advisory Board Member 2018

### **Facilitation Strengths**

- Strategy/Business Analysis
- Leadership Development
- Volunteer Management
- Membership Recruitment/Retention
- Finance

### **Biography**

Kate Copeland, MBA, CMM, CMP, CED, DES is the Assistant Director of University Events and Conference Services at the University of Connecticut, where she oversees a team of nine. She leads the department in event design and strategy and is an expert in technology initiatives, including Cvent, Gather, and virtual event platforms.

Kate has been heavily involved in MPI since joining in 2011. In 2014, Kate was awarded the MPI Connecticut River Valley (MPI CRV) President's Award for exceptional service to the chapter. She went on to serve as President of the MPI CRV chapter in 2015-2016. During her term, she led MPI CRV to the highest member satisfaction results in past 5 years, increased member recruitment by 83%, tripled the number of volunteers, and grew adjusted gross margin by 20%. Since then, Kate has continued to volunteer at both the chapter level and on various MPI Global committees and task forces. She currently serves on the MPI Chapter & Membership Advisory Council (CMAC), and the Facilitator and Chapter Training (FACT) sub-committee. Kate also began actively facilitating MPI chapter retreats in 2018. When it comes to MPI, Kate lives by the motto, "you get out what you put in." In recognition of her commitment to MPI, she has been awarded the 2021 MPI RISE Award for Member of the Year.

Kate earned her B.A. in Politics and Economics from Mount Holyoke College and her MBA with a concentration in management and marketing from the University of Connecticut. She is also the past Chairperson and CEO of Arts for Learning CT, the largest arts education non-profit in the state. Kate resides in Connecticut with her husband, son, and dog, Teddy.

## Steven G. Foster, CMP

Grapevine, TX  
(972) 877-9995  
[stevenfoster@foster-fathom.com](mailto:stevenfoster@foster-fathom.com)  
[www.foster-fathom.com](http://www.foster-fathom.com)



### MPI Leadership Experience

A 30-year member of MPI, Steven is a Past-President of the Dallas/Fort Worth Chapter and has served in a variety of roles on International Committees and Councils; including Facilitator and Chapter Training, RISE Awards, Chapter Advisory, Marketing and the MPI Foundation. He was among the first group of industry leaders to participate in MPI's Preferred Facilitator Program, and in 2004 he was inducted into the MPI International Community of Honorees.

### Facilitation Strengths

- Building a "Leadership Culture" of adaptable strategies, skills, and strengths
- Identifying what an organization needs in order to be successful and sustainable
- Purposeful influence development, leadership training and team-building models

### Biography

Steven G. Foster, CMP, is Managing Partner of Foster+Fathom, a Leadership Training and Goodness Development Group in Dallas, TX. An award-winning keynote speaker, author, business consultant, strategic planning facilitator and TRIBE-Builder, he collaborates with corporate, association and non-profit organizations to build high-performance teams, and was named a Small Business Success by Fortune Magazine.

**Tamra Gaines, CMM, CPC, ELI-MP**

**Tampa, Florida**

**214-564-8911**

**tamra@tamragaines.com**

**tamragaines.com**



### **MPI Leadership Experience**

- 30-year industry professional and MPI engagement
- Served 8 years on the MPI Dallas/Fort Worth Chapter in Membership, Special Events, Education and Office of the President
- Past President of MPI Dallas/Fort Worth Chapter remaining engaged after term on various committees
- Served the MPI Tampa Bay Area Chapter as VP Education in 2025
- Serves on the CMM Advisory Group for MPI HQ
- Host of MPItv for two years and actively submits articles for publications

### **Facilitation Strengths**

- Facilitation, Speaking and Coaching are part of Tamra's day-job.
- Certified Professional Coach
- Leadership Development
- Critical Conversations | Communication
- Time Management Strategies
- Building Confident Leaders
- Strategic | Succession Planning
- Additional certifications in DEI and John Maxwell Leadership Team
- Adaptable to meet the needs of your chapter

### **Biography**

Tamra Gaines brings 30 years of hospitality experience as a supplier, independent planner, and corporate and association planner with events ranging from intimate executive meetings to programs of 10,000+ attendees. Having risen through sales, incentive, and corporate travel to executive leadership, Tamra has also served on multiple boards within and outside the industry.

A recognized leader, keynote speaker, author, and coach, Tamra advises executives and planners on strengthening influence, leading with intention, and aligning performance with well-being in demanding environments. Her research across generations and industries informs her work as an MPI Verified Facilitator, helping participants think differently about how they show up, communicate, and lead.

At the core of her practice is a simple belief: confident leadership is the foundation of individual effectiveness and organizational sustainability, a philosophy she explores in her book, *The Pillars of Confidence*.

**Greg Heinze, CMP, PDM**

**Milwaukie, Oregon**

**503.799.8161**

**Gregory.Heinze.Sales@gmail.com**



## **MPI Leadership Experience**

- 2-term MPI Oregon President
- 2021 RISE Award Winning Chapter- Membership Engagement
- Served as chapter VP MarComm, Education, and Membership
- Served in all planning roles, including chair of the annual regional MPI Oregon & Washington State chapter “Cascadia Educational Conference”
- Currently part of the contracted “Cascadia Educational Conference” team, specializing in sponsorship and auction procurement
- Serving on MPI Global Chapter and Membership Advisory Council

## **Facilitation Strengths**

- Sponsorship and Fundraising at all levels- including “out-of-the-box” ideas
- Active, engaged goal setting assistance
- Volunteer Recruitment and Succession Planning
- Enthusiasm and energy, mixed with levity and humor

## **Biography**

Gregory Heinze is someone who believes the best part of this industry has always been the people. Throughout his career in hospitality — from hotels and global sales to third-party sourcing, destination marketing, and association leadership — he’s built his work around relationships, connection, and creating experiences that actually mean something. He brings a mix of strategy, storytelling, empathy, real-life industry experience, and humor into every conversation, retreat, and room he walks into.

A longtime leader within MPI, Greg has spent years giving back to the industry and helping build stronger communities within it. Most notably, he served two terms as president of the MPI Oregon Chapter, where he focused on creating authentic connection, strengthening engagement, and making sure people felt like they belonged. Alongside his leadership work, Greg has extensive experience in sponsorship sales and fundraising, helping organizations and chapters build meaningful partnerships that support long-term growth, education, and community impact. He’s passionate about creating sponsorship opportunities that feel collaborative and valuable for everyone involved — building relationships that go beyond transactions and create lasting engagement. His leadership style has always been rooted in honesty, encouragement, collaboration, and the belief that community matters most when people feel seen and supported.

Greg also helped support the merge and relaunch of the MPI Aloha Chapter, working alongside leaders to help rebuild momentum, reconnect members, and create a stronger path forward. He’s known for

bringing people together, navigating change with empathy, and creating space for honest conversations that move teams and organizations forward.

Outside of his volunteer leadership, Greg has facilitated retreats and collaborative experiences for years, both within and beyond the hospitality industry. His facilitation style is warm, real, engaging, and often filled with humor. He believes the best retreats are not just about checking boxes or getting through an agenda, but about building trust, creating connection, and giving people the opportunity to grow together. Whether working with boards, leadership teams, or volunteers, he creates environments where people can have authentic conversations, think differently, and leave feeling energized and connected.

At the heart of everything he does is a simple belief: hospitality and leadership are about how you make people feel. Welcomed. Heard. Inspired. Connected. That mindset continues to shape the way he leads, facilitates, builds relationships, and shows up in both his professional and personal life.

**Ms. Mitch Savoie Hill, CPC, CVP**

**Atlanta, GA**

**407-505-7667**

**Mitch@SavHillConsulting.com**

**www.savhillconsulting.com**



### **MPI Leadership Experience**

- MPI Georgia Vice President, Membership
- MPI Carolinas Vice President, EDI
- MPI WEC Speaker - San Francisco, San Antonio
- MPI Keynote Speaker - MPI Georgia, MPI Virginia, MPI Carolinas, MPI New Jersey, MPI Northern California

### **Facilitation Strengths**

- 30 years+ industry experience both as a planner and supplier in varied markets like New York, Miami, L.A., and Atlanta
- DISC-Certified Professional Coach
- Team & Member Engagement
- Conflict Management
- Change Management
- Inclusive Leadership
- Vision Planning and Execution
- Energizing a group to inspire focused, productive, and immediately actionable sessions
- **Languages Spoken:** English, Spanish

### **Biography**

Mitch Savoie Hill is a Cuban American CEO, TEDx speaker, published author, and Certified Professional Coach, with more than 30 years of hospitality and leadership experience. Some of the organizations she has worked with include the Miami HEAT, Viceroy Hotel Group, and the Society for Human Resource Management.

Mitch started in the hospitality industry as a singing waitress in New York City when she was 18 years old and later went on to manage teams for international companies, including a Five-Star hotel in Beverly Hills.

She has proudly served as a member, speaker, and volunteer leader for multiple Meeting Professionals International chapters, and was honored to be selected in 2026 as a bi-lingual MPI-Verified Facilitator!

As the CEO and founder of SavHill Consulting Group, she delivers leadership coaching, corporate training, and keynote speeches to help leaders and teams learn how to inspire collaboration, engagement, loyalty, and success!

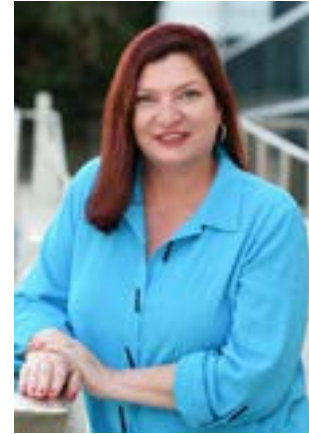
## Tara Liaschenko, CMM

St. Petersburg, FL

727.439.0994

tara@taraliaschenko.com

taraliaschenko.com



### MPI Leadership Experience

Tara has served the Tampa Bay Area Chapter Board in numerous roles including Chapter President.

Expanding her commitment to MPI, she has served on a global level for the following:

- International Membership Council
- Community Membership Advisory Council (Chair)
- Chapter Advisory Council (Chair)
- WEC Knowledge Council
- RISE Awards Judging Panel
- Diversity & Inclusion Taskforce
- RISE Up Taskforce (Chair)
- FACT Committee (Committee Member and Chair)
- Chair of the 50th Anniversary

### Facilitation Strengths

- Succession Planning – Volunteer Recruitment, Delegation and Management
- Leadership Development
- Membership
- Education
- Team Building
- Strategic Planning

### Biography

With over 25 years of planning experience, Tara Liaschenko is an award-winning professional who has earned an impeccable reputation for creativity and excellence in the event and meeting planning industry. She is the recipient of the 2015 MPI Global RISE Award for Member of the Year. Ms. Liaschenko is the Founder and Creative Executive Officer of The Link Event Professionals, Inc., a global company based in Tampa, Florida dedicated to planning services covering all aspects of meetings and events. An accomplished speaker, Ms. Liaschenko also facilitates board, staff, client retreats, for the last 14 years. Her company also expanded to facilitate strategic planning and leading business development planning for corporate and nonprofit clients as well as client advisory boards and focus groups. With strong community commitment, long-standing relationships with ethical and reliable vendors, and adept knowledge of production, Ms. Liaschenko is at the forefront of her industry consistently delivering her clients successful meetings and events. Her most recent accomplishments include being inducted into the MPI 50 Most Influential and International Community of Honorees.

**Anthony Molino, M.Ed.**  
**Galloway, New Jersey**  
**773-367-5124**  
**anthonym@visitatlanticcity.com**



## **MPI Leadership Experience**

### **MPI Chicago Area Chapter**

- 2012: Director of Education Programs
- 2013: Director of Education Conference
- 2014: Director of Industry Xchange & Strategic Alliances
- 2024: Board of Directors, Interim Vice President IDEA

### **MPI Potomac Chapter**

- 2015: Director of Mid-Atlantic Conference & Exposition (MACE)
- 2016: Director of Membership Recruitment
- 2017: Director of Community Outreach
- 2018: President Elect
- 2019: President
- 2020: Immediate Past President
- 2021: Interim Director of Certifications

### **MPI Global Volunteer**

- 2021-2023: Delegate, MPI Foundation US Council
- 2021-2023: Chair, MPI Global Equity, Diversity, and Inclusion Advisory Council
- 2023-2025: Vice Chair, Midwest Regional Council
- 2025 – Present: Chair, Northeast Regional Council US

## **Facilitation Strengths**

- Create high-energy, productive environments where people feel comfortable contributing, collaborating, and moving ideas into action.
- Design engaging teambuilding activities, workshop discussions, and breakout exercises that keep participants connected and focused.
- Draw on first-hand chapter leadership experience and diverse volunteer roles to understand group needs, facilitate effectively, and provide a high-level perspective on chapter operations.

## **Biography**

Anthony Molino serves as Vice President of Sales and Services for Visit Atlantic City, where he leads destination sales, destination services, marketing initiatives, and the Atlantic City Sports Commission. With more than 20 years of experience in hospitality, destination marketing, convention sales, and event management, he has held leadership positions with destination organizations, convention centers, and global hotel brands throughout his career.

A recognized industry leader, Anthony has served on the boards and committees of numerous organizations, including MPI, LGBT MPA, Destinations International, and PCMA. He is a speaker and facilitator known for his ability to connect people, foster collaboration, and create engaging learning environments.

Anthony holds a Master of Education degree and began his professional career as an educator, a foundation that continues to influence his facilitation style today. He combines practical industry experience with a passion for teaching, helping audiences move from ideas to action through meaningful dialogue and shared learning.

Anthony lives in Galloway, New Jersey, with his husband, also named Anthony, their one-year-old son, Joseph, and their rescue beagle, Phoebe.

## Cahal Mowery, CMP

Chicago, IL

847-714-2685

[cmowery@choosechicago.com](mailto:cmowery@choosechicago.com)



### MPI Leadership Experience

Cahal Mowery has been an active member of MPI since 2012 and was on the board of the Houston Area Chapter from 2013-2018, becoming the President of that Chapter. As a member of the MPI Rocky Mountain Chapter from 2018-2022, Cahal served as Chapter Liaison of the Student Club as well as serving on their Nominations Selection Committee. In 2022 Cahal became a MPI Verified Facilitator and in 2023, Cahal moved to Chicago and became a member of the Chicago Area Chapter.

### Facilitation Strengths

- Meetings Industry Business Acumen – as the Vice President of Sales at Choose Chicago, Cahal is highly involved in day-to-day business interactions within the meetings industry, communicates regularly with hundreds of hospitality partners throughout the country, and has frequent exchanges with clients. Throughout all these dealings, Cahal is very current with the business environment of the meetings industry and can leverage that knowledge when facilitating for a MPI Chapter.
- Millennial Leadership – as the President of the MPI Houston Area Chapter (and Director of Sales of a JW Marriott) at age 27, Cahal has first-hand experience with leading teams whose members often have far more industry experience than he does. Given that background, Cahal enjoys collaborating with and coaching other young leaders, including MPI Presidents, in similar situations as well as young teams on how to best embrace your “inner-Millennial” while leveraging all the knowledge and resources at the table to drive success.

### Biography

As Choose Chicago’s Vice President of Sales, Cahal Mowery blends his enthusiasm for the industry and his sales leadership experience to lead a sales team that positions an array of properties ranging from the largest convention center in North America, McCormick Place, to boutique luxury properties. Cahal’s career journey began with attending the Conrad N. Hilton College of Global Hospitality Management at the University of Houston to pursue his passion of hospitality. Upon a final semester abroad and graduation, Cahal joined Visit Houston as a National Account Executive on the Convention Sales Team. After fulfilling multiple sales markets over the course of 6 years with Visit Houston, Cahal joined the JW Marriott Houston Downtown as the Director of Sales & Catering before joining Visit Denver as the Director of Convention Sales. Through his experience, Cahal has earned his Certified Meeting Professional (CMP) designation, has served as President for the Meeting Professionals International-Houston Area Chapter (MPI-HAC), has been named a recipient of Connects 40 Under 40 2014 class as well as PCMA’s 20 in their Twenties 2018 class, and earned his MBA from the C.T. Bauer College of Business at the University of Houston. When not in the office, Cahal enjoys cooking, wine (he is a Certified Sommelier), staying active in the outdoors, and traveling.

**Rick Weaver**  
**Principal Strategist, TRANSFORM**

Eules, TX  
917-698-0722  
[rick@irickweaver.com](mailto:rick@irickweaver.com)  
[irickweaver.com](http://irickweaver.com)  
[calendly.com/rickweaver](https://calendly.com/rickweaver) (online meeting scheduler)



### **MPI Leadership Experience**

- 1994-1999 Served on/in various committees and board positions with MPI Northern CA (including Strategic Planning Ad Hoc Committee)
- 1999-2001 Served in various board positions with MPI Tennessee
- 2001-2002 Served on the board for MPI South Florida
- 2002-2003 Served on the board for MPI Greater New York
- 2003-2009 Served on the board for MPI WestField (including Chapter President 2008-2009)
- Served on various MPI International Committees including Chapter Structure Review, PEC Advisory Task Force, and the Chapter Facilitator Task Force.

### **Facilitation Strengths**

- Active Listener
- Can Easily Synthesize Discussions
- Authentic
- Impartial
- Enthusiastic
- Patient
- Deliverables-Oriented

### **Biography**

Energetic and innovative speaker, association consultant, business coach, facilitator and author; Rick Weaver, inspires and teaches powerful and practical solutions for achieving the maximum EXPERIENCE in presentation skills, strategic planning and leadership/volunteer development. Rick has accumulated 30+ years in the hospitality industry and has facilitated over 350 successful client meetings and events since 1999. Rick's background as a professional facilitator, as well as his extensive experience in volunteer management of 501c3 not for profit associations, brings a practical breadth of knowledge to the table that continues to meet and exceed his client's needs.