



When we **meet**, we change the world. SM

TOWN HALL AGENDA



PLEASE HOLD UNTIL PRESENTATION COMMENCES.

To accommodate a more effective call, please keep your line on MUTE.
Type your questions into the chat. This call will be recorded and uploaded to the CLRP.

- MPI Global Financial Update
- Short-Term Chapter Support
- Longer-Term Chapter Support
- Q&A



Need help with your membership?

Contact help@mpi.org or call **972-702-3053**

WE'LL GET THROUGH THIS TOGETHER



Paul Van Deventer
President & CEO

**Start where you are.
Use what you have.
Do what you can.**

Arthur Ashe





OMPI GLOBAL
FINANCIAL UPDATE

PRIORITIES



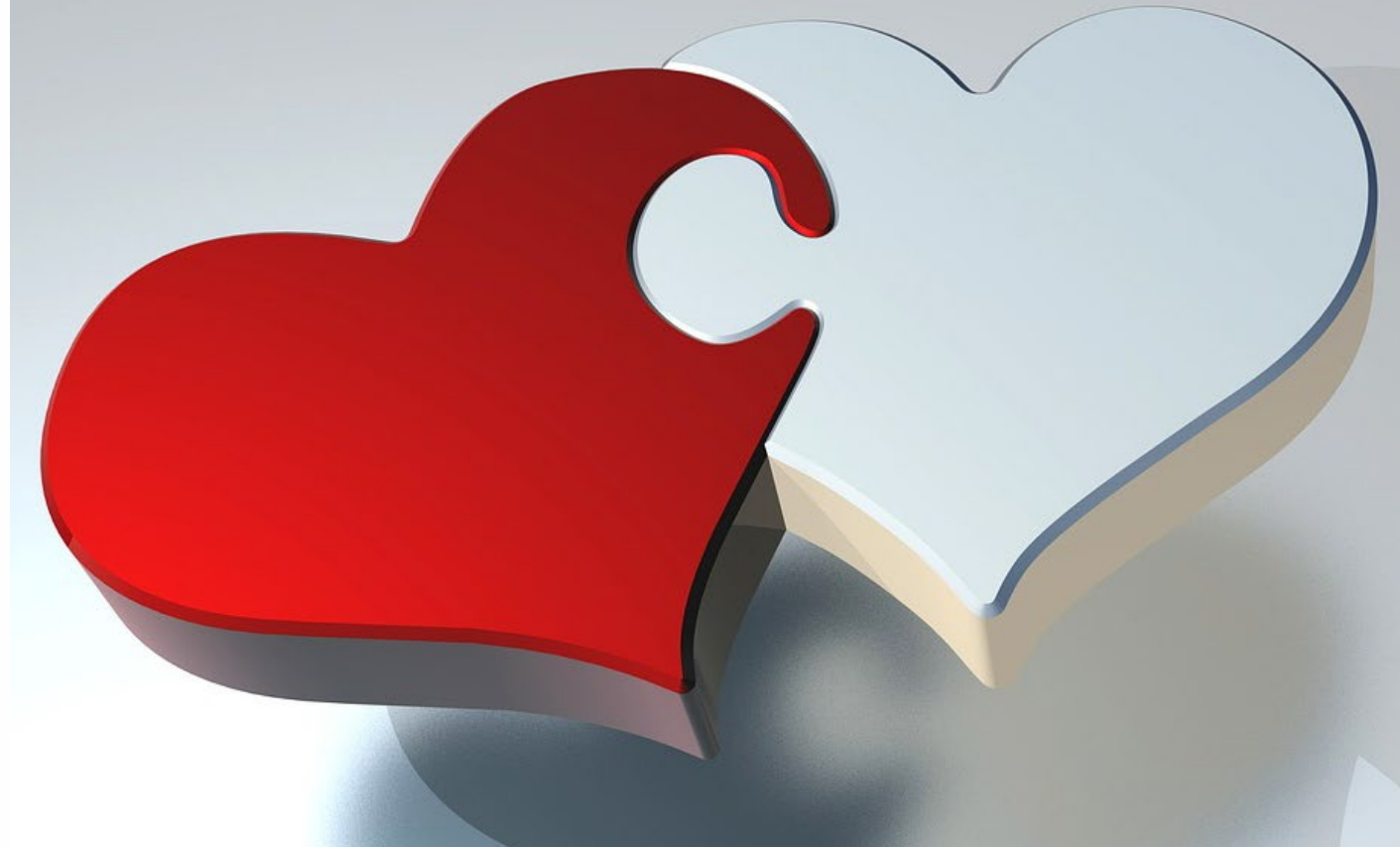
1. Staff

- ✓ Business Continuity

2. Community

- ✓ Chapter Leaders & Members
- ✓ Partners
- ✓ Industry

3. Liquidity



**Long-term sustainability of MPI
is the foundation of all decision-making**



SHORT-TERM
CHAPTER SUPPORT

SHORT-TERM SUPPORT



Kristi Casey Sanders,
CMM, CMP
Sr. Dir., Community Engagement



- Financial support for members struggling to renew
- Administrative relief for chapter leaders (standards, compliance docs, focus on basics at annuals)
- Chapter leader training/calls & essential education/resources
- Financial support for chapters in distress

Your primary focus this year is to keep your chapter in business.
Our #1 priority is to make sure you do.

FINANCIAL AID FOR RENEWALS



The MPI Foundation provided a grant to aid members towards renewal if they want to remain engaged.

If you, a member of your board, or any of your members are up for renewal and in need of financial assistance, contact us at help@mpi.org or +1-972-702-3053.

Collectively, we can offer alternatives towards member relief!



**Note: The original email we gave you
(feedback@mpi.org) still works.*

Business continuity focus:

- What expenses can you cut?
- What contracts can you renegotiate?
- What payments can you defer?

Does your incoming board need to work with your current board a little longer?

Work with your facilitators and your board to create your short/long-term business plans.

If you don't have a facilitator for your annual retreat, please let your COM know.



MPI PAYMENTS & CHAPTER REBATES



One way we can offer relief is to defer your payments to MPI Global for shared services for your website and new financial platform for the next 120 days.

However, chapter rebate payments will be deferred for the same 120-day period. We are working on a chapter financial health assessment

Our COM team will be contacting distressed chapters with low/no reserves and low/no cash to work through short-term plans. We're also working on more comprehensive plans for short and long-term chapter relief options with an internal/external task force.



GOVERNMENT GRANTS FOR NONPROFITS (US ONLY)

- US Chapters are 501(c)(3) nonprofits which can apply for two different kinds of loans through the CARES Act.
- EIDL may be the best choice, as PPP loan amounts are calculated based on your monthly payroll expenses. Check your eligibility on the USTA page:
<https://www.ustravel.org/toolkit/covid-19-cares-act-relief-resources>
- Links to video tutorials on how to apply for each, how to get free local counseling, and more are in the MPI Chapter Support Resource Guide that will go out in the April Chapter Leaders Newsletter tomorrow.



National Aid:

- So far, the international chapters don't have a relief option like the US CARES Act
- Continue to monitor government assistance.
- Financial aid availability varies; members and small business owners may have relief, depending on the country.

Ongoing Resource Review:

- Links to government sites relevant to our international chapters will also be in the MPI Chapter Support Resource Guide going out with April's newsletter tomorrow.
- Updates forthcoming.



Nothing has materially changed regarding MPIF support:

- Chapter educational grants (branded or non-branded) are available.
 - (i.e. American Airlines, Freeman Canada)
- Chapters in distress may also apply for a grant.
 - (i.e. MPI Belgium 2016)
- Scholarships are available for professional development.
- Providing substantial financial assistance operational support for Global short-term.





LONG-TERM
CHAPTER SUPPORT

We're investigating other options that can provide better long-term stability and chapter support.

Options under review:

- Chapter to chapter micro-loans
- Financial mentorship program
- Other support for distressed chapters

We will update you on our plans before the end of April.



QUESTIONS?





When we **meet**, we change the world. SM

This has been recorded. A copy of this presentation will be uploaded to the CLRP and the MyMPI community for Chapter Leaders within the next few days.