

EXPERIENCE

A FOUR SEASON DESTINATION

Located on Northwest Florida's beautiful Gulf Coast. Sandestin is a convenient drive-or-fly destination, served by three airports. Comfort and beauty of an exotic location without the need for passports.





AT SANDESTIN, THE CLIENT IS ALWAYS FIRST

You can count on our professional sales team to create a meeting experience that is engaging and inspiring to your attendees. We realize the return on Engagement is just as important as Return on Investment! Our unique resort was built to inspire collaboration, enhance productivity and generate results!

SANDESTIN HAS EARNED A REPUTATION FOR CONSISTENTLY DELIVERING A SUPERIOR MEETING EXPERIENCE FOR GROUPS.

Gold Key Award from Meetings & Conventions
Pinnacle Award, Successful Meetings
Best of the South Award from Meetings South
Reader's Choice recipient by ConventionSouth
Gold Tee Award from Meetings & Conventions
Greens of Distinction and Award of Excellence,
Corporate Incentive Travel
Planner's Choice Award, Meeting News

GETTING HERE FROM THERE

Sandestin Golf and Beach Resort is a hidden treasure, but it is actually very easy to find. By car, Sandestin is within a comfortable 5 hour drive from most major cities located in the Southeast. To venture to this Gulf Coast destination by air, there are four convenient airports which service the Destin, Florida area:

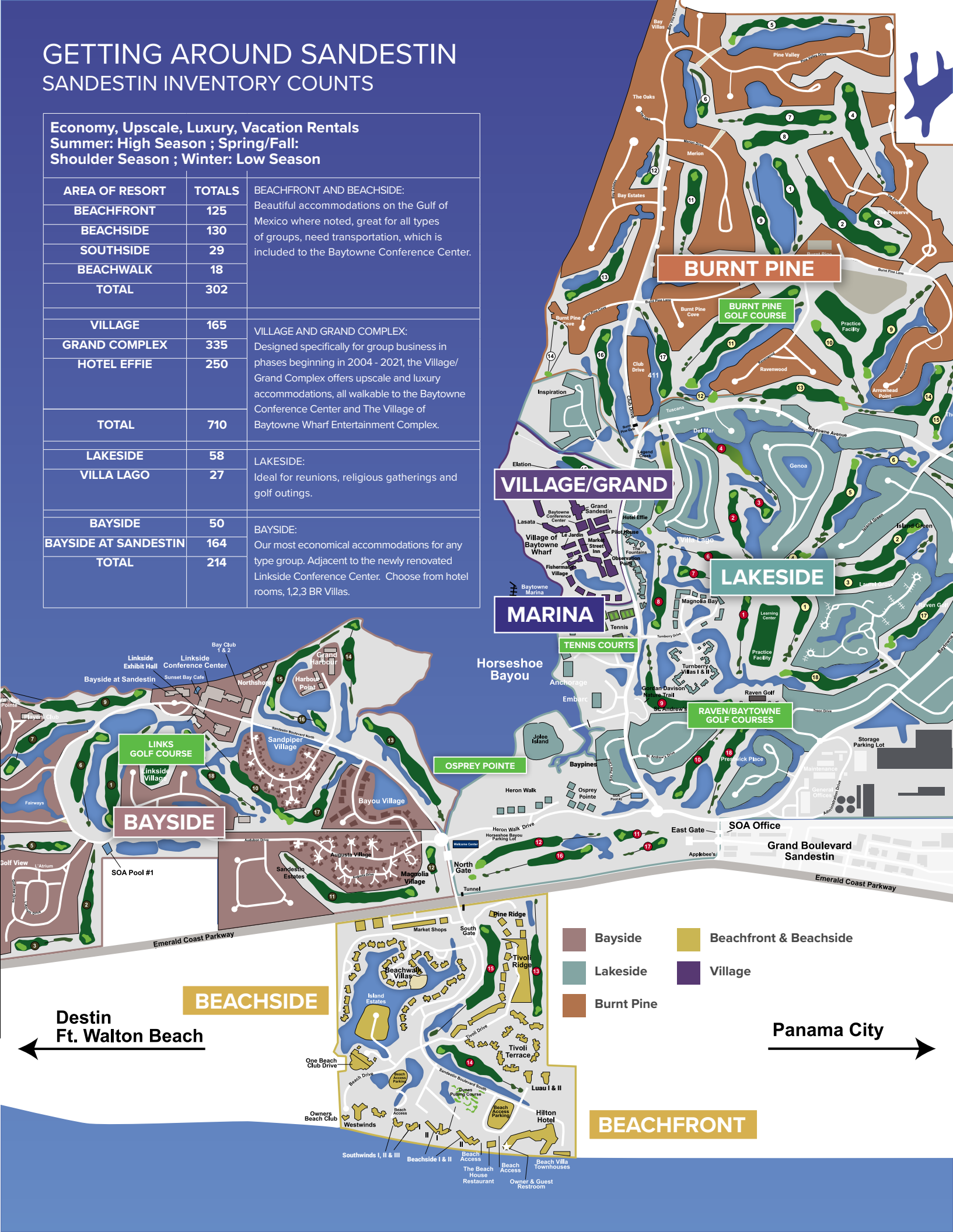
- Destin/Ft. Walton Beach Airport (VPS) 24 miles
- Northwest Florida Beaches International Airport (ECP) 40 miles, Panama City
- Pensacola Regional Airport (PNS) 65 miles
- Destin Airport (DSI) 8 miles. (Accessible only to private jets and planes.)



Mileage from Major Cities to Sandestin Golf and Beach Resort			
Atlanta	330	Jacksonville	283
Baton Rouge	318	Louisville	617
Birmingham	253	Memphis	619
Boston	1445	Miami	729
Chicago	914	Minneapolis	1314
Cincinnati	720	Montreal	1578
Cleveland	976	Nashville	445
Columbus	831	New Orleans	269
Dallas	770	New York	1218
Detroit	973	Orlando	379
Houston	595	St. Louis	748
Indianapolis	731	Toronto	1191

GETTING AROUND SANDESTIN SANDESTIN INVENTORY COUNTS

Economy, Upscale, Luxury, Vacation Rentals Summer: High Season ; Spring/Fall: Shoulder Season ; Winter: Low Season		
AREA OF RESORT	TOTALS	BEACHFRONT AND BEACHSIDE: Beautiful accommodations on the Gulf of Mexico where noted, great for all types of groups, need transportation, which is included to the Baytowne Conference Center.
BEACHFRONT	125	
BEACHSIDE	130	
SOUTHSIDE	29	
BEACHWALK	18	
TOTAL	302	VILLAGE AND GRAND COMPLEX: Designed specifically for group business in phases beginning in 2004 - 2021, the Village/Grand Complex offers upscale and luxury accommodations, all walkable to the Baytowne Conference Center and The Village of Baytowne Wharf Entertainment Complex.
VILLAGE	165	
GRAND COMPLEX	335	
HOTEL EFFIE	250	
TOTAL	710	LAKESIDE: Ideal for reunions, religious gatherings and golf outings.
LAKESIDE	58	
VILLA LAGO	27	BAYSIDE: Our most economical accommodations for any type group. Adjacent to the newly renovated Linkside Conference Center. Choose from hotel rooms, 1,2,3 BR Villas.
BAYSIDE	50	
BAYSIDE AT SANDESTIN	164	
TOTAL	214	





SANDESTIN OFFERS AN ENVIRONMENT FOR LIVELY DISCUSSION AND THE EXCHANGE OF INTERESTING IDEAS.

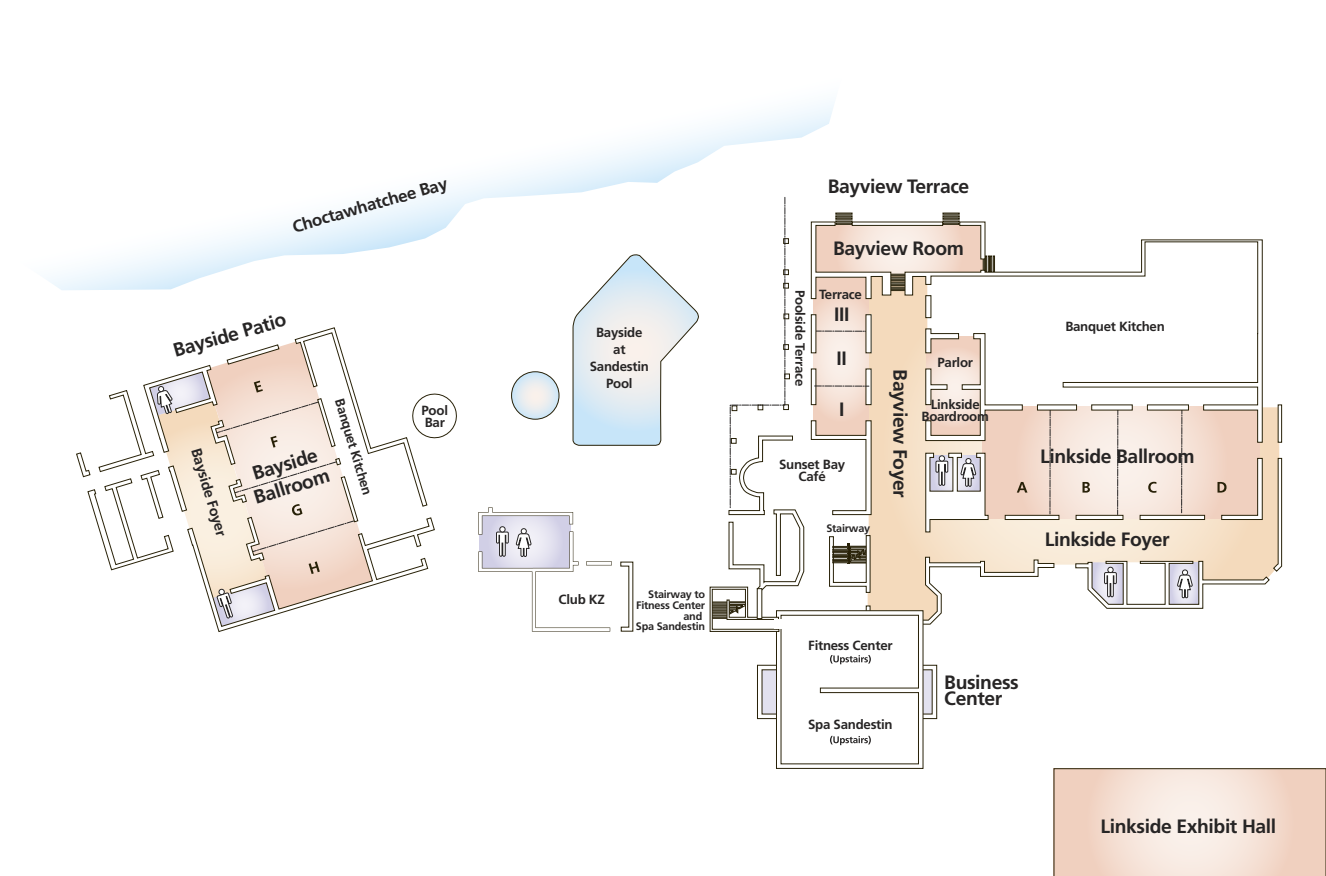
Meetings are not limited to four walls and a ceiling. At Sandestin, you'll find more than 85,000* square feet of smart, sophisticated and charming meeting space backed by our dedicated conference services professionals plus a choice of memorable outdoor venues to enhance your meeting experience.

MEETING QUICK FACTS

Sandestin's 85,000* sq ft of flexible meeting space includes:

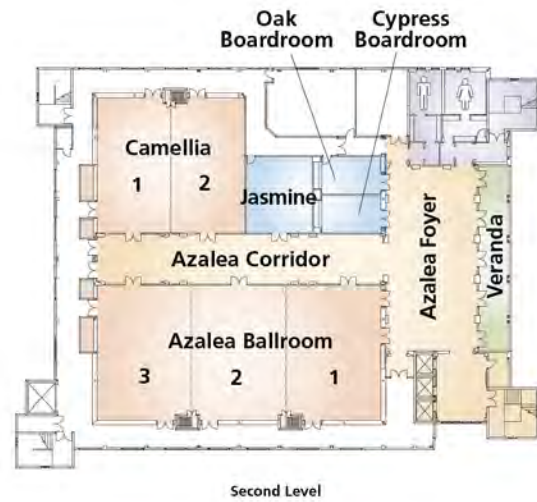
- 32,000 sq ft Baytowne Conference Center (newly renovated in 2020) including the 13,500 sq ft Magnolia Ballroom, the largest ballroom on the Northwest Florida Coast
- 20,000 sq ft of dedicated meeting space with another 13,000 sq ft ballroom at Hotel Effie (opened in 2021) and contiguous to existing 32,000 sq ft Baytowne Conference Center
- 33,000 sq ft Linkside Conference Center (renovated in 2018), including the 12,600 sq ft Linkside Exhibit Hall
- 24 breakout rooms
- Four boardrooms
- Five ballrooms
- Two business centers
- Serving groups from 10-1,600
- 30-member culinary crew
- On-site sales and conference services
- Meeting packages
- Team building
- Themed events
- On-site audiovisual
- Spouse and children's programs





The Linkside Conference Center

Room	Dimensions	Square Feet	Ceiling Height	Theatre Style	Classroom	Rounds of 10	Reception	Hollow Square	U-Shaped	6' x 8' Exhibits
Linkside Ballroom										
Ballroom	120' x 48'	5,760	14'	745	369	470	625	-	-	50
A	28' x 48'	1,344	14'	135	84	110	150	42	36	10
B	28' x 48'	1,344	14'	135	84	110	150	42	36	10
C	28' x 48'	1,344	14'	135	84	110	150	42	36	10
D	35' x 48'	1,680	14'	175	105	120	180	48	39	15
Linkside Foyer	150' x 20'	3,000	-	-	-	-	350	-	-	14
Bayview Conference Rooms										
Terrace I, II & III	70' x 23'	1,610	12'	150	110	110	165	72	66	13
Terrace I	22' x 23'	506	12'	40	27	30	55	24	18	-
Terrace II	24' x 23'	552	12'	40	27	30	60	24	18	-
Terrace III	24' x 23'	552	12'	40	27	30	60	24	18	-
Bayview Foyer	25' x 60'	1,500	-	-	-	-	160	-	-	10
Bayview Room	73' x 23'	1,679	11'	185	105	130	180	66	60	16
Bayview Terrace	-	1,248	-	-	-	-	150	-	-	-
Parlor	23' x 22'	506	11'	-	-	-	20	-	-	-
Boardroom	23' x 22'	506	11'	-	Conference: 12	-	20	-	-	-
Poolside Terrace	-	-	-	-	-	370	700	-	-	-
Bayside Ballroom										
Ballroom	100' x 40'	4,000	16'	475	250	330	420	-	-	30
E	25' x 40'	1,000	16'	110	55	60	100	42	36	-
F	25' x 40'	1,000	16'	110	55	60	100	42	36	-
G	25' x 40'	1,000	16'	110	55	60	100	42	36	-
H	25' x 40'	1,000	16'	110	55	60	100	42	36	-
Foyer	74' x 16'	1,184	10'	-	-	-	150	-	-	-
Patio	14' x 75'	1,050	-	-	-	80	125	-	-	-
Linkside Exhibit Hall										
Exhibit Hall	140' x 90'	12,600	20'	1,200	-	750	1,200	-	-	95

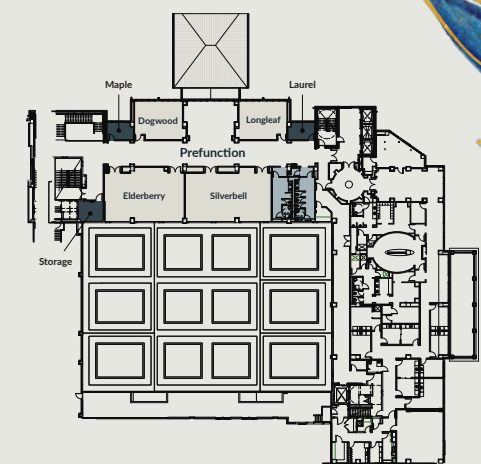
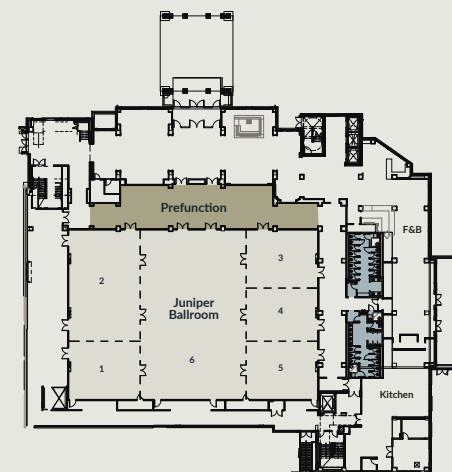


The Baytowne Conference Center

Room	Dimensions	Square Feet	Ceiling Height	Theatre Style	Classroom	Banquet	Reception	Hollow Square	U-Shaped	8' x 10' Exhibits
Magnolia										
Ballroom	109' x 124'	13,500	20'	1,500	900	1,200	1,600	—	—	92
ABC	109' x 51'	5,550	20'	600	324	360	—	—	—	38
DEF	109' x 51'	5,550	20'	600	324	360	—	—	—	38
ABC & Corridor	109' x 73'	7,950	20'	900	486	540	1,000	—	—	48
DEF & Corridor	109' x 73'	7,950	20'	900	486	540	1,000	—	—	48
A	36' x 51'	1,850	20'	180	105	120	265	66	51	12
B	36' x 51'	1,850	20'	180	105	120	265	66	51	12
C	36' x 51'	1,850	20'	180	105	120	265	66	51	12
D	36' x 51'	1,850	20'	180	105	120	265	66	51	12
E	36' x 51'	1,850	20'	180	105	120	265	66	51	12
F	36' x 51'	1,850	20'	180	105	120	265	66	51	12
Corridor	109' x 22'	2,400	20'	—	—	—	—	—	—	13
Magnolia Foyer	54' x 71'	3,800	19'	—	—	—	550	—	—	10
Magnolia Breezeway	—	—	—	—	—	144	250	—	—	—
Azalea										
Ballroom	109' x 51'	5,500	15'	600	324	360	800	—	—	38
1	36' x 51'	1,850	15'	180	105	120	265	66	51	12
2	36' x 51'	1,850	15'	180	105	120	265	66	51	12
3	36' x 51'	1,850	15'	180	105	120	265	66	51	12
Azalea Foyer	36' x 70'	2,500	15'	—	—	—	370	—	—	11
Azalea Corridor	109' x 18'	—	15'	—	—	—	—	—	—	13
Camellia										
1 & 2	57' x 51'	2,900	15'	275	144	200	400	90	—	17
1	28' x 51'	1,450	15'	150	84	100	200	48	42	8
2	28' x 51'	1,450	15'	150	84	100	200	48	42	8
Jasmine										
Jasmine	26' x 29'	750	14'	60	27	40	100	30	24	6
Oak Boardroom										
Boardroom	25' x 14'	350	11'	Conference: 12	—	—	—	—	—	—
Cypress Boardroom										
Boardroom	25' x 14'	350	11'	Conference: 12	—	—	—	—	—	—
Grand Lawn										
Lawn	—	10,000	—	—	—	400	1,000	—	—	—

Hotel Effie Sandestin

Room	Dimensions	Square Feet	Ceiling Height	Theatre Style	Classroom	Banquet	Reception	Hollow Square	U-Shaped	8' x 10' Exhibits
Main Level										
Juniper Ballroom	139' x 94'	13,066	20'	1,500	900	900	900	—	—	92
3456	98' x 94'	9,212	20'	1,005	576	600	1,250	126	108	68
126	98' x 94'	9,212	20'	1,005	576	600	1,250	126	108	68
1	39.5' x 32'	1,264	20'	135	84	90	150	42	36	10
2	39.5' x 62'	2,418	20'	270	168	180	300	84	72	20
3	39.5' x 32'	1,264	20'	135	84	90	150	42	36	10
4	39.5' x 32'	1,264	20'	135	84	90	150	42	36	10
5	39.5' x 32'	1,264	20'	135	84	90	150	42	36	10
6	59' x 94'	5,546	20'	600	324	360	800	—	—	38
Prefunction	116' x 14'	1,624	20'	—	—	—	—	—	—	—
Second Level										
Silverbell	27' x 48'	1,296	15'	135	72	90	150	42	36	10
Elderberry	27' x 44'	1,188	15'	135	72	90	150	42	36	10
Dogwood	21.5' x 26.5'	556	15'	40	24	30	60	24	18	—
Longleaf	21.5' x 26.5'	556	15'	40	24	30	60	24	18	—
Laurel	9.5' x 14.5'	137	15'	—	—	—	—	—	—	—
Maple	9.5' x 14.5'	137	15'	—	—	—	—	—	—	—
Prefunction	116' x 14'	1,624	15'	—	—	—	—	—	—	—
(T-Shape Widest 37')										





A PLACE TO STAY FROM BEACH TO BAY

A sampling of the unique offerings in four distinct areas of the resort and easily accessible by our complimentary tram service. Each features its own unique architectural style and amazing views of the beach, bay, golf courses and Village. We offer hotel rooms and suites, one-, two-, three- and four-bedroom accommodations including villas and town homes - 1,350 rooms in all. No matter which style of accommodations you choose, economy, upscale, luxury or vacation rentals, you'll always be in close proximity to your events and activities.

VILLAGE/GRAND



BAYSIDE



BEACHSIDE



LAKESIDE





Sandestin's newest residential development, Osprey Pointe is a 77-unit condominium project on Heron Walk Drive offer luxurious 2, 3 and 4 bedroom properties. This beautiful development features a serene nature preserve, bay views, a stunning pool and clubhouse. The resort condominium community opened in 2020. Osprey creates a resort within a resort - 77 executive style retreats offering amenities and space for creative group events.



The Sandestin Hotel is the first new development within Sandestin Golf and Beach Resort in over 4 years. The four-star, new full-service hotel includes a three-meal restaurant, a lobby bar, room service, a luxury spa, a fitness facility, a signature rooftop pool and bar. The Hotel Effie includes 20,000+ square feet of meeting space and features a 13,000-square foot ballroom. This meeting space, contiguous to the 32,000+ square feet of existing meeting space at Baytowne Conference Center, will allow Sandestin to book much larger groups, upwards of 800 participants or multiple group configurations simultaneously.





EXCEPTIONAL CULINARY

Sandestin Golf and Beach Resort's 30-member culinary team specializes in catered events. Tell us your ultimate menu, or let us show you some of our original specialties. Impress your guests with our creative menus.

- 30-member Culinary Crew
- Creative Menus
- Superb Selection of Options
- Competitive Pricing



TEAM BUILDING AT SANDESTIN

At Sandestin, your attendees will experience camaraderie and bonding by taking part in team-building activities and returning home with a refreshed sense of connection.

Some of our most popular are:

Baytowne Adventure Zone with Zip line and Ropes Course

Beach Olympics

Cardboard Boat Regatta

Amazing Race

Scavenger Hunt

Minute to Win it

CORPORATE SOCIAL RESPONSIBILITY

People and the planet are a key focus as groups embrace Corporate Social Responsibility (CSR) within their meeting and conference agendas. Whether it is saving a child or saving a seashore, Sandestin is committed to helping you find just the right CSR objective for your next meeting, conference or incentive.





AMENITIES & ACTIVITIES TO FIT ANY INTEREST

Four Championship Golf Courses

15 World-class Tennis Courts

Biking, Walking, Nature Areas

Fitness Centers and Full Service Day Spa

Stunning Beach

Full Service Beach Activities - Paddle Boards, Kayaks, Waverunners,
Parasail Rides, Bicycles, Miniature Golf, Boogie Boards, Beach Set-Up

Full Service Marina

Supervised Children's Programs - Club KZ

ENJOY SANDESTIN'S OWN VILLAGE OF BAYTOWNE WHARF

This 28-acre waterfront pedestrian village is an excellent location for event attendees to engage

Shop • Dine • Play • Be Entertained

More than 20 dining options to fit all budgets

Entertainment and activities for all ages - Zipline, Ropes Course, Trampoline, Rock Wall, Arcade, Playground, Merry-go-round, Ice Skating (seasonal)

Lively bars, pubs and nightclubs

Collection of charming boutique shops

Signature events featuring culinary, wine, music and art festivals - Sandestin Wine Festival, Baytowne Beer Festival, Sandestin Gumbo Festival, Tuesday Fireworks and Wednesday Night Concerts (seasonal)





LIVING AND WORKING GREEN

Sandestin is dedicated to finding solutions for the sustain ability of the planet through:

- Water Conservation
- Recycling / Re-use
- Energy Conservation
- Nature Preservation
- Incorporate eco-friendly disposable products
- “Conserving and Thirsty” reward initiative for guests

Innovation and Recognitions:

Baytowne Marina received Clean Marina status



Contact us today to see how we can be of service to you:
800.277.0803 or email us at Meetings@Sandestin.com
Sandestin.com/meetings