

[< Click Here](#) to Go Back to eNews Listing



MEMBERSHIP | EDUCATION / EVENTS | LEADERSHIP | MARKETPLACE | CAREER RESOURCES

MARCH / APRIL 2014

MPI D/FW educates and prepares its members for their changing roles in the greater business world. The association validates relevant knowledge and skills while simultaneously demonstrating a commitment to meeting excellence. Record five-time winner of "Chapter of the Year"



Sponsorships and Advertising space for your business here. Call us for pricing.

CALENDAR

APRIL EVENTS

April Chapter Event

WHAT'S NEW

HEARD IT THROUGH THE GRAPEVINE

EDUCATION

TEST YOUR CMP KNOWLEDGE



Date: April 24, 2014

Time: 11:00 am - 1:30 pm

Location: 6th Floor Museum

Speaker: Eli Gorin, CMP/CMM

SPONSOR:



APRIL EVENTS

APRIL CHAPTER EVENT
Spring Leadership Breakfast Club



Date: April 30, 2014

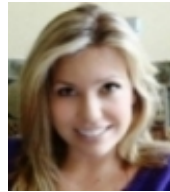
Time: 7:00 am - 8:30 am

Location: The Wine Poste, Dallas

Speaker: Chef Kent Rathbun

Heard It Through
The Grapevine
Sponsored By
GRAPEVINE TEXAS
AGED TO PERFECTION

Members on the Move



Jennifer Parker, CWC, recently joined Zoes Kitchen as National Sales Manager



Congratulations to **Lianne Pereira, CMP/CMM**, of Juniper Originals. Her fiancée, Lee Thompson, proposed on Valentine's Day. The couple is planning on a cruise getaway elopement followed by a country style BBQ weekend reception for firends and family.



Dvorah Evans, CMP/CMM recently joined HD Vest Financial Services.



Amanda Wells, CMP/CTA is now Director, New Business Development at VWV USA

Sean Ewell is now Business Development Director at The Freeman Company



When renting or chartering buses for your group's transportation, you should use only recognized and licensed professional suppliers who are responsible for acquiring all necessary permits and providing insurance with your organization named as:

- (A) Optionally insured
- (B) Additional insured
- (C) Partial insured
- (D) Totally insured

Answer is Below

FEBRUARY PROGRAM HIGHLIGHTS

The February Chapter Meeting was held at the Courtyard by Marriott in Grapevine. Committee chairperson Alisa Caldwell, CMP of Ambit Energy and Vice Chair, Lynn Armstrong of Experient and their committee planned an exciting program featuring well-known author, Gary Guller.

When asked why the committee selected Gary as their featured speaker, VP of Education, Paula Bruton shared, "He is the first one armed mountaineer to take the largest cross disability group to the base camp at Mt. Everest. He is also the first one arm mountaineer to ever summit Mt. Everest. His book is Making Others Great is fabulous and he would be fantastic for the group. He is easy to work with and has such a moving story to tell.

He lost his arm in a climbing accident and he begged the doctors to go ahead and amputate even though they didn't want to. Gary is young and very vivacious. Our members will love him!"

The Networking Reception was followed by a



more information



Date: April 10, 2014

Time: 5:30pm - 7:30pm

Prestonwood Country Club,
Dallas

Location:

Speaker: TBA

more information

INDUSTRY EVENT

Richland TEMM Annual Fundraising Luncheon



Date: April 9, 2014

Time: 11:00am - 1:00pm

Location: Royal Oaks Country Club

Speaker: TBA

more information

GLOBAL EVENTS



WELCOME NEW MEMBERS

FEBRUARY 2014

Melissa Benach - JW Marriott Guanacaste Resort & Spa

JacquelineBosworth -The St Anthony Hotel

Alexa Cantu - Autotrader.com

Kerry Kennedy - CheapCaribbean.Com

Christy Lemons - Rough Creek Lodge and Resort

Stacey Lesanto - Lone Star Park at Grand Prairie

Toni Lira -Vail Cascade Resort & Spa

Alyssa Moreno - Society of Petroleum Engineers

Marina O'Connor - Richland College, DCCCD

Courtney Percival - Eddie V's

Dana Pickle - Anaheim Convention Bureau

TayriRoe - Eventlink Internatinal, Inc.

Crystal Walker - Idea Fountain, Inc.

Silvia Zamora CMP/CMM -Virtuoso, Ltd.

MEMBER DIRECTORY NEWS

Member Directory News - Tired of having to remember two logins and passwords for our website access? Good news! We have updated our website so you link directly to the MPI International Website directory.

SPIRIT AWARD

Spirit Award, February 2014

Congratulations to: Michelle Meehan of the

luncheon prepared of Grilled Chicken Breast with Rosemary Citrus Cream, Wild Mushroom Risotto, Chef's Choice of Seasonal Vegetables and desserts of New York Cheesecake with Raspberry Coulis and Texas Style Chocolate Bourdon Pecan Pie.

Teresa Norton from Earth Day Texas discussed upcoming volunteer opportunities for members on Earth Day in April (see more details in this newsletter under volunteers) as part of the chapter's ongoing Corporate Social Responsibility efforts chaired by Marti Fox, CMP, CMM of Global Goals.

Floral centerpieces were sponsored by Rae's Exclusive Design.

Photography by Jim Woods



Past Presidents, Greg Elam and Steven Foster, CMP



Featured Speaker, **Gary Guller**, author of Make Others Greater: From Mt.Everest to the Board Room



Date: August 2-5, 2014
Time:
Location: Minneapolis, MN
Speaker: Various

[more information](#)

WEC HOSTED BUYER PROGRAM



Date: August 2-5, 2014
Time:
Location: Minneapolis, MN
Speaker: N/A

[more information](#)



membership Committee for her tireless work in Membership Recruitment.

CORPORATE SOCIAL RESPONSIBILITY (CSR)

Teddy Bear Drive -- Final Results!

The Teddy Bear Drive surpassed our goals! Over 1,000 Teddy Bears were donated by MPI D/FW Chapter members. They have been distributed to local police and firestations to help children in times of crisis.

The drive began at Camp Wisdom in August 2013 and culminated at the January program where chapter members and the Dallas Police Department honored the Policeman of the Month. Shown: CSR Chair, Marti Fox, CMP, CMM.



To see the complete photo gallery from the program, [click here](#) PHOTO ALBUM

CMP Quiz Answer:

B, Additional Insured, see C.I.C. page 64

Sponsorships and Advertising space for your business here. Call us for pricing.

Sponsorships and Advertising space for your business here. Call us for pricing.

Sponsorships and Advertising space for your business here. Call us for pricing.

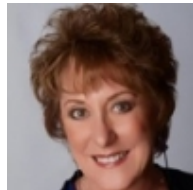
BUY MPI D/FW

GET CONNECTED

PRESIDENT'S CORNER

SPONSOR SPOTLIGHT

March Chapter Meeting Sponsor



Thank You Sandi Galloway. Contact Sandi About Canada TODAY!

more information

BE A SPONSOR

An exciting new opportunity is now available. The E-Newsletter Sponsorship and advertising banners will offer members a way to expand your brand to over 700 members.

more information

Thank you to our partner **Jim Woods Photography**

NETWORKING EVENTS

A Texas Sized Thank You

Thank you Sally Cameron for hosting us at Courtyard by Marriott in Allen, TX. Over 30 MPI members celebrated St Patrick's Day while enjoying fun networking activities and wonderful food and new friends.



VOLUNTEER OPPORTUNITIES

EARTH DAY TEXAS, CSR Project
APRIL 26-27, 2014



more information

PRESIDENTS MESSAGE

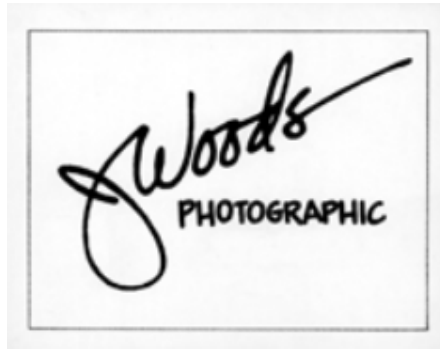


Spring has always been my favorite time of year. Not only does it allow for more time spent outdoors with family and friends after being cooped up all Winter, but it also prompts hopeful thoughts about rejuvenation, renewal and regrowth.

With that, I pose the question, what do you have planned for the month of April that will allow you to experience some personal rejuvenation, renewal and regrowth? I suggest taking part in an international movement known as "Pay It Forward Day" - taking place on Thursday, April 24, 2014.

Inspired by the wonderful movie "Pay it Forward", starring Kevin Spacey, Helen Hunt and Haley Joel Osment — Pay it Forward Day began in Australia in 2007 and over three million people have participated each year since. The concept is simple — help others without expecting something in return. Rather, ask them to pass the kindness on to someone else and "Pay It Forward."

Your thoughtful deeds don't have to be huge or showy. They can be as simple as buying someone's cup of coffee at a drive thru, leaving a flower on someone's desk or windshield, returning someone's shopping cart at the grocery store ... the options are endless. Once your task is complete, to keep the



CLICK IMAGE TO VISIT HIS WEBSITE

ABOUT MPI D/FW

MPI D/FW Chapter 2013-2014 Board of Directors

- Alison Kieckhafer, CMP - President
- Amanda Wells, CMP/CTA - President Elect
- Lauren Dunnaway, CTA - Immediate Past President
- Jennifer Parker, CWC - VP Finance & Sponsorship
- Dana Rhoden, CMP/CMM - VP Communications
- Paula Bruton, CMP - VP Education & Events
- Sherry DeLaGarza, CMP/CMM - VP Leadership
- Pam Madewell - VP Membership
- Tammy Williams - Director Finance & Sponsorship
- Sean Ewell - Director Communications
- Nicole Stokes - Director Education
- Charlotte Gannon - Director Special Events
- Gail Grogan, CMP/CMM - Director Leadership
- Erin Lucia - Director Membership

Newsletter Editor: Dana Rhoden, CMP, CMM

CAREER CENTER

Great News! The Career and Resources page on the MPIDW.Org website has changed. You can now directly access the MPI International Job Board from here.. Looking for a job, looking for new team members? Go to our Career Center.



Engage with our members in social media.

Join us in LindedIn and and “like us” on Facebook



MPI D/FW Chapter Social Media Policies
 Abide by the MPI Code of Ethics
 Clarify your opinions are your own
 No selling or promotions of products or services
 No gossip
 No profanity
 Use good judgment and understand postings are permanent
 Be respectful and polite

movement going, hand the recipient of your kindness a card explaining the Pay It Forward movement and encourage them to do the same.

Mark your calendars and be sure to take part in “Pay It Forward Day” on Thursday, April 24th. After all, as it was once said by the ancient Greek storyteller Aesop, “No act of kindness, no matter how small, is ever wasted!”

.....
BOARD NOTES

- 2014-2015 Board of Directors Slate Announced
- President- Amanda Wells, CMP
- President-Elect- Tony Cummins, CMP/CMM
- Immediate Past President- Alison Kieckhafer, CMP
- VP Finance- Melissa Logar, CMP
- VP Communications- Sean Ewell
- VP Leadership- Sherry Delagarza, CMP/CMM
- VP Membership- Erin Lucia
- VP Education & Events- LaDenna Franks, CMP
- Director Finance- Tammy Williams
- Director Communications- Patrick Dolan
- Director Leadership- Gail Grogan, CMP/CMM
- Director Membership- Paige Mejia
- Director Education- Liana Graham, CMP
- Director Special Events- Alisa Caldwell, CMP

.....
MEMBERSHIP NEWS

Did You Know?



Chapter Awards are coming! Watch for more information about our annual awards.

Start thinking about the that special member who has gone over and above and is deserving of recognition. Planner and Supplier of the Year are just a few of the prestigious awards given by the chapter. See last year’s award winners.

