

## 2015 MPI DFW E-Newsletter - June

Current - June 2015

DALLAS/FORT WORTH  
CHAPTER  
MPI  
MEETING PROFESSIONALS INTERNATIONAL

AN OFFICIAL PUBLICATION OF THE MPI DALLAS/FORT WORTH CHAPTER

current  
MAGAZINE

# MPI DFW Current - June 2015

*Coming together is a beginning; keeping together is progress; working together is a success.*  
- Henry Ford

MPI D/FW educates and prepares its members for their changing roles in the greater business world. The association validates relevant knowledge and skills while simultaneously demonstrating a commitment to meeting excellence. Record five-time winner of "Chapter of the Year"

## A Message from the President...



This has been an exciting year. It's been a year of change for our chapter in more ways than I and probably the entire board of directors imagined. We've laughed, we've cried, we've conquered some challenges and the chapter is stronger because of it.

The board's goal was to elevate the entire MPI experience from membership onboarding, to engaging educational experiences, out of the box networking events and an overwhelming return on your investment and involvement. I know it was a lot of change at once, a lot to embrace and understand, but I knew it was time for the chapter to take it to the next level.

Our efforts resulted in a greater chapter in many ways:

We are currently experiencing incredible membership growth; turning around a streak of declining membership levels to 7 straight months of more new members!

Members aren't just joining, they are staying! We have a 76% retention rate, which is incredible and one of the highest in the country.

Membership involvement is greater than it has been in recent years with 23% of the chapter giving at least an hour of their time to volunteer with us.

We successfully launched a new raffle to raise funds for the JPA Scholarship Fund which allows us to give 5-10 scholarships to chapter members for continuing education and/or professional development.

The new Mentor Cafe resulted in 8 pairs of Mentors and Mentees which is a powerful tool in professional development for our members.

The CMP Study Program was reinvented resulting in almost 3 times the number of participants this year over last! This just makes us and the industry stronger!

I can go on and on about what we have accomplished this year, but I know you can see it for yourself in the energy that is radiating from MPI D/FW.

As for me, I would like to thank each and every one of you for allowing me to serve as President this year. I am leaving this role stronger, wiser, more diplomatic (smile) and overall a better leader, mother, wife, and person. MPI D/FW has been a big part of my life, you are my family and I love the support you have shown over the years.

I am forever grateful.

There is one more thing before I go... I made a promise to you, the members, at the beginning of this term and I am excited to tell you that the promise will be fulfilled. It's SUPER exciting and will make an incredible difference for the chapter. What am I talking about? Be at the June Awards Dinner to find out!

Thank you for Experiencing, Embracing and Encouraging the Difference this year.

It has been an honor to serve you,

**Amanda Wells, CMP**  
**Chapter President, 2014-2015**

*MPI D/FW Congratulates Peg Wolschon, CMP, CTA the  
2015 Colleen Rickenbacher Leadership Award Recipient  
Recognized at the 13<sup>th</sup> Annual CMP/CMM Recognition  
Breakfast*



**We cordially invite you to join us for a night of fun and excitement among your MPI DFW chapter family!**

Marriott Courtyard Grapevine  
2200 Bass Pro Court, Grapevine, Texas 76051  
Thursday, June 25, 2015  
6:30 – 11:00 p.m

**Our Program**  
6:30p.m. Registration and Cocktail Reception  
7:30 p.m. Call to Dinner and Awards Ceremony  
10:30 p.m. Evening comes to a close

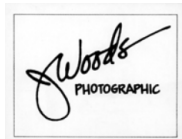
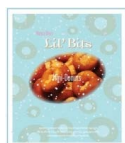
**Attire:** Dress for this event is business; cocktail attire is recommended  
**Parking:** Complimentary

Member/Non-members or Guests: \$50 \* Students: \$26 \* Tables of 8:  
**Registration Closes at 5:00pm on Monday, June 22, 2015**

For more information, please contact the Chapter Office at 972-869-3836  
[info@mpidfw.org](mailto:info@mpidfw.org)



**Thank you to our Chapter Partners!**



The Colleen Rickenbacher Leadership Award is one of the four lifetime achievement awards presented by the chapter. This award recognizes an MPI member for a career of outstanding leadership contributions, commitment to education and advocacy in the cause of professional certifications.

**Congratulations to the Colleen Rickenbacher Leadership Award Finalists**



Carol Benavidez, CMP, CMM      Dara Hall, CMP, CMM



**13<sup>th</sup> Annual CMP/CMM Event Committee Members with Karen Hughes**

L to R: Sherry DeLaGarza, CMP, CMM; Shari Lashlee, CMP, CMM; Peg Wolschon, CMP, CTA, Colleen Rickenbacher, CMP, CSEP, CPC, CTA, CPECP, Keynote Speaker Karen Hughes, Dara Hall, CMP, CMM – Event Chair, and Betty Garrett, CMP. Not pictured: Pat McCain, CMP

**The event was sponsored by:**



**CRLA Advisory Council and Past Award Recipients**

Wendy Foster, CMP - 2014 Recipient and 2015 Chair

Hattie Hill, CMM - 2009

Jim Monroe, CMP, CSEP - 2008

Steven G. Foster, CMP - 2007

Betty Garrett, CMP - 2006

# SUPPLIERS!!

Don't miss out on this opportunity!!

## The MPI D/FW Chapter "Mini-Showcase"

**Keep your company top of mind and let us help you sell your space!**

**We recommend you seize this marketing opportunity and here's what you get for the affordable fee of \$300.00:**

- ♦ **An exhibit table** during the July 23rd Chapter meeting to display products/services and experience quality face time with members & guests
- ♦ **Electronic Advertising** your company will be included in our weekly emails and the thank you email as a sponsor for our event after the event closes for 5 total weeks

**Small investment: For the cost of taking a few clients to lunch or can have weekly marketing exposure to over 1300 Meeting Professionals during the five week advertising campaign!**

For additional information or questions, please contact:  
Kelly Moore  
VP of Finance & Sponsorship, 972-789-3032  
[vpfinance@mpidfw.org](mailto:vpfinance@mpidfw.org)

## Have you registered for WEC?

WEC features programming and people that will allow attendees to think and grow in new ways. Attendees will have the opportunity to explore a variety of topics that will not only impact their individual performance, but also understand the impact to the industry as a whole. WEC educational sessions give attendees the best tools, exposure to sound business practices and the latest business trends.

Click for more info and to register!



Dana Rhoden, CMP, CMM – 2005

Sally Goldesberry, CMP, CMM – 2004

Bill Boyd, CMP, CMM, CITE – 2003

Mary Lynn Novelli, CMP – 2002

Phyllis Firebaugh, CMP – 2001

Pat McCain, CMP – 2000

Colleen Rickenbacher, CMP, CSEP, CPC, CTA, CPECP



CRLA Recipients: L to R: Steven Foster, CMP; Phyllis Firebaugh Craig, CMP; Mary Lynn Novelli, CMP; Colleen Rickenbacher, CMP, CSEP, CPC, CTA, CPECP; Former Under Secretary Karen Hughes; Betty Garrett, CMP; Peg Wolschon, CMP, CTA, and Bill Boyd, CMP, CMM, CITE

## Mentor Salsa Showdown!

On May 6, MPI D/FW held its first Mentor teambuilding event in appreciation for all efforts and ideas the mentors and mentees put into the MPI D/FW Mentor Program over the past 10 months. It was an evening full of fun, networking, and exchanging best practices while the teams competed in making salsa. (sponsored by iEntertainment and Freeman AV).

We are looking forward to another great year with our mentors and mentees!



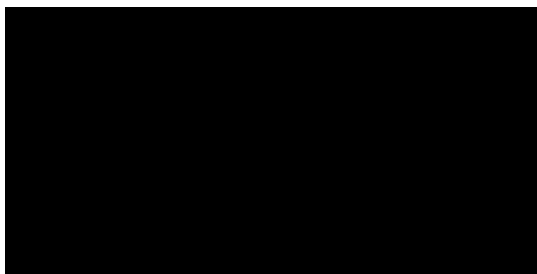
Sign up today to be a Mentor or Mentee for the 2015-2016!

Email [Erin Lucia](mailto:Erin.Lucia) for more info!

## Get Ready MPI D/FW!

**Our July Chapter Experience will be an Experience to Remember!**

WEC Sneak Peak! Kai Kight, WEC 2015 speaker will address the chapter on how to transform your leadership skills into momentous experiences. Join us for a program that will leave you inspired. Kai Kight, an innovative violinist and composer, he is sure to bring you fresh inspiration that you can use in life and work. Kai seamlessly fuses his diverse expertise on creativity into an experience that you will not want to miss.



Kai Kight is an emblem of purpose and ingenuity. He believes in a future where all feel compelled to offer their unique passion to the world. A product of Stanford University's Design School, Kai remains fascinated by the leaders, artists, and companies who dare be different. As both a Mayfield Fellow and Kleiner Perkins Designer Fellow, Kai has proven to be part of the next generation of innovative talent and intellect taking Silicon Valley and the world by storm. Kai teaches individuals and organizations how to become game-changing leaders in their lives and work. He has created impactful experiences for audiences ranging from top executives in the Digital Media industry to millennial generation employees at PricewaterhouseCoopers. His mesmerizing and original violin performance beautifully becomes a sonic metaphor for the core of his message: to inspire people to compose a part of imagination and fulfillment.

Join us as we honor chapter members for their years of membership. VP of Membership, Paige Mejia and O.D. O'Donnell will conduct the annual pin ceremony. If you are celebrating one, five, ten, fifteen, twenty, twenty-five, or even thirty years of membership with us - we look forward to seeing you there.

**When: July 23, 2015**

**Where: Westin Dallas Park Center** 10710 Merit Drive, Dallas TX 75251

**Time:** 11:00 am - 11:30 am - New Member Orientation & Mentor Café

11:00 am - 11:45 am - Registration & Networking

12:00 noon - 1:30pm - Luncheon and Program

[Registration Opens Soon! Stay Tuned!](#)

### Summer Has Begun Renewal Drawing!

Are you up for renewal this month? Renew your MPI membership in June and you will be entered into a drawing for one of THREE great prizes. The winner will pick one from the list below:

1/2 off registration to WEC 2015 in San Francisco (Aug 1-4) or EMEC 2016 in Copenhagen (Feb 7-9)

6 month extended membership

2 complimentary tickets to RENDEZVOUS 2015 (Aug 3) at WEC

**Renew today**



## Big, Big BIG Thanks to all who Participated in the JPA Scholarship Fund Raffle

Through your generosity and the incredible support of our Chapter Partners, we I am proud to announce we were able to raise **\$2500!**

That's up 5-10 scholarships for continuing education or professional development for MPI D/FW Members!

Thank you to our Chapter Partners for their Generous Donations!



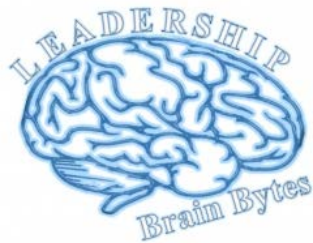




### Picture This Green Screen

Additional Donations by:

Sherry DeLaGarza, CMP, CMM and Nicole Stokes

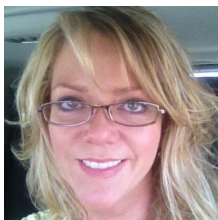


### Commitment Starts in the Heart

Some people want everything to be perfect before willing to commit themselves to anything. But commitment always precedes achievement. That's why all great athletes recognize its importance. NBA legend Michael Jordan explains that "heart is what separates the good from the great." If you want to make a difference in other people's lives as a leader, look into *your* heart to see if you're really committed.

*The 21 Indispensable Qualities of A Leader - John C. Maxwell*

## Members on the Move



**Warwick Melrose welcomes a New GM**  
Deanna Beckham, Associate Director of Group Sales, Warwick Melrose Hotel, announces Andrew Wright has been named General Manager.

## Welcome New Members

- Mandy Archer- RX Worldwide Meetings
- Erica Barnes- Hilton Garden Inn Lewisville
- Elisa Berdych- Courtyard & TownPlace Suites Grapevine
- Bobbie Caldwell- The Freeman Company
- Meredith Caldwell- Magic Moments Parties and Events
- Chloe Calloway- University of Texas at Dallas
- Barbara Campbell, CMP, CCTE
- Marsha Cordle- Tanglewood Resort and Conference Center
- Robert Dorsey
- Samantha Elliott- Texas Society of CPAs - CPE Foundation, Inc.
- Gary Evans- Marriott Las Colinas
- Marlene Garrett, CMP- American Fire Sprinkler Association



**Teambuilding at the House of Blues**

Kim Richardson, Sales Manager, House of Blues Dallas, presents some new team building opportunities. A group can be challenged to a photo scavenger hunt through the venue or enjoy Rock Star Bingo in Crossroads Restaurant in which a DJ plays music instead of the usual bingo numbers and letters. Rock Star Bingo is also held for individuals one Thursday per month in Crossroads.



**New Event Space in Denton**

Dana Lodge, CMP, Director of Sales announces the recent opening of The Milestone Mansion, an all inclusive wedding venue and the adjacent The Barn in Aubrey, Denton County. The Milestone Mansion accommodates up to 300 guests in a southern plantation style.



**Jennifer Wasserman**

Jennifer Wasserman was named Director of Sales & Marketing, The Highland Dallas. David Lemmond is General Manager of The Highland Dallas, Curio Collection.



**Access Announces New Additions**

Patty Phelps, VP-Sales, Access Destination Services-Texas, announces Bryan Raley, Program Manager in the Dallas office; Sarah Bishop, Operations Manager in the Hilton Anatole office; and Marissa Fowler, Sales Coordinator for their San Antonio/Austin offices.



**VWV Wins Silver**

Amanda Wells, CMP is excited to announce VWV won Silver for Best Event Production at this year's Ex-Awards. VWV was recognized for their work on the 2014 MillerCoors Distributors Conference. More than 1,000 entries were received for Experiential Marketing's most prestigious awards event.

Karen Gillingham- American Airlines Training & Conference Center

Virginia Hall- Meeting Professionals International

Julie Hanes, CEM - Powder Coating Institute

Patricia Hall, CMP

Suzan Jenkins- Virbac

Tracy Lake

Holly Maldonado- Sheraton DFW Airport Hotel

Danielle Marshall- Weaver

Valerie McGiboney- ConferenceDirect

Raquel Navarette- Madeleine Crouch and Company

Cassie Poss- Madeleine Crouch and Company

Michelle Raczynski, CEM- Corporate Events & Occasions

Randy Roberson- Randy Ro Entertainment

Michael Roberts- RX Worldwide Meetings, Inc.

Misty Ruger- Creative Cuisine

Tamie Smith- Omni Hotels & Resorts

Crystal Terwilliger- MGM Grand Las Vegas

Genevieve Twing- Student- Richland College

Daniel Walters, HMCC

Conchevia Washington, CHSP, CDMP- Philadelphia CVB

Jonathan Watkins- Brilliant Events, Inc.

Beth Wehrman- San Luis Resort, Spa & Conference Center

Cathy Welch- SEI Meetings & Incentives

Rodney London Williams- HelmsBriscoe

**Sponsor Spotlight**

Thank you to these sponsors for supporting our May Chapter Experience!



**BECOME A SPONSOR!**



**Cooper Hotel Completes Renovation**

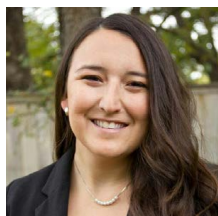
Hayley Hamre, Sales Manager, and Lyndsey Brannum, Catering Coordinator at The Cooper Hotel, announces the completion of the multi-million dollar campus-wide renovation including a revamp of the 61 guest rooms, and public spaces with sleek, contemporary furnishings.



Do you want to get your company or organization in front of more than 1300 event professionals? Do you have a service or a venue to provide for one of our Chapter Experiences?

Email Kelly Moore, Finance Chair at [kelly.moore@ihg.com](mailto:kelly.moore@ihg.com) for more information!

More than 85% of MPI Members buy from other MPI Members!



**Congratulations Jessica**

Jessica Marbut was promoted from Sales Representative to Director of Sales at Plano Centre.

**MPI D/FW membership includes representation in some of the large corporations and associations including:**

AdvoCare, American Heart Association, Bell Helicopter, Dr. Pepper Snapple Group, Ericsson, Ernst & Young, Exxon Mobil, Frito Lay, GlaxoSmithKline, Lennox Industries, Levi Strauss, Mary Kay, NEC, and VHA.

**Now that's serious potential ROI!**



**Innovia Events Announces New Staff**

Michael Ruocco, CMM, President - InnoVia Events, announces Marty Ybarra as Global Account Manager; Jim Reeves, Program Coordinator and Jazzie Gonzales, Production Assistant.



**CAREER CENTER**

Great News! The Career and Resources page on the MPI D/FW.org website has changed. You can now directly access the MPI International Job Board from here. Looking for a job? Looking for new team members?

**Go to the MPI Career Center!**

**The May Chapter Experience ROCKED!!**

You know it's going to be good when there are tacos involved!









Do you have **IDEAS** or **SUGGESTIONS** to make **MPI DFW BETTER?** *[Share Your Feedback!](#)*



### **July**

- 9<sup>th</sup>** - Kick-off All Committee Meeting
- 14<sup>th</sup>** – Board of Directors Meeting
- 23<sup>rd</sup>** - Chapter Experience

### **August**

- 1<sup>st</sup>** - CMP Study Day
- 11<sup>th</sup>** – Board of Directors Meeting
- 17<sup>th</sup>** - CMP Informational Session
- 31<sup>st</sup>** - CMP Study Group

### **September**

- 8<sup>th</sup>** - Board of Directors Meeting
- 14<sup>th</sup>** – CMP Study Group
- 21<sup>st</sup>** - CMP Study Group
- 24<sup>th</sup>** - Chapter Experience
- 28<sup>th</sup>** – CMP Study Group



#### ABOUT MPI

MPI—founded in 1972—believes that meeting and event planners serve a critical role in the success of business, and is committed to giving its members the very best in professional development, business opportunities and a vibrant industry community.

© 2013-14 Meeting Professionals International Dallas/Fort Worth Chapter