

March 2015 Monthly Newsletter



March/April 2015

“Beware the barrenness of a busy life.”

- Socrates

MPI D/FW educates and prepares its members for their changing roles in the greater business world. The association validates relevant knowledge and skills while simultaneously demonstrating a commitment to meeting excellence. Record five-time winner of "Chapter of the Year"

A Message from the President...

At WEC last summer, I had the opportunity to hear Nolan Bushnell speak. As I am not being really up on the .com world and computers and the like, I really didn't know who Nolan Bushnell was other than he had founded Atari. I was not around for Atari, but I am married to a gamer and raising a gamer and I understand the impact that system has had on the world.

Nolan Bushnell's story is much more than a guy who loved robots and electronics and had success and lived happily ever after, so much more.



It's a story of rags to riches and back to upper middle class and never giving up.
It's a story of an incredibly smart and passionate person never able to catch a break.
But it's also a story of a man who isn't afraid of taking a chance, of failing and being able to roll with the punches with a smile.

After losing \$28 million on a robot he just *knew* would be in every household in America, Bushnell took a chance on a pizza parlor branded Coyote Pizza, but when his robotic coyote actually was a robotic mouse, the quick thinking entrepreneur switched gears and founded Chuck E. Cheese.

What I have learned from this part of Mr. Bushnell's story is that sometimes life throws us curveballs and we have to adjust and keep going. Being afraid of failure or giving up when things don't go always to plan, is not an option. As event professionals, we should always have a Plan B, or Plan C, D.... and not be afraid to switch to each plan if needed.

Involvement in MPI has allowed me to try new things, new ideas and have a network of professionals and friends who I know won't let me fail. This year, the Chapter has tried a lot of new ideas with our Chapter Experiences, Chairman's Challenge 5K, JPA Raffle, Membership, Communication and Fundraising Campaigns; some have not gone according to the original plan, but that did not deter us from being successful! We just switched to Plan B!

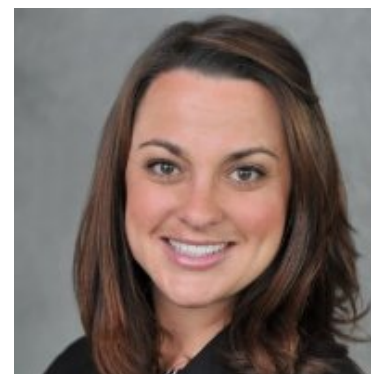
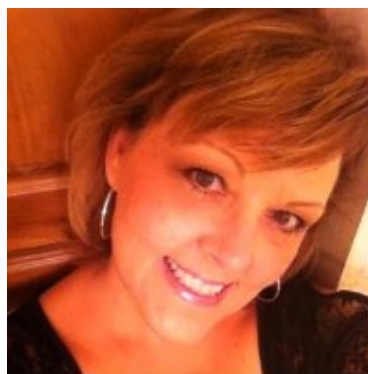
We have had incredible success with new chapter sponsors, an engaged social media following, a new website to be launched by July 1, and a growing number of new and renewing members each month.

I invite you to not only be involved in the chapter, but *embrace* change, *encourage* innovation and *educate* others with your *experience*. This is YOUR chapter. Own it and believe in it.... Great things will come.

It is an honor to serve,

Amanda Wells, CMP
Chapter President, 2014-2015

Congratulations to the Survey Contest Winners:



Amanda Westlake

The Westin Stonebriar

Neva Fanelli

A & N Awards and Promo

Alexis Tolman-Davis

Sheraton Arlington Hotel



Awards of Excellence

Nominations are now being accepted for MPI D/FW Annual Awards of Excellence

Annually, the MPI D/FW chapter recognizes our members who have made a difference in our chapter and profession. The Awards Nominations Committee is pleased to announce the call for nominations for the 2014-15 term and seeks your input, as a chapter member in good standing, to nominate your fellow chapter members. Your nominations are confidential and will only be received by the committee co-chairs. Please take time today to nominate and recognize your peers for their outstanding contributions. The categories include:

Planner of the Year

Supplier of the Year

Rising Star of the Year

Volunteer of the Year

Chapter Committee of the Year

*lists of those eligible for each of these awards are provided on the chapter website.

Nominations Close Friday, April 24 at 5:00pm

[CLICK HERE TO START THE NOMINATION PROCESS](#)

Spring Time Renewal Drawing! Renew your MPI membership in April and you will be entered into a drawing for one of THREE great prizes. The winner will pick one! [Renew today!](#)

IT'S TIME
to renew



2015

1/2 off registration to WEC 2015 in San Francisco (Aug 1-4) or EMEC 2016 in Copenhagen (Feb 7-9)

MPI Store shopping Spree: Pick any five items in the MPI Store at no cost. CMP Study Guide excluded from offer.

6 month extended membership



The Summit will provide event professionals, event suppliers, and business leaders with the tools to make the best decisions in an ever-changing market of technology trends. This one-day educational conference is open to all MPI members and nonmembers. You may attend the morning session(s), luncheon, and/or afternoon session(s) – whatever your schedule allows but we hope you will choose all three to maximize your education day!

You will learn about social media marketing and how it can take your event to the next level. After all, isn't social media where it's at? The audio visual and technology aspects of an event can be overwhelming for most. Learn what is new and how to incorporate it with your programs to get that WOW factor.

Then we keep up the tech talk during our luncheon where you will hear from TheEventNerd about how tech is changing the face of meetings. Learn about how technology can connect people, extend the reach of events, and create immersive experiences that guests and clients alike connect with.

Last but not least stay for our afternoon session. Are you tired of carrying around that heavy event binder? You are about to experience a training session that will change how you do business. Learn about the best apps to use to organize your event and your personal life. Quick tips on how to use your tablet to its fullest potential. This is a must attend session!



MPI Chairman's Challenge 5K RUN/WALK

Saturday, April 25, 2015, Brookhaven College

Check-In: 7:30 – 8:30 AM, RUN/WALK at 9:00 AM

Register this week at www.mpidfw.org

EARLY BIRD RATES BEFORE APRIL 4

QUICK FACTS

RAISE MONEY FOR A GOOD CAUSE:

- Funds raised go to the MPI Foundation and to Chapter for Professional Education Scholarships, Grants, and Chapter Education Programs.
- OUR GOAL IS \$5,000. MPI D/FW, WE CAN DO THIS!! Get with the program!

AN EVENT FOR FAMILIES AND SERIOUS RUNNERS ALIKE:

- Kids 12 and over can register as adults and RUN or WALK.
- Kids under 12 can WALK at no charge. HEY MOM! Strollers are OK.

OUTSTANDING COURSE:

- All on a paved jogging trail on the college campus. No public streets

We look forward to seeing you at Technology Summit 2015.

Learn it. Share it.

When: April 23, 2015

**Where: Hilton Garden Inn Dallas Lewisville, 78 SH 121 Bypass,
Lewisville TX 75067**

Time: 9:00am - 2:00pm Registration
9:30am - 11:00am Morning Education
11:00am - 11:30am New Member Orientation / Mentor Café
12:00pm - 1:30pm Lunch program
2:00pm - 3:30pm Afternoon Education

Fees: Member: \$35.00 (Luncheon only)
Member: \$60.00 (Luncheon, Morning and Afternoon Education
Sessions)
Non-Member: \$45.00 (Luncheon only)
Non-Member: \$75.00 (Luncheon, Morning and Afternoon Education
Sessions)
MPI Student Member: \$24.00 (Luncheon only)
MPI Student Member: \$35.00 (Luncheon, Morning and Afternoon
Education Sessions)



Pre-Payment by Credit Card is required.

**ON LINE REGISTRATION CLOSES on Monday, April 20, 2015 at
5:00 P.M.**

**For additional information please contact the Chapter Office
at info@mpidfw.org**

WELCOME
NEW MEMBERS

Corina Balsells, CMP - Cornerstone Credit Union League

HEALTHY SNACKS:

- Fruit, Snack Bars, Beverages

FUN MUSIC:

- Provided by Cameron Fox and iEntertainment

OPEN TO EVERYONE:

- Members and Non-Members can participate

A WAY TO BUILD BUSINESS RELATIONSHIPS:

- Suppliers: Invite a meeting planner and pay their entry fee
- Planners: Reward a valued supplier: Invite them and pay their entry fee

A COMPANY TEAM BUILDING OPPORTUNITY:

- Enter as a Team of 4 or more people and compete with other teams

GAIN EXPOSURE FOR YOUR COMPANY:

- Sponsorship Packages available for as low as \$500, and up to \$2,500

A WAY TO SOLIDIFY A FRIENDSHIP:

- Invite a friend to run or walk with you. Doing something fun together.

RUN/WALK: \$30 BEFORE APRIL 4, \$35 THEREAFTER

TEAMS: \$25 BEFORE APRIL 4, \$30 THEREAFTER

MPI Foundation Chairman's Challenge 5K Run/Walk

Interested in Sponsoring? Contact:

Betsy Troup: BetsyTroup@dmihotels.com

OR

[Click here to register to run/walk today!](#)

**Want to register a team of 4-10 people? Contact Kayla
at MPI5KChallenge@gmail.com**

Thank you to our current sponsors

Elizabeth A. Baryshev - B.T.I.P Inc

Chris Carter - Cascades Events Center

Christy N. Garner - UT Southwestern Medical Center

Bryan Garza - Meeting Professionals International

Lauren-Ashley Glatz - The Capital Grille Dallas

Hayley Hamre - Cooper Hotel

Jessica A. Hansen - City Electric Supply, Co

Kimberly Hutcherson, CHSE - TravelSolutions by Campbell

Annie Matthews - PSAV

P'lar Pearson - Bowlmor-AMF

Terry L Plunkett - The Pinnacle Corporation

Andrea Rodriguez

Allie A. Salgueiro - University of North Texas

MichaelSchultz - Hello! Texas

Terry Walker - Richland College



JPA Scholarship Fund Raffle

Support the Chapter's Scholarship fund by buying a raffle ticket to win one or more of our fabulous prizes! Find any Board Member at a Chapter Experience (or otherwise) or contact Roma Giordano by email at RGiordano@caesars.com

Prizes Include:

Fort Worth Experience: Overnight stay at the Omni Ft. Worth, Billy Bob's Tickets and a Basket



iEntertainment

Renaissance Dallas Hotel

Topgolf

Racing Systems

Fort Worth Convention & Visitors Bureau

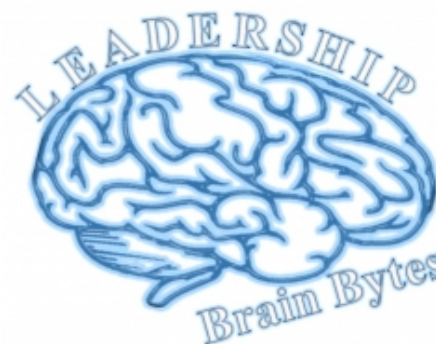
Rancho Bernardo Inn

Experient

Peppermill Resort

Tradewinds Island Resorts

La Torretta Lake Resort & Spa



Character: Be a Piece of the Rock

How a leader deals with the circumstances of life tells you many things about their character. Crisis doesn't necessarily make character, but it certainly reveals it. Adversity is a crossroads that makes a person choose one of two paths: character or compromise.

Every time he chooses character, they become stronger, even if that choice brings negative consequences. The development of character is at the heart of our development not just as leaders, but as human beings.

A simple note of thought in becoming the person others will want to follow
Leader

Quoted from: John C. Maxwell's
The 21 Indispensable Qualities of A

Las Vegas Experience: Caesars Palace stay, Dinner, Show and Limo Ride

Jimmy Buffet Concert Tickets

Kevin Hart Tickets

Shania Twain Concert Tickets

Dinner at Ruth's Chris.... and much much more!

Tickets are \$10 each or 3 for \$25

The raffle will take place at the May Chapter Experience

You do NOT have to be present to win

Sponsor Spotlight



Become A Sponsor!

Do you want to get your company or organization in front of more than 650 event professionals? Do you have a service or a venue to provide for one of our Chapter Experiences?

Email Kelly Moore, Finance Chair at kelly.moore@ihg.com for more information!



Need Something?

Check out the Supplier Marketplace and *BUY MPI!!!*

CAREER CENTER

Great News! The Career and Resources page on the MPI D/FW.org website has changed. You can now directly access the MPI International Job Board from here. Looking for a job? Looking for new team members? Go to the MPI Career Center.



April 2, 2015 * 6pm-7pm *

Las Colinas Country Club

More than 85% of MPI Members buy from other MPI Members!

Now that's serious potential ROI!

This is a great opportunity to learn the procedures, expectations and responsibilities of being an MPI Committee Chair.

The All Committee Meeting will be held immediately following.

Take the next step in your MPI Career! Be a Committee Chair!

Being Influential At Work and Beyond Recap:





"Chairing the DFWMPI February Luncheon was a wonderful opportunity to meet some of the newer MPI members and network with old friends. Collaborating with the Committee, the Westin Hotel and the MPI Board to make sure all the details were in place was interesting, and a lot of fun to do. If you haven't yet considered being part of the Planning Committee for a luncheon, you should! It's very rewarding on so many levels."

- Lianne Pereira, CMP, CMM

Congratulations!



April 2015

2nd - Chapter All Committee Meeting.



**Do you have IDEAS or
SUGGESTIONS
to make MPI D/FW
BETTER?**

Share Your Feedback!

14th - Board of Directors Meeting

Barbara Cummins, CMP, CMM

23rd - Chapter Experience- Tech Summit

**24th - Communications Committee Meeting
Earth Day Texas - Fair Park, Dallas**

**25th - Chairman's Challenge 5K
Earth Day Texas - Fair Park, Dallas**

26th - Earth Day Texas - Fair Park, Dallas

CMP Study Groups Spring 2015

ABOUT MPI

MPI—founded in 1972—believes that meeting and event planners serve a critical role in the success of business, and is committed to giving its members the very best in professional development, business opportunities and a vibrant industry community.

© 2013-14 Meeting Professionals International Dallas/Fort Worth Chapter