



eCURRENT

A Monthly Digital News Communication for MPI D/FW Members

[Upcoming Events](#) | [Join a Committee](#) | [Current Sponsors](#) | [CMP](#) | [Member Care](#)

In This Issue:

- President's Message
- MPI TS March Tech Summit
- February 2016 Chapter Experience Thank You
- April 2016 Chapter Experience
- Charity of the Quarter
- Party Fest
- Leadership Breakfast Club
- Membership
- Become a Sponsor
- Mentor Cafe
- Leadership Brain Byte
- MPI WEC 2016
- Upcoming Events

President's Message
March 2016

ALL IN! Saluting Our Volunteers!

We spend a lot of time in MPI talking about leadership and recognizing people who take on leadership roles. Within our Chapter and our industry as a whole, there are specific awards for leadership, including our chapter awards like Planner of the Year, Supplier of the Year and the Colleen A. Rickenbacher Leadership Award, and the Convention Industry Council's prestigious Hall of Leaders.

So, how do we recognize our volunteers? You know, the people who show up month after month and year after year to do things like work on a one-time project, chair a monthly program, make phone calls to members, work the registration table, or engage in one of our CSR projects; the people who want to be involved but are less compelled to be the leader. We also have awards for them like our Chapter Spirit Award that was awarded to Elizabeth Baryshev at our meeting last month or our Volunteer of the Year Award that will once again be announced in June at our annual awards event.

Yes, we have those awards as well, but the gist of my message today is not about awards. Instead, it's about our many volunteers who do what they do, selflessly, without ever thinking about whether they will win an award in exchange for the time they give to our chapter.

In the 22 years I have been a member of the MPI D/W Chapter, I have watched and worked with hundreds of members who have joyously and generously served in a volunteer role with the sole intent of being actively engaged in our local industry community; to enrich their professional life and to make our chapter the best it can be. All the while, asking for nothing more and nothing less than a pat on the back and a thank you for being a contributor.

Chapter Volunteers, **THANK YOU!** Thank you for all you do; for your time, your effort and your caring attitude. Our organization runs on the strength and power of people like you.

Today, I salute you! Thank you all for being **ALL IN!**



Tony Cummins, CMP, CMM
Chapter President

It's almost time!

...for the biggest chapter event of the year!

TS Tech Summit Presented by MPI D/FW Chapter

When: March 24, 2016

Where: Irving Convention Center

500 West Las Colinas Boulevard

Irving, TX 75039



DALLAS/FORT WORTH CHAPTER

MEETING PROFESSIONALS INTERNATIONAL



PRESENTS:

TS

TECH SUMMIT

MARCH 24

8AM to 6 PM

Irving Convention

500 Las Colinas Blvd.

Irving TX 75039

KEYNOTE SPEAKER



Grady Lee, Chair
Impact 2030



Matthew Donnegan-Ryan,
Fast Bar



Julinna Fazio,
Tiger Oak Media

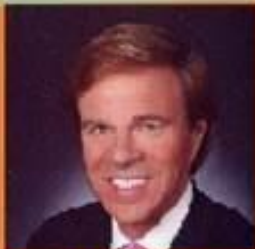


David Dubois, CEO
IAEE



Mike Lynn, Exhibit
Manager of Year

FEATURED SPEAKER



Scott Murray, Emmy
Award Winner

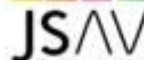
Technology is Changing our Events- The Future is NOW



Irving Convention and Visitors Bureau



IRVING CONVENTION CENTER
AT LAS COLINAS



360 Audio Visual



Premier Technology Training For Meeting and Event Mangers
Conference | Trade Show | Workshops | Taste of Irving | Cocktail Reception

At the TS Tech Summit, the future of events & trade shows is unveiled by industry leaders gathered under one roof. Imagine being able to manage your events from anywhere in the world at the touch of a finger. This is a reality today and some of these solutions will be made available at this event. Hear national speakers, attend educational workshops and see the most innovative solutions at the TS Tech Summit.

[Register today](#) and pay \$45 instead of \$145 - limited to the 1st 80 Planners.

Are you a supplier? Don't miss out on this opportunity - booth spaces are going fast! Some are still available... don't waste time to register (\$499 includes lunch, booth space, reception and exposure to network with a variety of marketing and event professionals and to learn cutting edge technology relevant to our industry!)

Prospective Exhibitors: [Click Here](#) for more information

[TECH SUMMIT AGENDA](#)

Thank You to our February 2016 Chapter
Experience

Sponsor and Venue



April 2016 Chapter Experience: Save the Date!
CMP/CMM Recognition Breakfast



When: April 28, 2016
Where: George W. Bush Presidential Center

Charity of the Quarter



Did you know [The Gatehouse](#) Grapevine community will house up to 96 families!? This also includes a community/ conference center, in-neighborhood counseling centers, general store, walking trails and commercial space. This community, which allows members to stay up to 2½ years depending on their individually tailored program, provides safe refuge and creates the environment for women and children in crisis to walk the path toward permanent change.

There are various ways to help donate to our friends at The Gatehouse. One way is Amazon, [Click Here](#) for their wishlist.

For more information, contact VPLeadership@mpidfw.org

Are you ready for Party Fest!



Want to network at one of the most fun and educational industry events of the year?

PartyFest is just around the corner on April 6th and our very own Steve Kemble is hosting the event. Great news that once again the MPI D/FW Chapter will have its own booth. We are looking for volunteers to help during the day and need your help in covering 2-3 hour shifts.

Please contact Paige Mejia, VP of Membership to sign up for the booth. vpmembership@mpidfw.org

Save the Date: Leadership Breakfast Club

May 11, 2016
Details Coming Soon!

Membership

New Member Incentive --

Feed Your Mind (and Your Career) with MPI's Professional development. MPI Members have access to all online education at no additional cost. Join MPI at www.mpiweb.org/join and use "FacebookMPIin2016" to save \$50 when you join as a new member before March 31.

Renewal Incentive --

Are you up for renewal this month? Renew your MPI membership this month and you will be entered into a drawing for one of two great prizes. The winner will pick either one! Either a Complimentary CMP Study Kit or 1 year extended MPI membership. Renew today!

Scholarship Opportunities --

WEC scholarship opportunities – members should submit requests as soon as possible for the best opportunity for approval. All WEC scholarship applications will need to be submitted no later than the end of March.

Chapter Grants Available --

Ready Set Meet Chapter Grants from the Parking Spot – 4 additional Ready Set Meet Grants are available now. Rocky Mountain and Kansas City have already applied and will be awarded at the end of the month. Chapters that are eligible are: Arizona, DFW, Eastern Great Lakes, Georgia, Greater New York, Orlando,

Houston, New Jersey, North Florida, Ohio, Orange County, Philly, Pittsburgh, Southern California, St. Louis, Tennessee, Texas Hill Country, Westfield.

**BECOME A
SPONSOR**

Want Exposure? Consider becoming a sponsor at for our next event!

5 Reasons to Sponsor the next MPI event:

1. Reach 1500 Potential Business Prospects
2. New Business Development
3. Professional and Personal Network Development
4. Penetrate a Market
5. Increase awareness of your service or product.

Why aren't you sponsoring the next MPI event? For more insight or info contact VPFinance@mpidfw.org

Mentor Cafe



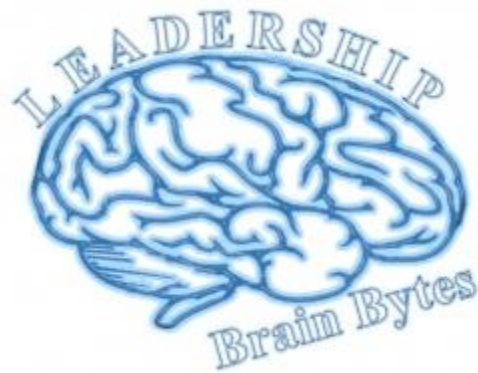
Mentoring is a gift to touch someone's life and career with advice, support and connections that are valued forever. At MPI we realize that and aim to support the idea of creating learning experiences for other people. Ask yourself today "why would I need a mentor" or "why should I be a mentor". We want to help you answer those questions.

Fred H. Knieberg, CMP had the original idea to create a Mentor Program for the MPI D/FW Chapter. Knieberg dedicated the last few years of his life to creating a successful program designed to provide growth for experienced professionals within the chapter in the development of other members. To honor his work, the chapter invites you to sign up to be a mentor or mentee and participate in this great program.

There are multiple ways to participate in the MPI D/FW chapter Mentoring Program.

- Visit the Mentor Cafe. The Mentor Cafe is held between 11:00-11:30 am prior to the MPI D/FW Chapter's Monthly Experience that include an educational program.
- Become a Mentee. Complete the [Mentee Application](#) to provide our mentor matching committee with information on your background, experience and goals to help us identify a best mentor match for you.
- Become a Mentor. Share your experience and contacts with a new person wanting to learn by completing the [Mentor Application](#) with your background and special skills.

For more information, [Click Here](#)



Passion ~ Take This Life and Love It

When a leader reaches out in passion, he is usually met with an answering passion.
~ John C. Maxwell

John Schmatter not only eats Papa John's Pizza, he breathes, sleeps and lives it. It is always his predominating thought. Lehman Brothers analyst Michael Speiser said of him in Success magazine. "Pizza in Schmatter's life, and he takes it very seriously." Schmatter's philosophy is simple and straightforward. "Concentrate on what you do well," he advises, "and do it better than anybody else."

Experts spend a lot of time trying to figure out what makes people successful. They often look at people's credentials, intelligence, education and other factors. But more than anything else, passion makes the difference. If you look at the lives of effective leaders, you will find that they often don't fit into a stereotypical mold. What makes it possible for people who might seem ordinary to achieve great things? The answer is passion. Nothing can take the place of passion in a leader's life.

Take a look at four truths about passion and what it can do for you as a leader:

1. Passion Is the First Step to Achievement

Your desire determines your destiny. Think of great leaders, and you will be struck by their passion: Gandhi for human rights, Winston Churchill for freedom, Martin Luther King Jr. for equality, Bill Gates for technology.

2. Passion Increases Your Willpower

There is no substitute for passion. It is fuel for the will. If you want anything badly enough,

you can find the willpower to achieve it. The only way to have that kind of desire is to develop passion.

3. Passion Changes You

If you follow your passion~instead of others' perceptions-you can't help becoming a more dedicated, productive person. And that increases your ability to impact others. In the end, your passion will have more influence than your personality.

4. Passion Makes the Impossible Possible

Human beings are so made that whenever anything fires the soul, impossibilities vanish. A fire in the heart lifts everything in your life. That's why passionate leaders are so effective. A leader with great passion and few skills always outperforms a leader with great skills and no passion.

Reflecting On It

Is passion a characteristic of your life? Do you wake up feeling enthusiastic about your day? Is the first day of the week your favorite, or do you live from weekend to weekend, sleepwalking through your everyday routine? How long has it been since you couldn't sleep because you were too excited by an idea? If passion is not a quality in your life, you're in trouble as a leader. The truth is that you can never lead something you don't care passionately about. You can't start a fire in your organization unless one is first burning in you.

Bringing It Home

To increase your passion, do the following:

Take your temperature. How passionate are you about your life and work? Does it show? Get an honest assessment by querying several coworkers and your spouse about your level of desire. You won't become passionate until you believe passion can be the difference maker in your life.

Return to your first love. Many people allow life and its circumstances to get them off track. Think back to when you were just starting out in your career- or even further back to when you were a child. What really turned your crank? What could you spend hours and hours doing? Try to recapture your old enthusiasm. Then evaluate your life and career in light of these old loves.

Associate with people of passion. It sounds hokey, but birds of a feather really do flock together. If you've lost your fire, get around some firefighters. Passion is contagious. Schedule some time with people who can infect you with it.

Quoted from: The 21 Indispensable Qualities of A Leader - John C. Maxwell

WEC 2016

A few things to look forward to in Atlantic City



- General Sessions and Flash Point: This year's subject matter experts will offer unique perspectives that will move you to re-write the rules of your meetings and events. General session facilitator Dena Blizzard will take you on a journey to begin reshaping your approach and you'll hear from thought-provoking Flash Point speakers like Susan Cain, author of The New York Times bestseller, *Quiet: The Power of Introverts in a World That Can't Stop Talking*, and other thought leaders who will provide insight into how meetings can integrate innovative trends, groundbreaking schools of thought, and fresh frames of reference. New speakers will be added soon so make sure to check the MPI website for updates.

- Relevant Education and Certificate Courses WEC features programming and people that will allow you to explore, experience, and experiment with unconventional learning formats and cutting-edge education. We want to inspire new ways of thinking about and conducting your meetings. There are more than 80 concurrent education sessions, including certificate courses from which you can earn clock hours to certify or re-certify for your CMP. All concurrent sessions will have topical alignment with the CMP International standards. To learn more, [Click Here](#)



March 2016

- MAR 14 Spring 2016 CMP Workshop @ Protiviti
- MAR 21 Spring 2016 CMP Workshop @ Protiviti
- MAR 24: 2016 MPID/FW TS Tech Summit - Irving Convention Center at Las Colinas
- MAR 28 Spring 2016 CMP Workshop @ Protiviti

April 2016

- APR 4 Spring 2016 CMP Workshop @ Protiviti
- APR 11 Spring 2016 CMP Workshop @ Protiviti
- APR 18 Spring 2016 CMP Workshop @ Protiviti
- APR 25 Spring 2016 CMP Workshop @ Protiviti
- APR 28: 14th Annual CMP/CMM Breakfast
- APR 30 Spring CMP Study Day @ Protiviti

May 2016

- MAY 11 Leadership Breakfast Club
- MAY 26: May Chapter Experience/Luncheon

June 2016

- JUN 23: MPID/FW Awards of Excellence Dinner
-



 **DALLAS/FORT WORTH CHAPTER**
MEETING PROFESSIONALS INTERNATIONAL

Copyright © 2016 MPID/FW All rights reserved.
March 2016 Newsletter

Our mailing address is:
MPI Dallas Fort Worth Chapter
PMB 259
7750 North MacArthur Boulevard, #120
Irving, Tx 75063

Want to change how you receive these emails?
You can [update your preferences](#) or [unsubscribe from this list](#)

MailChimp