



Presidential Ponderings

A big THANK YOU to everyone who recently completed the chapter's Needs Assessment Survey. A good number of members and non-members responded. ExperiPro* is reviewing the information and will present it to the board. (*ExperiPro are the data analytics experts that the board contracted to conduct and analyze the survey results). More details to follow.

Of those responding to the survey, ExperiPro randomly selected our two prize winners. Congratulations to Julie Cerza and Jennifer Rochat who each received a certificate for a \$100 discount on a MPI membership or renewal.

A big shout out also goes to our March Tech It Out Tradeshow exhibitors! A few companies have already increased their business from contacts made at the event. Building relationships with fellow MPI members is priceless for planners and suppliers alike. BUY MPI is beneficial for everyone!

Last, but certainly not least, thank you to the CMP/CMM Recognition event team who are busy putting together a first class experience for our annual breakfast (this year a brunch!). Join us on April 27 in the Van Kluburn Recital Hall at the Bass Performance Center. We hope you'll be there to help recognize those who are so dedicated to the industry that they pursued the CMP and/or CMM designations. The 2017 Colleen Rickenbacher Leadership Award will also be presented. It is definitely a not-to-be-missed event! See you there



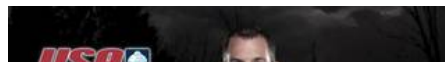
FOSSIL GROUP

15th Annual CMM/CMP Recognition Brunch

MPI D/FW is honored to host the 15th Annual CMM/CMP Breakfast as a Brunch this year on Thursday, April 27, 2017.

VAN CLIBURN RECITAL HALL AT
BASS PERFORMANCE HALL
525 Commerce Street, Fort Worth, TX 76102

Our keynote speaker will be Johnny Quinn, U.S. Olympic Bobsledder who competed in the 2014 Winter Olympics in Sochi, Russia.



calendar and not to be missed event! See you there.



Want More Out of Your Membership?

It has been proven that an involved member is a happy member. For as little as 10 minutes a month, you can introduce yourself and your business to a greater number of members, leave a legacy of improving your chapter, and just have that good feeling that you were a part of something great! Whether you can give 10 minutes to make a few calls, host a table at a meeting that you are already attending, or rally a committee for a special project, the chapter volunteer opportunities are endless.

[Go here](#) for more information about the various committees and to sign up to volunteer today!

April Membership Special

With more than 17,000 members in 90 chapters and clubs, Meeting Professionals International is the largest and most vibrant global meeting and event industry association. Join MPI at www.mpiweb.org/join or renew your membership before May 15th to be entered into a drawing to received \$100 off your membership.



- Crystal Amos, CMP - Consulting Management Innovators
- Monica Bales - Mallouf Photography
- Melissa Desaloms - Meetings Inc.
- Dvorah Evans, CMP CMM CTA - HD Vest Financial Services
- Georgia Fournier - DFW Airport Marriott South
- Tammera Hollerich - Affairs Afloat Balloons
- Kimberly Huskey - Fogo de Chao
- Allison Jernigan - Cinemark Theatres
- Debra Joyce - National Association of Catastrophe Adjusters, Inc.
- Brad Kent - Dallas Convention & Visitors Bureau
- Pam Kiekamp - Essilor of America

Click [HERE](#) for more information and to register!

Want to avoid rush hour?

Hilton Fort Worth is offering a reduced room rate of \$179 (based upon availability) for those that would like to stay the evening prior to the CMP/CMM Brunch.

The rate is only valid for April 26, 2017, and reservations must be made no later than April 13, 2017.

Please contact **Wendy Bonds Hopkins** at **817.882.1338** and mention the CMP/CMM breakfast.



2017

May 10



Get ready to stir things up for this year's volunteer recognition event. You won't want to miss this so be sure you have reported your volunteer hours to leadership! Those members who have volunteered during the 2016-17 term will be invited to a private event to show our appreciation. Mark your calendars!

May 25

In May, we will take a look at a tedious and hot topic of contracts. Always relevant and always changing. Join us to hear from a top association lawyer share trends and tips for the front lines of industry legal issues. Click [HERE](#) to Register.

June 22

We Own the Night - Please join us for an elegant evening affair at the Annual Awards Gala on Thursday, June 22nd at the beautiful Tower Club in downtown Dallas! Help us celebrate our chapter's 40th anniversary as we journey through the last four

Jessica Leisure

Kim Lumley - Southwest Airlines Pilots' Association

Lubica Mruskovicova

Tia Ross - Student Member

Debbie Shepard - Tourism Toronto

Allison Talamantez - Marked Ink

Ashlyn Young - Stephen F Austin State University

Did You Know?

*A monthly payment plan is available for its members?
Contact MPI Global Membership for more details!

*If you are laid off or in transition from a job, MPI can
reduce your membership costs. Contact MPI Global
Membership for more details.

* When you refer members to MPI, you receive \$25 in
membership credit off your next renewal for membership?
(YES- it is possible to pay for your membership through
recruitment of new members!)

*MPI offers an Affiliate Memberships to members from
other chapters of MPI so that members can be listed in
the affiliate chapter directory as a member and
can volunteer and attend events with their affiliate
chapter? MPI D/FW Affiliate membership is just
\$100.00 annually! Contact Kelly.Moore@lhg.com if
you have interest in signing up for Affiliate Membership or
Renewing your Affiliate Membership NOW!

Yearning for Learning?

As an MPI Member, you have access to hundreds of hours
of webinars and online educational content which count for
CE credit hours and help you keep up to date with our
ever-changing industry.

Click [HERE](#) to begin your journey for knowledge.

Who is the Lucky Winner?

Earlier this month at PartyFest MPI D/FW partnered with
MPI Global and ran a membership special for new
membership and had a drawing for a Fossil Watch (valued
at \$300) and a \$100 MPI Gift certificate. Those who
signed up at PartyFest and used the special GMID code
were entered into a drawing for each of these.

Our Lucky Winners are:

Congratulations to Erin Flowers of Venue Forty50
who won the Fossil Watch!

Congratulations to Austin McDonald of Square AV
who won our \$100 MPI Gift Certificate!

decades of storied history and honor our colleague's
accomplishments and contributions from throughout the year! A
masquerade sure to be remembered as we reminisce through
the memories created, friends made, and relationships
forged! Don't miss the awards, festivities, and fun! Click [HERE](#)
for more information.

The Adolphus has offered a great nightly rate of \$149.00 for any
attendees that want to take the elevator home after the
festivities. Be sure to bring your swim suits and enjoy the rooftop
pool.

Interested in helping plan any of our chapter events, and
creating a lasting legacy of your own? Email Cori at
cori@conferencesdesigned.com today for more info on how you
can be a part of creating the chapter of the future.

THANKS TO OUR RECENT SPONSORS

We would like to extend a special thank you to our recent

sponsors



QUEST EVENTS



Congratulations to our Spirit Award Winners

MPI D/FW recently recognized two Members with Spirit Awards at our last monthly event.



Congratulations to Sherri Cooke, CMM, CMP of Sherri Cooke and Associates for her contributions to the Finance Team for her efforts in bringing in sponsorships for the chapter.



Congratulations are also in order for Jenny Durham of Fossil for her behind the scenes contributions to the Communications team assisting with social media and newsletter production!

THANK YOU FOR YOUR REFERRAL



Did you know that by referring members you enter yourself into a drawing for \$100 gift certificates from MPI Global? Drawing will be in May 2017!! Don't waste time and refer a member to MPI DFW by giving them your MPI Member number and name for their application! Those who refer members will be entered into two very special drawings!



Changes, Changes, Changes.... help us keep up with your

**HYATT
REGENCY®**

**LAS
Vegas®**

Q2 Charity: Minnie's Food Pantry



Minnie's Food Pantry provides a free supply of emergency groceries once per month per household for residents that do not have enough food because they lack the resources to purchase it. We serve everyone from low income families, single parents, senior citizens, unemployed individuals, disabled veterans, working poor, and anyone else that comes to the pantry that needs emergency food assistance. We serve everyone regardless of their race, color, or religion. Every family receives the red carpet treatment.

Click [HERE](#) to learn how to help!

Collection for April & May: \$25 gift card to WalMart, Target, and Kroger

Cereal, Hamburger Helper meals, and canned meat

JUNE – We will be looking for volunteers to help serve lunch to children. More details to come!

What happens at WEC 2017

new position, new career, contact information by updating your profile here and letting us know about your new position.

Click [here](#) to update your profile.

Click [here](#) to send us a member on the move notice to publish in our newsletter!



Join your MPI D/FW Chapter at WEC 2017 as we meet with other members from around the world. Have you registered yet? Click [HERE](#) for more information.

Not an MPI Member yet? Register for WEC and apply for MPI Membership at the same time!



Copyright © 2016 MPI D/FW All rights reserved.

June 2016 eCurrent

Contact MPI D/FW:

MPI D/FW Chapter

14070 Proton Rd.

Suite 100, LB 9

Dallas, TX 75244-3601

P: (972) 233-9107 x205

F: (972) 490-4219

Michael Quijano, Chapter Administrator

Want to change how you receive these emails?