

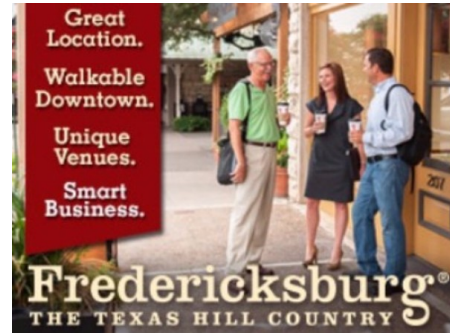


Presidential Ponderings

As the saying goes “time flies when you’re having fun.” So it is with the past 12 months. While there are numerous incredible partners who have contributed to the success of the chapter this term, there are some in particular that I personally would like to acknowledge for being there for me. They include:

- Alison Kieckhafer-Zimmerman and Mekenzie House at The Event Lounge, LLC for creating the Own It logo, and wooden key props
- Bruce Wolpert at Picture This Green Screen photography for Logo/Vision reveal video;
- Those who hosted our Board of Director meetings:
 - Sarah Call at Dex Media Hotel and Conference Center (4 meetings)
 - Kate Nichols at Hilton DFW Lakes
 - Bonnie Larsen at Wyndham Suites Park Central
 - Vivian Morgan at Culinary Arts Catering/Vouv Meeting & Event Space (4 meetings)
- All of the board members who have given so selflessly of their time and talent; and
- The multitude of chapter volunteers who are truly the back bone of this chapter

I also want to say thank you to you the members for



June 2017 Awards of Excellence Gala



Thursday, June 22, 2017

6:00-9:00 P.M.

The Tower Club

1601 Elm Street, Dallas, TX 75201

We Own the Night - Please join us for an elegant evening affair at the Annual Awards Gala on Thursday, June 22nd at the beautiful Tower Club in downtown Dallas! Help us celebrate our chapter's 40th anniversary as we journey through the last four decades of storied history and honor our colleague's accomplishments and contributions from throughout

allowing me to serve as your chapter president. It has certainly been a time of professional and personal growth for me. The board's goal was to leave the chapter better than when the term started. Looking at some of the metrics and results from the recent member satisfaction survey, I can confidently say that goal has been met.

And there's yet another opportunity to celebrate this fabulous chapter at the 40th Anniversary and Awards Gala on June 22nd. We hope you'll join us, and while we celebrate the last 40 years, we also look to the future for our award-winning chapter.



Volunteers Needed

As we restructure the CMP/CMM Study Group, we are searching for Task Force members to assist the chair with education sessions. Please contact Cori Dossett at cori@conferencesdesigned.com for more information.

The Education and Events team is pleased to announce the arrival of our new information page. While in its infancy, the goal of this page is to provide you with all the chapter event information as it becomes available. We hope you enjoy this new resource, and that it assists you in planning your MPI year! We look forward to seeing you soon!

<https://www.mpidfw.org/education-events-committee-information/>

June 2017 New Member Discount

Make crucial connections to people, ideas and marketplaces which can take your career to the next level through our online community and engaging with your local chapter. Join MPI at www.mpiweb.org/join and use code MPISMJUNE before June 30 to receive 10% off your new membership.

Want More Out of Your Membership?

It has been proven that an involved member is a happy

the year! A masquerade sure to be remembered as we reminisce through the memories created, friends made, and relationships forged! Don't miss the awards, festivities, and fun!

Mask Competition: Break out your creativity and show us who you really are.....behind a mask of course! You are invited to make your own or go find the perfect masquerade mask! Best mask of the night will win a 2 night stay at the Hilton Caribe Hotel in San Juan Puerto Rico!

Accommodations: Want to ride the elevator home for the evening? The beautiful Adolphus Hotel is proud to offer a special nightly rate of \$149.00 (excluding taxes)). Reservations must be made by June 8, 2017 to receive this rate. To make your reservation, [CLICK HERE](#).

Click [HERE](#) for more information and to register!

Q2 Charity: Minnie's Food Pantry



Minnie's Food Pantry provides a free supply of emergency groceries once per month per household for residents that do not have enough food because they lack the resources to purchase it. We serve everyone from low income families, single parents, senior citizens, unemployed individuals, disabled veterans, working poor, and anyone else that comes to the pantry that needs emergency food assistance. We serve everyone regardless of their race, color, or religion. Every family receives the red carpet treatment.

Click [HERE](#) to learn how to help!

JUNE – Join us this Saturday, June 17, from 8:00 am until noon as we volunteer at Minnie's Food Pantry located at 3033 W Parker Rd, Ste 116, Plano, TX 75023. Contact Elizabeth Baryshev at ebaryshev@btip.net for the Volunteer application which must be completed prior to Saturday.

Please consider donating our most needed items when you come to volunteer! We are a community-based organization and depend on individuals like you to help us provide meals to the

member. For as little as 10 minutes a month, you can introduce yourself and your business to a greater number of members, leave a legacy of improving your chapter, and just have that good feeling that you were a part of something great! Whether you can give 10 minutes to make a few calls, host a table at a meeting that you are already attending, or rally a committee for a special project, the chapter volunteer opportunities are endless.

[Go here](#) for more information about the various committees and to sign up to volunteer today!



- Thomas Blasucci - Meeting Professionals International
- Deana Bridges - LQ Management
- Tamela Claborn - Society of Petroleum Engineers
- Lori Clark - Premier Transportation Services
- Teresa Ferguson - LQ Management
- Michelle Gaskey - 360 Destination Group
- Blair Green - Circle R Ranch
- Jeff Gusky - Professional Speaker
- Alejandro Marin - Aramark
- Tera Norton - Safran Helicopter Engines USA
- Newt Wright - Choctaw Casino Resort

Did You Know?

*A monthly payment plan is available for its members?
Contact MPI Global Membership for more details!

*If you are laid off or in transition from a job, MPI can reduce your membership costs. Contact MPI Global Membership for more details.

* When you refer members to MPI, you receive \$25 in membership credit off your next renewal for membership? (YES- it is possible to pay for your membership through recruitment of new members!)

*MPI offers an Affiliate Memberships to members from other chapters of MPI so that members can be listed in the affiliate chapter directory as a member and can volunteer and attend events with their affiliate chapter? MPI D/FW Affiliate membership is just \$100.00 annually! Contact Kelly.Moore@hg.com if you have interest in signing up for Affiliate Membership or Renewing your Affiliate Membership NOW!

families we serve!

\$25 gift card from your local grocery store:

- Walmart, Target, Kroger, Market Street, etc.
- Cereal
- Hamburger Helper Meals
- Jelly (no glass jars)
- Gently used or new clothing/small household items for Minnie's Resale Boutique



2017

July 27

MPI D/FW will be partnering with the D/FW Chapter of HSMIAI at the Royal Oaks Country Club on July 27 for a networking lunch and learn.

We will kick off the program with new insights from President Erin Lucia, as she takes the reins and guides the chapter into our next phase. Following Erin's welcome, we will honor YOU – our members – as we recognize our long-time members with their pins.

Our program will consist of a moving keynote and discussion, led by Bill Morse, Community Engagement Director, New Friends New Life. Mr. Morse will inform and lead us in a discussion on sex trafficking in our local community, our industry and show us how luncheon attendees can make a difference. New Friends New Life has been serving the Dallas community for the past 19 years with the mission of restoring and empowering sexually trafficked and sexually exploited women, teens, and their children. By providing access to education, job training, interim financial assistance, mental health counseling, and spiritual support, New Friends New Life helps women and teens overcome backgrounds of abuse, addiction, poverty, and limited opportunities. www.newfriendsnewlife.org

Click [HERE](#) to register!

August - We are taking a Summer Siesta! No program in August.

September 28 - Lunch & Program at Gilley's Dallas

October 26 - Lunch & Program at Renaissance Dallas at Plano Legacy West

November - Happy Hour - More Details to Come!

Yearning for Learning?

As an MPI Member, you have access to hundreds of hours of webinars and online educational content which count for CE credit hours and help you keep up to date with our ever-changing industry.

Click [HERE](#) to begin your journey for knowledge.

THANK YOU FOR YOUR REFERRAL



Did you know that by referring members you will receive a \$25 discount per referral off your membership renewal fee from MPI Global?

MEMBERS ON THE MOVE



Erin Donohue is the new National Sales Manager for Sandestin Golf and Beach Resort! Sandestin Golf and Beach Resort boasts more than seven miles of sugar-white sand beach and bayfront with a 113-slip marina. 1,250 accommodations and 65,000 sq. ft. of meeting space along with 4 golf courses. Contact Erin to book your next meeting/incentive at this beautiful gem of a resort located on the Emerald Coast of Florida:

erindonohue@sandestin.com



Changes, Changes, Changes.... help us keep up with your new position, new career, contact information by updating your profile here and letting us know about your new position.

November - Happy Hour - more Details to Come!

December 14 - Lunch & Program - More Details to Come!

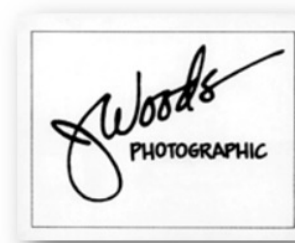
**Do you have that perfect photo?
How about that unique item of memorabilia?**



As you all know, we will be celebrating our chapter's 40th anniversary on Thursday, June 22. In preparation, we are culling through many photos in our archive. And, while we have many, we know that many of our members keep of few of their favorites to themselves. If you have a photo, or two or three, from years gone by, we would like to have a good copy for possible inclusion in the anniversary celebration. We can work with digital or print media. Likewise, if you have some memorabilia you can share, we'd like to hear from you. Please contact Tony Cummins at 214-343-9838 or Tony@TheMeetingDepartment.com.

THANKS TO OUR RECENT SPONSORS

We would like to extend a special thank you to our recent sponsors



Click [here](#) to update your profile.

Click [here](#) to send us a member on the move notice to publish in our newsletter!



Copyright © 2016 MPI D/FW All rights reserved.
June 2016 eCurrent
Contact MPI D/FW:
MPI D/FW Chapter
14070 Proton Rd.
Suite 100, LB 9
Dallas, TX 75244-3601
P: (972) 233-9107 x205
F: (972) 490-4219