



DALLAS/ FORT WORTH CHAPTER



eCURRENT

A Monthly Digital News Communication for MPI D/FW Members



Presidential Ponderings

Meeting Professionals International (MPI) is the largest meeting and event industry association worldwide and our mission is to connect the global meeting and event community to learn, innovate, collaborate and advocate. We have a vision to lead and empower the meeting and event community to change the world. We are focused on people, we carry out our mission with enthusiasm and passion, and we are empowered by trust and integrity. I am proud to be part of an organization that boldly states in its core values that we are responsible for ourselves, and to each other to enrich our communities and sustain our environments and we will strive to develop strong individuals and united teams.

Taking action is truly part of our organizational DNA. Corporate social responsibility (CSR) is therefore an integral part of what MPI stands for. "When you engage being a volunteer on the Leadership Committee for MPI-DFW and Embrace the meaning of giving back to your community, it will energize you in a way you'll step livelier and smile longer!" states Elizabeth Baryshev, our chapter CSR Coordinator. You can read more about the chapter initiatives in this newsletter in the CSR section.

It is therefore with concern that we extend our deepest sympathies to all those impacted by Hurricane Harvey and especially to members of our Houston Area and Gulf States chapters. If you would like to show your support with a donation, there are many national organizations such as the American Red Cross and Salvation Army as well as local food banks, animal rescue groups and more helping with relief efforts. MPI Global and the MPI Houston Area

Chapter have created the MPI Houston Disaster Relief Fund. Donations to the fund will help provide assistance to members of the MPI Houston Area Chapter directly impacted by Hurricane Harvey. The chapter's goal is to collect funds through September 30, 2017, and donate funds soon thereafter to members in need. For more information or to donate, visit their [YouCaring](#) webpage. Our thoughts are with the many impacted by this disaster.

In the coming months, we continue to cover topics that **engage**, help us to **embrace** all member and all the change and that **energize** our careers, industry and our lives. Now, let's go and make a difference!

Erin Lucia

2017-2018 MPI D/FW President

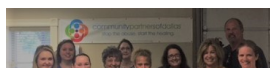
CSR Corner

Engage! Embrace! Energize! By Elizabeth Baryshev

When you Engage as a volunteer on the Leadership Committee for MPI-DFW and Embrace the meaning of giving back to your community, it will Energize you in a way you might not have expected. You'll step livelier and smile longer!

I had the pleasure of having this feeling when a group of 11 of us helped sort and store school supplies at Community Partners of Dallas in August. My 12 year old granddaughter volunteered with us and wanted a picture of her working to put on her online board at school this year. She told me it would help when she applied to college to show she was a good person! So not only did we help with new supplies for children in the Child Protection Service in Dallas, we helped build the character of one of our own in the process! We have one more month to collect supplies for them.

Please join in and help us like one of our members, Rebecca Quinn with Transplace, who took up the challenge with us. Bring School Supplies to Gilley's September 28th: Back Packs, colored pencils, pencil sharpeners, glue sticks, highlighters, markers, folders, pencil pouches, red pens, scissors, construction paper & manila envelopes 9x12



September Chapter Meeting

Please plan to attend our exciting Chapter Meeting this month. Our feature topic is Meeting Industry Quick Draws for AV, RFPs, and F/B: Minimize cost and maximize your attendee's experience! Click the button below to see all details and to register.

WHEN: September 28, 2017 @
12:00 pm

WHERE: Gilley's Dallas
1135 S Lamar St
Dallas, TX 75215
USA

[Click to Register](#)

Member Recruitment Event

Wednesday, September 20, 2017

Location: The Rustic (outside Patio);
3656 Howell Street, Dallas, TX 75204

Time: 5-7pm

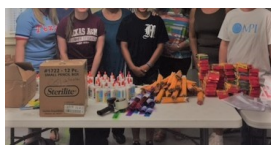
Complimentary beer, wine, soft drinks and heavy appetizers for 2 hours

Ever wonder why MPI is the largest industry organization? Have you considered joining, but just not sure? Join us on September 20th and we'll show you why you should become part of the MPI family!

Event Requirements:

Non-Members are free to attend

Members will be allowed to attend



October thru December we have another opportunity to give back to our community and our Veterans of the military to play Santa to a local family through an organization called Boot Campaign. They support military families year round through programs that directly align with their mission, including financial assistance for mental and physical health recovery. It is through these efforts, and through connections with other members of the Boot Campaign family, that we meet a number of families struggling to meet basic needs. As you can imagine, providing Christmas gifts is often a challenge for families with financial difficulties, which is why the Santa Boots program was developed.

Santa Boots gifts are collected, wrapped and tagged by our Elves, noting the gifts' donors on the tag, and placed in personalized family boxes. Our goal is to include 20 to 30 amazing gifts per family box.

Santa Boots gift packages are a SURPRISE, delivered just days before Christmas, and feature a note of heartfelt gratitude from Boot Campaign and MPI – DFW Chapter!

We will have a tree at our October and November meetings for you to Engage with Santa Boots and provide a gift for our adopted family.

PLEASE stop by the CSR table to check out the needs we can supply for a family we adopt!!



Thank you,
Leadership Committee

Visit this [link](#) to see the opportunities available to every chapter member.



complimentary if they bring

(2) non-members to the event

*** If any member comes without any guests, fee to attend will be \$20.00***

All sponsored by The Rustic!



2017 MPI D/FW KEYS TO SUCCESS SALES BLITZ & RFP EXCHANGE

Sales blitz will be held November 7, 2017, 8:30 am – November 9, 2017, 5:00 pm at the Hyatt Regency DFW International Airport.

Spaces are limited, so register now by clicking [here](#).

Chapter Events

Please click the image to see what's on the horizon for great Chapter events!



Raquel Blackburn, *FBD Partnership, LP*

Julie Blank, *Spear One Productions*

Jennifer Burns, *BEYOND*

Carrie Chutes, *University of Texas at Dallas*

Lisa Collins, *CS Week*

Kristie Estrada, *Meeting Professionals International*

MEMBERS ON THE MOVE

Pam Madewell has recently joined
BRING IT ON! as their Sr. Account
Executive.

Jen Guerrero, *eCubed Events*

Molly Hatley, *Richland College*

Yako Hirano, *Richmond College*

Jay Hough

Yvonne Moreno, *Meeting Professionals
International*

JR Ortiz, *JSAV*

Ashley Perkins, *Inn on the River*

Savannah Reppart, *Warwick Melrose -
Dallas*

Thanh Vo, *Richland College*

Amber Wiens, *CS Week*

Emery Zurchin, *Richland College*



Copyright © 2017 MPI D/FW All rights reserved.

September 2017 eCurrent



DALLAS/FORT WORTH
CHAPTER

MEETING PROFESSIONALS INTERNATIONAL

Contact MPI D/FW:
MPI D/FW Chapter
14070 Proton Rd.
Suite 100, LB 9
Dallas, TX 75244-3601
P: (972) 233-9107 x205
F: (972) 490-4219

Michael Quijano, Chapter Administrator

Want to change how you receive these emails?