



MPI D/FW



Newsletter



A MINUTE WITH SANDRA



As we welcome 2023, we are all preparing for yet another year of growth and change. Michael Dominguez has just shared his thoughts and figures on what will happen next. How will this affect you? Is the constant change overwhelming?

While we may not have control over these changes, we do have control over how we react to it. Will you decide to crumble under pressure, use your new skills to make your life better, stronger, even braver perhaps?

I want to share a story about change that I heard recently and affected me deeply. I hope this enriches your perspective as it has mine:

Nestled inside a rough, linen sack was a seed. It had slumbered in the quiet dark of the barn since last autumn's harvest, so it was startled and not at all pleased when the sack began to move. But after a few minutes it began to enjoy the rhythm of the footsteps of the farmer who was carrying it. It liked the way it slid against the smooth shells of the other seeds in the sack and the way the farmer whistled happily to himself. But nothing lasts forever. Change always comes.

The seed was terrified when it was plucked from the sack, dropped into a hole, and covered in rough earth. At first, the seed panicked to be alone without its fellow seeds, but then it took in the delicious, metallic scent of the dirt and the luxury of a burrow all to itself and it began to relax. But nothing lasts forever. Change always comes.

The sleeping seed awakened to find its shell cracking open. White filaments it didn't know it possessed were slowly but steadily working their way into the earth. The seed felt uncomfortable to be putting forth roots. It hardly recognized itself. But then it felt the strength of the earth's nutrients filling it with energy and it came to admire its changing form. But nothing lasts forever. Change always comes.

No sooner had the seed adjusted to its roots than a green tendril shot through the other side of the seed dragging it into the blinding sunlight of a field on a spring day. The seed had never stretched itself so fast. Indeed, it didn't recognize itself for it was no longer a seed but a plant. But then it learned to enjoy the warm energy seeping into its leaves from the sun and the way the rain cooled it from the outside in.

But of course, you know what I'm going to say next. Nothing lasts forever. Change always comes. It's a fact that's hard for most of us to accept. From our first breath until our last most of us resist and resent change, and yet not only is change inevitable, it's also potentially good for us.

Have a Happy 2023 MPI Family. I look forward to Evolving and Growing with you.

**Sandra Dyeak, CMP
President, MPI D/FW Chapter**









UPCOMING EVENTS

SAVE THE DATE!



EMERGING LEADERS

FEBRUARY. 23RD

EDUCATION DAY

MARCH 23RD

CMP & CMM BREAKFAST

APRIL 27TH

MEMBERSHIP MIXER

MAY 4TH

Annual MPQ DFW

CMP & CMM

RECOGNITION BREAKFAST

**SAVE
THE
DATE!**

THURSDAY, APRIL 27, 2023

7:45AM - 10:00AM

**HILTON DALLAS
LINCOLN CENTRE**

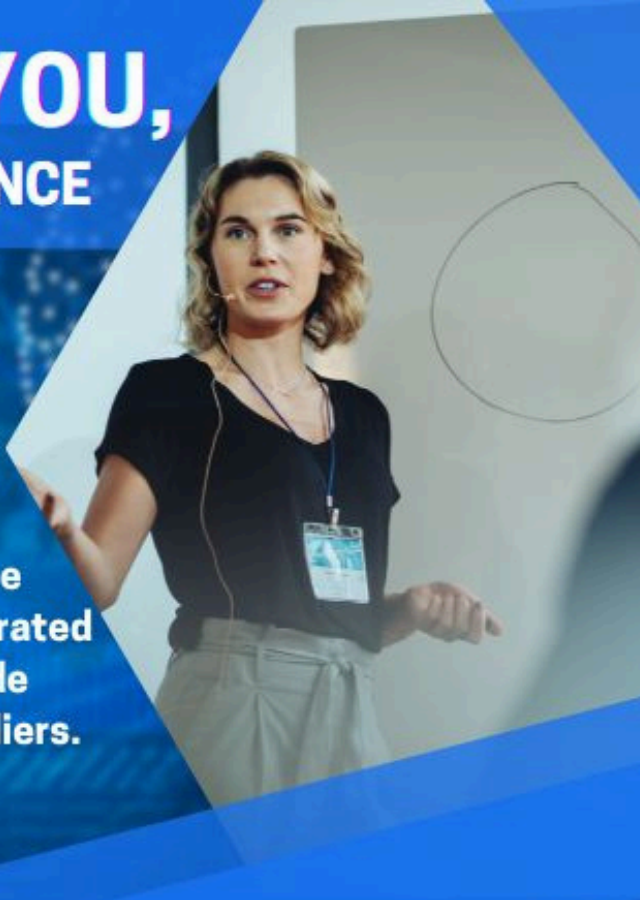
BUILDING A BETTER YOU, AN MPI D/FW EDUCATIONAL EXPERIENCE

MARCH 23, 2023

You don't want to miss MPI D/FW's inaugural Educational Experience, Building A Better You!

Select from a half or full day educational experience consisting of powerful general session content, curated breakouts, networking opportunities and a full trade show featuring a variety of local and national suppliers.

Earn up to SIX (6) hours of CE Credits!



VOLUNTEER

Build relationships. Get the most out of your membership. Give back.

Make it happen.

What does volunteering entail?

What does volunteering entail? It can mean anything you want it to mean. 1 hour a week, 1 hour a month, chairing a committee, just being on a committee, sending a few emails, making a few phone calls.

Here are our needs for the year. Please click the link at the bottom to let us know where your interests and passions lie:

EDUCATION DEPARTMENT

- 3 Chapter Experience Luncheons
- CMP Study Group
- New Education Day

SPECIAL EVENTS

- Golf Tournament
- Holiday Party
- CMM/CMP Breakfast
- Gala

MEMBERSHIP

- Membership Recruitment
- Table Posts
- New Member Orientation
- Registration Tables
- Party Fest

SPONSORSHIP & FINANCE

- Venue Procurement
- Sponsorships
- No Booth Trade Show
- JPA Scholarships

LEADERSHIP

- Mentor Program
- CSR
- Career Cafe
- Emerging Leaders Event
- Diversity, Equity, & Inclusion Committee

MARKETING & COMMUNICATIONS

- Social Media
- Newsletter
- Email Communications
- Member Directory

Your MPI D/FW Board wants to create an incredible, worthwhile experience for our membership that supports everyone throughout this time of change. Let's all work together to continue helping all of our members EVOLVE AND GROW TOGETHER.

Click Here to Find Out More!



WATCH YOUR INBOX!

***THE NEW MPI D/FW 2023-2024
BOARD OF DIRECTORS SLATE
WILL BE ANNOUNCED SOON!
KEEP AN EYE OUT!***



WORLD ECONOMIC FORUM

WEF **23**

JUNE 13-15

REMINDER



Start thinking about who you would like to nominate for the upcoming "Awards of Excellence" and the "Colleen Rickenbacker Leadership Award".



MPI

**DALLAS/
FORT WORTH**
CHAPTER

Sponsorship Opportunities

2022-2023

Opportunities to Engage

2022-2023 Calendar of Events

Program	Date	Venue	Sponsor(s)
August Chapter Experience	Thursday 8/25/2022	in Deep Elm	The Smart Nerd, Taste by Chef Kevin, Top Talent Rentals and Staffing, Shag Carpet, in Deep Ellum, Virtual by Vario, Beyond, Harmland Visions, Jason Esquire
Annual Golf Par-Tee	Monday 9/19/2022	TopGolf	TopGolf
October Chapter Experience/No Booth Tradeshow	Thursday 10/20/2022	Sheraton Dallas Worth Downtown	Kalahari Resorts & Conventions, Encore, Harmland Visions, VisitDallas
MPI D/FW Membership Mixer	Thursday 11/3/2022	Electric Shuffle Dallas	Electric Shuffle Dallas, VisitDallas, Kalahari Resorts & Conventions, Visit Reno Tahoe, Kalahari Resorts & Conventions, City of Jefferson
December Holiday Experience	Thursday 12/15/2022	Dallas Arboretum	Visit Reno Tahoe, Dallas Arboretum, Wolfgang Puck Catering
January Chapter Experience	Thursday 1/19/2023	Sponsorship Available	Sponsorship Available
Emerging Leaders	Thursday 2/23/2023	Vouv Meeting & Event Space	Vouv Meeting & Event Space, Additional Sponsorships Available
MPI D/FW Education Day & Supplier Showcase	Thursday 3/23/2023	Sponsorship Available	More details to come
April CMM/CMP Breakfast	Thursday 4/27/2023	Sponsorship Available	Sponsorship Available
Volunteer and Membership Appreciation	May 2023	Sponsorship Available	Sponsorship Available
MPI D/FW Annual Awards Gala Dinner	Thursday 6/22/2023	Sponsorship Available	Sponsorship Available

MPI D/FW Sponsorship Benefits

Sponsor Level of Overall Donations

	Platinum	Gold	Silver	Bronze
Investment Amount*	\$10,000+	\$5,000+	\$2,500+	\$1,000+
Cash	\$20,000+	\$10,000+	\$5,000+	\$2,000+
In-Kind				
Company logo projected on screen at sponsored event (if applicable)	●	●	●	●
One complimentary registration to sponsored event	●	●	●	●
Recognition in event promotions	●	●	●	●
Stage Recognition at sponsored event	●	●	●	●
Spotlight in our digital promotions leading up to the meeting w/ logo link (\$500 value)	●	●	●	●
Featured on Sponsor List on MPI D/FW Chapter website w/link at appropriate level	Logo w/ existing	Logo w/ existing	Logo	Logo
Tabletop exhibit during reception / registration at event to display materials	●	●	●	
Company materials or gifts available to attendees at the sponsored event	●	●	●	
Banner ad in one issue of newsletter (within 60-90 days of sponsored event, 800 x 100px)	●	●	●	
Social Media spotlight post on Facebook or Instagram or Twitter (Square Image)	●	●		
Podium Time at Sponsored Event (up to 3 min)	●	●		
(1) Registration to our Annual No Booth Tradeshow (bag only/based on availability)	●	●		
Banner Ad on the MPI D/FW Chapter Website (1 month static and 6 months rotating \$2,300 Value)	●	●		
Recognition of Sponsorship Level in Annual Directory	●	●		
Opportunity to show promotional video (3-4 min)	●			

Thank you for supporting the MPI D/FW Chapter



Ready to commit? Please click the link below to fill out our sponsorship form for tracking and fulfillment purposes.

Have questions? Reach out to Paula Bowman, Vice President of Finance & Sponsorship at (817) 704-7594 or vpfinance@mpidfw.org

Office of the President -

president@mpidfw.org

president-elect@mpidfw.org

ImmedPastPres@mpidfw.org

Education and Events - vpedevents@mpidfw.org

Membership - vpmembership@mpidfw.org

Special Events - vpsepcialevents@mpidfw.org

Communications/Marketing - vpcommunications@mpidfw.org

Leadership - vpleadership@mpidfw.org



UPCOMING CSR OF THE QUARTER CAFÉ MOMENTUM



CAFÉ
MOMENTUM

Providing transformative experiences to justice involved youth ages 15-19 through paid internships helping them meet their full potential.

Stay tuned for engagement opportunities this quarter!

Learn more at <https://cafemomentum.org/>



Thank you!

Wrapping Party for Santa Boots



WHEN THE WORK IS DONE

enjoy the views



Fredericksburg[®]
THE TEXAS HILL COUNTRY

[LEARN MORE ABOUT OUR SERVICES »](#)

UNIQUE VENUES & PLACES TO STAY | FUN ACTIVITIES
CENTRALLY LOCATED IN TEXAS WINE COUNTRY



UNIQUE OPTIONS FOR
UNPARALLELED MEETINGS

 **Kalahari.**
RESORTS &
CONVENTIONS

LEARN
MORE





VISIT
DALLAS®

A thick black line forms a stylized, continuous shape that resembles a large 'C' or a loop. It starts at the top, curves down and left, then loops back up and right, passing through the middle of the word 'DALLAS'. The line ends at the bottom, curving back up and left to complete the loop.



RenoTahoe®

Visit RenoTahoe.com



TOP PERFORMING



2 0 2 2 C H A P T E R A W A R D

FOLLOW US!



LINKEDIN

[/company/mpi-dfw-chapter](#)



INSTAGRAM

[/mpi_dfw](#)



FACEBOOK

[/MPIDallasFtWorth](#)



TWITTER

[/mpi_dfw](#)

MPI D/FW CHAPTER

14070 Proton Road, Suite 100
Dallas TX 75244

E | chapadmin@mpidfw.org
P | 972-233-9107 ext 201
F | 972-490-4219



END



GREAT EVENTS HAPPEN WITH GREAT SPONSORS

Our Volunteer Appreciation and CMP/CMM Breakfast were fantastic events that we hope you didn't miss. A huge THANK YOU goes out to all of our sponsors who helped us take these events to the next level!
You rock!



JOIN OUR BOARD!

JOINING THE BOARD IS AN INCREDIBLE LEARNING OPPORTUNITY TO GAIN LEADERSHIP SKILLS, BUILD RELATIONSHIPS WITH THE FOREMOST LEADERS IN THE INDUSTRY, AND GIVE BACK TO THE COMMUNITY AND FAMILY.

WE ARE IN NEED OF FILLING THE FOLLOWING BOARD POSITIONS

DIRECTOR OF FINANCE & SPONSORSHIPS

This position works closely with the VP of Finance, Paola Bowman, CMP, CMM and assists with the procurement of sponsors and fulfillment of their benefits. They also assist in the production of 2 silent auctions benefitting our JPA Scholarship Foundation.

DIRECTOR OF

The position assists with the procurement of the Emerging Leaders, Career Advancement, and Volunteer Awards Event.

DIRECTOR OF PROCUREMENT

This position works closely with the VP of Finance & Sponsorships, Paola Bowman, CMP, CMM and assists with the procurement of venues needed to produce the chapter's events. They also assist in the production of 2 silent auctions benefitting our JPA Scholarship Foundation.

PLEASE EMAIL SANDRA DYEAK, CMP FOR MORE INFORMATION IF YOU ARE INTERESTED IN JOINING OUR FANTASTIC TEAM:

PRESENCE@CMPIDFW.ORG



GLOBAL ANNOUNCEMENTS

EDUCATION



Earn your HMCC at Pharma Forum, thanks to Destination Canada.

Are you a planner who wants to earn their Healthcare Meeting Compliance Certificate (HMCC)? You can do that with a complimentary tuition, thanks to Destination Canada! Attend Pharma Forum September 11-14, 2022 for free, and you can also claim complimentary tuition to the HMCC class that will be live at Pharma Forum. [Click here](#) to learn more about Pharma Forum, and [click here](#) to claim your complimentary HMCC tuition.



GLOBAL ANNOUNCEMENTS

EDUCATION



COMPLIMENTARY COURSE TUITION AVAILABLE

Thanks to generous sponsors, including Marriott and Visit Dallas, we are able to offer complimentary tuition to two of our certificate courses: Inclusive Event Strategist and Event Wellness Design. [Click here](#) to sign up for free tuition. Hurry, these complimentary seats will go fast. Reserve yours today!

JOIN THE BOARD!

JOINING THE BOARD OF MPI D/FW IS AN INCREDIBLY FULFILLING OPPORTUNITY TO GAIN LEADERSHIP SKILLS, BUILD RELATIONSHIPS WITH SOME OF THE FOREMOST LEADERS IN THE INDUSTRY, AND GIVE BACK TO YOUR MPI FAMILY.

WE ARE IN NEED OF FILLING THE FOLLOWING BOARD POSITIONS

DIRECTOR OF FINANCE & SPONSORSHIPS

This position works closely with the VP of Finance, Paola Bowman, CMP, CMM and assists with the procurement of sponsors and fulfillment of their benefits. They also assist in the production of 2 silent auctions benefitting our JPA Scholarship Foundation.

DIRECTOR OF LEADERSHIP

This position works closely with the VP of Leadership, Charlene Edwards and assists with the planning of the Mentor Program, Career Cafes, CSRs, Emerging Leaders Event, and Volunteer Appreciation Event.

DIRECTOR OF PROCUREMENT

This position works closely with the VP of Finance & Sponsorships, Paola Bowman, CMP, CMM and assists with the procurement of venues needed to produce the chapter's events. They also assist in the production of 2 silent auctions benefitting our JPA Scholarship Foundation.

PLEASE EMAIL SANDRA DYEAK, CMP FOR MORE INFORMATION IF YOU ARE INTERESTED IN JOINING OUR FANTASTIC TEAM:

PRESIDENT@MPIDFW.ORG

A MINUTE WITH SANDRA



- “ —

“Being on the board was life-changing. Yes we worked hard, but the friendships that we built were worth it. .”

— ” -

When I first joined MPI, I knew 1 person in our chapter. I was nervous about attending my first event, but I sucked it up and made myself go. I walked right into the New Member Orientation with Trent Culler and immediately felt more comfortable as he taught us about the chapter. He also made sure that we all walked out of that room with 10 new friends – which really helped me make my way through the networking reception. In the ballroom I sat down with a table of strangers and was immediately put at ease by our table host, Peg Wolschon. As she led the table conversation and business card exchange, I gained another 7 new friends in MPI.

JOIN THE BOARD!

JOINING THE BOARD OF MPI D/FW IS AN INCREDIBLY FULFILLING OPPORTUNITY TO GAIN LEADERSHIP SKILLS, BUILD RELATIONSHIPS WITH SOME OF THE FOREMOST LEADERS IN THE INDUSTRY, AND GIVE BACK TO YOUR MPI FAMILY.

WE ARE IN NEED OF FILLING THE FOLLOWING BOARD POSITIONS

DIRECTOR OF FINANCE & SPONSORSHIPS

This position works closely with the VP of Finance, Paola Bowman, CMP, CMM and assists with the procurement of sponsors and fulfillment of their benefits. They also assist in the production of 2 silent auctions benefitting our JPA Scholarship Foundation.

DIRECTOR OF LEADERSHIP

This position works closely with the VP of Leadership, Charlene Edwards and assists with the planning of the Mentor Program, Career Cafes, CSRs, Emerging Leaders Event, and Volunteer Appreciation Event.

DIRECTOR OF PROCUREMENT

This position works closely with the VP of Finance & Sponsorships, Paola Bowman, CMP, CMM and assists with the procurement of venues needed to produce the chapter's events. They also assist in the production of 2 silent auctions benefitting our JPA Scholarship Foundation.

PLEASE EMAIL SANDRA DYEAK, CMP FOR MORE INFORMATION IF YOU ARE INTERESTED IN JOINING OUR FANTASTIC TEAM:

PRESIDENT@MPIDFW.ORG



MPI D/FW Newsletter



GLOBAL ANNOUNCEMENTS

WE ARE
HIRING
NOW!



EDUCATION DEPARTMENT

- 3 CHAPTER EXPERIENCE LUNCHEONS
- CMP STUDY GROUP
- NEW EDUCATION DAY

SPECIAL EVENTS

- GOLF TOURNAMENT
- HOLIDAY PARTY
- CMM/CMP BREAKFAST
- GALA

MEMBERSHIP

- MEMBERSHIP RECRUITMENT
- PARTY FEST
- NEW MEMBER ORIENTATION
- REGISTRATION TABLES
- TABLE HOSTS

LEADERSHIP

- MENTOR PROGRAM
- CSR
- CAREER CAFE
- EMERGING LEADERS EVENT
- DIVERSITY, EQUITY, & INCLUSION COMMITTEE

SPONSORSHIP & FINANCE

- VENUE PROCUREMENT
- SPONSORSHIPS
- NO BOOTH TRADESHOW
- JPA SCHOLARSHIPS

MARKETING & COMMUNICATIONS

- SOCIAL MEDIA
- NEWSLETTER
- EMAIL COMMUNICATIONS
- MEMBER DIRECTORY

OUR COMMITTEES NEED VOLUNTEERS

SPEED DATING FOR JULY EVENT

Are you looking to help shape the future of your MPI D/FW chapter? We're looking for committee volunteers to assist in keeping MPI D/FW as one of the top performing MPI chapters.

INFORMATION

There are a wide variety of opportunities where you love face-to-face communication. Do you have a knack for helping others succeed? Are you a creative at heart? Do you enjoy educating and mentoring? Perhaps you are a lover of logistics and planning.

Whatever your skills WE NEED YOU!

[CLICK HERE](#) to see which committee best fits your skills.



CALL FOR COMMITTEES!

UPCOMING EVENTS

SAVE THE DATE!



**KEEP AN EYE ON OUR MPI D/FW
FACEBOOK PAGE, AS WELL AS YOUR
INBOX, FOR MORE DETAILS COMING
SOON!**

Call for **Host Venues**

Do you have a venue you would like to showcase?

MPI D/FW has sponsorship opportunities available in 2021-2022 and beyond, for you to showcase your venue! Attendees range from 50 to 200 at events of meeting professionals. If you are interested, reach out to **Paola Bowman**, Director of Procurement at DirProcurement@mpidfw.org / [817-917-7763](tel:817-917-7763).

Thank you for your continued support of MPI D/FW!





FRADEL AND SPIES

DISCOVER YOUR EVENTS

EVENT PLANNER & ORGANIZER PRESENTATION

Presentations are communication tools that can be used as lectures, speeches, reports, and more.



UPCOMING EVENTS

CLICK TO VISIT OUR FACEBOOK EVENT PAGE FOR UP-TO-DATE INFO

SAVE
the
DATE

—



Each year the MPI RISE Awards honor chapters as well as individual members for their excellence in various categories.

This year we were honored as a chapter finalist for Innovative Educational Programming! Likewise, long-standing members Paige Mejia, FPO and Greg Elam were recognized for their contribution to MPI and our chapter as finalists for Meeting Industry Leadership.

This award honors those rare individuals who by visionary hard work and creative insight have positively changed the global meeting and event industry. I think we can agree they both have done that and more!

GREG ELAM



Greg Elam was announced the winner of the Meeting Industry Leadership RISE Award at the virtual Global Meetings Industry Day on April 9, 2021. Congratulations Greg!

Greg served as President of the MPI Dallas- Ft Worth Chapter from 1980 to 1981 and was named International Meeting Planner of the Year by MPI in 1987. Over the years, Greg has been instrumental in the evolution of your MPI D/FW Chapter and has paved the way for our continued growth and improvement.

Thank you for all you do, Greg!