

MPI

MEETING PROFESSIONALS INTERNATIONAL®

Committed to Educational Leadership

CURRENT

Meeting Professionals International

July 1997

Dallas/Fort Worth Chapter

Novelli, Pynes Named Supplier, Planner of the Year MPI D/FW Applauds Leadership and 'Celebrates the Vision' at Annual Awards Gala

Outgoing and incoming presidents of the MPI D/FW Chapter were doubly honored at the annual Awards Gala last month when they were named Supplier and Planner of the year.

President (1996-97) Mary Lynn Novelli, CMP, (Sterling Hotels and Resorts) was named D/FW Chapter Supplier of the Year; 1997-98 President Gregory Pynes (Hand & Associates Communications) was honored as D/FW Chapter Planner of the Year.

Novelli and Pynes were among a host of D/FW Chapter members honored at the presentation. See page 10 for more awards recipients.



Mary Lynn Novelli, CMP
Sterling Hotels & Resorts
D/FW Chapter Supplier of the Year



Gregory Pynes
Hand & Associates Communications
D/FW Chapter Planner of the Year

President's Message

President Pynes Opens a New Window: 'Involvement Through Service'

By Gregory Pynes
Hand & Associates Communications
D/FW Chapter President

My first impression of the MPI Dallas/Fort Worth Chapter that summer day back in 1990 was one of awe.

Gathered at the Tower Club was a collection of intense individuals engaged in "networking"—that human activity of working a room with a pitch and tenor I had not yet experienced in my youthful

professional career.

Networking. Connecting with people. I was hooked.

This was a grand group whose energy and spirit captivated me. I wanted to get *involved*—in an industry association that could assist me in understanding the path I was thrust into by fate.

Like many of you, I struggled that first year to "break into" the group—that perceived clique that resembled the huddle

continued on page 3

In this issue

July Meeting Details	5
"Grapevine" News	7
Education News	8
Finance Report	9
Annual Gala Winners, Honorees	10
1997-98 Board of Directors	13
"New Kids on the Block"	14
Texas Education Conference	15

CURRENT MPI

MEETING PROFESSIONALS INTERNATIONAL*

Committed to Educational Leadership

Dallas/Fort Worth Chapter
4020 McEwen • Suite 105
Dallas Texas 75244
972-233-9107x203 • FAX 972-490-4219
74742.1725@compuserve.com

Editor
Gracie Hatfield Hilton
The Write Stuff
metro 817-467-5449 • FAX: 817-467-7439
gracie@eaze.net

Vice President Public Relations/Marketing
Marsha Singer
The Dallas Directory
214.823.4370

**Director of Chapter Communications
and Advertising**
Kristi Carter
J&S Audio Visual, Inc.
972-241-5444 • 972-247-2590

Photographer & Videographer
VISTA Photographic & Video Group
972-380-0985 • FAX: 972-267-9758

Regular Contributors and Writers
Paige Braun
The Conventioneer • 214-691-8073
Tony Cummins
Adam's Mark Hotel • 214-922-8000
Steven Foster
Gray Line of DFW Coach USA • 214-630-1000
M.T. Gnad
A Bunch of Grapes • 972-866-8640
Pat McCain, CMP
Krisam Group • 972-458-8692
Gregory Pynes
Hand & Associates • 972.248.4889
Gerry Reid
Gerry Reid Speaking • 972-593-4487
O.D. O'Donnell
Nightlife Talent & Mgt. Agency • 214-691-4417
Cindy Martinez, CMP
The Stoneleigh Hotel • 214-871-7111
Diane Smith, CMP
Alcon Labs • 817-551-8077

MISSION STATEMENT

Meeting Professionals International is the pivotal force in positioning meetings as a primary communication vehicle and a critical component of an organization's success. Meeting Professionals International leads the meetings industry by serving the diverse needs of all people with a direct interest in the outcome of meetings, educating and preparing members for both their changing roles and validating relevant knowledge and skills, as well as demonstrating a commitment to excellence in meetings.

The *CURRENT* is published 12 times yearly for the D/FW Chapter of Meeting Professionals International, the industry's leading educational and networking resource in meetings management. Statements of fact and opinion are the responsibility of individual writers and do not imply collective opinion of the officers or members of MPI.

1997 Chapter Meetings

July 24, Thursday
July Chapter Meeting
Omni Dallas Park West
11:30 a.m.

August 28, Thursday
Monthly Chapter Meeting

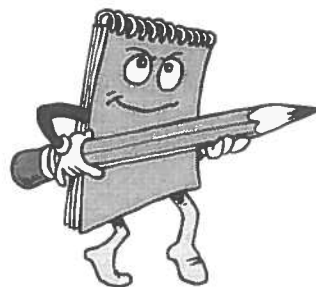
September 25, Thursday
Monthly Chapter Meeting

October 23, Thursday
Monthly Chapter Meeting

November 20, Thursday
Monthly Chapter Meeting

December 18, Thursday
Monthly Chapter Meeting

CURRENT Deadlines



ISSUE

August
inserts due Aug. 9

September
inserts due Sept. 10

October
inserts due Oct. 8

DEADLINE

July 18, Friday

August 15, Friday

Sept. 19, Friday

MPI

MEETING PROFESSIONALS INTERNATIONAL*

Committed to Educational Leadership

MPI International Headquarters
4455 LBJ Freeway • Suite 1200
Dallas, Texas 75244-5903
972-702-3000
FAX: 972-702-3070
<http://www.mpiweb.org>

Chapter Meeting Reservation & Attendance Policy

Registration fees will be collected at the door; advance payments are not accepted. If paying by check, please have check completed before approaching registration table. Reservations must be made by RSVP deadline for advance registration fee to apply. Late reservations and walk-ins will be accepted on a SPACE AVAILABLE basis. Cancellations must be made by the RSVP deadline. **No-shows will be billed.** Members are responsible for "no-show" charges for their guests. Guests are limited to attending three meetings per year (spouses are an exception).

Alcohol Policy MPI D/FW Chapter

The D/FW Chapter of MPI recognizes and supports the many legitimate uses of alcoholic beverages in the process of conducting our business and social activities. As a chapter, we also recognize that the use and consumption of alcohol at our functions carries with it the requirement to consume those beverages responsibly and in keeping with our professional code of ethics and conduct. We strongly oppose the abuse and misuse of alcohol. We further support those efforts that seek to inform our members of the issues concerning alcohol use and in offering assistance to any members seeking further information and/or assistance either personally or professionally.

President's Message

continued from page 1

in a football game you try to wriggle into.

I knew that to benefit from the membership of any association requires more than just being a "card carrying" individual who shows up for the monthly meeting. I knew I needed to get *involved*.

My strategy: I went around and told anyone and everyone that I wanted to be involved. I even told the president.

At the end of a year I was still running around the huddle trying to squeeze in.

It was obvious: *talking is not doing*.

Then one day, on a routine errand, I ran into a familiar face. After a friendly greeting Paige Braun (Dallas Conventioneer) said, "Hey! Are you on any MPI committees?"

"No, but I want to be!" was my reply.

She told me about the Governmental Affairs Committee, a new venture for MPI. It was a project that piqued my interest.

This time, I didn't sit around and wait for someone to call. I took the initiative, found out where and when the committee met, showed up and *volunteered* to *serve*.

Thus began my involvement with the D/FW Chapter.

Involvement through Service.

I chose that theme to undergird my leadership—and to illustrate my commitment to foster opportunities for *you* to get *involved*, to *serve*.

I am blessed to be serving with a collection of dedicated individuals—your elected board of directors—who have made a commitment to service—a commitment to continue to lead this great chapter, to foster the development of new leaders by *Involvement through Service*.

Our pledge is to work together to suggest service opportunities that will make a positive difference for yourself, your employer, your professional family, as well as your chapter.

Do! Be! Join a committee! Brainstorm! Create something new!

This is the spirit that makes MPI D/FW the four-time winner of the coveted "Chapter of the Year Award."

Join your energy with the collective Super Nova known as MPI Dallas/ Fort Worth. *Involvement through Service* means results in 1997-98 and beyond!

—GP

MPI

MEETING PROFESSIONALS INTERNATIONAL[®]

Committed to Educational Leadership

Meeting Professionals International is the world's largest association of meetings professionals with more than 14,500 members in 51 countries and 58 chapters and three clubs. MPI serves as the pivotal force in positioning meetings as a primary communication vehicle and a critical component of an organization's success. MPI leads the meeting industry by serving the diverse needs of members and nonmembers alike through its commitment to quality education, continuous improvement and excellence in meetings while upholding high ethical standards.

D/FW Chapter President

Gregory Pynes
Hand & Associates Communications
972.248.4889

President-Elect

Colleen A. Rickenbacher, CMP
Dallas Convention & Visitors Bureau
214.571.1040

Immediate Past President

Mary Lynn Novelli, CMP
Sterling Hotels and Resorts
972.402.4875

Vice President/Administration

Susie Carr, CMP
Annuity Board of SBC
214.720.4658

Vice President/Education

Peg Wolschon, CTC
Kerrville Bus Company Coach USA
972.263.0294

Vice President/Finance

Melissa Parks, CMP
H.D. Vest Financial Services, Inc.
972.863.6160

Vice President/Membership

Delinda Dudley
Malibu Speed Zone
972.247.7223

Vice President/Programs

Steven Foster
Gray Line of Dallas/Fort Worth Coach USA
214.630.1000

Vice President/Public Relations/Marketing

Marsha Singer
The Dallas Directory
214.823.4370

Board of Directors Planners

Cheryl Beasley, CMP
SABRE Travel Information Network
817.963.2025

Dana Nickerson, CMP
Square One Productions
214.343.8067

Tamara Quilty, CMP
Sprint
972.405.5177

Linda Vest, CMP
State Farm Insurance
972.732.5970

Suppliers

Toni Cummins
Adam's Mark Hotel Dallas
214.922.0316

Betty Garrett, CMP
Garrett Speakers International
972.513.0054

Kristi Carter
J & S Audio Visual, Inc.
972.241.5444

Alainna Webb, CMP
The Carey Companies
214.748.0448

1997-98 MPI D/FW PARTNERS



MPI D/FW Partners are members whose generosity in contributing goods and services makes it possible for the D/FW Chapter to deliver exceptional programs and educational opportunities. The membership and Board of Directors of the four-time winner of the coveted "Chapter of the Year" award salute the following members for their support in 1997-98.

AVW Audio Visual
Gale Sliger Productions
Appointments Promotional Advertising
Adam's Mark Hotel Dallas
Freeman Decorating
Gray Line of Dallas/Fort Worth
Nightlife Talent & Management Agency
VISTA Photographic & Video Group
Delta Air Lines

For more information about MPI Partnership, call
Colleen Rickenbacher (Dallas Convention & Visitors Bureau) 214.571.1040



STAR of the Month



"Star of the Month" is a recognition program honoring chapter members for involvement in committees and special programs. All Stars of the Month are eligible for a special drawing for two educational scholarship awards to attend the MPI International Conference or other MPI educational opportunities.



Susan Conley
Independent
Planner

Susan Conley (Independent Planner) has been a member of MPI since June 1992. As chair of the Registration Committee, she does a fantastic job overseeing smooth registrations at MPI monthly meetings. She has also been an active committee member for The Kids Charity Ball.



To nominate a Star of the Month, call Paige Braun (Dallas Conventioneer), 214-691-8073.

MPI D/FW Retrospective Video

Eleven minutes of down-the-years shots—with terrific background sounds of the 70s, 80s and 90s—a fast-paced, entertaining chronicle of MPI D/FW's 20-year history.

Copies are \$10 each.



Call
Debbie Holman
at
VISTA
Photographic
&
Video
Group
972.380.0985

New Member Happy Hour



Planet Hollywood Dallas West End

August 7
5:30-7:30 p.m.

Enjoy complimentary
appetizers and beverages,
compliments of Planet Hollywood.

Questions?
Call Lynn Lewis (Ernst & Young), 214-665-5785.

Turner Visits Gemelli Chapter Members

By Diane Smith, CMP
Alcon Labs, Inc.

The MPI D/FW Chapter's Dorrit Turner (Yellow Rose Touring and Special Events), was in Italy recently and had the opportunity to meet with several Gemelli Chapter members.



Dorrit Turner
Yellow Rose Touring
& Special Events

MPI Italia is MPI D/FW's Gemelli or "twin chapter," a partnership established in 1993.

In Naples, Turner visited with Maria Rosaria Migliarotti (CNC International SNC), who was busy planning the annual MPI Italia Chapter meeting—the first major event of its kind held in Southern Italy.

In Geneva, at the European Incentive Show (EIBTM), Turner visited with MPI Italia President-Elect Rudolfo Musco, CMP (Rudolfo Musco & Associati SRL). Dr. Musco said the Italia members were discussing the possibility of hosting a return trip to Italy for D/FW Chapter members in 1998.

Also at EIBTM, Turner visited with Nadia Colaiuda (Rendezvous Italiano), Paolo Missiaja (Servizi Internazionali) and Lucio Alessandrini (Italcon SRL), who send their best wishes to all members of the D/FW Chapter.

During her travels, Turner also met with Dr. Vito Marzo, (Centro Internazionale Congressi s.r.l.) who recently opened a new office in Brussels in addition to his Bari location on the Southern coast of Italy.

As the Gemelli Committee and D/FW Chapter board move forward to determine the future focus of this important international effort, we'll continue to bring you news from our MPI Italia friends and colleagues.

For more information on the opportunities offered through participation on the Gemelli Committee, contact Bobby Bulger (Bobby Bulger Travel Concepts), 214.341.5876.

July Meeting Highlights

'MPI TV' Premieres 'Involvement Through Service'

By Keith W. Hickman
The Sixth Floor Museum

Want to be more involved in MPI, but need some direction? Don't miss the July MPI D/FW Chapter luncheon meeting and the debut of "MPI TV."

Register now to ensure a seat in the studio audience at the Omni Dallas Hotel Park West. This "season premiere" kicks off the 1997-98 chapter year.

What were you wearing in 1977?

In the spirit of celebrating the D/FW Chapter's beginning 20 years ago, attendees are invited to retro-dress in 70s-style gear. If your closet still has some double-knit polyester bell bottoms, haul 'em out!

"Head Shots" Opportunity

Just be sure your 70s look is "below the neck," so you can take advantage of a special feature this month: Jerry Hughes (Jerry Hughes Photography) will be on hand to snap professional "head shots." For more information, see page 6.

Service Opportunities

MPI TV will feature an outstanding array of guests who will detail numerous ways chapter members can contribute to MPI and ensure personal career growth.

President Gregory Pynes (Hand & Associates Communications) will host this fast-paced, informative show. A long-time regular on the MPI "talk" circuit, Pynes is excited about his new starring role and launching the "Involvement Through Service" theme.

Heading the guest list will be Mary Lynn Novelli, CMP (Sterling Hotels & Resorts), in the role of immediate past president; and Colleen Rickenbacher, CMP (Dallas CVB), in the role of president-elect.

Tips on opportunities available in the public relations and marketing arenas will be highlighted by V.P. Public Relations and Marketing Marsha Singer (The Dallas Directory, Inc.).

V.P. Administration Susie Carr (Annuity Board of the Southern Baptist Convention) will address the skills and talents needed to assist in all the administra-

PORTRAIT SESSION BY
JERRY HUGHES
PHOTOGRAPHY
11 a.m.-12 n
1-2 p.m.
\$10



MPI

MEETING PROFESSIONALS INTERNATIONAL®

Committed to Educational Leadership

July D/FW Chapter Meeting

"MPI TV" Premieres "Involvement Through Service"

Thursday, July 24

*The Omni Dallas Park West Hotel
1590 LBJ Freeway (at Luna Road)
Dallas, Texas 75234
972.869.4300*

11:00 a.m. Orientation for New Members & Guests—Check Reader Board

11:30 a.m. Registration and Reception—Park West Ballroom Foyer

12:00 p.m. Lunch and Program—Park West Ballroom

—Complimentary Self Parking—

*R.S.V.P. to Joe
by noon, Tuesday, July 22
•phone 972-233-9107 x203
•FAX 972-490-4219 (see fax insert)
•74742.1725@compuserve.com*

*Advance Registration \$24
Late Registration \$32
Guest Registration \$27*

tive areas involved in keeping the D/FW Chapter number one.

Because MPI is committed to educational excellence, V.P. Education Peg Wolschon (Kerrville Bus Company Coach USA) will discuss service opportunities on the Education Committee.

Likewise, a successful chapter must be able to manage its finances. V.P. Finance Melissa Parks, CMP (HD Vest Financial Services) will join the cast to let members know how they can contribute to this important area.

V.P. Membership Delinda Dudley (Malibu Speed Zone) knows that an active and viable chapter is always on the grow; she will enlist your assistance in this endeavor.

V.P. Programs Steven Foster (Gray

continued on page 6

July Host Facility

The Omni Dallas Park West Hotel

The Omni Park Central Hotel is a four-diamond luxury hotel. With 337 deluxe guest rooms and suites, including two concierge floors, the hotel offers more than 17,000 square feet of flexible meeting and banquet space.

The impressive and popular Texas Learning Center is a 300-seat tiered amphitheater complete with ergonomically designed chairs, permanent stage and built in audiovisual.

Strategically situated in the heart of the Park West Business Development next to Las Colinas, the Omni Park Central is just 10 minutes from DFW Airport, 15 minutes from downtown Dallas, and convenient to Galleria shopping and Texas Stadium.

Which photo presents a professional image?

MPI D/FW Member Benefit: Professional "Head Shots" for only \$10



Lack of professional lighting causes harsh shadows.



Professional lighting means a quality photo.

PORTRAIT SESSION

**MPI D/FW
Chapter Meeting**
July 24
11 a.m.-12 noon
1-2 p.m.

Don't miss the "Quick Mini Portrait Session" at the July 24 chapter meeting!

MPI D/FW Chapter Member **Jerry Hughes** (*Jerry Hughes Photography, Inc.*) will be on location—with studio lighting and backgrounds—to create professional portraits perfect for press releases, resumes and other professional needs (including a file copy for the *CURRENT*, the monthly chapter newsletter).

For only \$10, you will receive four 4x6 photos—valued at up to \$300—via mail. Credit cards accepted.

Reprints may be purchased from Jerry Hughes Photography.

Jerry Hughes Photography, Inc. • 214-373-6233

July Program

continued from page 5

Line of Dallas/Fort Worth Coach USA) will round out this ensemble cast by detailing how members can contribute to planning, organizing and staging monthly programs.

MPI TV presenters will provide an interactive opportunity to learn one-on-one about the committees and how you can be involved.

Committee representatives will be available during the opening reception and following the program to meet with you and discuss your options.

July Program Committee members: Sally Bresnahan (American Airlines Conference & Training Center) and Keith W. Hickman (The Sixth Floor Museum).

Among the hosts at the Omni Hotel at Park West are General Manager Mohamed Elmougy and Director of Sales Dianne Freeman.

20th
Anniversary
1977-1997

MPI

MEETING PROFESSIONALS INTERNATIONAL®
Committed to Educational Leadership

**Dallas/Fort Worth
Chapter**

MG
GRAPHICS

MICHAEL CLINE

Metro 972.263.1053

2525 A ve A Grand Prairie, Texas 75051

"proud printer of the MPI D/FW
newsletter for five years"

Editor's Note— Correction

Last month's *CURRENT* "News Briefs" included a news note about **Alainna Webb**, who has been named to the MPI D/FW Chapter Board of Directors.

Webb has been with The Carey Companies for more than a year, a fact overlooked by several proofreaders, including this editor.

(For the record: even though the note was attributed to Phyllis Firebaugh, CMP, it was not her error.)

We regret that the *CURRENT* wasn't current! Our apologies to Alainna Webb of The Carey Companies!

CURRENTly Editor's Notes

The June Awards Gala—what a spectacular evening! Kudos to **Patti Wilke, CMP** and her crew of volunteers for an outstanding job!

Lots of people were inquiring about the retrospective video. Eleven minutes of down-the-years shots—with



Gracie Hilton
The Write Stuff
Editor, the CURRENT

terrific background sounds of the 70s, 80s and 90s—provided a fast-paced, entertaining chronicle of MPI D/FW's history.

Thanks to **Debbie Holman** and the crew at **VISTA Photographic and Video Group** for

this memorable addition to the chapter's 20th anniversary celebration.

Copies—\$10 each—are available. Order yours by calling Holman, 972.380.0985.

We use lots of photos in the MPI D/FW Chapter newsletter. Candid photos by **VISTA** tell the story about chapter meetings—and other special events—in each month's newsletter centerfold.

"Head shots" are used in news stories about chapter events and in columns such as "Heard in through the Grapevine" and "Opinion, Please."

Some within the MPI D/FW membership have professional portraits as a part of their presentation packets.

Several chapter officers have professional head shots provided by **VISTA** (formerly Lazarow Photography) but others haven't made their way to the **VISTA** studio in Addison.

Check out the "head shots" throughout this issue. Can you tell which were shot with studio lighting and which were snapped at quickie passport photo studios—or were clipped from candid snapshots?

Professional portraits (head shots)—every professional needs them.

At this month's chapter meeting, Jerry Hughes of **Jerry Hughes Photography** will be on hand to take care of that need. Don't miss this opportunity!

See page 6 for details.

ghh ☺

Heard it through the Grapevine!



Lisa Flick, formerly with *Medieval Times*, is the new sales manager at *Hard Rock Cafe*.

Don Defeo reminds everyone that since March he has been director of sales at the *Radisson Hotel* in Fort Worth.

Debbie Holman reports that *Lazarow Photography* has a new owner and a new name: *VISTA Photographic and Video Group*. Holman assumes Mark Lazarow's membership.

Long-time MPI D/FW volunteer Lazarow was a "frequent fixture" at chapter meetings for almost five years.



the host for the monthly May meeting.

After 31 years as an airline pilot for *Eastern Airlines*, **Robert W. Cosner** moved from flying to promoting airlines. He is vice president of marketing/sales for *Miami Air International, Inc.* and was

"It's an outsource resource for meeting planners," said **Debra Lakin** when referring to her new business, *Meeting and Convention Resources*.

Carole Sharapata is excited to announce her move to *Destination Dynamics Dallas* as vice president of sales.

Keep up with personal news about fellow MPI chapter members—job changes, promotions, awards or special recognitions, weddings, or births—through "Heard it through the Grapevine." Please contact Mary-Therese Gnad (A Bunch of Grapes), 972-866-8640; FAX 972-613-4523, or gnadt@airmail.net about items of interest for this column. Please submit photo ("head shot") with your news item.



M.T. Gnad
'Grapevine' Columnist

George Graves, CHSE, said he just can't get away from the hotel business and has accepted a sales manager position with the *Adam's Mark Hotel*.



Mona Kestler joined *Renaissance Meetings & Incentives* as manager of business development. She was formerly with *Bauer Audio Visual, Inc.*

Susan McMahon has joined the staff of the *Omni Mandalay Hotel* at Las Colinas.

Steve Kemble, Steve Kemble Event Design, will work with secret service men this summer as he coordinates a meeting for U.S. Vice President Al Gore.



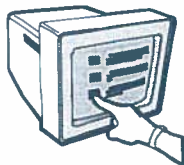
Dana Nickerson, CMP, Square One Productions, has been appointed to MPI's International Chapter Relations Committee

Debbie Meyers and *Bravo Entertainment* recently held a CD release party for Hunter Sullivan. Members may remember Sullivan performing at the 1996 MPI D/FW Awards Gala or his hit single, "King For a Day."

Phyllis Firebaugh, CMP, SEI Incentives, has been appointed to MPI's International Awards Committee.

Sally Goldesberry, CMP, Meetings and Exhibit Specialists, has been appointed to MPI's International Board of Directors. (See story on page 16.)

MPI D/FW Chapter



HANDS-ON

TECHNOLOGY INSTITUTE

The Hands-on Technology Institute is a series of all-day (Saturday) intensive courses geared toward the meeting professional. And the price is right! Comparable courses cost more than twice as much—for fewer hours of instruction! Courses are open to all professionals and co-workers.

July 26, Saturday

MS Excel for Windows 7.0 on Windows '95 Fundamentals

August 16, Saturday

MS Excel for Windows 7.0 on Windows '95 Tools & Techniques

August 23, Saturday

Meeting Management Software Options

September 6, Saturday

MS Word for Windows 7.0 on Win '95 Beginner

September 20, Saturday

MS Word for Windows 7.0 on Win '95 Intermediate/Advanced

October 4, Saturday

MS Access 7.0 on Win '95 Beginner (Event Mgmt. Software)

October 18, Saturday

MS Access 7.0 on Win '95 Intermediate/Advanced (Event Mgmt.)

November 1, Saturday

MS Powerpoint 7.0 on Win '95 Beginner

November 15, Saturday

MS Powerpoint 7.0 on Win '95 Intermediate/Advanced

All classes (\$59 each) meet at SABRE Training Center, 4200 American Blvd., Fort Worth, 9:00 a.m.-5:00 p.m.

For more information or to register for classes: O.D. O'Donnell (Nightlife Talent & Management Agency) • 214-691-4417

Meeting Management Software Preview Feature of August Technology Institute

Three "top" meeting management software packages—Meeting Trak, Peopleware and PlanSoft—will be reviewed or previewed at the August 23 session of MPI D/FW's Technology Institute.

"Only recently has anyone seen all three of these in one places," said Sherri Cook, CMP (Sherri Cook & Associates). "The D/FW Chapter will have the rare opportunity to review these software programs in a hands-on session."

Each software program will be demonstrated for approximately two hours with "Q&A" time to discuss flexibility, features and customization needs ability.

Meeting Trak is a well-established meeting management software package utilized by thousands of meeting professionals.

Peopleware was previously a registration software package which expanded to include all aspects of meeting management.

PlanSoft is a software package that will be available this fall. PlanSoft claims that it will be "the industry software for facilities and planners" by utilizing the same forms and updating for each other on-line.

Find out which suit your needs: to do lists, attendee profiles, registration, meeting set ups, audio visual needs, food and beverage, speaker and exhibitor profiles, accounting, history tracking, badges, tickets, confirmation letters, labels, certificates, transcripts, copying a meeting, numerous reports, etc.

To register, contact Sherri Cook, CMP at 972.732.9396 or O.D. O'Donnell (Nightlife Management & Talent) at 214.691.4417.

Cost is only \$59 for this course or a package of seven courses (beginner and intermediate courses in Word, Excel, Access, and Powerpoint, split among your peers if desired) for \$250.

Take Advantage of Professional Growth Awards!

Did you miss the Professional Education Conference because it was not in your budget?

Did the cost of obtaining your CMP keep you from taking the next step in your career?

Did you miss a relevant executive workshop because of registration fees?

Don't miss out! Professional Growth Awards (PGA) lends a hand to members who want to further their careers through educational sessions.

With the generous donations from monthly raffles, members of the D/FW chapter enable the PGA Committee to provide financial support to qualified members.

For details or to request PGA applications, call Patty Stern (Five Star Limousines) 972.234.5466.

Volunteers Needed!

Vice President

Education



Vice President / Education
Peg Wolschon
Kerrville Bus Co. Coach USA
972.263-0294 • FAX 972.262.2761

Would you like to . . .

- Help create new educational programming?
- Test your creativity?
- Sharpen leadership skills?

Call Peg Wolschon today!

Get involved in MPI D/FW!
Involvement through Service!

Show Me the Money!

V.P. Finance Presents Re-Cap of 1996-97 Chapter Year

By Melissa Parks, CMP

H.D. Vest Financial Services, Inc.

Show me the money! Here's the scoop on how the MPI D/FW Chapter handles its money.

The July 1996-June 1997 operating budget was \$296,428. The chapter budgeted to make \$296,428 and to spend \$296,428.

The Board of Directors, which follows strict procedures to maintain fiscal stability, always has a balanced budget and has developed a reserve (emergency) fund.

Balance Sheet as of May 30, 1997

Cash and Bank Accounts:	\$90,820
Dreyfus Money Market Acct:	\$36,473
Total Cash and Bank Accounts:	\$127,293
Total Assets:	\$127,931
Liabilities	\$0

The May 30 balance sheet indicates a considerable sum. However, last month, in addition to monthly chapter expenses, checks for approximately \$66,000 were written to the beneficiaries of the The Kids Charity Ball.

The \$36,473 in the Dreyfus Money Market Account is the reserve fund and is not used for chapter expenses. The goal is to never take money from this account, but to try to add to it each year.

The charts on this page detail income sources and expense disbursements.

The Kids Charity Ball generates half the income and expenses. The chapter retains approximately \$9000 for chapter expenses, including the newsletter. After all expenses are paid, the remainder of the funds flow through the chapter to the charities.

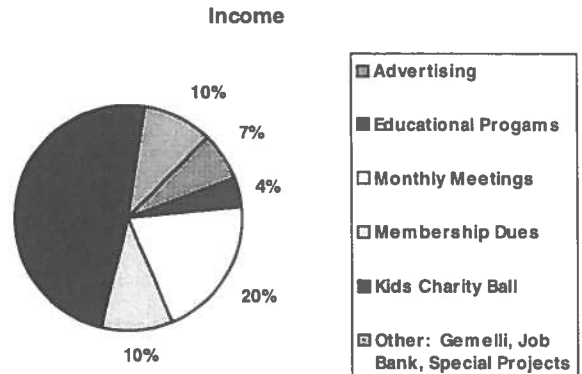
Primary sources of income are dues, monthly meeting charges and other projects such as Job Bank, TEC, etc.

Major expenses include administration expenses of the chapter office and other member services such as the monthly newsletter, educational offerings, monthly meetings, etc.

Income:

Advertising	7%
Educational Programs	4%
Monthly Meetings	20%
Membership Dues	10%
The Kids Charity Ball	49%
Other*	10%

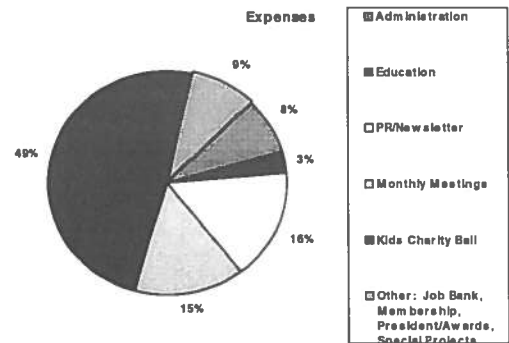
*Gemelli, Job Bank, Special Projects



Expense:

Administration	8%
Education	3%
PR/Newsletter	16%
Monthly Meetings	15%
The Kids Charity Ball	49%
Other:	9%

*Job Bank, Membership, President, Awards, Special Projects



Finance is Fun!

Vice President

Finance



Vice President / Finance

Melissa Parks, CMP

H.D. Vest Financial Services, Inc.
972.863.6160 • FAX 972.863.6128

Would you like to . . .

- Be involved with the chapter's financial operations?
- Learn about budgets?
- Learn Microsoft Excel?
- Help collect no-show payments?
- Create long-term financial goals?

Call Melissa Parks, CMP today!

Get involved in MPI D/FW!
Involvement through Service

"Oscar-Quality" Speakers!

- ★ World Leaders
- ★ Sports Celebrities
- ★ Inspirational Figures
- ★ Diversity Experts
- ★ Technology/Futurists
- ★ Entertainers

International
Speakers Bureau, Inc.

214/824-3885
800/842-4483

Ask About Our Next ISB
Showcase to Preview Our Speakers!

MPI

MEETING PROFESSIONALS INTERNATIONAL®
Committed to Educational Leadership

June Meeting Highlights

Here's to the Winners—'Celebrating the Vision' Honors Leaders and Outstanding Achievers



Awards Committee members **Susie Carr, CMP** (Annuity Board of the Southern Baptist Convention) and **Pat McCain, CMP** (Krisam Hotels and Resorts)



On the run—keeping check on myriad details: Awards Gala Chair **Patti Wilke, CMP**.



A dozen presidents—past, pre **Pynes** (Hand & Associates Co (Sunbelt Motivation & Travel, (Mary Kay, Inc.), **Mary Jo Mal** (Mary Cowart Meeting Consu (Tarrant County Junior Colleg **Novelli, CMP** (Sterling Hotels



LEFT: **Esther Wigley** (Appointments) was named the MPI D/FW "Rising Star." **O.D. O'Donnell** (Nightlife Talent & Management Agency) received the Suzi Fiveash Award for Membership Recruitment—for the third consecutive year.



Mary Jo Malone (Swissotel, Chicago), accepted a check for \$5,000 on behalf of the MPI Foundation.



"Special Recognition for Innovation in Programs" honors went to the May Program "Incentive Travel: Next Stop Nassau" Committee: **Steven Foster** (Gray Line of Dallas/Fort Worth Coach USA), **Peg Wolschon, CTP** (Kerrville Bus Company Coach USA), **Dana Nickerson, CMP** (Square One Productions) and **Steve Kemble** (Steve Kemble Event Design). Not pictured: **Cindy Hamilton**, who was onstage presenting another award!

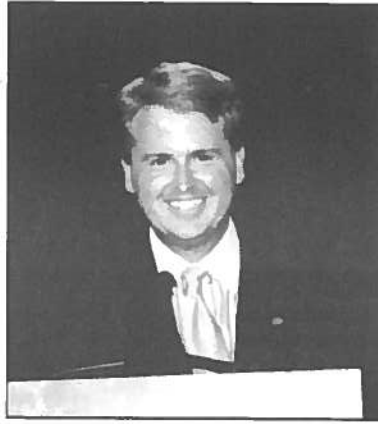


Honored for "perfect attendance" at 1996-97 chapter meetings: **Center**, **Susan Conley, CMP** (Independent Planner), **Steven Fos USA**, **O.D. O'Donnell** (Nightlife Talent & Management Agency Incentives).

Photos by Vista



and future— gathered to celebrate MPI D/FW's 20th Anniversary: Gregory Pynes (Hand & Associates Communications), Pat Smith, CMP (P.F. Smith Enterprises), Bill Boyd, CMP (Sunbelt Motivation & Travel, Inc.), Ron Trammel (Mary Kay, Inc.), Phyllis Firebaugh, CMP (SEI Incentives), Norb Dettmann, PhD, CMP (Sterling Hotels and Resorts), Lisa South, CMP (Computer Language Research), and Mary Lynn Novelli, CMP (Sterling Hotels and Resorts).



Incoming President **Gregory Pynes** (Hand & Associates Communications) was named MPI D/FW Chapter Planner of the Year. Outgoing President **Mary Lynn Novelli, CMP** (Sterling Hotels and Resorts) was named Chapter Supplier of the Year.



Standing in front of the "Twenty Year Wall of Memories" are **Wally Stone** and **Brenda Miller, CMP** of The Trade Group.



The Wyndham Anatole, host of the January 1997 chapter meeting, was named "Facility of the Year." Representing the Anatole were **Kristy Sartorius, Pat Lupsha, Wendy Ezernack, Kristen Eliason** and **Michelle Carter, CMP**.

**Photos
by
Vista**



Phyllis Firebaugh, CMP (SEI Incentives) and **Wendy Foster** (Circle R Ranch) at the City Place Conference Center.



LEFT: "Program of the Year" honors went to "Involvement/Natural Resources" featuring **Keith Harrell** (center), the July 1997 meeting. Pictured with Harrell are Program Committee members **Debora Shaw** (City Place Conference Center) and **Wendy Foster** (Circle R Ranch).

RIGHT: Past presidents **Ellen Beckert** (Freeman Companies) and **Ron Trammel** (Mary Kay, Inc.) received 20-year membership pins in MPI D/FW's inaugural presentation of "Circle of Commitment" pins. Trammel was the first president of MPI D/FW; Beckert was president in 1984-85.



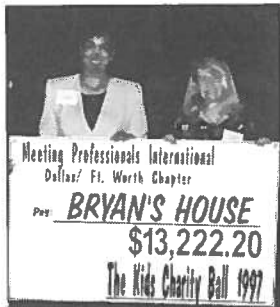
continued on page 12

Award Winners Honored at Annual Presentation

continued from page 11



Meeting Professionals International
Dallas/ Ft. Worth Chapter
RICHLAND COLLEGE SCHOLARSHIP FUND
\$13,222.20



Meeting Professionals International
Dallas/ Ft. Worth Chapter
BRYAN'S HOUSE
\$13,222.20
The Kids Charity Ball 1997



Meeting Professionals International
Dallas/ Ft. Worth Chapter
A WEEKEND TO WIPEOUT CANCER
\$13,222.20

Checks for \$13,222.20, proceeds from The Kids Charity Ball, were presented to each of five charities: Richland College Scholarship Fund, Genesis Women's Shelter, A Weekend to Wipeout Cancer, Bryan's House, and Love for Kids.

Photos by Vista



RIGHT: Joe Kolb (Don Dillon & Associates), MPI D/FW Chapter secretary



Eli Gersheson (Vista Photographic and Video Group), videographer; and Shelley Kaler (Vista Photographic and Video Group), photographer.



1996-97 MPI D/FW Chapter President Mary Lynn Novelli, CMP (Sterling Hotels & Resorts), paid tribute to the Board of Directors who worked hard to "Focus on the Vision."

Hall of Fame

Please salute the following companies and individuals for their contributions to the Annual Awards Gala at the Adam's Mark Hotel Dallas.

AWARDS GALA SPONSORS

Stan Soroka
Tony W. Cummins
The Adam's Mark Hotel Dallas

David Gisler
Steven Mahelona
Freeman Decorating Company

Eric Meyers
AVW Audio Visual, Inc

Debbie Holman
VISTA Photographic & Video Group

Patti Tate, Owner
Regency Plaza Printing

Esther Wigley, MAS
Appointments

Mark Glosser
Medi Park

Brenda Miller, CMP
The Trade Group

James C. Monroe, CMP
Gale Sliger Productions

O.D. O'Donnell
Nightlife Talent & Mgt. Agency

Pat McCain, CMP
Krisam Hotels & Resorts

Christopher Chamberlyn
The Sterling Rose

Linda Thornton
Fun Factory

AWARDS GALA COMMITTEE

Chair: Patti Wilke, CMP • Independent Planner

Susie Carr, CMP • Annuity Board of the SBC

Tony Cummins • Adam's Mark Hotel Dallas

Marti Fox, CTC • BTI Americas, Inc.

David Gisler • Freeman Decorating company

Lynn Johnson • Independent Supplier

Pat McCain, CMP • Krisam Hotels & Resorts

Lesley Meyer, CMP • Sunbelt Motivation & Travel, Inc.

Debbie Meyers • BRAVO! Entertainment

Brenda Miller, CMP • The Trade Group

James C. Monroe, CMP • Gale Sliger Productions

O.D. O'Donnell • Nightlife Talent & Mgt. Agency

Diane Smith, CMP • Alcon Laboratories

Bob Walker • AVW Audio Visual

Esther Wigley • MAS, Appointments

ADVISORS

Mary Lynn Novelli, CMP • Sterling Hotels & Resorts

Cindy Hamilton • City Place Conference Center

Executive Board



**MPI D/FW CHAPTER
President**
Gregory Pynes
*Hand & Associates
Communications*
972.248.4889
fax: 214.696.9529

MPI

MEETING PROFESSIONALS INTERNATIONAL®
Committed to Educational Leadership

1997-98

Dallas/Fort Worth Chapter Officers and Directors



President-Elect
Colleen Rickenbacher, CMP
Dallas CVB
214.571.1040
fax: 214.652.4263



Immediate Past President
Mary Lynn Novelli, CMP
Sterling Hotels & Resorts
972.402.4875
fax: 972.402.4889



Vice President/Administration
Susie Carr, CMP
Annuity Board of the SBC
214.720.4658
fax: 214.720.4792



Vice President/Education
Peg Wolschon
Kerrville Bus Company Coach USA
972.263.0294
fax: 972.262.2761



Vice President/Finance
Melissa Parks, CMP
HD Vest Financial Services, Inc.
972.863.6160
fax: 972.863.6128



Vice President/Membership
Delinda Dudley
Malibu Speed Zone
972.247.7223
fax: 972.247.1581



Vice President/Programs
Steven Foster
Gray Line of Dallas/Fort Worth Coach USA
214.630.1000
fax: 214.630.4820



Vice President/P.R. & Marketing
Marsha Singer
The Dallas Directory, Inc.
214.823.4370
fax: 214.821.1856

Board of Directors • Planner Members



Cheryl Beasley, CMP
SABRE Travel Info. Network
817.963.2025
fax: 817.963.1622



Dana Nickerson, CMP
Square One Productions
214.343.8067
fax: 214.343.6166



Tamara Quilty
Sprint
972.405.5177
fax: 972.405.5053



Linda Vest, CMP
State Farm Insurance
972.732.5970
fax: 972.732.5727

Board of Directors • Supplier Members



Kristi Carter
J & S Audio Visual, Inc.
972.241.5444
fax: 972.247.2590



Tony Cummins
Adam's Mark Hotel
214.922.0316
fax: 214.922.0308



Betty Garrett, CMP
Garrett Speakers Internat'l
972.513.0054
fax: 972.513.0540



Alaina Webb, CMP
The Carey Companies
214.748.0448
fax: 214.748.0441

MPI D/FW Welcomes 14 'New Kids on the Block'

Beth Amadon

Hotel Inter-Continental
414 St. Charles Avenue
New Orleans, LA 70471
504/585-4344
504/585-4350 (fax)
Supplier

Alicia Astudillo

Tropical Incentive Holiday
Edificio Madrid Local 1-B
Cancun, Quintan 77500 Mexico
52-98-844826
52-98-848497 (fax)
Supplier

Randa D. Collins

Southfork Ranch
3700 Hogge Road
Parker, TX 75002
972/442-7800
972/442-5259 (fax)
Supplier

Steven B. Crawford

Yellow Rose Touring
& Special Events
1950 Stemmons Freeway
Suite 2046
Dallas, TX 75207
214/746-3791
214/746-3786 (fax)
Planner

Terry G. Ellegood

Freeman Decorating Company
8881 Ambassador Row
Dallas, TX 75247
214/634-1463
214/634-2221 (fax)
Supplier

Julie E. Enloe

Pagemart Wireless, Inc.
6688 North Central Expressway
Suite 800
Dallas, TX 75206
214/706-8279
214/750-4599 (fax)
Planner

Ashley P. Enloe

Hyatt Regency DFW
International Parkway
DFW Airport, TX 75261
972/615-6735
972/615-6825 (fax)
Supplier

Bonnie S. Gore

Worthington Hotel
200 Main Street
Fort Worth, TX 76102
817/882-1612
817/335-3847 (fax)
Supplier

Annette M. Marquez

Beauti Control Cosmetics
2121 Midway Road.
Carrollton, TX 75006
972/458-0601
972/661-2538 (fax)
Planner

Megan McDonald

Holiday Inn Select Dallas Central
10650 North Central Express-
way
Dallas, TX 75231
214/373-6000
214/368-2932 (fax)
Supplier

Judy L. Puckett

Johnson & Johnson Medical Inc.
2500 East Arbrook Blvd
Arlington, TX 76014
817/784-5303
817/784-5482 (fax)
Planner

Kristin D. Robl

Dr Pepper / Seven Up Inc.
8144 Walnut Hill Lane
Dallas, TX 75231
214/360-7116
214/360-7783 (fax)
Planner

Mechille Vera Cruz

Tour 18 Golf Course
9718 Amen Corner
Flower Mound, TX 75028
817/430-2000
817/430-2007
Supplier

Deborah A. Wayland

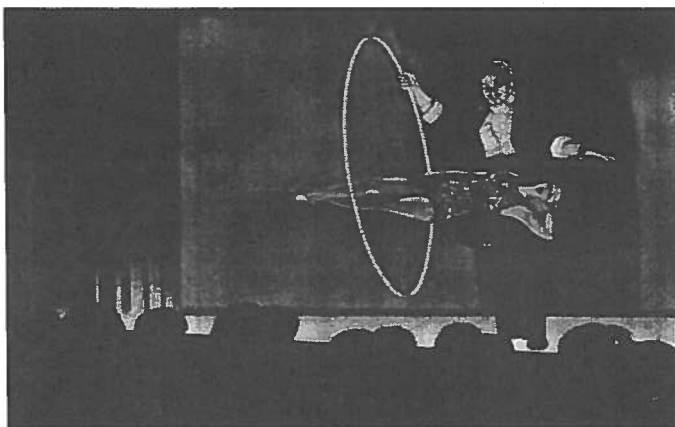
dani
1717 North Harwood DMA
Dallas, TX 75201
214/880-9018
214/922-1381 (fax)
Supplier

**MPI
TEC**

Mark your calendar now!

**Second Annual
Texas Education Conference**
November 1998 • Galveston

MPI Hill Country • MPI Houston Area • MPI D/FW



Do your events need a lift?



Customized **Magic/Comedy/Variety** to fit your event.

214/349-8831
800/594-7284

www.volente.com/studebaker

***If all your attendees get out
of a 3 day meeting is a tan...***

You may have a failure to communicate.

***For a message with more impact and a
greater return on your investment, call:***

Odyssey Communications Group
8140 Walnut Hill Lane, Suite 200
Dallas, Texas 75231

**www.odysseygrp.com
214-369-6294 fax 214-369-6298**

D/FW, Hill Country, Houston Area Chapters Join Forces to Create First Annual Texas Education Conference

Almost 200 MPI members attended the First Texas Education Conference last month at the DFW Lakes Hilton in Grapevine. A joint effort of the D/FW, Hill Country and Houston Area Chapters, participants came from all over the state. Evaluations were positive on all aspects, from facility to trade show to attendance to variety of exhibitors to educational opportunities to special highlights—such as a wine tasting in Grapevine and the opportunity to sit for professional “head shots.”

The Second Annual TEC is set for early November 1998 in Galveston.



LEFT: Texas chapter presidents present for TEC were **Mary Lynn Novelli, CMP** (Sterling Hotels & Resorts), D/FW; **Janet Bloomquist, CMP**, (Texas Electric Cooperatives), Hill Country; and **Coni Tierney, CMP** (M.D.Anderson Cancer Center) Houston Area.



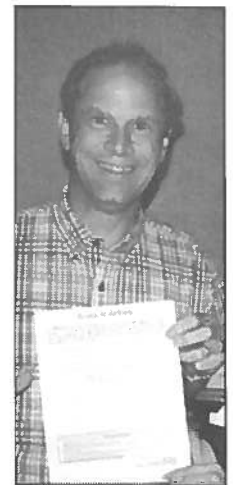
TEC Co-chair **Sally Goldesberry, CMP** (Meetings & Exhibit Specialists) and **Ed Howard** (Austin North Hilton & Towers), who won a trip to Cancun, courtesy of Fiesta America Hotels.



TEC Co-chair **Betty Garrett, CMP** (Garrett Speakers International) and **Phyllis Firebaugh, CMP** (SEI Incentives), chair of D/FW Chapter Education 2000 Committee which coordinated TEC efforts



Chris Slaughter (Worthington Hotel) and **Lisa Busbe** (Fort Worth CVB) were among the Fort Worth sponsors of the afternoon break. Another sponsor was Ramada Fort Worth.



RIGHT: **Steve Hames** (Mannatech) was all smiles after winning two American Airline tickets. Sponsor Committee member **Diane Smith, CMP** (Alcon Labs, Inc.) presented the tickets to Hames.



Highly ranked educational workshops included tracks on meeting management and trade show design, legal and liability issues, contract negotiations, and technology in the meetings industry. **Connie Merritt** (Connie Merritt Productions) and **Marlane Miller** (Brainstyles) were among several presenters.



Trade Show exhibitors were pleased with the attendance and more importantly, quality time spent with their contacts. Many events—including meals, breaks and raffle drawings—were staged in the Trade Show area.

RIGHT: **Lisa Barham** (DFW Reader Board) demonstrates her new software during the Trade Show. **Brenda Miller, CMP** (The Trade Group), coordinated the Trade Show exhibitors.



The **TEC Planning Committee** was made up of more than a dozen members of the D/FW Chapter. A complete list of participants, sponsors and speakers who donated their time, goods and services to make this a success is included in this newsletter.

Goldesberry Fills Vacancy on MPI's International Board of Directors

Meeting Professionals International (MPI) has elected MPI D/FW Chapter member Sally Goldesberry, CMP (Meetings & Exhibit Specialists) to fill a vacant seat on the International Board of Directors.



Sally Goldesberry
Meetings & Exhibit
Specialists

A member of MPI since 1979, Goldesberry has a strong commitment to MPI and the meetings industry.

She has held numerous leadership positions in three MPI chapters,—Rocky Mountain, Arizona Sun Belt and Dallas/Fort Worth.

Goldesberry is currently chair of the International Chapter Relations Committee. She is also a member of MPI's Strategic Planning Task Force.

"Sally Goldesberry is a true profes-

sional who will make valuable contributions to the Board's important deliberations," says Edwin L. Griffin, Jr., CAE, MPI Executive Vice President/CEO. "She owns a successful independent business and has held chapter leadership positions which are a testament to the confidence placed in her by local peers."

Her business, Meetings and Exhibit Specialists, provides full service meeting and exhibition management and advisory services to corporations and associations.

"MPI has become the leading meeting industry association and it is truly an honor to be asked to serve as an International Board member," says Goldesberry. "The programs, resources and philosophies of MPI have been invaluable in providing definition and direction for my professional career."

Sally's husband of 15 years, Roger, is also in the meetings and hospitality in-

TIA Unveils New Tourism Web Site

Want to know the latest tourism statistics? Need information about important travel-related legislation?

The Travel Industry Association of America has unveiled a website that contains this information and more.

The site (www.tia.org) contains comprehensive statistical information on all aspects of tourism; highlights from *Newsline*, the organization's publication; and links to the web sites of many of its 2,300 members.

dustry; he is a general manager with John Q. Hammons Hotels.

Although the Goldesberrys now live in Houston, Sally has remained active in the Dallas/Fort Worth chapter.

The Goldesberrys have a 12-year-old son, Stuart, an avid baseball player. Sally also has a 27-year-old daughter, Margo, who married last June. Margo, a kindergarten teacher, and her husband live in Dallas.



THE LUXURY COLLECTION
ITT SERATON



Imagine your next board meeting at The Orchid at Mauna Lani.

☛ 31,000 square feet for indoor meetings ☛ 160,000 square feet for outdoor functions ☛ Business Center and professional Catering and Conference Services staff ☛ World-class cuisine ☛ 4 Restaurants and 3 Lounges ☛ Golf on the Francis H. I'i Brown



THE ORCHID
AT MAUNA LANI
Island of Hawai'i

courses, home of the Senior Skins Game ☛ Tennis ☛ Spa and fitness ☛ Beach boys' cultural and ocean activities. For more information, call 1-800-294-4884 and ask for our Meeting Planner kit. (1997 Hot Dates: 7/27-8/8, 9/6-13, 10/23-11/2, 12/3-8)

One North Kanihā Drive, Kohala Coast, Hawai'i 96743, Telephone: 800-294-4884, Sales Facsimile: 808-885-8886

Coming To Dallas August 27th

HSMIAI Meetings Quest™

If you are a Meeting Planner and have not heard about Hospitality Sales & Marketing Association International Meetings Quest Tradeshows, NOW is the time to see first hand what we can offer. After providing top notch shows for hotels and meeting professionals for over 14 years we are bringing our unique formula for success, *(Good Service + Good Products = Good Results)* to DALLAS!



You won't get that rushed feeling you experience at some industry shows. Meet *face to face* in an electrifying atmosphere with suppliers who WANT your business! Best of all, *IT'S FREE TO ALL MEETING PLANNERS*. We offer Morning Seminars on technology trends affecting today's meeting professional, a reception, luncheon with speaker's program, and of course our afternoon exhibits. AND, there will be some fabulous grand prizes given away. The number of qualified planners is limited to maintain a proper Buyer to Seller ratio. Want more information . . . give us a call at 800-735-7770.

It is not just another trade show, but an excellent opportunity for you to do quality BUSINESS!



HSMIAI

Meetings Quest™

Tradeshows Since 1984

**For instant information on the 1997 Series call:
Meeting Quest's Planner Link Fax-on-Demand at 1-800-983-3283 x-600**

For Booth Sales
Information Contact ...
Barbara Cox or
Robin Wilkinson Today!!
(301.627-7770
www.jtdunninc.com)

JTDunn Enterprises is the hospitality division of James T. Dunn Enterprises Inc.
14440 Old Mill Rd. • Upper Marlboro, MD 20772 • (301) 627-7770 • (301) 952-9266 • www.jtdunninc.com

President Novelli Salutes Chapter Leaders with Appreciation Dinner at Lone Star Park

Last month MPI D/FW 1996-97 Chapter President Mary Lynn Novelli, CMP (Sterling Hotels & Resorts) toasted chapter leaders—members of the board of directors, committee chairs and co-chairs, international liaisons and past presidents—at a champagne “thank you!” reception at Lone Star Park in Grand Prairie.

Hosting dinner and the opportunity to enjoy the horseraces from Lone Star’s Silks Dining Room was Mike McCoy, the park’s director of sales.

Novelli thanked Patti Wilke, CMP for organizing the event; Esther Wigley, MAS (Appointments) for supplying certificates of appreciation; and Pat McCain, CMP (Krisam Hotels & Resorts) for completing the certificates.

Thanks to a host of hosts in Grand Prairie, attendees enjoyed wine with dinner. Supplying the libations were Grand Prairie CVB (Randy Sisson); The Palace of Wax & Ripley’s Believe It or Not (Kay Webb & Bob Phillips); Kerrville Bus Company Coach USA (Peg Wolschon); and Pavillion Conference Center (Ron Davis).



Mike McCoy (Lone Star Park) and Mary Lynn Novelli, CMP (Sterling Hotels & Resorts)

Photos by Vista



D/FW Meetings & Hospitality Industry

JOB BANK

Voice Mail
972-381-5624

E-mail
wcallahan@firesprink.org

*Find a Good Job!
Find a Good Employee!*



Features

- List of job openings with contact information
- Updated weekly
- Instructions about listing a job
- Leave a message for Job Bank committees of MPI, NACE or HSMA
- Free for applicants

To volunteer for the Job Bank Committee, call
Wendy Callahan
(American Fire Sprinkler Association)
214-349-5965

NEWS from MPI Headquarters

MPI Develops Text for Meeting Professionals

A new international textbook for meeting professionals, *Meetings and Conventions: A Planning Guide*, was developed and produced by Meeting Professionals International (MPI) Canadian Council.

The Planning Guide explores the basic skills and knowledge needed by meeting professionals. Fourteen chapters include information on Meeting Objectives, Budget, Program Design and Development, Site Selection, Event Details, Marketing, Logistics, Post-Event Activities, Exhibits and Trade Shows, VIP/Protocol, Registration, Sponsorship and Fund-Raising, Speakers, and Communications.

Funded through a generous corporate gift by Production Group International (PGI), the book represents a partnership between the Government of Canada's Department of Human Resources Development, MPI's Canadian Council, the MPI Foundation, and MPI.

The textbook represents the first product of the MPI Foundation funded by the Connections 2000 Capital Campaign.

The textbook can be purchased from the MPI bookstore by calling 1-972-702-3044. The cost is \$49.95 for MPI members and \$64.95 for non-members.

MPI's Newest Chapter—Number 58— Situated in Nation's Oldest Capital City

Meeting Professionals International's Board of Directors recently approved the formation of the New Mexico Chapter.

The New Mexico Chapter (in Santa Fe) brings MPI's number of chapters to 58 in addition to three clubs.

The chapter currently consists of 50 members and has begun to produce monthly educational meetings as well as a monthly newsletter.

Long range goals for the chapter include conducting seminars in various areas around the state, developing a telephone network to follow-up on monthly educational meetings and increase membership.

MPI Charters Norway Club

Meeting Professionals International's Board of Directors recently approved the formation of a Norway Club, MPI's third club.

Currently, the MPI Norway Club has 20 members—13 planners and seven suppliers. A steering committee has been elected and educational programs are in place.

The club expects to reach 50 members within one year. The Norway affiliate is now the second active MPI club in Europe since six others have evolved from club to chapter status by virtue of their membership growth over the past four years.

A GATHERING OF
PROFESSIONALS
MPI CELEBRATES A QUARTER CENTURY
WORLD EDUCATION CONGRESS
AUGUST 3 - 5 • 1997
BALTIMORE • MARYLAND

• 2 General Sessions •

• MeetingPlace '97 •

• More Than 50 Workshops •

• Seven Learning Tracks •

CALL 1.972.702.3030
FOR REGISTRATION
MATERIALS

MPI

MEETING PROFESSIONALS INTERNATIONAL
Committed to Educational Leadership

1155 LBJ Freeway, • Suite 1200
Dallas, Texas 75211-5903
PH: 972.702.3000 • FAX: 972.702.3070
http://www.mpiweb.org

MPI

MEETING PROFESSIONALS INTERNATIONAL®

Committed to Educational Leadership

Dallas/Fort Worth Chapter
4020 McEwen • Suite 105
Dallas Texas 75244

FIRST-CLASS MAIL
U.S. POSTAGE
PAID
DALLAS, TX
PERMIT NO. 19



DALLAS/FORT WORTH CHAPTER

Del Lago's all-suites conference center and golf resort is the type of meeting location you'd expect to find only at more expensive destinations. Conference facilities are flexible and roomy, with 60,000 sq. ft. of function space. For water sports enthusiasts, we've got a 300-slip marina with a white sand beach and every imaginable type of watercraft. Beautiful Lake Conroe, surrounded by forests, provides great fishing. Our championship golf course features waterfalls, fountains and an island tee box. A lakeside gazebo, sports bar and outstanding restaurants are perfect places to relax and unwind. You'll retire to one of 357 luxurious Lakeside Tower Suites, Lakeside Villa Suites or Golf Cottage Suites. Give us a call and we'll tell you more. Like Texas, Del Lago is worth bragging about.



 **DEL LAGO**
GOLF RESORT & CONFERENCE CENTER

600 Del Lago Boulevard
Montgomery, TX 77356
Call 1-800-DEL LAGO (335-5246)
for free video and information.
e-mail: dellago@dellago.com
<http://www.dellago.com>



For the best of Florida and Arizona, meet in Texas.