

CURRENT

Meeting Planners International

April 1993

Dallas-Fort Worth Chapter

President's Message

Election of Chapter Officers and Board Members Is a Most Important Process

By Mary W. Cowart
Mary Cowart Meeting Consultants

The D/FW chapter of MPI will soon elect officers and board members to lead our chapter for the coming year. This is one of the most important processes we go through as a chapter.

The nominating committee, under the leadership of Lisa South, CMP, has worked very hard on the proposed slate of officers and board members. By now you should have received and responded to the committee's proposal.

As president, I participated as an "informational" non-voting member. Choosing future leaders is always a challenging task; we are fortunate to have so many

members who stand out as future leaders.

Each person recommended for consideration will be put on the Leadership Incubator list and presented to the new board to assist them in selecting chairs for various committees within our infrastructure.

The leadership of our chapter is vital to the successful achievement of our goals. As we enter into our election

process let us all be mindful that these new officers and board members will carry us forward in '93-'94.

Thank you for *Getting into the ACT* and participating in the election of our future leaders.



Mary W. Cowart

MPI

MEETING PLANNERS INTERNATIONAL®

April D/FW Chapter Meeting "What Every Meeting Planner Should Know about the ADA"

featuring Ted Robinson,
Mary Jean Hayden & Bruce Jaster

April 22, Thursday

Fairmont Hotel/Dallas
1717 North Akard
Dallas, Texas

Orientation 11:00 a.m.
Registration & Reception 11:30
Lunch & Program 12:00 noon

R.S.V.P.
by noon, Tuesday, April 20
Sandy or Kim
214-343-0555

Advance Registration \$22
Late Registration \$30
Guest Registration \$25

See page 3 for more details. See page 2 for reservation policy.

INSIDE

April Meeting Info

3

News Briefs

4

'On a Dime' Workshop

5

Membership Update

6

Recruitment Drive

7

'Give Kids the World'

8

Personality Profiles

9

Last Month's Meeting

10

Current

Meeting Planners International Dallas/Fort Worth Chapter

Newsletter Staff

Editor
Gracie Hatfield Hilton
The Write Stuff
Phone & FAX
metro 817-467-7439

Director of Communications

Patricia Tripp, CMP
Princess Cruises & Tours
Phone: 214-230-6994
FAX: 214-230-6993

Vice President/Public Relations

Lesley Meyer, CMP
Sunbelt Motivation & Travel, Inc.
Phone: 214-401-0210
FAX: 214-558-0916

Advertising Chair

Stephanie Davis
Sheraton Park Central Hotel
Phone: 214-851-2016
FAX: 214-991-4557

Photographer

Mark Lazarow
Mark Lazarow Photography
214-380-0985

Department Editors

Membership
Bruce Jaster
The Jaster Companies, Inc.
214-891-8891

Education

Kim Kelley, CMP
The Tower Club
214-220-0403

Public Relations

Holly Adams
The Southland Corporation
214-828-7770

Staff Writers

Becky Milkle
Adolphus Hotel
214-742-8200

M.T. Gnad

National Business Association
214-991-5381

Anita Selgers

Adolphus Hotel
214-742-8200

Current is published 12 times yearly for the D/FW Chapter of Meeting Planners International, the industry's leading educational and networking resource in meetings management. Statements of fact and opinion are the responsibility of individual writers and do not imply collective opinion of the officers or members of MPI.

Upcoming MPI Events

April 22, Thursday

Chapter Meeting
"Americans with Disabilities Act"
Fairmont Hotel
11 a.m./Luncheon

April 22, Thursday

Executive Workshop
"Hotel Security/What You Should Know"
Fairmont Hotel
(after chapter meeting)

May 27, Thursday

Chapter Meeting
Chapter Awards & Officer Installation
Loews Anatole
6 p.m./Dinner

June 17, Thursday

Chapter Meeting
Hackberry Creek Country Club
11 a.m./Luncheon

June 26-27

Chapter Management Forum
Atlanta, Georgia
for more info call
1-214-712-7706

June 27-29

MPI Annual Conference
Atlanta, Georgia
for more info call
1-214-712-7751

NOTE: Chapter meeting plans are subject to change.
Check the *Current* each month to confirm details.

Meeting Reservation & Attendance Policy

Registration fees will be collected at the door; advance payments are not accepted. If paying by check, please have check completed before approaching registration table. Reservations must be made by RSVP deadline for advance registration fee to apply. Late reservations and walk-ins will be accepted on a SPACE AVAILABLE basis. Cancellations must be made by the RSVP deadline. No-shows will be billed. Members are responsible for "no-show" charges for their guests. Guests are limited to attending three meetings per year (spouses are an exception).



MPI 1993 ANNUAL CONFERENCE
BRINGING LIFE TO LEADERSHIP
JUNE 27-29 • ATLANTA, GEORGIA

For registration materials:
MPI
MEETING PLANNERS INTERNATIONAL
1950 Stemmons Freeway • Suite 5018 • Dallas, TX 75207-3109
TEL 1 (214) 712-7751 • FAX 1 (214) 712-7795

April Meeting Highlights

Meeting Planners Should be Informed about the Americans with Disabilities Act

By Peg Wolschon
Kerrville Bus Company

The April 22 meeting of the D/FW chapter of MPI will highlight the Americans with Disabilities Act (ADA) and how it affects meeting planners and suppliers. The luncheon meeting will take place at the Fairmont Hotel in downtown Dallas.

The ADA, the broadest Civil Rights legislation ever passed in America, is designed to protect individuals with disabilities from discrimination in employment, public services and transportation, public accommodations and telecommunications.

Panel member Ted Robinson is one of a trio of ADA experts will present an educational program about the federal legislation that has made us aware of the special needs of this group of people.

Robinson, president of the North Texas Amputee Group, has provided the community with a tremendous amount of help and information about people with disabilities.

Mary Jean Hayden is coordinator of Baylor Rehabilitation ADA Consultants, an organization that provides comprehensive services for implementation and compliance with the ADA, sensitivity training for people with disabilities, and staff training on the ADA as a law. Hayden will discuss evaluating accessibility and ways to ensure compliance.

MPI member Bruce Jaster, president of the Jaster Companies, is also a member of the North Texas Amputee Group. Jaster, whose company specializes in planning and handling meetings and conventions geared to handicapped attendees, will review the issues to be addressed when planning meeting venues.

Co-chairs for the March meeting are Mary Lynn Novelli (Travel Resources Sterling Hotel Group), Kyle Smith (The Fairmont Hotel), Peg Wolschon (Kerrville Bus Company), Carole Sharapata (Kerrville Bus Company.), and Carolyn Taylor (Big Spur Corral).

Among the facility hosts are Ray Tackaberry, general manager, and Tomas De La Mata, director of catering and convention services.

April Host Facility

Fairmont Hotel Hosts Chapter

The Fairmont Hotel, situated at 1717 North Akard in downtown Dallas, will host the D/FW chapter of MPI April 22.

Inside the Fairmont's grand entrance, the lobby gleams with crystal chandeliers, elegant columns and marble floors. Upstairs, each room and suite is luxuriously appointed with every amenity expected by discerning travelers. Beyond its lavish facilities and quality service, the Fairmont complies with the special needs of its patrons with disabilities.

With 70,000 square feet of meeting space, the Fairmont is fully equipped to handle meeting groups from 10 to 2,500 delegates and can handle exhibitions up to 105 booths.

Business travelers are only blocks away from major banks and corporate headquarters. Nearby are the Dallas Museum of Art, Morton H. Meyerson Symphony Hall and the original Neiman Marcus department store.

Leisure time may be spent relaxing by the rooftop pool or at the Metropolitan Fitness Center adjacent to the hotel. The hotel boasts four restaurants and lounges including the Pyramid Restaurant, which features distinctive cuisine, traditional favorites and award-winning wines.

Southbound travelers on Central Expressway, exit Ross (west), turn right on Akard. The Fairmont is on the corner of Akard and Ross.

Northbound travelers on I-45 N, take Main/Elm exit. Follow signs to Elm; continue through downtown; turn right on Ervay. Ross Street is eight blocks away. The Fairmont is on the corner of Akard and Ross.

Valet and garage parking will be complimentary for MPI attendees.

C. W. Kendall has spent twenty-five years as an entertainment agent in the Dallas area. Offering the finest in live entertainment. Whatever your needs may be, C. W. and his staff of professionals will work with you to find just the right performers to fit your theme and budget. Ken Ran is dedicated to making your event a success through experience, dependability, and quality entertainment.

Ken·Ran
Entertainment
Agency

C.W.Kendall
president

349-3025



News Briefs

D/FW Chapter News

"How To" Breakfast Focuses on Tradeshows

"How to Get the Most out of a Tradeshow" was theme of last month's "How To" Breakfast. More than 30 D/FW MPI members—a record attendance for this educational series—met at Pomodoro Restaurant to learn how to improve their involvement in industry tradeshows.

Ellen Beckert, director of corporate development for The Freeman Companies, reviewed the steps involved in tradeshow exhibiting. She discussed marketing, advance show planning, sales tech-

niques and post-show follow-up and provided helpful handout on these subjects.

Susie Carr, CMP, meetings and travel coordinator for the Annuity Board of the Southern Baptist Convention, discussed how planners can make a tradeshow work to their advantage, and a number of "dos & don'ts" for both planners and suppliers while on the tradeshow floor.

Attendees agreed that the breakfast program was another example of how this year's "How To" Breakfast Series has shown great strides in quality and educational value. The group indicated much interest in the tradeshow topic as the theme for a future Executive Workshop.

The "How To" Breakfast Series is designed as an educational tool for meeting planners and suppliers interested in expanding their knowledge regarding various meeting planning functions.

"Taste of the Nation" to Benefit North Texas Food Bank

MPI member Carolyn Taylor (Big Spur Corral) encourages members of the D/FW chapter to participate in "Taste of the Nation" April 25, part of the nationwide effort to fight hunger.

All proceeds from the wine and food tasting at The Shops and Galleries of The Crescent will benefit hunger relief organizations. The Dallas Hunger Link program of the North Texas Food Bank will receive 70%.

Tickets for the 4-7 p.m. event are \$40. For more information call Taylor at 214-905-0808.

designed to provide 1993-94 chapter presidents the opportunity to visit International Headquarters, meet one-on-one with key staff, fine-tune leadership skills and network with counterparts in other chapters.

The Hyatt Regency Dallas at Reunion, sponsors of the program since inception, will again host guests at its downtown location. For the second year, Delta Air Lines will provide complimentary air travel for attendees.

N. California, British Columbia Chapters Lead National Recruitment Contest

The national Chapter Recruitment Contest brought 529 new members to MPI during the month of February.

With a total of 76 new members, the MPI Northern California chapter continues to lead the "Largest Number" category.

The British Columbia chapter leads the "Largest Percent" category with new members to date representing 20.8 percent of their February total membership.

National & International News

Chapter Presidents to Meet in Dallas in May

Incoming MPI chapter presidents will be in Dallas May 13-15 for the annual Chapter Presidents' Orientation Program.

The three-day session is

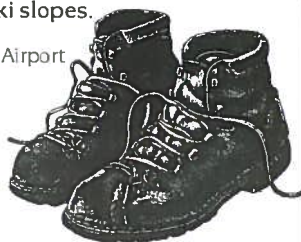
Open Supplier Enrollment Closed

MPI membership reached the 50/50 ratio of planners to suppliers during the first three months of open supplier enrollment, bringing that program to a close.

We Cater To The Upwardly Mobile

Rocky Mountain Peaks and the Pinnacle of Service. The Hilton is located in the Victorian mining town of Breckenridge just steps from the ski slopes.

- 85 miles west of Denver's Stapleton Airport
- Relaxed and elegant fine dining
- 208 deluxe hotel rooms with refrigerators, wet bars and coffee makers
- 13,500 sq. ft. of combined meeting space for groups of 10 to 200



Receive Hilton HHonors Meeting Planner Points and be eligible for a free weekend

Post Office Box 8059 • 550 Village Road • Breckenridge, CO 80424
303-453-4500 • 1-800-321-8444 • 303-825-3800 Denver Direct

Looking for a new challenge?
Seeking a qualified applicant to fill a position?

Your first stop should be

D/FW MPI's JOB BANK

Contact

Marilyn McGuire, CMP • c/o D/FW MPI Job Bank
2952 Stemmons Freeway • Dallas, TX 75247
214-637-6282

Handling Fee
\$15 Members
\$25 Non-Members

All inquiries are confidential.

'On a Dime' Executive Workshop Features Scott Murray

By Steve Parker
Affairs Extraordinaire

Local TV personality Scott Murray addressed a recent Executive Workshop on the subject of planning for non-profit events. "You can make a difference," Murray said. "When event planners such as yourselves get involved with fund-raisers, it gives you the opportunity to do something special."

More than 60 MPI members and guests attended the workshop at the Center for Community Cooperation. The luncheon was opened by Bob Hopkins, CFRE, executive director of the Texas Neurofibromatosis Foundation and national board member of National Society of Fund-Raising Executives.

Hopkins discussed how planners can assist non-profits in the development of special events when the object is to reduce expenses as much as possible and

to secure underwriting at the highest level.

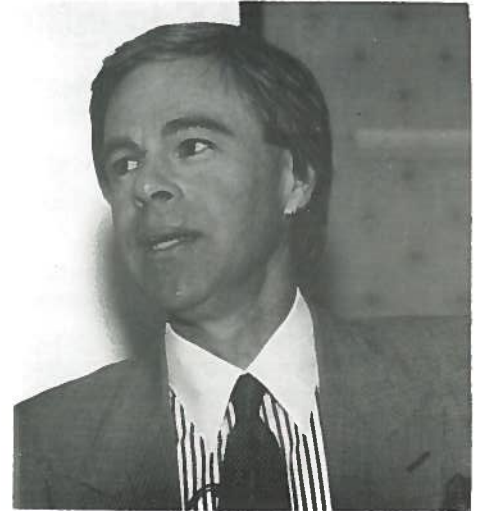
In keeping with the theme of 100% underwriting and zero expenses, all components of the event were donated by friends and members.

The luncheon was catered by **Silver Tray Catering**. The invitation was designed by **Short Productions** and printed by **Creative Press**. Even the postage was paid by the **Four Seasons National Sales Office in Dallas**.

Ducky Bob's provided the rentals and **Intercontinental National Sales Office** supplied the centerpieces. **Mark Lazarow Photography** recorded the event on film.

The event was planned by **Betty Robertson (EDS)**, who won the first prize of her life when she was the winner of the raffle supplied by **Stampede**.

The main focus from each of the two speakers was that donating planning time to non-profit special events is a "win/win" situation. Helping non-profits have



Scott Murray: "Meeting planners can make a difference!"

successful events makes one feel good and can open up doors to future business.

"The time you give of yourself to charity comes back to you ten-fold," said Murray.



The little van that can.

It can take you to the airport. It can bring you home. Any time day or night. 7 days a week. It's reliable. Comfortable. And doesn't cost much. It departs promptly and makes no more than 3 stops. So catch SuperShuttle—the little van that can and - *Take the Easy Way Out.*

Dallas/Fort Worth
(817) 329-2000

Phoenix
(602) 244-9000

Los Angeles
(310) 338-1111

San Francisco
(415) 558-8500

ExecuCar™

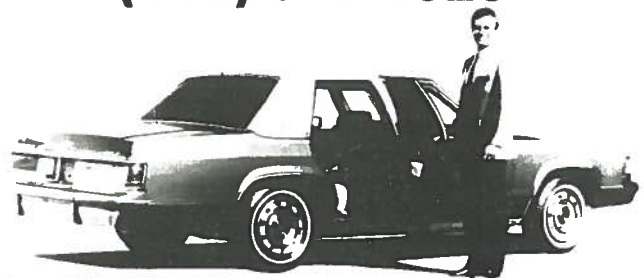
EXECUTIVE SEDAN SERVICE

A more businesslike way to be chauffeur-driven

- 24-HOUR SERVICE, 7 DAYS A WEEK
- Affordable Rates
- Professional, courteous drivers
- Major credit cards accepted
- Personalized comfort of a luxury sedan
- Airport transfers
- Local transportation
- Statewide charters

FOR RESERVATIONS OR INFORMATION

(800) 327-4020



Involvement Committee, Phone Tree Active

Participation and Attendance Increase When New Committees *Get into the Act*

By Sherri Cook, *Sherri Cook & Assoc.*
& Alice Roberts, *The Worthington Hotel*

If you've been wondering why you keep receiving reminders each month about the chapter meeting and you've been questioned about your involvement in MPI... read on!

Two new membership committees were formed this year to help you *Get into the Act*. The phone tree was reactivated to promote and boost attendance at monthly meetings and spread the goodnews about chapter educational opportunities.

The involvement committee's objective is threefold: (1) to ensure you're receiving your newsletter and phone tree calls; (2) to provide you with information on committee service opportunities and sign you up; and (3) verify that you are content with your membership and plan to renew. Both committees assist you with any other questions that you might have about MPI in general and our chapter specifically.

Since the phone tree has been calling on a regular basis, monthly meeting attendance has increased dramatically. "The increase we've seen in monthly meeting attendance can be credited, in part, to the dedication of the phone tree committee to reach all 560+ members every month and, of course, to the excellent monthly programs," said Diane Smith, CMP, vice president/ membership.

Of the 530+ members contacted by the involvement committee, 94% were content with their membership and the programs offered by the D/FW chapter. At this time, 52% of our membership is actively participating on committees. If you have not been contacted about committee participation, please contact Sherri Cook, (Sherri Cook & Associates), 214-394-8688. You may also contact any of the vice presidents or board members. Chapter committees include administration, education, finance/job bank, membership, programming and public relations.

By getting involved you help build and improve our chapter—which benefits the entire membership. Through your participation you might even be selected as Planner or Supplier of the Year and win one of the fabulous grand prizes offered for Planner, Supplier and Recruiter of the Year. You could be the

winner of the exciting "Caribbean Getaway" package previewed on this page.

The D/FW chapter appreciates you as a member. Maximize your membership benefits and *Get into the Act*.

Caribbean Getaway

Enjoy the exotic pleasures of the Caribbean island of St. Martin/St. Maarten during a three-night stay at **Mullet Bay Resort and Casino**. The getaway continues for three more nights at **Le Meridien L'Habitation** on a breathtaking bay at Anse Marcel. Enjoy European dining, duty-free shopping, and endless white sand beaches. Round-trip air transportation for two provided by **American Airlines**.



Mullet Bay
Resort & Casino

Le
MERIDIEN
L'HABITATION



American Airlines

Get into the ACT!
The reward for
MPI's
Planner of the Year
could be a
six-night
Caribbean vacation!

Go for the Gold! Recruitment Drive Standings

The top recruiter for the D/FW chapter of MPI will be the lucky winner of one of three fabulous vacation prizes—Canadian Experience, Caribbean Getaway or Total Spa Experience. Here are the standings as of 2/28/93.

RECRUITER	NEW MEMBER	RECRUITER	NEW MEMBER
Ellen J. Beckert	Patricia E. Davison	Marilyn L. McGuire, CMP	Susan E. Conley Judith H. Gausnell
J. William Boyd, CMP	Susan Muha	Jeffrey J. Means, CMP	Karen G. Young
Tracy K. Cain	Lori Evans	Charlotte Merrill-Davis	Linda C. Thornton
Sherri A. Cook	Judy Noe Myers Daryl Richardson	Mary Lynn Novelli	Harley E. Cohen
Phares Corder	Joan E. Corder	O.D. O'Donnell	Lil Arnold Nancy L. Calico Jana K. Carmichael Shelley Markowski Mike Miller
Mary W. Cowart	Jerry J. Samuels	Jennifer B. O'Loughlin	Margaret A. Dodson Susi Felch-Foliaki
Tony W. Cummins	Debbie L. Meyers Kathy K. Senese James M. Smith	Sheri A. Pappas	Nicholas A. Pappas
Robert G. Darden	Ann D. Connolly	Alice R. Riggins	Dick Glockner B. Ann Seals
Stephanie S. Davis	Kristine A. Jaeckle	Martin D. Rizzo	Wanda S. Parten
Alicia D. Duvall	Chris M. Hamilton	Alice C. Roberts	Cheryl L. Beasley Keith W. Hickman
Greg Elam	Cynthia L. Newton	Gay Robson	Elizabeth Marquardt
Gretchen R. England	James T. Belcher	Judy Love Rondeau	Sandi T. Galloway Debra A. Ryan
Lori Evans	Jennifer H. Giesler Sheryl J. Hatfield	Susanne Ruffner, CMP	Jennifer A. Hale
Susi Felch-Foliaki	Jennifer A. Wetter	Michele Sanseverino	Georgiann Decenzo
Sue Ferguson-Fry	David P. Little	Linda Sergeant-Johnson	Leo I. Bary
Barbara H. Fett	Deanna E. Bright Casey M. Cotton Victoria Mazurek	Anita O. Siegers	Elizabeth I. Murski
Diedri R. Fields	Kamrl K. Price	Marsha I. Singer	Brenda L. Crouch
Phyllis R. Firebaugh	Kate Mayer	Pat Skistimas	Linda M. Thomas
Betty E. Garrett, CMP	Jayne Polcaro	Bettie A. Smith	Kayla L. Emmons Pat Skistimas
Sally A. Gibbons	Sara J. Schlossman	Diane Smith, CMP	Mary-Therese Gnadt Janet L. Martin Lynnda J. McCoy Blake T. Robinson Karen Williams
Stanley Heller	Andrea L. Greene	Lisa A. South, CMP	Debora J. Jerman Kelly A. Kostelecky Gale Sliger
Linda D. Hill, CMP	Julann P. Boatner Elizabeth Cox	Dorrit Turner	Ingrid M. Kovacs
Becky A. Hilton	Judy A. Tatje Rebecca Whitehead	Alex Vurpillat	Karen A. Fogle John C. Johnson Melissa Z. Zimmerman
Sherry Katzenmeier	Sandra M. Lindstrom	Skip Williams	Pamela C. Clyma
Marta A. Lilly, CMP	Beverly G. Autrey	Laura Yarbrough, CMP	Barbara Derksen
Karen R. Lockhart	Cherry Sword	Richard W. York	Dean E. Conwell Lisa A. Conwell Cheryl L. Hopkins Caroline A. Thompson
Mary Jo Malone	Alma Aniebuie		
Catherine M. Mason	Annette M. Falkner Donna C. Johnson Kelli C. McGonagill		
Patricia K. McCain	Maria G. Escarfullery		
Debra E. McCurdy	Cindi L. Ghormley Donna M. Haynes Amy Hulbert-Suggs Ellen E. Noe		
	Melody A. Ray		

Heard it through the Grapevine...

By Ken Cohen
Cohen's Casino Parties

Carol Schroeder is the new regional director of sales for the central region of *Crown Sterling Suites*. Carol was formerly with Coastal Hotel Group.

Jill Simon was pictured in the *Dallas Business Journal* where it mentioned that she and Le Ann Harle have formed *Renaissance Meeting and Incentives, Inc.*, a full-service meeting management firm. Both Jill and Le Ann were formerly with Dallas Fan Fares.

Therese Colmenero has left the Doubletree Lincoln Centre and has moved to San Antonio.

Joan Corder has taken over the office of *Phares Corder Entertainment* while Phares, her father, devotes his time to playing his trumpet and fine tuning the orchestra.

Debra Laklin is now director of accounts at *Universal Trade Shows & Conventions*, a sister company of *Murray Travel*. She formerly was with Wyndham Travel.

LaDonna Cook, *Four Seasons Hotel*, and Joan Jensen, *JCPenney*, are both expecting babies on the same day, April 16.

Mabrie Griffith, *EDS*, was married January 2 to Marshall Jackson. Mabrie transferred to *EDS* in Houston where Marshall owns a business.

Deirdre Gordon, *The Kerry Company*, is excitedly anticipating a new role—in October she'll become a first-time grandmother!

Mary-Therese Gnadt, director of membership with *National Business Association*, will assume the responsibilities of the "Grapevine" column next month. Mary-Therese—better known as M.T.—helps us remember how to pronounce her last name: "It's NOT what you think!"

Ken Cohen, *Ken's Casino Parties*, has been the "Grapevine" columnist for several years. The *Current* appreciates his faithful service—and the fact that his column always arrived before deadlines!

Keep up with personal news about fellow MPI chapter members — job changes, promotions, awards or special recognitions, weddings, or births— through "Heard it through the Grapevine." Please contact Mary-Therese Gnadt (214-991-5381 or FAX 214-960-9149) about items of interest for this column.

Chapter Volunteers Lauded 'Give Kids the World' Benefit Brings Big Bucks

Despite an unexpected mid-March cold front that put a damper on the golf tournament, more than \$16,000 was raised for Give Kids the World by the D/FW MPI chapter-sponsored Sports Classic and Auction last month.

Give Kids the World, an official charity of the D/FW chapter of MPI, provides six-day, cost-free vacations to central Florida attractions for thousands of children with life-threatening illnesses and their families.

"Our chapter volunteers are known for their incredible commitment and ability to produce. Never has such commitment and ability been put more to the test than it was for the Give Kids the World benefit," said **Kim Kelley, CMP** (The Tower Club), chair of the auction committee. "The volunteers responsible deserve cheers, pats on the back, and our respect."

The golf tournament took place at Bear Creek Golf Resort. That evening participants enjoyed a party and auction at the Doubletree Hotel Lincoln Center.

Kelley called for a special "hats off" to **Charlotte Merrill-Davis** (Event Source Professionals). "Charlotte, chair of the food and beverage committee, gathered a team that planned and operated the entire party from start to finish," Kelley said. "She qualifies as a genuine hero and miracle-worker for this event."

Auction committee co-chairs **Greg Pynes** (Addison Convention & Theatre Centre) and **Rebecca Whitehead** (Festivities/Meeting Management Associates) were cited for their hard work, dedication and organizational skills.

"Rebecca and Greg worked tirelessly many hours to bring off one of the best-managed and well organized volunteer efforts this chapter has produced," Kelley said. "They made sure that each and every prize brought in big dollars for the 'Kids.'"

Other volunteers and contributions cited in Kelley's wrap-up report include:

Michelle Carter (Dallas Convention & Visitors Center) contacted her fellow CVBs in cities all over the United States to produce a multitude of excursion packages. **Mary Lynn Novelli** (Travel Resources/Sterling Hotel Group) provided a large variety of travel packages, including the grand prize (stays at the Le Baltimore in Paris and St. Andrews Old Course Hotel in Scotland, with air provided by Delta Air Lines—which netted more

than \$3,000 for the "Kids"). **Mary Lynn** also worked to coordinate prizes for the golf tournament.

Lisa Stedman (Dallas Four Season Sales Office) coordinated hotel and spa packages, producing significant dollars for our cause! **Kyle Smith** (Fairmont Hotel) came up with golf, dining and hotel packages, in addition to the promise of a free car for anyone hitting a "hole in one" at the golf course earlier in the day.

Kathi Thompson (Inn on the River) coordinated donations from area "bed & breakfasts." **Linda Hughes** (Bill Reed Decorations) brought in gift baskets and balloon bouquets. Both worked the auction at the party, too!

Cathy Mason (USMotivation) and **Mary Cain** (Texas Bundles) worked with **Jennifer O'Loughlin** (Arlington CVB) and **Diane Smith, CMP** (Alcon Labs) to make sure Fort Worth was well represented with prizes and auction items. **Mary** "brought in the clowns"—clowns to entertain at a children's party! **Diane** secured the seven-day Caribbean cruise from Princess Cruises, which brought in several thousand dollars.

Amanda Willbanks (Cooper Aerobics Center), **Marsha Singer** (Executive Connection) and **Carolyn Taylor** (Big Spur Corral and Medieval Inn) made meaningful donations of dinners, shows, and even camping equipment rental. **Pam Power** (Dallas Fan Fares) saw to it that we had sporting events tickets. **Paige Garrett** (Dal City Associates) coordinated a ranch stay.

Skip Williams (Bauer/Southam Audio Video) obtained concessions from a local printer—providing significant savings on printing of programs and forms.

Ken & Sylvia Cohen (Cohen's Casinos) provided the Wheel of Fortune and the evening's casino—including all funding for the labor. **Ken**, "a superb on-stage personality," also served as auctioneer for the casino prizes.

Lisa South, CMP (Ducky Bob's Party Rentals), **Alex Vurpillat** (Carey Transportation) and **Tim Wade** (Lennox Industries) solicited auction donations, even though they weren't on the committee. **Deborah Jerman** (Cityplace Conference Center) went "above and beyond" by tracking down dozens of last-minute donations that really made a difference.

"Thanks, too, to our many MPI members (recognized in the event program) who contributed products and services," Kelley said.

"Hard work and helping hands seem to go together in MPI," said **Charlotte-Merrill Davis**.

Her list of thank-yous includes: **Ken Cohen**—Cohen's Casino Parties; **Alice Roberts**—"my right hand"; **Carla Durant**—"my left hand"; **Ken & Linda Thornton**—Fun Factory Decorations; **Leo Berry**—Balloons to You; **Deirdre Gordon**—floral centerpieces; **The Shoppe**—band; **Krandel Newton**—The Original Butt Sketch Artist; and **Laura Orange**—Palm Readings by Laura.

"Thanks to the generosity of our chapter volunteers, many more terminally ill and medically fragile children and their families will enjoy the benefits of the Florida adventure at this critical time," said **Merrill-Davis**.

In 1986, the year Give Kids the World was initiated, 329 families were hosted. In 1993 the foundation expects to host more than 4,000 families.

QUESTION: What reaches almost 600 people monthly and increases your company's recognition among professionals in the meetings industry?

ANSWER: An advertisement in the *Current*, the newsletter that chronicles the activities of the Dallas/Fort Worth chapter of Meeting Planners International!

Don't miss this opportunity to showcase your business or service through the *Current*.

To place ads, contact **Stephanie Davis**, *Current* advertising chair, (214) 851-2016; or **Lesley Meyer**, vice-president of public relations, (214) 401-0210.

Advertise in the *Current*!



Member Profile/Kim Kelley

Board Member Kelley Has Chaired or Served on Most Every MPI Committee

By Anita Siegers
The Adolphus Hotel

As event coordinator at the Tower Club in downtown Dallas, Kim Kelley, CMP, spends her days on top of the world—at least on top of Dallas. From high atop the 48th floor of Thanksgiving Tower she orchestrates magnificent weddings, Christmas parties, cocktail receptions and dinners for club members and others.



Kim Kelley, CMP

Kim has been actively involved with the D/FW chapter of MPI since she joined in 1987. In fact, she has served on or chaired almost every committee! In between committee meetings and chapter functions Kim earned her CMP designation in 1991. She recently obtained the professional catering certification from her company, Club Corporation of America.

Her involvement with MPI is enriched by "the generosity of spirit of volunteers." Citing an example, Kim spoke of the legion of volunteers who went "above and beyond" in their service to raise more than \$16,000 for Give Kids the World, an official chapter charity (see related story in this issue of *Current*).

Kim co-chaired the auction and prize committee, which gathered more than \$20,000 worth of items for "the Kids."

"Our chapter volunteers are a hard working bunch and I'm thrilled to be associated with them," she said.

Member Profile/Alice Riggins

Board Member Riggins Sets Chapter Records in New Member Recruitment

By Anita Siegers
The Adolphus Hotel

Many MPI members came to know Alice Riggins as the dynamic manager of U.S. tourism and sales at the Dallas Convention and Visitors Bureau. After spending three years in that capacity, she set out on her own just more than a year ago.

Now Alice is president of All in One Tour Services.



Alice Riggins

A member of MPI since 1988, Alice has set chapter records for member recruitment. For the past three years, she has received top recognition for her efforts by recruiting at least 20 members each year. Alice graciously retired from the competition part of recruiting last year—in order to give others an opportunity to win!—but admits that the MPI International prizes look quite attractive!

Outside the work arena, Alice is an avid tennis player, and combines that interest with her love for travel. She has been to every Grand Slam (Wimbledon, The French Open and the U.S. Open) except the Australian Open—although she has traveled to Australia.

Boyd Candidate for President-Elect of MPI International

J. William (Bill) Boyd, CMP, a member of the D/FW chapter of Meeting Planners International, is a candidate for president-elect of the international board of directors of MPI.



Bill Boyd, CMP

Boyd, president of Sunbelt Motivation & Travel, Inc., Las Colinas, will complete two years of service on the International Board of Directors at the end of the fiscal year (June 30, 1993).

A member of MPI since 1979, Boyd has been active with the MPI D/FW chapter in a variety of leadership roles, including the chapter presidency in 1988-89.

He recently chaired the MPI Special Interest Group Task Force which studied the status of these groups within the association and made recommendations for future growth and development.

In 1989-90, he chaired the feasibility task force which resulted in the formation of the MPI Travel & Incentive Special Interest Group.

Through his work on the MPI Chapter Relations Committee, Boyd has been involved with chapter expansion and the development of chapter management forums and chapter manager workshops.

Boyd also works with the local "Love for Kids" charity, acting during the last year as the organization's financial director and a member of its executive committee.

MPI

MEETING PLANNERS INTERNATIONAL®

March Meeting Highlights

D/FW MPI Enjoys Cowtown Hospitality!

Thanks to these contributors!

Affairs Extraordinaire, Inc.	\$875
Abbey Rents	\$400
AVW Audio-Visual	\$250
Ben E. Keith	\$60
Billy Bob's	\$180
Pam Burchill Duo	\$375
Century II Club	\$7500
Freeman Decorating	\$500
Fort Worth CVB	\$110
Inn on the River	\$300
Kerrville Bus Company	\$1000
Loews Anatole	\$60
Margaritas-R-Us	\$60
Radisson Plaza Hotel, FW	\$80
Stockyards Station	\$450
Worthington Hotel	\$200
Speaker Fees	(variable)



Fort Worth Mayor Kay Granger proclaimed March 25 "MPI Day" to coincide with the D/FW chapter's annual Cowtown meeting. Co-chairs for the meeting at Century II Club were **Peg Wolschon** (Kerrville Bus Co.), **Dave Gisler** (Freeman Decorating), **Kathi Thompson** (Inn on the River), **Sherri Cook** (Sherri Cook & Associates), **Steve Parker** (Affairs Extraordinaire), and **Robin Wharton** (Century II Club).

"The generous contributions of our members and peers are invaluable in the production of our monthly meetings," said Sherri Cook. "More than \$15,000 worth of products and services were donated for the March meeting. Please help us thank these sponsors by keeping them in mind when you have the opportunity to utilize their services." (See list of contributors elsewhere on this page.)



A trio of outstanding public speakers addressed the March meeting of MPI. Dallas radio listeners know **Susie Humphreys** (left) as the unpredictable suburban career woman, wife and mother who lends humor and a slice of life to Ron Chapman's morning show on KVIL. She did the same for MPI in a moving address, humorously admonishing listeners to be grateful for blessings in "It's All How You Look at It!" San Antonio CPA **Ed Robinson** (center) discussed new ways to communicate and capitalize on different cultures to enhance business and personal relationships in his address on "Diversity." **Howard Putnam** (right) an entrepreneur who "learned about crisis management by living it," is a former CEO of Southwest Airlines and, later, of the failing Braniff Airlines. Putnam's address was entitled "Leadership Through Turbulent Times."



Doug Harman (Fort Worth CVB) gives a big Cowtown welcome to MPI. Harman (in the cowboy hat) gave special recognition to new members and their recruiters, then distributed Fort Worth/Cowtown bandanas to all attendees.



Ever the spontaneous clown, guest speaker **Susie Humphreys** makes everyone laugh—including v.p./education **Sue Ferguson-Fry**—after Fry (Cityplace Conference Center) presented Humphreys with a plaque of appreciation that came apart at the handover.



OFFICER NOMINEES

LEFT: Eleven of 21 candidates for officers and board members to lead the D/FW chapter of MPI in 1993-94 gather at the Century II Club. Candidates named by the nominating committee include, left to right, **Lesley Meyer, CMP** (Sunbelt Motivation & Travel, Inc.), president; **Sue Ferguson-Fry** (Cityplace Conference Center), vice president (v.p.)/programs; **Sherri Cook** (Sherri Cook & Associates), board member/planner; **O.D. O'Donnell** (Nightlife Talent & Management Agency), v.p./membership; **Charlotte Merrill-Davis** (Event Source Professionals, Inc.), board member/supplier; **Kim Kelley, CMP** (The Tower Club), v.p./administration; **Mary Cowart** (Mary Cowart & Associates), immediate past president; **Carolyn Carey, CMP** (Fidelity Union Life Insurance Co.), v.p./finance; **Dorrit Turner** (Yellow Rose Touring Co.), board member/supplier; **Steve Kemble** (Steve Kemble Event Design), v.p./public relations; and **Diane Smith, CMP** (Alcon Labs), president-elect.

Candidates not pictured are Michelle Carter (Dallas CVB), v.p./education; Paige Garrett (DalCity Associates, Inc.), board member/planner; Cathy Mason (USMotivation), board member/planner; Phyllis Tackitt (Voluntary Hospitals of America), board member/planner; Alexandra Vurpillat (Carey Limousines, Inc.), board member/planner; Rebecca Whitehead (Meeting Management Associates), board member/planner; Pat McCain (Texas Bundles), board member/supplier; Mary Lynn Novelli (Travel Resources Sterling Hotel Group), board member/supplier; Linda Sargeant (Bill Reed Decorations, inc.), board member/supplier; and Patricia Tripp, CMP (Princess Cruises & Tours), board member/supplier.

Lisa South (Ducky Bob's Party Rentals), chair of the nominating committee, announced that election of officers will be by mail. Ballots mailed to 540+ MPI members April 10 must be returned by April 25. Members are asked to vote for four of the five nominees in each category (planner and supplier) for members of the board of directors.

RIGHT: A greeting by lariat roping professional **Ken Durham** was just one of many ways the Fort Worth Convention & Visitors Bureau went "all out" to welcome MPI to Cowtown. Personnel from the city's CVB also directed "pre" and "post" tours of downtown and the Stockyards area.



**Photos by
Mark Lazarov
Photography**

MPI

MEETING PLANNERS INTERNATIONAL®

Dallas/Fort Worth Chapter
10935 Estate Lane
Suite 400
Dallas, Texas 75238
214-343-0555

Meeting Planners International is the world's largest association of meetings professionals with more than 11,000 members in 35 countries and 46 chapters. MPI's mission is to provide educational opportunities and recognition for those in the meetings industry. The association is committed to excellence in meetings, continuous international growth, research, a strong chapter network and high ethical standards.

Current Editor
Gracie Hatfield Hilton
The Write Stuff
Phone & FAX
metro 817-467-7439

President

Mary W. Cowart
Mary Cowart Meeting Consultants
214-248-4429

Vice President/Membership

Diane Smith, CMP
Alcon Laboratories, Inc.
817-551-8077

Vice President/Education

Sue Ferguson-Fry
Cityplace Conference Center
214-841-6830

Vice President/Administration

O.D. O'Donnell
Nightlife Talent & Mgt. Agency
214-691-4417

Vice President/Finance

Alan L. Powdermaker
Circle R Ranch
214-430-1561

Vice President/Public Relations

Lesley Meyer, CMP
Sunbelt Motivation & Travel, Inc.
214-401-0210

Immediate Past President

Lisa A. South, CMP
Ducky-Bob's Party Rentals
214-702-8000

Board of Directors

Carolyn Carey
*Fidelity Union
Life Insurance Co.*
214-978-7119

Paige Garrett
DalCity Associates, Inc.
214-233-9070

Kim Kelley, CMP
The Tower Club
214-220-0403

Tim Wade
Lennox Industries
214-497-5000

Alice R. Riggins
All-In-One Tour Services
214-721-0332

Alexandra Vurpillat
Carey Limousines, Inc.
214-683-4828

MPI Nat'l Headquarters

INFOMART
1950 Stemmons
Suite 5018
Dallas, Texas 75207-3109
214-712-7700

MPI

MEETING PLANNERS INTERNATIONAL®

Dallas/Fort Worth Chapter
10935 Estate Lane • Suite 400
Dallas, Texas 75238




DALLAS/FORT WORTH CHAPTER