

MPI

MEETING PROFESSIONALS INTERNATIONAL®

CURRENT

Meeting Professionals International

November 1995

Dallas-Fort Worth Chapter

President's Message

PEC Brings Top Meeting Professionals to Dallas

By Phyllis Firebaugh, CMP
Krisam Group

With our commitment to excellence in educational offerings, the PEC will be the premier opportunity this year! Every member of the D/FW Chapter can benefit from the upcoming Professional Education Conference (PEC) scheduled in Dallas, December 10-12.



Phyllis Firebaugh, CMP
D/FW Chapter President

The 1995 conference, entitled "Elevating Meetings to Achieve the Bottom Line," offers more than 70 educational workshops addressing technological topics to legal issues.

Top names in the meeting industry will discuss cutting-edge concepts which empower attendees with the abilities to enhance meetings management skills, document success, maximize return on investment (ROI), and be recognized as an integral part of a management team.

Dallas has a commitment to make it the best-ever PEC and peers from all over the country are calling and sending messages of how eager they are to come to Dallas. As always, your contributions will leave them "wowed!"

Especially now, we need your . . .

MPI

MEETING PROFESSIONALS INTERNATIONAL®

November D/FW Chapter Meeting

"Shake, Rattle & Roll"

Creating Ambience, Fun &
Excitement at Meetings

Thursday, November 16

Embassy Suites Dallas Park Central

13131 N. Central Expressway
Dallas, Texas 75243
214-234-3300

Orientation 5:30 p.m. Park View Room
Reception & Registration 6:00 p.m. Perch Breakout Room
Dinner & Program 7:00 p.m. Regency Ballroom

R.S.V.P. to Joe
by noon, Tuesday, Nov. 14
214-774-1404

Advance Registration \$26
Late Registration \$35
Guest Registration \$30

See page 3 for more details and meeting reservation policy.

INSIDE

November Meeting Info

3

Last Month's Meeting

10

Surfin' the MPINet

5

Membership News

14

Opinion, Please

7

"Texas Cookin'"

16

Education News

8

Planner of the Year: Kemble

17

CURRENT

MPI

MEETING PROFESSIONALS INTERNATIONAL®

Dallas/Fort Worth Chapter

Newsletter Staff

Editor

Gracie Hatfield Hilton
The Write Stuff
Phone & FAX
metro 817-467-7439
e-mail: 75647.22@compuserve.com

Vice President/Public Relations

Dana Nickerson, CMP
Square One Productions
214-343-8067
FAX: 214-343-6166

Advertising Chair

Kristi Hollomon
J&S Audio Visual, Inc.
214-241-5444
FAX: 214-247-2590

Photographer

Mark Lazarow
Mark Lazarow Photography
214-380-0985
FAX: 214-380-1431

MISSION STATEMENT

MEETING PROFESSIONALS INTERNATIONAL
Meeting Professionals International is the pivotal force in positioning meetings as a primary communication vehicle and a critical component of an organization's success. Meeting Professionals International leads the meetings industry by serving the diverse needs of all people with a direct interest in the outcome of meetings, educating and preparing members for both their changing roles and validating relevant knowledge and skills, as well as demonstrating a commitment to excellence in meetings.

The *CURRENT* is published 12 times yearly for the D/FW Chapter of Meeting Professionals International, the industry's leading educational and networking resource in meetings management. Statements of fact and opinion are the responsibility of individual writers and do not imply collective opinion of the officers or members of MPI.

Upcoming MPI Events

CHAPTER MEETINGS

November 16, Thursday
Chapter Meeting
6:00 p.m./Dinner
Embassy Suites Park Central
"Music in Meetings"

December 21, Thursday
Chapter Meeting
Holiday Party
Omni Mandalay

1996

January 25, Thursday
Chapter Meeting

February 29, Thursday
Chapter Meeting

March 28, Thursday
Chapter Meeting

April 25, Thursday
Chapter Meeting

May 23, Thursday
Chapter Meeting
Annual Awards Banquet

June 27, Thursday
Chapter Meeting

EDUCATIONAL OPPORTUNITIES

December 9, Saturday
CMP Exam
Wyndham Anatole Hotel
Dallas

December 6
"How To" Breakfast
Venue TBA
"Budgeting"
7:30-9:30 a.m.

December 10-12
'95 Professional Education
Conference/North America
Dallas

*NOTE: Chapter meeting plans are subject to change.
Check the CURRENT each month to confirm details.*

For more information about association events, call MPI Headquarters, 214-712-7700.

Upcoming Events • Related Organizations

NACE

December 21
Omni Mandalay
Holiday Party w/MPI

November Meeting Highlights

'Shake, Rattle & Roll'—Creating Ambience, Fun and Excitement at Meetings

By O.D. O'Donnell
Nightlife Talent & Mgt. Agency

When it's your responsibility to plan a meeting or event, it's only natural to want the function to be interesting, educational, well attended and memorable.

With that in mind, the MPI D/FW Chapter's November 16 dinner meeting at Embassy Suites Dallas Park Central will provide some ideas on how to use two of the most popular forms of entertainment—music and comedy.

After the cocktail reception which will feature several forms of entertainment, the dinner meeting will feature "4 Out Of 5 Doctors," a Dallas comedy team—plus music by "The Briefcase Blues Band."

Want to "Shake, Rattle and Roll"? Stick around after the meeting! "The Briefcase Blues Band" promises more music for your dancing enjoyment!

Because of space, reservations will be limited to 248, so be sure and RSVP early



The Briefcase Blues Band

Meeting Reservation & Attendance Policy

Registration fees will be collected at the door; advance payments are not accepted. If paying by check, please have check completed before approaching registration table. Reservations must be made by RSVP deadline for advance registration fee to apply. Late reservations and walk-ins will be accepted on a SPACE AVAILABLE basis. Cancellations must be made by the RSVP deadline. **No-shows will be billed.** Members are responsible for "no-show" charges for their guests. Guests are limited to attending three meetings per year (spouses are an exception).

for this program—one that's guaranteed to be both educational and enjoyable.

New member orientation will begin at 5:30 p.m. in the Park View Room. Registration is at 6:00 p.m. in the Perch Break-out Room. Dinner will be served at 7:00 p.m. with the program in the Regency Ballroom.

Continuing Education Unit (CEU) credit forms will be available.

November committee members are, O.D. O'Donnell, (Nightlife Talent & Management), Esther Wigley, CAS (Appointments Promotional Advertising) and Alaina Webb (Meeting Management Association/Festivities)



4 out of 5 Doctors—a/Dallas comedy team

November Host Facility

Embassy Suites Dallas Park Central

Embassy Suites Hotel in the Dallas Park Central area, host facility for the November chapter meeting of the D/FW chapter of MPI, offers the luxury of a suite to each guest.

Embassy Suites Dallas Park Central ranks first place in the "best value" category among Dallas hotels, according to the 1995 Zagat poll.

The full service hotel features 10,000 square feet of flexible meeting space, catering, audio visual services, and a nine-story glass-enclosed tropical atrium, complete with gazebo.

Each of the 279 sites is fully equipped with a refrigerator, microwave and coffee maker.

Rates include a cooked-to-order complimentary buffet breakfast and a two-hour complimentary cocktail reception daily.

Other complimentary amenities include racquetball courts, indoor pool/sauna area, an exercise facility, gift shop, Austin's Bar and the Park City Restaurant.

Situated at the intersection of Central Expressway and LBJ Freeway (physically on Central Expressway), Embassy Suites Dallas Park Central is accessible to all major highways and local airports. On-site parking is complimentary.

Editor's Notes

CURRENTly . . .

Effective last month, our chapter is under the management of Don Dillon and Associates. The Dillon staff—under the direction of Executive Secretary Joe Kolb—will, among other duties, supervise mailout of the *CURRENT* and handle monthly meeting reservations.



Gracie H. Hilton
The Write Stuff
CURRENT Editor

Imagine Joe's chagrin when last month's *CURRENT* had the wrong RSVP number in the information/invitation box about the October meeting on page one.

The updated information—new office address, phone number, FAX number and e-mail address was in last month's newsletter—in several spots through the 20-page newsletter—but *not in the RSVP spot*.

Ever heard of "baptism by fire"?

Joe and others in this new office management system got into "high gear" and produced and affixed stickers, correcting my error.

My sincere apologies, Joe! And thanks for coming to the rescue quickly and cheerfully!

Be sure to introduce yourself to Joe at the November meeting—and join me in saying "thanks!"

The '95 **Professional Education Conference** (PEC) — is just around the corner! Dallas and the D/FW Chapter will host one of MPI's largest conferences **Dec. 10-12** at the **Wyndham Anatole Hotel**. PEC '95 will be the first big MPI meeting in Dallas since 1979, and the Host Committee is counting on the D/FW Chapter to help make the PEC in Dallas the best yet. See page 8 for more information about PEC '95.

Preceding the PEC is the **Chapter Management Forum** on Saturday, **Dec. 9**. Read all about it on page 14.

The *CURRENT* welcomes new feature writer **David Erkel**, general manager of International Meeting Management Services. See his feature on **Steve Kemble** (Steve Kemble Event Design), the D/FW Chapter's Planner of the Year, on page 17. Erkel's next feature writing assignment is a profile of Supplier of the Year **Colleen Albert-Rickenbacher** (Dallas CVB).

We recently bid a reluctant goodbye to D/FW Chapter activist **Cathy Mason** (BTI Americas), who has moved to the Chicago area. Mason is eager to keep in touch with MPI friends. Here's how: BTI Americas, 400 Skokie Blvd., Northbrook, IL 60062-2887, phone: 708-205-3600, FAX: 708-480-3025.

Be aware that this month's meeting is a week "earlier than usual" because Thanksgiving falls on our usual fourth Thursday meeting date. Mark your calendar for the **Nov. 16 dinner meeting at Embassy Suites Dallas Park Central**.

—ghh ☺

CURRENT Deadlines

Upcoming deadlines for copy and ads for the D/FW Chapter of MPI newsletter, the *CURRENT* —

ISSUE	DEADLINE
Dec. '95	Nov. 10, Friday
Jan. '96	Dec. 15, Friday
Feb. '96	Jan. 19, Friday

Copy is cheerfully accepted early. *Because of production schedules, information received after the deadline day will not be included in the newsletter in progress.*

Late-arriving copy will be included in the next month's issue, if information is still timely.

Please mail 3.5 disk, Windows format—preferably in Microsoft Word or WordPerfect—to Gracie H. Hilton (The Write Stuff), *CURRENT* editor, 3020 Glasgow Court, Arlington, TX 76015 or send copy via CompuServe: 75647,22.

MPI

MEETING PROFESSIONALS INTERNATIONAL®

The new chapter office address is:

Dallas/Fort Worth Chapter of MPI

4020 McEwen • Suite 105
Dallas Texas 75244

214-774-1404

FAX 214-490-4219

Joe Kolb, Executive Secretary

E-Mail:

74742,1725 (CompuServe)

or

INTERNET:74742.1725@compuserve.com

RAINBOW ENTERTAINMENT

Specializing In:

Bookings ★ Special Events ★ Promotions

Featuring

- ★ Comedians ★ Hypnotists ★ Magicians ★
- ★ Bands ★ Specialty Acts ★ Karaoke ★
- ★ Co-op Promotions ★ Contests ★ Fund-Raisers ★
- ★ Kids Entertainment ★ Animal Acts ★

RICHARD S. POLLAK
Consultant

11311 Audelia, Suite 248
Dallas, TX 75243
(214) 503-1220

It's not too early to book Christmas entertainment now!



Linda Sergeant

Surfin' the MPINet Highway

By Linda Sergeant (Bill Reed Decorations)

This column explores MPINet, the first global online communications system designed specifically for the meetings industry.



Is there a spell check for MPINet?

Yes, thank goodness! You can download spell check software from CompuServe. Your account will be billed \$20.00. **GO: ASPPELL.** Thereafter, your message screen will have a "spell" button; click on it to check the spelling of your messages.



Who is using Internet?

I'm curious to know if other chapter members are online through other services. If so, would you like to have your electronic address posted here? If you are presently online with CompuServe, America On Line, Prodigy or have an Internet address and would like to be included in the MPI D/FW Chapter "Surfing" club, <g>, please e-mail me!



May we see some examples of what people actually post?

Subj: E-Honk if you know me Section: Welcome to MPINet
To: All Wednesday, October 11, 1995 11:56:31 AM
From: Neil R. Cramer, 74161,1057 #48356

Hope I'm doing this right.
Hi, I'm Neil Cramer, Director of Sales, at Sonoma Mission Inn & Spa, located in the California Wine Country about an hour north of San Francisco.
Hope to get more involved as I figure out how to navigate around. Later.

Subj: Summer Site for 2,500+ Section: Locales/Facilities
To: All Wednesday, October 04, 1995 10:33:05 AM
From: Martha Zeiher, 74117,677 #47824

I am looking for sites for the Kinko's Annual Convention for the years 1997, 1999, and 2000. I have contacted everyone I can think of in the major chains, etc. and am wondering if I've missed anyone out there. Here are the specs (very generally)
1. Dates have to be after the 15th of June and before 15th of July.
2. Attendance numbers start at 2,500 and go up 15% a year from there.
3. We have a high need for shared rooms (double/double or equiv.)
4. We need a space for a 40,000 sf exhibit show
5. We need space for a general session, theater style-rear screen projection for 2,500+, plus other break out needs
6. We need a location for an all day picnic within 30 minutes of hotel(s)
7. We traditionally have been in resort areas
8. We are not looking at Orlando, Hawaii, or outside the U.S. at this time (except for Canada)
Please send any suggestions VIA MAIL please!
Martha Zeiher, Corporate Meeting Planner, Kinko's, Inc.

Subj: Summer Site for 2,500+ Section: Locales/Facilities
To: Martha Zeiher,74117,677 Thursday, October 05, 1995 1:23:16 AM
From: Lisa Snow, 74161,701 #47904

Hi Martha,
City excitement in a ten gallon hat — Calgary would be an ideal site for your annual convention.
During the first week of July the Calgary Stampede (The Greatest Outdoor Show on Earth) is a fantastic attraction, additionally this would be an ideal pre/post. The region offers so many possibilities (located within close proximity of the Foothills and Rocky Mountains etc.) , I would be delighted to fax you details on the region, suggested activities etc..
Lisa Snow - Hooked on Adventure

D/FW Chapter "Netters"

As this issue of CURRENT goes to press, D/FW Chapter members among MPINet subscribers include:

- Ellen Beckert** (The Freeman Companies) 74117,244
- Bill Boyd, CMP** (Sunbelt Motivation & Travel, Inc.) 73164,2013
- Inga Bowyer** (ROI Meetings and Events, Inc.) 74161,114
- Sherri Cook, CMP** (Sherri Cook and Associates) 74161,534
- Greg Elam** (Dallas CVB) 74117,706
- Barbara Fett** 74117,654
- Phyllis Firebaugh, CMP** (Krisam Group) 74161,645
- Jim Follett, CHSE** (InterContinental and Forum Hotels) 74117,545
- Steve Foster** (Yellow Rose and Touring) 74161,523
- Betty Garrett, CMP** (Garrett Speakers International) 74117,157
- M.T. Gnad** (Independent Planner) 74161,732
- Sally Goldsberry, CMP** (Meetings & Exhibits Specialist:)74117,121
- Gracie Hilton** (The Write Stuff) 75647,22
- Pat McCain, CMP** (Krisam Group) 74161,360
- Debbie Meyers** (Bravo! Entertainment) 74161,334
- Jim Monroe** (Gale Sliger Productions) 74117,745
- Dana Nickerson, CMP** (Square One Productions) 74161,1027
- Mary Lynn Novelli** (Sterling Hotels & Resorts) 72643,2175
- Darla Ogle** (HyperGraphics Corporation) 74642,1064
- Virginia Paxton** (Ginny's Gifts) 74161,410
- Lodi Palmer, CMP** (Meeting Professionals International) 74117,751
- Jan Pollard** (Omni Hotels Nat'l Sales Office) 102706,3435
- Greg Pynes** (Town of Addison) 74117,702
- Amy Redfearn** (Meeting Professionals International) 72662,3505
- Sal Sessa** (Events Photography) 102163,2330
- Linda Sergeant** (Bill Reed Decorations, Inc.) 74117,705
- Tracey Smith** (Computer Language Research) 74161,540
- Marsha Veach** (Meeting Professionals International) 74117,314
- Bob Walker** (AVW:)74117,644
- Mollie Wallace, CMP** (Miller-Freeman) 73422,3300

Do you have questions you would like to see answered in this column? Please contact Linda Sergeant (Bill Reed Decorations, Inc.), 333 First Ave. Dallas, TX, 75226; FAX: 214-823-3191; CompuServe address: 74117,705.

INTRODUCING SOUTHFORK
RANCH-STYLE CUISINE

*"A Taste of Elegance
- A Touch of Texas"*

*If you thought we just offered BBQ -
Guess again! We also
specialize in Served Dinners
from 10 - 1,000 and cheerfully customize!*

*This sample menu is only one of the many
exciting new selections available for those
wishing to host their next VIP event in a
unique environment with an exceptional
level of culinary excellence.*

**Crawfish Stuffed Eggplant Tortilla
with Tomatillo Sauce**

**Sweet Potato Soup
with Smoked Poblano Chile
accented with Blue and Gold Tortilla Strips**

**Red Chili Encrusted Scallops & Mango
Tortilla Salad
served with an Orange Vinaigrette**

**Filet Mignon, Encrusted with Red Chile
and accompanied with
Wild Mushrooms and Ancho Sauce
Garlic Whipped Potatoes
Black Bean Chili
Assorted Rolls and Butter**

Godiva Soufflé

*Prices range from \$23.95 to \$56.95 (++)
depending upon menu selected.*

**CALL TODAY! SPECIAL VALUE DATES ARE
AVAILABLE FOR SUMMER!**

SouthFork
RANCH

EVENT & CONFERENCE CENTER

Call today
for information!
(214) 442-7800

Thanksgiving Reflections

By Phyllis Firebaugh, CMP (Krisam Group)
President, D/FW Chapter, MPI

"Oh Lord, that lends me life, Lend me a heart
replete with thankfulness."—William Shakespeare.

Thanksgiving is a time for reflection and expressing thanks for all our blessings. I hope each of you have a wonderful time of celebration with your families or friends and reflect on this year's blessings.

A few that we, as a chapter, can appreciate are a healthy business environment in which to work and network; unique opportunities to participate in our Professional Education Conference to be held in Dallas next month; and varied educational programs reaching out to meet needs you expressed to us.

The PO⁴Ds are designed to meet needs of members who are unable to attend chapter meetings each month and still want valuable programs plus an opportunity to network with peers. The good news is you also have the privilege to influence programming in your neighborhood group so you can learn about topics in which you have the greatest interest. And get acquainted with new contacts who just may be a goldmine to you!

A real bonus, for which I am particularly thankful, is the videotaping of each of our monthly programs so that they can be used at the PO⁴D programs, if desired, or any other educational format. We are so grateful to Mark Lazarow (Mark Lazarow Photography) and his partner, Ron Long, with their new company called RONMARK, INC. for providing this valuable service! Please contact me if you are interested in using these videos.

We have worked very hard behind the scenes to present Dallas at its best for our industry professionals to experience when they all gather here December 10-12. This is our final call to you to find a place where you can contribute if you haven't yet and put on our big smiles and make everyone feel especially welcome in Dallas! Make the most of this special opportunity and reap exciting rewards!

One of my biggest blessings for which I am so thankful this year, is the steadfastness of so many volunteers who work like a second job to bring benefits to each of us on an ongoing basis. Outstanding examples are Gracie Hilton (The Write Stuff) for our award-winning newsletter; officers, board members and committee chairs who are so committed to excellence in their respective areas of leadership; and all of you valuable members who contribute time and talent to committees to make the D/FW Chapter the leader that it is!

Please accept my expression of thankfulness to you for all your contributions to our *Commitment to Excellence*.



Out of a job?

*Looking for a
new challenge?*

*Seeking a qualified
applicant to fill a
position?*

*Check out
D/FW MPI's Job Bank!*

To list your resume
with the Job Bank, send

- a note specifying your interest (hospitality/sales, hospitality/operations, meeting planning, temporary/contract work or internships)
- a minimum of five (5) resumes per interest category
- a check or money order for \$20 (for MPI D/FW chapter members) or \$30 (for non-members) made payable to MPI D/FW Chapter

Send these items to:

Traci Bower
Chair, D/FW MPI Job Bank
P.O. Box 741208
Dallas, TX 75374-1208

Job Bank Phone Line:
214-868-2908

All inquiries are confidential.

D/FW MPI's
**JOB
BANK**

MPI

MEETING PROFESSIONALS INTERNATIONAL®

Membership Benefits

*Why do MPI members—12,000 internationally, and
approximately 600 in the D/FW Chapter—renew every year?*

✓ Publications

- Meeting Manager (I)
- D/FW Chapter Newsletter—CURRENT (C)
- MPI Express (I)
- International Directory (I)
- Local Chapter Directory (C)

✓ Continuing Education

- Annual Meetings: PEC, Annual Conference, and Institutes I & II (I)
- CMP Courses: University and Informal Study Courses (C)
- "How To" Breakfasts (C)
- Brown Bag Lunches (C)
- Richland College Courses (C)
- "Walk A Mile In My Shoes" Hands-On-Training (C)
- Monthly Meetings
- Special Interest Groups (C)
- Executive Workshops (C)

✓ Networking

- Monthly Meetings (C)
- Committee Involvement (C)
- Gemelli Chapter (C)
- MPINet (I)
- Buddy Program (C)
- Information Exchange (I&C)
- Diverse Marketing (I&C)
- Industry Trends (I&C)
- Business Opportunities (I&C)
- Business Relationships (I&C)
- Peer Interaction (I&C)

✓ Career Assistance

- Job Bank (C)
- Scholarship Opportunities (C)
- Unemployed Meeting Assistance (C)

✓ Marketing Your Product/Service

- Mailing Labels for Purchase (I&C)
- Advertising in Publications (I&C)

✓ Professional Growth

- Local Chapter and International Level Awards (I&C)
- Community Activities (C)
- Monthly Meetings (C)
- State of the Art Meeting Industry Software and Tapes (I)
- Discounts on Credit Cards, Car Rentals, Insurance, Hotel & Shipping (I)
- PGA—Professional Growth Awards (C)
- Committee Involvement (I&C)

✓ Research Information

- Governmental Affairs (I&C)
- Resource Center (I)
- MPINet (I)
- MPI Foundation (I)
- Government Liaison—Legislative Action (I&C)

Benefit Keys (I) MPI International (C) DFW MPI Chapter

EDUCATION NEWS

Professional Growth Awards
provide educational scholarship
assistance for
D/FW Chapter members.



Help support
the PGA—and
maybe win a fun
prize!—by
purchasing
tickets at
each monthly
meeting.
Tickets are
\$1 each, or
6 for \$5.

For more information contact
PGA Chair Sheryl Kuhn (Harvey Home Office),
214-788-0001 · FAX 214-687-0357

Whitney, Gibbons Co-Chairs of 1995 PEC-North America

MPI D/FW Chapter members Dave Whitney (Dallas Convention & Visitors Bureau) and Sally Gibbons (Wyndham Anatole Hotel) are co-chairs for the association's 1995 Professional Education Conference-North America, December 10-12 in Dallas.

Whitney is president & CEO of the Dallas CVB. With more than 20 years of experience in the hospitality industry, he is active in a number of organizations, including MPI, IACVB, ASAE and PCMA. As the Dallas CVB's chief executive, Whitney has seen convention sales exceed one million new future room nights sold in

each of the past two years.

Since 1990, Sally Gibbons has served as director of marketing for the Wyndham Anatole Hotel (formerly Loews Anatole). She has 20 years of hospitality experience and has been involved with MPI at both the international and chapter levels. Her association service includes a seat on the MPI Board of Directors, as well as chairing the Marketing and Membership Committees. Gibbons has served as D/FW Chapter president and was honored in 1985 as the chapter's "Supplier of the Year."

Other PEC Host Committee members preparing for the December conference are Michael Darst, CMP (Wyndham Anatole), Ellen Beckert (Freeman), Lesley Meyer, CMP (Sunbelt Motivation & Travel, Inc.), Alan Powdermaker (Circle R Ranch), Ron Trammell (Mary Kay Cosmetics), Greg Elam (Dallas CVB) and Colleen Albert Rickenbacher, CMP (Dallas CVB).

The purpose of PEC-North America is to provide MPI members with opportunities to further professional development through superior educational programming, timely and topical communication, extensive resources and peer interaction.

meetings
ELEVATING
to achieve the bottom line.

1995 PROFESSIONAL EDUCATION

CONFERENCE—NORTH AMERICA

DECEMBER 10-12, 1995

WYNDHAM ANATOLE HOTEL

DALLAS, TEXAS

- Two General Sessions
- 75 Workshops
- Unique Networking Forums
- Five Learning Tracks

For more information and
registration materials,
call 1-214-712-7730.

MPI

MEETING PROFESSIONALS INTERNATIONAL®

Committed to Educational Leadership

**1995
PEC-North
America
Co-Chairs**



Dave Whitney
Dallas CVB



Sally Gibbons
Wyndham Anatole

#6 PO⁴Dners Seek Professional Education

During September and October all ten chapter PO⁴Ds—Professional Opportunity for Development groups—met for the first time.

Here is a report from PO⁴D #6, which met recently at Dallas Park Central Hotel. It was the second meeting of this group of PO⁴Dners. Facilitator is O.D. O'Donnell (Nightlife Talent & Management). Co-chairs are Tony W. Cummins (Dallas Park Central Hotel) and Fred Knieberg, CMP.

Discussion among this group of planners and suppliers indicated that PO⁴D #6 considers educational resources MPI's most valuable membership benefit. They agreed that a small group was more conducive toward productive learning and the lunch time environment less demanding on everyone's valuable time.

PO⁴D #6 expressed interest in structured educational sessions as well as roundtable discussions and workshops.

The November meeting of PO⁴D #6 will take place at the International Offices of MPI. The group will explore the MPI Resource Center.

PO⁴D #6 Attendees

O.D. O'Donnell,
Nightlife Talent and Management Agency
Tony W. Cummins, Dallas Park Central Hotel
Fred H. Knieberg, CMP
Kristi Pennington, Dallas Park Central Hotel
Jonna Moody, Dallas Park Central Hotel
Frances Booker, Fiesta Americana Hoteles
Melanie Weaver, Sheraton Park Central Hotel
John V. Dupes, Interstate Batteries
Rose Duff, American Contractors
Insurance Group, Inc.
Sandra Dingle, Party Service
Dan Hughes, Personal Computer Rentals
Janis Shaffer, Dallas Chapter of CPAs
Maria Escarfullery, Fiesta Americana Hoteles
Donna J. Schott, Travel King
Donna Silverman, Sheraton Park Central (guest)

PO⁴D Corner



Professional
Opportunity for
Development

PO⁴Den me, Ma'am— Can You Point Me to My PO⁴D?

By Diane Smith, CMP
Alcon Labs

Professional Opportunity for Development (PO⁴D for short) is the D/FW Chapter's answer to this question: "How can we develop and deliver our chapter's educational mission to almost 600 members spread throughout the Dallas/Fort Worth metroplex?"



Diane Smith, CMP
Alcon Labs

In a survey conducted by the Board of Directors, the most frequent response was a request for "member involved" education programs. The respondents asked for a program that met these criteria: variety, plus ease of time, distance and cost. Many members emphasized concern about time away from their offices to attend chapter functions.

A task force divided the metroplex into ten PO⁴Ds. Your personal PO⁴D is determined by your zip code as listed in the chapter directory.

While we encourage everyone to take advantage of the outstanding monthly programs, we understand that you just can't do it all! So, the PO⁴Ds allow you and your "PO⁴Dners" to meet and discuss pertinent topics at a location determined by you, at a price you can afford—free!

The PO⁴Ds will provide the opportunity to get the education you need and "network with your neighbors" at the same time.

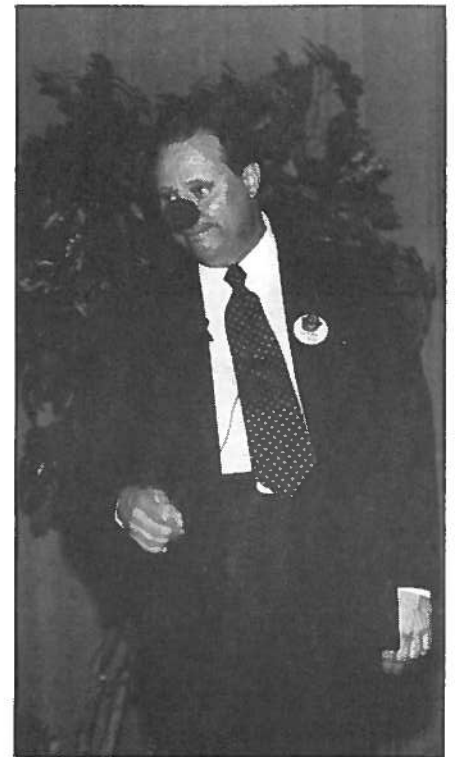
That's it! Fairly simple and straightforward, right? If you haven't already attended a PO⁴D meeting, I encourage you to contact your "PO⁴Desta" (PO⁴D chairperson) and find out when and where your next PO⁴D meeting will occur.

If you don't know your chairperson, just contact Joe Kolb at our D/FW Chapter office, 214/774-1404 and he'll be glad to point you in the right direction!

Next month, look for more information about the PO⁴D program right here in "PO⁴D Corner." Until then . . . **Power to the PO⁴Ds!**

October Meeting Highlights

'Lighten Up Before You Tighten Up' Says Mike Roberts at Harvey Hotel Downtown



Mike Roberts, executive director of Professional Development Seminars, a Dallas-based professional training company, encouraged the D/FW Chapter of MPI to "Lighten Up Before You Tighten Up." His interactive program included techniques to help us • stay calm and productive under pressure; • deal with temper; • stay flexible; • turn stress into energy; and • use humor in the workplace.

*Photos by
Mark Lazarow
Photography*



Harvey Hotel Downtown staffers—**Lisa Spitz, Sheryl Kuhn, Elyse Padder and Amy Arthur**—sell Professional Growth Awards (PGA) opportunity tickets. PGA provides education scholarship assistance for D/FW Chapter members. Presented to the winner of the drawing were two round-trip American Airlines tickets, courtesy of Louisiana Hospitality and Travel.



Recruiting volunteers for The Kids Charity Ball were **Linda Thornton** (The Fun Factory), **Steven Foster** (Gray Line), **Patti Wilke**, 1996 TKCB chair, and **Cheryl Beasley, CMP** (Sabre Travel Information Network).



Colleen Albert Rickenbacher, CMP (Dallas CVB) encourages volunteerism for the '95 Professional Education Conference (PEC) Dec. 10-12 at the Wyndham Anatole Hotel. There's a need for airport greeters, hotel greeters, transportation coordinators, and tour booth assistants. Help is also needed for the "Taste of Texas" amenity and in the areas of amenities stuffing and distribution. Contact Rickenbacher regarding volunteer opportunities.



A popular spot in the pre-meeting exhibit area was the massage chair of **Thomas Kaiser, RMT**. Tom offers an "on-site massage (OSM) program in the workplace." An upper body massage—neck, shoulders, back, arms, and hands—in a special chair providing support in a comfortable position "revitalizes employees in only 15 minutes, leaving them relaxed but alert," says Kaiser. Just ask **Charlotte Merrill-Davis** (Event Source Professionals), who pauses—from duties as the D/FW Chapter vice president/finance—for a little relaxation.



Co-chairs for the October meeting were **Ken Rowe** (A Class Act) and **Leah Belasco** (Cooper Aerobics Center Guest Lodge).

THANK YOU!

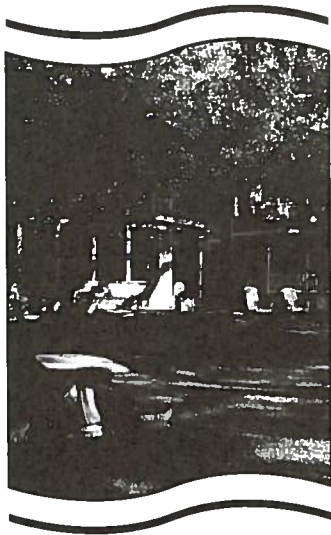
Many thanks to the individuals and companies whose time, talents, and expertise contributed to the enjoyment of the October meeting.

Thank you to guest speaker **Mike Roberts** of Professional Development Seminars and to **Mike Meller**, director of sales and marketing at the Harvey Hotel Dallas. **Mark Glosser** (MediPark) was responsible for discount parking.

Mark Miertschin (AVW) provided audiovisual services and **Ken Rowe** (Class Act Special Events) provided clowns for the foyer. **Thomas Kaiser** (Touch of Kindness) provided complimentary massage therapy.

Many thanks to the **Louisiana Travel Association** for \$1000 donation to our chapter to be used for education and programming—and for these terrific prize donations: two-round trip tickets on American Airlines, a one-night stay at the Isle of Capri Casino, and one-night stay and breakfast for two at the Sheraton Shreveport.

Many thanks to **Shelley Kaler** of **Mark Lazarow Photography**. Kaler took care of the still photos while Lazarow took care of videotaping the program.



INN ON THE RIVER

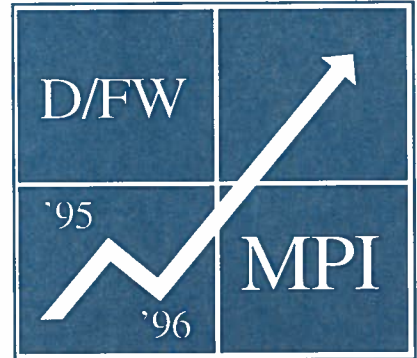
The "Inn" Way To Take Care of Business.

Nestled in the trees along the bank of the Paluxy River, the historic Inn On the River has perfected the art of taking care of business. With a peaceful atmosphere that lacks interruptions, you will find that your work is completed with great efficiency.

- State-of-the-Art Conference Center
- Audio and Video Equipment
- Electronically-Controlled Screen
- Fax Machine, Conference Phone, Copier
- 22 Rooms
- Gourmet Meals
- Tranquil and Creative Haven

For meeting information and brochures, contact Kathi Thompson at 214-424-7119
205 S.W. Barnard St. • Glen Rose, Tx. 76043 • 817-897-2101 • Fax 817-897-7729

Commitment to Excellence



Exceeding Expectations!

MPI

MEETING PROFESSIONALS INTERNATIONAL®

December 6

"How To" Breakfast

"Budgeting"

Blue Mesa Grill

7:30-9:30 a.m.



for more information:
Cherrie McBratney (The AMS Users' Group)
214-869-1355

Alcohol Policy D/FW Chapter of MPI

"The D/FW Chapter of MPI recognizes and supports the many legitimate uses of alcoholic beverages in the process of conducting our business and social activities. As a chapter, we also recognize that the use and consumption of alcohol at our functions carries with it the requirement to consume those beverages responsibly and in keeping with our professional code of ethics and conduct. We strongly oppose the abuse and misuse of alcohol.

We further support those efforts that seek to inform our members of the issues concerning alcohol use and in offering assistance to any members seeking further information and/or assistance either personally or professionally."

—adopted by the Board of Directors of the Dallas/Fort Worth Chapter of MPI (September 1995).

D/FW MPI Stars!

Chapter members who contribute services or products to chapter meetings and special events will be recognized as STARS of D/FW MPI. Member companies can achieve up to "FIVE STAR" status.

If you have a product or service you would like to showcase, call or fax your board resource liaison. And when your company donates a product or service, be sure to provide a tracking form to the appropriate board member.

Report 'Star Status' Offers & Records to these Board Members:

Resource Liaison

Jan Pollard
(Omni Hotels)

Deborah Wheeler
(Society of Petroleum Engineers)

Susie Carr
(Annuity Board of the SBC)

Sherri Cook
(Sherri Cook & Associates)

Gail LeMaire
(Adolphus Hotel)

Tracey Smith
(Computer Language Research, Inc.)

Kathi Thomson
(The Inn on the River)

Resource Area

Chair

Transportation

Hotels, Caterers, Meeting Sites

Audio Visual

Speakers, Entertainment

Decorators, Gift Baskets, Promo Items

Printers, Graphic Artists, Signage

FAX

214-444-8822

214-952-9435

214-720-2105

214-732-9398

214-651-3563

214-250-7859

214-424-9766

Watch for the Stars!

Watch for regular listing of D/FW MPI Stars!



It's the perfect way to go at the new Waterfront Hilton Beach Resort...overlooking 8½ miles of the widest, whitest and sandiest beach in Southern California.

21 meeting and function rooms, 14,000 square feet in all, including a Grand Ballroom, plus 11 boardrooms overlooking the Pacific. All high-tech, high-styled, and four-diamond rated...with your own meeting services manager to make sure your meeting runs smoothly from start to finish.

300 spacious oceanfront rooms, each with private balcony. Concierge floors with private check-in and special lounge.

For recreation, there's swimming in pool or ocean, sunbathing, surfing and sailing, tennis, beach hiking, bike riding, kite flying, golfing nearby, and our private fitness center and spa.

Close to the best of Los Angeles and Orange County, you'll find the Waterfront Way the perfect way for your next meeting.

Ask about our hotel video.

New Pavilion adds 6000 sq. ft. of meeting and exhibition space

The Waterfront
Hilton
Beach Resort

On Southern California's Best Beach

800/822-7873 • 714/960-7873
21100 Pacific Coast Hwy,
Huntington Beach, CA 92648



MEMBERSHIP NEWS

'New Kids on the Block'

D/FW Chapter Welcomes 14 New MPI Members!

Dan Arguijo
Seasons & Times Flowers Etc. Inc.
408 North Bishop Street, Suite 108
Dallas, TX 75208
214/942-5317
214/942-0304 (fax)
Supplier

Amy K. Arthur
Harvey Hotel Addison
14315 Midway Road
Dallas, TX 75244
214/980-8877
214/788-2758 (fax)
Supplier

Anne T. Armstrong
Five Star Speakers & Trainers
381 Casa Linda Plaza, Suite 191
Dallas, TX 75218
214/342-2100
214/348-2646 (fax)
Supplier

Alison M. Brody
Hyatt Regency DFW Airport
P. O. Box 619044
DFW Airport, TX 75261
214/615-6738
214/615-6735 (fax)
Supplier

Lillie Y. Davis
Embassy Suites Hotel Market Center
2727 Stemmons Freeway
Dallas, TX 75207
214/630-5332
214/631-3025 (fax)
Supplier

Betty J. Dean
GTE Telephone Ops World
Headquarters
600 Hidden Ridge HQE01H20
Irving, TX 75038
214/718-3326
214/718-1510 (fax)
Planner

Amy J. Doerr
Inst Spine & Biomedical Research
6300 West Parker Road, Suite 100
Plano, TX 75093
214/608-5178
214/608-5183 (fax)
Planner

Paulette G. Good Lindsay
Radisson Hotels Worldwide
13234 Staircock
San Antonio, TX 78248
210/408-1177
210/408-1167 (fax)
Supplier

Karie L. Lehigh
BeautiControl Cosmetics
2121 Midway
Carrollton, TX 75006
214/458-0601
214/661-2538 (fax)
Planner

Karen B. Morgan
The Grand Kempinski Hotel
15201 Dallas Parkway
Dallas, TX 75248
214/386-6000
214/404-1848 (fax)
Supplier

Suzy C. Morse
Hard Rock Cafe
2602 McKinney Avenue, Suite 320
Dallas, TX 75204
214/969-5572
214/871-3132 (fax)
Supplier

Konnie Patice
Galactic Marketing Incentives, Inc.
1903 Stadium Oaks Court
Arlington, TX 76011
817/275-8611
817/275-2008 (fax)
Planner

Jennifer C. Wasserman
Embassy Suites Hotel Park Central
13131 North Central Expressway
Dallas, TX 75243
214/234-3300
214/437-9863 (fax)
Supplier

William B. Wieser CHA
Le Meridien Hotel
650 North Pearl Street
Dallas, TX 75201
214/979-9000
214/855-1735 (fax)
Supplier

MPI

MEETING PROFESSIONALS INTERNATIONAL®

RE:CMF
Resource
Exchange
Dallas '95

FOR MORE
INFORMATION ABOUT
THE PROGRAM CALL
1-214-712-7705.

MPI

MEETING PROFESSIONALS INTERNATIONAL
Committed to Educational Leadership

PROFESSIONAL EDUCATION CONFERENCE-
NORTH AMERICA
DALLAS, TEXAS
DECEMBER 9-12, 1995

**FREE CHAPTER MANAGEMENT
FORUM WORKSHOP**
"REVITALIZING YOUR MEETING STRATEGY"

SPEAKER:
DR. WILLIAM J. QUAIN PHD
*PLUS 18 ROUNDTABLE DISCUSSIONS

WHEN:
SATURDAY, DECEMBER 9, 1995
(NEW DATE AND TIME) 1-5 P.M.

WHERE:
WYNDHAM ANATOLE HOTEL

WHY:
TO GAIN INVALUABLE INFORMATION ABOUT DEVELOPING YOUR
LEADERSHIP SKILLS AS WELL AS HOW TO REVITALIZE THE ENTHUSIASM
WITHIN YOUR CHAPTER.

TEXAS-SIZED BARBECUE
SPONSORED BY CIRCLE R RANCH
FOLLOWING THE AFTERNOON FORUM, ALL CMF ATTENDEES ARE
INVITED TO ATTEND THE TEXAS-SIZED BARBECUE AT CIRCLE R
RANCH.

COME DRESSED IN CASUAL/WESTERN ATTIRE ON SATURDAY,
DECEMBER 9, (NEW TIME) 6-9 P.M. READY TO RELAX WITH HORSE-
DRAWN HAYRIDES, WESTERN BARBECUE, DANCE REVIEW AND A
LIVE BAND! BUSES BEGIN LOADING AT 5:45 P.M. - 6:15 P.M.

YOUR BUS AND BARBECUE PASS WILL BE INCLUDED IN YOUR CMF
REGISTRATION PACKET PROVIDED AT THE AFTERNOON FORUM. YOU
MUST HAVE A PASS TO ATTEND THE EVENING EVENT!

* To register please
check the CMF box
on the Conference
Registration Form.

Table Hosts Alert Members About Upcoming Activities

By Pat McCain, CMP
Krisam Group

If you've attended a chapter meeting recently you've noticed that each table has a designated table host to review with you upcoming educational opportunities and other chapter activities.

The table host program cuts down on the amount of time spent making announcements during meetings, and allows for a more meaningful exchange.

If you would like to express a concern about—or appreciation for—something in our chapter, speak up!

We welcome your input and value your opinions! Your table host will relay your input to the Board of Directors.

MPI

MEETING PROFESSIONALS INTERNATIONAL®

D/FW Chapter

Chapter of the Year 1994

Chapter Newsletter Award 1995

Chapter of the Year 1988
Chapter of the Year 1989

Membership Renewals



Jay Allen
The Carey Companies

Lisa B. Barham
DFW Reader Board Service

Nancy L. Bracalento
Sprint

Edye Brookshire, CMP
Army & Air Force Exchange Service

Phares Corder
Phares Corder Entertainment

Charles E. Corrales
Center for Community Cooperation

Ron E. Couget Jr.
Le Meridien Hotel

Donna S. Daves
The Freeman Companies

Sandi Galloway
Canadian Consulate General

Paulette G. Good Lindsay
Radisson Hotels Worldwide

Deirdre L. Gordon
The Kerry Company

Mary J. Henderson
Independent Planner

Bennie Hill
PDX, Inc.

Jessica L. Jackson
Holiday Inn Worldwide Sales

Donna C. Johnson
SuperShuttle International

Beverly O'Laughlin
Compucom Systems

Jolene Panigot
Marriott Hotel

Steve C. Parker
Dallas Historical Society

David K. Powdermaker
Circle R Ranch

Marcy Roitman
Grapevine Convention & Visitors Bureau

Katherine F. Scheib
Bill Bates Cowboy Ranch

Francie K. Schwartz
Spectra Communications, Inc.

Susan E. Singleton
Hogan Systems

Greg C. Slight
Sabre Travel Information Network

Kaye Sparks
Northern Telecom, Inc.

Mark Thomas
Independent Planner

Linda G. Tibbets
Integrity Publishing, Inc.

Robert E. Walker
AVW Audio Visual, Inc.

Scott S. Wilson
Bauer Audio Visual, Inc.

Gift for PEC Attendees, Foundation Fundraiser

Texas Cookin' Hits the Marketplace

By Cindi Ghormley, CMP
Frito-Lay, Inc.

The D/FW Chapter of MPI has cooked up a sure-fire recipe for success.

Take hundreds of recipes, add hours of volunteering, blend in great artistic talent and a pinch (or more, as needed) of perseverance and the end product is a great cookbook filled with recipes from all corners of the metropolis.



Cindi Ghormley,
CMP
Frito-Lay, Inc.

From Judy Love Rondeau's (Canadian Tourism Office) "Black Bean and Orzo Salad to Cindy Hamilton's (Cityplace Conference Center) "Chicken Enchiladas," and

hundreds of great recipes in between, there is a recipe for all occasions.

A cookbook featuring favorite Texas or regional specialties from among our membership—as well as from noted Dallas/Fort Worth area chefs and state and local celebrities—*Texas Cookin'* will be a special gift for all attendees at the PEC Conference/Dallas in December.

The remainder of the cookbooks will be sold to raise money for the 1995-96 MPI Foundation Fundraiser. Several hundred books will be for sale, but they're sure to go fast at the great price of \$10.

Also, don't miss out on purchasing the matching Dallas Apron to complement your own or your gift cookbook (see the enclosed flyer/order form).

Texas Cookin' is a terrific way to take care of some of the names on your holiday gift list! Be among the first to start holiday shopping—order now!

President-Elect Mary Lynn Novelli (Sterling Hotels & Resorts) is chair of the cookbook committee. Co-chair is Lesley Meyer, CMP (Sunbelt Motivation & Travel, Inc.).

The D/FW Chapter of MPI presents

Texas Cookin'



*Texas & Regional Specialties to
Please Palates & Tempt Tastebuds
of PEC Attendees—and Many Others!*

*Special thanks to chapter members and to the
following establishments for submitting entries to Texas Cookin'*

POMODORO CORPORATION	SONNY BRYAN'S SMOKEHOUSE
OMNI MANDALAY HOTEL, LAS COLINAS	CLARION HOTEL RICHARDSON
THE MELROSE HOTEL	THE MANSION ON TURTLE CREEK
HYATT REGENCY DALLAS AT REUNION ARENA	THE WORTHINGTON HOTEL
RADISSON PLAZA HOTEL, FORT WORTH	DEEP ELLUM CAFES
LE MERIDIEN DALLAS	SOUTHFORK RANCH EVENT & CONF. CENTER
STONEBRIAR COUNTRY CLUB	THE FAIRMONT HOTEL
BABY DOE'S	DICK'S LAST RESORT
BLUE MESA GRILL	ARLINGTON HILTON
STOUFFER RENAISSANCE, DALLAS	STAR BRAND RANCH EXECUTIVE RETREAT
THE ADOLPHUS HOTEL	CIRCLE R RANCH
GARRETT CREEK RANCH	ZILLER BREZZELL COMPANY
RIVERSIDE FARMS	CITY CAFE, FORNEY
DOUBLETREE HOTEL PARK WEST	GOSSETS KOUNTRY KITCHEN
HARD ROCK CAFE	THE PALMEROSA RANCH
SILVER TRAY CATERING	CHAMBERLAIN'S PRIME CHOP HOUSE
DOUBLETREE HOTEL CAMPBELL CENTRE	RUTH'S CHRIS STEAK HOUSE
THE WESTIN HOTEL GALLERIA	YEGUA CREEK BREWING
HARVEY HOTEL, ADDISON	STAR CANYON



Planner of the Year

Steve Kemble — Event Planner Extraordinaire!

By David Erkel

International Mtg. Mgt. Services

He is the Grand Master, McDaddy, Big Cheese, Numero Uno Meeting and Event Planner Extraordinaire!

It was no surprise to anyone familiar with Steve Kemble's work or long standing career when he was named 1995 D/FW Chapter Planner of the Year.

"It seems I've always been planning events of one type or another," Kemble recalls, reflecting on his college days at Southwest Texas State University, where he served as president of both his fraternity and the university student government.

Kemble went directly into the meeting and event planning industry after graduation, working with political campaigns and fundraising events until he went into business for himself in 1987.

Steve Kemble Event Design is a total meeting and event planning company that takes pride in being "one of the most creative and unique companies of its kind in the United States." Comprehensive planning is available from initial concept to on-site coordination of the program.

Kemble's contributions to the planning industry are immense: articles published in national journals, national speaking engagements, college instruction of senior level meeting planning curriculum.

The recipient of numerous awards and recognition from industry organizations and media throughout his career, Kemble is especially proud of these accolades: "National Affiliate of the Year" by the National Association of Catering Executives; being named "Special Event Pioneer of the 21st Century" by George Washington University; and "Outstanding Dallas Designer" by the *Dallas Observer* newsmagazine.

Events by Kemble may include a typical board meeting for 10 people or an extravagant theme party for 2,000 guests. And he's just as likely to oversee a grand event in New York or Los Angeles as in Dallas.



Steve Kemble absolutely loves his work. He possesses the passion, creativity, and skills necessary to tie together numerous complex details required to make a major event a smashing success.

"Meeting fascinating people, the continual challenges and finding the solutions, the fact that every day is different from the last—these are the reasons I love what I do!" Kemble said.

In the 100+ degree temperatures of the summer of 1984, few knew the human roaming around town in the wool elephant suit was Kemble—in his role as the official mascot for the Republican National Convention.

A community servant, Kemble has contributed time and energy to a number of local organizations. He has also been the force behind the holiday decorations effort at Dallas City Hall.

"It's so rewarding to give back to the community, knowing that your efforts make a difference," says Kemble. "Having fun with other volunteers during the process makes it even better!"

Involvement with the D/FW Chapter of MPI has been a priority since Kemble

joined the organization in 1991. He covers the gamut, from donations to fundraisers—financial as well as physical properties—to co-chairing and moderating monthly meetings, and serving on a myriad of committees.

Kemble is an advisory board member of The Kids Charity Ball, the D/FW Chapter's major fundraiser. He has been a two-time "Bronze Sponsor" and was last year's TKCB chair.

A former two-term board member, Kemble currently serves on the PEC Public Relations Committee, and is chair of the Annual Awards Banquet Committee. Heading up the "ice breaker" activities that have recently become a part of the monthly meetings is—who else?—Kemble, of course!

Attributing much of his success to ties he has developed over the years with Meeting Professionals International, Kemble encourages members to become involved with the association through its array of committees and activities.

"The MPI community is wonderful! Everyone has something to contribute and we benefit from each other," Kemble said.



The Kids Charity Ball

What is it? A gala evening, sponsored by the MPI D/FW Chapter, benefitting terminally ill and underprivileged children. Proceeds from the ball will benefit kids of Give Kids the World, Love for Kids, Trinity Ministries to the Poor and the North Texas Food Bank. The event is also an excellent educational opportunity.

When is it? Saturday Evening, March 30, 1996

Where is it? Great Hall of the International Apparel Mart

How can I help? Volunteer your time and/or your contacts. There are many facets to produce an event of this caliber, where we can put our professional and personal skills to good use. Two committees needing immediate assistance are the Live and Silent Auction Committee and the Celebrity Bears Committee.

Each year these committees are responsible for bringing in a significant portion of the net proceeds through the auction. Auction item donors' with excellent exposure to a key market of industry professionals, while the ball's guests receive wonderful values on the auction items and the opportunity to sample first hand the various hotels, restaurants, services and products found in the auction.

This year the committee will add yet another benefit to the sponsor's -- a Yellow Page Directory. All Live Auction, Silent Auction and other Sponsors will receive a complimentary listing in a special pull out quick reference section of the program. This directory will also be sent to each MPI D/FW Chapter member after the ball.

The Silent and Live Auction Committee is looking for volunteers to assist with the acquisition of items and for items themselves. Please call Patti Palacios (Helms/Briscoe Performance Company) at 214-960-5826 or Peg Wolschon (Kerrville Bus Company) at 214-263-0294, to volunteer to help on this committee.

If you have professional or personal contacts to acquire auction items fill out the enclosed form or call Patti or Peg. We have developed a wish list of items, the auction is by no means limited to these items -- it is only limited to each of our imaginations. Please help us help the kids!

The Celebrity Bears Committee also offers an easy, fun and rewarding opportunity to support "The Kids." They are looking for people to sew the trademark red satin cummerbunds and bow ties. Most importantly, they are looking for people to help secure celebrity autographs for the cummerbunds and designers to "dress" the bears. Please call Pat Burgher (Travel Resources - Sterling Hotel Group) at 214-402-4858 to volunteer.

Both committees meet once a month and would greatly appreciate any volunteers or assistance from our chapter. This is an excellent opportunity to meet and work with your fellow MPI members on a very worthwhile cause.

THE KIDS CHARITY BALL AUCTION WISH LIST

BUSINESS

Advertising Space
Computer Software
Copy Machine
Courier Service
Letterhead/Logo Design
Office Supply Gift Certificate
Personal Computer
Plain Paper Fax Machine
Stationary
Year Lease on Cellular Phone

CHILDREN

Birthday Party Package
Books
Celebration Station Family Package
Kid's Clothes
Large Stuffed Animals
Unique Toys
Year Admission to the Discovery Zone

PERSONAL

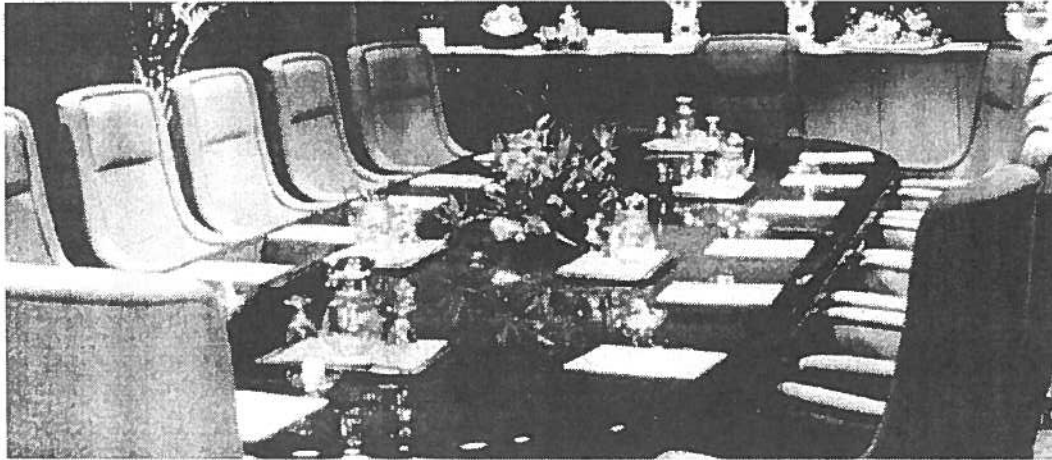
Concert Tickets
Day of Beauty
Furniture Gift Certificate
Golf Equipment
Grocery Store Food Certificate
Housewares Items
Signed Sports Memorabilia
Tennis Equipment
Theater Tickets
Year Lease on Car

TRAVEL

Airline Tickets
Golf Package
Kentucky Derby Package
New York City Theater Package
Olympic Games Package
Tennis Package

No item is too large or too small

For more information on other The Kids Charity Ball Committees, call Patti Wilke (Chairman) at 214-361-7789.



WE'LL TAKE CARE OF THE MEETING SO YOU CAN TAKE CARE OF BUSINESS.

.....

The Hiltons of Texas can provide you with the services and facilities to make your meeting go exactly as planned. From comfortable meeting rooms and support services to an experienced and attentive staff, we have the consistency you're looking for. For reservations, call any Hilton in Texas, or call Hilton Direct at 1-800-321-3232.



Arlington Hilton • Beaumont Hilton • College Station Hilton and Conference Center • DFW Hilton Executive Conference Center
Dallas Parkway Hilton • El Paso Airport Hilton • Houston Hobby Airport Hilton • Houston Plaza Hilton
Houston Southwest Hilton • Nassau Bay Hilton and Marina • San Antonio Airport Hilton and Conference Center
Westchase Hilton and Towers • Waco Hilton Inn

HILTON. SO NICE TO COME HOME TO.

.....

MPI

MEETING PROFESSIONALS INTERNATIONAL®

Dallas/Fort Worth Chapter
4020 McEwen • Suite 105
Dallas Texas 75244



DALLAS/FORT WORTH CHAPTER

MPI

MEETING PROFESSIONALS INTERNATIONAL®

Meeting Professionals International is the world's largest association of meetings professionals with more than 13,200 members in 44 countries and 54 chapters and one club. MPI's mission is to provide educational opportunities and recognition for those in the meetings industry. The association is committed to excellence in meetings, continuous international growth, research, a strong chapter network and high ethical standards.

MPI International Headquarters
INFOMART
1950 Stemmons
Suite 5018
Dallas, Texas 75207-3109
214-712-7700

MPI
Dallas/Fort Worth Chapter
4020 McEwen • Suite 105
Dallas Texas 75244
214-774-1404
FAX 214-490-4219
E-Mail: 74742.1725 (Compuserve)
or
INTERNET:74742.1725@compuserve.com

Officers

President

Phyllis Firebaugh, CMP
Krisam Group
214-458-8692

President-Elect

Mary Lynn Novelli
Sterling Hotels & Resorts
214-402-4875

Immediate Past President

Diane Smith, CMP
Alcon Laboratories, Inc.
817-551-8077

Vice President/Administration

Linda Sergeant
Bill Reed Decorations, Inc.
214-823-3154

Vice President/Education

Greg Pynes
Town of Addison
214-450-6202

Vice President/Finance

Charlotte Merrill-Davis
Event Source Professionals
817-267-6698

Vice President/Membership

Sally Goldesberry, CMP
Meetings & Exhibit Specialists
214-407-0755

Vice President/Programs

Michelle Carter
Southfork Event & Conference Center
214-442-7800 x281

Vice President/Public Relations

Dana Nickerson, CMP
Square One Productions
214-343-8067

Board of Directors

Planners

Susie Carr, CMP
Annuity Board of the SBC
214-720-0511

Sherri Cook, CMP
Sherri Cook & Associates
214-732-9396

Tracey Smith
Computer Language Research, Inc.
214-250-7404

Deborah Wheeler
Society of Petroleum Engineers
214-952-9311

Suppliers

Traci Bower
Reunion Ranch
214-271-2666

Gail Lemaire
The Adolphus Hotel
214-742-8200

Jan Pollard
Omni Hotels National Sales Office
214-444-0044

Kathi Thompson
The Inn on the River
214-424-7119

CURRENT Staff

Editor

Gracie Hatfield Hilton
The Write Stuff
Ph. & FAX 817-467-7439

Advertising Director

Kristi Hollomon
J&S Audio Visual, Inc.
214-241-5444

PROFESSIONAL EDUCATIONAL CONFERENCE MEETING PROFESSIONALS INTERNATIONAL

Volunteer Orientation Meeting We need you to attend!

Thursday, November 30, 1995
Wyndham Anatole Hotel
Trinity Hall

(Directions: Behind the Veranda Club
Free parking available)
4:00 - 5:00 PM

- ~ Overview of conference activities
- ~ Pick-up Uniforms
- ~ Final details on where you should be
- ~ When you should be there
- ~ And any other questions you may have

UNIFORMS:

All D/FW Chapter Members (or students) must be in uniform (sweatshirt or vest) as you meet and greet; assist in certain events; transportation or host committee booth.

CHAIRPERSONS:

Sally Goldesberry, Greeters, (214) 407-0755
Diane Smith, Amenities, (817) 551-8077
Donna Daves, Uniforms (214) 638-6450
David Gisler, Signs/Banners, (214) 634-1463
Lesley Meyer, CMP, Transportation, (214) 401-0210
Alan Powdermaker, Sponsorship, (214) 539-9121
Ron Trammell, Sponsorship, (214) 630-8787

**SEE YOU ON
NOVEMBER 30!!!**

TEXAS COOKIN'

Texas Cookin' is on its way to you! This great compilation of recipes from members and friends of the Dallas/Fort Worth Chapter of MPI is coming off the press soon. What a great stocking stuffer for all those on your holiday gift list! The books will be sold on a first-come first-serve basis, so order early!

Please reserve for me:

_____ *Texas Cookin'* Cookbooks @ \$15 each _____

_____ Matching 'Dallas' Aprons @ \$10 each _____

_____ *Texas Cookin'* Cookbook and Matching
'Dallas' Apron Sets @ \$20 _____

Total \$ _____

(Name)

(PHONE)

(Company)

(FAX)

(Address, City, State, Zip)

Fax order form to Cindi Ghormley, CMP, 334-5843

(Please note: Cookbooks and Aprons will be sold at PEC, therefore orders received after 12/8 may not be filled.) *All orders will be available for pick up at the Dallas Booth at PEC and the December chapter meeting.*



Solicited By _____
Company _____
Phone Number _____



Item Number _____
Date Submitted _____

The Kids Charity Ball

SATURDAY, MARCH 30, 1996 SILENT AND LIVE AUCTION SPONSOR GUARANTEE FORM

Name of Company Providing Donation _____
Address _____
City _____ State _____ Zip Code _____
Company Contact _____ Title _____
Phone _____ Fax _____

Yes, we will be happy to participate as a: Silent Auction Sponsor Live Auction Sponsor
Very Important! Please complete the following information and send brochures, menus, sales kit, etc. to display with your gift:
Correct listing for sponsor in the program _____ List as Anonymous
Title of Gift _____ Retail Value of Gift \$ _____
If you are donating a hotel stay, please identify the number of nights offered _____
Description of Gift (as it should be printed in the program) _____

Limitations to the gift _____

Gift/Gift Certificate: Enclosed/Attached Will mail item(s) at later date Requires pick-up
Pick-up By: _____ Pick-up at: _____

The 1996 Kid's Charity Ball Program will have a special pull out section: Yellow Page Directory, a sample format is attached. If you would like to be listed, please indicate which section your company name should appear. There is no charge for silent auction sponsors, live auction sponsors nor corporate sponsors for inclusion. Please indicate the section to list your company:

- | | | | |
|--|--|--|--|
| <input type="checkbox"/> Airlines | <input type="checkbox"/> Attractions | <input type="checkbox"/> Flowers | <input type="checkbox"/> Professional Services |
| <input type="checkbox"/> Animal/Pet Care | <input type="checkbox"/> Beauty | <input type="checkbox"/> Gifts | <input type="checkbox"/> Restaurants |
| <input type="checkbox"/> Apparel/Accessories | <input type="checkbox"/> Cruise | <input type="checkbox"/> Hotels | <input type="checkbox"/> Travel |
| <input type="checkbox"/> Art/Framing | <input type="checkbox"/> Entertainment | <input type="checkbox"/> Personal Services | <input type="checkbox"/> Other _____ |

No, we are unable to participate at this time with an auction item, but prefer to make a "Gift of Love" of \$ _____

No, we are unable to participate at this time with an auction item or cash donation, but would like to have information on becoming a table sponsor. Please contact: _____ Phone _____

Please retain a copy for your files and fax or mail a copy to:

PATTI PALACIOS
Helms/Briscoe Performance Group
3418 Midcourt, Suite 110
Dallas, Texas 75006-5006
Phone: 214-960-5826 Fax: 214-960-5828