

MPI

MEETING PROFESSIONALS INTERNATIONAL®

CURRENT

Meeting Professionals International

February 1996

Dallas-Fort Worth Chapter

President's Message

Chapter Goals Top Priority at Board's Winter Retreat

By Phyllis Firebaugh, CMP
D/FW Chapter President

The officers and Board of Directors met last month for our Mid-Year Board Retreat, reviewed our achievements to date, and re-energized for the second half of our year. Here are some highlights.



Phyllis Firebaugh, CMP
D/FW Chapter President

•At the successful, "best ever" PEC, we kicked off another fantastic project! *Texas Cookin'* was so well received as a guestroom amenity for PEC attendees, that we sold an additional \$2,600 worth of cookbooks for gifts!

We still have enough copies to sell to fund a contribution to The Foundation and contribute to sponsorships through our PGA program! Seize this opportunity to buy them, along with a matching "Dallas" apron. Project Chair Mary Lynn Novelli, CMP (Sterling Hotels & Resorts) would love to hear from volunteers willing to serve on her committee for the Foundation Fundraiser!

•We will kick off our first Mentor Program this month to foster career growth from seasoned professionals.

•Look for special recognition of members at chap-
(continued on page 10)



MPI

MEETING PROFESSIONALS INTERNATIONAL®

February D/FW Chapter Meeting

"Family Fun Fest"

Developing Guest & Family Programs

Thursday, February 22

Bronco Bowl

2600 Fort Worth Avenue

Dallas, Texas 77211

214-943-1777

Orientation 5:30 p.m.—VIP Box Area, Arena
Registration, Kids' Program, TradeShow 6:00 p.m.—Arena
Dinner & Program 7:00 p.m.—Banquet Rooms

—Dress is Casual!—

R.S.V.P. to Joe
by noon, Tuesday, Feb. 20
•phone 214-233-9107
•FAX 214-490-4219
(see FAX insert)
•74742.1725@compuserve.com

Advance Registration \$26
Late Registration \$35
Guest Registration \$30
Ages 12-18 \$26
Ages 4-11 \$13
Ages 3 & under Free

See page 3 for more details and meeting reservation policy.

INSIDE

February Meeting Details

3

Chapter Elections

4

Education News

5

Membership News

7

Last Month's Meeting

8

Public Relations, Marketing

12

Legislative Action Day

14

Community Service

15

CURRENT

MPI

MEETING PROFESSIONALS INTERNATIONAL®

Dallas/Fort Worth Chapter

Newsletter Staff

Editor

Gracie Hatfield Hilton
The Write Stuff
Phone & FAX
metro 817-467-7439
e-mail: 75647.22@compuserve.com

Vice President/Public Relations/Marketing

Dana Nickerson, CMP
Square One Productions
214-343-8067
FAX: 214-343-6166

Advertising Chair

Kristi Hollomon
J&S Audio Visual, Inc.
214-241-5444
FAX: 214-247-2590

Photographer

Mark Lazarow
Mark Lazarow Photography
214-380-0985
FAX: 214-380-1431

MISSION STATEMENT

MEETING PROFESSIONALS INTERNATIONAL
Meeting Professionals International is the pivotal force in positioning meetings as a primary communication vehicle and a critical component of an organization's success. Meeting Professionals International leads the meetings industry by serving the diverse needs of all people with a direct interest in the outcome of meetings, educating and preparing members for both their changing roles and validating relevant knowledge and skills, as well as demonstrating a commitment to excellence in meetings.

The *CURRENT* is published 12 times yearly for the D/FW Chapter of Meeting Professionals International, the industry's leading educational and networking resource in meetings management. Statements of fact and opinion are the responsibility of individual writers and do not imply collective opinion of the officers or members of MPI.

Upcoming Chapter Meetings

February 22, Thursday
Chapter Meeting
"Developing Guest & Family Programs"
Bronco Bowl
6:30 p.m.

March 28, Thursday
Chapter Meeting
International/Gemelli Theme
Hall of State
11:30 a.m.

April 25, Thursday
Chapter Meeting
"ROI"
Fort Worth Venue TBA
6:30 p.m.

May 23, Thursday
Chapter Meeting
Annual Awards Banquet
The Adolphus
6:30 p.m.

June 27, Thursday
Chapter Meeting
"Team Building"
Southfork Ranch
6:30 p.m.

July 18, Thursday
"Natural Resources"
Venue TBA
11:30 a.m.

NOTE: Chapter meeting plans are subject to change.

Check the CURRENT each month to confirm details.

For more information about association events, call MPI Headquarters, 214-712-7700.

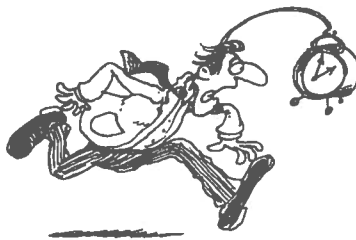
Upcoming Events • Related Organizations

HSMIA
April 11-14
68th Annual Convention
Fairmont Hotel
Dallas, TX

NACE
March 6, Wednesday
Monthly Meeting
Details TBA

CURRENT Deadlines

Upcoming deadlines for copy and ads
for the D/FW Chapter of MPI newsletter, the *CURRENT* —



ISSUE	DEADLINE
March '96	Feb. 16, Friday
April '96	March 15, Friday
May '96	April 19, Friday
June '96	May 17, Friday
July '96	June 14, Friday
August '96	July 1, Monday* *earlier than usual!

Copy is cheerfully accepted early. *Because of production schedules, information received after the deadline day will not be included in the newsletter in progress. Late-arriving copy will be included in the next month's issue, if information is still timely.*

Please mail 3.5 disk, Windows format—preferably in Microsoft Word or WordPerfect—to Gracie H. Hilton (The Write Stuff), *CURRENT* editor, 3020 Glasgow Court, Arlington, Texas 76015.

Microsoft Word for Windows 6.0 documents may be sent electronically to Gracie Hilton—75647.22@compuserve.com

February Meeting Highlights

February Fun Fest at Bronco Bowl— Developing Guest and Family Programs

By Alainna S. Webb

Meeting Mgmt. Associates/Festivities

Have you ever planned or attended a conference and wondered, “What will we do with spouses, guests and/or children?”? Maybe there were some wonderful activities offered and you wanted to know how these programs were developed.

February’s chapter meeting at the Bronco Bowl and Entertainment Center has much in store.

We are doing things a little differently this month. First of all, attendees are encouraged to bring their spouse or significant other and children, too. Yes, kids are welcome, too! Dress is *casual* for this sure-to-be fun evening!

In the arena, interact with experienced professionals and learn more about some exciting guest and family programs. Areas being represented include •Attractions, •Destination Management Services, •The Arts, •Ranches/Beach Clubs, •Shopping/

Luncheons, •Sightseeing Tours, •Speakers/Programs, •Sports, and •Afternoon Teas/Wineries.

During this educational gathering, kids are kept busy with popcorn, games and other entertainment. Staff will keep the kids “corralled” and having fun. Prizes will be awarded to the kids who participate and to the adults who visit the various information booths.

After the tradeshow and cocktail reception, we’re off to a scrumptious buffet dinner, including a special menu for the kids. A program—a very short one, so that our loved ones don’t become too fidgety—is scheduled during dinner.

The D/FW MPI Chapter has partnered with the Dallas Convention and Visitors Bureau in honoring our local police force. The November Officer of the Month Award will be presented to Senior Corporal Charles E. Storey.

The criteria for the selection is based on overall excellence in police work, community and family involvement, and dedication to duty. Come join our program and hear the real story on Storey!

After all is said and done, you and your family and/or guests will be “unleashed” to roam the facility. Enjoy MPI’s reserved areas, complimentary billiards, bowling and nightclub entertainment.

The 10,000-square-foot arcade will be a hit with the kids—even you big kids are in for a real treat! Game tokens will be provided for each MPI participant. The Sports Bar & Grill is also a great place to kick back and unwind.

February committee members are Alainna Webb (Meeting Management Associates/Festivities), Peg Wolschon (Kerrville Bus Company) and Esther Wigley, CAS (Appointments).



Meeting Reservation & Attendance Policy

Registration fees will be collected at the door; advance payments are not accepted. If paying by check, please have check completed before approaching registration table. Reservations must be made by RSVP deadline for advance registration fee to apply. Late reservations and walk-ins will be accepted on a SPACE AVAILABLE basis. Cancellations must be made by the RSVP deadline. **No-shows will be billed.** Members are responsible for “no-show” charges for their guests. Guests are limited to attending three meetings per year (spouses are an exception).

Alcohol Policy D/FW Chapter of MPI

The D/FW Chapter of MPI recognizes and supports the many legitimate uses of alcoholic beverages in the process of conducting our business and social activities. As a chapter, we also recognize that the use and consumption of alcohol at our functions carries with it the requirement to consume those beverages responsibly and in keeping with our professional code of ethics and conduct. We strongly oppose the abuse and misuse of alcohol. We further support those efforts that seek to inform our members of the issues concerning alcohol use and in offering assistance to any members seeking further information and/or assistance either personally or professionally.

February Host Facility

The New Bronco Bowl

After an eight-month, \$5.9 million renovation project, the New Bronco Bowl reopened its doors recently. This 136,000-square-foot complex, just 3 1/2 miles from downtown Dallas, features an array of entertainment choices and meeting space in a colorful, impressive setting.

The 3,000 seat arena, best known for musical entertainment, is also ideal for seminars and lectures. A new feature is the 9,600 square foot banquet/meeting room, seating up to 600 people. Full service catering is available on-premise, and outside catering companies are welcome as well.

The 10,000 square foot Canyon Club features a colorful, custom-designed setting. State-of-the-art sound and lighting systems add to the enjoyment of dancing and live music.

Additional amenities include a sports grill and bar with big screen TV, a 10,000-square-foot arcade, billiards and of course, *bowling!*

An on-site event coordinator is available to arrange all meeting needs, from audio/visual to transportation.

The Bronco Bowl is situated at 2600 Fort Worth Avenue, near historic Kessler Park. Exit I-30 at Hampton Road and go south. Turn right on Fort Worth Avenue and go 1/4 mile. There is full security in a well lighted parking lot—and the parking is free.

Officer Elections—an Important Key to a Successful Chapter

By Diane Smith, CMP
Alcon Labs

The Nominating Committee is pleased to present the proposed slate of officers and board members for the 1996-97 term. See insert in this issue of *CURRENT*.

The Board of Directors is made up of 17 chapter members—eight board members and nine officers. The proposed slate was derived from recommendations from the chapter membership. All nominations received were carefully reviewed by the nominating committee.



Diane Smith, CMP
Nominating
Committee Chair

In addition to the executive officers—president, president-elect, immediate past president, and vice presidents of administration, education, finance, membership, programs, and public relations/marketing—are 12 nominations for the eight director positions.

There are six nominations for both the planner and supplier category. Four directors will be elected in each category.

If a member wishes to contest the recommended slate, additional nominations may be submitted to Nominating Committee Chair Diane Smith, CMP (Alcon Labs), between February 15-25. Smith may be reached at 817-551-8077 or FAX 817-551-4696.

Additional nominees must meet eligibility requirements as listed in the Policies and Procedures section on page 16 of the Chapter Directory.

Expect your ballot via the mail around the first week in March. Ballots must be received by the Nominating Committee chair no later than Monday, March 18, 1996. Election results will be announced in the April *CURRENT*.

Thank you to the Nominating Committee for their service in this important role. They are: Bobby Bulger (Bobby Bulger Travel Concepts), Phares Corder (Phares

Corder Entertainment), Betty Garrett, CMP (Garrett Speakers International), Dick Glockner (Dallas Clarion Hotel), Steve Kemble (Steve Kemble Event Design), Linda Hill, CMP (Meeting Management Associates, Inc.), Pat McCain, CMP (Krisam Hotels & Resorts), and Bob Mitchell (Four Seasons Regent Hotels & Resorts).

Taking part in the election of our future officers and board members is one of your most important responsibilities as a member of the D/FW Chapter of MPI. When you receive your ballot, please take a few minutes to review the nominees and make your selection. **VOTE!**



MPI

MEETING PROFESSIONALS INTERNATIONAL®

D/FW Chapter

Chapter
of the Year
1994

Chapter
Newsletter Award
1995

Chapter of the Year 1988
Chapter of the Year 1989

INSTITUTES I, II & GRADUATE

1996

Three certificate programs
for meeting management
offering five-day, in-depth
educational experiences

SPRING INSTITUTES

APRIL 14-19, 1996

Peachtree Executive
Conference Center
Atlanta, Georgia

**REGISTER TODAY!
SPACE IS LIMITED**

- Four Continuing Education Units (CEUs) are awarded for Institutes attendance
- For more information, call 214-712-7751

MPI

MEETING PROFESSIONALS INTERNATIONAL
committed to Educational Leadership

1950 Stemmons Freeway • Suite 5018
Dallas, TX 75207-3109 USA



February Executive Workshop Features College Education

More and more meetings professionals realize the importance of a college degree in order to remain professionally competitive in an industry that continues to grow and develop.

At the **February 15** Executive Workshop at **Sammons Center for the Arts**, Dr. Richard Carlson, director of the Dallas Education Center, will discuss how Customized Academic Program (CAP) can meet the professional development needs for the hospitality industry through curricula tailored for specific professional goals.

"Pursuing a College Degree: A Walk through the Process," is **February 15, 4:00-5:30 p.m.**

CONTACT: Colleen Rickenbacher, CMP (Dallas CVB), 214-746-6628

February Brown Bag Luncheon Focuses on CMP Exam

At the **February 27** Brown Bag Luncheon learn all about the Certified Meeting Professional (CMP) exam—how to apply, study and sit for the CMP Exam and how being a CMP can enhance your career.

The **11:30 a.m.-1:00 p.m.** event will take place at the **Harvey Hotel Downtown, 400 North Olive.**

The program is free of charge. Bring your own lunch; drinks will be provided.

CONTACT: Jim Follett, CHSE (Intercontinental Hotels & Resorts), 214-964-3139.

'Walk a While in My Shoes' Returns

Spring dates for "Walk a While in My Shoes," the chapter's popular educational working partnership program are **March 5-23**. The class will meet from **5:30-7:30 p.m. at various venues throughout the metroplex.**

"Walk a While in My Shoes" is a limited enrollment course. Attendees are required to attend six of the eight evening sessions.

Cost for the session is \$74.
CONTACT: Susie Carr, CMP (Annuity Board of the SBC), 214-720-0511, x 658.

April Brown Bag Luncheon Showcases Specialty Products

Tired of the same old giveaways and sales promos? Put some pizzazz into your gifts. Browse through the latest and chat with friends at the **April 9** Brown Bag Luncheon

The **11:30 a.m.-1:00 p.m.** event will take place at the **Medieval Inn, 7102 Greenville Avenue.**

The program is free of charge. Bring your own lunch; drinks will be provided.

CONTACT: Heddy Roth (The Perfect Solution), 214-9732.

May Executive Workshop

Watch this column for details on the **May Executive Workshop** on "Independent Meeting Planning."

Spring CMP Exam

Registered participants may contact **Pat McCain, CMP (Krisam Hotels & Resorts)** for details—**214-458-8692.**

EDUCATIONAL OPPORTUNITIES

—at a glance—

February 15
Executive Workshop
"College Bound"
Sammons Center for the Arts
4:00-5:30 p.m.

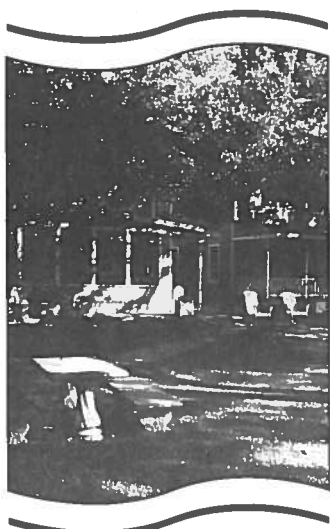
February 27
Brown Bag Luncheon
"Preparing for the CMP"
Harvey Hotel Downtown
11:30 a.m.-1:00 p.m.

March 5-April 23
"Walk a While in My Shoes"
Educational Seminars
Tuesday evenings
Various Venues
5:30-7:30 p.m.

April 9
Brown Bag Luncheon
"Specialty Products"
Medieval Inn
11:30 a.m.-1:00 p.m.

May TBA
Executive Workshop
"Independent Meeting Planning"
Venue TBA
Time TBA

TBA
Spring CMP Exam
Venue TBA
Time TBA



The "Inn" Way To Take Care of Business.

Nestled in the trees along the bank of the Paluxy River, the historic Inn On the River has perfected the art of taking care of business. With a peaceful atmosphere that lacks interruptions, you will find that your work is completed with great efficiency.

- State-of-the-Art Conference Center
- Audio and Video Equipment
- Electronically-Controlled Screen
- Fax Machine, Conference Phone, Copier
- 22 Rooms
- Gourmet Meals
- Tranquil and Creative Haven

INN ON THE RIVER

For meeting information and brochures, contact Kathi Thompson at 214-424-7119
205 S.W. Barnard St. • Glen Rose, Tx. 76043 • 817-897-2101 • Fax 817-897-7729

Heard it through the Grapevine!



By M.T. Gnadt
'Grapevine' Columnist

Carolyn Carey, CMP, has accepted the position of assistant meeting planner for the *Society of Diagnostic Medical Sonographers*.

Harvey Hotel Management Corp. has a new name. In December the company's stock went public and the Dallas based hotel chain is now called the **Bristol Hotel Management Corporation**.

Steve Kemble, president, *Steve Kemble Event Design*, received the Special Events Magazine's Gala Award for Best Event Produced in the United States for a Non-Profit Organization. The award was in recognition of the Pioneer Plaza event which Steve produced for the Dallas CVB.

Vicki Kempe has been promoted from manager of sales promotion to director of sales promotion, *RadioShack*. Vicki is a 24-year veteran of RadioShack with numerous accomplishments, including the 1995 National Serve the Server Award.

J. Scott Thompson, president, *SHOWCO Creative Services, Inc.* has announced the official name change of *SHOWCO* to *IGNITION! Creative Group, Inc.* In addition to the new name, Scott welcomes **Denise Howieson** as sales and marketing manager. Denise, a transplant from Florida, has strong ties with Dallas and MPI as she is the cousin of **Mary Lynn Novelli, CMP** of *Sterling Hotels & Resorts*.

Steve Parker, *Dallas Historical Society*, reports that "CBS This Morning," the popular national morning show, broadcast live from the Hall of State at Fair Park in November. The two-hour live broadcast was seen by an estimated 12 million viewers.

Keep up with personal news about fellow MPI chapter members—job changes, promotions, awards or special recognitions, weddings, or births—through "Heard it through the Grapevine." Please contact Mary-Therese Gnadt (214-539-6538 • FAX 214-724-0932 • CompuServe 74161,732) about items of interest for this column.

FOR EXCELLENCE IN VIP
ENTERTAINING, WE'LL EXCEED
YOUR EXPECTATIONS!



But don't take our word for it.....

"It's such a pleasure working with such a great facility.
It makes my job worry free. I give you an A+++"
Linda Vest, State Farm Insurance

SouthFork
R A N C H

MPI Facility
of the Year
1994

EVENT & CONFERENCE CENTER Call today for information!
(214) 442-7800

THANK YOU!

Thank you to the individuals and companies whose contributions made the December chapter meeting and holiday celebration a success!

Program committee members were: **Wendy Ezernak** (Wyndham Anatole), **Debbie Meyers** (BRAVO! Entertainment); and **Todd Richter** (Independent).

Gala sponsors were **Bill Thompson** and **Andrea Mulders** (OMNI Mandalay).

Nancy Fitzgerald (Kaleidoscope) provided the decorations. **Luana Stoutmeyer** (Encore Productions) provided the entertainment

Debbie Meyers (BRAVO! Entertainment) provided the holiday carolers, Santa Claus and the photo buttons.

MEMBERSHIP NEWS

'New Kids on the Block'

D/FW Chapter Welcomes 19 New MPI Members!

Patti P. Beadles
Intervoice

17811 Waterview Parkway
Dallas, TX 75043
214/454-8801
FAX 214/454-8905
Planner

Lee Greer
Jason's Deli

4004 Beltline Road; Suite 155
Dallas, TX 75244
214/233-7166
FAX 214/233-7166
Supplier

Mark B. Wilder
Harvey Hotel

1600 North Central Expressway
Plano, TX 75074
214/578-8555
FAX 214/578-9720
Supplier

Marcia L. Wisocki
IAEM

5001 LBJ Freeway; Suite 350
Dallas, TX 75244
214/458-8002
FAX 214/458-8119
Planner

Delene M. Bell

Lilands Special Events Productions
1421 Industrial; Suite 101
Dallas, TX 75207
214/748-1191
FAX 214/748-1193
Supplier

Kellye Hollis

The Ziller Brazell Company
4514 Cole Avenue; Suite 1200
Dallas, TX 75208
214/523-0650
Planner

Peggy L. Wilkinson
American Airlines

4130 Crossing Lane
Dallas, TX 75220-5036
214/350-8147
FAX 817/931-0780
Planner

Clip and save
this page as an
update to your
Chapter
Directory!

Sherry Blackwell

Blackwell Productions
3626 North Hall; Suite 721
Dallas, TX 75219
214/528-0002
FAX 214/528-8009
Planner

Andrea L. Kingston
Columbia Homecare Group

3333 Lee Parkway; Suite 300
Dallas, TX 75219
214/443-3623
FAX 214/443-3624
Planner

Membership Renewals

Thank you for recently
renewing your membership in
Meeting Professionals International!

Kellie D. Cartwright
Radisson Hotel Central

6060 North Central Expressway
Dallas, TX 75206
214/750-6060
FAX 214/750-5959
Supplier

Peggy C. Looney
**Anchorage Convention
& Visitors Bureau**

1600 A Street; Suite 200
Anchorage, AK 99501
907/276-4118
FAX 907/278-5559
Supplier

Jamie A. Cox
Buena Vista Place

1900 Buena Vista Drive
Lake Buena Vista, FL 32830
407/827-3086
FAX 407/827-6070
Supplier

Barbara L. Powell
Sally Beauty Company

3900 Morse Street
Denton, TX 76208
817/898-7547
FAX 817/381-0148
Planner

Don Feneziani

Doubletree Guest Hotels
4650 West Airport Freeway
Irving, TX 75062
214/790-0093
FAX 214/790-7144
Supplier

Gerry Reid
Gerry Reid Speaking

4333 Essex Court; Suite 104
Flower Mound, TX 75028
214/539-4487
FAX 214/539-9826
Supplier

Annette Foster

MBMA Information Services
16001 North Dallas Parkway
Dallas, TX 75248
214/701-4222
FAX 214/701-4090
Planner

Irene R. Soleymani, CMP, LES
Hyatt Hotel DFW Airport

International Parkway DFW Airport
DFW Airport, TX 75261
214/615-6737
FAX 214/615-6865
Supplier

Jean Gatz

Jean Gatz Presents
11126 Sheraton Drive
Baton Rouge, LA 70815-5321
504/275-8669
FAX 504/273-9270
Supplier

Andrea D. Stidham

Renaissance Hotel
9721 Arboretum Blvd.
Austin, TX 78759
512/343-2626
FAX 512/346-7945
Supplier

Ann M. Carlton
McKenzie Institute International

Lisa A. Conwell
McKinsey & Company, Inc.

Philip C. Crouse
Philip C. Crouse & Associates

Maria G. Escarfullery
Fiesta Americana Hotels

Nancy A. Fitzgerald
Kaleidoscope

Steven G. Foster
Gray Line of Dallas/Fort Worth

Martha K. Fox
BTI Americas, Inc.

Mary Therese Gnad
Independent

Sally A. Goldesberry, CMP
Meetings & Exhibit Specialists

Michael G. Gongre
Doubletree Hotel Lincoln Center

Cheryl L. Hopkins
Irving Convention & Visitors Bureau

Pam Jenkins
Dallas Cowboy Cheerleaders

Gene Johnson
Telsco Industries

Barbara K. Kemerer
Texas School Admin Legal Digest

Colleen T. Kilroy
Marriott National Accounts

Michael A. Kuntz
J & S Audio Visual, Inc.

Kevin A. McCutcheon
Advantage Rent-A-Car

Sharon Paulsen
Houghton Mifflin Company

Lianne J. Pereira
Wyatt

Jennifer Porter-Davis
Radisson Resort South Padre Island

Debra J. Rubin
The Worthington Hotel

Deborah J. Shaw
CityPlace Conference Center

Deborah F. Small, CMP
Society of Petroleum Engineers

Lisa A. South, CMP
Ducky Bob's Party Rentals

Charlotte St. Martin
Loews Hotel

Lisa Stedman
Four Seasons Regent Hotels & Resorts

Linda C. Thornton
Fun Factory Decorations

Jeanine A. Trigg
Rexene Corporation

Dorrit Turner
Yellow Rose Touring/Special Events

Cindy M. Watters
St. Anthony Hotel

W. Scott Wright
Wyndham Anatole

January Meeting Highlights

'Re-Engineering Everest—Taking Continuous Improvement to the Top' at The Fairmont



ABOVE: Encouraging participation in The Kids Charity Ball—March 30 in the Great Hall of the International Apparel Mart—are **Robin Wallace** (Helms/Briscoe) and **Patricia Palacios** (Helms/Briscoe).

LEFT: Guest speakers **Jamie Clarke** and **Alan Hobson** enthusiastically lend their support to "Texas Cookin.'" Sales of the cookbook will benefit the MPI Foundation. "Adventpreneurs" Clarke and Hobson addressed change, overcoming adversity, and teamwork in recounting their attempt to scale Mount Everest.

Photos by Mark Lazarow Photography

RIGHT: Guests from Calgary—sponsors of the January program—are (seated) **Lori MacKay** (Peak Performances), **Flora Fioritti-Irwin** (Maximum West), **Diana Bergdahl** (Calgary CVB); (standing) **Patti Furlong** (Tour Canada West), **Brenda Taft** (Radisson West), **Jeannie Godfrey** (Best Western), **Brenda Hahoney** (Budget Car Rental), **C. Rachelle Botte** (Road West), **Lauren Poulso** (Chateau Airport), **Jack Sheneman** (Brewster Transportation & Tours), **Charles McNeil** (Calgary Country), **Miles Krowicki** (The Palliser), and **Karen Harris** (The Everest Effort).





Stars of the Month

LEFT: Stars of the Month of the D/FW Chapter of MPI are **Kristi Holloman** (J&S Audio Visual), **Peg Wolschon** (Kerrville Bus Co.) and **Pat McCain, CMP** (Krisam Group). A new recognition program recognizing chapter members for involvement in chapter committees and special programs, "Stars of the Month" will be announced during monthly programs. All Stars of the Month will be eligible for a special drawing for two educational scholarship awards to attend the MPI International Conference or other MPI educational opportunities.

RIGHT: **Stacie Sherere** (Harvey Hotel), **Debbie Kelley** (Human Dynamics, Inc.) and **Jo S. Smith** (Del Lago) were among the new members and guests at the January meeting.

*Photos by
Mark Lazarow Photography*



BELOW: **Fred Kneiberg, CMP** (AFK & Associates, Inc.) welcomes new members **Kathy Senese** (Omni Hotels), **Diane Wilson Grayson** (NAWIC), **Erin Donohue** (Omni Hotels) and **Sy Retsky** (National Contract Management Association)



THANK YOU!

Many thanks to the individuals and companies whose time, talents, and expertise contributed to the enjoyment of the January meeting.

A big thank you to **Tomas De la Mata**, director of catering at the **Fairmont Hotel**.

Ginny Paxton of **Ginny's Gifts** and **Sandy Galloway** of the **Canadian Consulate** provided the centerpieces.

Ron Johnson of **AVW/Fairmont Hotel** provided audiovisual services.

Thanks to **Diana Bergdahl** and **Partners from Calgary and the Canadian Rockies** for the program personalities, **Jamie Clarke** and **Alan Hobson** (The Everest Experience).

Committee chairs for the January meeting: **Marsha Singer** (The Executive Connection), **Deborah Shaw** (CityPlace Conference Center) and **Pamela Jenkins** (Dallas Cowboys Cheerleaders.)

**President's Message—
Winter Retreat**
continued from page 1

ter meetings through our new "Stars of the Month" program honoring members involved in committees. We are at a chapter high for membership of 635 and the message is clear—you benefit from involvement!

• Incentives for those wishing to pay for monthly chapter meetings in advance will be announced soon!

• An Executive Workshop this month rolls out a new Competency Based Degree program.

• An Internship program with 28 students seeking positions is in progress.

• We passed a balanced budget to increase educational opportunities and make more scholarship funds available for our members.

• Marketing opportunities in the *CURRENT* will be a new focus to capitalize on the exposure generated by the "Outstanding Newsletter of the Year, 1994-95," and freeing up some capital to provide new professional educational benefits.

• In response to many members' requests to conserve time, energy and resources, the Board decided to combine our fundraisers for next year. More specific plans to come.

While we accomplished this mountain of work, we also enjoyed the hospitality of the Plantation Inn on the Lake Granbury and as guests of owners, Dutch and Brenda Wilkinson on the deck of their home overlooking the lake.

From feeding longhorn cattle to exploring the fascinating shops on the historic square of Granbury, we had a great "taste" of Granbury. Dan and Beverly Williams catered a warm and hearty "country breakfast."

"Henington's Texas Cafe" and Diane Rawls' "Merry Heart Tearoom" served cuisine with such flair and flavor—the food alone is worth the trip! Their shops with a menagerie of wonders then added an irresistible temptation! We are deeply appreciative of their wonderful hospitality!

And have I mentioned what an exceptional, mature and balanced Board of Directors serve you?

It is such a privilege to work with these outstanding professionals to provide the leadership you deserve and to challenge you to exceed expectations with a *Commitment to Excellence!*

Commitment
to
Excellence

D/FW	
'95	MPI
	'96

Exceeding Expectations!



It's the perfect way to go at the new Waterfront Hilton Beach Resort...overlooking 8 1/2 miles of the widest, whitest and sandiest beach in Southern California.

21 meeting and function rooms, 14,000 square feet in all, including a Grand Ballroom, plus 11 boardrooms overlooking the Pacific. All high-tech, high-styled, and four-diamond rated...with your own meeting services manager to make sure your meeting runs smoothly from start to finish.

300 spacious oceanfront rooms, each with private balcony. Concierge floors with private check-in and special lounge.

For recreation, there's swimming in pool or ocean, sunbathing, surfing and sailing, tennis, beach hiking, bike riding, kite flying, golfing nearby, and our private fitness center and spa.

Close to the best of Los Angeles and Orange County, you'll find the Waterfront Way the perfect way for your next meeting.

Ask about our hotel video.

The Waterfront
Hilton
Beach Resort

On Southern California's Best Beach

800/822-7873 • 714/960-7873
21100 Pacific Coast Hwy,
Huntington Beach, CA 92648

New Pavilion adds
6000 sq. ft.
of meeting and
exhibition space





Stress Relief at Winter Retreat

Members of the D/FW Chapter Board of Directors line up for domino-style stress relief at the board's winter planning retreat. Pictured at Plantation Inn on the Lake at Granbury are **Gail Lemaire** (The Adolphus Hotel), **Susie Carr, CMP** (Annuity Board of the SBC), **Phyllis Firebaugh, CMP** (Chapter President), and **Jan Pollard** (Omni Hotels National Sales Office).



Out of a job?

Looking for a new challenge?

Seeking a qualified applicant to fill a position?

Check out D/FW MPI's Job Bank!

To list your resume with the Job Bank, send

- a note specifying your interest (hospitality/sales, hospitality/operations, meeting planning, temporary/contract work or internships)
- a minimum of five (5) resumes per interest category
- a check or money order for \$20 (for MPI D/FW chapter members) or \$30 (for non-members) made payable to MPI D/FW Chapter

Send these items to:

Traci Bower
Chair, D/FW MPI Job Bank
P.O. Box 741208
Dallas, TX 75374-1208

Job Bank Phone Line:
214-868-2908

All inquiries are confidential.

D/FW MPI's
JOB BANK

Professional Growth Awards

The PGA coffers need restocking after the PEC!



Help support the PGA—and perhaps win a fun prize!—Look for the gals in brightly colored caps and purchase PGA “opportunities” at each monthly meeting. \$1 each, or 6 for \$5.

PGA . . . providing educational scholarship assistance for D/FW Chapter members

For more information contact

PGA Chair Sheryl Kuhn (Harvey Home Office), 214-788-0001 · FAX 214-687-0357

Get Your Message Before Key Meeting Professionals

Want to reach more than 700 meeting professionals—monthly!—and increase your company's recognition among professionals throughout the meetings industry?

Then you should advertise in the **CURRENT**, the newsletter that chronicles the activities of the D/FW Chapter of Meeting Professionals International!

A sponsorship advertisement—a full page on a yearly contract—will bring your company a full-page ad on the inside back cover, plus prominent visibility on the front page!

People remember what they see and read. Don't miss this opportunity to showcase your business or service through the **CURRENT**!

CURRENT Advertising Rates

SIZE	PER ISSUE	YEARLY RATE	MEASUREMENTS
Full Page	\$500	\$250	7 1/2" x 9 9/16"
Two-Thirds Pg. Hor.	\$400	\$200	7 1/2" x 6"
Two-Thirds Vert.	\$400	\$200	5" x 9 9/16"
Half Page Hor.	\$300	\$150	7 1/2" x 4 1/2"
Half Page Vert.	\$300	\$150	3 3/4" x 9 1/4"
Quarter Page Hor.	\$150	\$ 75	3 3/4" x 4 1/2"
Quarter Page Vert.	\$150	\$ 75	7 1/2" x 2 1/4"
Business Card Hor.	\$100	\$ 50	3 1/2" x 2"
Business Card Vert.	\$100	\$ 50	2" x 3 1/2"

CURRENT is published monthly, 12 months annually, by the Dallas/Fort Worth chapter of Meeting Professionals International. **CURRENT**, the primary information source for members of the D/FW Chapter of MPI, is circulated among more than 700 individuals and companies interested in the field of meeting planning.

Rates are based on camera-ready copy. Special rates are available for advertisers who contract space three and six times per year.

Mail or deliver camera-ready copy to **CURRENT** editor, Gracie Hatfield Hilton • 3020 Glasgow Court • Arlington, TX 76015.

To place ads:
Contact **CURRENT** advertising chair

Kristi Hollomon

J&S Audio Visual, Inc.
3373 Towerwood Drive
Dallas, TX 75234-2316
214-241-5444
FAX 214-247-2590



Kristi Hollomon
Advertising Chair

The **CURRENT** is the primary information resource for members of the D/FW Chapter of MPI.

- published monthly
- issued mid-month
- closing date: 15th of the month prior to the issue in which the ad will appear
- rates are for camera-ready copy
- payment in full & camera-ready artwork are due with the advertising contract

FULL
PAGE

business
card—
vertical or
horizontal

2/3
page
horizontal

2/3
page
vert.

1/2
page
horizontal

1/2 page
vertical

1/4
page
horizontal

1/4
page
vertical

Ask about the new
MPI Classifieds
—your opportunity to
get your message across for
as little as \$20!

New Name Reflects Scope of Responsibility

'Marketing' Added to Public Relations Committee Name

The Board of Directors recently voted to add the term *marketing* to *public relations* to indicate the extensive scope of the D/FW Chapter's Public Relations Committee work. Vice President of Public Relations/Marketing Dana Nickerson, CMP (Square One Productions) oversees PR/Marketing efforts on behalf of the chapter.



D. Nickerson, CMP
Vice President/
P.R./Marketing

Nickerson is responsible for assigning directors to oversee these areas of chapter management: newsletter, advertising, community relations and services, government affairs and chapter of the year book.

"Public Relations/Marketing works with all aspects of our chapter. We interface with all other committees in their efforts to educate, inform and enhance member benefits," Nickerson said. "Communication within our membership and in our community helps our industry."

Newsletter

The newsletter committee is responsible for producing the *CURRENT*, the chapter newsletter, 12 times a year. This is an important communication tool for our chapter membership.

Edited by Gracie Hilton (The Write Stuff) since 1992, the *CURRENT* was named Newsletter of the Year last year by the international office of MPI.

Mark Lazarow (Mark Lazarow Photography) has been volunteering his services as official MPI photographer since 1992. His affiliate company, Custom Video Services, now videotapes each meeting.

The entire membership is invited to contribute articles, photos or story ideas to the *CURRENT*.

Advertising

The advertising committee, headed by Kristi Holloman (J&S Audio Visual) offers unique advertising opportunities to both members and non-members.

"Statistics show that 83% of MPI members use other MPI members in business over non-members," Holloman said. "The *CURRENT* is a terrific advertising value because it's mailed to more than 700 meeting professionals every month—who often pass it on to others in the industry."

Holloman is striving to secure more sponsorship ads, and is pleased to announce the *CURRENT*'s newest advertising opportunity—the MPI Classifieds, offering members an opportunity to promote and inform members in a special forum for as little as \$20 a month.

For more information about advertising in the *CURRENT*, see page 12.

Community Relations

The community relations committee is assigned the goal of creating awareness of the meeting industry in the Dallas/Ft Worth community.

"Consider our buying power as a chapter: 57% of our members plan meetings for corporations and 20% for associations. Fourteen % are independent and 9% are employed by hospitals, universities, government or multi-mangement companies," Nickerson said.

"Each planner's average budget is an estimated \$1.2 million. Collectively we spend more than \$243 million on meetings per year," she said. "It is critical to educate the community of our industry and our impact. We want to develop special community projects such as industry exhibits, job fairs, etc. in those efforts."

The D/FW Chapter's major community services project is The Kids Charity Ball. "This project offers volunteers a hands-on opportunity to learn about fundraising and special event productions," says TKCB Public Relations Committee Chair Helen Schneider-Lamey (The Schneider Group). "We have a large database of media contacts and are looking for volunteers to work in this important area."

Through TKCB, Chair Patti Wilke, CMP, and her committee have created a new awareness of our industry while also raising thousands of dollars for children's charities (see more about Community Services on page 15).

Community Services

The Community Services Committee is responsible for continuing and establishing new community service projects for the chapter. Four charities are currently beneficiaries of these efforts: Give Kids the World, Love for Kids, Trinity Ministry to the Poor and North Texas Food Bank.

Stephanie Davis-Schroeder (ITT Sheraton), immediate past committee chair, seeks a new leader for this important area. "It is a rewarding opportunity to interact with MPI and give back to the community at the same time," says Davis-Schroeder

Chapter of the Year Book Committee—Chapter Historians

The Chapter of the Year Book Committee is responsible for coordinating and compiling a notebook representing our chapter throughout the year to submit for the coveted Chapter of the Year Award—the D/FW Chapter has compiled a record three wins!

"It's a fun job and an incredible way to learn all about our chapter," says former committee chair, Linda Sergeant (Bill Reed Decorations), who is also looking for volunteers to serve in this area.

Government Affairs

Headed by Don DeFeo (Medallion Hotels), the Government Affairs Committee focuses on local, state and national government as it relates to the meetings industry.

Foster is D/FW Rep MPI Prepares for Legislative Action Day in Washington March 7

Steven Foster (Gray Line of Dallas/Fort Worth) will represent the D/FW Chapter of MPI during the meeting industry's Legislative Action Day (LAD) March 7 in Washington, D.C.



Steven Foster
Gray Line of DFW

Foster, the chapter's government affairs liaison, also attended last year's LAD—one of more than 150 meeting and convention industry delegates from six associations who participated in LAD '95

Three major issues will be brought to Capitol Hill. The number one issue is the establishment of the National Board and the National Tourism Organization to establish the framework for a public/private partnership to replace USTTA.

Issues two and three are business expense deductibility and music licensing.

Greg Pynes (Town of Addison) was the chapter's 1995 government affairs liaison and attended LAD '95, along with several other members of the D/FW Chapter. Pynes will attend LAD '96, representing Addison.

The purpose of LAD is to educate Congress on key issues affecting the meeting and convention/hospitality industry.

A total of 215 scheduled visits were made to congressmen and senators, an increase from the 55 calls and visits made in 1994.

"The growth of Legislative Action Day mirrors the growth and importance of the meeting industry's involvement in public policy issues at all levels," says Edwin L. Griffin, CAE, MPI Executive Vice President/CEO. "Leadership in politics is as important to our members and our industry as any single business activity in which we are involved."

Cody Plott, vice president-sales for Hyatt Hotels Corporation, will serve as Master of Ceremonies for the event.

"The hospitality industry has been too passively involved in assisting our positions to the Congress," says Plott. "The Meeting Industry's Legislative Action Day 1996 will hopefully help expand the understanding of the threats to our industry."

"I'm delighted that Cody has accepted this leadership position for our LAD," says David Kliman, CMP, MPI President. "He brings a wealth of experience and a personal style which is a winning combination for success in Washington."

Pamela Sederholm, president of Sederholm Public Affairs, Alexandria, Virginia, will provide professional consulting services for the event. She will develop a Congressional contact list, prepare the official briefing paper, as well as materials on effective lobbying and communication techniques for participants.

Legislative Action Day sponsors include: Hotel Washington, Hyatt Regency Washington Capitol Hill, Grand Hyatt Washington, Stouffer Renaissance, Stouffer Mayflower, Sheraton Washington, American Airlines, Delta Air Lines, Northwest Airlines, and US Air.



News Briefs

Denmark is MPI's Seventh European Chapter

MPI has approved the charter for the Denmark Chapter charter, the seventh MPI chapter in Europe, brings the total number of the association's chapters to 55.

The former MPI Denmark Club was created in April 1994. MPI Denmark has 52 members, with 27 planners and 25 suppliers.

The European Bureau of MPI was established in 1991. MPI now has more than 500 members in 20 European countries. MPI's other European chapters are in Belgium, Germany, Italy, Sweden, The Netherlands and the U.K.

MPI Announces New P.R. Campaign

"Changing the Role of the Meeting Industry" is the theme of MPI's new Public Relations campaign.

Public Relations manuals bearing this theme have been distributed to each of MPI's 54 chapters and one club, emphasizing that it is time for meeting professionals to be recognized as an integral part of management teams in order to impact an organization's strategic and business plans.

Today's meeting professionals are responsible for approximately 1,019,600 meetings per year. These professionals represent every component of the meeting planning process such as executive assistants, travel agents, and marketing/communications managers just to name a few.

Meeting Professionals International's Public Relations Manual—a guideline to represent MPI to the press, individual communities and potential members—is a resource for each chapter Public Relations liaison.

MPI Publishes 1996 Bookstore Catalog

Meeting Professionals International (MPI) announces the publication of its 1996 Bookstore catalog. More than 40 new items have been added to this premier reference library which has been distributed to 13,600 members across the globe.

This extensive collection of meeting resources cover such subjects as return on investment, meeting management, seminar and workshop development, trade show advice, international issues, sales and marketing tools, small business, legal issues, leadership and management, professional development, and presentation skills.

To obtain a copy of MPI's 1996 Bookstore catalog, call the Resource Center at 214-712-7743.

COMMUNITY SERVICE



The Kids Charity Ball

March 30, 1996

Great Hall of the
International Apparel Mart

Featuring the best live auction EVER ...

• **1955 Buick Special from the private collection of Bill Barrett**

• Evening of elegance highlighted by an exclusive dinner for ten in the Queen Elizabeth Suite of the Adolphus Hotel, prepared by five star award-winning chef William A. Koval

• Super Bowl XXVII Official Game Ball autographed by many Dallas Cowboy stars including Troy Aikman, Michael Irvin, Emmitt Smith & Coach Jimmy Johnson

ENTERTAIN YOUR CLIENTS IN STYLE ...

Gourmet dining experience

Entertainment

Incredible ambience

Dancing

TREAT THEM TO AN EVENING THEY'LL NEVER FORGET ...

Live auction including a classic car, Super Bowl autographed football and an exclusive dinner for ten at the Adolphus!

Silent auction with over 200 items featuring fantastic hotel & travel packages at great values!

Drawing for a six night trip to Italy!

Presentation of the first annual Bill & Angela Barrett Award for Loving Kids!

AT THE KIDS CHARITY BALL!

Host a table (\$700) or buy individual tickets (\$75) for your clients ... they'll be impressed and excited to be a part of the most exciting event of the year!

JOIN THESE **KIDS CHARITY BALL** SPONSORS AND REAP THE MANY REWARDS:

(as of 1/19/96)

PLATINUM SPONSOR - \$5,000

Addison Conference & Theatre Centre

GOLD SPONSOR - \$2,500

SABRE Travel Information Network

BRONZE SPONSOR - \$1,000

H. D. Vest Financial Services
Irving Convention & Visitors Bureau
ITT Sheraton
Steve Kemble Event Design
Krisam Group

For information call: Stephanie Davis-Schroeder (ITT Sheraton) at 214-980-4934 or Pat McCain, CMP (Krisam Group) at 214-458-8692

The Kids Charity Ball is a gala evening sponsored by the D/FW Chapter of MPI and benefits underprivileged and terminally ill children. For additional information, contact Patti Wilke, CMP at 214-361-7789.

MPI

MEETING PROFESSIONALS INTERNATIONAL®

Dallas/Fort Worth Chapter
4020 McEwen • Suite 105
Dallas Texas 75244



DALLAS/FORT WORTH CHAPTER

MPI

MEETING PROFESSIONALS INTERNATIONAL®

Meeting Professionals International is the world's largest association of meetings professionals with more than 13,600 members in 44 countries and 55 chapters and one club. MPI's mission is to provide educational opportunities and recognition for those in the meetings industry. The association is committed to excellence in meetings, continuous international growth, research, a strong chapter network and high ethical standards.

MPI International Headquarters
INFOMART
1950 Stemmons
Suite 5018
Dallas, Texas 75207-3109
214-712-7700

MPI
Dallas/Fort Worth Chapter
4020 McEwen • Suite 105
Dallas Texas 75244
214-233-9107
FAX 214-490-4219
E-Mail: 74742,1725 (Compuserve)
or
INTERNET:74742.1725@compuserve.com

Officers

President

Phyllis Firebaugh, CMP
Chapter President
214-407-0479

President-Elect

Mary Lynn Novelli, CMP
Sterling Hotels & Resorts
214-402-4875

Immediate Past President

Diane Smith, CMP
Alcon Laboratories, Inc.
817-551-8077

Vice President/Administration

Linda Sergeant
Bill Reed Decorations, Inc.
214-823-3154

Vice President/Education

Greg Pynes
Town of Addison
214-450-6202

Vice President/Finance

Charlotte Merrill-Davis, CMP
Event Source Professionals
817-267-6698

Vice President/Membership

Sally Goldesberry, CMP
Meetings & Exhibit Specialists
214-407-0755

Vice President/Programs

Michelle Carter
Southfork Event & Conference Center
214-442-7800 x281

Vice President/Public Relations/Marketing

Dana Nickerson, CMP
Square One Productions
214-343-8067

Board of Directors

Planners

Susie Carr, CMP
Annuity Board of the SBC
214-720-0511

Sherri Cook, CMP

Sherri Cook & Associates
214-732-9396

Tracey Smith

Computer Language Research, Inc.
214-250-7404

Deborah Wheeler, CMP

Society of Petroleum Engineers
214-952-9311

Suppliers

Traci Bower
Reunion Ranch
214-271-2666

Gail Lemaire

The Adolphus Hotel
214-742-8200

Jan Pollard

Omni Hotels National Sales Office
214-444-0044

Kathi Thompson

The Inn on the River
214-424-7119

CURRENT Staff

Editor

Gracie Hatfield Hilton
The Write Stuff
Ph. & FAX 817-467-7439

Advertising Director

Kristi Hollomon
J&S Audio Visual, Inc.
214-241-5444

Proposed Chapter Officers and Directors for 1996-97

Meeting Professionals International

Dallas/Fort Worth Chapter

OFFICERS

Mary Lynn Novelli, CMP - President (Sterling Hotels & Resorts, Regional Director Of Sales)



Joined MPI: 1988
 President-Elect, 1995-96
 Vice President/Public Relations - 1994-95
 PEC Cookbook Committee, Chair: 1995-96
 Mentor Program, Chair: 1995-96
 D/FW Chapter Supplier of the Year Nominee: 1994-95
 The Kids Charity Ball: Chair 1993-94; Advisor '94-95; Celebrity Bear Chair '94-95
 Community Service Committee: 1992-93, 1993-94, 1994-95
 Public Relations Committee: 1992-93, 1993-94, 1994-95
 Educational Research Foundation, Fund-raiser Committee: 1993-94
 Board Member: 1993-94
 Program Committee: 1991-92, 1992-93, 1993-94
 Chapter of the Year Committee: 1992-93, 1993-94
 Administration Committee: 1992-93

Gregory Pynes - President-Elect (Town of Addison, Manager ACTC)



Joined MPI: 1991
 Vice President/Education: 1995-96
 Board Member: 1994-95
 Director of Education: 1994-95
 Governmental Affairs Liaison: 1992-93, 1993-94, 1994-95
 Governmental Affairs Committee, Chair: 1992-93, 1993-94
 Community Service Committee: 1993-94, 1994-95
 The Kids Charity Ball, Chair-Elect: 1995-96
 The Kids Charity Ball, Co-Chair: 1994-95
 The Kids Charity Ball Silent & Live Auction, Chair: 1993-94
 The Kids Charity Ball Committee Advisor: 1994-95
 Basic & Advanced Meeting & Convention Management/Richland Community College: 1994-95

Linda Sergeant - Vice President/Administration (Bill Reed Decorations, Inc., Sales Executive)



Joined MPI: 1990
 Vice President/Administration: 1995-96
 D/FW Chapter MPINet Liaison: 1995-96
 PEC Volunteer: 1995
 Chapter of the Year Committee, Chair: 1995-96
 Chapter of the Year Committee, Co-Chair: 1994-95
 Chapter of the Year Committee: 1993-94
 Program Committee: 1992-93, 1993-94, 1994-95
 Membership Committee: 1992-93, 1993-94
 Community Service Committee: 1990-91; Chair: 1994-95
 Public Relations Committee: 1992-93

Susie Carr, CMP - Vice President/Education (Annuity Board of the SBC, Meetings & Travel Coordinator)



Joined MPI: 1984
 Board Member: 1995-96
 "Walk A While In My Shoes" Committee: 1994-95; Chair: 1995-96
 Resource Committee: 1996
 Richland Task Force for Curriculum: 1992-93, 1993-94
 MPI Phone Tree Committee: 1991-92, 1993-94
 "HOW TO" Breakfast Speaker: 1992-93
 Welcoming Committee: 1990-91
 Buddy Committee: 1989-90
 Community Service Committee, Chair: 1987-88
 Board Member: 1987-88
 D/FW Chapter Planner of the Year Nominee: 1988

Dana Nickerson, CMP - Vice President/Public Relations & Marketing (Square One Productions, President/Owner)



Joined MPI: 1990
Vice President/Public Relations: 1995-96
The Kids Charity Ball, Advisory/Executive Committee: 1994, 1995, 1996
The Kids Charity Ball, Co-Chair: 1994
The Kids Charity Ball, PR Committee Chair: 1994-95
Community Awareness Committee, Chair: 1994-95
ACE Charity Event, Golf Tournament Committee: 1992

Sally Goldesberry, CMP - Vice President/Programs (Meetings & Exhibits Specialists, President)



Joined MPI: 1979
Vice President/Membership: 1995-96
PGA Committee, Chair: 1994-95
Education 2000 Task Force: 1994-95, 1995-96
Program Committee: 1992-93, 1993-94, 1994-95
Executive Workshop Committee: 1993-94
Membership Committee: 1993-94
Arizona SunBelt Chapter: Outstanding Member of the Year 1992; Board of Directors 1992; Program Committee, Chair 1991-92; MPI International Board of Directors 1982-83, 1983-84; MPI International Chapter Relations Committee, Chair 1983-84; MPI International Annual Conference Denver Host Committee, Program Chair 1982;
Rocky Mountain Chapter: Board of Directors 1981-82, 1982-83, 1983-84; Program Committee, Chair 1981-82; Treasurer 1981-82

Jan Pollard - Vice President/Finance (Omni Hotels-Dallas National Sales Office, National Director of Sales)



Joined MPI: 1985
Board Member: 1994-95, 1995-96
Executive Workshop Committee, Chair: 1993-94
Program Committee: 1992-93, 1993-94, 1994-95, 1995-96
Table Talk Chair: 1994-95, 1995-96
Education 2000 Task Force: 1994-95, 1995-96
Resource Committee, Chair: 1994-95, 1995-96
MPI Foundation Fund-raiser: 1994-95

Michelle Carter - Vice President/Membership (Southfork Event & Conference Center, National Sales Mgr.)



Joined MPI: 1990
Vice President/Programs: 1995-96
Vice President/Administration: 1994-95
Vice President/Education: 1993-94
MPI International Editorial Advisory Board/Meeting Manager: 1994-95, 1995-96
Education 2000 Task Force: 1994-95, 1995-96
The Kids Charity Ball Committee: 1994-95
Lone Star Link-Up Committee: 1993-94
Education Committee: 1991-92, 1992-93, 1993-94
Membership Phone Tree Committee: 1992-93
PGA Committee: 1991-92, 1992-93
"How To" Breakfast Series Committee: 1991-92; Chair, 1992-93
D/FW MPI Sports Classic Fund-raiser - 1992-93

Phyllis Firebaugh, CMP - Immediate Past President



Joined MPI: 1985
President: 1995-96
President-Elect: 1994-95
The MPI Foundation Fund-raiser, Chair: 1994-95
Awards Committee: 1987-88, 1992-93, 1993-94, 1994-95
The Kids Charity Ball Committee: 1993-94
Chapter of the Year Committee: 1993-94
Nominating Committee: 1990-91, 1991-92
Program Committee: 1986-87, 1987-88, 1991-92
Vice President/Public Relations: 1989-90
Community Service Committee: 1989-90
Community Awareness Committee: 1989-90
Board of Directors: 1987-88

BOARD MEMBERS/SUPPLIERS

Dean Conwell - Board of Directors/Supplier (Irving Convention & Visitors Bureau, Natl. Sales Manager)



Joined MPI: 1993
The Kids Charity Ball, Co-Chair: 1995-96
The Kids Charity Ball, Co-Chair Elect: 1994-95
MPI P.E.C. Volunteer: 1994-95
MPI Foundation Fund-raiser Committee: 1995-96

Joe Diaz - Board of Directors/Supplier (Delta Air Lines, Sales Representative)



Joined MPI: 1995
MPI International Marketing Liaison: 1995-96
P.E.C Cookbook Committee, Chair/Solicitation Committee: 1994-95
Hospitality Committee, MPI P.E.C.: 1994-95
PO'D Program, Co-Chair - POD 8: 1995-96

Cindy Hamilton - Board of Directors/Supplier (CityPlace Conference Center, Director of Sales)



Joined MPI: 1992
Rising Star Award Recipient: 1994-95
Director of Programs: 1995-96
Program Committee Newsletter Liaison: 1994-95
The Kids Charity Ball Program Committee: 1994-95
Awards Committee Member: 1993-94
Program Committee Member: 1992-93, 1993-94

Kristi Hollomon - Board of Directors/Supplier (J&S Audio Visual, Inc., Dir. Business Cntrs./Hotel Sales)



Joined MPI: 1994
Membership/Phone Tree Committee: 1994-95
Membership/Involvement Committee: 1994-95
The Kids Charity Ball/Program Publication Co-Chair: 1994-95, 1995-96
Public Relations/Newsletter Liaison Co-Chair: 1994-95
Current Advertising Director: 1995-96
Current "Opinion, Please!" Column: 1995-96
P.E.C. Cookbook Committee, Co-Editor: 1995

Bruce Wolpert, CMP - Board of Directors/Supplier (Hilton Hotels & Resorts, National Sales Director)



Joined MPI: 1994
Membership Committee: 1995-96
Membership PhoneTree Committee, Chair: 1995-96
The Kids Charity Ball Committee: 1995-96

Peg Wolschon, CTP - Board of Directors/Supplier (Kerrville Bus Company, Director of Sales & Mktg.)



Joined MPI: 1988
Program Committee: 1992-93, 1993-94, 1994-95, 1995-96
Membership Committee: 1992-93
The Kids Charity Ball Committee: 1993-94, 1994-95, 1995-96
MPI P.E.C. Transportation Committee: 1994-95
MPI Foundation Fund-raiser Committee: 1995-96
MPI Mentor Program: 1996

BOARD MEMBERS/PLANNERS

Cheryl Beasley, CMP - Board of Directors/Planner (SABRE Travel Info. Network, Conference Mgr.)



Joined MPI: 1992
The Kids Charity Ball, Co-Chair Event Planning Committee: 1994-95
The Kids Charity Ball, Advisor/Event Planning/Entertainment: 1995-96
MPI P.E.C. Volunteer, Meet & Greet Committee: 1994-95
MPI P.E.C. Volunteer/Vancouver -Dallas Promo. Team: 1994-95
Education 2000 Task Force: 1994-95, 1995-96

Michael Craddock, CMP-Board of Directors/Planner (American College of Emergency Physicians, Planner)



Joined MPI: 1994
Executive Workshop Committee, Chair: 1995-96
The Kids Charity Ball, Decor Committee: 1995-96
"Walk a While in My Shoes" Program: 1995-96
CMP University Program: 1995-96
MPI P.E.C. Volunteer/Vancouver -Dallas Promo. Team: 1994-95
MPI P.E.C. Host Committee Volunteer: 1994-95

Steven Foster - Board of Directors/Planner (Gray Line of Dallas/Fort Worth, VP Sales & Marketing)



Joined MPI: 1991
Government Affairs Liaison: 1995-96
Legislative Action Day Representative: 1994-95, 1995-96
Program Committee: 1995-96
The Kids Charity Ball Committee: 1994-95, 1995-96
MPI P.E.C. Transportation Committee: 1994-95
MPI P.E.C. Tour Committee, Chair: 1995
Public Relations Committee: 1993-94
Richland College Program/Speaker: 1994

Melissa Parks, CMP-Board of Directors/Planner (American Fire Sprinkler Assn., Mgr. of Education & Meetings)



Joined MPI: 1991
Brown Bag Program Committee: 1994-95
Richland College Program/Speaker: 1995
MPI P.E.C. Hospitality Committee: 1995
P.E.C. Cookbook Committee: 1995
Program Committee: 1991-92, 1992-93
The Kids Charity Ball Committee: 1992-93

Tamara Quilty - Board of Directors/Planner (Sprint Events Marketing, Program Manager)



Joined MPI: 1994
MPI Internship Program (Joint with TXACOM): 1996
"Walk a While in My Shoes" Program Committee: 1994-95, 1995-96
MPI P.E.C. Amenities Committee: 1994-95
Membership Committee: 1994-95
Membership Phone Tree Committee: 1994-95

Tracey Smith - Board of Directors/Planner (Computer Language Research, Marketing Specialist)



Joined MPI: 1991
Board of Directors: 1995-96
Mentor Program: 1995-96
Chapter of the Year Committee: 1995-96
Director of Communications: 1994-95
Newsletter Committee & Writer: 1994-95
The Kids Charity Ball Invitation Committee: 1993-94, 1994-95, 1995-96
Public Relations Committee: 1992-93, 1993-94, 1994-95



MPI
MEETING PROFESSIONALS INTERNATIONAL

February D/FW Chapter Meeting

"Family Fun Fest"

Developing Guest & Family Programs

Thursday, February 22

Bronco Bowl

2600 Fort Worth Avenue

Dallas, Texas 77211

214-943-1777

Orientation 5:30 p.m.—VIP Box Area, Arena
Registration, Kids' Program, Trade Show 6:00 p.m.—Arena
Dinner & Program 7:00 p.m.—Banquet Rooms

—Dress is Casual!—

R.S.V.P. to Joe
by noon, Tuesday, Feb. 20
•phone 214-233-9107
•FAX 214-490-4219
(see FAX insert)
•74742.1725@compuserve.com

Advance Registration \$26
Late Registration \$35
Guest Registration \$30
Ages 12-18 \$26
Ages 4-11 \$13
Ages 3 & under Free

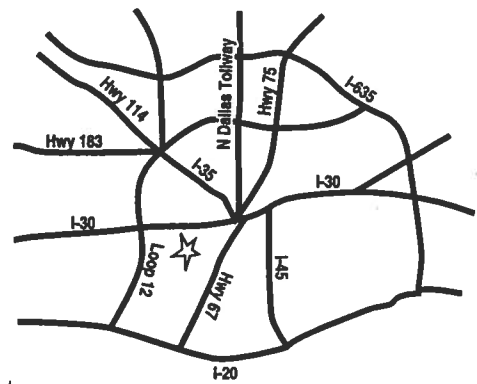
New! FAX Registration!



Complete the form below and FAX to the chapter office to make your reservation for the February chapter meeting.

The top half of this form can be clipped and inserted in your daily planner—for a quick reference about meeting details and directions.

**Directions to
THE NEW BRONCO BOWL**



To RSVP for the monthly chapter meeting,
FAX this form to chapter headquarters: 214-490-4219—by noon, Tuesday, Feb. 20

Member Name _____

Company _____

Phone _____ FAX _____

Member Number _____ I am a Planner _____ Supplier _____ Number of Guests _____

Guest's Name _____

Guest's Company _____ My guest is a: Planner _____ Supplier _____

Guest's Address _____ Guest's Phone _____

Guest's Name _____

Guest's Company _____ My guest is a: Planner _____ Supplier _____

Guest's Address _____ Guest's Phone _____

Handicap Requirements? _____

Special Dietary Requirements? _____

Remember Father Vito's Words!

Do good works ...

Start by selling tickets for the Kids Charity Ball raffle
March 30, 1996

There is no place like Rome (or Florence) ...

Spend six glorious nights in Italy. Compliments of ITT Sheraton Hotels
& Delta Airlines

Thou shalt not steal ...

but, at \$5.00 a ticket, what a deal!

Bless the little children ...

Love for Kids, Give Kids the World, Trinity Ministries to the Poor & North Texas Food Bank

It is better to give than receive ...

but remember there will be prizes for top ticket sales at each monthly meeting
& a grand prize for overall top ticket sales on March 30th

Ask and ye shall receive ...

For tickets and more information call: Jan Pollard (Omni Hotels) 214/444-0044,
O.D. O'Donnell (Nightlife Talent) 214/691-4417 or Esther Wigley (Appointments) 214/788-1702

Go in peace ...

and **SELL, SELL, SELL!**



The Kids Charity Ball

KIDS CHARITY BALL
Raffle Ticket Request Form
Fax to: 214 / 788-0874

Number of Tickets @ \$5.00 each _____

Send to: Name _____

Address _____

Phone Number _____

I am responsible for *full payment* or the return of any *unsold* "Raffle Tickets" on or before
March 30, 1996

Signature

Date