

# CURRENT

Meeting Professionals International

January 1996

Dallas-Fort Worth Chapter

## President's Message

### PEC '95 Called 'Best Ever'

By Phyllis Firebaugh, CMP  
Krisam Hotels & Resorts

What an incredible performance! David Kliman, CMP, president of MPI International, said at the closing dinner of the PEC, "This has been the best ever!"

Repeatedly I heard, "Dallas has raised the bar for the PEC to a whole new level!"

Truly, we did, and each of you should feel a tremendous sense of pride in having accomplished such a feat among our industry peers.



Phyllis Firebaugh, CMP  
D/FW Chapter President

Hundreds of volunteers accepted a *Commitment to Excellence*, worked untold hours, gave of remarkable talent and resources and *exceeded expectations* across the board.

I am proud to be associated with such outstanding professionals as the D/FW Chapter. Many thanks to our sponsors and other participants in a record-setting CMF—organized by D/FW Chapter V.P./Membership Sally Goldesberry, CMP—with many roundtable discussions led by our own members.

Sincere thanks to each of you!

*And, yes, we won again!* The D/FW Chapter won the Award for Excellence in Special Projects, making it our second year for being honored in the category of special projects.

*(continued on page 12)*

## MPI

MEETING PROFESSIONALS INTERNATIONAL®

January D/FW Chapter Meeting

### "Re-Engineering Everest— Taking Improvement to the Top"

featuring Jamie Clarke & Alan Hobson

Thursday, January 25

The Fairmont Hotel

1717 N. Akard Street

Dallas, Texas 75201

214-720-2020

Orientation 11:00 a.m., Executive Room

Reception & Registration 11:15 a.m., outside Regency Ballroom

Luncheon & Program 12 noon, Regency Ballroom

R.S.V.P. to Joe  
by noon, Tuesday, Jan. 23

•phone 214-774-1404

•FAX 214-490-4219

(see FAX insert)

•74742.1725@compuserve.com

Advance Registration \$22

Late Registration \$30

Guest Registration \$25

See page 3 for more details and meeting reservation policy.

# INSIDE

January Meeting Info

3

Last Month's Meeting

10

Surfin' the MPINet

5

Membership News

14

Education News

6

Opinion, Please!

16

PEC/Dallas

8

Supplier of the Year

17

# CURRENT

## MPI

MEETING PROFESSIONALS INTERNATIONAL®

### Dallas/Fort Worth Chapter

#### Newsletter Staff

##### Editor

Gracie Hatfield Hilton  
*The Write Stuff*  
Phone & FAX  
metro 817-467-7439  
e-mail: 75647.22@compuserve.com

#### Vice President/Public Relations

Dana Nickerson, CMP  
*Square One Productions*  
214-343-8067  
FAX: 214-343-6166

#### Advertising Chair

Kristi Hollomon  
*J&S Audio Visual, Inc.*  
214-241-5444  
FAX: 214-247-2590

#### Photographer

Mark Lazarow  
*Mark Lazarow Photography*  
214-380-0985  
FAX: 214-380-1431

#### MISSION STATEMENT

##### MEETING PROFESSIONALS INTERNATIONAL

Meeting Professionals International is the pivotal force in positioning meetings as a primary communication vehicle and a critical component of an organization's success. Meeting Professionals International leads the meetings industry by serving the diverse needs of all people with a direct interest in the outcome of meetings, educating and preparing members for both their changing roles and validating relevant knowledge and skills, as well as demonstrating a commitment to excellence in meetings.

The *CURRENT* is published 12 times yearly for the D/FW Chapter of Meeting Professionals International, the industry's leading educational and networking resource in meetings management. Statements of fact and opinion are the responsibility of individual writers and do not imply collective opinion of the officers or members of MPI.

# Upcoming MPI Events

## CHAPTER MEETINGS

**January 25, Thursday**  
Chapter Meeting  
"Taking Improvement to the Top"  
The Fairmont Hotel  
11:30 a.m.

**February 22, Thursday**  
Chapter Meeting  
"Developing Guest & Family Programs"  
Bronco Bowl  
6:30 p.m.

**March 28, Thursday**  
Chapter Meeting  
International/Gemelli Theme  
Hall of State  
11:30 a.m.

**April 25, Thursday**  
Chapter Meeting  
"ROI"  
Fort Worth  
6:30 p.m.

**May 23, Thursday**  
Chapter Meeting  
Annual Awards Banquet  
The Adolphus  
6:30 p.m.

**June 27, Thursday**  
Chapter Meeting  
"Team Building"  
Southfork Ranch  
6:30 p.m.

**July 18, Thursday**  
"Natural Resources"  
Venue TBA  
11:30 a.m.

## EDUCATIONAL OPPORTUNITIES

**January 17**  
Brown Bag Luncheon  
"Job Bank Benefits"  
Venue TBA  
11:30 a.m.-1:00 p.m.

**February 13**  
"How to" Breakfast  
"MPINet Workshop"  
Venue TBA  
7:30-11:30 a.m.

**February 15**  
Executive Workshop  
"College Bound"  
Venue TBA  
Time TBA

**February 28**  
Brown Bag Luncheon  
"Preparing for the CMP"  
Harvey Hotel Downtown  
11:30 a.m.-1:00 p.m.

**March 5-April 23**  
"Walk a While in My Shoes"  
Educational Seminars  
Tuesday evenings  
Various Venues  
5:30-7:30 p.m.

NOTE: Chapter meeting plans are subject to change.  
Check the *CURRENT* each month to confirm details.

For more information about association events, call MPI Headquarters, 214-712-7700.

## January Meeting Highlights

# 'Re-Engineering Everest—Taking Continuous Improvement to the Top' at The Fairmont

By Pamela Jenkins

*Dallas Cowboys Cheerleaders*

At MPI's January 25 luncheon meeting at The Fairmont Hotel, "adventurers" Jamie Clarke and Alan Hobson will recount their attempt to scale Mount Everest without bottled oxygen, a feat accomplished by only 41 people!

In their presentation, "Re-Engineering Everest—Taking Continuous Improvement to the Top," this Canadian team will parallel challenges faced in climbing Mount Everest to those encountered in the meeting planning industry.

They will address such subjects as • coping with cataclysmic change; • doing more with less; • overcoming uncertainty and fear; and • teamwork at the top.

By sharing their gripping stories of the 1991 and 1994 Expeditions to Mount Everest, Clarke and Hobson show how continuous improvement enabled them to achieve dramatically improved results with half the budget, half the personnel, and no bottled oxygen.



Jamie Clarke



Alan Hobson

New member orientation will begin at 11:00 a.m. in the Executive Room. Registration and the reception will begin at 11:15 a.m. outside the Regency Ballroom on the second floor.

The luncheon and program will begin at 12:00 noon in the Regency Ballroom.

Limited valet parking is available for \$3. Self-parking at First Baptist Church (corner of Ross and Akard) is also \$3.

Continuing Education Unit (CEU) credit forms will be available.

January Committee members are Marsha Singer (The Executive Connection, Inc.), Deborah Shaw (CityPlace Confer-

ence Center), and Pamela Jenkins (Dallas Cowboys Cheerleaders).

Special thanks to Partners from Calgary and Canadian Rockies for providing this great adventure for our January meeting!



### Meeting Reservation & Attendance Policy

Registration fees will be collected at the door; advance payments are not accepted. If paying by check, please have check completed before approaching registration table. Reservations must be made by RSVP deadline for advance registration fee to apply. Late reservations and walk-ins will be accepted on a SPACE AVAILABLE basis. Cancellations must be made by the RSVP deadline. **No-shows will be billed.** Members are responsible for "no-show" charges for their guests. Guests are limited to attending three meetings per year (spouses are an exception).

### Alcohol Policy D/FW Chapter of MPI

The D/FW Chapter of MPI recognizes and supports the many legitimate uses of alcoholic beverages in the process of conducting our business and social activities. As a chapter, we also recognize that the use and consumption of alcohol at our functions carries with it the requirement to consume those beverages responsibly and in keeping with our professional code of ethics and conduct. We strongly oppose the abuse and misuse of alcohol. We further support those efforts that seek to inform our members of the issues concerning alcohol use and in offering assistance to any members seeking further information and/or assistance either personally or professionally.

### January Host Facility

## The Fairmont Hotel

Hospitality, luxury, and service with that special Texas flair—the Fairmont Hotel in Dallas. Conveniently located in the Dallas Arts District, The Fairmont is within minutes of corporate headquarters as well as the entertainment filled West End Historic District and cultural activities. Nearby freeways offer quick access to the Dallas Market Center, major shopping centers and both area airports.

With over 70,000 square feet of versatile meeting space—including 24 meeting rooms and two spectacular ballrooms—The Fairmont offers a wealth of options for meeting planners. From executive board meetings to gatherings of 3,300, The Fairmont provides every amenity to make your event an outstanding success. No wonder a recent U.S. Hotel Systems Survey of corporate travel managers named The Fairmont Hotels as the number-one luxury leader in accommodations and service—at competitive rates which reflect exceptional value.

For more than 80 years, the name "Fairmont" has been synonymous with world-class hospitality. As a guest of the Fairmont family, you can always expect the same impeccable service, fine appointments and cosmopolitan atmosphere upon which business and leisure travelers have come to depend.

The flexibility, planning assistance, exceptional facilities and service, along with competitive pricing, put The Fairmont at the top of the list for meetings of all descriptions.

## Editor's Notes

# CURRENTly . . .

When **Jamie Clarke** and **Alan Hobson**—featured speakers at the D/FW Chapter meeting January 25—tackled Mount Everest last spring, they made the attempt without bottled oxygen, a feat only 41 others have achieved.



**Gracie H. Hilton**  
The Write Stuff  
CURRENT Editor

When a teammate developed a life-threatening high-altitude illness, the 1994 expedition to the world's highest mountain ended—just 180 yards from reaching the summit.

But these Calgary-based Canadians—organizers of the 1994 expedition and also members of a 1991 expedition to Mount Everest—plan to try again in 1997.

Situated in the Himalayas on the frontiers of Tibet and Nepal, Mount Everest (29,028 feet) is named for Sir George

Everest, a British surveyor-general of India.

For climbers bent on testing strength and will, Everest's lure is irresistible. Thousands have tried but only a few succeeded. Sir Edmund Hillary of New Zealand and Tenzing Norgay of Nepal first conquered its perilous heights in 1953.

The average Everest expedition takes about five years to organize, not including the years of climbing preparation. The summit—about the size of a cafeteria table—has about one-third the amount of oxygen available at sea level.

The summit is attained by less than half—about 40%—of

the expeditions attempting it.

Clarke's and Hobson's preparation involved a rigorous daily training program. In addition to running, swimming, strength training and practice climbs in the Rockies, they frequently hauled 80-pound packs up the ski jump stairs at Canada's Olympic Park.

What does all this have to do with MPI or any other business association? The effort it takes to tackle Mount Everest is not unlike the effort required to meet the social and economic challenges of the 90s, Clarke and Hobson maintain.

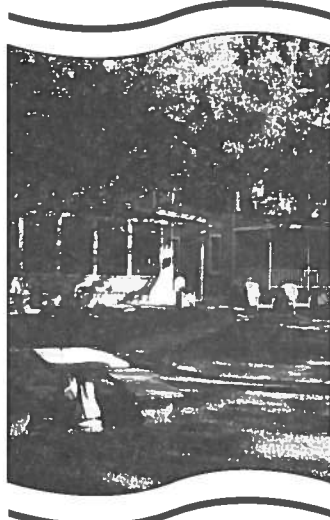
"Climbing Mount Everest is a very intense situation," says Clarke. "You live a lot of life in a short period of time. You don't want to be hanging on a rope off the side of the mountain with any regrets. When you go you must be fully prepared."

"It's the difficulties that make it worth doing," says Hobson. "If it were easy, everyone would do it."

Clarke and Hobson have spoken to numerous North American corporations and associations, including General Motors, Hudson Foods, Strong Funds, Johnson & Johnson, Great West Life, Human Resources Development Canada, Canadian Mental Health Association, Canadian Department of Justice, Mobil Oil, Chevron, Century 21 Real Estate, Nestle and Sony.

Regular *CURRENT* contributors expect this editor to delete the tired old cliché "soaring to new heights of achievement" out of almost every copy submission. For Clarke and Hobson, it's allowed! ☺

—ghh ☺



### INN ON THE RIVER

For meeting information and brochures, contact Kathi Thompson at 214-424-7119  
205 S.W. Barnard St. • Glen Rose, Tx. 76043 • 817-897-2101 • Fax 817-897-7729

## The "Inn" Way To Take Care of Business.

Nestled in the trees along the bank of the Paluxy River, the historic Inn On the River has perfected the art of taking care of business. With a peaceful atmosphere that lacks interruptions, you will find that your work is completed with great efficiency.

- State-of-the-Art Conference Center
- Audio and Video Equipment
- Electronically-Controlled Screen
- Fax Machine, Conference Phone, Copier
- 22 Rooms
- Gourmet Meals
- Tranquil and Creative Haven



## CURRENT Deadlines

Upcoming deadlines for copy and ads for the D/FW Chapter of MPI newsletter, the *CURRENT* —

ISSUE	DEADLINE
Feb. '96	Jan. 19, Friday
March '96	Feb. 16, Friday
April '96	March 15, Friday
May '96	April 19, Friday
June '96	May 17, Friday
July '96	June 14, Friday
August '96	July 19, Friday

Copy is cheerfully accepted early. Because of production schedules, information received after the deadline day will not be included in the newsletter in progress. Late-arriving copy will be included in the next month's issue, if information is still timely.

Please mail 3.5 disk, Windows format—preferably in Microsoft Word or WordPerfect—to Gracie H. Hilton (The Write Stuff), *CURRENT* editor, 3020 Glasgow Court, Arlington, Texas 76015.

To send information electronically—Gracie Hilton  
75647.22@compuserve.com



Linda Sergeant

# Surfin' the MPINet Highway

By Linda Sergeant (Bill Reed Decorations)

*This column explores MPINet, the first global online communications system designed specifically for the meetings industry.*



## What are the online conferences all about?

The conferences are wonderful! Announcements for all upcoming conferences are posted in the MPINet notices that pop up on your screen when you first log on. These are open forums—everyone is invited to participate. A few things to be aware of that make a conference run more smoothly: When you'd like to speak, you "raise your hand" with an exclamation point. "!" When you're finished speaking/typing, type a backslash. "/" Be ready to type when you "!" The scripts are subsequently uploaded to the MPINet library for everyone to read. Recent conferences have included:

- 11/30/95 Zayde's Workshop—"How do I do . . . on the Net."—4th in a series of "how to" workshops
- 11/14/95 Town Hall Meeting—"The White House Conference on Travel & Tourism
- 10/11/95 Meet the Editors—Ellen Beckert, "Women's Issues in the Meeting and Convention Industry."
- 10/4/95 Workshop, Rodman Marymor, CMP, "Doing Business on MPINet, Benefits and ROI for Meeting Planners."
- 9/20/95—Brown Bag Lunch—"Welcome to the Association Meeting Management Special Interest Group"



## Can a committee have an electronic meeting?

Sure. It's easy. Just notify those you wish to be in attendance to be online at a specific time. Then initiate a group conversation and select only those names you wish to join the group. There can be multi-group conversations going on at the sametime, but no one can join your group unless they are invited. If someone in another group invites you to chat, just decline or, better yet, let them know you are in the middle of a meeting and will chat later. You can do this through one-on-one chat. You might also select your "Do Not Disturb" button.



## Who is on the information superhighway?

"Hi, Linda! You asked for Internet addresses to post in your "Surfin' the MPINet Highway" column, so here's mine. We'd like to be included in the MPI D/FW Chapter "surfing" club. I've received leads for my hotels and even booked business through the Internet, so it's a tool I use often with great success. If you have any questions, e-mail me back!

Phyllis Cox (Arlington Convention and Visitors Bureau)—URL Address: <http://www.acvb.org/welcome>  
Thank you, Phyllis! I know there are many more of our members with URL addresses, and I hope they read this and get in touch with me!



## How do I get the word out that I am on the Internet?

Here is a golden opportunity! We are hoping to include a "MPI International Surf Club" section in the 1996 MPI Dallas/Fort Worth Membership Directory. Those listed would, for a nominal fee, have the opportunity to post their URL address and a brief description of their services. All interested parties should contact me.

## D/FW Chapter "Netters"

*As this issue of CURRENT goes to press, D/FW Chapter members among MPINet subscribers include:*

- Ellen Beckert (The Freeman Companies) 74117,244
- Bill Boyd, CMP (Sunbelt Motivation & Travel, Inc.) 73164,2013
- Inga Bowyer (ROI Meetings and Events, Inc.) 74161,114
- Gary Clark (AVW Audio Visual, Inc.) 73210,1377
- Sherri Cook, CMP (Sherri Cook and Associates) 74161,534
- Phyllis Cox (Arlington CVB) <http://www.acvb.org/welcome/>
- Greg Elam (Dallas CVB) 74117,706
- Barbara Fett 74117,654
- Phyllis Firebaugh, CMP (Krisam Group) 74161,645
- Jim Follett, CHSE (InterContinental and Forum Hotels) 74117,545
- Steve Foster (Gray Line DAV El) 74161,523
- Betty Garrett, CMP (Garrett Speakers International) 74117,157
- M.T. Gnadl (Independent Planner) 74161,732
- Sally Goldesberry, CMP (Meetings & Exhibits Specialist:) 74117,121
- Mary Guzman (Omni Mandalay Hotel) 74161,1037
- Gracie Hilton (The Write Stuff) 75647,22
- Sharon Horton (ITT Sheraton) 102217,1057
- John Lee (Yellow Rose Touring) 74161,1131
- Pat McCain, CMP (Krisam Group) 74161,360
- Debbie Meyers (Bravo! Entertainment) 74161,334
- Jim Monroe (Gale Slinger Productions) 74117,745
- Christine Moore (Dallas Fan Fares) 102642,3115
- Dana Nickerson, CMP (Square One Productions) 74161,1027
- Mary Lynn Novelli (Sterling Hotels & Resorts) 72643,2175
- Darla Ogle (HyperGraphics Corporation) 74642,1064
- Virginia Paxton (Ginny's Gifts) 74161,410
- Lodi Palmer, CMP (Meeting Professionals International) 74117,751
- Jan Pollard (Omni Hotels Nat'l Sales Office) 102706,3435
- Greg Pynes (Town of Addison) 74117,702
- Amy Redfearn (Meeting Professionals International) 72662,3505
- Sal Sessa (Events Photography) 102163,2330
- Linda Sergeant (Bill Reed Decorations, Inc.) 74117,705
- Tracey Smith (Computer Language Research) 74161,540
- Hattie Hill-Storks (IPI, Inc.) 74117,700
- Marsha Veach (Meeting Professionals International) 74117,314
- Linda Vest (State Farm Insurance) 74161,255
- Bob Walker (AVW) 74117,644
- Mollie Wallace, CMP (Miller-Freeman) 73422,3300

*Do you have questions you would like to see answered in this column? Please contact Linda Sergeant (Bill Reed Decorations, Inc.), 333 First Ave. Dallas, TX, 75226; FAX: 214-823-3191; CompuServe address: 74117,705.*

## Participants in New Chapter Mentor Program Earn CMP Points

The new MPI Chapter Mentor Program—introduced at the November chapter meeting by Amy Redfean, manager of chapter relations at MPI, and Bill Boyd,



**Fred Knieberg, CMP**  
Mentor Program  
Co-Chair



**Maurine Allen, CMP**  
Mentor Program  
Co-Chair

CMP (Sunbelt Motivation & Travel, Inc.), past president of MPI and the D/FW Chapter—will be kicked off late this month.

“The Mentor Committee has developed an important incentive for all participants in this program,” said Fred Knieberg, CMP (AFK & Associates, Inc.), co-chair of the Mentor Program.

“The Convention Liaison Council (CLC) Board of Directors has accepted our suggestion to grant points—to be applied to Certified Meeting Professional (CMP) application or recertification, for all participants who complete the Mentor Program contract,” he said.

This effort has been turned over to the CMP Committee for incorporation in the new standards to be submitted to the Board at their April meeting.

The Mentor Program is designed to enhance the development of effective mentor/mentoree relationships, involving a defined process of review, evaluation, and reward for each six-month mentor contract. The program is explained in a guide outlining objectives, process, and expectations.

An introduction and training session is tentatively scheduled for Wednesday, January 31.

“Mentoring is a one-on-one relationship between two individuals, and the benefits and rewards are substantial for both,” said Knieberg. “New members learn from seasoned veterans and more experienced members become exposed to fresh, new ideas.”

“While a mentor cannot teach one to be a planner or supplier, a mentor can help one become a better one much faster,” he said. “The sharing of ideas and experience enhance expertise and limit the hard knocks along the way.”

President-elect Mary Lynn Novelli (Sterling Hotels & Resorts) is chairperson of the Mentor Committee. Sharing co-chair duties with Knieberg is Maurine Allen, CMP (Sunbelt Motivation & Travel, Inc.).

Committee members are Greg Pynes (Town of Addison) and Sally Goldesberry, CMP, (Meetings & Exhibit Specialists).

Pick up a copy of the Mentor Guide and an application at the January chapter meeting. Questions? Contact Knieberg any evening, at 214-361-4316.

### MENTOR PROGRAM MISSION STATEMENT

To encourage experienced professionals, to nurture and assist in the development of newer members of the meeting industry and to provide a structured environment for this effort.

### Professional Growth Awards

provide educational scholarship assistance for  
D/FW Chapter members.

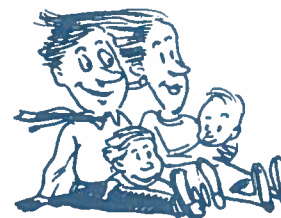


Help support the PGA—and maybe win a fun prize!—by purchasing tickets at each monthly meeting. Tickets are \$1 each, or 6 for \$5.

For more information contact  
PGA Chair Sheryl Kuhn (Harvey Home Office),  
214-788-0001 · FAX 214-687-0357

# February Family Fun fest

February Chapter Meeting  
**Bronco Entertainment Center**  
*How to Develop Guest  
and Family Programs*  
February 22 • 6:30 p.m.



Bring your spouse, significant other, children to this educational and fun-filled program!

*Enjoy bowling, arcade games, dancing, billiards and more!*



# EDUCATION NEWS

## January 'Brown Bag' Features Job Bank

Are you seeking a new position or an applicant for a open position in your company? Discover the benefits of the MPI Job Bank at the January 17 'Brown Bag' lunch.

Chairperson Traci Bower (Reunion Ranch) will explain what happens to a resume when it's submitted to the D/FW Chapter Job Bank. A panel of meeting professionals—hoteliers, CVBs, association and corporate planners, event planners—will discuss



what jobs skills their positions require.

The luncheon, venue TBA, is set for 11:30 a.m.-1:00 p.m. The program is free of charge. Bring your own lunch; drinks will be provided.

**CONTACT:** *Melissa Parks (American Fire Sprinkler Association) 214-349-5965*

## February 'How to' Breakfast Features Opportunities with MPINet and the Internet

"Demystifying the Net: Opportunities with MPINET/Internet" is the theme of the February 13, "How to" Breakfast at The Trade Group, 10255 Miller Road in Dallas.

The meeting will be a mini-workshop session beginning with registration at 7:00 a.m. and closing at 11:00 a.m.

The focus of the program will be to demonstrate and clarify the value of using online services and especially MPINet and the Internet for business opportunities.

Live demonstrations relating to how a planner or supplier would benefit from online research will guide attendees through the maze of the technology.

Marie Bloechle, MPINet SysOp and Wayne Batchelder, webmaster of [www.tradegroup.com](http://www.tradegroup.com), will be the presenters. Breakfast cost is \$15.00.

**CONTACT:** *Wayne Batchelder (MPI How-To Breakfast Committee), E-mail MPINET: 103163,124 or wbatch@tradegroup.com*

## February Executive Workshop Features College Education

More and more meetings professionals realize the importance of a college degree in order to remain professionally competitive in an industry that continues to grow and develop.

At the February Executive Workshop, Dr. Richard Carlson,

director of the Dallas Education Center, will discuss how Customized Academic Program (CAP) can meet the professional development needs for the hospitality industry through curricula tailored for specific professional goals.

"Pursuing a College Degree: A Walk through the Process," is February 15, 4:00-5:30 p.m.

Venue TBA.

**CONTACT:** *Colleen Rickenbacher, CMP (Dallas CVB), 214-746-6628*

## February Brown Bag Luncheon Features CMP Exam

At the February 28 Brown Bag Luncheon learn all about the Certified Meeting Planner (CMP) exam—how to apply, study and sit for the CMP Exam and how being a CMP can enhance your career.

The 11:30 a.m.-1:00 p.m. event will take place at the Harvey Hotel Downtown.

The program is free of charge. Bring your own lunch; drinks will be provided.

**CONTACT:** *Jim Follett, CHSE (Intercontinental Hotels & Resorts), 214-964-3139.*

## 'Walk a While in My Shoes' Returns

Spring dates for "Walk a While in My Shoes," the chapter's popular educational working partnership program are March 5-23. The class will meet from 5:30-7:30 p.m. at various venues throughout the metroplex.

"Walk a While in My Shoes" is a limited enrollment course—a joint project with Richland College. Attendees are required to attend seven of the nine evening sessions.

Cost for the session will be announced TBA.

**CONTACT:** *Susie Carr, CMP (Annuity Board of the SBC), 214-720-0511*

Dallas Hosts PEC— North America

# D/FW Chapter Wins Second Consecutive Award of Excellence



LEFT: Chapter members react to the announcement that the D/FW Chapter won the Award for Excellence in Special Projects. The chapter was cited for "an impressive and well organized special project involving an army of MPI volunteers which resulted in more than 500 people attending The Kids Charity Ball with proceeds in excess of \$55,000." The award is the chapter's second consecutive honor in the category of special projects.



The D/FW Chapter welcomed 1,622 attendees to the MPI Professional Education Conference—North America in Dallas December 10-12.



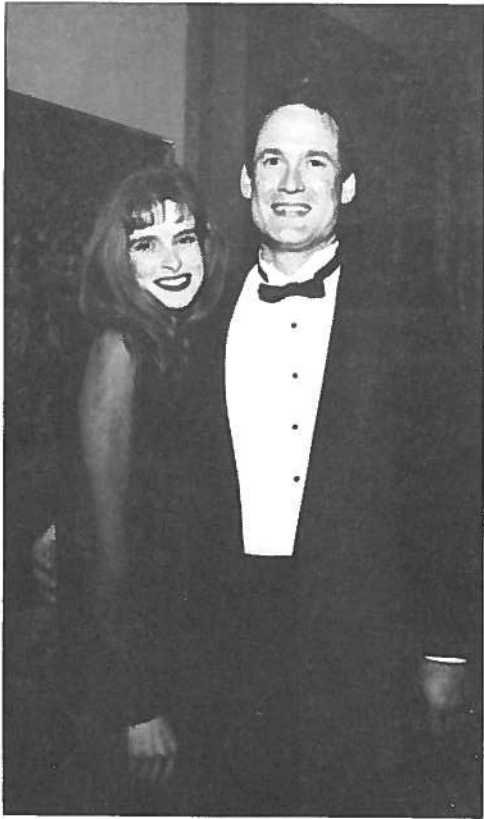




D/FW Chapter Members at PEC—North America • December 1995 • Wyndham Anatole Hotel

*December Meeting Highlights*

# MPI Enjoys Holiday Cheer at Omni Mandalay





*Photos by  
Mark Lazarow  
Photography*



# TEXAS COOKIN'



Texas  
Cookin'  
benefits  
the  
MPI  
Foundation

A cookbook featuring favorite Texas or regional specialties from among the D/FW Chapter membership—as well as from noted Dallas/Fort Worth area chefs and state and local celebrities—*Texas Cookin'* is available for \$15. Proceeds will benefit the MPI Foundation. Aprons are \$10 each. Purchase the set for only \$20! To order one of these fabulous gifts, call **Mary Lynn Novelli** (Sterling Hotels & Resorts), 214-402-4875 or FAX 214-402-4889.

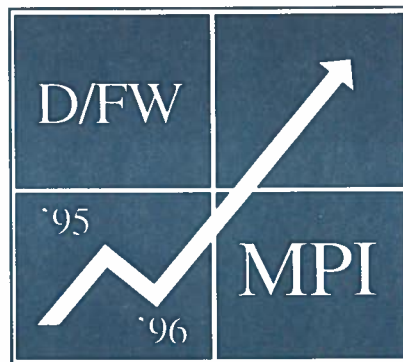
## President's Message—PEC '95 continued from page 1

We were credited with orchestrating an impressive and well organized special project involving an army of MPI volunteers which resulted in more than 500 people attending the Kids Charity Ball with proceeds in excess of \$55,000. It was an honor to accept the award along with Past President, Diane Smith, CMP, for all of you who worked so hard.

*Great job, everyone!*

Now, hold onto your hats as we plunge headfirst into 1996 with outstanding programs in many areas. Our January meeting topic foretells our new year: "Re-Engineering Everest—Taking Improvement to the Top." Come and get involved for great ROI (return on investment) and make it your own best year ever with your *Commitment to Excellence*.

*Commitment  
to  
Excellence*



*Exceeding Expectations!*



*Out of a job?*

*Looking for a  
new challenge?*

*Seeking a qualified  
applicant to fill a  
position?*

*Check out  
D/FW MPI's Job Bank!*

To list your resume  
with the Job Bank, send

- a note specifying your interest (hospitality/sales, hospitality/operations, meeting planning, temporary/contract work or internships)
- a minimum of five (5) resumes per interest category
- a check or money order for \$20 (for MPI D/FW chapter members) or \$30 (for non-members) made payable to MPI D/FW Chapter

*Send these items to:*

Traci Bower  
Chair, D/FW MPI Job Bank  
P.O. Box 741208  
Dallas, TX 75374-1208

Job Bank Phone Line:  
214-868-2908

*All inquiries are confidential.*

D/FW MPI's  
JOB  
BANK

**D/FW MPI  
Stars!**

# Salute to the Stars!



Star Brand Ranch  
Spectra Communications



GES Exposition  
Infomart



Addison Conference & Theatre Center  
Omni Mandalay Hotel  
Dallas Arboretum  
Majestic Theater  
Dallas Convention & Visitors Bureau  
Bill Reed Decorations  
J & S Audio Visual  
Yellow Rose Tours  
Bauer Audio Visual  
Cannonball Rental  
Ducky Bobs

**D/FW MPI  
Stars!**

*D/FW MPI STARS are members who contribute services or products to chapter meetings and special events.*

## CMP Preparation

Harvey Hotel Downtown

Feb. 28

11:30 a.m.-1:00 p.m.



The Brown Bag Educational Luncheon Series is free. Bring your own lunch (drinks provided) and treat a friend, client or fellow employee to an informative luncheon.

FOR EXCELLENCE IN VIP  
ENTERTAINING, WE'LL EXCEED  
YOUR EXPECTATIONS!



But don't take our word for it....

*"It's such a pleasure working with such a great facility. It makes my job worry free. I give you an A+++"*  
Linda Vest, State Farm Insurance

**SouthFork**  
RANCH

MPI Facility  
of the Year  
1994

EVENT & CONFERENCE CENTER Call today for information!  
(214) 442-7800

# MEMBERSHIP NEWS

## 'New Kids on the Block'

## D/FW Chapter Welcomes 25 New MPI Members!

**Joyce R. Bausch**  
Dallas Market Center  
2300 Stemmons Freeway  
Suite 5G51  
Dallas, TX 75258  
214/879-8176  
214/638-7221 (fax)  
*Planner*

**Stacey L. Clyburn Shorter**  
Austin Convention & Visitors Bureau  
201 East 2nd Street  
Austin, TX 78701  
512/404-4590  
512/404-4383 (fax)  
*Supplier*

**Chad D. Enloe**  
**Stouffer Renaissance Hotel**  
2222 Stemmons Freeway  
Dallas, TX 75207  
214/631-2222  
214/634-9319 (fax)  
*Supplier*

**Wendy E. Ezernack**  
Wyndham Anatole Hotel  
2201 Stemmons Freeway  
Dallas, TX 75207  
214/748-1200  
214/761-7242 (fax)  
*Supplier*

**Beverly D. Franckhauser**  
Anderson Consulting  
1950 Stemmons Freeway  
Suite 5065  
Dallas, TX 75207  
214/672-4200  
214/672-4201 (fax)  
*Planner*

**Tricia D. Jackson**  
The Expo Group  
1740 Hurd Drive  
Irving, TX 75038  
214/580-9000  
214/753-0008 (fax)  
*Supplier*

**John R. Lee**  
Yellow Rose Tour &  
Special Events Company  
1950 Stemmons Freeway  
Suite 2046  
Dallas, TX 75207  
214/746-3780  
214/746-3786 (fax)  
*Planner*

**Mark A. Martinez**  
Dallas Convention & Visitors Bureau  
1201 Elm Street; Suite 2000  
Dallas, TX 75270  
214/746-6689  
214/746-6688 (fax)  
*Supplier*

**Janet I. Oakley**  
DMC Transat  
300 Leo Pariseau  
Suite #400 CP2120  
Montreal, Quebec  
Canada W2W 2P6  
514/288-6464  
514/987-9941 (fax)  
*Supplier*

**Cari L. Peretzman**  
American Airlines  
C R Smith Museum  
MD 808  
DFW Airport, TX 75261-9617  
817/967-5910  
817/967-5737 (fax)  
*Supplier*

**Steve J. Robinson**  
Bit-by-Bit Computer Rentals  
4611 Langland Road, Suite 101  
Dallas, TX 75244  
214/960-9888  
214/960-9891 (fax)  
*Supplier*

**Donna B. Silverman**  
Sheraton Park Central  
12720 Merit Drive  
Dallas, TX 75251  
214/851-2016  
214/851-2033 (fax)  
*Supplier*

**Merriann Skinner**  
Texas Instruments  
7800 Banner Drive; MS3928  
Dallas, TX 75251  
214/917-1945  
214/917-7080 (fax)  
*Planner*

**Nicholas A. Sotis**  
Marriott Mexico Resorts  
9841 Airport Blvd; Suite 1100  
Los Angeles, CA 90045  
310/348-3207  
310/645-7986 (fax)  
*Supplier*

**Cynthia R. Stanley-Plotkin**  
Marketing Equities International  
2305 Cedar Springs; Suite 150  
Dallas, TX 75201  
214/720-1934  
214/855-1403 (fax)  
*Planner*

**Janice L. Stewart**  
Convex Computer Corporation  
3000 Waterview Parkway  
Richardson, TX 75080  
214/497-4508  
214/497-4550 (fax)  
*Planner*

**Peggy Stone**  
Printing Industries  
Association of Texas  
910 West Mockingbird  
Suite 200  
Dallas, TX 75247-5174  
214/630-8871  
214/688-1767 (fax)  
*Planner*

**Anne-Marie E. Taylor**  
The Dallas Arboretum  
8617 Garland Road  
Dallas, TX 75218  
214/327-8263  
214/324-9801 (fax)  
*Supplier*

**Lesley A. Turner**  
EFI Communications  
6311 North O'Connor Road  
Suite 211  
Irving, TX 75039  
214/869-9751  
214/869-9753 (fax)  
*Planner*

**Tiffany B. Vinyard**  
Yellow Rose Tour & Special Events  
Company  
1950 Stemmons Freeway  
Suite 2046  
Dallas, TX 75207  
214/746-3780  
214/746-3786 (fax)  
*Planner*

**Robin L. Wallace**  
Helms/Briscoe  
3418 Midcourt; Suite 110  
Dallas, TX 75006-5006  
214/960-5826  
214/960-5828 (fax)  
*Planner*

**Margaret A. Williams**  
IRMI  
12222 Merit Drive; Suite 1600  
Dallas, TX 75251-2217  
214/960-7693  
214/960-6037 (fax)  
*Planner*

**Louise Winegar**  
Sunbelt Motivation & Travel  
909 East Las Colinas Blvd; Suite 200  
Irving, TX 75039  
214/401-0210  
214/556-0916 (fax)  
*Planner*

**Raquel D. Wolfe**  
Yellow Rose Tour & Special Events  
Company  
1950 Stemmons Freeway; Suite 2046  
Dallas, TX 75207  
214/746-3780  
214/746-3786 (fax)  
*Planner*

**Nikki Woods**  
National Pawnbrokers Association  
2050 Stemmons Freeway; Suite 195  
Dallas, TX 75258  
214/745-4746  
214/745-1459 (fax)  
*Planner*

## MPI

MEETING PROFESSIONALS INTERNATIONAL

## D/FW Chapter

## Chapter of the Year 1994

## Chapter Newsletter Award 1995

Chapter of the Year 1988  
Chapter of the Year 1989



## MEMBERSHIP NEWS

### Membership Renewals



Thank you for recently renewing your membership in Meeting Professionals International!

Beverly G. Autrey  
United Group Association

Leo I. Bary  
Balloons To You

Thomas S. Bayer

Ellen J. Beckert  
The Freeman Companies

Robert L. Berry  
EFI Communications

Jyll L. Bishop  
Riverside Farms

Inga Boyer  
ROI Meetings & Events

Shawn T. Buttelmann  
JCPenny Company

Michelle M. Carter  
Southfork Ranch & Conference Center

Dean E. Conwell  
Irving Convention & Visitors Bureau

Phyllis R. Cox  
Arlington Convention & Visitors Bureau

Brenda L. Crouch  
Dick's Last Resort Management Company

Marie A. Dahmer  
VHA, Inc.

Norbert R. Dettmann, CMP, PhD  
Professional College Management Internat'l

Karen A. Fogle  
Star Brand Ranch Executive Retreat

Lisa M. Furlow  
Doubletree Hotel Lincoln Centre

Mary K. Guzman  
Omni Mandalay Hotel

Forrest Harkrader  
J & S Audio Visual, Inc.

Phyllis J. Jannusch  
GTE Directors Corporation

Steve W. Kemble  
Steve Kemble Event Design

Anna K. Kirksey  
Harvey Hotel

Sarrie L. Krepps Souleret  
Texas Lil's Diamond A Ranch

Jackie S. Ladapo  
The Meeting Planners Jidera

Gail D. Lemaire  
The Adolphus Hotel

Sandra M. Lindstrom, CMP  
Voluntary Hospitals of America

Katheryn A. Louth  
Burlington Northern Railroad

Bill E. Matyastik  
Business Interiors

Debra C. May  
Irving Convention & Visitors Bureau

Kami K. Price  
Infomart

Ann Renneker  
Dallas Market Center

Christine N. Roberson  
The Phoenician Resort

Eugene E. Rondeau, Sr.  
Creative Partner Marketing, Inc.

Jerry J. Samuels  
Jerry Samuels Pianist Bandleader

Holly E. Saucedo  
AMS User's Group, Inc.

Cindy M. Shelley  
The Dallas Arboretum

Darren L. Temple  
AVW Audio Visual

Jennifer A. Wetter  
Plano Convention & Visitors Bureau

Peg A. Wolschon  
Kerrville Bus Company

## INSTITUTES I, II & GRADUATE 1996

Three certificate programs  
for meeting management  
offering five-day, in-depth  
educational experiences

## SPRING INSTITUTES

APRIL 14-19, 1996

Peachtree Executive  
Conference Center  
Atlanta, Georgia

**REGISTER TODAY!  
SPACE IS LIMITED**

- Four Continuing Education Units (CEUs) are awarded for Institutes attendance
- For more information, call 214-712-7751

## MPI

MEETING PROFESSIONALS INTERNATIONAL  
committed to Educational Leadership

1950 Stemmons Freeway • Suite 5018  
Dallas, TX 75207-3109 USA



## Heard it through the Grapevine!

By M.T. Gnad  
'Grapevine' Columnist

**Theresa Schwartz**, manager meetings/conventions, *Budget Rent A Car*, and her husband Robert (Tad) had their second child, Hanna Elizabeth, born on November 30.

**Steve Foster** has accepted the position of vice president of sales and marketing for *Gray Line-Davel of Dallas Fort/Worth*. He was formerly with Yellow Rose Touring/Special Events.

**Ted Olsen, CMP**, president, *Promotional Products Association*, announces his retirement. His 17 years as president of PPA will officially end on February 9, 1996.

**Stephen Slagle** has accepted the position of president, *Promotional Products Association*. He was formerly with National Association of Campus Activities.

**Donna Schott**, owner, *Travel King of Dallas*, had an article published in the November issue of *Dallas/Fort Worth Lifestyle* magazine. The subject: skiing in the Canadian Rockies. Schott will be a regular contributor to the new publication.

A recent article about meeting planning in "Inside Tarrant Business," a special section of the *Fort Worth Star-Telegram* featured **Judy Wynne** and **Nena Miller** (Corporate Meetings and Incentives, Fort Worth).

**Sherri Cook, CMP** (Sherri Cook & Associates) wrote an article published in a recent issue of *The Meeting Manager*. The case study outlined her work as meeting coordinator for the United We Stand America National Conference in Dallas.

The D/FW Chapter's September meeting—about technology and the meetings industry—was featured in the December issue of *The Meeting Manager* (Chapter News/Inside MPI). Pictured were **Darla Ogle** and **Darren Ward** (HyperGraphics).

Keep up with personal news about fellow MPI chapter members—job changes, promotions, awards or special recognitions, weddings, or births—through "Heard it through the Grapevine." Please contact Mary-Theresa Gnad (214-539-6538 • FAX 214-724-0932 • CompuServe 74161,732) about items of interest for this column.

## Opinion, Please!

**Q: What was the most creative or unusual event you have participated in or attended?**



**Lisa Ahee Conwell**  
**McKinsey & Company • planner**

A: "Our company holiday party at Dallas World Aquarium. The invitation was in a bottle with sand and shells. A diver swimming in a shark tank greeted guests who enjoyed tropical rum punch in bamboo cups. Food stations featured regional foods of the islands. Tables were draped in floral fabric and holiday lights twinkled in palm trees. A limbo contest was among the activities, and a weekend for two in Cancun was the door prize."



**Alaina Webb**  
**Festivities • supplier**

A: "The Bomb Factory, with the theme, "Bombed Out." Commissioned to create an unusual and completely awesome atmosphere for the annual awards ceremony and dinner for a group of artists and architects. With professional lighting, sound, fog machines, a custom art wall more than 100 feet long, corrugated tin, scud missiles, bombs, signs, sound explosions, etc., an old warehouse was transformed!"



**Susan McMahon**  
**The Clarion Hotel Richardson • supplier**

A: "Our Hollywood-themed customer appreciation party! Guests arrived to 'red carpet' treatment. 'Entertainment Tonight' greeted such celebs as 'Liz Taylor,' 'Michael Jackson' and "Sharon Stone.' As guests dined on delicious, aromatic foods, they were entertained by stars of film classics—via a giant screen. Later, guests enjoyed a guest appearance by The King—'Elvis Presley.'!



**Sy Retsky**  
**National Contract Management Assn. • planner**

A: "My 'most creative and unusual event' will take place in March when NCMA holds its first World Conference in Arlington, Texas. We are expecting 3000-5000 attendees, and guest speakers will be Vice President Al Gore and Senator Kay Bailey Hutchinson!"

"Opinion, Please" is a question and answer feature column prepared by Kristi Hollomon (J&S Audio Visual, Inc.), advertising director for the CURRENT.

## Supplier of the Year

# Colleen Albert Rickenbacher is Chapter Standout

By David Erkel

*International Mtg. Mgt. Services*

**"WARNING! HIGH VOLTAGE!"**

This notice should be posted anywhere Colleen Albert Rickenbacher may be found.

She has enough enthusiasm, ambition, and energy to power most third world countries. Receiving the D/FW 1995 Chapter Supplier of the Year Award is testament to this fact.

Rickenbacher has taken the ability to organize information, people, and the intricacies involved in the hospitality industry and turned it into a specialized art form.

The progression of her career supports this: nine years as a choreographer for the Penn State Majorettes, five years as an international meeting and incentive planner for a floor-covering company in Florida, and, now, 10 years at the Dallas Convention and Visitors Bureau (DCVB).

As vice president of membership for



**Colleen Albert Rickenbacher**  
1995 Supplier of the Year

DCVB, she plays a key role in the commercial health of the metroplex. "We sell the city as a whole package. Hotels, restaurants, destination management companies and many other businesses benefit from our efforts," Rickenbacher said.

Corporate sponsorship is presently a strong focus for Rickenbacher and the membership department at the DCVB. "As more corporate sponsors become members, advertising, marketing and selling efforts are enhanced, bringing more business and more revenue to Dallas," says Rickenbacher.

"The DCVB is contacted by individuals, firms, corporations, etc., interested in holding a social or business function in Dallas," said Rickenbacher. "It may be a family reunion for 20 people or an international convention for 10,000 people."

These functions will have their own unique needs such as photography services, catering services, transportation services, lodging accommodations, and so forth, to make them a success. The DCVB assists in identifying these needs and provides the appropriate local leads and contacts from their membership bank.

The local contacts are provided information on the potential clients' functions so that they may tailor their goods and services for prospecting purposes. The end result is an efficient and effective exchange, Rickenbacher said.

A member of MPI since 1984, Rickenbacher has taken an active role on many fronts. She has been involved with the programming, membership, public relations, and community services committees, to name a few.

She has been chairperson for community services ('89-90), on the board of directors and vice president of membership ('91-92), and chairperson of Walk a Mile in My Shoes ('95).

"MPI really got me started; it is a good mentoring organization that helps you succeed," Rickenbacher said.

Perhaps Rickenbacher's greatest satisfaction comes from teaching and education. Her book, *Step by Step Procedure*

*in Becoming a Certified Meeting Professional*, has been officially accepted by the Convention Liaison Council.

She has taught advanced meeting planning courses at Richland College since 1990 as well as a session at Cornell University in 1994. She instructed the MPI Italian chapter members in preparation for the CMP exam.

Speaking engagements—more than a hundred in the last five years—keep her busy. "Education is such a valuable tool. This is one way I can give back for so much that I have received; I love to teach!" Rickenbacher said.

Outside of the DCVB and MPI Rickenbacher is kept busy with industry related organizations such as the Texas Chapter of Association for Convention Operations Management and the Association for Convention Management.

Rickenbacher is an advocate for community service. "Sharing knowledge and working within the community provides a great outlet for personal frustrations and help a person to grow."

Her active role in the community includes service as special events chairperson and board member for Child Protection Services ('94, '95), volunteering for the "Stew Pot" and Family Shelters and in the labor and delivery department at Parkland Hospital.

Rickenbacher was a major force in last month's 1995 PEC—North America meeting in Dallas. She served as liaison between the host committee, chairpersons, and the MPI Headquarters. Organizing details and events for this educational meeting include entertainment, sponsorships, public relations, transportation and involvement of the D/FW Chapter members.

Rickenbacher's next big adventure starts next month when she addresses a group of 200-300 government officials, business leaders and non-governmental organizations in Zimbabwe, Africa. Her topic: The economic importance of holding international meetings and conventions locally.



# COMMUNITY SERVICE



## The Kids Charity Ball

ENJOY THE TRIP OF A LIFETIME!

SIX NIGHTS IN ITALY ...

Three nights at the Hotel Excelsior in Rome  
Three nights at the Hotel Excelsior in Florence  
Round trip coach air for two from Dallas to Rome ...

Compliments of  
ITT SHERATON HOTEL'S LUXURY COLLECTION  
and  
DELTA AIR LINES

*Remember Father Vito's words ...*



*There's no place like Rome!*

You can buy your chance for The Kids Charity Ball Drawing trip to Italy for just \$5.00 at the next Chapter meeting!

THE KIDS CHARITY BALL CORPORATE SPONSORS  
(as of 12/18/95)

**PLATINUM SPONSOR - \$5,000**  
Addison Conference & Theatre Centre

**BRONZE SPONSOR - \$1,000**  
Irving Convention & Visitors Bureau

.....

Be a Kids Charity Ball sponsor, and receive these benefits:

- \* Complimentary table(s) of ten at the ball
- \* Advertising space in The Kids Charity Ball program
- \* Special recognition in promotional material (Gold & up)
- \* Invitation to the VIP Reception & Auction Preview
  - \* Recognition in the *Current*
  - \* Recognition in TKCB "Yellow Pages" Ads
  - \* Advertising in the *Current* (Silver & up)
- \* The satisfaction of knowing that you've made a difference in the lives of children!

To become a Corporate Sponsor, simply call:

Stephanie Davis (ITT Sheraton) at 214-980-4934  
Steven Foster (Grayline) at 214-630-1000



**Diane Smith, CMP** (Alcon Laboratories) enjoying the fun at the Love For Kids Christmas Party!

## LOVE FOR KIDS HOLIDAY CHEER

Over 3,500 underprivileged children enjoyed fun and games at the Love For Kids Christmas Party at Circle R Ranch on December 2!

Under the leadership of Immediate Past President, **Diane Smith, CMP** (Alcon Laboratories), D/FW Chapter members **Lisa South, CMP** (Ducky Bob's), **Patti Palacios** (Helms Briscoe), **Robin Wallace** (Helms Briscoe) and **Patti Wilke, CMP** helped the children get creative in the arts and crafts area making hats, vests and other fun things!

Love For Kids, founded in 1975 by Bill Barrett and DFW Chapter member **Alan Powdermaker** (Circle R Ranch), touches the lives of thousands of underprivileged children each year.

Love For Kids is one of four children's organizations that will benefit from The Kids Charity Ball 1996.

*The Kids Charity Ball is a gala evening sponsored by the D/FW Chapter of MPI and benefits underprivileged and terminally ill children. For additional information, contact Patti Wilke, CMP at 214-361-7789.*



# WE'LL TAKE CARE OF THE MEETING SO YOU CAN TAKE CARE OF BUSINESS.

.....

The Hiltons of Texas can provide you with the services and facilities to make your meeting go exactly as planned. From comfortable meeting rooms and support services to an experienced and attentive staff, we have the consistency you're looking for. For reservations, call any Hilton in Texas, or call Hilton Direct at 1-800-321-3232.



Arlington Hilton • Beaumont Hilton • College Station Hilton and Conference Center • DFW Hilton Executive Conference Center  
Dallas Parkway Hilton • El Paso Airport Hilton • Houston Hobby Airport Hilton • Houston Plaza Hilton  
Houston Southwest Hilton • Nassau Bay Hilton and Marina • San Antonio Airport Hilton and Conference Center  
Westchase Hilton and Towers • Waco Hilton Inn

HILTON. SO NICE TO COME HOME TO.

.....

# MPI

MEETING PROFESSIONALS INTERNATIONAL®

Dallas/Fort Worth Chapter  
4020 McEwen • Suite 105  
Dallas Texas 75244



## DALLAS/FORT WORTH CHAPTER

### MPI

MEETING PROFESSIONALS INTERNATIONAL®

Meeting Professionals International is the world's largest association of meetings professionals with more than 13,200 members in 44 countries and 54 chapters and one club. MPI's mission is to provide educational opportunities and recognition for those in the meetings industry. The association is committed to excellence in meetings, continuous international growth, research, a strong chapter network and high ethical standards.

**MPI International Headquarters**  
INFOMART  
1950 Stemmons  
Suite 5018  
Dallas, Texas 75207-3109  
214-712-7700

**MPI**  
**Dallas/Fort Worth Chapter**  
4020 McEwen • Suite 105  
Dallas Texas 75244  
214-774-1404  
FAX 214-490-4219  
E-Mail: 74742,1725 (Compuserve)  
or  
INTERNET:74742.1725@compuserve.com

#### Officers

##### President

Phyllis Firebaugh, CMP  
Krisam Hotels & Resorts  
214-458-8692

##### President-Elect

Mary Lynn Novelli  
Sterling Hotels & Resorts  
214-402-4875

##### Immediate Past President

Diane Smith, CMP  
Alcon Laboratories, Inc.  
817-551-8077

##### Vice President/Administration

Linda Sergeant  
Bill Reed Decorations, Inc.  
214-823-3154

##### Vice President/Education

Greg Pynes  
Town of Addison  
214-450-6202

##### Vice President/Finance

Charlotte Merrill-Davis  
Event Source Professionals  
817-267-6698

##### Vice President/Membership

Sally Goldesberry, CMP  
Meetings & Exhibit Specialists  
214-407-0755

##### Vice President/Programs

Michelle Carter  
Southfork Event & Conference Center  
214-442-7800 x281

##### Vice President/Public Relations

Dana Nickerson, CMP  
Square One Productions  
214-343-8067

#### Board of Directors

##### Planners

Susie Carr, CMP  
Annuity Board of the SBC  
214-720-0511

Sherri Cook, CMP  
Sherri Cook & Associates  
214-732-9396

Tracey Smith  
Computer Language Research, Inc.  
214-250-7404

Deborah Wheeler  
Society of Petroleum Engineers  
214-952-9311

##### Suppliers

Traci Bower  
Reunion Ranch  
214-271-2666

Gail Lemaire  
The Adolphus Hotel  
214-742-8200

Jan Pollard  
Omni Hotels National Sales Office  
214-444-0044

Kathi Thompson  
The Inn on the River  
214-424-7119

#### CURRENT Staff

##### Editor

Gracie Hatfield Hilton  
The Write Stuff  
Ph. & FAX 817-467-7439

##### Advertising Director

Kristi Hollomon  
J&S Audio Visual, Inc.  
214-241-5444