

Four-Time Winner—Chapter of the Year Award

MPI

MEETING PROFESSIONALS INTERNATIONAL
Committed to Educational Leadership

CURRENT

Meeting Professionals International

July 1999

Dallas/Fort Worth Chapter

'Together Everyone Achieves More'

MPI D/FW Honors Leaders, Applauds Leadership and Celebrates 'TEAMwork' at Annual Awards Gala

MPI D/FW Chapter applauded leadership, service and accomplishments at the annual Awards Gala last month.

Patti Wilke, CMP (Independent Planner) was named D/FW Chapter Planner of the Year.

Michelle Carter, CMP, CHSP (Wyndham Anatole Hotel) was honored as D/FW Chapter Supplier of the Year.

Patty Stern (Carey Worldwide Transportation) was named Rising Star.

Steven G. Foster, CMP (Circle R Ranch) was installed as 1999-2000 president of the MPI D/FW Chapter.

See centerspread for photos from the June Awards Gala.



Patti Wilke, CMP
Independent Planner
D/FW Chapter Planner of the Year



Michelle Carter, CMP, CHSP
Wyndham Anatole Hotel
D/FW Chapter Supplier of the Year



1998-99 MPI D/FW Chapter President **Colleen A. Rickenbacher, CMP** and 1999-2000 President **Steven G. Foster, CMP** (Circle R Ranch).



June Awards Gala Chair **Debbie Meyers** (BRAVO! Entertainment) and **James C. Monroe, CMP** (Gale Sliger Productions) served as emcees for honors ceremonies.



Patty Stern (Carey Worldwide Transportation) was named MPI D/FW 'Rising Star' at the June Awards Gala.

In this issue

President's Message	3
1999-00 Board of Directors	3
1999-00 International Liaisons	4
July Meeting Details	5
Education News	6
ChaMPions Breakfast	8
June Awards Gala	10
"Grapevine" News	15

D/FW Chapter Meeting • Wyndham Anatole Hotel • July 22 • 11:30 a.m.

MPI

MEETING PROFESSIONALS INTERNATIONAL®

Committed to Educational Leadership

Dallas/Fort Worth Chapter

CURRENT

Dallas/Fort Worth Chapter Office
Dallas/Fort Worth Chapter
PMB 259
7750 North MacArthur Blvd.
Suite 120
Irving, TX 75063-7501

Chapter Administrator
Randie Charnes
(972) 869-3836
Fax: (972) 506-7485
rcharnes@msn.com

CURRENT Editor
Gracie Hatfield Hilton
The Write Stuff
metro (817) 467-5449
gracie@eaze.net

Vice President Public Relations/Marketing
Stephanie Schroeder
Starwood Hotels & Resorts
(972) 238-1008
stephanieschroeder@starwoodhotels.com

Managing Editor
Marsha Singer
The Dallas Directory
(214) 823-4370
daldir@onramp.NET

Advertising Chair
Gregory Pynes
Hand & Associates Marketing Communications
(214) 770-1609
gregorypynes@connect.net

Editorial Assistant
Alainna S. Ryan, CMP
Excel Communications, Inc.
(214) 863-8926
aryan@excel.com

Photographer
Jim Woods
VISTA Photographic & Video Group
(972) 380-0985
woodsphoto@hotmail.com

MISSION STATEMENT

Meeting Professionals International is the pivotal force in positioning meetings as a primary communication vehicle and a critical component of an organization's success. Meeting Professionals International leads the meetings industry by serving the diverse needs of all people with a direct interest in the outcome of meetings, educating and preparing members for both their changing roles and validating relevant knowledge and skills, as well as demonstrating a commitment to excellence in meetings.

The *CURRENT* is published 12 times yearly for the D/FW Chapter of Meeting Professionals International, the industry's leading educational and networking resource in meetings management. Statements of fact and opinion are the responsibility of individual writers and do not imply collective opinion of the officers or members of MPI. The *CURRENT* and MPI D/FW Board of Directors are not responsible for the content of advertisements. Any complaints concerning an ad should be directed to the advertiser.

Upcoming Chapter Meetings

July 22, Thursday
Wyndham Anatole Hotel
"Impact the Legacy—Faces of the Future"
11:30 a.m.

1999-2000 Meeting Dates
Plans are underway for MPI D/FW monthly chapter meetings for the 1999-2000 administrative year. Watch this space for developing details. Dates through the remainder of 1999 are:

August 26
September 23
October 28
November 18
December 16

Upcoming MPI D/FW Chapter Committee Meetings and Events (Educational Opportunities listed on page 6)

BOARD OF DIRECTORS
July 16-18
Friday-Saturday
Summer Retreat
Greystone Castle
Contact: Steven G. Foster, CMP
(817) 430-1561 • stevenfoster1@compuserve.com

FINANCE
August 25
Wednesday @ 5:00 pm
Finance Committee
Westin Galleria Hotel
Contact: Cheryl Beasley, CMP
(817) 931-7923 • cheryl.beasley@sabre.com

PROGRAMS
July 15
Thursday @ 5:30 pm
Program Committee
Wyndham Anatole Hotel
Contact: O.D. O'Donnell
(972) 789-9340 • od@nightlifetalent.com

MEMBERSHIP
July 20
Tuesday @ 5:30 pm
Membership Committee
Renaissance Meetings
2544 Elm Street, Suite 100
Contact: LeeAnn Harle
(214) 742-3700 • harle@onramp.net

MPI

MEETING PROFESSIONALS INTERNATIONAL®

Committed to Educational Leadership

MPI International Headquarters
4455 LBJ Freeway • Suite 1200
Dallas, Texas 75244-5903
972-702-3000
FAX: 972-702-3070
http://www.mpiweb.org

ISSUE	DEADLINE
August inserts due August 9	July 16, Friday
September inserts due Sept. 6	August 20, Friday
October inserts due Oct. 11	Sept. 17, Friday

E-mail copy (Microsoft Word 7/Windows attachment) to
gracie@eaze.net

CURRENT Deadlines



President's Message

Impact the Legacy!

Welcome to the 1999-2000 Meeting Professionals International Dallas/Fort Worth Chapter. This is a time of unparalleled influence and opportunity.

Only once before in this chapter's 22-year history, at its beginning in 1977, have our members been so empowered to choose a professional destiny. Consider the chapter founders who established its charter, grew the membership, developed original programs and authored the governing policies and procedures. They were the architects of all subsequent successes.

We too can now determine our own path to the future. We can be the creators of innovation and perhaps inspire a new vision for the meetings industry in our city. We can impact the next significant history of MPI D/FW.



Steven G. Foster, CMP
Circle R Ranch
D/FW Chapter President

Respect for this honored past is expressed in my chapter theme for 1999-2000: **Impact the Legacy**. I challenge you to consider the tremendous legacy of accomplishment that has been entrusted to this new millennium generation of MPI D/FW members. We are entrusted with its care and custody in the months leading us further into the 21st century.

Your participation is so very important. Get involved on whatever level you can. I promise the results will be dramatic. The Legacy we will seek to Impact belongs to YOU.

The 1999-2000 Board of Directors already has some exciting member news to announce as we begin our leadership term.

Chapter Administrator

MPI D/FW has officially hired a chapter administrator. Randie Charnes, who recently retired from NCR, has been assisting the

chapter on a part-time basis for the past six months with a variety of administrative duties. Many of you already have noted the significant improvements in meeting registration services Randie revamped for us. Her newly-expanded full-time responsibilities will encompass many areas, including general chapter administration, database management, monthly meeting support, committee assistance and finance.

MPI D/FW Web Site

In August, we will unveil our newest communication resource, the MPI D/FW Web Site. This exciting on-line access to MPI D/FW will include information on programs, education, membership, employment, committee involvement, sponsorship opportunities and upcoming chapter events. Look for details on when to log on at www.mpidfw.org

The Legacy Committee

A new committee chaired by Delinda Dudley (Fun Factory Decorations & Special Events) will assist me to better serve you. The Legacy Committee is comprised of members Gregory Pynes (Hand & Associates), Jennifer Felke (The Trade Group), Mary Lynn Novelli, CMP (Sterling/Summit/Golden Tulip Hotels & Resorts), Esther Wigley, CAS (Appointments Professional Advertising), Eric Johnson, CMP, CMM (Meeting Professionals International), Marcy Roitman (Grapevine CVB) and Phyllis Firebaugh, CMP (SEI Incentives).

These active and dedicated individuals will ensure that your chapter president stays focused on issues important to the membership. They will counsel me in time of decision and also serve as official MPI D/FW ambassadors. Their guidance during my administration should prove to be a most valuable member benefit.

Thank you for your confidence and support. I look forward to serving as your president and welcome the opportunity to **Impact the Legacy**.



Chapter of the Year
1989 ★ 1990 ★ 1994 ★ 1996

MPI

MEETING PROFESSIONALS INTERNATIONAL
Committed to Educational Leadership

MPI

MEETING PROFESSIONALS INTERNATIONAL®
Committed to Educational Leadership

Meeting Professionals International is the world's largest association of meetings professionals with more than 17,000 members in 64 countries and 58 chapters and six clubs. MPI serves as the pivotal force in positioning meetings as a primary communication vehicle and a critical component of an organization's success. MPI leads the meeting industry by serving the diverse needs of members and nonmembers alike through its commitment to quality education, continuous improvement and excellence in meetings while upholding high ethical standards.

President

Steven G. Foster, CMP
Circle R Ranch (817) 430-1561
stevenfoster1@compuserve.com

President-Elect

Steve Kemble
Steve Kemble
Steve Kemble Event Design (214) 943-5949
steve.kemble@airmail.net

Immediate Past President

Colleen A. Rickenbacher, CMP
Dallas CVB (214) 571-1040
cricken@dallascvb.com

Vice President Administration

Lynn Lewis, CMP
Ernst & Young LLP (214) 665-5785
lynn.lewis@ey.com

Vice President of Education

Tony Cummins
Adam's Mark Hotel Dallas (214) 922-0316
ticc.dallas@att.net

Vice President of Finance

Cheryl L. Beasley, CMP
Sabre (817) 931-7923
cheryl.beasley@sabre.com

Vice President of Membership

Tim Wade, CMP
Lennox Industries Inc. (972) 497-5039
tim.wade@lennoxintl.com

Vice President of Programs

O.D. O'Donnell
Nightlife Talent and Mgt. Agency (972) 789-9340
od@nightlifetalent.com

Vice President of PR/Marketing

Stephanie Schroeder
Starwood Hotels & Resorts (972) 238-1008
stephanie.schroeder@starwoodhotels.com

BOARD OF DIRECTORS

Bitsy Burns, CMP
H.D. Vest Financial Services (972) 870-6011
burnsb@hdvest.com

Betty E. Garrett, CMP
Garrett Speakers Internat'l Inc. (972) 513-0054
Betty@GarrettSpeakers.com

LeeAnn H. Harle
Renaissance Mtgs. & Incentives (214) 742-3700
harle@onramp.net

Eric Newcomb
Promus Hotel Corp. (214) 953-2224
enewcomb@promus.com

Dana Nickerson, CMP
Square One Productions (214) 343-8067
dana@seabrookcomputers.com

Beverly O'Laughlin, CMP
CompuCom (972) 856-3686
bolaughl@compucom.com

Bruce Wolpert, CMP
Hilton Sales Worldwide (972) 701-3750
bruce_wolpert@hilton.com

Peg Wolschon, CTP
Coach USA (972) 263-0294 #103
wolschon@kerrville-bus.com



Chapter of the Year
1989 * 1990 * 1994 * 1996

MPI

MEETING PROFESSIONALS INTERNATIONAL
Committed to Educational Leadership

International Chapter Liaisons

The International Liaisons are appointed by the Chapter President to provide a vital communication between MPI D/FW members and MPI. Each liaison has a specific assignment and is responsible for providing information to chapter members on areas including Marketing, Government Affairs, Special Interest Groups, Public Relations and both the WEC and PEC Conferences.

Government Affairs Liaison

LeeAnn Harle
Renaissance Meetings & Incentives DMC
(214) 742-3700
Fax: (214) 742-3723
harle@onramp.net

Marketing Liaison

Erin Longley
Imagine Events
(972) 758-9355
Fax: (972) 964-1369
erin@imagineevents.com

PEC (Nashville) Liaison

Lynn Lewis, CMP
Ernst & Young LLP
(214) 665-5785
Fax: (214) 665-5005
lynn.lewis@ey.com

Special Interest Group Liaison

Elizabeth A. Baryshev
MCI Performance Group
(972) 417-3255
Fax: (972) 320-9603
ebaryshev@mcipg.com

WEC (Philadelphia) Liaison

Kerri Atterberry
Wyndham Anatole Hotel
(214) 761-7286
Fax: (214) 761-7242
katterberry@wyndham.com

PR/Marketing Liaison

Lianne Pereira
Susan G. Komen Foundation
(972) 855-1676
Fax: (972) 855-1660
lpereira@komen.org

Legacy Committee Chair

Delinda Dudley
Fun Factory Decorations & Special Events
(972) 271-7444
Fax: (972) 271-7888
deldudley@aol.com

Editor's Notes CURRENTly

Ruts. They're easy to make and easier to ride.

Gail Lemaire (Hotel InterContinental) recently pointed out that although "many of us" rely on cyberspace to communicate, e-mail addresses were missing in the *CURRENT*.



Gracie H. Hilton
The Write Stuff
CURRENT Editor

Bingo! Light bulb flash! Why hadn't we thought of that?!

We often keep doing the same old thing the same old way "just because that's the way we've always done it."

After a quick conference among those closely associated with the MPI D/FW newsletter, it was crystal clear that Lemaire's suggestion was a timely one.

In this first issue of the *CURRENT* for the 1999-2000 administrative year, you will see e-mail addresses in leadership lists and in most "contact lines."

Thanks for turning on the light, Gail Lemaire! (gail_lemaire@interconti.com)

As a cadre of new faces takes over the leadership of MPI D/FW for 1999-2000, some things will change.

One thing that will *not* change is the possibility for errors in the *CURRENT*—in spite of the best efforts of your editor and three proofreaders.

The most significant goof in the June issue was the omission of **Patty Stern's** (Carey Worldwide Transportation) name from the list of nominees for Rising Star. What an egregious omission!

Nomenclature matters. **Colleen A. Rickenbacher** (Dallas CVB) was featured as a *nominee* for the Marion N. Kershner International Chapter Leader of the Year Award. She was a *finalist* for that award. **Gregory Pynes** (Hand & Associates Communications) was also a nominee, so we erred in our reporting—an error that was repeated in two consecutive issues.

Another goof in the June issue: **Betty Garrett, CMP** (Garrett Speakers International) wrote the article about the June Awards Gala. Your editor erred by giving the byline to **Steven G. Foster** (Circle R Ranch)—who wrote the "meeting article" the month before.

Sincere apologies to all—and a pledge from the *CURRENT* staff for more exacting perusal before we go to press.

—gracie@eaze.net

D/FW Meetings & Hospitality Industry

JOB BANK

Voice Mail
972-381-5624

Find a Good Job!
Find a Good Employer!



Features

- List of job openings with contact information
- Updated weekly
- Instructions about listing a job
- Leave a message for Job Bank committees of participating organizations
- Free for applicants

To volunteer for the Job Bank Committee, call
Elly Paulsen (Freeman Decorating)
(214) 267-5723 • fax (214) 634-2221
paulse@freemanco.com

Impact the Legacy – Faces of the Future

By Sherri Cook, CMP
Sherri Cook & Associates

As 1999-2000 MPI D/FW President Steven Foster, CMP (Circle R Ranch) kicks off his term with the theme "Impact the Legacy," you are invited to be a "Face of the Future" (MPI's future) by attending this year's "Natural Resources" luncheon meeting at The Wyndham Anatole Hotel.

Featured speaker Mac Fulfer will demonstrate face reading techniques. A favorite speaker at MPI's convention, Fulfer will present "Amazing Face Reading: A Breakthrough in Communication."

A seasoned lawyer of 22 years, Fulfer became interested in face reading for the purpose of jury selection. He quickly discovered that face reading changed his perspective, allowing him to see people more compassionately through the experiences reflected on their faces.

Fulfer presents workshops nationwide and his seminars are in great demand.

The annual MPI D/FW "Natural Resources" focus encourages your involvement. New officers will greet you at the reception and provide information to those of you not yet signed up for committee involvement this year.

New or prior committee members will be incorporated into the "Face Wall." When selecting your seat for lunch, please sit at one of the tables designated for your committee or a committee table in which you would like more information.

July committee members are Sue Fry (Destination Dynamics), Linda Sergeant (Bill Reed Decorations), David Gisler (Freeman Decorating Company), Luana Stoutmeyer (Encore Production), Wendy Ezernack (Wyndham Anatole Hotel) and Sherri Cook, CMP (Sherri Cook & Associates).

Hosts from The Wyndham Anatole Hotel are Marc Messina, general manager; Wendy Ezernack, national director of sales; Kristy Sartorius, director of sales; Michelle Zurio, director of catering-administration; Tom Welther, executive chef; and Henri Mehler, executive pastry chef.

MPI

MEETING PROFESSIONALS INTERNATIONAL
Committed to Educational Leadership

July MPI D/FW Chapter Meeting

"Impact the Legacy – Faces of the Future"

*—Featuring Mac Fulfer's Face Reading Techniques and
MPI D/FW's Annual "Natural Resources" Focus—*

Meet new chapter VPs and sign up for committees!

Thursday, July 22

**Thursday, July 22, 1999
Wyndham Anatole Hotel**

2201 Stemmons Freeway (Wycliff & I-35) • 214-748-1200

*11:00 a.m. Chapter Orientation - Madrid- Mezzanine Level -Tower
11:30 a.m. Registration & Reception - Wedgwood Foyer - 1st Floor - Tower
12:00 p.m. Lunch & Program - Wedgwood Room - 1st Floor -Tower*

*—Complimentary Self-Parking • Valet Parking is \$7.00 —
Space is limited to 250. Register today!*

*R.S.V.P. to Randie
by noon, Tuesday, July 20
Reservations rec'd after the deadline
will be placed on waiting list.
•FAX 972-506-7485 (see fax insert)
•rcharnes@msn.com*

*Advanced Member Price \$27
Advanced Guest Price \$30
Onsite Price \$40*

July Host Facility

The Wyndham Anatole Hotel

Situated on 50 acres with 1,620 guestrooms including 129 suites, 12 restaurants and lounges, more than 300,000 square feet of meeting and function space, a state-of-the-art fitness facility and a landscaped seven-acre park, the Wyndham Anatole is the largest hotel in the Southwest.

Tens of millions of dollars have been spent on recent renovations. Now open is a new 127,450-square foot Trinity Conference Center which includes the 73,000-square foot Trinity Exhibit Hall, a new 45,000-square foot multi-purpose room, a 10,000-square foot pre-function area, a grand rotunda entrance, additional restrooms and storage areas and a 7,000 square foot banquet kitchen and loading dock area.

The Anatole has consistently been showered with awards by industry leaders for excellence in meeting services, facilities and food & beverage. Some of these achievements include the Gold Key Award, the Pinnacle Award, the Gold Platter, Planner's Choice, Award of Excellence, Inner Circle and the Paragon Award.

DIRECTIONS

From Tollway North: Exit west (right) on Wycliff; north (right) on Harry Hines to 1st light; left on Market Center Blvd.; go under I-35, hotel on right.

From Ft. Worth: Take 30 East to 35E North; exit right on Market Center Blvd.; left on Market Center Blvd.; go under I-35, hotel on right.

From Irving: Take 183 or 114 East to Dallas; take I-35E going south; exit right on Market Center Blvd.; left on Market Center Blvd.; go under I-35, hotel on right.

From 75 heading South: Take Woodall Rogers traveling west; take I-35E heading north, exit right on Market Center Blvd.; left on Market Center Blvd.; go under I-35, hotel on right.

1999 WORLD EDUCATION CONGRESS



PHILADELPHIA, PENNSYLVANIA
JULY 11-13, 1999

*the industry's most
comprehensive
adult education
experience*

More than 90 Forums
and Workshops

Cutting-Edge
General Sessions

Technology Laboratory

MeetingPlace '99

Unique Networking Events

MPI

MEETING PROFESSIONALS INTERNATIONAL
Committed to Educational Leadership

International Headquarters
4455 LBJ Freeway • Suite 1200
Dallas, Texas 75244-5903 USA
Tel: 1.972.702.3000
Fax: 1.972.702.3070

World Wide Web Site
<http://www.mpiweb.org>

For registration materials call
1.972.702.3051 or visit MPIWeb

EDUCATION NEWS



Educational Opportunities & Upcoming Industry Meetings at a glance

July 11-13
MPI World Education Conference
"The Power of Meetings"
Philadelphia, PA

August 17, Tuesday
Platinum Series
www.meetingexperience.com

Mary Kay Headquarters
Rotunda, Level 1
16251 Dallas Parkway
Addison Texas 75001
4:00 p.m. - 7:00 p.m.
For more info:
Fred Knieberg, CMP
214-361-4316 • FHKnieberg@worldnet.att.net
or Tony Cummins
214-922-0316 • tlcc.dallas@att.net

November 5 & 6
T.E.C. - Texas Education Conference
Friday: 2:00 p.m. until 6:30 p.m.
Saturday: 9:00 a.m. until 10:00 p.m.

Renaissance Hotel
Austin, TX
Registration: \$85.00
Exhibit Booth \$295.00
(includes one registration)
Contact: Gregory Pynes
214.770.1609 • gregorypynes@connect.net
or Mary Lynn Novelli, CMP
214.346.1886 •
marylynn.novelli@anasazi.com

September 11
Basic Windows 97,
Power Point, Internets
Saturday, 8:00 a.m. - 5:00 p.m.

Richland College
12800 Abrams Road
Bonhan 014 (SABRE Lab)
Fee: \$99, members
Contact: M.T. Hickman
972-238-6097 • mthickman@dcccd.edu

November 13
Excel & ACCESS
Saturday, 8:00 a.m. - 5:00 p.m.

Richland College
12800 Abrams Road
Bonhan 014 (SABRE Lab)
Fee: \$99, members
Contact: M.T. Hickman
972-238-6097 • mthickman@dcccd.edu

October 9
Planet SABRE & Plansoft
Saturday, 8:00 a.m. - 5:00 p.m.

Richland College
12800 Abrams Road
Bonhan 014 (SABRE Lab)
Fee: \$99, members
Contact: M.T. Hickman
972-238-6097 • mthickman@dcccd.edu

December 11
Plansoft & Meeting Trak
Saturday, 8:00 a.m. - 5:00 p.m.

Richland College
12800 Abrams Road
Bonhan 014 (SABRE Lab)
Fee: \$99, members
Contact: M.T. Hickman
972-238-6097 • mthickman@dcccd.edu

For more information about any of these educational opportunities contact
Martí Fox, CTC (BTI Americas)
214-905-8550 • DEAL1FOX1@aol.com

EDUCATION NEWS

MPI D/FW Board Approves Independent Educational Needs Assessment Survey

The MPI D/FW Board of Directors recently approved an Educational Needs Assessment Survey to be prepared by an independent professional and distributed to our membership.

"This survey is an integral part of this chapter's strategic plan," said Tim Wade, CMP (Lennox Industries Inc.). "This action ensures that MPI D/FW will continue to focus on the educational needs of its membership well into the next century."

"The most accurate factor in determining excellence is providing education that allows our membership to face the myriad of challenges in today's industry," said Wade.

Under the guidance of the Membership Committee, Louis Phillips and Associates will direct this project.

A noted adult educator, Louis Phillips spent 20 years administering continuing education programs at the University of Georgia and Furman University. He has conducted numerous workshops on needs assessments for associations and has written several articles and book chapters on this topic.

Although the chapter has conducted surveys before, this will be the first one conducted by a third party, independent of the organization and its membership.

Several focus groups currently being conducted throughout the D/FW metroplex will contribute to the development of the survey.

With the assistance of facilitators, these groups, comprised of representatives of the MPI D/FW membership, will provide insight and direct input into determining what questions will be included in the survey.

The focus groups are meeting at various locations, thanks to the partnership of such companies as Omni Richardson and Omni Mandalay Hotels, Grapevine Convention Center, Lombardi Mare Restaurant, and the Wyndham Anatole Hotel.

The survey will be distributed to MPI members in September. Those who complete the survey will have an opportunity to win a free registration to the 2000 PEC Conference in Nashville, TN.

Coming in September:
**Educational
Needs
Assessment
Survey**

www.meetingexperience.com

'Platinum Series' Returns August 17

By Fred H. Knieberg, CMP
AFK & Associates, Inc.

MPI D/FW's second session in the "Platinum Series" will be held August 17 at Mary Kay Headquarters in Addison.

www.meetingexperience.com is the session title.

The Platinum Series consists of seven innovative, professionally facilitated educational opportunities developed in partnership with the Lore Institute in Durango, CO, in collaboration with Meeting Professionals International.

The first session in the Platinum Series, "Speaking the Same Language: the Art of Negotiation" won rave reviews by attendees.

The series is sponsored by Hilton and the MPI Foundation, with support provided by United Airlines.

In www.meetingexperience.com, participants will learn how to apply the essential elements of marketing to meetings and events, and utilize the Internet

to its fullest potential. The innovative combination of marketing and technology will demonstrate how to facilitate the flow of information faster and less expensively.

To accomplish this advanced learning in just three hours, registrants will receive pre-work and an initial self-assessment before the workshop. These will enable participants to maximize the session time with skill-building and essential information.

During the session, participants will create a practical, easily-implemented action plan for future skill-building and continued professional development.

Regardless of an individual's level of expertise or experience, this program will be of tremendous benefit to anyone in the meetings industry.

Don't miss this rare opportunity. Make your reservation early as the program limits the number of attendees. For registration information, see the insert in this month's *CURRENT*.

Platinum Series

www.meetingexperience.com

August 17 (Tuesday), 4-7 p.m.

Mary Kay Headquarters • 16251 Dallas Parkway • Addison

—See *CURRENT* insert for registration information.—



CMM CHAMPIONS' BREAKFAST

Sponsors

Appointments Promotional Advertising
Gale Sliger Productions
Gourmet Dallas Catering/Jim Lee
Special Events
Making Statements
Stationery & Invitations
MCI Performance Group
The Odee Company
Presentation Services
Vince Poscente International
VISTA Photography

Host

Wyndham Anatole Hotel

The Walk-A-While Committee produced the CMP/CMM Program in partnership with the CMP Committee of MPI D/FW for its 1998-99 project case study.

The WAW Committee

Patty Stern, Chair
Elizabeth Baryshev, Co-Chair
Leah Belasco
Deborah Comer
Alicia Harrison
Lisa Flick
Angela Gage
Tara Judd
Erin Longley
Damita Smith
Carla Williams

The CMP Committee

Mary Lynn Novelli, CMP Chair
Dana Nickerson, CMP Co-Chair
Karen Coughlin, CMP
Tracey Lake, CMP
Brenda Miller, CMP
Jim Monroe, CMP
Bill Reeser, CMP
Tracey B. Smith, CMP
Bruce Wolpert, CMP

You can't spell Champion without 'CMP'! CMPs and CMMs Lauded at First Annual Champions' Breakfast

North Texas Certified Meeting Professionals (CMPs) and Certified Meeting Managers (CMMs) were honored last month at the Inaugural CMP/CMM Recognition Champions' Breakfast at the Wyndham Anatole Hotel.

The event was designed *exclusively* for those meeting professionals who have obtained their CMP/CMM designation—the ChaMPions!

Featured presenter Vince Poscente, an Olympic champion, presented a special message about "achieving goals while always learning"—a topic perfectly tailored for the professionals in the room.



Colleen A.
Rickenbacher
Dallas CVB

The highlight of the morning was the presentation of The Colleen Rickenbacher, CMP Leadership Award—and the first recipient was a very surprised and happy Colleen A. Rickenbacher, CMP (Dallas CVB).

"I am so honored to have an award named for me and to have it presented to me as well. It is beyond my imagination," she said. "I feel overwhelmed by all of this. I truly don't think anyone can ever understand just how deeply I feel about this honor."

Mary Lynn Novelli, CMP (Sterling Hotels and Resorts), chair of the CMP Committee, presented the award, noting that she had to create a fake ballot to keep the element of surprise for Rickenbacher.

Chief Operating Officer David Dubois, CMP, CAE, of MPI International, discussed the differences between the CMP and CMM designations.

"The inaugural CMP/CMM Recognition Breakfast of Champions was the

vision of the CMP Committee to honor CMPs and CMMs and the Walk A While (WAW) Educational Series Committee," said Dana Nickerson, CMP (Square One Productions), co-chair of the CMP Committee.

"At the beginning of the year when the Walk A While curriculum was being developed, I knew the CMP Study Group wanted to create a special program honoring those who have achieved their CMP/CMM," said Peg Wolschon (Coach USA), 1998-99 vice president of education.

"After suggesting that WAW take this on as a real life learning experience, they worked hard on creating the ChaMPions Breakfast. The hands-on educational opportunity provided by this WAW format was invaluable, and the final event truly exceeded everyone's expectations," Wolschon said.

"Walk A While Chair Patty Stern (Carey Worldwide Transportation) and Co-Chair Elizabeth Baryshev (MCI Performance Group) saw the CMP/CMM Recognition Event as the perfect project case for the WAW Committee to produce," Nickerson said.

The WAW Committee worked diligently for eight months behind the scenes to produce this event. The committee was comprised of a mixture of seasoned planners along with planners who are newer to the industry.

Using the CMP Study Group Committee as its "clients," WAW selected the venue, created marketing materials, developed the audio-visual program, chose the speaker and designed the decor/floral.

Special amenities included silver pens engraved with "Certified Meeting Professional" and permanent name badges for the CMPs/CMMs.

EDUCATION NEWS

Congratulations and 'Hats Off' to All D/FW Area CMPs and CMMs!

- Anne E. Albright, CMP
Maurine G. Allen, CMP
Marta E. Alter-Lilly, CMP
Barbara Anderson, CMP
Rosanna M. Arnold, CMP
Brian D. Arscott, CMP
Allyson M. Ashley, CMP
Carol Ann Baker, CMP
Deborah Baum, CMP
Cheryl L. Beasley, CMP
Jim Belcher, CMP
Susan H. Bell, CMP
Dana D. Bellantone, CMP
Judy R. Benaroch-Johnson, CMP
Vinson D. Bogard, CMP
Erika Anne Bondy, CMP
J. William Boyd, CMP
Pete Boyd, CMP
Nancy Lee Bracalento, CMP
Shawn M. Braden, CMP
Laney Bratton, CMP
Mary Kay Breckenridge, CMP
Cathy Breden, CMP, CAE
Cynthia J. Breen, CMP
Ken Brisbane, CMP
Edye Brookshire, CMP
Margaret M. Brown, CMP
Connie Burnett, CMP
Bitsy J. Burns, CMP
Stanley V. Butler, CMP
Janet C. Buttimer, CMP
Linda S. Caldwell, CMP
Carolyn Carey, CMP
Susie Carr-Tennison
Michelle Carter, CMP, CHSP
Steven T. Clydesdale, CMP
Susan E. Conley, CMP
Sherri A. Cook, CMP
Melody Cooper, CMP
Charles E. Corrales, CMP
Karen M. Coughlin, CMP
Michaele A. Craddock, CMP
Karen Sue Crum, CMP
Marty M. Dahlgren, CMP
Marie A. Dahmer, CMP
Stacey E. D'Antoni, CMP
Michael T. Darst, CMP
Mary Dauteuil, CMP
Linda R. Davenport, CMP
Eileen M. Davis, CMP
Susan R. Davis, CMP
- Barbara J. Derksen, CMP
Norbert R. Dettmann, CMP
Beverly Dolan, CMP
Colleen K. Doucet, CMP
David A. DuBois, CMP, CAE
Dorothy Duke, CMP
Charlene Dykes, CMP
James R. Eanes, CMP
Lynn Erney, CMP
Angela Joan Fails, CMP
Phyllis Firebaugh, CMP
Gloria Ford-Hernandez, CMP
Kevin W. Foster, CMP
Steven G. Foster, CMP
Wendy Foster, CMP
Kimberley C. Fox, CMP
Blake S. Franklin, CMP
Betty E. Garrett, CMP
Mary German, CMP
Cindi L. Ghormley, CMP
Sally A. Goldesberry, CMP, CMM
Beth Grandel, CMP
Judy Grayson-French, CMP
Elizabeth Greenleaf, CMP
Corinne B. Guillery, CMP
Rebecca Halloran, CMP
Jill E. Heyerdahl, CMP
Linda D. Hill, CMP
Douglas E. Hoagland, CMP
Jeorgia Hopgood, CMP
Charles Hoster, III, CMP
Judith Houghton, CMP
Sherry Howell, CMP
Dee Johnson, CMP
Eric Johnson, CMP, CMM
Julie A. Johnson, CMP
Janet Johnston, CMP
Deronda Jones, CMP
Karen A. Jones, CMP
Jody Jones-Kirkland, CMP
Nikki Jorski, CMP
Linda Kakos, CMP
Paula Katrosh, CMP
Kimberly Shawn Kelley, CMP
Susan Kerigan, CMP
Thomas Kindler, CMP
Nancy Kirk, CMP
Fred H. Knieberg, CMP
Diane Knippa, CMP
Chantal Kruczek, CMP
Tracy L. Lake, CMP
- Debra C. Lakin, CMP
Charles Laterza, CMP
Paula Lawkis-Bruton, CMP
Susan Levick, CMP
Thomas Levine, CMP
Lynn E. Lewis, CMP
Sandra M. Lindstrom, CMP
Melissa S. Logar, CMP
Carla J. Lowe, CMP
Patricia A. Lytle, CMP
George Maldonado, CMP
Jeanette Mani-Thompson, CMP
Deborah S. Mann, CMP
Dana Manning, CMP
Katie Marion, CMP
Cyndi Martinez, CMP
Judith E. Mathews, CMP
Patricia McCain, CMP
Krystal A. McCoy, CMP
Marilyn McGuire, CMP
Renee D. McKenney, CMP
Mindy McLaughlin, CMP
Jennie McNeill, CMP, CMM
Jeffrey Means, CMP
Charlotte Merrill-Davis, CMP
Lesley J. Meyer, CMP
Brenda F. Miller, CMP
James C. Monroe, CMP
Jacques R. Monteil, CMP
Carmen Murphey, CMP
Julie A. Murphy, CMP
James W. Myers, CMP
Jay Naman, CMP
Syed Rizwan Naqvi, CMP
Kelly L. Newlon, CMP
Stephanie Neyhart, CMP
Dana Nickerson, CMP
MaryLynn Novelli, CMP
Beverly O'Laughlin, CMP
Lodi Palmer, CMP
Melissa Parks-Takamatsu, CMP
Lisa Parman, CMP
Terri Patterson, CMP
Sheri L. Pizitz, CMP, CSEP
Cindy Plotkin, CMP
Bernay Porter, CMP
Barbara L. Powell, CMP
Kami K. Price, CMP
Brad Randle, CMP
Melissa Rebowe, CMP
William Reeser, CMP
- William Cary Richmond, CMP
Michaelanne Richter, CMP
Colleen Rickenbacher, CMP
Richard Rivera, CMP
Susie Roberts, CMP
Gay C. Robson, CMP
Kelly F. Rotkewicz, CMP
Debra Jo Rubin, CMP
Susanne Ruffner, CMP
James Russell, CMP
Alainna S. Ryan, CMP
Lane Salvaggio, CMP
Nadine F. Shafer, CMP
Sally Shank, CMP
Rhonda Shannon, CMP
Sara Slow, CMP
Deborah Small, CMP
LaTrelle Smart, CMP
Beverly L. Smith, CMP
Mary Diane Smith, CMP
Tracey B. Smith, CMP
Irene Solymani, CMP
Lisa A. South, CMP
Sophia M. Staecker, CMP
Stephanie S. Stansfield, CMP
Leigh Ann Stockard, CMP
Monette Stockton, CMP
Maureen Storto, CMP
Jim Sturdivant, CMP
Mary Swaim, CMP
Dirk Thomas, CMP
Diane T. Thrasher, CMP
Patricia Tripp, CMP, CTC
Kim Twining, CMP
Mary C. Upton, CMP, CEM
Linda K. Vest, CMP
Renee W. Vincent, CMP
Tim Wade, CMP
Mollie S. Wallace, CMP
Angela Wallander, CMP
Pam Watkins, CMP
Deborah F. Weaver, CMP
Alicia V. Weddle, CMP
Paul Wedesky, CMP
Deborah J. Wheeler, CMP
Patti Wilke, CMP
Lucy H. Williams, CMP
Jennifer Winget, CMP, CHSP
Bruce Wolpert, CMP
Laura B. Yarbrough, CMP

JUNE AWARDS GALA

MPI D/FW Orchestrates Symphony of Celebration at the Morton H. Meyerson Symphony Center

Among many honors and recognitions:

Planner of the Year	Patti Wilke, CMP (Independent Planner)
Supplier of the Year	Michelle Carter, CMP, CHSP (Wyndham Anatole Hotel)
Rising Star	Patty Stern (Carey Worldwide Transportation)
Suzi Fiveash Award	O.D. O'Donnell (Nightlife Talent and Management Agency)
President's Award	Anna Squire (Stonebriar Country Club)
Program of the Year	'Overcoming the Unexpected'/Kevin Mellott (ERASE Enterprises)
Facility of the Year	Southfork Ranch and Conference Center (December Holiday Party)



Photos by VISTA



**Photos
by
VISTA**



Hall of Fame

Please salute the following companies and individuals for their contributions to the June Awards Gala

Facility

Morton H. Meyerson Symphony Center
Bruce McPherson

Reception & Dinner

Culinaire International
Jill Holley

Official Sponsor, Destination Trade Show & Prize Drawing
Las Vegas Convention & Visitor Authority
Tom Papageorge

Decorations

The Party & Event Designers
Howard Eckhart

Staging & Draping

Freeman Decorating Company
David Gisler

Event Production

AVW Audio Visual, Inc.

Entertainment

BRAVO Entertainment
Debbie Meyers

Valet Parking

Valet Parking Services, Inc.
Alan Butler

Printing – Program

Results Marketing & Advertising

Miscellaneous Contributions

Pyrotex
Randy Beckham

The Trade Group
Chapter Information Booth
Jennifer Feilke

Wyndham Anatole Hotel
Michelle Carter, CMP, CHSP
Table Host Coordinator

June Awards Gala Committee

Debbie Meyers
BRAVO Entertainment
Jim Monroe, CMP
Gale Sliger Productions
Paula Fenner
Hotel Inter-Continental
Howard Eckhart
The Party & Event Designers
David Gisler
Freeman Decorating Company
Dana Nickerson, CMP
Square One Productions
Peg Wolschon, CTP
Kerrville/Coach USA
Kerri Atterberry
Wyndham Anatole Hotel
Steven Foster, CMP
Circle R Ranch

Colleen A. Rickenbacher, CMP
Dallas Convention & Visitors Bureau
Betty E. Garrett, CMP
Garrett Speakers International, Inc.



We anticipate more than your attendees' need for a great guest room.

Swissôtel Lima and **Swissôtel Quito** offer luxurious, modern facilities for state-of-the-art meetings. Our professional staff and talented catering group are committed to making your event a success. In an effort to provide you with even better service, we proudly announce the opening of our Global Sales Office in Texas.

For information and reservations, call your chapter member Stephanie Fues at **214-319-2442**.

swissôtel 

A Passion for Perfection™

www.swissotel.com

Amsterdam, The Netherlands

Atlanta, USA

Basel, Switzerland

Beijing, PR China

Boston, USA

Brussels, Belgium

Cairo, Egypt

Chicago, USA

Dalian, PR China

Dusseldorf, Germany

Geneva, Switzerland

Göcek, Turkey (2001)

Istanbul, Turkey°

Lima, Peru°

Montreux, Switzerland°

New York, USA

Quito, Ecuador°

Seoul, South Korea

Sharm El Sheikh, Egypt (2000)

Washington, DC, USA°

Zurich, Switzerland

° Members of
**The Leading Hotels
of the World**

**MPI D/FW
Mailing List and
Labels For Sale**



The MPI D/FW mailing list, which consists of approximately 820 meetings professionals, can be purchased in ready-to-mail label format. The list, which is updated monthly, is sorted alphabetically, or by planner or supplier categories.

The cost is \$150 for MPI D/FW members; \$250 for members of other MPI Chapters; and \$300 for non-members.

To order, contact Randie Charnes, 972-506-7485 or rcharnes@msn.com

Legendary Event Excellence!



Star in your own award-winning event at Southfork! With over 63,000 square feet of indoor event and meeting space, we can help you direct events for 10 to 10,000. Creative event themes, full-service catering, along with decor and entertainment planning make us the perfect location for your next meeting or special event. Our cast of characters is famous. Our service is legendary. Let us make your next event a true "Dallas" production.



P.O. Box 516009 • Dallas, TX 75251 • 972-442-7800 • FAX 972-442-5259

**Carol
Marks
Music**
& Entertainment Agency

We book bands committed to delivering outstanding professional performances for corporate & private engagements!

615 Business Pkwy • Richardson, TX 75081
972-231-4091
carolmarksmusic.com

**SMART
CARD**

*The Educational
Pass to Learning*

The \$75 SMART CARD admits MPI D/FW members to all educational events.

For more information, call
Lianne Pereira
972-855-1676

**Third Annual
Texas
Education
Conference**

November 5-6
Renaissance Austin Hotel

MPI Hill Country
MPI Houston Area
MPI D/FW

Storms
CRISIS MANAGEMENT
 &
CONTINGENCY
PLANNING
Earthquakes

09:00 AM – 4:30 PM
AUGUST 10, 1999

**“FAILURE TO PREPARE IS
 PREPARING TO FAIL”**
BENJAMIN FRANKLIN

Fire

**Y
2
K**

Is your organization prepared for crisis situations?

Attend this dynamic one-day program and learn practical information that will assist you in preparing for and managing crisis situations. The program will address command and control issues, organizational design of your management team, and leadership practices during crisis management. The program will place special emphasis on Y2K contingency issues.

ERASE Enterprises is the premier provider of contingency plans for the meetings and events industry. For registration information call --

ERASE
1-800-372-7330

ERASE Enterprises is a MPI member organization

REMARKABLE MEETINGS



Our experienced staff of meeting professionals will ensure your meeting is truly remarkable. We offer 20,000 square feet of flexible meeting space and a convenient location midway between the airport and the attractions. We also offer a full-service audiovisual staff and a creative catering team.

SPECIAL OFFER

Ask how you can receive a complimentary welcome reception for your group.

For reservations and information, please call 407-859-1500.



adam's mark.
 orlando

In The Center Of Orlando Excitement
 1500 Sand Lake Road, Orlando, FL 32809
 407-859-1500 • Fax: 407-855-1585

**Jan Pollard Award
 for Professional Growth**



Having a problem funding the WEC or another important professional education event? Apply for MPI D/FW's Jan Pollard Award for Professional Growth.

When longtime MPI D/FW Chapter contributor and previous board member Jan Pollard died in February 1998, MPI D/FW renamed the Professional Growth Award program—benefiting ongoing professional educational needs of chapter members—the Jan Pollard Award for Professional Growth.

To participate on the JPA committee, apply for scholarship funds, or donate prizes for monthly drawings, contact Gail Lemaire (Hotel InterContinental Dallas), 972-789-3037.



M.T. Hickman
Richland College
'Grapevine' Columnist

Heard it through the Grapevine!



Mitchell Cathey
Texas De Brazil Grill House
'Grapevine' Columnist

Bethani Blair, director of sales at *The Guest Lodge at The Cooper Aerobics Center*, and her husband Kevin are expecting their first child in October.

Steve Flores is the new director of business development, *Eddie Deen's Ranch at Downtown Dallas*.

David Little and **Debra Chism** left the *Ramada-Market Center* to become general manager and sales manager, *The Guest Lodge at The Cooper Aerobics Center*.

Bevin Holden left the *Bronco Bowl* to seek new opportunities.

Linda Leroy was promoted from costing analyst to regional sales director, *SEI Incentives*.

Mike McCoy will leave Dallas and *Lone Star Park* and move to California to work with the *Mighty Ducks* hockey team.

Brenda Miller, CMP, was named director of marketing, *Events Unlimited Inc.* Her former position was director of sales, *Malibu Speed Zone*.

Paula Mize, director of sales, *Dallas Market Center* will marry Tim Kelley, director of food & beverage, *Dallas Convention Center* on July 21 at the *Morton H. Meyerson Symphony Center*.

After 11 years with the *Infomart*, **Kami Price** has joined *Nth Degree* as events manager.

Krystal Rodriguez has been appointed express sales manager for the *Omni Dallas*

Park West Hotel. Her former position was senior sales manager, *Radisson Hotel Central* in Dallas.

Marcy Roitman was promoted from director of sales to national sales manager, *Grapevine Convention & Visitors Bureau*.

Brian Smiley is the new events manager, *SEGA Gameworks*. His former position was sales manager, *Yellow Rose Touring and Special Events*.

Cindy Shelley resigned her meeting planner position, *Dr Pepper*, to become a full-time mom.

Tom Yates, formerly with *Culinaire International*, accepted the position of social catering for *Le Meridien Hotel*.

Gregory Pynes, Hand & Associates Marketing Communications, was honored at the AIM awards in Colorado Springs as top winner for an event and fashion show staged in conjunction with *March Mega Market* in Dallas.

Ev Barnes, former sales manager for *Rainforest Café*, is the new general manager for *Mondo's Restaurant* due to open in September across from *Nordstrom's* at the *Galleria*.

Mona Kestler has left *Sunbelt Motivation & Travel* to pursue new interests.

Cindy Eubanks, program manager-events marketing, *Sprint*, was recently engaged to be married while in Paris, France. She will wed in Dallas November 20.

Melissa Parks, CMP, married Yoichi Steve Takamatsu April 10 in Waco. Melissa is manager of training for *H.D. Vest Financial Services*. Steve is director of financial planning for *ClubCorp*.

To submit items for this column contact

M.T. Hickman
(Richland College)
972-238-6097; fax 972-238-6333, or
mthickman@dcccd.edu; or
Mitchell Cathey
(Texas De Brazil Grill House),
972-385-1000; fax 972-385-1009.



RESEARCH

into the future of the
meeting industry with the
latest learning techniques.

DEVELOPMENT

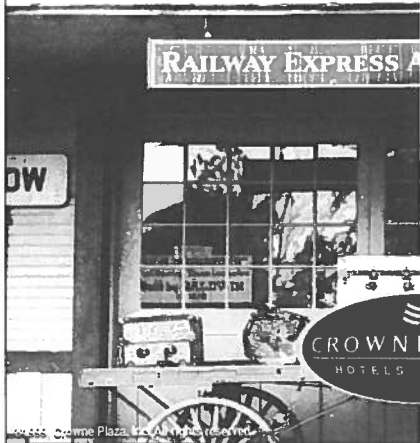
of the leading-edge
programs and technology
for the meeting industry.

MPI FOUNDATION

PREPARING MEETING PROFESSIONALS FOR THE FUTURE

To get involved, call (972) 702-3060 or fax (972) 702-3070 or
e-mail 74774.3267@compuserve.com

- MARKET CENTER
- DALLAS
- ADDISON



Conduct Your Next Meeting At One Of The Crowne Plaza Hotels In Dallas

Great Locations

Find us wherever you need to be: near downtown on the Stemmons corridor...in Addison near the Tollway...
and on LBJ Freeway at Highway 75.

Miles for Meetings

Book a meeting at a Dallas-area Crowne Plaza hotel before December 28, 1999, occupy at least 15 rooms
any one night during the event, and 10,000 bonus miles are yours!

Call us Today.

The New Address
For The
Savvy Traveler.™

To get the most mileage for your next meeting, call one of the following locations:

Crowne Plaza Suites Dallas

7800 Alpha Road Dallas Texas 75240
972-233-7600

Crowne Plaza Dallas Market Center

7050 Stemmons Freeway, Dallas Texas 75247
214-630-8500

Crowne Plaza North Dallas/Addison

14315 Midway Road, Addison Texas 75001
972-980-8877

Contact the hotels directly, or call toll free 1-800-2CROWNE

Independently owned by FelCor Lodging Limited Partnership and operated by Bristol Hotels & Resorts

Delta Air Lines

Proud Sponsor of The MPI Kids Charity Ball 1999!

*If you're planning a meeting give us a call first!
You'll find a Delta Meeting Network Representative can help you
with all your air travel needs, no matter how difficult they may seem.*

*Call Delta Meeting Network at 800-241-6108
or visit our website at www.meeting.delta-air.com.*

*Air Transport World Magazine has honored our growing success
in customer service, financial performance, and other areas
by naming Delta the global "Airline of the Year" for 1998.*

Delta operates 125 daily jet departures out of DFW with one convenient terminal 4-E. Delta, Delta Express, The Delta Shuttle, The Delta Connection Carriers and Delta's Worldwide Partners operate more than 5000 flights each day to 350 cities in 60 countries.

WHERE THERE'S A WYNDHAM, THERE'S A WAY

We can arrange
a meeting across town.
Or across country.



Wyndham Buttes Resort
Tempe, AZ



Wyndham Franklin Plaza
Philadelphia, PA



Wyndham Harbour Island
Tampa, FL

At Wyndham, we can handle anything from intimate receptions to sophisticated multimedia productions at more than 125 locations throughout the United States, Canada and the Caribbean. From prime center city locations to convenient airport and suburban settings. Not to mention our dazzling resort destinations. And with us, you get the right space, the right equipment and – as always – the right attitude. That's The Right Way. The Wyndham Way. For more information, contact National Group Sales at 800-327-8321.



WYNDHAM HOTELS & RESORTSSM

The Right Way. The Wyndham Way.

800-327-8321

www.wyndham.com

CONTINENTAL U.S.: Albuquerque • Atlanta area • Birmingham • Boston • Bothell • Brookfield • Charlotte • Chicago • Cleveland • Columbus • Dallas • Denver
Detroit • Durham • Fort Lauderdale • Galveston • Harrisburg • Houston • Indianapolis • Kansas City/Overland Park • Knoxville • LaGuardia Airport (NOT AFFILIATED
WITH THE WYNDHAM HOTEL IN MANHATTAN) • Lexington • Long Island (NOT AFFILIATED WITH THE WYNDHAM HOTEL IN MANHATTAN)
Los Angeles area • Miami • Milwaukee • Minneapolis • Mount Olive • Myrtle Beach • Nashville • Newark • New Orleans • Omaha • Orange County • Orlando • Palm Springs
Philadelphia • Phoenix • Piscataway • Pittsburgh • Richmond • Salt Lake City • San Antonio • San Diego • San Francisco area • San Jose • Seattle • St. Louis • Tampa
Tempe • Toledo • Washington D.C. • Wichita • Wilmington CANADA: Toronto • Montréal CARIBBEAN: Aruba • Jamaica • Puerto Rico • St. Thomas, V.I. • St. Lucia, W.I.

OMNI RICHARDSON HOTEL



**OMNI HOTEL ELEGANCE
CORPORATE CONVENIENCE**

In the Heart of the "Telecom Corridor"®

- ◆ 342 Guest rooms including 6 suites
- ◆ Omni Club Concierge Levels with Lounge
- ◆ Function space and breakouts for up to 1000
- ◆ Heated outdoor pool with Jacuzzi
- ◆ Fitness Center & On Site Massage Therapist
- ◆ Chase Oaks Golf Club within 8 miles

OMNI RICHARDSON HOTEL

701 East Campbell Road
Richardson, TX 75081
972-231-9600 Phone
972-231-7384 Sales Fax

Don't Rough It. Plan your next meeting with us.



Double Diamond Golf Resorts & Conference Centers

Wouldn't you rather be surrounded by golf courses and lake views instead of skyscrapers and highways? Let Double Diamond Golf Resorts and Conference Centers take you out of the rough and on to the green.

- | | |
|--|----------------------------------|
| ◆ Conference centers | ◆ 19th Hole Grills and Pro Shops |
| ◆ Spacious guestrooms and condominiums | ◆ Full service marinas |
| ◆ Championship golf courses | ◆ Fitness centers |
| ◆ Outstanding dining | ◆ Pools |
| | ◆ Tennis courts |

White Bluff

• RESORT •
LAKE WHITNEY
www.whitebluff.com

THE CLIFFS

• RESORT •
POSSUM KINGDOM LAKE
www.thecliffs.com

**Call Group Sales for information on
Corporate Meeting Packages
at 1-800-324-7438 ext. 9805.**

**\$2.5 MILLION
ROOM
RENOVATION**

Not Your Basic Meeting Facility.

There's nothing like meeting at the Lake of the Ozarks – for the sheer beauty alone.

The Lodge of Four Seasons is a unique yet practical choice for large or small meetings – offering newly renovated rooms, award-winning restaurants and a wide array of lake activities – with meeting facilities that will exceed most planners' expectations.

The Lodge also offers two championship golf courses – one designed by the legendary Robert Trent Jones, Sr.

So plan to meet at The Lodge of Four Seasons. Where it's everything but ordinary.




THE
LODGE
OF FOUR SEASONS
EVERYTHING BUT ORDINARY

State Road HH, Lake Ozark, MO 65049

1-800-711-8983
www.4seasonsresort.com

*Call
For Our NEW*
MEETING PLANNER KIT

or visit us at www.plansoft.com

MPI

MEETING PROFESSIONALS INTERNATIONAL®

Committed to Educational Leadership

Dallas/Fort Worth Chapter
PMB 259
7750 North MacArthur Blvd.
Suite 120
Irving, TX 75063-7501

FIRST-CLASS MAIL
U.S. POSTAGE
PAID
DALLAS, TX
PERMIT NO. 1930



DALLAS/FORT WORTH CHAPTER

*Window of
Opportunity*



*Look Into
Del Lago*



- 60,000 Square Feet of Flexible Meeting & Function Space
- 310-Room All-Suite Tower
- 35 Two-Bedroom Golf Cottages
- 12 Lakeside Villas
- 18-Hole Championship Golf Course

- Full Service Marina on 22,000-acre Lake Conroe
- Fresh Water Beach
- Health Spa & Fitness Center
- Just 45 Minutes from Houston's George Bush Intercontinental Airport

Your vision is our quest
 **DEL LAGO™**
America's Premier Waterfront Conference Center & Resort

877-348-1542 • www.dellago.com
600 Del Lago Blvd. • Montgomery, Texas 77356-5349

**MPI DALLAS/FORT WORTH CHAPTER
MAY 1999 NEW MEMBERS**

Leslie V. Bentley PO⁴D 8
Wyndham Hotels and Resorts
1950 Stemmons Freeway #6001
Dallas, TX 75207
214/863-1623 (phone) & 214/863-1611 (fax)
e-mail addr: lbentley@wyndham.com

Barbara L. Black PO⁴D 1
The Davis Incentive Group
13643 Beta Rd.
Dallas, TX 75244
972/702-0046 (phone) & 972/702-0074 (fax)
e-mail addr: davisincen@aol.com

Sheryl D. Black PO⁴D 9
American Airlines
4333 Amon Carter Blvd. MD 5435
Fort Worth, TX 76155
817/931-6862 (phone) & 817/963-1904 (fax)
e-mail addr: sheryl_black@amrcorp.com

Brian J. Butler PO⁴D 7
American Heart Association
7272 Greenville Ave.
Dallas, TX 75231-459
214/706-1671 (phone) & 214/458-0032 (fax)

Chad M. Cuddy
Denver Marriott Tech Center
4900 S Syracuse St.
Denver, CO 80237
303/740-2530 (phone) & 303/770-5112 (fax)

Bryan L. Davis PO⁴D 8
Hyatt Regency Dallas Reunion
300 Reunion Blvd
Dallas, TX 75207
214/712-7262 (phone) & 214/651-0018 (fax)
e-mail addr: bdavi@dfwrdpo.hyatt.com

Cynthia Del Toro PO⁴D 1
Erase Enterprises
2611 Westgrove Dr., #107
Carrollton, TX 75006
972/248-1122 (phone) & 972/248-3344 (fax)
e-mail addr: administration@erase.com

Julie E. Driver Grau PO⁴D 5
International Speakers Bureau Inc.
2528 Elm St #200
Dallas, TX 75226
214/744-3885 (phone) & 214/744-3888 (fax)
e-mail addr: julie@isbsspeakers.com

Kristin Elmore
J Driscoll & Assoc Inc
15851 Dallas Parkway #940
Addison, TX 75001
972/701-9802 (phone) & 972/701-9337 (fax)
e-mail addr: kelmor@jdriscoll.com

Jeffrey F. Erb PO⁴D 7
Personal Computer Rentals Corp
1930 Putman Way
Garland, TX 75040
214/924-0440 (phone) & 972/870-9565 (fax)
e-mail addr: dikotomy@flash.net

Dan Estatico PO⁴D 8
Hyatt Regency
300 Reunion Blvd
Dallas, TX 75207
214/712-7258 (phone) & 214/651-0018 (fax)
e-mail addr: destatic@dfwrdpo.hyatt.com

Dvorah A. Evans PO⁴D 5
Dallas Black COC
2838 MLK Jr Blvd
Dallas, TX 75215
214/421-5200 (phone) & 214/421-5510 (fax)
e-mail addr: daedbcc@aol.com

Melyssa D. Fish PO⁴D 6
Holiday Inn Select Love Field
3300 W Mockingbird Ln
Dallas, TX 75235
214/654-1030 (phone) & 214/654-1099 (fax)

Dana M. Gibson PO⁴D 9
Embassy Suites-Outdoor World
2401 Bass Pro Dr
Grapevine, TX 76051
972/724-2600 (phone) & 972/724-2670 (fax)

**MPI DALLAS/FORT WORTH CHAPTER
MAY 1999 NEW MEMBERS**

Janet Gregg **PO⁴D 10**
Texas Lils Dude Ranch & Special Events
1125 S Mulkey Ln
Justin, TX 76247
817/430-0192 (phone) & 817/430-0984 (fax)

Mark R. Jordan **PO⁴D 9**
Mark Jordan Entertainment
4709 Colleyville Blvd #580 PMB 245
Colleyville, TX 76054
817/281-8455 (phone) & 817/281-3050 (fax)
e-mail addr: mrijpts@aol.com

Kevin D. Jost **PO⁴D 1**
J & S Audio Visual Inc
3373 Towerwood Dr
Dallas, TX 75234
972/241-5444 (phone) & 972/247-2590 (fax)
e-mail addr: kevinj@jsav.com

Karen D. Morgan **PO⁴D 6**
Outstanding Productions
2933 Ladybird Ln
Dallas, TX 75220
214/350-6282 (phone) & 214/350-9188
e-mail addr: kmorgan314@aol.com

Beth A. Napolitano **PO⁴D 2**
Sullivans Steakhouse
17795 N Dallas Parkway
Dallas, TX 75287
972/267-3432 (phone) & 972/267-9898 (fax)

Connie R. Nesby **PO⁴D 5**
Center for Community Cooperation
2900 Live Oak St
Dallas, TX 75204
214/821-0911 (phone) & 214/824-7840 (fax)

Deborah A. Perkins **PO⁴D 7**
Double Diamond Resorts
4849 Greenville Ave. #1300
Dallas, TX 75206-414
214/706-9805 (phone) 214/692-9529 (fax)
e-mail addr: dperkins@ddresorts.com

Ronny E. Region, CHA **PO⁴D 10**
Hotel Assn of Tarrant County
6910 Richlynn Ter
Fort Worth, TX 76118
817/284-1771 (phone) & 817/595-4184 (fax)

Hayley M. Rubis **PO⁴D 9**
Galactic Marketing Incentives
1903 Stadium Oaks Ct
Arlington, TX 76011
817/275-8611 (phone) & 817/275-2909 (fax)
e-mail addr: hrubis@galachiemarketing.com

Amber E. Schlaht **PO⁴D 8**
Crowne Plaza
7050 Stemmons Fwy
Dallas, TX 75247
214/630-8500 (phone) & 214/630-0037 (fax)
e-mail addr: jschulzel@bristolhotels.com

Melissa L. Smith **PO⁴D 6**
Hilton Hotels
4333 Stanford Ave
Dallas, TX 75225
972/701-3728 (phone) & 972/898-1943 (fax)

Elia M. Soto **PO⁴D 7**
Student
8522 Park Ln U-19
Dallas, TX 75231-631
214/965-2283 (phone) & 214/965-2428 (fax)

Jimi K. Willis **PO⁴D 4**
Promotional Products Assn Intl
3125 Skyway Cir N
Irving, TX 75038-352
972/258-3035 (phone) & 972/258-3004 (fax)
e-mail addr: jimiw@ppa.org