

CURRENT

Meeting Professionals International

June 1999

Dallas/Fort Worth Chapter

Get Your Motor Running!! MPI D/FW Hits the Highway to Texas Motor Speedway

The May 27 chapter meeting was held at The Speedway Club, a brand-new facility at the Texas Motor Speedway in Fort Worth. For more photos of the event see pages 14-15.



'A Festival of Music'— TMKCB 1999 a Crowd Pleaser



TEAM! Together Everyone Achieves More!

Team members that organized The MPI Kids Charity Ball 1999 celebrate yet another successful fundraiser benefitting several charities for children throughout the D/FW metroplex. For more photos of the event see pages 14-15.



In this issue

President's Message	3
June Awards Gala	4
Chapter Partners	6
Rickenbacher Feature	9
Education News	11
The MPI Kids Charity Ball	12
Last Month's Meeting	14
World Education Congress	21

CURRENT MPI

MEETING PROFESSIONALS INTERNATIONAL®

Committed to Educational Leadership

Dallas/Fort Worth Chapter Office
7750 North MacArthur Blvd.
Suite #120-259
Irving, TX 75063
Secretary: Randie Chames
972-869-3836
Fax: 972-506-7485
rchames@msn.com

Editor
Gracie Hatfield Hilton
The Write Stuff
metro 817.467.5449
gracie@eaze.net

Advertising Chair
Gregory Pynes
Hand & Associates Marketing Communications
214.770.1609

**Vice President Public Relations/Marketing
Managing Editor**
Marsha Singer
The Dallas Director
214.823.4370

Photographer
Jim Woods
VISTA Photographic & Video Group
972.380.0985

Regular Contributors and Writers
Mitchell Cathey
Texas De Brazil Grill House • 972-385-1000
Delinda Dudley
Fun Factory • 972.271.7444
M.T. Hickman
Richland College • 972.238.6097
Pat McCain, CMP
Krisman Group • 972.458.8692
Dana Nickerson, CMP
Square One Productions • 214.343.8067
Colleen A. Rickenbacher, CMP
Dallas CVB • 214.571.1040
Ann Stetson
Le Meridien Hotel • 214.855.1735
Stephanie Schroeder
Starwood Hotels & Resorts • 972.238.1008

MISSION STATEMENT

Meeting Professionals International is the pivotal force in positioning meetings as a primary communication vehicle and a critical component of an organization's success. Meeting Professionals International leads the meetings industry by serving the diverse needs of all people with a direct interest in the outcome of meetings, educating and preparing members for both their changing roles and validating relevant knowledge and skills, as well as demonstrating a commitment to excellence in meetings.

The *CURRENT* is published 12 times yearly for the D/FW Chapter of Meeting Professionals International, the industry's leading educational and networking resource in meetings management. Statements of fact and opinion are the responsibility of individual writers and do not imply collective opinion of the officers or members of MPI. The *CURRENT* and MPI D/FW Board of Directors are not responsible for the content of advertisements. Any complaints concerning an ad should be directed to the advertiser.

Upcoming Chapter Meetings

June 24, Thursday
"Annual Awards Gala"
Morton H. Meyerson Symphony Center
6:30 p.m.

1999-2000 Meeting Dates

Plans are underway for MPI D/FW monthly chapter meetings for the 1999-2000 administrative year. Watch this space for developing details. Dates are:

1999	2000
July 22	January 27
August 26	February 24
September 23	March 23
October 28	April 27
November 18	May 25
December 16	June 22

MPI

MEETING PROFESSIONALS INTERNATIONAL®

Committed to Educational Leadership

MPI International Headquarters
4455 LBJ Freeway • Suite 1200
Dallas, Texas 75244-5903
972-702-3000
FAX: 972-702-3070
<http://www.mpiweb.org>

ISSUE

July
inserts due July 5
August
inserts due August 9
September
inserts due Sept. 6

DEADLINE

June 18, Friday
July 16, Friday
August 20, Friday

CURRENT Deadlines



E-mail copy (Microsoft Word 7/Windows attachment) to
gracie@eaze.net

President's Message

MPI D/FW: The Year in Review

Thanks to each of you for a very successful 1998-99 year for our chapter. You, our members, provided the Board of Directors with information to set our chapter goals, all of which have been met!

Highlights of the 1998-99 chapter year

- Surpassed 800 members and are now at 840, our highest membership in history
- Hired a new chapter administrator and completely streamlined the registration process
- Established online credit card payment for monthly meetings
- Increased member services with new member packets, enhanced orientation at monthly meetings, and improved buddy program and phone tree services



Colleen Rickenbacher,
CMP
Dallas CVB
D/FW Chapter President

- Created a more accurate and up-to-date database which has assisted in our member retention efforts
 - Provided outstanding community service opportunities to our members: Aids Lifewalk '98; North Texas Food Bank Pumpkin Party (assisted throughout the year with surplus foods from conventions and hotels); Various Accessory and Clothing Drives throughout the year; Canned Food Drives for Hopes Door and the victims of the Oklahoma tornadoes; Served Meals on Wheels for individuals and families at Thanksgiving
 - Produced and mailed the new membership directory and chapter resource information
 - Produced very successful MPI Kids Charity Ball, and received our first Diamond Level Sponsor (\$10,000) in our history
 - Continue to produce a member-driven newsletter, the *CURRENT*, and set advertising records
 - Increased meeting and recruiting new guests at each monthly meeting. Increased from meeting 10-14 guests per meeting to now over 50 per meeting.
 - Implemented new phone, fax and e-mail campaign to retain and involve members
 - Controlled our budget and were able to contribute \$5,000 to our reserve fund
 - Developed an investment plan for our chapter to achieve growth in our cash assets
 - Developed sponsorship guidelines to help underwrite meeting expenses and returned chapter to profitability on each meeting.
 - Increased planner attendance at monthly meetings by 7.1%
 - In addition, six out of ten programs have exceeded all attendance records and increased overall attendance by 10%
 - "Resource Booth" at each monthly meeting to provide hands-on information to our guests and members for committees, projects and upcoming events
 - Unveiled new table host chair covers at monthly meetings to provide information to attendees more efficiently
 - 10% increase in participation at educational programs, and increase in quality of the programs
 - Continued growth in the Certified Meeting Professional study group programs
 - One of the first MPI chapters to offer the Platinum Series program to our members
 - Continued programs with Richland College with students in the Travel, Exposition and Meeting Management program through technology educational programs, scholarships, intern programs, mentor programs and student involvement in our registration process
 - Developed a more hands-on Walk-A-While program that has grown and involved our members with all aspects of our industry
 - Created the first CMP/CMM recognition breakfast to acknowledge the achievements of these members that have received their certifications
- What a year! Thanks to the entire membership for making this possible. The MPI D/FW Chapter continues to grow in strength and worth each year and I am very honored and pleased to have had the pleasure of serving as your 1998-99 president.

MPI

MEETING PROFESSIONALS INTERNATIONAL®
Committed to Educational Leadership

Meeting Professionals International is the world's largest association of meetings professionals with more than 14,500 members in 51 countries and 58 chapters and three clubs. MPI serves as the pivotal force in positioning meetings as a primary communication vehicle and a critical component of an organization's success. MPI leads the meeting industry by serving the diverse needs of members and nonmembers alike through its commitment to quality education, continuous improvement and excellence in meetings while upholding high ethical standards.

President

Colleen A. Rickenbacher, CMP
Dallas Convention & Visitors Bureau
214.571.1040

President-Elect

Steven C. Foster, CMP
Circle R Ranch
817.430.1561

Immediate Past President

Gregory Pynes
Hand & Associates Marketing Communications
214.770.1609

Vice President of Education

Peg Wolschon, CTP
Gray Line/Kerrville Bus/Coach USA
972.263.0294, #103

Vice President of Membership

Tim Wade, CMP
Lennox Industries Inc
972.497.5039

Vice President of Programs

Betty E. Garrett, CMP
Garrett Speakers International, Inc.
972.513.0054

Vice President of Administration

Linda Vest, CMP
Meeting Savers Inc.
972.781.2223

Vice President of PR/Marketing

Marsha Singer
The Dallas Directory, Inc.
214.823.4370

Vice President of Finance

Melissa Parks Takamatsu, CMP
H.D. Vest Financial Services
972.870.6160

BOARD OF DIRECTORS

Cheryl L. Beasley, CMP
SABRE
817.963.2025

Lynn Lewis, CMP
Ernst & Young, LLP
214.665.5785

Tony Cummins
Adam's Mark Hotel Dallas
214.922.0316

Delinda Dudley
Fun Factory Decorations & Special Events
972.271.7444

Cyndi Martinez, CMP
Hotel InterContinental Dallas
972-789-3038

Tamara Quilty
Dr Pepper/Seven Up, Inc.
972.673.7288

Stephanie Schroeder
Starwood Hotels & Resorts
972.238.1008

LeeAnn Harle
Renaissance Meetings & Incentives
214.871.1191

JUNE AWARDS GALA

MPI D/FW Orchestrates Symphony of Celebration

By Steven G. Foster
Circle R Ranch

WOW....what a year! Join fellow MPI D/FW chapter members at the *Symphony of Celebration* in honor of good times and great accomplishments at the Annual Awards Gala, Thursday, June 24, at the Meyerson Symphony Center.

The event will feature the many successes enjoyed by MPI D/FW during the 1998-99 "TEAM: Together Everyone Achieves More" term of President Colleen A. Rickenbacher, CMP (Dallas Convention & Visitors Bureau.)

Registration opens at 5:30 p.m. Orientation takes place in the Horchow Hall, lower level, at 6:00 p.m.

Enjoy wine and hors d'oeuvres in the Opus lobby at 6:00 p.m. with background music provided by Bravo! Entertainment. Committee members will be honored during a special recognition.

Members of the Las Vegas Convention and Visitor Authority are sponsors of this gala evening. Tom Papageorge, sales executive, will be present to showcase this unique venue and to award a special prize at the end of the evening. You must be present to win!

After the *Symphony of Celebration* Awards Gala program at 7:00 p.m. in the Meyerson Hall, attendees will move into the Renaissance Foyer for an elegant dinner while enjoying the music of Jeff Taylor Quartet provided by Bravo! Entertainment.

Special awards will be presented throughout the evening, including Circle of Commitment Membership pins, Suzie Fiveash for membership recruitment, Perfect Attendance for monthly meetings, Program of the Year and Facility of the Year.

Other special recognitions include Rising Star, Planner of the Year and Supplier of the Year. The President's Award will go to the most deserving individual, based upon contribution to

the chapter and to the community.

Edward G. Simeone, CMP, 1999-2000 Chairman of the Board for Meeting Professionals International, will conduct the installation of the 1999-2000 MPI

Sliger Productions), Paula Fenner, (Hotel Inter-Continental), David Gisler (Freeman Decorating Co.), Dana Nickerson, CMP, (Square One Productions), Peg Wolschon, CTP (Coach USA), Tracey

See pages 6-7 for more on the June Awards Gala

- 1999-2000 Chapter Partners
 - Circle of Commitment Pins Recipients
 - Chapter Awards Nominees
-

D/FW Board of Directors. Simeone is Manager of Worldwide Events for EMC2 Corporation.

Former MPI D/FW Chapter President Phyllis Firebaugh, CMP, of SEI Incentives will preside over the installation of incoming MPI D/FW President Steven G. Foster, CMP.

June Awards Gala committee members are: Debbie Meyers (Bravo! Entertainment), Jim Monroe, CMP, (Gale

Smith, CMP, (RIA) and Betty E. Garrett, CMP (Garrett Speakers International, Inc.).

Hosts for the June Awards Gala, Symphony of Celebration, are: Las Vegas Convention and Visitor Authority, Meyerson Symphony Center, Culinaire International, Freeman Decorating Company, AVW Audio Visual, Inc., Bravo Entertainment, Valet Parking Services, Inc., and Results Marketing & Advertising.

June Host Facility

Morton H. Meyerson Symphony Center

The Morton H. Meyerson Symphony Center was created as a response to the citizens of Dallas desiring a major facility for cultural activities and gatherings and the Dallas Symphony Orchestra's need for a new home. Open spaces and touches of elegance are evident everywhere.

The building's impressive architectural features and unsurpassed acoustics have made the Meyerson a pre-eminent environment for an exceptional event in Dallas. Annually, the Meyerson hosts more than 325 concert hall events, 20-30 banquets, 200 photo and film shoots and 800+ hours of rehearsal and recording activity.

The centerpiece of the Meyerson is the McDermott Concert Hall, a European "shoebox" style music chamber, designed to establish intimacy between performer and audience. The salient features include reverberation space around the top of the hall concealed behind 74 thick concrete doors weighting 2.5 tons each. These chamber doors can be opened and closed to increase or reduce reverberance.

Rising the full height of the concert chamber, the Herman W. and Amelia H. Lay Family Concert Organ is the visual focal point. This state of the art organ consists of: 4,535 pipes, 84 ranks, 65 stops, four manual keyboards of 61 notes, and a pedal keyboard of 32 notes. The pipes range from ¾ inches tall and 3/16 inches in diameter to 32 feet tall and 18 inches in diameter.

Miscellaneous statistics about "the Meyerson": 30,000 square feet of Italian travertine marble; 22,000 pieces of Indiana limestone; 4,535 organ pipes; 2,062 seats; 211 glass panels; 85 foot high ceiling in the concert hall; 50 restrooms; 26 video camera positions within the hall; four private suites for meetings, banquets and recitals; two audio & video broadcast/recording studios.

JUNE AWARDS GALA

*Celebrating the
MPI D/FW TEAM
—Together Everyone
Achieves More—*



*Recognizing and Honoring:
Committee Involvement*

Galleria Gold Recruiting Winners

Suzie Fiveash Winner

Host Facility of the Year

Program of the Year

International Award Nominee

Chapter Planner of the Year

Chapter Supplier of the Year

President's Award

Rising Star

Stars of the Month

Perfect Attendance

Featuring

*Installation of
1999-2000 Board of Directors*

*Third Annual
Presentation of Membership Pins*



MPI

MEETING PROFESSIONALS INTERNATIONAL®
Committed to Educational Leadership

MPI

MEETING PROFESSIONALS INTERNATIONAL®

Committed to Educational Leadership

Symphony of Celebration

TEAM:

*Together Everyone Achieves More
Annual Awards Gala*

Featuring MPI International Chairman Ed Simeone, CMP

June 24

Morton H. Meyerson Symphony Center

2301 Flora Street, Dallas, Texas 75201

214-670-3600

Sponsored by

Las Vegas Convention and Visitor Authority

Hosted by

Morton H. Meyerson Symphony Center

D/FW Audio Visual, Inc.

Culinaire International

Braol Entertainment

Freeman Decorating Company

The Party & Event Designers

Valet Parking Services, Inc.

Results Marketing & Advertising

5:30 p.m. Registration Opens

6:00 p.m. Chapter Orientation—Horchow Room, Lower Level

6:00 p.m. Cocktail Reception & Committee Recognition—Opus Lobby Area

7:00 p.m. Awards Presentation—Hall

7:50 p.m. Dinner, Final Awards & Board Installation—Renaissance Lobby Area

Valet Parking Compliments of Valet Parking Services, Inc.

R.S.V.P. to Randie Charnes

by noon, Tuesday, June 22

Reservations rec'd after the deadline

will be placed on waiting list.

• *FAX 972-506-7485 (see fax insert)*

• *rcharnes@msn.com*

Advance Registration \$32

Guest Registration \$36

Late Registration \$45

JUNE AWARDS GALA

1998-99 MPI D/FW PARTNERS



Every program, every meeting, every event needs the help and sponsorship of our members. Through this support the MPI/DFW Chapter can continue to deliver exceptional programs and educational opportunities. We salute MPI D/FW Partners in Leadership for their support and concern for further advancement in education and networking for MPI D/FW.

Diamond Level Sponsors (\$10,000 +)

DFW Lakes Hilton
Lilands Special Event Productions

Gold Level Sponsors (\$5,000 +)

AVW Audio Visual, Inc.
Culinaire International
Garrett Speakers International, Inc.
LeMeridien Hotel
J&S Audio Visual, Inc.
Renaissance Dallas Hotel North
Southfork Ranch Event/Conference Center
Speedway Club at Texas Motor Speedway

Silver Level Sponsors (\$2,500 +)

Bravol Entertainment
Brookhaven Country Club
Circle R Ranch
Harvey Crowne Plaza Addison
Doubletree Hotel at Lincoln Centre
Howard Eckhart, The Party and Event Designers
ERASE Enterprises
Freeman Decorating Company
Granada Theater Prestonwood
Guest Lodge at the Cooper Aerobics Center
Las Vegas Convention and Visitors Authority
Marriott DFW Airport Hotel
Morton H. Meyerson Symphony Center
PlanSoft
Puerto Rico CVB

Bronze Level Sponsors (\$1,000 +)

Adolphus Hotel
American Airlines
Appointments Professional Advertising
AVHQ/Event Staging/Caribiner International
Balloon City USA
BBJ Linen
Buckskin Corp.
Coach USA/Gray Line DFW/Kerrville Bus
Fun Factory Decorations & Special Events
Jeff Jowdy Photography
Jeffrey Rasco & Company
JH Travel Incentives
Mexican Government Tourism Office

Nightlife Talent and Management Agency
Orlando/Orange County CVB
Radisson Plaza Hotel Fort Worth
San Antonio CVB
St. Petersburg/Clearwater Area CVB.

Chapter Stars

Abby Rents
Adventure Express
Angela Morgan, Mansion on Turtle Creek
Bill Reed Decorations
Bob Bishop
Carey International/Five Star Limousines
Colleen Rickenbacher, CMP, Dallas CVB
Continental Airlines
Dallas Business Committee for the Arts
Dallas Directory, Inc.
Designs Behind the Scene
Dipert Coaches
Ducky Bob's/Cannonball
Encore Productions
Entertainment Alliance
Steven G. Foster, CMP, Circle R Ranch
Wendy Foster, CMP, Circle R Ranch
Fort Worth Convention Center
Fort Worth Convention & Visitors Bureau
Gale Sliger Productions
Ginny's Gifts
Global Audio Visual
Gourmet Dallas
Ken Thornton, Fun Factory Decorations
Melanie Hill, Majesty Hospitality Staffing
Millenium Events
Omni Hotel Dallas Park West
PGI Dallas
Robots 4 Fun
Sheraton Grand DFW
Square One Productions
Star S Productions
Sterling/Summit/Golden TulipHotels/Resorts
SuperShuttle/ExecuCar
Tom Beene, Silver Tray Catering
TRUE COLORS, Inc.
VIP Events, Inc.
WaiterWear

JUNE AWARDS GALA

42 to Receive 'Circle of Commitment' Pins

At the June 24 Awards Gala, the "Circle of Commitment" recognition ceremony will honor 42 MPI D/FW Chapter members who will receive a membership pin commemorating and honoring long-term involvement in the chapter. In this third annual ceremony, pins will be awarded to those who have reached the 5, 10, 25, 20, and 25 year points in MPI membership. Longevity in any area is an accomplishment. In continuing their association with MPI and the D/FW chapter, these individuals provide a continuing legacy.

—20 Years—

Dick Champ
Bruce Jaster
Marilyn McGuire, CMP

—15 Years—

Mary Cowart
Michele Lucia
Kevin McMahan
Eugene Rondeau
Susanne Ruffner, CMP
Colleen Rickenbacher, CMP

—10 Years—

Judy Benaroché, CMP
Bobby Bulger
Deborah Burleson
Clairene Jorella
Debra Lakin, CMP

—5 Years—

Lisa Allen
Barbara Anderson, CMP

Melanie Arguello

Jyll Bishop

Laney Bratton, CMP

Ann Carlton

Kristi Carter

Philip Crouse

Stacey D'Antoni

Delinda Dudley

Rose Duff

Angela Eger

Patricia Gallant

Michael Gongre

Connie Hagston

Tina Ho

Mary Ellen Humphrey

Nikki Jorski, CMP

Lori Mauser

Lucinda Nichols

Michele Oberst

Virginia Paxton

Tamara Quilty

MPI

MEETING PROFESSIONALS INTERNATIONAL®

Committed to Educational Leadership

Awards Nominees

Chapter Planner of the Year

Cheryl Beasley, CMP
Sabre

Tracey Smith, CMP
Computer Language Research

Patti Wilke, CMP
Independent Planner

Chapter Supplier of the Year

Kristi Carter
J & S Audio Visual, Inc.

Michelle Carter, CMP, CHSP
Wyndham Anatole

Betty Garrett, CMP
Garrett Speakers International, Inc.

Rising Star

Randie Charnes
NCR Corporation

Gloria Hernandez, CMP
Holiday Inn Select DFW North

Jennifer Feilke
The Trade Group

Chapter Planner of the Year and Chapter Supplier of the Year awards are presented for lifetime contributions to the chapter in committee and board involvement, meeting industry service, recognition and awards, industry-related speaking engagements and community service. The Rising Star award is presented to a chapter member who has made a significant contribution over the course of the past year and who has been an MPI member for three years or less and has not served on the Board of Directors. Chapter award winners are selected by the Board of Directors and past award recipients.

Nominee for the Marion N. Kershner International Chapter Leader of the Year Award

Colleen A. Rickenbacher, CMP
Dallas CVB

The Marion N. Kershner Chapter Leader of the Year Award recognizes the MPI member who has shown exceptional leadership in the meetings industry. Selected by the International Awards Committee, international honors will be announced at the World Education Conference.

Attention D/FW
CMPs and CMMs!



CMM

CHAMPIONS' BREAKFAST

—the inaugural
CMP, CMM
Recognition Event

Wyndham Anatole Hotel

June 18

8:30-10:30 a.m.

At the Champions' Breakfast, CMPs and CMMs in North Texas (including non-MPI members) will be lauded for their distinguished certification within the Meetings Industry.

Network with colleagues and celebrate your professional endeavors at this special event featuring former Olympic Champion Vincent Poscente as guest speaker.

Expect invitations shortly—and please RSVP quickly to this “must attend” event; seating is limited.

For more information:

- Patty Stern, 214-638-4828
- Dana Nickerson, CMP, 214-343-8067
- Mary Lynn Novelli, CMP, 214-346-1886

1998-99 Planner of the Year

Dana Nickerson, CMP

By Erin Longley • *Imagine Events Inc.*

“You just never know where your volunteer work will take you, both professionally and personally,” says the 1998-99 MPI D/FW Chapter Planner of the Year, Dana Nickerson, CMP (Square One Productions).

It's clear that volunteering is a rich part of Nickerson's life. In addition to all the MPI projects she has been involved in, she actively participates in several Dallas organizations such as the SPCA of Texas, the DMA and the Junior Players. In fact, it was because of her work with the SPCA that she found MPI.



“I had chaired an event, the SPCA Fur Ball, and Mary Lynn Novelli had attended and called me shortly after it was over and asked me if I could help work on a project she was chairing, something called The Kids Ball (although it did not go by that name six years ago),” said Dana. “I co-chaired that event and loved my involvement.”

Dana says that the people she met while working on that project are now good friends, co-workers and partners

with her on other projects.

Education is very important to Dana. Through MPI, she has “learned about leadership, strategic thinking, and teamwork. As an independent planner learning those skills has been helpful in my business. I am really focused on being more of a strategist in my business rather than simply logistics. I see that as the direction of my business,” she said.

Reflecting on her 1998 Planner of the Year Award, Dana says, “It was quite a honor, and quite a surprise. I was in some great company and was very honored. It meant that the hard work we all do as a team in MPI gets recognized.”

She stressed that each project is a team effort and believes that “the entire team gets honored whenever one of us is honored.”

Next year, Dana will serve again on the chapter's Board of Directors as well as work at the MPI International level. She serves on the International Chapter Leadership Committee and is chairing the 1999 Chapter Management Forum in Philadelphia this summer which “gives me a chance to work with other chapters, and help in their growth and development,” says Dana.

The rest of Dana's time will be spent focusing on her new marriage, family and friends. “I believe if you are centered in your life and have a good balance of work and fun, life will be good.”

A Salute to Colleen Rickenbacher, CMP

1998-99 MPI D/FW Chapter President Reflects on Challenges, Crises and Achievements

By Steven G. Foster, CMP
Circle R Ranch

As the final days of her administration come to a close, Colleen Rickenbacher, CMP (Dallas CVB), can reflect on the experience.

The 1998-1999 administrative year has been one of transition for the MPI D/FW Chapter and its president, punctuated with challenges, association crisis and professional achievement.

Her concept of "**TEAM: Together Everyone Achieves More,**" proved to be a call to arms that would be tested many times with unique circumstances and issues throughout the course of the year.

Consider these experiences:

July: Begins her term as MPI D/FW president and represents chapter at MPI WEC in San Diego.

August: Oversees filling a vacancy on her Board of Directors for Vice-President of Membership due to an unexpected resignation.

September: Presides over the contract termination with the former chapter management company and begins the search for an interim replacement.

December: Undergoes foot surgery and sells her home.

January: Still recovering from surgery and on crutches, represents Chapter at MPI PEC in Vancouver.

February: Conducts a mid-year retreat for the Board of Directors and celebrates her fifth wedding anniversary with husband, Steve.

Don't think the balance of her year was a breeze, either. The months between March and June each had its own new surprises.

Through it all, Rickenbacher relied upon her TEAM to overcome all obstacles and ensure MPI D/FW really did achieve more.

"It was definitely challenging, especially so at the start, but I asked for a lot of help and guidance from our board because I felt we needed to face our issues together," said Rickenbacher. "The support was there, even through the stressful times, and I really feel we are now stronger than ever."

MPI D/FW accomplished much under Rickenbacher's guidance. Among the successes she is most proud of are the continued increase in member attendance at chapter functions, the educational content, high evaluation and professional growth of chapter meetings and passing the 800-person mark in chapter membership.

Ironically, it is these same achievements which Rickenbacher believes will continue to challenge MPI D/FW as it moves ahead to the Year 2000.

Moving ahead...

"The new issues will be finding answers to the age old ones—keeping seasoned members challenged and active, building attendance at all educational meetings and growing our membership," she said.

Her advice to chapter members is based on her own experience as an MPI member since 1984: "Get involved and stay committed."

Her own chapter work covers all areas of involvement, including education, public relations, membership, programs, professional growth and government affairs.

Her commitment to community services is reflected in projects like the Love for Kids Christmas Program, The MPI Kids Charity Ball and the Seniors Easter Party.

As an untiring industry advocate, Rickenbacher has served on numerous boards and committees.

Representative of her dedication to professional development and mentoring are two current examples: she serves



Colleen Rickenbacher, CMP
Dallas CVB
MPI D/FW Chapter President

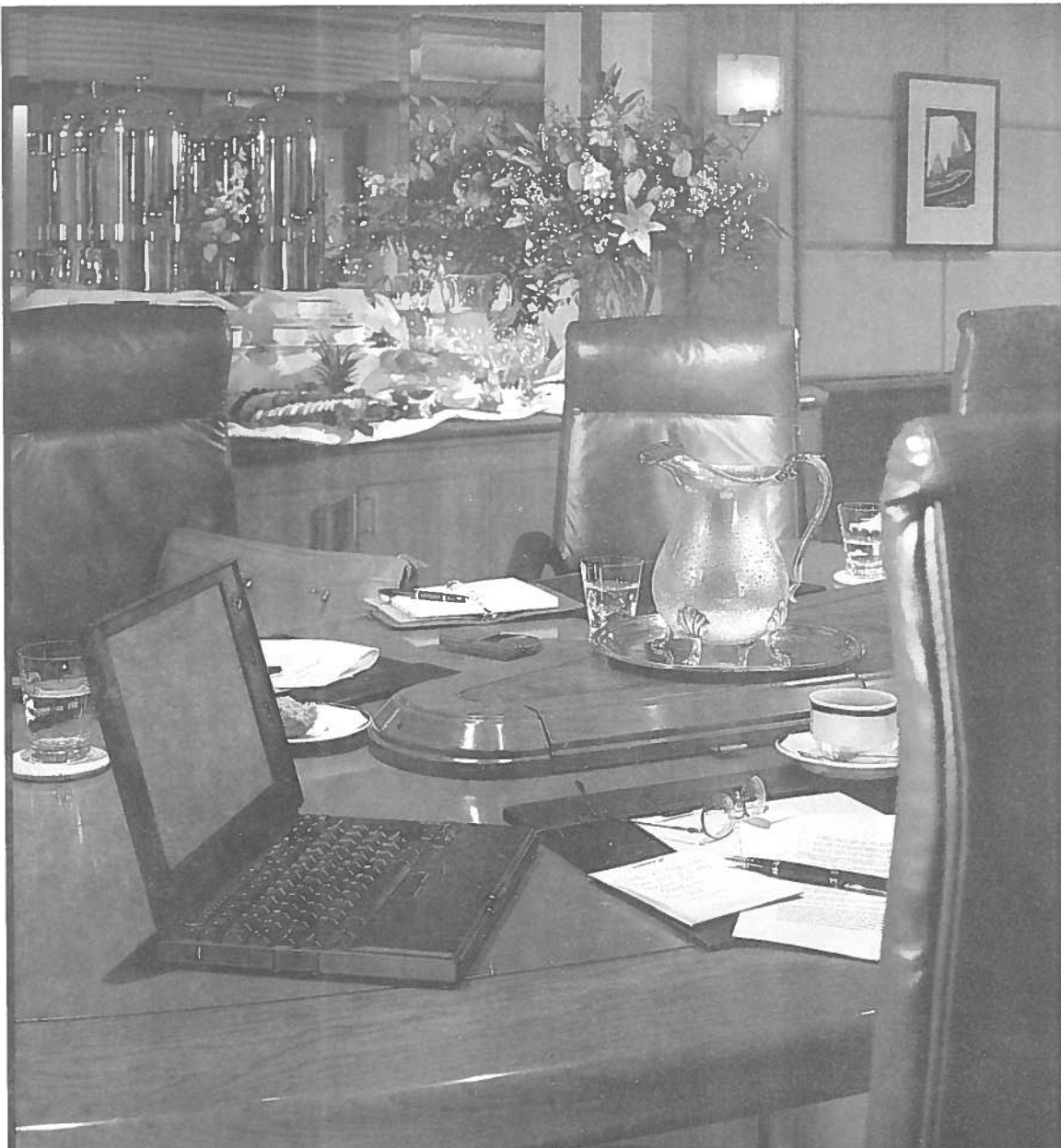
(through 2001) as CMP Chair and continues to support the Richland College Travel, Exposition & Meeting Management Program as Chair of its Scholarship Committee.

In recognition of her industry contributions, Rickenbacher was named the National Speakers Association 1999 Meeting Partner of the Year, and also received a nomination for MPI's Marion N. Kershner Memorial Chapter Leader Award.

"My years with MPI have been the most rewarding and wonderful for career advancement, personal achievements and the best of friendships," said Rickenbacher. "It's been a great year and I am definitely going out on a high note."

In addition to spending more time with her husband next year, Colleen also will be busy planning a wedding. On July 24, her daughter Andrea will marry Dallas event planner Steven Lott.

Even in "retirement," Rickenbacher can still find an event to manage.



We anticipate more than your attendees' need for a great guest room.

Swissôtel Lima and Swissôtel Quito offer luxurious, modern facilities for state-of-the-art meetings. Our professional staff and talented catering group are committed to making your event a success. In an effort to provide you with even better service, we proudly announce the opening of our Global Sales Office in Texas.

For information and reservations, call 214-236-9200.

swissôtel 

A Passion for Perfection™

www.swissotel.com

Amsterdam, The Netherlands

Atlanta, USA

Basel, Switzerland

Beijing, P.R. China

Boston, USA

Brussels, Belgium

Cairo, Egypt

Chicago, USA

Dalian, P.R. China

Düsseldorf, Germany

Geneva, Switzerland

Göcek, Turkey (2001)

Istanbul, Turkey°

Lima, Peru°

Montreux, Switzerland°

New York, USA

Quito, Ecuador°

Seoul, South Korea

Sharm El Sheikh, Egypt (2000)

Washington, DC, USA°

Zurich, Switzerland

° Members of
**The Leading Hotels
of the World**°

Educational Opportunities & Upcoming Industry Meetings at a glance



June 18

CMP/CMM Champions' Breakfast
see page 8 for more information

Monday, June 21

New "CMP Exam Dress Rehearsal"
Monday, 6:00 p.m. – 9:00 p.m.
Place: Harvey Hotel DFW Airport
4545 W. John Carpenter Frwy (Hwy 114)
Fee: \$125, members, for all three sessions
Contact: Dana Nickerson, CMP,
214-343-8067
or Mary Lynn Novelli, CMP
214-346-1886

June 30

Super Session
"Tele & Video Conferencing"
Contact: Jill Heyerdahl,
972-293-1509, fax: 972-293-2774,
E-mail: djem@aol.com

July 11-13

MPI World Education Conference
"The Power of Meetings"
Philadelphia, PA
see page 21 for more information

For more information
about any of these educational
opportunities call
Marti Fox, CTC
(BTI Americas) 214-905-8550

Gemelli and PEC: *Veni Vidi Vici!*



MPI D/FW Chapter members pose with Italian hosts at the statue of Dante in Verona, Italy, during the Third Annual Gemelli Conference.

By Marsha Singer
The Dallas Directory, Inc.

Combining seven-course gastronomic challenges, one-of-a-kind scenic vistas, full immersion into ancient cultural and historical castles, museums and cities, the MPI D/FW Chapter members who traveled to Italy for the Gemelli Seminar and Professional Education Conference-Europe returned with fond memories of challenging educational opportunities, good friends made in Italy and a few more pounds, not just in their suitcases!

The Gemelli Seminar came into being three years ago when the MPI D/FW Chapter partnered with the MPI Italia Chapter. The alliance was christened *Gemelli*, "twins" in Italian,

The journey began in Bellagio, Como on Lake Como. Under the direction of Dr. Rudolph Musco, CMP, CMM. More than 40 meeting professionals from D/FW, Italy and Europe were divided into teams.

The task: to create a comprehensive proposal for an incentive trip for CEOs as well as a full company staff and a full conference program using specific criteria and budget.

The time: 2½ days preparation culminating in a full presentation to more than 75 regional chamber of commerce and tourism bureau leaders, hotel owners, managers, and other industry professionals from Italy.

The conference ended but the celebration continued with a lavish dinner at the world famous Villa de Este. Next: Verona, Venice, Ravenna and, finally, Rimini, site of the 1999 PEC-Europe Conference.

The theme: "Composing the Conference Concerto; striking an adult educational chord." More than 400 MPI members from all over the world enjoyed tours of the area, stimulating educational sessions and seminars and nightly receptions of wine and food in ancient villas, independent countries and hilltop discos.

The MPI Kids Charity Ball 1999



Bruce Wolpert, CMP (Hilton Sales Worldwide), right, picked this year's raffle winner, **Mark Logar**.



Joe Diaz (Delta Air Lines), **Ann Adams** (Worldspan)



Randy Parker (Fairmont), **Cheryl Beasley, CMP** (Sabre)

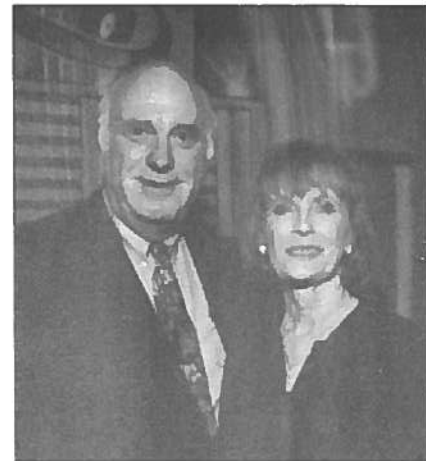


LEFT: The MPI Kids Charity Ball 1999 Committee: **M & ResortsWayne Wallgren**, (Global Enterprises Int'l) **Esther Wigley** (Appointments), **C.W. Kendall**, (Ken-R (Wholesale Distributors Assn.), **Gregory Pynes**, (Han Communications), **Carol Mozingo** (Sabre), **Vicki Kotz**, **Cheryl Beasley, CMP** (Sabre)

Photos by V



Pat McCain, CMP (Krisam Group), **Gregory Pynes** (Hand & Associates Marketing Communications), **Micheale Craddock, CMP** (Sprint)



Mr. and Mrs. C.W. Kendall (Ken-Ran Entertainment)

*Photos
by
VISTA*



Wayne and Gerry Garcia



Ann Novelli, CMP (Sterling Hotels
for Feilke, (The Trade Group)
ertainment), **Gina Bollinger**,
sociates Marketing
holesale Distributors Assn.), and



Marsha Singer (The Dallas Directory, Inc.) and
Dana Nickerson, CMP (Square One Productions)

TA



le Wallgren, aka Mr. and Mrs.
al Enterprises Int'l)



Tara Judd (Imagine Events), **Percy Sales** (Houghton
Mifflin), **Beverly Sumabat** (Houghton Mifflin), **Erin
Longley** (Imagine Events)



The MPI Kids Charity Ball

Produced by Meeting Professionals International
Dallas Fort Worth Chapter

1999 SPONSORS

**Guardian Angel
Sabre**

Diamond Sponsor



Platinum Sponsors

Fairmont Hotel
IGNITION! Creative Group

Gold Sponsor

Bill & Angela Barsrett
Kimberly Clark Corporation
Fun Factory Decorations & Special Events
Love for Kids

Silver Sponsors

AVW Audio Visual
Continental Airlines
Hilton Sales Worldwide
Krisam Hotels & Resorts
The M/A/R/C Group
Starwood Hotels and Resorts
Sterling Hotels and Resorts

Bronze Sponsors

Alitalia
Addison Conference & Theatre Center
Alcon Consumer Products Division
American Airlines Training & Conf. Center
Circle R Ranch
Culinaire International
Delta Air Lines
Event Source Professionals
Gerry Ridgely, Jr.
Global Enterprises International
Ken-Ran Entertainment
Le Meridian
Lucent Technologies
Renaissance Meetings and Incentives
Steve Kemble Event Design
Sun Belt Motivation and Travel
Tom Thumb

The MPI Kids Charity Ball
neglected to recognize our good
friends at

Delta Air Lines

for donating two roundtrip tickets
to Costa Rica for the live auction
package. Their continued support
is truly appreciated.

May Meeting Highlights

'Race to the Finish'—Reed Discusses Teamwork at The Speedway Club, Texas Motor Speedway

The May 27 chapter meeting was held at The Speedway Club, a brand-new facility at the Texas Motor Speedway in Fort Worth. The newest sports venue in the metroplex, the Texas Motor Speedway hosts the hottest sports ticket in town—NASCAR Racing. This 154,861-seat race track is the second-largest sports facility in the U.S. (behind the Indianapolis Motor Speedway).



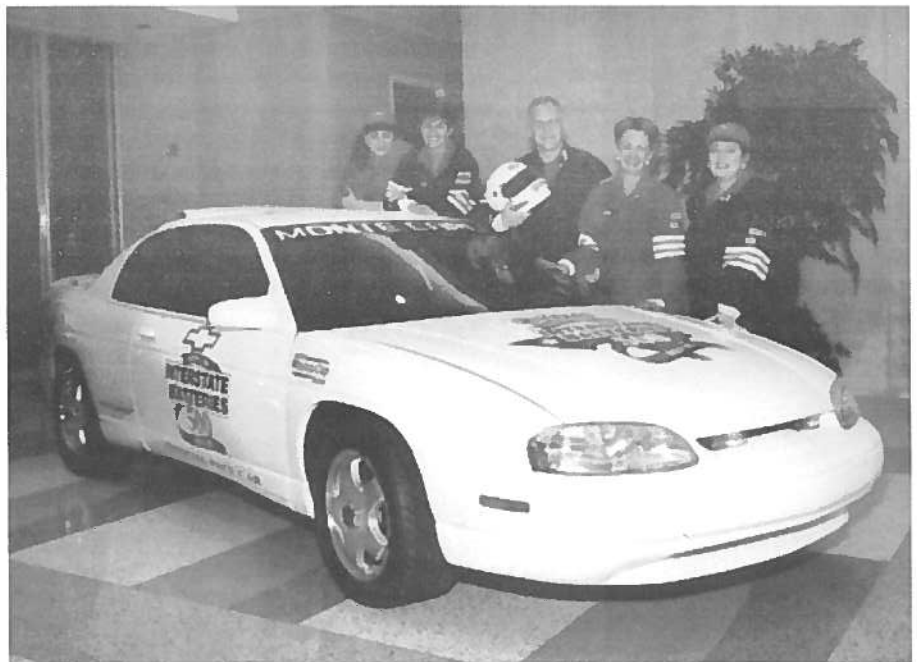
Hosts from The Speedway Club at the Texas Motor Speedway were **Bernard van Maurik**, general manager; and **Andy Osborne**, assistant general manager and director of special events.

Dallas-based consultant **Kathy Reed** presented her TeamWorks workshop, providing training and problem-solving advice for teams in action. Reed, who has 15 years of team leadership experience with companies including Xerox Corp. and Compaq Computer Corp., has launched 13 hardware and software product lines through program teams. A graduate of the University of Texas at Austin, she is a member of the American Society of Training and Development, and the National Speakers Association.



*Photos
by
VISTA*

Getting revved up for activities at Texas Motor Speedway were MPI D/FW members **Peg Wolschon** (Coach USA), **Colleen Rickenbacher, CMP** (Dallas CVB), **Steven G. Foster, CMP** (Circle R Ranch), **Betty E. Garrett** (Garrett Speakers International, Inc.) and **Dana Nickerson, CMP** (Square One Productions).



The St. Petersburg/Clearwater Area Convention & Visitors Bureau showcased its unique destinations in a special trade show during the reception hour.



Hall of Fame

Please salute the following companies and individuals for their contributions to the May meeting at The Speedway Club, Texas Motor Speedway.

Featured Speaker

KATHY REED, TEAMWORKS

Facility, Reception, Dinner & NASCAR Networking Event
THE SPEEDWAY CLUB AT TEXAS MOTOR SPEEDWAY

BERNARD VAN MAURIK
General Manager

ANDY OSBORNE
Assistant General Manager &
Director of Special Events

Destination Trade Show and Prize Drawing
ST. PETERSBURG/
CLEARWATER AREA CVB
ANDY BERGERON
Director of Meetings & Conventions
TERE MIYARES
Sales Manager, Meetings & Conventions

Audio-Visual Support
J&S AUDIO VISUAL, INC.
JEANIE RENNER
General Manager, Tarrant County

Balloon Decor
EDDIE HEYLAND, BALLOON CITY

Motorcoach Transportation
ADVENTURE EXPRESS

May Program Committee
STEVEN G. FOSTER, CMP
Circle R Ranch

DANA NICKERSON, CMP
Square One Productions

O.D. O'DONNELL
Nightlife Talent & Management Agency

ESTHER WIGLEY, CAS
Appointments Professional Advertising

Photos by VISTA



We anticipate more than your attendees' need for a great guest room.

Swissôtel Lima and Swissôtel Quito offer luxurious, modern facilities for state-of-the-art meetings. Our professional staff and talented catering group are committed to making your event a success. In an effort to provide you with even better service, we proudly announce the opening of our Global Sales Office in Texas.

For information and reservations, call 214-236-9200.



A Passion for Perfection™

www.swissotel.com

Amsterdam, The Netherlands

Atlanta, USA

Basel, Switzerland

Beijing, PR China

Boston, USA

Brussels, Belgium

Cairo, Egypt

Chicago, USA

Dalian, PR China

Dusseldorf, Germany

Geneva, Switzerland

Göcek, Turkey (2001)

Istanbul, Turkey°

Lima, Peru°

Montreux, Switzerland°

New York, USA

Quito, Ecuador°

Seoul, South Korea

Sharm El Sheikh, Egypt (2000)

Washington, DC, USA°

Zurich, Switzerland

° Members of
**The Leading Hotels
of the World**

**MPI D/FW
Mailing List and
Labels For Sale**

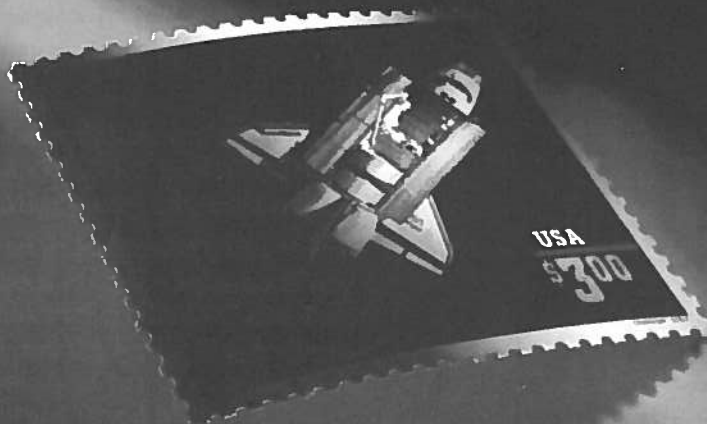


The MPI D/FW mailing list, which consists of approximately 820 meetings professionals, can be purchased in ready-to-mail label format. The list, which is updated monthly, is sorted alphabetically, or by planner or supplier categories.

The cost is \$150 for MPI D/FW members; \$250 for members of other MPI Chapters; and \$300 for non-members.

To order, contact Randie Charnes, 972-506-7485 or rcharnes@msn.com

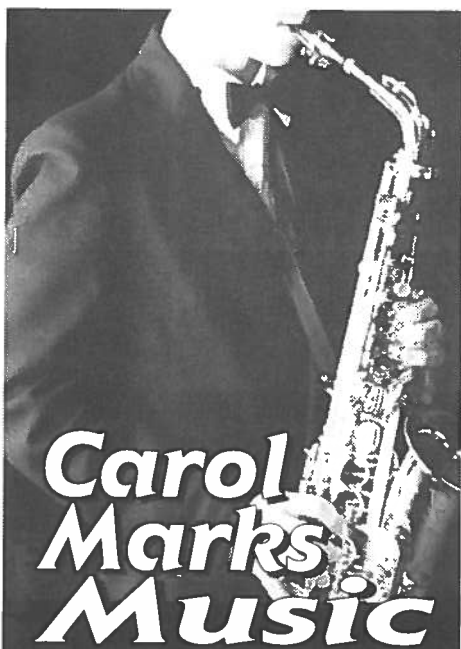
Our post office is the same as yours.
Except our mail carriers wear shorts all year long.



Welcome to the New World

800-875-4765

www.discoverpuertorico.com



**Carol
Marks
Music**
& Entertainment Agency

We book bands committed to delivering outstanding professional performances for corporate & private engagements!



615 Business Pkwy • Richardson, TX 75081

972-231-4091

carolmarksmusic.com



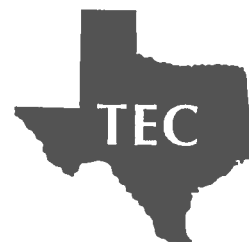
**SMART
CARD**

*The Educational
Pass to Learning*

The \$75 SMART CARD admits MPI D/FW members to all educational events.

For more information, call
Lianne Pereira
972-855-1676

Third Annual
**Texas
Education
Conference**



November 5-6
Renaissance Austin Hotel

MPI Hill Country
MPI Houston Area
MPI D/FW

**TRAVELING CAN BE
EXCITING, SOMETIMES
REALLY EXCITING!**



ERASE Enterprises provides safety and security consultation, planning, and personal protection services for executives, celebrities, dignitaries and their families. ERASE security agents are cross-trained with backgrounds in law enforcement, personal protective services, fire fighting and emergency medical services. With the increase of concerns for terrorist activities, street crimes and natural disasters, it is imperative that your executives are protected when traveling. When planning your next executive incentive trip or hosting a VIP at one of your meetings, call ERASE to discuss your security needs.

ERASE
1-800-372-7330

ERASE Enterprises is a MPI member organization

WEC/Philadelphia
continued from page 21

vous for a Reason is sponsored by Sonesta Hotels, Resorts & Nile Cruises for the seventh consecutive year.

The Second General Session, July 13, focuses on The Experience Economy - the idea of participants actually *experiencing* an event; one that captures minds and hearts. This highly engaging general session attempts to do what powerful meetings in the 21st century will do - capture your imagination and provide lasting value.

The Final Night Networking Reception, Dinner & Entertainment, on July 13, begins with cocktails at the Grand Hall of the Pennsylvania Convention Center. After the reception, dinner is to be served in the Philadelphia Marriott's Grand Ballroom. The Bacon Brothers - Actor Kevin and brother, Michael, who are Philadelphia natives, are scheduled to perform followed by the Fabulous Greaseband. Final Night activities are sponsored by the Philadelphia Marriott.

WEC features two community service projects: *Reach Out and Read*, a pediatric program to support emergent literacy, and Philadelphia Green Project, the revitalization of a neighborhood playground.

MPI hosts its fourth annual Charity Golf Tournament on July 14, benefiting the MPI Foundation and the Multicultural Affairs Congress of the Philadelphia Convention & Visitors Bureau Scholarship Program.

**Jan Pollard Award
for Professional Growth**



Having a problem funding the WEC or another important professional education event? Apply for MPI D/FW's Jan Pollard Award for Professional Growth.

When longtime MPI D/FW Chapter contributor and previous board member Jan Pollard died in February 1998, MPI D/FW renamed the Professional Growth Award program—benefiting ongoing professional educational needs of chapter members—the Jan Pollard Award for Professional Growth.

To participate on the JPA committee, apply for scholarship funds, or donate prizes for monthly drawings, contact Gail Lemaire (Hotel Inter•Continental Dallas), 972-789-3037.



M.T. Hickman
Richland College
'Grapevine' Columnist

Heard it through the Grapevine!



Mitchell Cathey
Texas De Brazil Grill House
'Grapevine' Columnist

Joe Bledsoe has returned to Dallas from Austin to accept the position of director of sales, *Le Meridien Hotel*.

Deborah Burleson accepted the position of sales manager, *Wyndham Anatole Hotel*. This change comes after 10 years at the *Westin Galleria Dallas*.

Lanay Fournier-Stokes, program manager of events, *Sprint*, is a new mom. Rachael Shay was born April 27.

Sue Fry has accepted the position of vice president of special events, *Destinations Dynamics Dallas Inc.* Her former position was sales manager, *Pomodoro Arocodoro Restaurant*.

Tracey B. Smith, CMP, was promoted from marketing program manager to manager,

events programming, *Research Institute of America (RIA)*.

Anna Squire, *ClubCorp of America*, was promoted from catering director at Hackberry Creek Country Club in Irving to catering director at Stonebriar Country Club in Frisco. The timing of this promotion is great, as Anna and her husband just purchased a new home in Plano.

Ann Stetson, *Le Meridien Hotel*, was promoted from sales manager-national accounts to senior national sales manager.

Congratulations to **Dana Nickerson, CMP**, *Square One Productions*, for completing the Leadership Arts Program with the Dallas Business Committee for the Arts.

Congratulations to the *Dallas Chapter of Hospitality Sales and Marketing Association International* for winning two "Best of the Best" Awards at the International Convention for HSMIA. The Dallas chapter received "Best Newsletter" for the second consecutive year and was awarded with honors in the category of "Awards and Recognition".

To submit items for this column contact

M.T. Hickman
(Richland College)
972-238-6097; fax 972-238-6333, or
mthickman@dcccd.edu; or
Mitchell Cathey
(Texas De Brazil Grill House),
972-385-1000; fax 972-385-1009.

Don't Rough It. Plan your next meeting with us.



Double Diamond Golf Resorts & Conference Centers

Wouldn't you rather be surrounded by golf courses and lake views instead of skyscrapers and highways? Let Double Diamond Golf Resorts and Conference Centers take you out of the rough and on to the green.

- ◆ Conference centers
- ◆ Spacious guestrooms and condominiums
- ◆ Championship golf courses
- ◆ Outstanding dining
- ◆ 19th Hole Grills and Pro Shops
- ◆ Full service marinas
- ◆ Fitness centers
- ◆ Pools
- ◆ Tennis courts

White Bluff
ON LAKE WHITNEY

www.whitebluff.com

THE CLIFFS
ON POSSUM KINGDOM

www.thecliffs.com

Call Group Sales for information on Corporate Meeting Packages at 1-800-324-7438 ext. 9805 or 9806.

www.mpidfw.org

Chapter Website Expected to be Online by Early August

By Tony Cummins
Adam's Mark Hotel Dallas
Chair, MPI D/FW Website Committee

The MPI D/FW Chapter Web Site Development Committee has been working behind the scenes to design and build the chapter's future web site, <http://www.mpidfw.org>.

Assisting with the project are Corbin Ball, CMP and his business partners, Jeffrey Rasco, CMP and Rod Marymore, CMP, of California-based Cardinal Communications.

All three are active MPI members who have been honored in recent years as "International MPI Chapter Leaders of the Year."

The website, expected to be online by early August, will provide •General Chapter Information, a •Membership Directory, •Chapter News and Events, •Online Registration for monthly meetings and education programs, and a •Job Bank which will allow jobs and resumes to be posted online.

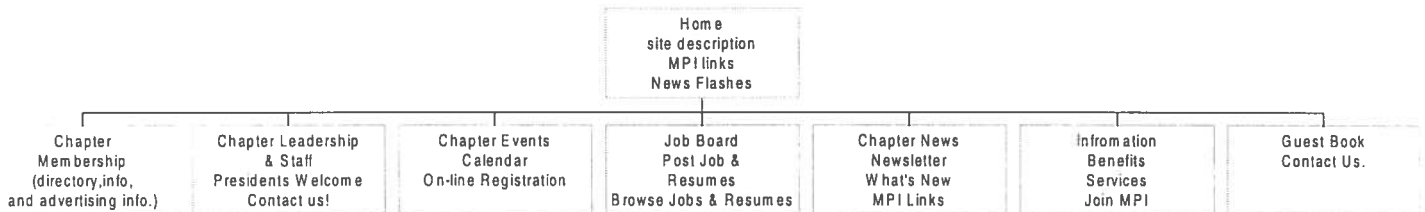
See site map below.

Chapter Website Offers New Advertising Opportunities

The new site will feature numerous advertising opportunities for chapter members to promote their products and services.

Full-color banner ads will display your company name and logo at the top of the page and will provide a Hot Link to your company web site. Enhanced directory listings will bring your name to the top of the list when a supplier category is chosen and will also feature a 25-word bio of your company's product or service.

For more information about how you can be one of the first to advertise on the site, contact Advertising Chair Gregory Pynes (Hand & Associates Marketing Communications), 214-770-1609.



WORDS ALONE *are not enough.*

*As a proud sponsor of this and many other worthwhile causes,
Sprint would like to salute those people and companies who answered
the call for help and made this event possible.*



1999 WORLD EDUCATION CONGRESS



PHILADELPHIA, PENNSYLVANIA
JULY 11-13, 1999

*the industry's most
comprehensive
adult education
experience*

More than 90 Forums
and Workshops

Cutting-Edge
General Sessions

Technology Laboratory

MeetingPlace '99

Unique Networking Events

MPI

MEETING PROFESSIONALS INTERNATIONAL®
Committed to Educational Leadership

International Headquarters
4455 LBJ Freeway • Suite 1200
Dallas, Texas 75244-5903 USA
Tel: 1.972.702.3000
Fax: 1.972.702.3070

World Wide Web Site
<http://www.mpiweb.org>

For registration materials call
1.972.702.3051 or visit MPIWeb

MPI'S 1999 WEC Focuses on 'The Power of Meetings'

Ray Pelletier, CSP, CPAE, will headline the Opening General Session of Meeting Professionals International's (MPI) 1999 World Education Congress, entitled *the power of meetings*, July 11-13 in Philadelphia, Pennsylvania.

Pelletier, during his keynote presentation entitled "Changes, Challenges and Choices," shares information from his definitive research on attitude and team development. Pelletier explains why change is both positive and necessary as well as how to ensure it happens.

Pelletier, whose appearance is sponsored by Wyndham Hotels & Resorts, authored the best seller *Permission to Win* and speaks internationally on a variety of subjects. He is founder and president of The Pelletier Group.

Also during the Opening General Session, MPI presents the 1999 Meeting Professional Awards, sponsored by Southwest Airlines. MPI and its International Awards Committee bestow honors for Planner and Supplier of the Year, the *Marion N. Kershner Memorial Chapter Leader* and *Tomorrow's Leaders of MPI*.

Ed Simeone, CMP, 1999-2000 International Chairman assumes leadership of MPI from 1998-99 International Chairman Bob Moore during a ceremonial "Passing of the Gavel."

Entertainment at the Opening General Session features Kim Perry and Steve Templeton, of The Carolina Opry, sponsored by Myrtle Beach Convention Bureau and The Carolina Opry.

MPI Forums are slated for introduction at the 1999 World Education Congress (WEC).

Congress registrants can select from a total of 90 forums and workshops offered during the 1999 WEC.

A Technology Laboratory, sponsored by Starwood Hotels & Resorts Worldwide, Inc., is scheduled in addition to Hot Topic Events, which include "Y2K Impact," "Intensive Internet" and "Career-

Path."

For the first time, MPI intends to offer suggested career paths of workshops and forums for both planners and suppliers, including independent, corporate, association and advanced. Each Member Group will find options from meeting management, business development, professional development and technology. Global issues will be addressed in each option.

"We have made some very exciting changes to this year's congress to empower you in all aspects of your life - both professional and personal. We won't just teach you new skills, but will facilitate a process allowing you and your colleagues to explore the issues and challenges which are most important to you now, as well as strategize for the future," said Kimberly Meyer, MPI Director of Education.

On Sunday evening, the Philadelphia Museum of Art serves as backdrop for the Opening Night Networking Reception, sponsored by Commonwealth of Pennsylvania, Restaurant Associates, Philadelphia Museum of Art and Philadelphia Convention & Visitor's Bureau.

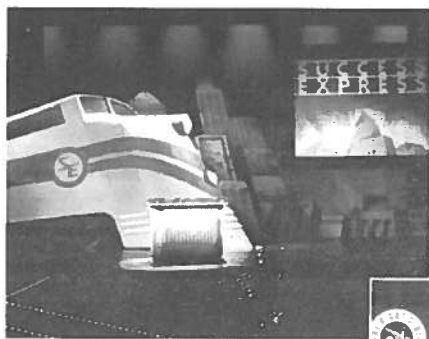
MeetingPlace '99 takes place on July 12 in the Pennsylvania Convention Center. Attendees can preview new products and services designed specifically to enhance meetings, conferences and events as well as examine cities, convention centers, resorts and hotel properties for upcoming meetings and events.

Attendees also have the opportunity to *Rendezvous for a Reason* on July 12. This MPI Foundation fund-raiser features live music from RCA recording group, The Andy Childs Band, at one of Philadelphia's great networking venues, the Egypt Night Club.

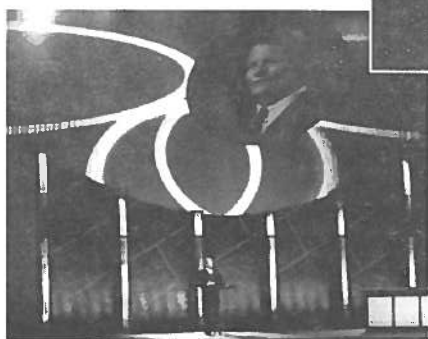
The MPI Foundation develops and funds innovative publications, industry research and programs that prepare meeting professionals for the future. *Rendez-*

continued on page 18

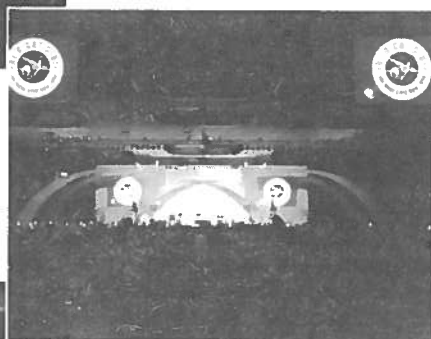
Have you been introduced to J&S Show Services?



**Equipment Rental,
Equipment Sales & Installation,
In-House Operations,
Show Services**



J&S Audio Visual, Inc. is a full service company committed to attention to detail, customized options, and lasting partnerships. Based here in the DFW metroplex, we provide audio visual services internationally.



Please call us to see how we might be able to assist with your next meeting or event.

J&S Corporate Headquarters:
3373 Towerwood Drive
Dallas, TX 75234-2316
(972) 241-5444 / phone
(972) 247-2590 / fax
(800) 852-8771 / toll free
info@jsav.com / e-mail



Your Partner In Success

Our mission. We provide the technology, specialists, and personalized service that allow our clients to effectively communicate via conferences, meetings, and events while maintaining lasting relationships.

Please visit our booth at the MPI World Education Conference tradeshow on July 12, 1999 in Philadelphia. You are also invited to enjoy cocktails and hors d'oeuvres at our hospitality suite at the Marriott, which will be open evenings before and after MPI scheduled events throughout the conference.

Tidbits from the Top

News from MPI International

PEC Europe Reports Record Attendance

More than 300 people attended the 1999 Professional Education Conference-Europe, April 18-20, in Rimini, Italy.

The conclave featured three general sessions, 18 workshops, a Chapter Management Forum and trade show, as well as unique networking events.

The PEC Europe 2000 is scheduled for Amsterdam on April 9-11, 2000.

Institutes I & II Return to Florida

Institutes I & II will be held October 24-29, 1999 at the Bay Point Resort Village Marriott Golf & Yacht Club in Panama City Beach, Florida.

These two customized, integrated certifi-

cate programs in meeting management are designed as four-day residential immersion courses.

The program will be offered only once in 1999. For more information, call 972.702.3067.

98-99 Presidents Honor Roll Nears Conclusion

The 1998-99 President's Honor Roll Campaign officially concludes on June 30, 1999.

A record number of MPI members are participating in this year's "Building Bonanza" with some 4,628 new members already enrolled through the end of April.

New member sponsors receive rewards for their efforts and the top recruiters are

eligible for trips to Barcelona, Montreal and Nashville.

For more information call the Marketing Department at 972.702.3050.

Philadelphia is Site of 1999 WEC

The 1999 World Education Congress will be July 11-13 in Philadelphia, Pennsylvania. The 1999 WEC will feature two general sessions, more than 80 workshops and forums, Meeting Place '99, a technology laboratory and unique networking events.

For more information call 972.702.3030 or visit MPIWEB.



—Submitted by
Michelle Carter, CMP, CHSP
(Wynndham Anatole)
MPI DFW International Marketing Liaison

**\$2.5 MILLION
ROOM
RENOVATION**

Not Your Basic Meeting Facility.

There's nothing like meeting at the Lake of the Ozarks – for the sheer beauty alone.

The Lodge of Four Seasons is a unique yet practical choice for large or small meetings – offering newly renovated rooms, award-winning restaurants and a wide array of lake activities – with meeting facilities that will exceed most planners' expectations.

The Lodge also offers two championship golf courses – one designed by the legendary Robert Trent Jones, Sr.

So plan to meet at The Lodge of Four Seasons. Where it's everything but ordinary.



**THE
LODGE
OF FOUR SEASONS**
EVERYTHING BUT ORDINARY

State Road HH, Lake Ozark, MO 65049

1-800-711-8983
www.4seasonsresort.com

Call
For Our NEW
MEETING PLANNER KIT
or visit us at www.plansoft.com

MPI

MEETING PROFESSIONALS INTERNATIONAL®

Committed to Educational Leadership

Dallas/Fort Worth Chapter
7750 North MacArthur Blvd.
Suite #120-259
Irving, TX 75063

FIRST-CLASS MAIL
U.S. POSTAGE
PAID
DALLAS, TX
PERMIT NO. 1930



*Window of
Opportunity*



*Look Into
Del Lago*



- 60,000 Square Feet of Flexible Meeting & Function Space
- 310-Room All-Suite Tower
- 35 Two-Bedroom Golf Cottages
- 12 Lakeside Villas
- 18-Hole Championship Golf Course

- Full Service Marina on 22,000-acre Lake Conroe
- Fresh Water Beach
- Health Spa & Fitness Center
- Just 45 Minutes from Houston's George Bush Intercontinental Airport

Your vision is our quest
 **DEL LAGO™**
America's Premier Waterfront Conference Center & Resort

877-348-1542 • www.dellago.com
600 Del Lago Blvd. • Montgomery, Texas 77356-5349

**MPI DALLAS/FORT WORTH CHAPTER
APRIL 1999 NEW MEMBERS**

Stephanie M. Albers **PO⁴D 5**
The Entertainment Collaborative
2546 Elm St. #200
Dallas, TX 75226
214/747-9663 (phone) & 214/939-9663(fax)
e-mail addr: salbers@theec.com

Sharon N. Andersen **PO⁴D 4**
i2 Technologies
909 E. Las Colinas Blvd.
Irving, TX 75039
214/860-6494 (phone) & 972/401-4706 (fax)
e-mail addr: sharon_andersen@i2.co

Sonya L. Apodaca **PO⁴D 2**
Society of Petroleum Engineers
222 Palisades Creek Dr
Richardson, TX 75080-209
972/952-9319 (phone) & 972/952-9435 (fax)
e-mail addr: sapodaca@spelink.spe.org

Mier C. Brown **PO⁴D 2**
Harvey Hotel/Holiday Inn Plano
1600 N Central Expwy
Plano, TX 75074
972/578-8555 (phone) & 972/578-9720 (fax)

Bryan Fox **PO⁴D 3**
Lee Michaels
5580 LBJ Freeway #200
Dallas, TX 75240
972/385-7586 (phone) & 972/233-3817 (fax)
e-mail addr: leemichl@airmail.net

Camille Gilmore **PO⁴D 7**
Embassy Suites Park Central
13131 N Central Expwy
Dallas, TX 75243
972/234-3300 (phone) & 972/437-9863 (fax)
e-mail addr: embassy@airmail.net

Dorinda Graves **PO⁴D 5**
Jenkins & Gilchrist
1445 Ross Ave #3200
Dallas, TX 75202-279
214/855-4653 (phone) & 214/855-4300 (fax)
e-mail addr: dgraves@jenkens.com

Lauren M. Hammond **PO⁴D 8**
Dallas Marriott Suites Market Center
2493 N Stemmons Fwy
Dallas, TX 75207
214/589-6112 (phone) & 214/589-6193 (fax)

Pennilynn Hanson **PO⁴D 4**
Wyndham Garden Hotel Las Colinas
110 W Carpenter Frwy
Irving, TX 75039
972/650-5917 (phone) & 972/650-5920 (fax)

Marquelon Ingram **PO⁴D 7**
Resource Southwest
204 Toler Dr
Mesquite, TX 75149
972/392-9999 (phone)
e-mail addr: marquelon@aol.com

Adam G. Keim **PO⁴D 5**
Andersen Consulting
901 Main St #5400
Dallas, TX 75202
214/853-1733 (phone) & 214/462-5437 (fax)
e-mail addr: adam.g.keim@ac.com

Lisa T. Lambrecht
Wyndham Grand Heritage Hotel
300 E Travis
San Antonio, TX 78205
210/354-9221 (phone) & 210/222-1896 (fax)

R. Mark Lee **PO⁴D 6**
Audio Visual Headquarters
10540 N Stemmons Frwy
Dallas, TX 75220
214/210-8081 (phone) & 214/210-8164 (fax)
e-mail addr: mlee@avhq.com

Gina L. Maciag **PO⁴D 3**
Texas Society of CPA's
14860 Montfort Dr #150
Dallas, TX 75240
972/687-8663 (phone) & 972/687-8696 (fax)
e-mail addr: gmaciag@tscpa.net

**MPI DALLAS/FORT WORTH CHAPTER
APRIL 1999 NEW MEMBERS**

Sharon L. Moore **PO⁴D 9**
Arlington Convention Center
1200 Ballpark Way
Arlington, TX 76011
817/459-5000 (phone) & 817/459-5089 (fax)

Mechille Vera Cruz
Tour 18 Golf Course
8718 Amen Corner
Flower Mound, TX 75022
817/430-2000 (Phone) & 817/430-2007 (Fax)

Christine W. Morrison **PO⁴D 1**
Susan G. Komen Breast Cancer Foundation
5005 LBJ Frwy #250
Dallas, TX 75244
972/855-1613 (phone) & 972/855-4301 (fax)
e-mail addr: cmorrison @komen.org

Leslie P. Wells **PO⁴D 5**
Melrose Hotel
3015 Oaklawn Ave
Dallas, TX 75219
214/521-5151 (Phone) & 214/521-9306 (fax)
e-mail addr: lpaigew@yahoo.com

Theresa M. Ramsey
Sheraton Austin Hotel
500 N IH 35
Austin, TX 78701
512/480-8181 (phone) & 512/480-8633 (fax)

Christina F. Rasco **PO⁴D 10**
Student
2450 Oak Hill Cir #2313
Fort Worth, TX 76109
817/257-4427 (phone) & 817/921-9866
e-mail addr: cfrasco@student.tcu.edu

Sharon A. Richardson **PO⁴D 5**
Adams Mark Dallas
400 N Olive
Dallas, TX 75201
972/922-8000 (phone) & 972/922-0308 (fax)

Wendi E. Schaffner **PO⁴D 9**
Hyatt Regency DFW
International Parkway
Dallas, TX 75261
972/615-6880 (phone) & 972/615-6825 (fax)
e-mail addr: wschaffn@dewappo.hyatt.att.com

Melissa A. Swift **PO⁴D 5**
Carlson Wagonlit XTS
301 N Market St #150
Dallas, TX 75202
214/915-9300 (phone) 214/915-9009 (fax)
e-mail addr: mswift@xtstravel.com