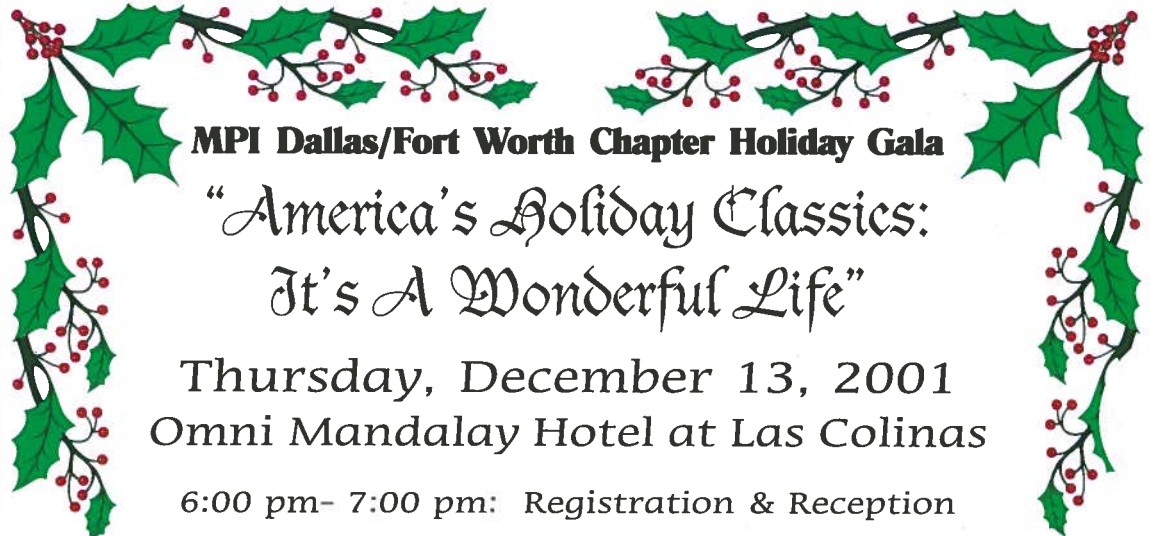


Chapter of the Year  
1989 ★ 1990 ★ 1994 ★ 1996

## Inside

President's Message.....	2
Current Affairs.....	3
Chapter Meeting.....	5
Education.....	7
Kids Charity Ball.....	8
Tech Talk .....	10
Membership.....	11
President's Award.....	13
Dear CMP.....	14
Grapevine.....	14
November Meeting.....	15
Chapter Calendar.....	16

For more detailed  
**Information**  
Log on to our  
**WEBSITE**  
[www.mpidfw.org](http://www.mpidfw.org)



### MPI Dallas/Fort Worth Chapter Holiday Gala

*"America's Holiday Classics:  
It's A Wonderful Life"*

Thursday, December 13, 2001  
Omni Mandalay Hotel at Las Colinas

6:00 pm- 7:00 pm: Registration & Reception  
7:00 pm - 8:30 pm: Dinner and Holiday Program  
8:45 pm - 10:30 pm: Dancing

sponsored by



MPI D/FW President Betty Garrett, CMP, VP of Programs Anna Squire, members of the program committee and the staff of the Omni Mandalay Hotel are your hosts to this year's Holiday Gala.



DEFINING THE POWER OF MEETINGS™

Meeting Professionals International is the world's largest association of meetings professionals with more than 18,000 members in 64 countries and 58 chapters and six clubs. MPI serves as the pivotal force in positioning meetings as a primary communication vehicle and a critical component of an organization's success. MPI leads the meeting industry by serving the diverse needs of members and non-members alike through its commitment to quality education, continuous improvement and excellence in meetings while upholding high ethical standards.

**President**

Betty E. Garrett, CMP  
Garrett Speakers International, Inc.  
972-513-0054

**President-Elect**

Cheryl L. Beasley, CMP  
Sabre Inc.  
817-931-7923

**Immediate Past President**

Steve W. Kemble  
Steve Kemble Event Design  
214-943-5949

**Vice President of Education**

Patty Stern Markley, CMP  
Dallas Meeting Management, Inc.  
972-233-8524

**Vice President of Finance**

Melissa S. Logar, CMP  
PricewaterhouseCoopers LLP  
972-724-2258

**Vice President of Membership**

Elizabeth S. Chandler  
The Meadows Foundation  
214-826-9431

**Vice President of Programs**

Anna Squire  
Independent  
972-712-8606

**Vice President of PR/Marketing**

Beverly D. O'Laughlin, CMP  
Beverly O'Laughlin & Associates  
972-985-1676

**BOARD OF DIRECTORS**

**Director of Administration**

Nicole Northrop, CMP  
Omni Mandalay  
972-869-5527

**Director of Finance**

Wendy Foster, CMP  
Circle R Ranch  
817-430-1561

**Director of Programs**

Erin Longley, CMP  
Imagine Events  
972-758-9355

**Director of Website**

Debbie Meyers, CSEP  
BRAVO! Entertainment  
972-939-2525

**Sherry DeLaGarza, CMP**

Dallas HR Management Assoc.  
214-631-8775

**Dvorah A. Evans, CMP**

Dallas Black Chamber of Commerce  
214-421-5200

**Tamra S. Hughston, CMP**

The Meeting Planners  
972-691-1335

**Sandi Galloway**

Canadian Tourism Commission  
940-321-3458

# A Message from the President



DALLAS/FORT WORTH CHAPTER



Betty E. Garrett, CMP  
Garrett Speakers International  
Chapter President

As we approach this holiday season, we have countless blessings...our family, friends, strategic partners and one another. The chapter is blessed to have YOU as its member, working together for a common cause. Two years ago this chapter was celebrating the 800th member, and now with our improved retention rate, we are 950+ strong.

Anne Bruce gave us a road map on how to hire, motivate and retain our superstars. It is our responsibility as leaders to provide lifelong learning environments. We must encourage intentional and self-directed learning atmospheres and become the primary educator of our workforce. Anne stated that "by the year 2008, there will be 161 million jobs, but only 154 million people to fill those jobs. That's a shortfall of 7 million people. Never before has employee recruitment, motivation and retention been so important."

Our industry will bounce back...BUT it is up to each of us to do our part as leaders. Meetings are a strong symbol of our freedom, a right to assemble and a way to celebrate our life in a Democracy. As meeting professionals, we must move forward with our events. If you are the client, do not cancel your events. If you are a supplier, help your clients be flexible so they can have their events. If you are a planner, be creative on how you hold these events. If you are a meeting industry professional, help your colleagues who find themselves unemployed to network and possibly use them as contract labor when appropriate. All of us should remember how important it is to keep our events on the calendar.

People want to get back to work and live their lives. There is no reason to panic. America is resilient! Now is the time to connect more than ever. Believe in yourself and in our industry while we join together shaping our future, connecting and moving forward. God Bless America! 🌐



Linda Swindling  
The Peacemaker

# “CURRENT” AFFAIRS

## Peace at Work in these Turbulent Times

**Editor’s Note:** Each month, this column will present an industry profile, hot topic debate or industry event review to focus reader interest and discussion on “Current” Affairs. Your participation and feedback in this effort is both vital and welcome. Take this opportunity to voice your opinion. Let me know what you think. - Steven G. Foster, CMP, Managing Editor.

How do you get your employees to focus on work when the terrorist attacks of September 11th have changed us forever? How do you encourage people to be productive when their emotions are vacillating between rage, dismay, sympathy, hopelessness and revenge? It is not an easy task. The major challenge is to control what you can. You can control your reactions to this tragedy. If you have management authority, people are looking to you for your response. Here are some ways to restore peace and productivity to your workplace.

Give people time. This is a shock. They may need more frequent breaks. There will be a lull in productivity. More sick time may be used. Expect it.

Encourage employees to get help. If you have an Employee’s Assistance Program (EAP) or counseling services, encourage people to use them. Some of your employees may suffer from post-traumatic stress disorder. Others may need to deal with co-workers, clients, patients or family members who are suffering from mental problems related to this trauma. Refer your employees to professionals that are trained to help them get through these types of situations. With the depression linked to graphic scenes, you may also want to consider limiting TV watching to lunch & break times.

To the extent possible stop the gossip and speculation. People will need to talk and there is a need for information. However, too much time spent talking about the need for revenge and retribution is not productive. Remind employees that there are top people in charge of making those difficult decisions who are working on the proper response.

Do not let employees bully others. You have a duty to keep the workplace safe and free from discrimination. Problems are only increased if you allow your workforce to treat others differently based on factors such as race, national origin or religion. This might be a good time to circulate your policy on treating others with respect and not discriminating against co-workers, suppliers or customers.

Consider bringing in outside help. If your work environment seems to be suffering, you may want to bring in a stress management counselor. If productivity is low, you may want to hire a facilitator to help people focus on what these acts of war means to your business right now and what you are going to need to think about for the future.

Have a cause that people can rally behind. Consider sponsoring a clothing drive, donating blood, raising money, write encouraging cards to workers. One hotel brought cookies to airline personnel stranded in the city. Another is making posters for their New York office.

There is good news. You just may have to listen and look harder for it. One radio station reported on the architectural abilities of the engineers of the World Trade Centers. Instead of concentrating on the lives that were lost during the collapses, the reporter marveled at the strength of the structures & the length of time they withstood the crashes to allow so many to be evacuated.

Sing the praises of your own hometown heroes. There are people who are doing amazing things around you to support both the areas affected by tragedy and to keep business going as usual. Notice and appreciate those folks. Those employees who continue doing a good job, even during this chaotic time, deserved to be recognized.

Try to turn the attention to the good that is being done. There is a renewed patriotism felt throughout our land. Our own leaders have put aside political differences to support the president’s efforts. Communities are pulling together and are helping people they have never met. There is a resurgence of religion and people of different religions, including Muslims, are supporting the relief efforts. Countries are pledging their support to the United States.

Remember that ceasing business is what the enemy wants. Our nation received a wake up call. People do not want the United States to continue its economic success. Remind your employees that shutting down business is a form of retreat. One of the best ways to honor the victims, the medical providers, the rescue teams, and our supporters is to pull together and be productive. American workers have received the call. We need to answer that call by getting back to work.

*Linda Swindling is an author, attorney and mediator who works with executives and professionals to create better working environments, avoid lawsuits and improve negotiations. For more information go to [www.lindaswindling.com](http://www.lindaswindling.com) or contact Linda at (972) 416-3652 or (877) 800-5023 toll free. In addition, there is a wealth of information, including crisis communication, leave policies and how this may affect your efforts regarding diversity and preventing discrimination at the Society of Human Resources Management website: [shrm.org](http://shrm.org).*

DALLAS/FT. WORTH  
CHAPTER



DEFINING THE POWER OF MEETING™

## CURRENT

**Dallas/Fort Worth Chapter Office**  
Dallas/Fort Worth Chapter  
PMB 259  
7750 North MacArthur Blvd.  
Suite 120  
Irving, TX 75063-7501  
[www.mpidfw.org](http://www.mpidfw.org)

**Chapter Administrator**  
Randie Charnes  
(972) 869-3836  
Fax: (972) 506-7485  
[rcharnes@msn.com](mailto:rcharnes@msn.com)

**Vice President PR/Marketing**  
Beverly O’Laughlin, CMP  
Beverly O’Laughlin & Associates Inc.  
(972) 985-1676  
[beverlyolaughlin@aol.com](mailto:beverlyolaughlin@aol.com)

**Managing Editor**  
Steven G. Foster, CMP  
Circle R Ranch  
(817) 430-1561  
[stevenfoster@circranch.org](mailto:stevenfoster@circranch.org)

**Assistant Managing Editor**  
Alainna Palmer, CMP  
Highwire  
214-387-8634  
[apalmer@highwirepromotions.com](mailto:apalmer@highwirepromotions.com)

**Newsletter Coordinator**  
Dana Conley  
PDQ Results Printing  
(972) 680-9410  
[pdq-results@prodigy.net](mailto:pdq-results@prodigy.net)

**Advertising Chair**  
Cindy Provence  
PDQ Results Printing  
(214) 686-3121  
[pdq-results@prodigy.net](mailto:pdq-results@prodigy.net)

**Contributing Writers:**  
Elizabeth Chandler, Meadows Foundation  
Marti Fox, CMP, Global Goals  
Erin Longley, CMP, Imagine Events  
Pat McCain, CMP, Krisam Hotel & Resorts  
Patty Stern Markley, CMP,  
Dallas Meeting Management  
Dana Nickerson Rhoden, CMP, CMM,  
American Heart Association  
Alainna Palmer, CMP, Highwire  
Percy Sales, Software Spectrum  
Suzanne Silver, Hampton Inn West

**Photographer**  
Jim Woods  
JWoods Custom Photography  
(214) 395-5036  
[jwphoto@msn.com](mailto:jwphoto@msn.com)

MPI D/FW IS NOT RESPONSIBLE FOR THE CONTENT OF ARTICLES SUBMITTED FOR PUBLICATION. ALL ARTICLES ARE SUBJECT FOR EDITING AND/OR REJECTION BASED ON CONTENT.

# Your winning address for meetings and conventions!

Grand Casino has it all—thousands of square feet of flexible meeting space, beautiful ballrooms and an experienced staff to help plan a flawless event.



Oasis Resort & Spa at Grand Casino Gulfport

## Grand Casino Gulfport

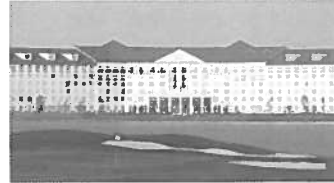
- 2 beautiful hotels featuring 1,000 spacious rooms and suites
- Over 12,000 square feet of flexible meeting and banquet space for all types of functions



Bayview Resort & Spa at Grand Casino Biloxi

## Grand Casino Biloxi

- 2 magnificent hotels with 1,000 deluxe rooms and suites
- Over 42,000 square feet of flexible space for meetings, banquets, receptions, balls, exhibitions and conventions



The Veranda at Grand Casino Tunica

## Grand Casino Tunica

- 3 first-class hotels with over 1,300 luxurious rooms and suites
- Grand Casino Convention Center—over 27,000 square feet of flexible meeting space
- Multipurpose event center, perfect for trade shows, meetings and live entertainment



Of course, when it's time to take a break and shake things up a bit, no one provides entertainment quite like we do! Experience exciting gaming action at our world-class casino, dine on fabulous cuisine, relax at Bellissimo Spa & Salon, enjoy superstar entertainment and sporting events or play a round of golf at one of our championship courses.

Please contact the Hotel Sales Department for more information.  
 Grand Casino Gulfport & Grand Casino Biloxi • 1-888-946-1946  
 Grand Casino Tunica • 1-800-946-4946 or 1-888-946-1946

[www.grandcasinos.com](http://www.grandcasinos.com)

  
**GRAND CASINO**  
 GULFPORT • BILOXI • TUNICA  
 Mississippi's  
 Winning Address

WHEN YOU NEED TO WIN, YOU NEED TO QUIT!  
 GAMBLING PROBLEM? CALL 1-888-777-9696

# Holiday Gala: Celebrate the Season with Your MPI Family and Friends

MPI Dallas/Fort Worth Chapter Holiday Gala

*"America's Holiday Classics: It's A Wonderful Life"*



Your hosts for the MPI D/FW Holiday Gala are, l-r: Nicole E. Northrop, CMP, Omni Mandalay Hotel, Gala Chair Wendy Foster, CMP, Circle R Ranch; and Gala Sponsor Ben Guerrero, South Padre Island CVB.

## Host Facility

### The Omni Mandalay at Las Colinas

The Omni Mandalay at Las Colinas is located in the prestigious Las Colinas Urban Center on the Mandalay Canal. This Mobil Four-Star, AAA Four-Diamond Hotel is 8 miles to DFW International Airport and 15 miles to Love Field. The Omni Mandalay has 410 newly renovated over-sized guestrooms, with 96 suites and 31,600 feet of renovated meeting space.

The Omni Mandalay is perfect for business and leisure travelers alike with:

- Full-service Fitness Center, state-of-the art Cybex equipment, sauna, and outdoor spa
- Full service Business Center
- High speed Internet access, dual data ports, and speaker phones in all guestrooms
- Select Guest program for the frequent traveler
- Complimentary covered self-parking

Trevi's an upscale casual Italian Mediterranean restaurant, featuring dishes from Italy and the Mediterranean. 24-hour guest room dining.

#### DIRECTIONS

**FROM DOWNTOWN DALLAS:** Take 35 E to 114 West (towards DFW Airport) to the O'Connor exit. Turn right on O'Connor and turn right on Las Colinas Blvd. The hotel is on the left.

**FROM FORT WORTH:** Take 35W North to 820 East to 183 East. Exit O'Connor and take a left on O'Connor. Go approximately 2 miles and take a right on Las Colinas Boulevard. The hotel will be on the left.

Thursday, December 13, 2001

Omni Mandalay Hotel at Las Colinas

221 E. Las Colinas Blvd., Irving, TX 75039 (972) 556-0800

6:00 pm-7:00 pm: Registration in the Las Colinas Ballroom foyer

6:00 pm-7:00 pm: Reception in the Las Colinas Ballroom A&B  
sponsored by



7:00 pm-8:30 pm: Dinner and Holiday Program  
featuring a performance of "The Nutcracker"  
sponsored by



8:45 pm-10:30 pm: Dancing to music of DJ Marshall Leak

Holiday Gala decor provided by



Overnight Accommodations available at the Omni Mandalay Hotel  
\$59.00 Deluxe King or Double  
\$79.00 for Mandalay Suite room

**Complimentary Self Parking in Garage**

**Valet Available at \$6.00/car**

Advanced Member Price: \$37.00  
Advanced Guest Price: \$42.00  
Onsite Price: \$47.00

R.S.V.P.

to Randie Charnes by 2:00 p.m., Monday, December 10, 2001  
fax: 972-506-7485

**ON-LINE REGISTRATION PREFERRED**

In the "Events" section at: [www.mpidfw.org](http://www.mpidfw.org) • email: [rcharnes@msn.com](mailto:rcharnes@msn.com)



We're spending  
\$25 million.  
You get the change.

Change. Change. Change. \$25 million worth. This is what we are spending to transform the Southwest's most complete lakeside resort and conference center. With over 300 all-suite accommodations, a 60,000 square-foot dedicated conference center, an 18-hole championship golf course, a 300 slip marina, 11 tennis courts, a health spa, 2 pools, and a beautiful 22,000 acre lake, we are already pretty extraordinary. But change is happening and you get to keep it.

*The true measure of meetings.*



600 Del Lago Blvd.  
Montgomery, TX 77356  
tel 800.348.1542 • fax 936.582.4918  
[www.dellago.com](http://www.dellago.com)

*Just 45 minutes north of Houston's  
George Bush Intercontinental Airport.*



Jennie Campbell,  
CMP, CMM  
Independent

# How is a Conference Center Unique? A Meeting Professional's Perspective



Certifications in the meeting profession are sought after and recognized in the business community as well as in the hospitality community. I have personally found this to be true in securing high-level positions when I was working in the corporate world as well as securing large accounts as an independent. I believe the same concept applies when a meeting professional is securing sites for both internal and external training, roll-out programs, etc.

As a corporate project manager and meeting planner for a technology company, I found my time was very sparse. Critically important to me, as I went from different cities all over the country, was the standard IACC certification. I could depend on this certification knowing that the particular conference center I was considering met the requirements to facilitate my training meetings. Just as meeting professionals continually strive to better themselves through education and certification to distinguish themselves as specialists, conference facilities should strive to do the same.

Conference centers should continually strive to not only achieve their certifications, but also to maintain them. This is critical to the meeting professional, especially in times of downsizing. These professionals are working with smaller staffs. Efficiency and

reliability are of utmost importance. Many times in the process toward making a final decision for a facility, certification plays an important role.

Please join us for an interactive discussion about conference centers from both the meeting professional's and the conference center's perspective.

DATE: January 8th, 2002

LOCATION:  
Hilton DFW Lakes Executive Conference Center

Registration: 3:00pm

Program: 3:30pm-6:30pm

COST: \$35.00 Members \$45.00 Guests

(Limited JPA Funds are available for approved applicants)

Note: Registered participants will receive a pre-program questionnaire to be completed and return prior to the date of the program.

## MPI D/FW Chapter Education Committee Presents

### Planning with Safety in Mind: Domestic & International Travel "New Rules in a New World"

Date: December 11, 2001  
Location: American Airlines Conference Center  
Cost: \$40.00 Members \$50.00 Guests

#### Program Schedule

12:00-1:30PM Lunch & Roundtable Discussions  
1:30PM Registration  
2:00PM-4:00PM Program

REGISTER ONLINE TODAY AT [www.mpidfw.org](http://www.mpidfw.org)

The attacks in America have changed the way we plan our programs forever. As an industry, we now must learn and implement new rules to ensure risk factors are considered for the safety of program participants.


Our speaker for the December Education Committee Workshop, Mr. Andreas Carleton-Smith, is flying in from Los Angeles exclusively for this MPI D/FW Chapter presentation. Mr. Carleton-Smith is a world-renowned crisis management expert who will share his experiences and help us all better understand what's happening in today's world. (Please see bio below.)

#### Topics include:

- \* Terrorism as we face it today
- \* How companies and individuals can mitigate risks

- \* How to be more aware when traveling or planning programs internationally
- \* Steps to follow in preparing a crisis plan while operating programs on-site
- \* Contract addendums
- \* Who to contract for directional guidance and evacuation protocol

Mr. Carleton-Smith spent 10 years in the British Army, the last three of which were spent on active duty with the Special Air Service (SAS), the elite Special Forces unit of the British armed forces. Responsibilities included commanding elements of the United Kingdom's counter-terrorist team. He represented the British government in several major international crises providing advice to presidents, ministers and ambassadors. His civil and military operational experience includes service in over twenty countries including Lebanon, Algeria, Colombia, Kashmir and the Philippines. Additionally, he was awarded the Military Cross for gallantry 'behind the lines' in the former Republic of Yugoslavia, on an operation in which his personal reports were handled directly by the UN Headquarters in New York and the White House situation room.

His experiences have been recorded in several books, newspaper and magazine articles such as; 'Ransom: The Untold Story of International Kidnapping', 'Fighting for Peace', 'No Escape Zone', 'All Necessary Measures', 'The Mail on Sunday', 'The Daily Telegraph' and 'FHM magazine'. 

# The MPI Kids Charity Ball Sponsors

Sabre Inc.	Guardian Angel
Kimberly Clark Corporation	Diamond
BBJ Linens	Platinum
Alford Media Services	Gold
Bill and Angela Barrett (Love for Kids)	Gold
Christie Lites	Gold
Events and Catering at Dallas Market Center	Gold
Fossil	Gold
Fun Factory Decorations & Special Events	Gold
Krisam Group Hotels & Resorts	Gold
Wyndham International	Gold
Betsey Johnson	Silver
Brad Hughes & Associates	Silver
Event411	Silver
GAC SouthPress	Silver
Hilton Hotels	Silver
Oilily	Silver
Starwood Hotels	Silver
Tom Thumb	Silver
Balloon City	Bronze
Bella Flora	Bronze
Build-a-Bear	Bronze
Charlotte Rouse	Bronze
Circle R Ranch	Bronze
Creative Productions	Bronze
Entertainment Enterprises	Bronze
Ken-Ran Entertainment	Bronze
Raider Jean Company	Bronze
Rampage	Bronze
Richland College	Bronze
Rough Creek Lodge	Bronze
Software Spectrum	Bronze
Steve Kemble Event Design	Bronze
Sunbelt Motivation & Travel, Inc.	Bronze
Vagabond	Bronze
Worldwide Incentives, Inc.	Bronze
Design & Productions	Level 1
Omni Hotels	Level 1
Technology Rentals & Service	Level 1
EFI Communications	Level 3
Ron Barker Photography	Level 3
V-Grafix	Level 3



# Highli

## The MPI Kids Charity Ball

Produced by Meeting Professionals International  
Dallas/Fort Worth Chapter



*Sponsorship Committee co-chairs Gregory Pynes (Renaissance Meetings & Incentives) and Sherry DeLaGarza, CMP (Dallas Human Resource Management)*



*Th  
Mc  
Fo  
Ci*



*The Platters performed their top R&B hits from the 5*



# ights from the 2001 MPI Kids Charity Ball



2001 Bill & Angela Barrett Award for Loving Kids was presented to The Meadows Foundation. Pictured, l-r: Bill Barrett, Angela Barrett, Meadows Foundation Board Member Debbie Gill and the 2000 Barrett Award winner Brinker-Simmons.



All Dress up-Up in the spirit of the Masquerade theme of the Ball were (l-r): Jill Wilkinson, Missy Simone, Alexis Sullivan-Cook, Lane Dudley, Diane Sullivan and Brian Cook.

◀ Mike and Mary South of GAC South press created the invitations and printed materials for the ball.



◀ Kids Ball Chair Percy Sales (Software Spectrum) and chapter president-elect Cheryl L. Beasley, CMP (Sabre) enjoy the festivities.



photos by Ross Beardsley



President Betty E. Garrett, CMP



- Celebrity Bears pictured from top to bottom:
- Handyman Bears by Greenside Construction. Winning bidder: Dale Justice
- Fossil Bear designed by Fossil, Inc. Winning bidder: Barry and Dale Justice
- Duck Bear designed by believeonline.com. Winning bidder: Steven G. Foster, CMP
- Britney Spears Bear designed by Christy Velez. Winning bidder: Jim and Nancy Pinnell



# TECH TALK

## Video-Conferencing Tips

The demand for "video-conferencing" has increased in recent months, especially as travel has been curtailed since the events of September 11th. The need to meet and share information continues, so when considering a video-conference these helpful tips will ensure your meeting's success:

- \* Be sure you take into consideration time zone differences or you may find some of your participants don't join the meeting on time
- \* Having a fax machine near the videoconferencing room is helpful when last minute information needs to be distributed
- \* Large font size on graphics materials is important since, without it, participants will not be able to see the image clearly even if they try to do so by getting closer to the screen
- \* Make sure all appropriate lighting is on so individuals appear evenly illuminated
- \* If the room you are in has windows, close all blinds or curtains
- \* Be aware of the transmission delay, and pause for others to comment
- \* Avoid making rapid movements during the call
- \* In order to get the best video image possible avoid wearing light colored clothing with overly detailed patterns and bright, flashy jewelry that reflects light.

## MARK YOUR CALENDARS - FEB. 8, 2002 2002 INSTITUTE FOR CHAPTER LEADERS

If you are an aspiring leader, an existing MPI leader, a community or an industry leader, you will want to attend the Dallas/Fort Worth Chapter's 1st Annual Institute for Leaders - Your Ticket to the Top.

An elite half day leadership development program, the Institute's schedule provides important "how to" skills to enhance every leader's effectiveness. Faculty includes top-caliber professionals with proven experience and ability. This program is strongly recommended for Dallas/Fort Worth members wishing to serve as Chapter Board of Directors or Committee Chairs or to move onto International positions.

Steve Kemble and Colleen A. Rickenbacher, CMP, CSEP are the co-chairs for the 2002 Institute for Leaders. Both have numerous experiences in leadership roles and are Past Presidents of our Chapter. Colleen is serving on the International Board of Directors and Steve is on the International Strategic Committee.

### Agenda for February 8, 2002

- 12:00 - 1:30 p.m. Leadership Luncheon
- 1:30 - 5:00 p.m. Leadership Program with speakers that will take us to the next level in leadership
- 4:00 - 5:00 p.m. Chapter Past Presidents Meeting
- 5:00 - 6:30 p.m. Leadership Reception with the MPI D/FW Chapter Past Presidents and the Current MPI D/FW Board of Directors

Cost: \$45 Members \$65 Non-members

Mark your calendars now. More details to follow.

Location: Circle R Ranch  
5901 Cross Timbers Rd. • Flower Mound, TX 75022 • (817) 430-1561

## IF YOU THINK BUSINESS HAS NO PLACE IN A RESORT, THINK AGAIN.

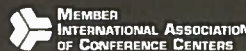


With its magnificent Gulfside setting, The San Luis Resort, recipient of the AAA Four Diamond Award®, Successful Meeting's Pinnacle Award and Meeting News Planners' Choice Award, has long enjoyed a reputation of The Premier Resort & Conference Center on the Texas Gulf Coast. But that's just one side of the story.

For beyond the beaches and sea breezes lies a world of advanced conference capabilities to rival the nation's best. With more than 40,000 square feet of high tech conference space, state-of-the-art communications technology, and award-winning staff of service-savvy professionals to ensure your meeting's success.

We invite you to look at business from a whole new point of view...overlooking Galveston's spectacular beachfront. Call today to discover the unique blend of hardworking conference facilities and relaxing resort amenities that is The San Luis.

Call Today To Book Your Next Meeting: (800) 445-0090  
or Laurie Shaw at our Dallas Regional Office (972) 712-9936



### THE SAN LUIS RESORT

SPA & CONFERENCE CENTER

53rd & Seawall Blvd. • Galveston Island, Texas  
www.sanluisresort.com



**Judy Obinwa**  
The Meeting/Event

## Membership Committee Asks “Why Join MPI?”

The membership committee recently talked with a new member, Judy Boyd Obinwa with The Meeting/Event, to find out why she joined MPI. Here’s what she said:

**Q:** What was your mission as you stepped out from being a corporate planner to an independent planner?

**A:** Corporate finishing school taught me to do everything faster, better and more economical than the competition. I wanted to follow these rules when starting my new business, but with a BANG. In order to be successful, I knew I needed to:

- \* Stay informed,
- \* Build relationships, and
- \* Sell

**Q:** What steps have you taken to accomplish this mission?

**A:** First I focused on FASTER so I bought a book. This book advised me to join an association to get a comprehensive understanding of the meeting management industry. So using the Internet URLs provided in the book I found my way to the MPI website, and attended my first MPI D/FW chapter meeting. I discovered that MPI consists of planners and suppliers; non-profit associations and major corporations. I thought “what a concept - a buffet of resources.” This accomplished the BETTER.

**Q:** So how has your membership affected your business?

**A:** I now consider MPI an extension of my business, helping me reduce the time and costs associated with locating suppliers for clients (MORE ECONOMICAL). In just 6 short weeks we recuperated 100% of our membership dues - talk about ROI!!!

I wouldn’t have been able to accomplish my mission of FASTER, BETTER and MORE ECONOMICAL without my membership. Thank you MPI!!!



## New Kids on the Block

## Welcome to Our Newest Members!

- Pamela R. Barnes.....Student
- Iris D. Ervin.....The Women’s Museum
- Dorothy W. Farkash.....T W Design & Construction
- James M. Fortune.....Smith Companies Lajitas Resort
- Martha J. Haire.....Hall Office Park Hall Event Center
- Heather S. Lange.....Hampton Inn Downtown Dallas/West
- Danny Lopez.....United States Postal Service
- Jacqueline Y. Madden.....City of Irving
- Robert L. Madrid.....United States Postal Service
- John Rivas.....Bella Flora
- Carol Schroder, CHME.....The Bishops Lodge
- Elek H. Sebestyen.....Reno-Sparks CVA
- David K. Walter.....J & S Audio Visual Inc
- Erin T. Young.....The Studio Movie Grill

# Membership FAQ:

## Our Eyes are on YOU!

**Q:** Due to recent world events impacting our economy, we are all being asked to tighten our budget belts. How do I justify renewing my membership in MPI?

**A:** Now more then ever, as professionals we need to stay on the cutting edge of our industry. Our professional local chapter provides your company the connections and the tools, not to mention the many discounted business services available when using your membership card. And don’t forget the following advantages of membership:

- \* Superior educational programming
- \* Timely topical communications
- \* Extensive resources (member directory, chapter web site)
- \* Peer interaction with planners and suppliers
- \* Current issues, technologies and techniques are addressed

Our DFW chapter provides your company the connections and tools needed to be recognized as a leader in the chapter and industry. Plus there are many discount business services available when using your membership card.

Have a question you would like to have answered - submit to Elizabeth Chandler, VP of Education at [echandler@mfi.org](mailto:echandler@mfi.org).



**Wayne Wallgren**  
Worldwide Incentives, Inc.

## Spirit of MPI Award!

Over the last few years, Wayne has become very involved in our Chapter, making his connection through the Marketing Committee. His contributions are many. A sampling of his production skills are reflected in the past Awards Program, Nomination forms and the Golf Tournament Brochures. Wayne handles complicated pieces that our Chapter would otherwise have to pay.

In addition, Wayne is a stickler for details always making sure that the MPI/DFW Chapter looks GOOD. Finally, his involvement in the chapter has helped him in forming alliances with other independent planners. Wayne always comes through for the Chapter and most certainly embodies the “Spirit of MPI!”

*Reminder on future Spirit of MPI nominations: Please, please include your name on any nominations that you send in so that the Spirit Committee may contact you for further information on your nominee!*



## Construction Update:



GAYLORD OPRYLAND™

RESORT & CONVENTION CENTER

*Texas*



*National Sales Managers for Gaylord Opryland Resort & Convention Center (l-r) Wendy Ezernack, Amy Smith, Michelle Carter, CMP, CHSP, Kerri Atterberry and Pam Altman stand in front of the on-going hotel construction project on the shores of Lake Grapevine. The sales staff also includes Kristen Harris (not pictured).*

- Has there been a name change to the Opryland Hotel Texas in Grapevine?

Yes, the new name is Gaylord Opryland Resort and Convention Center, Texas and a new company-wide brand has been designed.

- Have there been some delays in the opening date of the hotel?

The company has altered its very aggressive pace to a more normal construction schedule. Construction at the site continues with plans exploring the possibility of moving forward with another more accelerated pace. The latest scheduled opening would be Summer 2004.

- What staffing changes are occurring at the hotel?

The hotel sales office is fully staffed and operational. The sales managers are continuing to contract groups for 2004 and beyond.

#### Hotel FACTS:

- 1,500 guest rooms, including 120 suites
- Over 400,000 square feet of pre-function, meeting, and exhibit space
- 25,000 square foot European Spa with 26 treatment rooms
- Situated on 150 acres of lakefront property
- 36 holes of golf on site

# One Great Center ... Getting Better.

For all your special events.

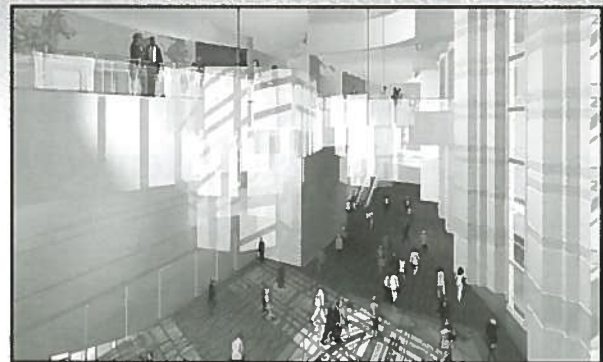
## Fort Worth Convention Center You're Going to Like the Way We Look.

From the spacious and inviting grand lobby to a 30,000 square-foot ballroom, the Fort Worth Convention Center will be an architectural delight. And visitors from around the world will enjoy the special touches incorporating the city's western heritage.

With more than 37,500 square feet of meeting rooms, 227,000 square feet of exhibit space, and a 13,500 seat arena, the Convention Center will provide the perfect venue for all of your special events.

Phase I completion, including the ballroom, is scheduled to open in Spring 2002 with the final phase ready for use in the first quarter of 2003. Reserve your space today in the new and exciting Fort Worth Convention Center.

**For booking information, call 817-570-2222.**



It's One Great Center That's Going to Dazzle You.



## 2001 President's Award

# Wendy Foster and Gene Garrett are "married" to MPI

Mary Kay Ash said it best - more than money and sex, people want recognition and praise. MPI D/FW's newest form of recognition and praise is its "President's Award," implemented just three short years ago by former chapter president Colleen Rickenbacher, CMP, CSEP.

During his term of "ACTION" in 2000-2001, president Steve Kemble selected members Wendy Foster, CMP (Circle R Ranch) and Gene Garrett (Garrett Speakers International) as the recipients of this honor. For Kemble, the award has special significance.

"Wendy and Gene were selected because of their commitment to MPI over the years, but more importantly because of their ACTIONS during my term," he said. "On a personal note and to be quite honest, I selected them because of their patience with me."

Kemble began his term on July 1, 2000, inheriting a chapter rapidly closing in on the 1,000-member mark. He enlisted the support of Immediate Past President, Steven Foster, CMP and President-Elect Betty Garrett, CMP to form a "Tri-Presidents position."

"Steven thought his job was already done and Betty thought she wouldn't have to start her term for a year," Kemble said. "I quickly realized I was taking them both away not only from their jobs, but more importantly from their families, something I myself learned the enormous value of this past year."

To his amazement, neither Wendy nor Gene complained about the extra responsibilities Kemble asked of their spouses.

"Awarding them with the President's Award was a small token of the gratitude that not only I, but our entire chapter owes to them," said Kemble, now serving as the chapter's immediate-past president. "I will always admire them for letting Steven and Betty serve with me. They are both model members and, I am proud to say, true friends."

For both Wendy and Gene, the honor came as a complete surprise when their names were called at last year's awards gala.

"I was so surprised," Wendy recalled. "You don't stop and think about the sacrifices that are made during the term. It was nice someone stopped and acknowledged."

"As Kemble talked about the award and who the recipient would be, Wendy and I, without speaking, gave each other a look that said 'is he talking about us?'" said Gene. "Then silently, we both said, 'nah.' When he called our names I think we both were stunned."

Wendy and Gene share not only the honor of winning the President's Award, but an interesting personal/professional relationship as well. Both their spouses have been MPI chapter presidents and both also are their respective business partners. The impact of those unique

relationships have provided each with a valuable insight into MPI involvement.

"Besides having to share Steven with 900 other people, it confirmed what I had already believed, one person CAN make a difference," said Wendy. "I was once informed a 'true leader provides light.' Steven has proven it can be done."

"I encouraged Betty to go for the presidency of the MPI D/FW chapter, knowing how near and dear to her heart MPI is," Gene said. "Because we work together on a daily basis and because we have such a wonderful personal relationship, her time spent on MPI matters has not been a problem. I have many friends throughout the world that I would not have had if not for Betty's involvement in MPI."



### What do you like BEST and WORST about your job?

Foster: "Best, seeing people REALLY having a good time! Worst, it's truly 24/7."

Garrett: "Best, in our business the work load is such that we can generally take off and go somewhere whenever we want. Worst, with respect to income, it's either feast or famine."

### What is something people don't know about you?

Foster: "I grew up on a horse farm riding Arabian horses, and won a Top 10 national championship."

Garrett: "I was a cheerleader in both high school and college."

### What do you like to do in your free time?

Foster: "Playing with my family. Nothing better than just hangin' out with my husband, toddler and infant."

Garrett: "Travel, read and play golf."

### What advice would you offer to someone starting out in this business?

Foster: "Of course, get involved with MPI. And try to work in the field as much as possible."

Garrett: "Find a person in the meetings industry who would be willing to work with you and be a mentor. By all means, become a member of MPI and set a goal to obtain the CMP designation as soon as you can meet the requirements."

Wendy Foster, CMP, is Managing Partner at Circle R Ranch. She can be reached at (817) 430-1561 or [wendyfooster@circerranch.org](mailto:wendyfooster@circerranch.org)

Gene Garrett, who retired as Chief of Finance at General Dynamics after 36 years, is Vice President of Garrett Speakers International. He can be reached at (972) 513-0054 or [Gene@GarrettSpeakers.com](mailto:Gene@GarrettSpeakers.com)



## Heard it through the Grapevine!

Alainna Palmer, CMP  
Highwire  
'Grapevine' Columnist

Lisa Flick has accepted a position with *Dave & Busters* headquarters as project manager of special event sales.

Alex Vurpillat with *Destination Dynamics International (DDI)* is pleased to announce her additional staff member, Terry Shields. He was formerly regional director of food and beverage for Culinaire, and has joined Alex's staff as executive vice president of event production. She is also the proud owner of a new fleet of vehicles!

The Western Region of ISES held its first Regional Education Conference where the 5th annual WESTIE Awards, encompassing the Western Chapters of ISES, MPI and NACE was held. This year they awarded the first ever Western Region Legacy Award to a member who has given contributions to the growth of the Western Region and ISES overall. The award was presented to **David A. Granger, CSEP** with *Designs Behind the Scenes* for having the vision of an allied organization awards program, and for his devoted work throughout the years with ISES. Congratulations, David!

Sue Fry has recently joined *PGI*. She was formerly with *Destination Dynamics International (DDI)*.

Gregory Pynes has joined the team as director of sales at *Renaissance Meetings & Incentives*. He was formerly with *Events Unlimited*.

Paula Fenner with *Westin Stonebriar* was interviewed for the *Special Events Magazine*, where she is spotlighted in "The Last Word" article on page 66.

Trace Arnold with *Texas Lil's Dude Ranch & Event Center* is pleased to announce the opening of his new restaurant at the ranch. It's probably the only restaurant around where you can ride horse back while you wait for your table!

To submit member news and information, please contact  
Alainna Palmer, CMP  
HIGHWIRE/Adventures in Advertising  
214-387-8634 • 972-377-8730 (Fax)  
apalmer@highwirepromotions.com



DEFINING THE POWER OF MEETINGS™

**2002 PEC-North America to be  
Web cast Via MPIWEB.org and  
Forbes.com LOG ON!**

Beginning with MPI's 2002 Professional Education Conference - North America (PEC-NA) Jan. 20-22, in Honolulu, WorldBridge will produce and Webcast MPI events via MPIWeb ([www.mpiweb.org](http://www.mpiweb.org)) and on Forbes.com.

If you can't physically attend the MPI PEC-North America, be sure to tune into the webcast!



Suzanne Silver  
HamptonInn-WestEnd

## From The Heart

The MPI D/FW Chapter Community Service Committee (CSC) has been working diligently on various activities throughout the year. We set of goal of \$6,500.00 in donations by June 2002 and are well underway to achieving our goal. Below is a list of our recent events as well as our upcoming events. Thank you for your support.

August 2001	Shoes for Orphan Souls	raised \$700.00
October 2001	Susan G. Komen Race	raised \$240.00
November 2001	Towels/ Sheets/Blankets	
December 2001	Love 4 Kids Holiday Party	
February 2002	Operation Kindness: Donations to benefit the Animal Shelter	
April 2002	Special Olympics: Volunteer your time to assist with the games as a hugger, a greeter or just to cheer someone on	
May 2002	Clothes/Toiletry Drive: Donations of Clothing and Toiletries to benefit Genesis Women's Shelter	

Please bring any donations to the specific monthly chapter meetings. And, keep in mind that all donations make you eligible for our drawing after each event—great prizes are available. Stop by the CSC booth at the next monthly meeting. Or, email CSC Chair Suzanne Silver at [ssilver@hamptondallas.com](mailto:ssilver@hamptondallas.com) or CSC Co-Chair Lora Brandis at [lora@rainmakeradv.com](mailto:lora@rainmakeradv.com) for more information.

## Big Bucks for Booking in the Branch!

Farmers Branch is home to 12 Outstanding Brand Hotels, 85 Corporate Headquarters, 35 Fortune 500 Companies. So whether traveling to FB on business or pleasure, you will not find a better view of the Metroplex than the one from Farmers Branch.

### Meeting Planner Incentive Program:

- **Step 1:** Call Maureen Gutierrez at FBCVB at 972-919-2634
- **Step 2:** Book \$50K in rooms revenue in one of our twelve Farmers Branch Hotels
- **Step 3:** Receive a Cash Incentive of \$750.00
- **It's that Easy!!**

**DALLAS**  
1-800-BRANCH-9

\*Best Western Dallas North \*Comfort Inn Dallas North \*Days Inn North Dallas  
\*Doubletree Club Farmers Branch \*Econolodge Dallas Airport \*Fairfield Inn by Marriott Dallas North \*Hilton Dallas Parkway \*Holiday Inn Select North Dallas \*La Quinta Inn Farmers Branch \*Omni Dallas Hotel Park West \*Renaissance Dallas North \*Studio PLUS Farmers Branch\*

## November Meeting Chapter Partners

Please salute the following companies and individuals for their contributions to the meeting.

### Featured Speaker

Vince Panella  
*Panella Strategies*

### Facility, Reception, Luncheon & Stage Decor

Embassy Suites/Outdoor World

### Sponsor

**IRVING**  
T E X A S  
Irving Convention and Visitors Bureau

### Centerpieces

Grapevine  
Convention & Visitors Bureau  
La Buena Vida Winery  
Embassy Suites Outdoor World

### Nametag Stickers

Sy Retsky  
*A.L.I. of Texas*

### AV Services & Video Production

Nick Sandberg, Audio Visual Manager  
*Embassy Suites/Outdoor World*

Bill Reeser, Audio Visual Consultant  
*AVW Audio Visual*

### Photography

Jim Woods  
*J Woods Custom Photography*

### Program Committee

Marcy Roitman Boothe  
*Grapevine CVB*

Lisa South, CMP  
*Absolute Solutions, LLC*

Sandy Summers, CMP  
*SB Summers & Associates*

Cindy Hamilton Hartner, *Cityplace*  
Hollye Edwards, *Cityplace*

## Time Management Techniques are MPI D/FW's focus

Vince Panella, founder of Success-Centered Time Management and Power Marketing Principles, was the featured speaker at the November Chapter meeting. The meeting was sponsored by the Irving Convention & Visitors Bureau and hosted at the Embassy Suites Hotel Outdoor World at DFW International Airport.



November's meeting sponsor was the Irving Convention & Visitors Bureau. Interest in Irving was high, as attendees stopped to visit at their booth. Pictured (l-r) are: Cheryl Hopkins, National Corporate Sales Manager, Irving CVB; Jennifer Harrington, National Association Sales Manager, Irving CVB; Susan Burk, Grapevine CVB; Shannon Gable Elms, Grapevine CVB, and John Cychol, Director of Sales, Irving CVB.



Bill Bretches, CHA, General Manager of the Embassy Suites Hotel Outdoor World at DFW International Airport, and Vince Panella, author of *The 26-Hour Day* and the guest speaker for November's chapter meeting.



Facility Hosts from the Embassy Suites Hotel Outdoor World at DFW International Airport were Director of Sales Cynthia Golden, CHME and Director of Catering Stephen Zahn.



Friendly Faces can always be found at the chapter meeting registration desk. Bethani Blair is welcomed by chapter administrator Randie Charnes and Lori Mauser (Irving CVB).



Towels, sheets and blankets were collected by the Community Services Committee for The Housing Crisis Center at the November meeting. Pictured, l-r, are Tracy Dunlap (Lone Star Park), Kami Proulx, CMP (Nth Degree), Community Services Committee Chair Suzanne Silver (Hampton Inn-West End), Elly Whaley (The Freeman Companies), committee co-chair Lora Brandis (Rainmaker Advertising) and event chair Bethani Blair (Guest Lodge at Cooper Aerobics Center).



DEFINING THE POWER OF MEETINGS™

[www.mpidfw.org](http://www.mpidfw.org)

Dallas/Fort Worth Chapter  
PMB 259  
7750 North MacArthur Blvd.  
Suite 120  
Irving, TX 75063-7501

PRE-SORTED  
FIRST-CLASS MAIL  
U.S. POSTAGE  
PAID  
DALLAS, TX  
PERMIT NO. 1930



Former chapter president Colleen A. Rickenbacher, CMP, CSEP (center in pink) is surrounded by members of the MPI D/FW Chapter team who participated in the Susan G. Komen "Race for the Cure" on October 20. The Susan G. Komen Breast Cancer Foundation sponsors the annual race and event. Members of the chapter team participating included: Lora Brandis, Collin Clayton, Lynn Lewis, Jaime McDonald and Diane Ray.

## MPI D/FW Calendar Information

### DECEMBER

12/11/2001	Safety Risks - Educational Event	12:00pm - 4:00pm	AA Conf. Center
12/11/2001	Membership Committee	TBD	TBD
12/11/2001	P/R-Marketing Committee	TBD	TBD
12/12/2001	Board of Directors	5:45pm-7:00pm	TBD
12/12/2001	Education Committee	TBD	TBD
12/13/2001	Chapter Holiday Gala	6:00pm-10:30pm	Omni Mandalay
12/18/2001	Community Service Committee	5:30pm-6:30pm	Doubletree Lincoln

### JANUARY

1/08/2002	P/R-Marketing Committee	TBD	TBD
1/08/2002	Membership Committee	TBD	TBD
1/09/2002	Education Committee	TBD	TBD
1/24/2002	Program Committee	5:30pm-6:30pm	Hyatt Regency Dallas
1/29/2002	Community Service Committee	5:30pm-6:30pm	Doubletree Lincoln
1/30/2002	Board of Directors	5:45pm-7:00pm	TBD
1/31/2002	Chapter Monthly Meeting	11:00am-1:30pm	Hyatt Regency Dallas

### FEBRUARY

2/08/2002	Institute for Leaders	12:00pm-5:00pm	Circle R Ranch
2/08/2002	Chapter Past Presidents Meeting	4:00pm-5:00pm	Circle R Ranch
2/08/2002	Institute for Leaders Reception	5:00pm-6:00pm	Circle R Ranch
2/12/2002	Membership Committee	TBD	TBD
2/12/2002	P/R-Marketing Committee	TBD	TBD
2/13/2002	Education Committee	TBD	TBD
2/14/2002	Program Committee Meeting	5:30pm-6:30pm	TBD
2/21/2002	Supplier Showcase	8:30am-3:30pm	Dallas Conv. Center
2/26/2002	Community Service Committee	5:30pm-6:30pm	Doubletree Lincoln
2/27/2002	Board of Directors	5:45pm-7:00pm	TBD

### Coming Next Month!

The "Golf and Meetings" special issue in January 2002 features information and advertising on many unique courses available locally to planners of golf events and meetings.

Also included will be registration and sponsorship opportunities for MPI D/FW Chapter Golf Tournament, Wednesday, April 10, 2002, at the Cowboys Golf Club in Grapevine.

Space for advertising and participation in the "Golf and Meetings" issue still is available **THIS WEEK ONLY!** For further information, contact Cindy Provence, PDQ Results Printing, at (214) 686-3121 or email at [cindypro@airmail.net](mailto:cindypro@airmail.net)

