

Chapter of the Year
1989 ★ 1990 ★ 1994
1996 ★ 2001

Inside

Presidents Message.....2

MPI Super Heroes.....3

August Chapter Meeting.....5

July Meeting Highlights.....6

WEC / JPA & CMP.....7

Multicultural Initiative.....8

Education News.....9

Chapter Charities.....9

Honing Leadership Skills...10

Membership News.....11

Grapevine.....11

**For Up-to-date
Chapter Information
& Calendar of Events
Log on to
www.mpidfw.org**

Vision Statement

To be the pivotal force in positioning meetings and events as key strategic components of an organization's success.

Mission Statement

To be recognized as the leading global membership community to shaping and defining the meeting and event industry.

On August 23rd, be prepared to enter...



The Accident Zone: get the 411 on the 911



by Dvorah A. Evans, CMP

Imagine if you will a world where dreams are music and the people are the instruments. Where every room holds magic and where the party never ends. This my friends is the meetings industry and it's a world where anything can happen (and usually does) and the unexpected is around every corner. Many know the stories yet few know the solutions.

Medical emergencies can happen at anytime and often the difference between life and death may be minutes or even seconds. Emergency response times and capabilities vary greatly from venue to venue and destination to destination. With the expanse of many mega-meeting places, it can take more than five minutes to reach the victim once EMS is even on the scene.

For years, preparations for and response to medical emergencies at meetings were not at the forefront of the meetings industry's agenda, so meeting planners are now taking the opportunity to make this a critical issue for the advancement of our profession and the enrichment of our meeting experiences.

Calling 911 is not the only answer. The preparation for medical emergencies is a critical function for meetings of all sizes and a medical emergency readiness mindset should be promoted as a core professional competency. When medical emergencies occur, we know that we can't save everyone. But everyone deserves the best possible chance to be saved. Below is a sample of what should be included on your medical emergency preparedness checklist:

- Pre-con meetings address management of medical emergencies and protocols and addresses who will do what, when, where, and how.
- Staff members can recognize medical emergencies

and activate on-site medical emergency response systems.

- Medical emergencies are prepared for according to the demographics of the membership (i.e. age ranges, pre-existing medical conditions, special needs, etc.) Will circumstances, such as weather or special activities, increase the odds of illness or injury?
- You and your staff routinely engage in medical emergency plan drills at your offices and at your meeting site.
- Information about the designated medical emergency care facilities is provided to staff and attendees. Signage is placed throughout facility and instructions on what to do in case of an emergency are announced.
- Emergency transportation arrangements are made at least six weeks before the meeting.
- Post-emergency continuity protocols are in place. Staff members are designated to manage the needs of people who have become ill, injured or, in a worst-case scenario, have died.

In a space and time continuum where the unexpected becomes reality, ask yourself this question: Are you prepared? Would you know the appropriate steps to take or would common sense evade you like a decent meal on an airplane? Well, fasten your seat belts and grab your flotation device because your ticket has been purchased and the wheels are up as you are about to enter...the Accident Zone.

continues on pg 10

(*Some excerpts from *Medical Emergency Preparedness Checklist for Professional Meeting Planners* by Richard M. Obertots (2003) at www.meetingsnet.com.)

President

Nancey Hernandez, CMP
Dallas CVB
214-571-1052

President-Elect

Carol Benavidez, CMP
HelmsBriscoe
972-396-0423

Immediate Past President

Sally Goldesberry, CMP, CMM
Society of Petroleum Engineers
972-952-9380

Vice President of Communications

Jesh Batra
The Adolphus Hotel
214-651-3628

Vice President of Education

Lawana Gladney, PhD
Emotional Wellness, Inc.
972-889-9656

Vice President of Finance

Jason Ware
American Heart Association
214-706-1474

Vice President of Membership

Carrie Elder, CMP
Texas Society of CPAs
972-687-8663

BOARD OF DIRECTORS

Director of Education

Timothy Arnold
Hilton Hotels
972-624-1144

Director of Leadership Development

Kim Reynolds, CMP, CMM
Alliance Data
972-348-5265

Director of Member Care

Robert Sanchez, CMP
Doral Hotel & Golf Club
817-497-3060

Director of Monthly Programs

Lisa Flick
Creative Cuisine
469-461-0428

Director of PR/Marketing

Paula Bruton, CMP
Las Colinas Country Club
972-650-5064

Director of Recruitment

Linda Sergeant
BBJ Linen
214-651-9020

Director of Special Events

Carole May, CTC, CMP
Event Network Group
817-732-1704

Director of Sponsorships

Matthew Massengale, DMCP
EDS
972.605.6418

President's Message

OWN your membership in MPI!

We have just returned from the MPI World Education Congress. What an incredible experience! We joined over 3500 attendees in Montreal to share ideas, build relationships and gain knowledge from each other.

We kicked off the conference with our "traditional" gathering with our fellow Texas Chapters during a reception at the Intercontinental Montreal. It was great to visit with so many friends from the Houston and Texas Hill Country Chapters! We were joined in our celebration by Bren Clevenger-Ori, the new Chief Operating Officer of MPI International and Kimberly Fischer, the new Director of Chapter Business Management. What an honor!

On Saturday, several of us attended the Chapter Leaders Forum. This was a great opportunity to interact with other Chapter Leaders and share best practices with one another. We were also able to have a frank discussion about what our chapter and our individual members need to create success.

We know that the value of MPI membership can be based on different things.

- To a Supplier this can mean networking and business connections
- To a Planner this can mean receiving quality education and sharing best practices and solutions
- To a Student this can mean getting mentored and creating career opportunities


As a chapter, it is important that we address all of these needs.

We can ALL help each other get the most of our membership!

- Encourage business relationships with each other. "Buy MPI." Support your Chapter Members and our Sponsors by utilizing them whenever possible. Suppliers - be proactive when you cannot "book the business." Refer to your colleagues and this will be remembered (both by the company you referred business to and your client). One of our members specifically books business when she can with our sponsors and host facilities - she makes sure that they are aware that she is booking with them because she saw them through MPI events.

- Share your knowledge with others. This applies to both Planners and Suppliers! If you have seen a fabulous program somewhere - suggest it for the MPI D/FW Chapter. Get involved in a committee and share your ideas.

- If you have many years of experience in our industry - share your insight. Mentor a new member or student. Create relationships within our chapter and "go outside" your daily network.

Many of you have expressed to me that you do not "have time" to get involved in the Chapter - but by taking the simple steps above - you CAN and you will make SUCH a difference by supporting our other members. **BUILDING PARTNERSHIPS FOR A LIFETIME** benefits all of us! 



Nancey Hernandez, CMP
2007-2008 President



BOARD BULLETS

Submitted by Carol Benavidez, CMP
MPI D/FW 2007-2008 President-Elect

Bring on your business associations and receive appreciation. (A current member can qualify to receive a \$50 AMEX Gift Cheque for every new member.)

Unfolding is a new Strategic Partnership Packet. As a Supplier, you can receive more exposure through the entire July 2007-June 2008 term.

You can make a difference. Join a committee today! One of our new committees will revise the process and procedures of Award recipients in our Chapter to ensure proper recognition.

Marriot Las Colinas; Thank you for sponsoring the July Board Meeting.

Planners; we need your help. Please complete the planner survey so we can compile the collective buying power within the D/FW Chapter.

I bet you want to know more about all of the above! Go to our web site, www.mpidfw.org for all the details.

Team MPI “Super Heroes” Show Their Powers

by Neva Lamb, A&H AwardPro

Faster than a speeding bullet? Not really, but faster than ISES & NACE! Able to leap tall buildings? Okay, so we were doing good to leap up and down in the cheerleading competition!



Super Heroes leaping (sort of) over tall buildings in the Cheerleading Competition. L to R: Michelle Moos, Meadows Foundation; Robert Sanchez, Doral Hotel & Golf Club; Patty Adams, Fox Sports Grill; Neva Lamb, A&H AwardPro; Lamarque Polvado, Quest Drape

Thanks to all who participated on the team and our MPI fans who cheered us on to victory. The camaraderie, laughs and competitive spirit were next to none. Hope to see you on TEAM MPI next year!

Team MPI Super Heroes: Captain, Neva Lamb, A&H AwardPro; team members Sandie Fouke, The Mansion; Alison Kieckhafer, Liquid Productions; Sarah Heus & Linda Sergeant, BBJ Linen; M.T. Hickman, Richland College; Robert Sanchez, Doral Hotel & Golf Club; Lamarque Polvado, Quest Drape; Patty Adams, Fox Sports Grill; Sharon Lindberg, Savoya; Michelle Moos, Meadows Foundation; Rupa Dutia, Regali Promotions; Suzanne Crim, The Bus Bank.



Sandie Fouke giving the “Loser” signal to the other metroplex event industry teams: NACE, ISES, HSMIA, JWI & TxACOM



Our Team MPI winning Super Heroes (L to R back row) Sarah Heus, BBJ Linen; Sandie Fouke, The Mansion on Turtle Creek; Linda Sergeant, BBJ Linen; Suzanne Crim, The Bus Bank; Michelle Moos, Meadows Foundation; Alison Kieckhafer, Liquid Promotions; Neva Lamb (team captain) A&H AwardPro; M.T. Hickman, Richland College; front row: Robert Sanchez, Doral Hotel & Golf Club; Patty Adams, Fox Sports Grill; Lamarque Polvado, Quest Drape. (Not pictured: Rupa Dutia, Regali Promotions)



Neva Lamb

On a fun filled evening on May 21st, TEAM MPI “Super Heroes” took the 2nd Annual Event Industry Olympics by storm. About 150 people from area event industry associations gathered at the Pizza Hut Park to participate in the wacky team Olympic events, sponsored by the ISES Dallas Chapter.

Our own TEAM MPI donned their red capes, masks and glittery star energy belts and showed the event industry just who really are the Super Heroes of the event industry. From the Table Setting Relay Race and Soccer Ball Shoot-Out to the Team Cheer Competition and Costume Contest, our TEAM MPI excelled in the team building competitions and brought home the 1st Place trophy!



Team MPI preparing their Super Hero costumes Suzanne Crim, The Bus Bank; Sandie Fouke, The Mansion on Turtle Creek; Patty Adams, Fox Sports Grill; Neva Lamb, A&H AwardPro & Robert Sanchez, Doral Hotel & Golf Club



MEETING PROFESSIONALS INTERNATIONAL

Founded in 1972, Meeting Professionals International, with nearly 20,000 members in 60 countries and four chapters in formation, is the leading global community committed to shaping and defining the future of the meeting and event industry. For more information, visit www.mpiweb.org.

CURRENT

Managing Editor

Patty Markley, CMP
DMM Group
(972) 233-8524
patty@groupdmm.com

Newsletter Coordinator/Designer

Dana Conley
PDQ Results Printing
972-680-9410
pdq-results@prodigy.net

Newsletter Advertising Sales

Matthew Massengale, DMCP
EDS
972-605-6418
matthew.massengale@eds.com

Contributing Columnists

Heard It Through the Grapevine
Leah Belasco
972-818-4811

MPI Advancing Women
Tara Judd
United Way of Metropolitan Dallas

Multicultural Initiative
M.T. Hickman, CMP, CTP
Richland College

Photographer

Jim Woods
J Woods Custom Photography

MPI Dallas/Fort Worth Chapter Office

Dallas/Fort Worth Chapter, PMB 259
7750 North MacArthur Blvd., Suite 120
Irving, TX 75063-7501
www.mpidfw.org

Chapter Administrator

Randie Charnes
(972) 869-3836 • Fax: (972) 506-7485
info@mpidfw.org

MPI D/FW IS NOT RESPONSIBLE FOR THE CONTENT OF ARTICLES SUBMITTED FOR PUBLICATION. ALL ARTICLES ARE SUBJECT FOR EDITING AND/OR REJECTION BASED ON CONTENT.

Houston

live. work. play. stay.

Houston has it all! With over 5,000 restaurants, golf 365 days a year, world-class shopping, nationally renowned museum and theater districts, cruising and the beach just a short drive away, there's something fun for everyone!

Click: www.VisitHoustonTexas.com

Call: 1-800-4HOUSTON



Chapter Meeting • Thursday, August 23, 2007 • 11:00 a.m.

The Accident Zone: Get the 411 on the 911

With each meeting or event, we strive for perfection. However, lurking in a ballroom full of guests lies the inevitable: the medical emergency. Medical emergencies are inescapable in the meetings and events industry. Choking, bleeding, broken bones and childbirth are just a few emergencies a planner may be called upon to handle.

Ask yourself:

How prepared are you?

Does your organization have an onsite medical emergency plan?

Have you included appropriate language in your vendor contracts to address emergencies?

What matters is how prepared the planner, facility and vendors are should such issues arise. This fun and educational program will address emergency preparedness and response from a business and medical perspective. It will identify the training, tools and equipment you must possess to respond to medical emergencies that may occur at meetings including individual emergencies, severe injuries and other situations.

You will learn:

- ◆ How to recognize the most common medical emergencies and their most appropriate responses
- ◆ Identify gaps in your emergency preparedness plans, equipment and training
- ◆ How to integrate emergency preparedness, management and response practices into the meeting planning process
- ◆ Identify the venue and planners role in seeking care
- ◆ Evaluate the business case for medical emergency preparedness

Host Facility

The Adolphus Hotel

A beautiful lady with a past requests the pleasure of your company. She is The Adolphus Hotel, the grande dame of grand hotels, a unique creation of fortune, flamboyance and fate. It was in 1912 when beer baron Adolphus Busch chose to honor his adopted city with a new hotel...21 stories of unabashed baroque. The Adolphus Dallas hotel ushered in a grand new era of sophisticated Dallas lodging.

Steeped in tradition and alive with Texas Southern charm, the accommodations surround guests with a sense of heritage and privilege. All of the 422 guestrooms, including 17 suites, have been beautifully restored and are appointed with distinctive touches. The Adolphus hotel offers 22 meeting rooms with over 24,000 square feet of flexible convention or meeting space, including the 5,300 square foot Grand Ballroom.

Boasting the graceful splendor of a European manor located in the heart of downtown Dallas, enjoy fine dining at The French Room, browse the art collection within the hotel or venture out for world-class shopping, museums and entertainment. By offering a unique combination of location, distinction, and soul, The Adolphus hotel has remained a legend in Dallas lodging. Discover this inspired historic legend for yourself and see how utterly elegant the world can be.

DIRECTIONS

FROM THE NORTH: Central Expressway to Waco/I-35 exit (Woodall Rogers). Woodall Rogers to Field Street exit. To Griffin. To Commerce and turn left. Follow to intersection of Field/Commerce.

FROM THE SOUTH: I-45 exit Main Street. Left on Griffin. Left on Commerce. Follow to intersection of Field/Commerce.

FROM THE EAST: I-20 to Dallas Highway 80. 80 merges into I-30. I-30 to Highway 75 North. Exit Main/Elm. Choose Elm Street. To Commerce and turn left. Follow to intersection of Field/Commerce.

FROM THE WEST: I-30 to North I-35E. Exit Commerce and Reunion. Follow to intersection of Field/Commerce.

The Accident Zone: Get the 411 on the 911

Thursday, August 23, 2007

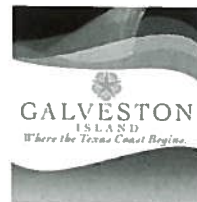
The Adolphus Hotel

1321 Commerce Street • Dallas, TX 75202

Phone: (214) 742-8200

www.hoteladolphus.com

Sponsored by
Galveston Island CVB



- 11:00 am - 11:30 am Chapter Orientation
- 11:30 am - 12:00 pm Registration & Reception
- 12:00 pm - 1:30 pm Luncheon and Program

Complimentary Valet Parking

Advanced Member Price	\$38.00
Advanced Guest Price	\$43.00
Onsite Price	\$48.00

(Walk-ins will be placed on a wait list on-site. Seating is not guaranteed after the guarantee cut-off - Monday 2:00 p.m.)

R.S.V.P. ONLINE

by 2:00 p.m., Monday, August 20th

Go to the "Events" section at www.mpidfw.org

July Meeting Chapter Partners

Please salute the following companies and individuals for their contributions to the meeting.

Host Facility

Hilton Anatole Hotel
Marc Messina

Monthly Meeting Sponsor

El Monte Sagrado Living Resort & Spa
Penni LeRoy

Guest Speaker

James Parker International
James Parker

Décor

Edwards Design
Don Edwards

Photography

J.Woods Custom Photography
Jim Woods

COMMITTEE MEMBERS

O.D. O'Donnell (Chair)
Paige Braun
Bitsy Burns, CMP
Gloria Ford
Carrie Elder, CMP
Suzanne Crim
Bill Reeser, CMP
Bedford Wynne



Our guest speaker, James Parker, shared ideas to enrich work habits in his usual humorous demeanor.

In order to get the most out of your membership, it is imperative to get involved. Just like a bank account....."If you don't put anything in, you can't take anything out." What better time to look over what the chapter has to offer and choose the committee that is just right for you to lend your talent and time.

The new administrative year for the D/FW chapter got off to an exciting start with our July program held at the Hilton Anatole in downtown Dallas. Even though the hotel is undergoing massive remodeling, the hotel and staff didn't miss a beat. Under the caring eye of Catherine New (Catering Sales Manager) every concern and request was taken care of.

MPI D/FW Chapter 2007-2008 president Nancey Hernandez, CMP kicked off the program by announcing her theme for the Chapter year, "Partnerships For A Lifetime". After honoring our July Sponsor "The Kessler Group" and our Host Facility, Hilton Anatole Hotel, it was time to honor our Circle of Commitment Pin Winners for 5 and 10 years of dedicated service. A total of 56 chapter members will receive their service pins for the 5 & 10 year category.

Our guest speaker, James Parker, was next on the program. He was quite dynamic and humorous with his presentation "Making It Happen: Fresh Work Habits for A radically Changing World."

After Mr. Parker's presentation, it was time to award the 15, 20, 25 and 30 year service pins. Yes I said 30 year Ms Ellen Beckert, the only member this year eligible to receive her 30 year pin, was up in the friendly skies on her way to Canada for the MPI convention. We had a total of twenty-one 15 and 20 year recipients. Afterwards O.D. O'Donnell made a special presentation of the 25 year pins to Suzanne Buyck, CMP and Latrelle Sma CMP. With a class of 80 service award pins it is easy to see why the MPI D/FW Chapter has been a leading chapter in all of MPI for so many years. 🌐

July Meeting Highlights

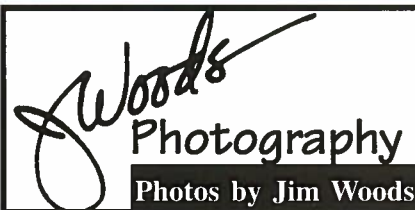
"Getting The Most Out Of Your Membership by Getting Involved"
by O.D. O'Donnell

July's meeting was not only about honoring the 2006-07 Board of Directors and the start of the new Board of Directors for 2007-08, the meeting was also about honoring all of our membership and recruiting members to serve on the various committees.

During the reception, members were able to mix and mingle among the committee tables arranged to display the advantages of being on various committees. Everyone knows that the committee level is where the real work is done that makes the chapter successful! Committee involvement also allows members to get the most out of their membership by building relationships through working with others as part of a team with common goals.



During the reception, each department within the chapter visited with members about committee involvement. Her Carrie Elder, CMP, VP of Membership shares recruiting information.



Thank you to our July program sponsor, El Monte Sagrado!



July Program Committee (left to right): Suzanne Crim (Bus Bank), Gloria Ford (Radisson Richardson), Lisa Flick (Creative Cuisine), Leah Belasco (Independent) and Charlene O.D. O'Donnell (Nightlife Talent & Panache)

WORLD EDUCATION CONGRESS - a la Montreal!



Sue Fry

by Sue Fry

The city of Quebec is beautiful! I took the city tour and even got to see where Celine Deon got married! Love that French, too. What a romantic language. Montreal truly rolled out the red carpet.

The WEC Conference focused on global strategies and connectivity. The vision was stated by the new president Angie Pfeifer, early on; Evolve (from an association to a global community), Re-imagine (the business relationship with chapters), Elevate (member conversation and experiences), and Build (a great organization). It was a theme that carried throughout the conference.

The education sessions were terrific. I was amazed at the turnout for the Meetings Industry Town Hall on Climate Change - "Greening Meetings". - Just last year ten people attended this type of session. This year there was standing room only, massive discussion, many ideas, and lots of press. Seeing the hotels get on board and our industry having in depth discussions was so encouraging.

As always, that techno-geek James Spellos was a hit! Waiting room only! Couldn't get into "Googlicious"! I swear he's cuter than Fergie! The Gen-Y generation and working with the "Wiki's" was well represented too. I was feeling quite ancient, but, I know that the trend is here to stay. E-mail is over. Blog is here! Negotiating, BlackBerry tricks, Ethics in business, Procurement, Smart Marketing - so many sessions, so little time.

The tradeshow was fast and fabulous. I was on the floor both days and only had time to stop at the booths that I knew might be of benefit to me, and still did not make it through them all.

Reconnecting with old friends and clients was great. Watching my long time mentor Bob Walker with AVW Telav win International Supplier of the Year was icing on the cake.

Creating new connections was essential to Be Seen, LLC as a business. After 17 years as a member of MPI, the connections only reaffirm my ROI - it's you, my industry friends.

The JPA Scholarship fund gave me this fine opportunity to attend WEC 2007. Please support Jayna Monroe, the MPI D/FW Chapter JPA Chair, in her efforts to raise monies this year!

Thank you to Gail Le Maire, who had the forethought to introduce the JPA Scholarship program, to Jan Pollard, for whom the program is named after, to Carol Benavidez, CMP for the approval of JPA funds and to the each member in the chapter for their continued support of this monumental educational award.

For those of you to whom JPA is simply a red dot on your name tag at each meeting every time you give so generously toward the scholarship funds...I am the result of your efforts and I thank you from the bottom of my heart for the honor of being able to attend WEC this year! 🌐



Jayna Monroe

JPA and CMP

by Jayna Monroe

I wonder how many of you reading this article are aware of what JPA is and how valuable it is for our members!

For a long time, I wasn't...

JPA meant an opportunity to pay a little money each month to enter a raffle and win a great prize. I had a vague idea that the money went to do something good for our members, but I really didn't know what JPA stood for.

Now I do...and now I am both chair of the JPA committee and a JPA Scholarship award recipient.

JPA, the Jan Pollard Award for Professional Growth, is a program BY our chapter FOR our chapter. The purpose of JPA is to award scholarships to members in good standing so that they can take advantage of opportunities for professional education and development. The monies for this are raised by the committee at each monthly meeting by offering prizes that the committee obtains by donations from members and sponsors.

JPA funds may be used for MPI chapter educational programs, attendance at PEC and WEC - and towards your CMP. I applied for and received a JPA Scholarship to cover the cost of the CMP exam.

I took my CMP exam on July 28th. (None of my college professors ever came up with a test that fiendish!) I hope I passed but I have no idea whether I did or not. It is six weeks between the exam and notification. Those of you who have your CMP, I salute you! You have been through the wars. Those of you who haven't taken the exam yet, be warned. There can be dragons out there! But on the other hand....

Studying for my CMP exam was a joy. Even as I struggled to memorize function room set-ups and understand the difference between DSL, T1 and T3 lines, I gained such respect for our profession and the depth and breadth of knowledge it takes to do it well. Looking back over the months of Study Group that began in January, I am amazed at how much I have learned: from the manuals, from the CMPs who taught each session and from my fellow candidates. None of that knowledge will be wasted...well, maybe the T1 lines.

Next time you attend a monthly luncheon and you see a JPA Committee member heading your way with the Tiffany blue bag, give generously and give with pride.

Sure, you may win a great prize. More importantly, however, you win the opportunity to help a fellow member further his/her professional growth. And who knows, it might even be you! 🌐

Each Person Matters

by M.T. Hickman, CMP, CTP
MPI D/FW Multicultural Initiative Committee Chair


I recently found myself in a difficult situation. Perhaps this has happened to you. I was planning a semi-annual meeting and after checking numerous dates, I thought I found the perfect one. When the date was distributed to some of the attendees, it was called to my attention that the meeting would fall on a major non-Christian holiday.

My first reaction was anger: How could I, a leader with the Multicultural Committee, make this mistake? More importantly, what was I going to do about it? I could argue that the date would only affect a few of the attendees, so why should I have to make a change? This date is not a recognized American national holiday, so why bother? If you were in my place, what would you do?

I discussed this dilemma with a colleague who said that, as a minority, she was always placed in this situation. We work within a system that says the majority rules and as a member of a minority she's often the one who faces the choice of being left out or compromising her values and beliefs. I respect this person and thought of what a disservice it would be to her and the entire project for me to leave her out of the meeting. This was a holiday that she observed and according to religious practices, could not participate in any event on that day.

We all know that it often takes only one person to help find the solution to a problem. And that one contribution can make all the difference to the success of an event.

My situation is a parallel to what is happening with MPI International. The European PEC was schedule over the Jewish holiday of Passover. Two great blogs discussing this issue and diversity in MPI in general are "Why Can't We All get Along" and "MPI and Diversity." They can be found on the international MPI web page. Go to the Community Connections page and click on "View all blog postings" to find them, and give your opinion.

By the way...I did change the date and I'm glad that I did. 

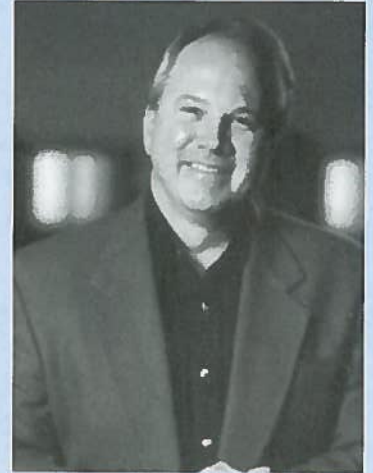


M.T. Hickman, CMP, CTP

CONGRATULATIONS

Once again one of our outstanding, long-term chapter members did us proud at WEC!

We congratulate Bob Walker (AVW-Telav) on winning International Supplier of the Year at WEC, which took place in late July in Montreal, Canada!



Bob Walker



Nature

has been hard at work

here for thousands of years.

Imagine what your company
can accomplish in a few days.

This is fertile soil.

866.605.4260



The Woodlands
RESORT & CONFERENCE CENTER
Just 30 minutes north of Houston

Take a fresh look – www.woodlandsresort.com

60,000 sq ft of meeting space | 440 guest rooms | 32 years of meeting success



M.T. Hickman, CMP, CTP

Richland College Offers New Course in Meeting Security


In response to the continually evolving situation with world security, as well as our increased awareness of potential natural disasters, the Richland College Travel, Exposition and Meeting Management program is introducing a unique, exciting and very timely new course in its Fall 2007 schedule: **Conducting Secure Meetings and Events**. In addition to creating their own Crises Management Plans, students in this class will be the first group to see Red Phone™ in action.

Red Phone™ is a brand new Emergency Notification System capable of sending out thousands of emergency voice or text messages within minutes with a single call. It will also create a record of which messages have been retrieved.

Kevin Mellott, renowned security expert, President of ERASE Enterprises LLC, and frequent speaker at industry meetings, will be teaching this class.

Beginning in September, this class will include on-line work as well as classroom time. Class meetings will be held on Friday September 7, 6:00 - 10 p.m.; Saturday, September 8, 8:30 a.m. - 5:30 p.m.; Sunday, September 9, 1:00 - 5:00 p.m.; Friday September 21, 6:00 - 10 p.m.; Saturday, September 22, 8:30 a.m. - 5:30 p.m.; and Sunday, September 23, 1:00 - 5:00 p.m.

The cost for Dallas County residents is \$117 per class plus the cost of any textbooks. Classes can be taken for credit or non credit and may be applied to industry certifications including the CMP, as well as the Richland College Certificate in Meetings and Associates of Applied Science Degree.

For more information, Contact M.T. Hickman, CMP, TEMM Program Coordinator at 972-238-6097 or e-mail mthickman@dcccd.edu to RSVP or to schedule a meeting. You may also visit <http://www.rlc.dcccd.edu/travel/index.htm> for more information about the TEMM program. A complete schedule of TEMM classes being offered this fall is available at: <http://www.rlc.dcccd.edu/sched/fall/subject/Travel-Exposition-Meeting-Management.cfm> 



Kim Reynolds, CMP, CMM

July Chapter Charities Committee

by Kim Reynolds, CMP, CMM

On July 13th, members of the MPI D/FW Chapter Charity Relations Committee and Member sponsors got together to provide dinner for the families of seriously ill children who are receiving treatment at local Dallas area hospitals.

As a home-away-from-home for these families, they rely on the assistance of others during this difficult time.

Residents were treated to a delicious dinner dished up at the Ronald McDonald House by chapter volunteers and gourmet food donated by Creative Cuisine, AVW TELAV, Hilton Hotels, Marriott Las Colinas, Omni Mandalay and Cowboys Golf Club.



Kelly Roche, Kelley Barthelemy, Rebecca May, Molly Kristal, LaDenna Franks



La Denna Franks, Kelley Barthelemy, Molly Kristal, Rebecca May

August Chapter Charities

HEAD START of Greater Dallas, Inc. (HSGD) is the Chapter Charity project for August 2007.

About Head Start: Since 1967, more than 55,000 children have entered school ready to achieve academic success by receiving free comprehensive educational, social, medical, dental and mental health services, as well as two-thirds of their daily nutrition. Studies show that children who have participated in the Head Start program are more likely to remain in school, avoid teenage pregnancy and involvement in juvenile crime, and find meaningful employment later in life.

You can help by bringing the following Pre- K School Supplies items to the August 23, 2007 MPI Monthly Meeting.

A table will be set up to receive the following donations:

- Crayons
- Pencils
- Copy Paper
- Glue
- Construction Paper
- Safety Scissors
- Markers
- Colored Pencils

Are You Honing Your Leadership Skills?

by David Gabri
President and CEO, Associated Luxury Hotels

It is probably safe to say that most people would be receptive to being considered a "leader." Not everyone strives to be in a leadership position, but being a "leader" can take several forms - whether it is leading employees, co-workers, associates, or teammates, or even specific programs. But what is it that makes someone a "leader"?

It's not an easy answer. According to a recent article published in Harvard Business Review, leadership scholars have conducted more than 1,000 studies to identify the styles, characteristics or personality traits of great leaders. The article's authors Bill George, Peter Sims, Andrew N. McLean and Diana Mayer say that none of these studies has produced a clear profile of the ideal leader - which is a good thing.

Genuine, Consistent & With A Passion

I agree with their assessment that if any of the studies produced a "cookie-cutter leadership style," then people would always try to copy that. This would not be very effective because it would not be authentic. People follow leaders who are genuine, consistent, and have a passion, and that doesn't happen if you are trying to act like someone you're not.

Through all of the leadership studies, it seems evident that you don't need to be born with specific characteristics to become a leader, but that leadership emerges from self-motivation, real-world experiences, and a passion for what you do, and when to do it.

Young & Rubicam Chairman and CEO Ann Fudge, quoted in that Harvard Business Review article says, "All of us have the spark of leadership in us, whether it is in business, in government, or as a nonprofit volunteer. The challenge is to understand ourselves well enough to discover where we can use our leadership gifts to serve others."

Enhancing Your Skills

So how do you enhance your leadership skills? Leslie Kossoff, a leading organizational thinker and consultant, recommends that you seek input from your employees, internal and external customers, and suppliers about their needs in your relationship.


"Find out what more and what else you can do to create success (for them)," she advises, and this in turn will help "build a collaborative culture based on where you're going."

While it may not come to mind immediately when discussing leadership skills, networking can also be an important component.

What may be surprising is that networking can take many forms, according to Herminia Ibarra and Mark Hunter in their book, *How Leaders Create and Use Networks*. This includes "operational networking," which is focused on doing one's assigned tasks more effectively; "personal networking," which brings together "kindred spirits" to help with personal advancement; and "strategic networking," which uses networking to advance business goals.

Take a step back to see if you're taking advantage of all of the networking opportunities around you to build your leadership skills.

ALHI recently conducted its annual Executive Women in Leadership Conference at Loews Coronado Bay Resort and Spa in San Diego, CA, providing an opportunity for women in senior-level leadership positions in the hospitality and meetings industries to share goals and challenges. Interestingly, all agreed "networking" is one of their top means to enhance their skills. It's no wonder that all of these executives are at the top of their field as they share and continue to seek out ways to hone their already noteworthy leadership skills and experience with others.

In summary, leadership is a choice. It requires you to listen, visualize a goal or opportunity, and then effectively communicate and execute it with passion. Motivating people to move together toward a mutual goal is the ultimate reward - and well worth the effort! 

David Gabri is president and CEO of Associated Luxury Hotels International, which has the national sales responsibilities to the meetings industry for its membership of over 100 premier Four- and Five-Diamond/ Star quality hotels and resorts worldwide.



The Accident Zone: get the 411 on the 911



Test Your Medical Emergency Knowledge:

- 1-At a luncheon meeting, a man begins choking. You should immediately stand him up and slap him on the back to try to dislodge the object.
- 2-When performing the Heimlich maneuver, you should always place your hands on the victim's breastbone or lower ribcage.
- 3-On the dance floor, a woman falls and sprains her ankle. You should immediately sit her down and apply ice directly to the skin to reduce swelling.
- 4-While decorating, a volunteer cuts their hand and begins bleeding excessively. The first thing you should do is try to sterilize the cut area?
- 5-A woman goes into labor in the middle of a tradeshow. You should immediately lie her down and instruct her to begin quick, short breaths to help ease discomfort.

If you answered YES to any of the questions, you should immediately run to your computer, log onto www.mpidfw.org, register for the August 23rd meeting and reserve a front row seat because the answer to all of the above questions is FALSE! See you August 23rd!

MEMBERSHIP NEWS



Carrie Elder, CMP

I Challenge You...

by Carrie Elder, CMP
VP of Membership

To make a difference in this chapter. Did you know that our beloved D/FW Chapter is the 6th largest MPI chapter in the world? Did you know that we currently have 954 chapter members? Recruiting new members is a vital component of ensuring that D/FW remains in the forefront of the MPI chapters,

so please help us reach our goal of having 1,000+ members for the first time in this chapter's history. What better way to cap off the 30th anniversary that we just celebrated at the June gala?

If you are a current D/FW Chapter member, each new member that you recruit qualifies you to receive a \$50 AMEX Gift Cheque. Once a new member's application is processed and approved at MPI International, the D/FW Chapter will be notified. Once that notification occurs, the Membership Committee will contact each new member to ascertain if they were recruited by a current D/FW Chapter Member. If a new member notes that you recruited them, then you are then eligible to receive a \$50 AMEX Gift Cheque courtesy of the Membership Committee. What an easy way to make some extra money! You may earn up to three AMEX Gift Cheques during the August 1 - December 31, 2007 recruitment promotion. The only stipulations are that student, renewal or reinstated memberships don't qualify as a new member recruitment, you must be a current D/FW Chapter member to participate in this promotion and only one person can receive recruiting credit on each new member the chapter receives. Speaking of student memberships, look for information on our exciting Adopt a Student campaign to arrive in the coming months!

Together, let's make a difference in this chapter. 



Leah Belasco
'Grapevine' Columnist

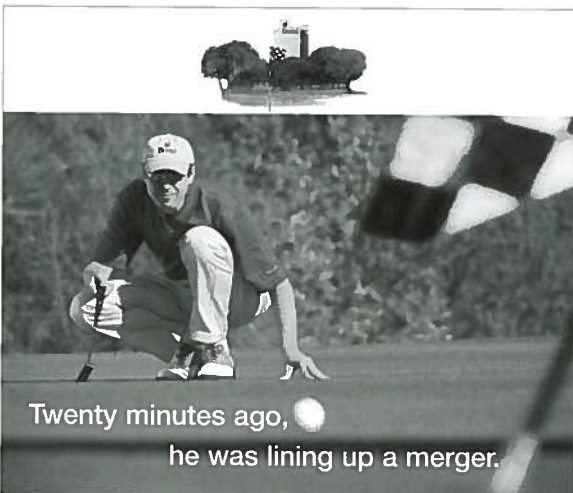
Heard it through the Grapevine!

Leah Belasco has a new phone number...and operators are standing by to hear your latest news, moves, promotions, career changes and family milestones! **New phone number: 214-441-3309**

Tara Judd has recently made a career change. She is now full-time with *United Way of Metropolitan Dallas, Inc.* in the position of Senior Director of Strategic Events and Sponsorships.

After more than 9 years with *KPMG LLP*, **Evya Richards, CMP**, recently left and has joined *The Energy Council* as a Meeting Planner.


To submit member news and information, contact:
Leah Belasco • 214-441-3309



Twenty minutes ago,
he was lining up a merger.

Only one resort combines 4-star amenities with 4-star golf in Fort Worth – the Doral Tesoro. With 22,000 feet of meeting space indoors and 5,000 outdoors, it's the ideal setting for your next event.

www.DoralTesoro.com
817.961.0800



New Kids on the Block

Welcome to Our Newest Members!

We are delighted to welcome our newest chapter members. We invite you all to attend our monthly chapter meetings in an effort to help further your desire for education and networking. For more information on chapter events, please visit our website at www.mpidfw.org.

Kelly Ball.....	Helmsbriscoe
Marie E. Beavers.....	Wyndham Hotels & Resorts
Christina Borrego.....	Dallas/Addison Marriott Quorum
Liz Brewton.....	Hilton Dallas Lincoln Center
Lisa A. Carpenter.....	Frisco Convention & Visitors Bureau
Paula Anita Drummony.....	Embassy Suites Outdoor World Hotel
Holly L. Gordon.....	
Julie Greer.....	
Erika Andrade Guerrero.....	Dallas Marriott Las Colinas
Becky A. Hilton.....	VHA Inc.
Jill Joslin.....	Sports and Entertainment Access
Misti Moody.....	Wyndham Hotel Group
Dana Munn.....	Lockheed Martin Aeronautics
Sue Ann Murray.....	EDU Corp Training & Consulting Inc
Elaine Perez.....	MetaSwitch
Megan Anne Robinson.....	Ducky-Bob's Event Specialists
Melvin Shane.....	Sega Gameworks
Tricia L. Smith.....	Bear Com
Becky Stegel.....	J+S Audio Visual, Inc.
Jamie L. Williams.....	
Kathy Wooten.....	Omni Hotels



MPI

www.mpidfw.org

Dallas/Fort Worth Chapter
PMB 259

7750 North MacArthur Blvd., Suite 120
Irving, TX 75063-7501

RETURN SERVICE REQUESTED



WHERE BUSINESS AND PLEASURE MEET.

Need to escape the humdrum of the everyday? Book your next corporate/client meeting or business conference where work and play come together. Here you'll find flexible meeting space, as well as the first-class amenities and entertainment for a convenient, comfortable and memorable stay. Meeting Planners, the more you book, the more rewards you and your group will receive. Visit ldcasino.com or call 866.370.7222 to get more information.



GAMBLING PROBLEM? PLEASE CALL 1.800.522.4700