



CURRENT

DEFINING THE POWER OF MEETINGS™

Dallas/Fort Worth Chapter

June 2007

Chapter of the Year
1989 ★ 1990 ★ 1994
1996 ★ 2001

Inside

- D/FW Chapter Timeline.....2
- Celebrating 30 Years.....3
- Chapter Award Nominees....4
- June Awards Gala Info.....5
- Swing for a Cause Recap.....6
- May Meeting Highlights.....8
- Education News.....9
- DMC Trends.....10
- Membership News.....11

**For Up-to-date
Chapter Information
& Calendar of Events**

**Log on to
www.mpidfw.org**

Vision Statement

To be the pivotal force in positioning meetings and events as key strategic components of an organization's success.

Mission Statement

To be recognized as the leading global membership community to shaping and defining the meeting and event industry.

Hail to the Chief



Interact, Inspire, Innovate...

1. What's the most important thing about being chapter president that the average member doesn't know?

Being chapter president is about being responsible for the entire chapter. I am the guide for our board of directors and chapter members. At the beginning of my presidential year, I set goals for myself, as well as the chapter. In order to achieve these goals, the board and committees had to have similar goals. Building consensus is key to the success in accomplishing these goals.

2. What's the most important leadership lesson you've learned this year?

Sometimes making hard decisions are not always very popular. When people don't agree and are very vocal, it is very important to listen carefully. Our chapter members care very much about the success of our chapter. Working together will insure the continued success of the Dallas Fort Worth Chapter.

3. What chapter accomplishments are you most proud of this year?

During this year, I have seen more members get involved and attend our chapter programs. Producing quality education to our members is our top priority. This year we had record attendance at most of our programs. I am very proud of our education team headed up by Tony Cummings, CMP - Vice President of Education.

This year our sponsorship program is a success story. Terri White, Director of Strategic Alliances, set out this year to reconnect with our sponsors. She solicited record sponsorship dollars of over \$50,000. Terri's commitment to turn our financial status around, while insuring our sponsors received their maximum return on investment, is greatly appreciated.

4. What was the most difficult aspect of your year as president?

I think the most different aspect of my year has been to serve our chapter by meeting our members' expectations. We have passionate members which is a great thing. I wanted to let everyone have a voice. At the end of the day, hard decisions needed to be made for the overall good of our chapter.

5. What have you learned about our industry as a whole through your tenure as president?

Even though I have been in the industry for over 20 years, there are always things to learn about our industry. Today, we have so much technology to help us do our jobs; however, we are expected to do everything so much faster. I have implemented some of the APEX tools and set standards so we aren't duplicating our efforts. APEX is one of the best things that have happened in our industry for a long time.


6. Any advice you would give to incoming president Nancey Hernandez?

Nancey Hernandez will be a great president for our chapter. We have worked together as a team this year, and she has a great team for the coming year.

7. What is something people don't know about you?

I used to do technical rock climbing in the mountains of Colorado. What was I thinking!?!

8. What makes you laugh?

My wonderful grandchildren make me laugh. They are the light of my life. The joy of being around them is so wonderful. I am blessed. 

DALLAS/FT. WORTH CHAPTER



DEFINING THE POWER OF MEETINGS

President

Sally Goldesberry, CMP, CMM
Society of Petroleum Engineers
972-952-9380

President-Elect

Nancey Hernandez, CMP
Dallas CVB
214-571-1052

Immediate Past President

Tamra Hughston, CMP, CMM
Home Interiors & Gifts Inc
972-695-1361

Vice President of Communications

Stephanie Schroeder
Associated Luxury Hotels
972-312-1153

Vice President of Education

Tony Cummins, CMP
Hotel Resources
214-343-9838

Vice President of Finance

Carol Benavidez, CMP
HelmsBriscoe
972-396-0423

Vice President of Membership

Bedford Wynne
Wynne Sedan & Limousine Group
214-361-6125

BOARD OF DIRECTORS

Director of Leadership Development

Jesh Batra
Adolphus Hotel
214-651-3628

Director of Monthly Programs

Carole May, CTC, CMP
817-732-1704

Director of Professional Development

Kim Reynolds, CMP, CMM
Alliance Data Systems
972-348-5265

Director of Special Events

Laura Jordan, CMP
Wyndham Worldwide
214-863-1151

Director of Strategic Alliances

Terri White
Intercontinental Hotels Group
972-335-8487

Director of Recruitment

Carrie Elder, CMP
Texas Society of CPA's
972-687-8663

Director of Member Care

Patricia Royal, CMP
Winstead Sechrest & Minick PC
214-745-5343

Director of PR/Marketing

Lawana Gladney, PhD
Gladney & Associates
972-889-9656



Steven G. Foster, CMP

D/FW Chapter Timeline

by Steven G. Foster, CMP
Managing Partner
Circle R Ranch
1999-2000 MPI D/FW Chapter President

This is a landmark year for MPI D/FW - the chapter was first chartered on June 22, 1977 and at this year's Annual Awards Gala, June 28th at the Marriott Las Colinas, we will celebrate and recognize the outstanding contributions from our amazing 30-year history.

Here's a sampling of our Chapter History for those who are new to MPI, as well as those of us old enough to remember when:

1977-1980

June 22, 1977: Metroplex Chapter chartered in 1977 with Four Members. Ron Trammell (Mary Kay) was the first President.

November 12, 1979: The 1st issue of the chapter newsletter, "Current" is published. The Chapter has 115 members and chapter meetings cost \$ 7.50.

1981-1990

1981: Chapter named is revised from Metroplex Chapter to Dallas/Fort Worth Chapter.

During presidency of Harmon Hodge (1981-1982) the first regularly-scheduled monthly chapter board meetings are held. Membership is at 162. Chapter monthly luncheon registration fee was \$ 12.00 and dinner registration fee was \$ 15.00.

June 1983: A record turnout of 128 attended the monthly meeting at the Registry Hotel. Chapter breaks 200-member threshold.

1985: MPI D/FW Chapter develops program to recognize chapter Planner & Supplier of the Year. Its first recipients are Sally Gibbons (Supplier) and Greg Elam (Planner).

February 1986: D/FW membership is 285. Membership roster is computerized for the first time.

August 11, 1986: MPI relocates headquarters to Dallas from Middletown Ohio. In 1987, the association's name changes from Meeting Planners International to Meeting Professionals International.

July 1987: Chapter hires its first paid Chapter Administrator.

June 1989: MPI D/FW wins its first Chapter of the Year award at MPI Conference in Orlando.

March 1990: D/FW Chapter hits record of 400 members.

1991-2000

March 1991: 1st Annual *Give Kids the World* Gala Charity Ball raised \$ 17,500 for MPI's official charity, the largest donation ever given by a single chapter of MPI. The chapter also raised more than \$5,400.00 for *Love for Kids* by selling specially created Christmas Cards.

July 1992: Membership in D/FW is 475. Average attendance at the monthly Chapter meetings is 197.

July 1994: D/FW chapter member Bill Boyd, CMP (Sunbelt Motivation) is named President of MPI International. MPI D/FW is named Chapter of the Year at the 1994 PEC.

Fall 1994: MPI D/FW, in Partnership with Richland Community College, begins classes toward a two-year Associates Degree program in Meetings Management through the Dallas Community College District.

January 1995: MPI PEC is held in Dallas. The *Current* is named Best Overall for Editorial & Design among chapter newsletters.

July 1995: Chapter members Sherri Cook, CMP and Mollie S. Wallace, CMP are the first recipients of MPI's *Tomorrow's Leader Award*, presented at the WEC in Chicago. Chapter membership is 603.

October 1996: Chapter hosts 20 members of MPI Italia at Garrett Creek Ranch. Chapter membership is 701.

February 1997: Chapter members lead the charge at the Texas Travel Tourism & Meetings Industry Legislative Action Day, a first-time coordinated effort among 14 industry associations to lobby Texas Legislature on issues affecting the meetings & event industry in Texas. Governor George W. Bush proclaims Feb. 26, 1997 as (Texas Travel Tourism & Meetings Industry Day.)

continues page 3

by O.D. O'Donnell

I don't know about you, but I probably won't be here when the D/FW Chapter celebrates the next 30 years so I plan on going to this one. There is a lot of History and fond memories that have gone into the last 30 years, and it's the responsibility of all of us to remember our past and how we got where we are.

Do you ever wonder what is the most members that have ever belonged to the D/FW Chapter? When you realize that the chapter was chartered on June 22nd, 1977 with 4 members you can appreciate how everyone felt in June 2001 when we reached a grand total of 975 members, which of course was the highest number we have ever had in our history. During the 2000-2001 year the chapter average attendance at our monthly meetings was 226.16

Join us for a night of celebration and reflection as we stroll down memory lane. 

D/FW Chapter Timeline... *continued from page 2*

June 1997: MPI D/FW marks its 20th anniversary. Gregory Pynes is chapter president. The chapter awards its first *Circle of Commitment* pins to 178 members for service of 5, 10, 15, 20 and 25 years.

August 1998: Eric Johnson, CMM, CMP becomes the first D/FW MPI Chapter member to achieve the Certification in Meeting Management "CMM" designation. The MPI Kids Charity Ball 1998 raises \$ 153,266. Chapter membership is 803.

November 1998: Randie Charnes is named Chapter Administrator.

March 1999: MPI D/FW participates in Pilot program for new educational series "Platinum Series".

August 1999: MPI DFW introduces the chapter Web-site - www.mpidfw.org

January 2000: MPI D/FW greets the New Millennium with 800 members. A new look for the "Current" debuts. Steven G. Foster, CMP is Chapter President.

February 2000: Chapter holds its first *Supplier Showcase* with attracting 440 attendees.

2001-2007


January 2001: D/FW Chapter wins MPI's "Award of Excellence for Marketing/Communications. Membership reaches an all-time high of 910.

January 2002: MPI D/FW is named "*Chapter of the Year*" for the fifth time in its history at PEC in Hawaii.

August 2002: MPI D/FW dominates International awards at WEC in Toronto. Dana Nickerson Rhoden, CMP, CMM won the International Planner of the Year Award. Steven G. Foster, CMP won the Marion N. Kershner Memorial Chapter Leader Award. Dvorah Evans, CMP won the Tomorrow's Leader of MPI Award.

May 2003: Chapter member Ted Olson receives a "Lifetime Achievement" award from MPI for his 30 years of service. Olson was one of 3 original members who signed the original MPI Charter.

July 2006: MPI's International's World Education Congress was held in Dallas with record breaking attendance. With 3,461 attendees it was the largest event in MPI's history beating both the 2001 WEC in Las Vegas and the 2005 WEC in Miami. International awards were presented to Sally Goldesberry, CMP, CMM for Planner of the Year and Betty Garrett, CMP for the Marion N. Kershner Memorial Chapter Leader Award.

You'll find out more about our tremendous history, and the accomplishments from this year which will be added to our Chapter Legacy, at this month's Awards Gala. Plan on joining your fellow chapter members and colleagues in discovering how **YOU** can contribute to the Legacy of our great chapter. 



DEFINING THE POWER OF MEETINGS™

Founded in 1972, Meeting Professionals International, with nearly 20,000 members in 60 countries and four chapters in formation, is the leading global community committed to shaping and defining the future of the meeting and event industry. For more information, visit www.mpiweb.org.

CURRENT

Managing Editor
Patty Markley, CMP
DMM Group
(972) 233-8524
patty@groupdmm.com

Newsletter Coordinator/Designer
Dana Conley
PDQ Results Printing
972-680-9410
pdq-results@prodigy.net

Newsletter Advertising Sales
Matthew Massengale, DMCP
EDS
972-605-6418
matthew.massengale@eds.com

Contributing Columnists

Heard It Through the Grapevine
Leah Belasco
972-818-4811

MPI Advancing Women
Tara Judd
Imagine Events Inc.

Chapter Charity Relations
Denise Howieson, CMP
Zoom 7, Inc.

Photographer
Jim Woods
J Woods Custom Photography

MPI Dallas/Fort Worth Chapter Office
Dallas/Fort Worth Chapter, PMB 259
7750 North MacArthur Blvd., Suite 120
Irving, TX 75063-7501
www.mpidfw.org

Chapter Administrator
Randie Charnes
(972) 869-3836 • Fax: (972) 506-7485
info@mpidfw.org

MPI D/FW IS NOT RESPONSIBLE FOR THE CONTENT OF ARTICLES SUBMITTED FOR PUBLICATION. ALL ARTICLES ARE SUBJECT FOR EDITING AND/OR REJECTION BASED ON CONTENT.

2006-2007 CHAPTER AWARD NOMINEES

Planner of the Year Nominees



Marti Fox, CTC, CMP, CMM
Global Goals, Inc.
Member Since 1992



Sherry DeLaGarza, CMP, CMM
MAC Meetings & Events, LLC
Member Since 1997



M.T. Hickman, CMP, CTP
Richland College
Member Since 1992

Supplier of the Year Nominees



Jesh Batra
The Adolphus
Member Since 1988



Nancey Hernandez, CMP
Dallas Convention & Visitors Bureau
Member Since 1995



Linda Sergeant
BBJ Linen
Member Since 1991



Bruce Wolpert, CMP
The Adam's Mark Hotel
Member Since 1995

Rising Star of the Year Nominees



Lisa Flick
Creative Cuisine
Member Since 2004



Neva Lamb
A&H AwardPro
Member Since 2005



Tina Bavemark
Society of Petroleum
Member Since 2006

Chapter Awards Gala • Thursday, June 28, 2007 • 5:30 p.m.

Gala & 30th Anniversary Celebration



Nobody likes an excuse to celebrate better than an MPI member, so mark your calendar now for our 30th Anniversary Celebration!

Break out your favorite cocktail dress or suit and grab a date or guest and let's party like its 1977 (30 years!). This is the opportunity for longtime MPI members and newer members to get together and kick up our heels.

We'll take an entertaining look back at some of the highlights of the DFW chapter of MPI over the past 30 years, as well as this most recent year. The gala would not be complete without presentation of our most prestigious annual awards for Planner of the Year, Supplier of the Year, Suzi Fiveash Award, Rising Star Award, Facility of the Year and Program of the Year. In addition, we will recognize the past Board and install the new Board of Directors for 2007-2008.

Program Committee:

Sally Goldesberry, CMP, CMM, *Society of Petroleum Engineers*; O.D. O'Donnell, *Nightlife Talent/Panache+*; Stephen Foster, CMP, *Circle R Ranch*; Nancey Hernandez, CMP, *Dallas CVB*; Bob Walker, *AVW Telav*; Colleen Rickenbacher, CMP, CSEP, CPC, *Colleen Rickenbacher Inc.*; Bill Reeser, CMP, CTS, *AVW Telav*; Susie Oliver, *Challenge Management Inc.*; Neva Lamb, *A&H AwardPro*; David Gisler, *Freeman Decorating Company*; Linda Sergeant, *BBJ Linen*; Tina Bavemark, *Society of Petroleum Engineers*; Kelly Roche, *Irving CVB*; Paige Braum, *Convention Guides Inc.*; Betty Garrett, CMP, *Garrett Speakers International*; Tracey Smith, CMP, CMM, *Garrett Speakers International*; Carole May, CTC, CMP; Erika Guerrero, *Dallas Marriott Las Colinas*; Jeanine Fisk, *Dallas Marriott Las Colinas*

Host Facility

Dallas Marriott Las Colinas

Overlooking the serenity of Lake Carolyn, in the heart of Las Colinas, is the Las Colinas Marriott; an urban oasis minutes from Dallas. Dine at Bistro Fiera, our waterfront restaurant featuring Mediterranean dining and traditional favorites, or take a gondola ride around the lake. Our premier location places guests within easy access of area airports, entertainment and great shopping.

Our 361 guest rooms, 3 suites are the Marriott "rooms that work" - featuring a laptop friendly work station, two phone lines in each room, high-speed internet access and an ergonomic desk chair. The hotel also features a concierge floor, lounge, indoor pool & hot tub, exercise room, and an outdoor waterfront sun patio. Our main ballroom offers over 10,000 square feet of elegant function space divisible into 8 sections. The ballroom features an 8,000 square foot pre-function area overlooking Lake Carolyn. Four additional Executive boardrooms are also available. Each boardroom features a professional décor, windows, and state of the art audio-visual equipment. The outdoor terrace can also be accessed from the pre-function area and is available for social events on the waterfront.

Gracious Marriott service and amenities, including high-speed internet access, and a comfortable, contemporary decor await!

DIRECTIONS

Dallas/Fort Worth - DFW (1-972-574-8888 - Hotel Direction: 8 mi E)

Driving Directions: Take north exit of DFW Airport to Highway 114 East, exit on O'Connor Road, turn left on O'Connor Blvd, go 1/4 mile to Las Colinas Blvd. Turn left (West). Hotel is 1 block on the right at 223 West Las Colinas Blvd.

Dallas/Love Field - DAL (1-214-670-6073 - Hotel Direction: 7 mi W)

Driving Directions: Exit Airport and go south on Mockingbird Lane to Highway 183, go west on 183 and follow signs to Highway 114. Exit 114 on O'Connor, Go right on O'Connor to Las Colinas Blvd., Turn left on Las Colinas Blvd. (West). Hotel is 1 block on the right.

Chapter Awards Gala & 30th Anniversary Celebration

Thursday, June 28, 2007

Dallas Marriott Las Colinas

223 West Las Colinas Blvd. • Irving, TX 75039

Phone: (972) 831-0000

Sponsored by



Irving Convention and Visitors Bureau



www.visithoustontexas.com

5:30 pm - 6:30 pm Opening Reception

6:30 pm - 9:30 pm Program

Complimentary Valet Parking is Available as well as Self-Park in the Parking Garage

Cocktail Attire. Guests and Dates are Welcome.

Advanced Member Price \$50.00

Advanced Guest Price \$50.00

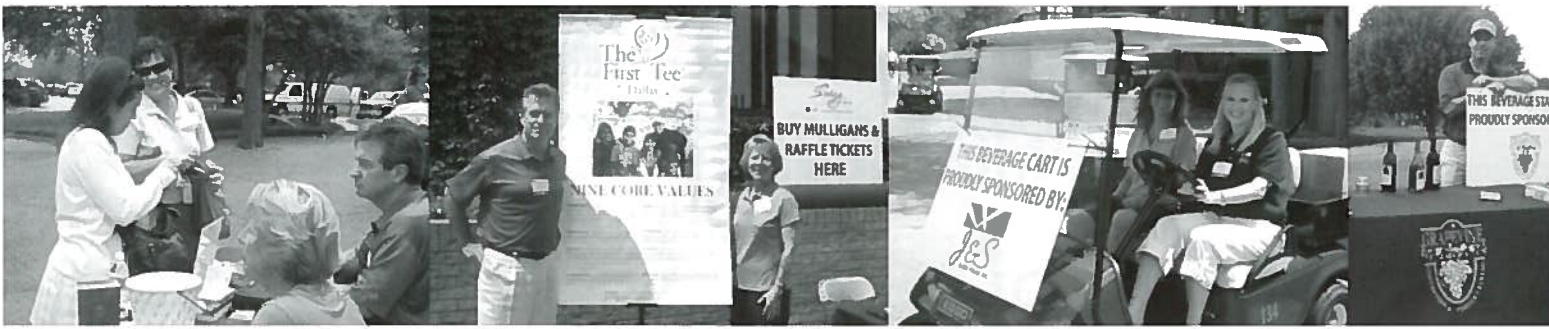
Onsite Price \$65.00

(Walk-ins will be placed on a wait list on-site. Seating is not guaranteed after the guarantee cut-off - Monday 2:00 p.m.)

R.S.V.P. ONLINE

by 2:00 p.m., Monday, June 25th

Go to the "Events" section at www.mpidfw.org



Swing FOR A CAUSE

MPI DALLAS/FORT WORTH CHAPTER

Golf Tournament Recap

by Laura Jordan, CMP

With inclement weather a few days prior, Mother Nature was on our side and April 2nd turned out to be a beautiful day for a golf tournament! The Gleneagles Country Club hosted 99 golfers (MPI members, non-members, friends and friends of friends), education workshop attendees and a fabulous awards celebration.



Education Workshop attendees and amazing golf pros.



▲ **First Place Tournament Winners**
- Greyhound Lines team with
Tournament Chair, Suzanne Crim

Mulligans and Cheat bags were sold to golfers and raffle tickets were sold to all attendees to benefit our charity, **The First Tee of Dallas**, whose mission is to impact the lives of young people by providing learning facilities and educational programs that promote character development and life-enhancing values through the game of golf. \$3,003.00 dollars was raised for this very worthwhile cause!



▲ **Second Place Tournament Winner**
and Fun For All!

Golf Tournament Committee:

Suzanne Crim (Chair), *The BusBank*; Alison Kieckhafer (Co-Chair), *Liquid Productions*; Jayna Monroe, CMP (Education Workshop Chair), *JCM Special Events, Inc.*; Jane Richards (Education Workshop Co-Chair), *Cowboys Golf Club*; Amber George, *Boundless Network*; Angie Nichols, *Studio Movie Grill*; Bruce Wolpert, CMP, *Adam's Mark Hotel Dallas*; Deborah Cohen, *Urban League of Greater Dallas*; Dina Evans, *A&H AwardPro*; Jeanne Feuille, CMP, *Spear One Productions*; Jeri Fuller, *Diamond Star 5 Events*; Jessica Foret, *Lone Star Park at Grand Prairie*; Kelly Roche, *Irving Convention & Visitors Bureau*; Kristy Stephens, *Enterprise Rent-A-Car*; Laura Jordan, CMP, *Wyndham Hotel Group*; Leslie Golder, *DaimlerChrysler Financial Services*; Lori Clark, *BostonCoach*; Marcia Bradley, *Corporate Associates*; Matthew Hamilton, *Enterprise Rent-A-Car*; Mike Roebuck, *Hyatt Regency DFW*; Neva Lamb, *A&H AwardPro*; Sandie Fouke, *The Mansion on Turtle Creek*; and Stephanie Rich, *The Improv Comedy Club*



▲ **Third Place Tournament Winners** - Hyatt Regency DFW team with
Awards Sponsor, Neva Lamb (A&H AwardPro)

Beverage Station

- * Embassy Suites
- * Grapevine Convention Center

Beverage Cart

- * Hilton Dallas
- * J&S Audio Visual
- * Westin Stone Mountain

Contributing

- * Cowboys Golf Club
- * Freeman
- * Sports Authority
- * The Tribute



ged Team - The Adolphus, Starwood SPE team



ent Winners - Fort Worth CVB

Thank You to our Golf Tournament Sponsors

This special event could not have been such a huge success without the tireless efforts of our awesome golf committee and financial/in-kind donations from our wonderful sponsors.



Special thanks to Mike Roebuck and the Hyatt Regency DFW for supporting this year's Golf Tournament as our Title Sponsor!

Title Sponsor:



Lunch Sponsor:



Awards Sponsor:



Personalized Gift Sponsor:

Jim Quinn's Finer GOLF Products

Facility



Reception Sponsor:



Volunteer Shirt Sponsor:



Entertainment Sponsor:

Matthew Massengale, DMCP

Photography:



Silver Sponsors:



Signage Sponsor:

F R E E M A N

Hole-in-One Sponsor:

DAIMLERCHRYSLER



Golf Hole Sponsors:

- * Catch the Moment
- * Dallas Convention & Visitors Bureau
- * Double Diamond Companies
- * Enterprise Rent-A-Car
- * Golftournament.com
- * Horseshoe Bay Resort Marriott
- * House of Blues Dallas
- * Lone Star Park at Grand Prairie
- * Outstanding Productions: The DMC
- * PRA Destination Management
- * Prava Suites by the Galleria
- * Studio Movie Grill
- * Ultimate Ventures
- * Vail Resorts & Rock Resorts
- * Verizon Wireless Club at Pizza Hut Park

Raffle Prize Sponsors:

- * A&H AwardPro
- * Boundless Network
- * Buffalo Wild Wings
- * Canyon Creek Country Club
- * Champps Americana
- * DAIMLER/CHRYSLER
- * Discover Chamonix
- * Embassy Suites Hotel/Conf. Ctr.
- * EmbroidMe
- * Fabulous Las Vegas Casino Parties
- * Go Fish
- * Hilton Dallas Lincoln Centre
- * Horseshoe Bay Resort Marriott
- * Hyatt Regency DFW
- * IMPROV Comedy Club
- * House of Blues

- * Irving CVB
- * Julie Woodard/La Lique Salon
- * Kenny's Wood Fired Grill
- * Liquid Productions
- * Prava Suites by the Galleria
- * Studio Movie Grill
- * SuperShuttle
- * Texas Indoor Golf
- * Texas Treats
- * The BusBank
- * The Mansion on Turtle Creek
- * Timarron Country Club
- * Truluck's of Addison
- * Ultimate Ventures
- * Verizon Wireless Club
- * YO Ranch Steakhouse

Sponsors:
 Hotel/Conference Center
 Convention & Visitors Bureau

Sponsors:
 Lincoln Centre Hotel

Sponsors:
 Resort

Sponsors:
 Club

May Meeting Chapter Partners

Please salute the following companies and individuals for their contributions to the meeting.

SPEAKER
Gail Evans

MEETING SPONSOR
Sonoma County Tourism Bureau
Jamie Graham

FACILITY
Westin D/FW Airport

SPEAKER AGENCY
Garrett Speakers International
Betty Garrett, CMP

SPEAKER SPONSORS
PLATINUM
BeautiControl - Tim Parker
GOLD
Loews Hotels - Gina Whetsel
SILVER
Conference Direct - Mike Taylor

SPEAKER TRANSPORTATION
BostonCoach
Lori Clark

CENTERPIECES
Design Group - Robert Fox
BostonCoach - Lori Clark
Imagine Events - Tara Judd, CMP

A/V SERVICES
Visual Aids Electronics Corp.
Richard Sinclair

JPA and EVALUATION PRIZES
Loews Lake Las Vegas
Fabulous Las Vegas Casino Parties
Arlington CVB
Sonoma County Tourism Bureau

WORKSHOP FOOD AND BEVERAGE SPONSORS
Morning Workshop
D/FW Independent Meeting Professionals
Afternoon Workshop
American Language Technologies

May Meeting Highlights

by Neva Lamb, A&H AwardPro

"Learn How to Play and Win Big in the Game of Business" was the theme for the May luncheon keynote presentation brought to us by the Women's Leadership Committee. We had the wonderful opportunity to hear Gail Evans, a best-selling author and former executive vice president of CNN, speak about new ways to support our female colleagues based on her latest book, *She Wins, You Win*.

In her highly motivating presentation, Evans advised us of the ONE RULE: Every woman must always play on the women's team. We should always use the one-for-all, all-for-one approach and we should work together to help each other succeed. **Why?** Because every time any woman succeeds in business, your chances of succeeding increase. And every time a woman fails in business, your chances of failure increase.

What can we do? Evans encourages us to:

- **Mentor:** It's our obligation as women to mentor other women. Coach others and share answers and knowledge.
- **Network:** It should not occur just at events. Get out of your small world and get into a bigger picture. Start going out to lunch together and make sure half of your lunch is spent talking about business! It's what makes you smart and more powerful in your own role. Networking helps us to be the kind of people who put people together - and people remember that.
- **Have a "one-liner"** and toot your own horn! Have a one- to two-sentence script ready at all times to identify what you do. Otherwise, you will miss opportunities to make the impression you want to make.
- **Rainmaker:** It's not just about "you and me," it's about paying it forward. Always

Continues on page 10



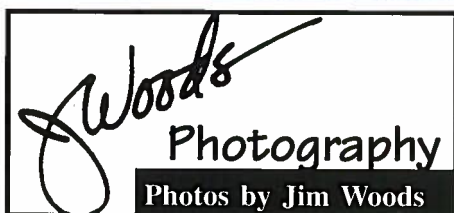
Meeting Sponsors-Sonoma County Tourism Bureau
Jamie Graham; Ken Fischang, CHME, CMP; Marta Hayden, CMP



May Program Chair Sherry DeLaGarza, CMP, CMM, MAC Meetings & Events; Chapter President Sally Goldesberry, CMP, CMM, Society of Petroleum Engineers; Keynote Speaker Gail Evans, Author, *She Wins, You Win*; Speaker Agent, Betty Garrett, CMP, Garrett Speakers International



Members of the May Program Committee: (l to r) Neva Lamb - A&H AwardPro; Lori Clark - BostonCoach; Tara Judd, CMP - Imagine Events, Inc.; Chair - Sherry DeLaGarza, CMP, CMM - MAC Meetings & Events, LLC; Laurie Appelbaum - Electronic Payments Network; Jayna Monroe, CMP - JCM Special Events Inc.; Jenny Kottler, CMP - Jenny Kottler Services, LLC; Sarah Heus - BBJ Linens; Elizabeth Agron, Catering Manager, Westin D/FW Airport; Dan Titchywy, Dallas Stage Right, Inc.
May Committee Members not included are: Katie Day, Meritage Events, LLC; Jamie Graham - Sonoma County Tourism Bureau; Dara Hall, CMP, CMM - Event Source Professionals, Inc.; Sue Mick, CMP - Society of Petroleum Engineers; Bill Reeser, CMP, CTS - AVW-TELAV



EDUCATION NEWS

PRESS RELEASE TEMM Student Places in International Competition - From Her Hospital Bed

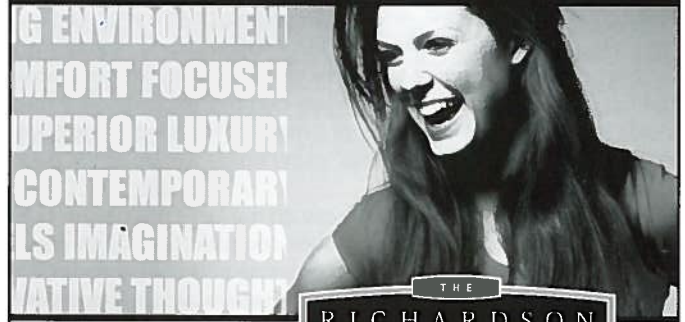
by MT Hickman, CMP, CTP
Program Coordinator, Travel, Exposition and Meeting Management

Traci' Crews, a Richland Community College student in the Travel, Exposition and Meeting Management program placed as a semi-finalist at the International Delta Epsilon Chi Career Development Conference and Competition, even though she was in the hospital at the time. The competition, held in Orlando, FL last month, tests students' management, marketing, planning and other skills needed to succeed in the travel and tourism industry.

After completing the first round of the competition that included a comprehensive exam and a role play case study, Traci's vision began to fail, and she started experiencing a great deal of pain — the affects of a chronic illness that strikes without warning. Her Dallas physician ordered her to the nearest emergency room. There, she was admitted to the hospital for treatment and testing. The next morning, she learned she had qualified for the semi-final round of the competition.

Traci's doctors would not release her to participate in the competition. After a flurry of inquiries and consultations with the judges and Traci's doctors, Traci' was permitted to compete from the hospital, by phone. A representative from the competition came to the hospital to administer the case study, and she completed her answer to the judge over the phone.

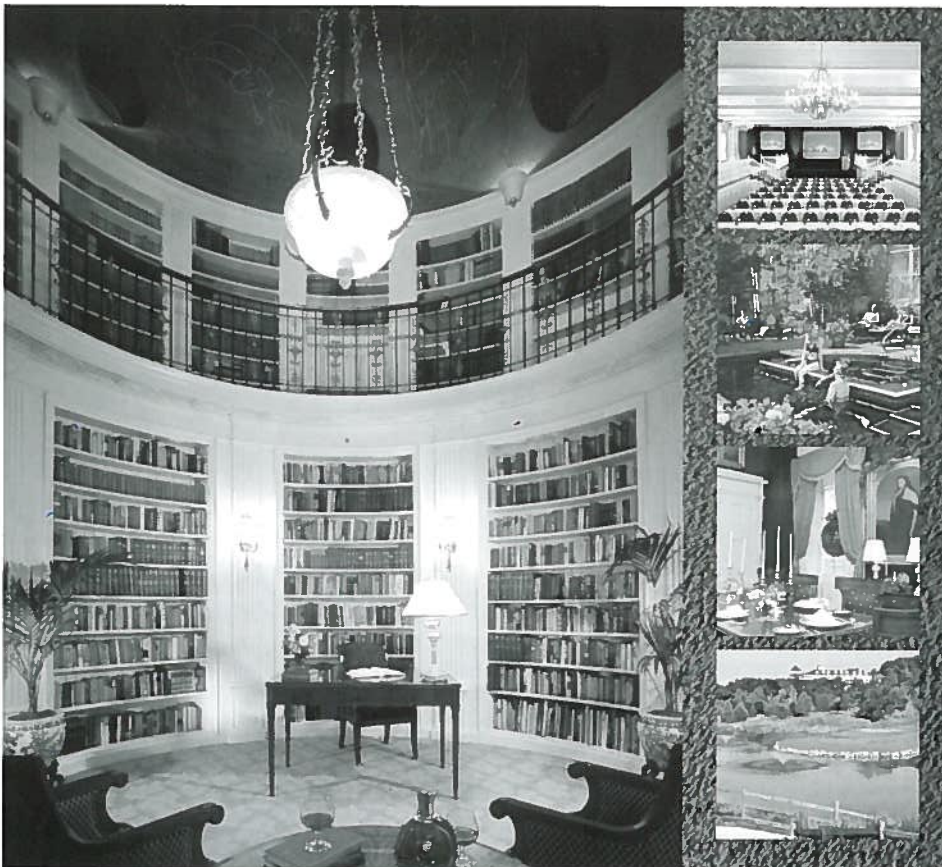
Traci's symptoms were brought under control, and she was released from the hospital later that evening. Traci' arrived at the awards ceremony just in time to hear her name called from the stage to receive her semi-finalist medal. 🌐



*The next big idea.
Everyone seeks it.*

We've created the ideal place to find it. Productivity soars in an engaging environment of focused comfort, while superior luxury and contemporary styling fuels imagination and innovative thought. The result? Your next big idea.

701 East Campbell Road, Richardson, Texas 75081
866.454.1632 | richardsonmeeting.com



Meetings That Inspire.

Historic Hotels of America has a tradition of playing host to meetings and events that inspire and delight. With more than 200 hotels, resorts and inns across the United States and Puerto Rico, our collection offers distinctive accommodations and state-of-the-art conference centers for every type of gathering.

So relax and make your next meeting decision an inspired one. Visit us at www.HistoricHotels.org and click on Meetings & Events or call our National Sales Office at 202-588-6028.

Historic Hotels of America. Be Inspired.

Be Inspired! Just visit us at www.HistoricHotels.org and submit an RFP to be automatically entered to win a weekend for two at the Historic Hotel of America of your choice. Promotion ends 9/30/07.



www.HistoricHotels.org



Erica Hesley


DMC - The Comeback Kid!

by Erica Hesley, *Ultimate Ventures*

I was recently asked what the current trends are in the Destination Management field. After evaluating recent client requests and combining these with my industry experience, it occurred to me that the biggest trend is what has resurfaced. Viewing our industry over an extended period of time, it becomes noticeable that there is a cyclical nature to certain requests. An event theme or service category that was top of the list last year is quite likely the last to be considered this year. However, given a little time on the shelf most ideas are brought back to life a few years later turning them into a hip and modern version.

Lately, Destination Management Companies (DMC) are seeing team-building activities as the comeback kid. No longer a simple request for a ropes course, today's planners challenge our ingenuity with needs ranging from interactive activities to custom designed programs based on specific objectives. In addition to creating the perfect team-building experience, it has also become more common that we assist in maintaining continuity of a meeting message or program content. Since DMC services usually touch most aspects of the guests' experience, we are in the perfect position to lend a hand.

The most recent example I experienced is a large scale team-building program we created. Our client came to us with a very specific request requiring that guests remain on site at the hotel, engage in a fun activity and that we be able to incorporate company information into the program. Since most team-building programs offer the option of customization, this seemed a fairly standard endeavor. Further conversations with our client allowed us to see that this was not the usual request. What started as a scavenger hunt through the hotel with some company related fun facts slowly evolved into a fully customized program carrying over meeting content to be used as part of the hunt. As guests follow the clues and engage in team challenges, they are unwittingly cementing the barrage of information presented to them in their morning meetings. In essence, the team building became a final exam of sorts to determine which groups really were listening!


As the team-building trend continues and clients require more detailed programs, DMC's must be prepared to apply their creative skills to this staple service. It is no longer sufficient to simply create interaction between attendees. Clients are now looking for programs to reinforce their meeting message and increase their return on investment. 

May Meeting Recap

... continued from page 8

consider a woman. It does not mean "favor" a woman, but it does mean to make sure that a woman is always considered for that job or piece of business. They don't have to be chosen, but they need to be given the chance to compete.

- Own your successes. When someone tells you "Great job!" don't discount your effort by responding, "Oh, it was nothing." Instead, simply say, "Thank you!"

And our "winners" list keeps going on. Sally Goldesberry, CMP, CMM announced that our own "Team MPI" won 1st Place at the recent ISES Event Industry Olympics! Sherry DeLaGarza, CMP, CMM announced that the JPA Committee surpassed its yearly donation goal of \$3,500 and Alison Kieckhafer of our Chapter Charity Relations Committee just informed us that our wonderful MPI colleagues contributed over \$500 to the Wounded Warriors Foundation. Wow! MPI is full of winners! 



DEFINING THE POWER OF MEETINGS™



Nature

has been hard at work

here for thousands of years.

Imagine what your company can accomplish in a few days.

This is fertile soil.

866.605.4260



The Woodlands
RESORT & CONFERENCE CENTER
Just 30 minutes north of Houston

Take a fresh look – www.woodlandsresort.com

60,000 sq ft of meeting space | 440 guest rooms | 32 years of meeting success

MEMBERSHIP NEWS




Paula Bruton, CMP

“Wiki What?”

by Paula Bruton, CMP

That’s right - we’ve got our own Wiki. Similar to Wikipedia on the web, **MPIweb.org** has launched their version of an industry related Wiki beta. You may be asking yourself . . . What is a Wiki? Well, it’s a form of an encyclopedia that lists articles/trends/industry topics and terms related to the Meeting Professional. The best part is, you can be an author. Visit **MPIweb.org/wiki** and be one of the first to participate!

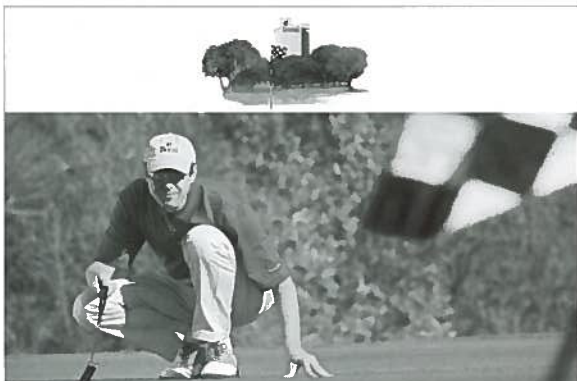
“Blog, Blog, Blog, Blog, Blog . . .”

Unlike blah, blah . . . well you get the picture; MPIweb.org now offers each member blog on their personal page. Get to **MPIweb.org** under the **Community Connections** tab and view the newest blogs posted or start your own! 

New Kids on the Block

Welcome to Our Newest Members!

- CJ Adamczyk.....Dallas Cowboys Football Club
- Amanda Arnett.....Grand Hyatt DFW
- Kristas Baird.....Medtronic Neurologic Technologies
- Tiffany Baskerville.....Alcon Laboratories
- Karen Beck.....NCH Corporation
- Marcia Bradley.....Hilton Anatole
- Mark Brown.....The Summit Ballrooms
- Jenny Burnside.....Cisco Systems, Inc.
- Elysse Burrow.....1st Global
- Nicole Busby.....
- Katie Day.....Meritage Events
- Tierney Epstein.....SDMS
- Andrea Fancher.....Holden Custom Products
- Michelle Grissman.....AmeriSuites Historic
- Heather Hankamer.....STAK Design, Inc
- Ann Hastings.....Hilton
- Tierra Henderson.....Parker College of Chiropratic / Parker Seminars
- Peyton Henderson.....David Sutherland Inc.
- Keisha Hornsby.....
- Katherine Kowalski.....Dave & Busters
- Lamona Lawrence.....Southwest Power Pool
- Erika McMinn.....Northeast Tarrant
- Richard Mitchell.....etc group inc
- Barb Reynolds.....Boys & Girls Clubs of America
- Anna Saied.....
- Amy Shackelford.....City Club of Fort Worth
- Holly Swanzy.....Eventlink International, Inc.
- Joe Vanden Heuvel.....Hyatt Regency Dall
- Rashida Williams.....Enterprise Community Partners, Inc
- Cheryl-Ann Wong.....Tenet Healthcare Corp



Twenty minutes ago,
he was lining up a merger.

Only one resort combines 4-star amenities with 4-star golf in Fort Worth – the Doral Tesoro. With 22,000 feet of meeting space indoors and 5,000 outdoors, it’s the ideal setting for your next event.

www.DoralTesoro.com
817.961.0800



Timothy Arnold

The MPI D/FW New Members Networking Event

by Timothy Arnold

Director of Education - MPI D/FW Chapter (2007-2008)

On the stormy night of April 24, a group of courageous MPI members gathered in the safe harbor of Dave and Busters. Their purpose was to network with peers and to learn more about the opportunities that MPI offers. In addition to exceptional food and fun, some wonderful prizes were won by several lucky attendees. Carrie Elder, representing the Membership Committee, talked to everyone about how there are so many different committees within MPI, and we would love to use your skills to assist others. Whatever your talents, there is a perfect spot for you within the MPI family. We would certainly encourage you to talk to any board member, or committee chair to learn more about the plethora of opportunities available.

Our goal is to have more of these meetings in the future, so stay tuned to this space for upcoming events. A big thank you goes out to Ty Watson with Dave and Busters and Carrie Elder, for making this event possible. Sue Mick (Society of Petroleum Engineers) and Julie Hicks (Hilton DFW Lakes) worked to secure the giveaways for the evening. The prizes were generously donated by Dave and Busters, Cowboys Golf Club, Hilton DFW Lakes, and Society of Petroleum Engineers.



We also appreciate those who braved the weather and were able to make it to the event.



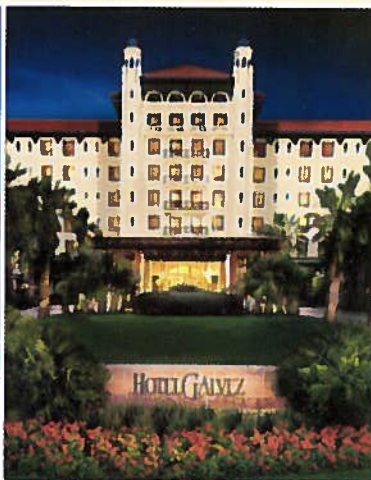
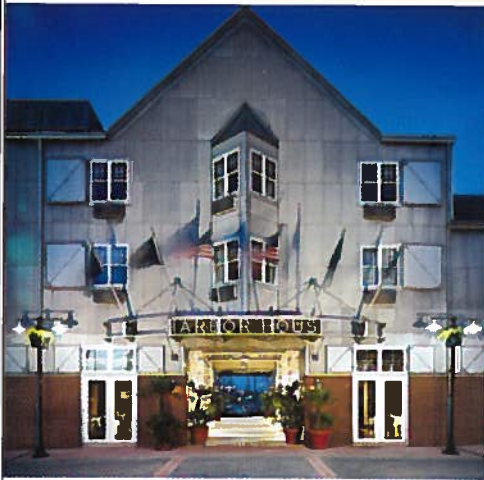
www.mpidfw.org

Dallas/Fort Worth Chapter
PMB 259

7750 North MacArthur Blvd., Suite 120
Irving, TX 75063-7501

RETURN SERVICE REQUESTED

MAKE THIS YEAR'S MEETING HISTORIC IN MORE THAN ONE WAY.



WHAT'S YOUR REQUEST? Do you want to be close to the Strand Historic District? Within walking distance of the University of Texas Medical Branch? Whether you prefer the classic beachfront setting of the Hotel Galvez, the Victorian elegance of the Tremont House or the quaint dockside atmosphere of Harbor House at Pier 21, Wyndham's renowned hotels keep you in the middle of it all. Distinguish your next trip and enjoy the best of Galveston in vintage fashion with one of these legendary stays. **1.888.WYNDHAM www.wyndham.com**

Galveston Island, Texas

