

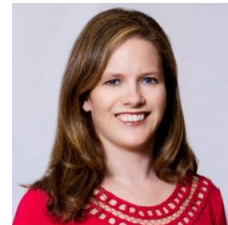


CHAPTER HAPPENINGS

February 2019

Message From The President

Ah, February, the month to be with the ones you love. Well MPI members, I LOVE YOU! As an MPI member, you make this chapter, and my world, just a little bit brighter. Whether you are volunteering your valuable time in a committee, contributing financially as a sponsor or to the foundation or JPA scholarship fund, bringing guests into the fold, or simply showing up to a meeting every once in a while, you are a contributing member of our chapter and your membership means so much to me.



Around Valentine's Day, you will be receiving an email from MPI Global asking you to participate in the annual member satisfaction survey. Not only will your answers give Global and our chapter direction for the future, it helps our chapter in other ways. The number of respondents and average satisfaction percentage is a part of our yearly goals with Global, which help us gain financial benefits for our chapter and ranks us among the other chapters world-wide. Remember when I mentioned in October that we were ranked as a High Performing Chapter? Yeah, this is part of it! So, please, take a few minutes to complete this survey. It really is necessary and appreciated by our chapter, not just another email from Global!

I hope that you will join us to share the love of a topic near and dear to my heart, Women in Leadership, this month at the Emerging Leaders event. As the co-owner of a male-dominated company and field, I am so thrilled to have some powerful women who have also experienced the joy of climbing the corporate ladder in a male-dominated industry, as our speakers.

Spend a few minutes this month to remind yourself why you love MPI. Are you giving love in return by giving back to the chapter? Let's come together and experience the love of our chapter and our industry as it grows through service and community. Let's IGNITE SOMETHING!

Paige Mejia

MPI D/FW President



MPI D/FW Board Selections team has identified the following individuals believed to have the skills, dedication and integrity to provide outstanding leadership to our chapter by serving on the MPI D/FW

Board of Directors for the 2019-2020 term.

Per chapter By-Laws, as a member in good standing, you have the right to review and challenge the slate of Directors as listed below. To submit a contest to this slate, please contact the chair of the

Selections Committee, Erin Lucia, at immedpastpresident@mpidfw.org

OFFICERS (voted on by current board)

President: Tuula Westlake, CASE

President-Elect: Annie Matthews

Immediate Past President: Paige Mejia, FPO

Vice President, Communications & Marketing: Libby Severance, CTIE

Vice President, Education & Events: Robert Sanchez, CMP

Vice President, Finance & Sponsorship: Melissa Tacker

Vice President, Leadership: Shanika Davis

Vice President, Membership: Corina Balsells, CMP, CMM

DIRECTORS

Director, Communications & Marketing: Tricia Hill

Director, Education & Events: Shelana Poindexter

Director, Education & Events: Sandra Dyeak

Director, Finance & Sponsorship: Jonathan Goldwater

Director, Leadership: Sarah Gould-Stotts

Director, Membership: Kim Hussey



COLLEEN RICKENBACHER LEADERSHIP AWARD

Do you know an MPI D/FW member who has their CMP or CMP designation and has demonstrated leadership, is committed to education and is an advocate of professional certifications? Most of us do, but we don't know how to recognize his/her work. The Colleen Rickenbacher Leadership Award is an excellent way to acknowledge your colleagues. The nominations process is now open. Check your e-mail for details and take a few minutes to submit a nomination so that your colleague is acknowledged for their hard work and leadership.

Click [HERE](#) to review eligible members and [HERE](#) to download the nomination form.

Nomination forms are due by 6pm Feb 26th.

EMERGING LEADERS

Women on the Move ... Bridging the Gap

Come and spend an evening with 3 dynamic women as they discuss how they broke the glass ceiling. Achieving gender equity requires heavy lifting. This year's Emerging Leaders covers not only the strategies for inclusion of women in leadership roles, but we also review multilateral initiatives to expand women's political and economic participation. This event is open to all with a bold resolution to forge ahead and take their career to the next level.



[Register Today!](#)

Thursday, February 28th 6:00 – 8:30 p.m.

Vouv Room - 4445 Sigma Rd, Farmers Branch, TX 75244

MPI Member: \$25



FEBRUARY CSR: The Birthday Party Project

We believe that JOY changes lives, and a JOYful community can change the world. With the help of our birthday enthusiasts (that's you!) we host monthly birthday parties at homeless and transitional living facilities across the country. We celebrate all children (ages 1-22) that have a birthday that month, and we invite all children and family members staying at the agency to join us for the party.



<https://www.thebirthdaypartyproject.org/>

February – Collect boys and girls birthday presents- Doc McStuffins, Paw Patrol, Coloring book and crayons, lego sets, LOL dolls, board books, slime kits, sports balls / equipment, make-your-own jewelry kits, gift cards to Walmart, Target, learning toys for toddlers.

March – Help with Birthday party for Boys and Girls at Ronald McDonald House)medical district

March 18th 6:30-8:30pm signup necessary

MPI D/FW Ambassadors





Are you a current MPI D/FW member? Do you enjoy meeting new people?

Then sign-up now to become an Ambassador for our New Members!

[CLICK HERE TO SIGN-UP](#)

CVBs, DMCs, and Cities, OH MY!

If you represent a CVB, a specific city or a DMC, advertising with MPI D/FW Chapter offers targeted, affordable ways to get your message to meeting professionals. MPI D/FW members and non-members benefit from learning about opportunities that you offer. Your message reaches both planners and suppliers in the North Texas area and the rates are affordable.



For example, you can include your city's information in the chapter's e-Newsletter. In an article like this one, you can highlight the best your city has to offer - and at a minimal cost, include a banner ad to the newsletter. You can find MPI D/FW rate information [here](#).

Mark your calendars for June 6-9, 2020 when MPI signature event World Education Congress (WEC) comes to Grapevine, TX. During WEC, MPI showcases some of the unique venues and charm of North Texas. In preparation for this event, get your message out now to North Texas meeting professionals. Contact our VP of Finance, Annie Matthews at vpfinance@mpidfw.org with questions.



Seeking Mentors and Mentees

“Tell me and I forget, teach me and I may remember involve me and I learn”

~ Confucian Philosophe, Xunzi

We are seeking mentors and mentees to participate in our exciting Mentorship Program! Share your professional experience as a mentor or learn from experienced professionals as a mentee.

- Informal sessions at times and locations that fits your schedule.
- Customs matches of mentors with mentees based on areas of interest & career goals.
- Share your professional insights & experience, and provide guidance to aspiring and inspiring professionals.

The mentorship program is open to MPI D/FW members and now accepting applications for the 2018-2019 term.

For more information and program details contact Corina Balsells dirleadership@mpidfw.org



CONGRATULATIONS NEW CMP'S!!



Alicia Castleberry, CMP

Hayley Hamre, CMP

Kelsey O'Conner, CMP

Kristi Walker, CMP

Julie Bretz, CMP

Shannon Markle, CMP

Danielle Anderson, CMP

The Spring CMP Class begins in March. If you are interested in more information, contact Charlene Edwards, CMP at cedemby@gmail.com.

Ever wonder about the buying power of our MPI chapter? [Click here](#) for the latest demographic report created by MPI global for our DFW chapter.



Welcome, New Members!

Julien DuPont – Mountain Time Enterprises LLC

Nannette Eiland – Visit Fort Worth

Nichole Gaunt – SODEXO

Monica Gonzalez – Meeting Professionals International

Sarah Gould-Stotts – Simple Meeting Solutions

James Hamilton

Daniella Harrison – Seed Company

Megan Manchester – Evolution Event Solutions

Jessica Marx – Fannie Mae

Leslie Mitchell – Rutherford & Associates

Jill Muth – FreeRange Concepts

Alan Paoletti – APMagic

Elisabeth Sherrell – ICPA, Inc

Corinne Trigg

Kelly Wildfong – Omni Fort Worth Hotel

Update Your Contact Information



Your MPI D/FW Chapter leadership team is working diligently to keep you up-to-date on chapter events such as training, luncheons, and leadership meetings. We use your MPI Global Profile to retrieve your contact information and build our chapter directory (scheduled for delivery in the fall), so make sure to record your changes. Updating your MPI Global profile is simple. Just log in at MPIweb.org and access your member profile to update your contact information and manage your email preferences.



Save The Date!

Mark your calendars for these upcoming events.

Feb. 28 - MPI D/FW Emerging Leaders

March 7 - Rock Your Brand
Networking Event

March 28 - Chapter Experience

April 25 - CMM/CMP Breakfast

May 7-8 Spring Sales Blitz

June 27 - Annual Awards Gala

[View full event calendar](#)



Members on the Move

Kelly Booth Moore - Director of Sales
and Marketing at Westin Dallas
Downtown

Have you or someone you know
recently made a job change? Please [let
us know](#) so we can share the good
news.

Host an MPI D/FW event

Interested in hosting a future MPI D/FW
event? Reach out to Cassie Poss for more
information.

cassieposs4514@gmail.com



Copyright © 2019

MPI Dallas Fort Worth Chapter

All rights reserved.

You are receiving this email because you previously
interacted with MPI D/FW Chapter.

P: (972) 233-9107 x201

F: (972) 490-4219

chapadmin@mpidfw.org

Caitlin Watson, Chapter Administrator

MPI Dallas Fort Worth Chapter

Suite 100, LB9

14070 Proton Rd.

Dallas, Texas 75244

[Add us to your address book](#)

Want to change how you receive these emails?

You can [update your preferences](#) or [unsubscribe from this list](#).