

MPI

MEETING PROFESSIONALS INTERNATIONAL®

Committed to Educational Leadership

CURRENT

Meeting Professionals International

August 1998

Dallas/Fort Worth Chapter

'True Colors' Troupe Encourages MPI D/FW to Value the Differences and Volunteer for an Even Greater TEAM!



MPI D/FW Chapter members were introduced to True Colors™—a study of individual work styles and personalities—through comedy, song and drama at last month's chapter meeting at Brookhaven Country Club.

Using color as a metaphor for understanding human characteristics, True Colors™ suggested ways behavior and talents can be utilized in a TEAM approach to success in chapter endeavors.

Bryan's House recently honored the MPI D/FW Chapter with a permanent plaque in the "Hall of Fame," honoring donors of \$5000 and more. Gregory Pynes (Hand & Associates), immediate past president, was on hand to accept the honor. Bryan's House responds to the needs of children and their families who are impacted by HIV/AIDS by providing medically-managed child care and community-based, family-centered support activities in a home-like, sub-acute care facility. Bryan's House is one of several beneficiaries of The MPI Kids Charity Ball.



In this issue

President's Message	3
Star of the Month	4
August Meeting Details	5
Education News	6
Last Month's Meeting	8
TMKCB Report	10
"Grapevine" News	11
International Committees	14

CURRENT MPI

MEETING PROFESSIONALS INTERNATIONAL®

Committed to Educational Leadership

Dallas/Fort Worth Chapter
4020 McEwen • Suite 105
Dallas Texas 75244
972-233-9107x1-674 • FAX 972-490-4219
judy@dondillon.com

Editor
Gracie Hatfield Hilton
The Write Stuff
metro 817-467-5449 • FAX: 817-467-4194
gracie@eaze.net

Vice President Public Relations/Marketing
Marsha Singer
The Dallas Directory
214.823.4370

Director of Chapter Communications
and Managing Editor
Kristi Carter
J&S Audio Visual, Inc.
972.241.5444 • FAX 972.247.2590

Advertising Chair
Stephanie Schroeder
Starwood Hotels & Resorts
972.238-1008 • FAX 972.238.9290

Photographer & Videographer
VISTA Photographic & Video Group
972-380-0985 • FAX: 972-267-9758

Regular Contributors and Writers
Mitchell Cathey
Palomino • 214.999.1222
Delinda Dudley
Fun Factory • 972.271.7444
M.T. Hickman
Richland College • 972.238.6097
Pat McCain, CMP
Krisam Group • 972.458.8692
Dana Nickerson, CMP
Square One Productions • 214.343.8067
Colleen Rickenbacher, CMP
Dallas CVB • 214.571.1040
Ann Stetson
Le Meridien Hotel • 214.855.1735

MISSION STATEMENT

Meeting Professionals International is the pivotal force in positioning meetings as a primary communication vehicle and a critical component of an organization's success. Meeting Professionals International leads the meetings industry by serving the diverse needs of all people with a direct interest in the outcome of meetings, educating and preparing members for both their changing roles and validating relevant knowledge and skills, as well as demonstrating a commitment to excellence in meetings.

The *CURRENT* is published 12 times yearly for the D/FW Chapter of Meeting Professionals International, the industry's leading educational and networking resource in meetings management. Statements of fact and opinion are the responsibility of individual writers and do not imply collective opinion of the officers or members of MPI. The *CURRENT* and MPI D/FW Board of Directors are not responsible for the content of advertisements. Any complaints concerning an ad should be directed to the advertiser.

Upcoming Chapter Meetings

August 27, Thursday
Monthly Chapter Meeting
Le Meridien Hotel
11:30 a.m.-1:30 p.m.

September 24, Thursday
Monthly Chapter Meeting
Doubletree at Lincoln Centre
6:00-9:00 p.m.

October 22, Thursday
Monthly Chapter Meeting
Granada Theatre North
11:30 a.m.-1:30 p.m.

November 19, Thursday
Monthly Chapter Meeting
Fairmont Hotel
11:30 a.m.-1:30 pm

December 17, Thursday
Holiday Party
Southfork Ranch
6:00-9:00 p.m.

MPI

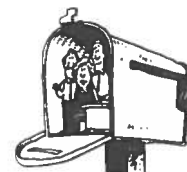
MEETING PROFESSIONALS INTERNATIONAL®

Committed to Educational Leadership

MPI International Headquarters
4455 LBJ Freeway • Suite 1200
Dallas, Texas 75244-5903
972-702-3000
FAX: 972-702-3070
<http://www.mpiweb.org>

New job? address? phone number? e-mail address?

Report those changes to the
MPI D/FW Chapter office
972-233-9107
and the
MPI International Headquarters
972-702-3000



Keep your records up to date!

ISSUE	DEADLINE
September inserts due Sept. 9	August 14, Friday
October inserts due Oct. 7	Sept. 18, Friday
November inserts due Nov. 4	Oct. 16, Friday
December inserts due Dec. 2	Nov. 13, Friday

CURRENT Deadlines



E-mail copy (Microsoft Word/Windows attachment) to
gracie@eaze.net

President's Message

MPI D/FW TEAM Represented Well at WEC in San Diego

Last month 107 MPI D/FW Chapter members attended the 1998 World Education Congress (WEC) in San Diego. It was a successful program for educational growth and networking. But what was most rewarding was to see our chapter members in action as a TEAM.

D/FW Chapter members serve on the International Board of Directors, on numerous International Committees; as chairs of various committees and as facilitators for educational sessions. We were well represented in the trade show as well as in the Awards Program.



Colleen Rickenbacher,
CMP
Dallas CVB
D/FW Chapter President

MPI D/FW members were key players "everywhere you turned."

The Dallas/Fort Worth Chapter is and always will be respected as one of the top chapters of Meeting Professionals International. Our members are looked upon as role models, key players, educational leaders, mentors and members with a purpose and goal.

Not everyone can participate in the WEC or the January 24-26, 1999 MPI Professional Education Conference-North America (PEC) in Vancouver, B.C., but there are many other ways to be an active member and leader without ever leaving the metroplex.

The first official sign-up for committees and chapter involvement took place at the July monthly meeting. But it's not too late!

This is a volunteer organization so we understand your family and job commitments. You can serve on a committee for the entire year, or a specific program that is a shorter time commitment; give us as much of your time as you can afford.

Involvement is important for you for individual growth and your future needs. But involvement as a complete Chapter and a TEAM is our key to growth.

We will continue to be #1 as a chapter because our members are a TEAM!



Several of the 107 MPI D/FW Chapter members attending last month's meeting of the 1998 World Education Congress (WEC) in San Diego gather for a group photo.

MPI

MEETING PROFESSIONALS INTERNATIONAL®

Committed to Educational Leadership

Meeting Professionals International is the world's largest association of meetings professionals with more than 14,500 members in 51 countries and 58 chapters and three clubs. MPI serves as the pivotal force in positioning meetings as a primary communication vehicle and a critical component of an organization's success. MPI leads the meeting industry by serving the diverse needs of members and nonmembers alike through its commitment to quality education, continuous improvement and excellence in meetings while upholding high ethical standards.

President

Colleen A. Rickenbacher, CMP
Dallas Convention & Visitors Bureau
214.571.1040

President-Elect

Steven G. Foster
Circle R Ranch
817.430.1561

Immediate Past President

Gregory Pynes
Hand & Associates Marketing Communications
214.979.4639

Vice President of Education

Peg Wolschon
Gray Line/Kerrville Bus/Coach USA
972.263.0294, #103

Vice President of Membership

Cindy M. Hamilton
Cityplace
214.841.6830

Vice President of Programs

Betty E. Garrett, CMP
Garrett Speakers International, Inc.
972.513.0054

Vice President of Administration

Linda Vest, CMP
State Farm Insurance
972.732.5970

Vice President of PR/Marketing

Marsha Singer
The Dallas Directory, Inc.
214.823.4370

Vice President of Finance

Melissa Parks, CMP
H.D. Vest Financial Services
972.870.6160

BOARD OF DIRECTORS

Cheryl L. Beasley, CMP
SABRE
817.963.2025

Randie Charnes
NCR Corp.
972.402.0125

Tony Cummins
Adam's Mark Hotel Dallas
214.922.0316

Delinda Dudley
Fun Factory Decorations & Special Events
972.271.7444

Cyndi Martinez, CMP
The Stoneleigh Hotel
214.871.7111

Tamara Quilty
MCI Performance Group
972.417.3204

Stephanie Schroeder
Starwood Hotels & Resorts
972.238.1008

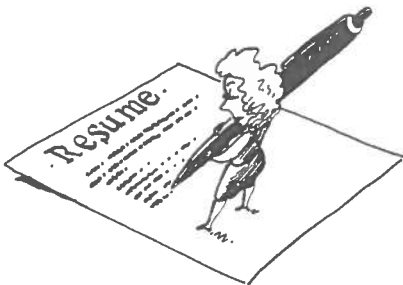
Tim Wade
Lennox Industries Inc
972.497.5039

**D/FW
Meetings
& Hospitality
Industry**

JOB BANK

**Voice Mail
972-381-5624**

**Find a Good Job!
Find a Good Employee!**



Features

- List of job openings with contact information
- Updated weekly
- Instructions about listing a job
- Leave a message for Job Bank committees of MPI, NACE or HSMIA
- Free for applicants

To volunteer for the Job Bank Committee, call
Elly Paulsen
(Freeman Decorating)
214) 634-1463

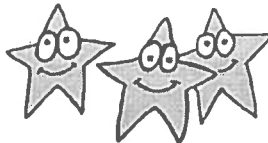


"Star of the Month" is a recognition program honoring chapter members for involvement in committees and special programs. All Stars of the Month are eligible for a special drawing for two educational scholarship awards to attend the MPI International Conference or other MPI educational opportunities.

Keith Hickman (Sixth Floor Museum), a member of MPI for almost six years, is the Star of the Month. A big supporter of The MPI Kids Charity Ball, Hickman worked the "back-up" to the chair of the sponsorship committee and was instrumental in raising more than \$87,500 in sponsorships funds. He chaired the July 1997 monthly program that was nominated for the Program of the Year award. Hickman was on the committee for the Awards Gala and donated prizes to the Jan Pollard Award for PGA.



*Keith Hickman
Sixth Floor Museum*



To nominate a Star of the Month, send fax to Ann Stetson (Le Meridien Hotel), 214-855-1735.

**Second Annual
Texas
Education
Conference**

**MPI
TEC**

November 7-8, 1998
Saint Luis Hotel • Galveston

MPI Hill Country
MPI Houston Area
MPI D/FW

"Ride the Wave to Success"

Join us for great educational programs, networking, and social events. Featured speakers will include Hattie Hill; Padi Selwyn, M.D.; Louise Upshaw-McClenny; Albert Spears; Robin Hunt, CMP; and Mark Philippovic.

\$85 for MPI members; \$125 for non members

Registration forms will be available soon.
Call Gregory Pynes at 214.979.4639 with questions.

Technology Impact: Into the Future with Plansoft

By Sherri Cook, CMP
Sherri Cook & Associates

The August 27 MPI D/FW chapter meeting at Le Meridien Hotel will feature PlanSoft, on-line meeting management software.

Why Attend?

Don't miss this exciting opportunity to review the hottest, latest technology in planning conferences interactively with planners and suppliers.

Come learn how shared information can be used to create meeting profiles, enter and update meeting requirements and communicate directly with vendors and/or clients.

Additionally, see how deletions and modifications can be traced in a "history log" for easy reference. Electronically, users will exchange meeting specification data with the facility via The PlanSoft Network.

We're all focused on advancing our profession and delivering better meetings.

We do it by focusing on content and execution, not by reconciling a wide array of disparate meeting supplier information or figuring out what changed in the last iteration of our meeting spec from the hotel.

Our organizations and competitive economy demand more performance. The pace of change is only getting more rapid, so now's the time to get up to speed and begin incorporating great new solutions.

What is this New Technology?

The PlanSoft Network houses the web's most comprehensive collection of supplier information and productivity tools for meeting professionals.

The network includes: 1) searchable, complete databases of thousands of hotels, convention centers, CVBs, audio-visual companies and other vendors; 2) advanced search engines that include room sizes, geography, climate, etc.; and 3) extensive multimedia content for facilities.

Automatic delivery of your RFPs to meeting facilities significantly reduces the typical fax/mail burden. And, the

MPI

MEETING PROFESSIONALS INTERNATIONAL®

Committed to Educational Leadership

August MPI D/FW Chapter Meeting

"Into the Future with PlanSoft"

—Featuring On-Line Meeting Management Software—

Sponsored by The Mexican Government Tourism Office

Thursday, August 27

*Le Meridien Hotel
650 North Pearl
Dallas, TX 75201
214-979-9000*

*11:00 a.m. Chapter Orientation—Champagne
11:30 a.m. Registration & Reception—Plaza Ballroom Foyer
12:00 noon Lunch and Program—Plaza Ballroom*

—Complimentary Valet Parking • Garage Parking \$10—

*R.S.V.P. to Judy
by noon, Tuesday, August 25
•FAX 972-490-4219 (see fax insert)
FAX confirmation preferred!
•judy@dondillon.com*

*Advance Registration \$24
Late Registration \$32
Guest Registration \$30*

Ajenis software package will organize and track these details with a series of interactive planning templates that work with a context-sensitive menu of choices called "pick lists."

Ajenis' highlights include effortless change management, integrated budgeting and billing systems, a graphical scheduling module, and flexible reporting options. For the first time, creating conferences and events will be completed with simple "clicks and drags" instead of time-consuming data entry.

Who's Involved?

Sounds pretty exciting, and perhaps a little intimidating, doesn't it? Don't worry, there's still time to learn and develop the skills necessary to harness the powerful technology at your doorstep. We

continued on page 6

August Host Facility Le Meridien Hotel

Le Meridien Dallas is located in the Heart of Downtown's Arts District. Its unique location in the Plaza of the Americas complex provides access to a variety of shops and restaurants in a climate controlled setting.

The Pearl St. DART station, right outside our door, puts all of downtown's attractions only minutes away.

A total renovation of our 407 guest rooms, public and meeting space will be complete by the end of August.

EDUCATION NEWS

Instant Access to Meeting Industry Information MPI Resource Center: 'The World's Most Comprehensive Meeting Resource'

Key in on the future of the industry. Identify potential suppliers, clients and employers. Research meeting themes and topics critical to your event's success. Do it all just by making one phone call.

MPI Resource Center is your answer for obtaining critical information pertaining to the meeting industry.

In-depth facts, figures, statistics, historical data and an accumulation of material from the meeting industry can help you plan your meetings, enhance your professional development, recognize trends in the industry, and save your organization time and money.

MPI members and non members, senior industry executives, new meeting planners, suppliers and students rely on the MPI Resource Center for up-to-date information and research services.

Discover the MPI Resource Center and you, too, have access to the world's most comprehensive meeting information resource.

The Resource Center was established in 1989 through a partnership with ITT Sheraton Corporation and the MPI Foundation.

Its mission to support the informational needs of meeting professionals was turned over to the association in June 1994.

Today, the Resource Center remains the industry's most comprehensive library of books, periodicals, research subject packages and statistics.

More than 1,300 volumes are cataloged, shelved and available for reference. A database of over 500 subject listings with topics ranging from "Cruises" to "Crisis Management" contains more than 5,000 records accessible to industry professionals. All reference

materials are available on a walk-in basis at MPI International Headquarters in Dallas, Texas, and via mail, phone, fax and Internet e-mail for a nominal charge.

Research Services

Utilize the MPI Resource Center for all of your professional information needs. A comprehensive collection of reference materials and access to other industry resources allow professionally trained staff to fill your request in a timely, effective manner.

MPI

MEETING PROFESSIONALS INTERNATIONAL®
Committed to Educational Leadership

August Chapter Meeting *continued from page 4*

couldn't ask for better organizations to help us, either.

Our industry's leaders (Meeting Professionals International, American Society of Association Executives, Hyatt, Marriott, Sheraton and GES Exposition Services) are joined in the PlanSoft Partnership to bring technology, information and communication together in a way that will forever change the way we work.

The partnership's overriding mission is to provide groundbreaking solutions (versus solutions that make us better typists) that materially advance our profession.

After attending this hands-on session, you will be able to: discuss planning ideas and technology nightmares; leverage existing technology to organize and produce detailed meetings. Now is the time to look into the future and get up to speed by incorporating some great new solutions.



Why Are Women So Strange and Men So Weird?

Communication runs your company . . . and your relationships!

Humorist-psychologist Bruce Christopher, brings his national best-seller to Dallas. If you live or work with the opposite sex, you *need* this entertaining seminar. As America's foremost "EnterTrainer", he is the most sought after speaker in the fortune 500.

REGISTER TODAY! (limited seating)

PUBLIC SEMINAR

Topic: *Why Are Women So Strange and Men So Weird?*
When: *Tuesday, October 6, 1998*
Where: *Addison Conference Ctr, Addison, TX*
Time: *7:15 am - 8:00 am - Registration/Breakfast*
8:00 am - 12 noon - Seminar
Cost: *\$74 for members: \$89 for non-members*

Register by calling M.T. Hickman @ 972-866-8640

Preregistration/payment required.

Visit our website at: www.bcseminars.com



Sponsored by BC Seminars
MPI D/FW
the Principal Financial Group

Educational Opportunities & Upcoming Industry Meetings at a glance



September 9-10
HSMAI's Affordable Meetings Expo & Conference
Washington, D.C. Convention Center
Call: 800-272-7469

September 12-17
C.M.M. Program
(Certificate in Meeting Mgmt.)
Michigan State University
Lansing, MI

September 14
CMP Application Deadline
\$125 fee due

October 6
Super Session
"Why are Women So Strange & Men so Weird?"
Addison Conference & Theatre Centre

October 13-15
I.T.M.E. & NPS Motivation Show
McCormick Place, North & South
Chicago, IL
Call: 630-850-7779

October 26
CMP Examination Commitment
Due To International

November 4-7
Society of Corporate Meeting Professionals
Adam's Mark Hotel
San Antonio, TX
Call: 404-355-9932

November 6-8
T.E.C. - Texas Educational Conference
Galveston Island, TX

For more information
about any of these educational opportunities call
Marti Fox, CTC (BTI Americas)
214-905-8550

MPI D/FW Member Among Six to Achieve CMM Designation

Eric Johnson, CMM, CMP, Director of Conferences and Meetings, Meeting Professionals International, is the first D/FW Chapter member to achieve the Certification in Meeting Management (CMM) designation.



Eric Johnson, CMM, CMP
MPI Director of Conferences and Meetings

Johnson is among six MPI members who recently achieved this designation.

The CMM program, MPI's first global certificate program, is open to all meeting professionals and consists of a self-assessment, home study, residency courses, tests and exams. Obtaining the designation is one of the highest forms of recognition in the meeting profession.

In 1995, the initial CMM program was introduced to the European meeting industry to address the needs of experienced planners and to educate experienced suppliers on planner issues.

The structure, content and format were developed by an MPI Task Force in Europe. The CMM coursework is the first university-endorsed educational program for the European meeting industry.

After thorough study and market analysis, MPI determined that the CMM program should be adapted for meeting professionals worldwide.

The new global CMM program is the result of four years of extensive research and program development. It is a senior-level program which is strategic in nature, as opposed to tactical.

Other members earning the CMM designation included: Herve Bosquet, CMM, ICSA Conferences, Belgium; Marianne Demko, CMP, CMM, Wyeth-Ayerst Research, United States; Antonio Ducceschi, CMM, Park Hotel Ravenna,

Italy; Ingrid Marti, CMM, F Hoffman-La Roche Ltd., Switzerland; Trine Steffensen, CMM, International Conference Services A/S, Denmark; and Rineke Marley-Staal, CMM, Marley-Staal Associates, United Kingdom.

Did you know? . . .

MPI represents leading meeting professionals who arrange and manage meetings, conferences and trade shows for the \$82.82 billion meeting industry.

On average, MPI planner members are individually responsible for managing seventy-eight (78) meetings per year with an annual meeting budget of more than \$1.4 million.

MPI members collectively account for a total of 810,662 meetings per year representing annual expenditures of \$10.9 billion.

Meetings Industry Web Sites

www.all-hotels.com
eventsource.com/
www.eventcal.com/
w3.eventseeker.com/
www.iacvb.org/
www.site-intl.org/
www.meetingsnet.com/
www.expoweb.com/

These sites are just a few among hundreds collected by Corbin Ball, CMP, technology speaker, consultant and writer for the meetings and hospitality industries.

Others from Ball's extensive list of favorite industry web sites will be periodically included in the newsletter.

Corbin Ball, CMP
corbinb@earthlink.net
360-734-8756

July Meeting Highlights

True Colors and MPI—a Great TEAM!

MPI D/FW Enjoyed a Lively Reception, Meeting at Brookhaven Country Club

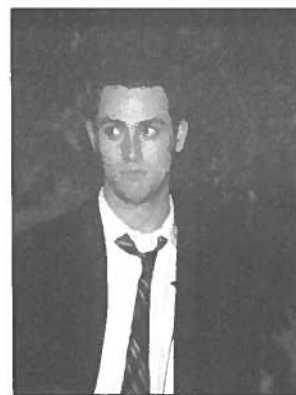


True Colors Troupe Encourages TEAM Involvement



**Photos
by
VISTA**

Photos by VISTA





**Checks Presented to
98 TMKCB Recipients
related story on page 10**



Hall of Fame

Please salute the following companies and individuals for their contributions to the July meeting at Brookhaven Country Club.

Featured Speaker
TRUE COLORS, Inc

Facility, Reception, Luncheon
Brookhaven Country Club

Centerpieces
Fun Factory
Delinda Dudley

Colorful Table Covers
Freeman Decorating
David Gisler

AV Services and Video Production
AVHQ
Rob Keating

Airline Transportation
American Airlines
Linda Armand & Velvet Benzamine

Hotel Accommodations
OMNI - Park West
Patricia Foley

Ground Transportation
Super Shuttle
Donna Johnson

Strolling Magician
Entertainment Alliance
Marty Westerman

Transportation for Arlington/Fort Worth Members
Dipert Coaches
Dan Dipert, Jr.

July Program Committee
Betty Garrett, CMP
Garrett Speakers International

Patti O'Neil
Conference Planning Inc.

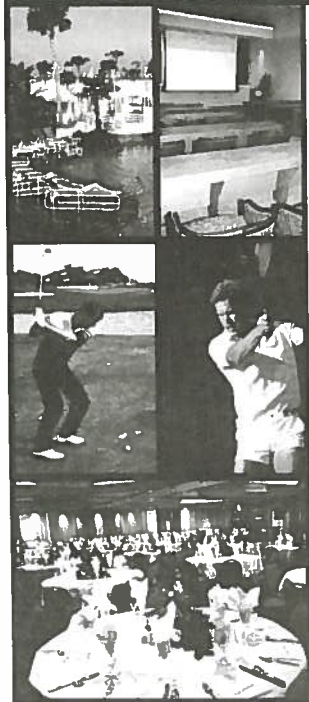
Randie Charnes
NCR Corp

Anna Squire
Hackberry Creek Country Club

Brookhollow Country Club Hosts
Amy Misenhimer
Ashley Elmore

The Future Promises Ways to Have More Productive Meetings.

We decided not to wait.



Research shows that the more successful meetings incorporate features offered at a variety of locations. We put them together at one place.

- **Anticipate meeting planner's needs**
Professional meeting staff, outstanding price/value, personal service, business center
- **Match the meeting venue to the needs**
18 meeting rooms, 1,000 capacity ballroom, amphitheater
- **Provide facilities conducive to success**
250 rooms, special Executive Floor, three restaurants, team-building course
- **Surround delegates with planned diversions**
Golf course, tropical pool/swim-up Cabana Bar, indoor/outdoor tennis, water sports

For information, site visit, call our Sales Department: **(281) 334-1000**
www.sshr.com e-mail: SSHRSales@ghg.net

Now in its 10th year of service to meeting planners.

 **South Shore Harbour Resort & Conference Center**
2500 South Shore Boulevard • League City, Texas 77573

Between Houston and Galveston, across Clear Lake from NASA/LBJ Space Center

Managed by Gal-Tex Hotel Corporation

The MPI Kids Charity Ball 1998 Raises \$153,266

By Cheryl L. Beasley, CMP
SABRE
Chair, 1998 TMKCB

MPI D/FW Chapter has once again shown the strength of its commitment to education, professional growth and its community through The MPI Kids Charity Ball.



The MPI Kids Charity Ball

Produced by Meeting Professionals International
Dallas/Fort Worth Chapter

The total amount raised through this Community Services project was \$153,267.50 or nearly \$20,000 over last year's success.

With all expenses paid, the beneficiaries of the Ball received a distribution of \$83,444.18. The distribution between the six beneficiaries varied this year because of the "Direct Distribution" plan. The plan was implemented this year to encourage the beneficiaries to support the Ball within their own organizations.

Presented during the July Chapter meeting were the following checks: Love For Kids, \$ 18,336.53; Weekend to Wipe Out Cancer, \$13,561.53; Genesis Women's Shelter, 13,586.53; Bryan's House, \$12,586.53; Our Friends Place, \$12,586.53; and Richland College Scholarship Fund, \$12,586.53

The distribution of beneficiary checks at the July chapter meeting brings to close a year of planning and commitment from many chapter members. The success of the Ball, and the financial reward to these beneficiaries, would not be possible without the dedication of the many Kids Ball Committee members.

See related photos on pages 8-9.

An Exceptional Adult Education Experience

INSTITUTES I & II
1998

Two customized, integrated certificate programs for Meeting Management

October 25 - 29, 1998

Banff Springs Hotel
Banff, Alberta, Canada

For more information and registration materials, call
1.972.702.3051

MPI
MEETING PROFESSIONALS INTERNATIONAL
Committed to Educational Leadership



M.T. Hickman
Richland College
'Grapevine' Columnist

Heard it through the Grapevine!



Mitchell Cathey
Palomino
'Grapevine' Columnist

Allyson Ashley, CMP, national accounts manager, *DFW Lakes Hilton*, and her husband Merrell are expecting their first child on Christmas Day.

Kathy Brixey and her husband are the new owners of *The Beach Club*.



Dena Carr, daughter of Susie Carr-Tennison, (Annuity Board of the Southern Baptist Convention), recently was named Supplier of the Year for the Society of Government Meeting

Professionals NATCAP Chapter. She is sales manager for the *Dallas CVB* in the Washington, DC office.

Joan Henderson is the new senior sales manager—northeast regions, *Wyndham Anatole*.

Katherine Hines, formerly with The Melrose Hotel, accepted the position of sales manager, *Omni Park West*.

Deb Muzynski, corporate sales manager, *Dallas CVB*, and her husband Mark are the proud parents of Samuel Oleg Muzynski, a two-year-old from the Ukraine.



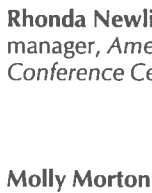
Charlotte Merrill-Davis, CMP, president, *Event Source Professionals (ESP)* announced that for the second consecutive year ESP was named as one of the 20 fastest growing businesses in the Hurst-

Euless-Bedford area by the HEB Chamber of Commerce.

Cindy Watters, meeting planner, *I.M.A.G.E.*, has returned to work after having surgery on her neck. Although a little stiff, she expects a full recovery.



Steve Kemble, *Steve Kemble Event Design*, was elected to a three-year term on the International Special Events Society (ISES) International Board of Governors.



Rhonda Newlin was promoted to sales manager, *American Airlines Training & Conference Center*.

Molly Morton accepted the position of national account manager, *Hotel Adolphus*.



Colleen Rickenbacher, CMP, vice president special events, *Dallas CVB*, was recognized by her peers as best committee member for the MPI International Education Committee.

John Roach, formerly with *Omni Austin Hotel Southpark*, moved to Dallas to accept the position of director of sales, *Omni Mandalay Hotel* at Las Colinas.



Gail Lemaire is the new national sales manager for *Inter-Continental Hotel Dallas*.



Lisa South, CMP was promoted to manager, meetings, events and expositions at *Computer Language Research* and is responsible for the newly-created Meetings, Events & Expositions department.



Linda Swindling, mediator/attorney/consultant, *Withrow Schraeder & Swindling*, received the Presidential Award from the National Speakers Association for her outstanding service to the NTSA



Marsha Singer, *Dallas Directory, Inc.*, was elected to the Board of Directors of the North Texas Film Commission.

"Pictures! Head shots! We need them!" say *CURRENT* Editor **Gracie Hilton** (*The Write Stuff*) and Managing Editor **Kristi Carter** (*J&S Audio Visual, Inc.*).

If the *CURRENT* does not have your photo on file, mail one to Gracie Hilton, (3020 Glasgow Court, Arlington, TX 76015).

Want your photo returned? Don't forget to include a self-addressed, stamped envelope!

Keep up with personal news about fellow MPI chapter members—job changes, promotions, awards or special recognitions, weddings, or births—through "Heard it through the Grapevine."

Please contact M.T. Hickman (Richland College) or Mitchell Cathey about items of interest for this column.

Hickman can be reached at 972-238-6097; fax 972-238-6333, or mthickman@dccc.edu

Cathey can be reached at 214-999-1222; fax 214-999-1115.

Please submit photo ("head shot") with your news item.

September Meeting Focus

Meal Functions and How They Can Help Achieve Meeting Goals

By Dana Nickerson, CMP
Square One Productions

At the September 23 dinner meeting at Doubletree Lincoln Centre, a panel of caterers, special event production specialists, hospitality staffing, and unique decor and venue specialists will focus on how meal planning can help achieve meeting goals.

The panelists will offer ideas and commentary on a myriad of questions facing

the meeting professional who knows that every meal function is more than simply "feeding the masses."

Meal planning is not chicken anymore!

Buffet or plated dinner? Place cards, table numbers or open seating? Passed hors d'oeuvres or self-serve? Does the bottle of wine go on the table or is it served?

How comfortable are the chairs? How long are the guests going to be seated? Are they acquiring too much "stuff" to carry and where are they going to put it on a table filled with more "stuff"?

One or two dance floors? How many stages? Where should the guests enter the room? What about all of those special meal requests? How many wait staff per table? Stay at the hotel or go off-site? How far away is too far?

Have the guests come from various time zones? Can 1,000 people be served baked Alaska?

Is the program designed for networking, sharing of new ideas or learning about a new product?

Are you trying to create customer loyalty, educate participants or reward people for something? Do the guests know one another or are they coming

together as strangers?

Breakfast sets the tone for the entire day. It can be used to create enthusiasm for something yet-to-come, such as the evening's event or a new product. Coffee breaks are an opportunity to carry through on theme and goals.

Choosing cocktail receptions or dinner venues are especially challenging. Are your guests allowed any free time? Do they prefer a night on their own? Going off-site can allow guests a great opportunity to see the sites of an unfamiliar city.

These are but a few of the topics that will be discussed at the September meeting.

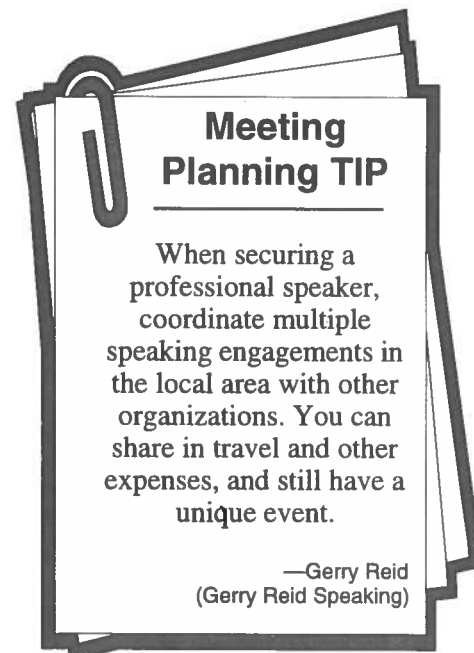


Carol Marks Music & Entertainment Agency

We book bands committed to delivering outstanding professional performances for corporate & private engagements!



615 Business Pkwy • Richardson, TX 75081
972-231-4091
carolmarksmusic.com



Meeting Planning TIP

When securing a professional speaker, coordinate multiple speaking engagements in the local area with other organizations. You can share in travel and other expenses, and still have a unique event.

—Gerry Reid
(Gerry Reid Speaking)

Wanted: Corporate Planners

Due to numerous requests by program participants, members with corporate planning experience are needed for involvement in the **Connections...a meeting of the minds** Program. Less than two hours a month is all that is needed to tap into this incredible D/FW Chapter resource. Please call Pat McCain, CMP, Krisam Hotels & Resorts at 972.458.8692 (or e-mail: pat_mccain@krisam.com) to sign up today!

Seeking Bids for Services to MPI D/FW Chapter

- Printing Services
- Mailing House Services
- Chapter Secretarial Services

MPI D/FW bids out services regularly because, whenever possible, we like to do business with our members.

Printing: various needs such as the monthly newsletter, *CURRENT*; programs for special events, chapter stationery, etc. Contact Director of Chapter Communications Kristi Carter, 972-241-5444; fax 972-247-2590, or E-mail, KRISTIC@aol.com.

Mailing House Services: for fulfillment of the monthly newsletter and inserts. Contact Director of Chapter Communications Kristi Carter, 972-241-5444; fax 972-247-2590, or E-mail, KRISTIC@aol.com.

Chapter Secretarial Services: Contact V.P. Administration Linda Vest, CMP (State Farm Insurance), 972-732-5970.

MPI

MEETING PROFESSIONALS INTERNATIONAL®
Committed to Educational Leadership

Dallas/Fort Worth Chapter

Legendary Event Excellence!



Star in your own award-winning event at Southfork! With over 63,000 square feet of indoor event and meeting space, we can help you direct events for 10 to 10,000. Creative event themes, full-service catering, along with decor and entertainment planning make us the perfect location for your next meeting or special event. Our cast of characters is famous. Our service is legendary. Let us make your next event a true "Dallas" production.

Southfork 20^{years}
R A N C H
DALLAS • TEXAS

P.O. Box 516009 • Dallas, TX 75251 • 972-442-7800 • FAX 972-442-5259



Betty Garrett, CMP
President
Garrett Speakers International, Inc.



"The Certified Meeting Professional designation is the professional certification indicating a commitment to excellence in the meeting planning profession. It offers the meeting professional the same respect as that afforded to CPAs and CLUs in the accounting and insurance fields plus giving you the competitive advantage when seeking employment."

Community Services: Ready to Roll! ...or Walk, that is!

The MPI D/FW Chapter Community Services Committee has some exciting programs planned for 1998-99, beginning with the Aids Lifewalk October 4. Be sure to come by the PR and Marketing booth in the Chapter Resource Center for applications and information. And, be watching for the Community Services insert in the September newsletter. Community Services Chairs Stephanie Schroeder (ITT Sheraton Corporation) and Delinda Dudley (The Fun Factory Decorations) want member input on community projects that will get you up and out. If you want to serve on the Community Services committee or any of the great PR and Marketing committees, call Marsha Singer (The Dallas Directory, Inc.) VP of PR and Marketing at 214-823-4370. Come join a team that will be making a difference in our community this year!

Meetings Industry Associations

The following associations provide education for meeting professionals at local and national levels.

American Society of Association Executives
202-626-ASAE

International Association of Conference Centers
314-993-8575

International Association of Convention & Visitors Bureaus
202-296-7888

International Special Events Society
202-828-1982

Meeting Professionals International
972-702-3000

Professional Convention Management Association
205-823-PCMA

Religious Conference Management Association
317-632-1888

Society of Corporate Meeting Professionals
408-649-6544

Society of Government Meeting Professionals
717-795-7467

Society of Incentive & Travel Executives
212-575-0910

MPI International Leadership MPI D/FW Chapter Members Appointed to International Committees

The MPI D/FW Chapter is represented by the following members at the International level with the recent appointments to International Committees.

Elizabeth A. Baryshev (CompuCom)
Special Interest Group Advisory Council

J. William (Bill) Boyd, CMP (Sunbelt Motivation & Travel, Inc.)
International Awards Committee

Phyllis Firebaugh, CMP (SEI Incentives)
International Awards Committee

Sandi Galloway (Canadian Consulate)
Green Meetings Task Force

William (Bill) R. Gilchrist, (Dolce International)
Chair, International Chapter Leadership Committee

Sally Goldesberry, CMP (Meeting & Exhibit Specialists)
International Board of Directors

Dana Nickerson, CMP (Square One Productions)
International Chapter Leadership Committee

Mary Lynn Novelli, CMP (Sterling Hotels and Resorts)
International Representative for the International Chapter Leadership Committee—
MPI Board of Directors

Mollie S. Wallace, CMP (Planning Professionals, Inc.)
International Awards Committee

Any MPI member is eligible to apply for appointments to committees annually. Applications are distributed in the *Meeting Professional Magazine* in early spring.

MPI D/FW Mailing List and Labels For Sale



Do you want to...

- Promote your business or service?
- Market specifically to planners? or suppliers?

The MPI D/FW mailing list, which consists of approximately 800 meetings professionals, can be purchased in ready-to-mail label format. The list, which is updated monthly, is sorted alphabetically, or by planner or supplier categories.

The cost is \$150 for MPI D/FW members; \$250 for members of other MPI Chapters; and \$300 for non-members.

To order, contact the MPI D/FW Chapter office, 972-233-9107 x203.

(Note: it is against copyright laws to reproduce the MPI Directory in any format.)



A UNIQUE TWIST ON GROUP THERAPY.



Be it a group of 25 or 1,000, our world-class horse racing facility is the place to entertain. We have options such as Box Seats, Penthouse Suites, landscaped outdoor areas and a trackside dining terrace, all of which are available for charitable events, social gatherings or corporate functions. It'll do more for your group's collective psyche than all the psychiatrists in Vienna. For more information about group entertainment, please call Mike McCoy.



LONE STAR PARK
at Grand Prairie

*North of I-30 on Belt Line,
For more information, call 972-263-RACE.*

MPI

MEETING PROFESSIONALS INTERNATIONAL®

Committed to Educational Leadership

Dallas/Fort Worth Chapter
4020 McEwen • Suite 105
Dallas Texas 75244

FIRST-CLASS MAIL
U.S. POSTAGE
PAID
DALLAS, TX
PERMIT NO. 1930



DALLAS/FORT WORTH CHAPTER

Del Lago, Texas' preferred conference destination, offers the perfect setting for your next meeting. Nestled among 300 acres of majestic pine and oak trees on 22,000-acre Lake Conroe, Del Lago features 60,000 sq. ft. of meeting and function space, a 21 story lakeside tower with 310 Texas-size suites, 45 golf course and lakeside villas, an 18 hole championship golf course, tennis, marina, fresh water beach, health spa and a challenging ropes course. Call us or visit us on the internet to find out more about Del Lago - your perfect place to **Get Away & Get Ahead!**

 **DEL LAGO™**
GOLF RESORT & CONFERENCE CENTER

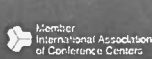
Just North of Houston on Lake Conroe

1-800-DEL LAGO

600 Del Lago Blvd. Montgomery, Texas 77356-5349
www.dellago.com e-mail DellLago@DelLago.com



Get Away & Get Ahead. Del Lago!



Off the Wall!
Professional Training Services