



[MPI Heartland Chapter](#) Newsletter: October/November/December 2023

Heartland Chapter Annual Meeting: Anything is Possible!



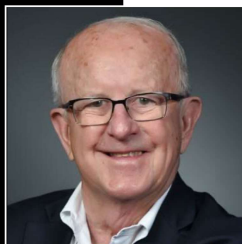
[Register Now](#)

Thriving in the Midst of Challenges

How can planners and suppliers work together for mutual benefit? What are the keys to overcoming burnout? How can we thrive in the midst of change?

We work in a fast-paced and dynamic industry that poses unique challenges. This day is dedicated to exploring solutions and discovering new approaches where anything is possible!

Meet the Speakers!



Jonathan Howe, Esq.

Founding Partner and President,
Howe & Hutton, Ltd.

Session Title

The Legalities of Booking Meeting, Convention and Event Business in a Post COVID World.

Session Description

COVID-19 reset the clock on how events respond to disasters. The aftermath has resulted in a new reality, most particularly in the event legal arena. Speaker Jonathan Howe, Esq is recognized worldwide as one of the leaders in that arena. This session will give you a heads up of what to do and not do from a legal perspective. Bring your questions and issues and be part of this interactive session.



Dr. Lalia Rach

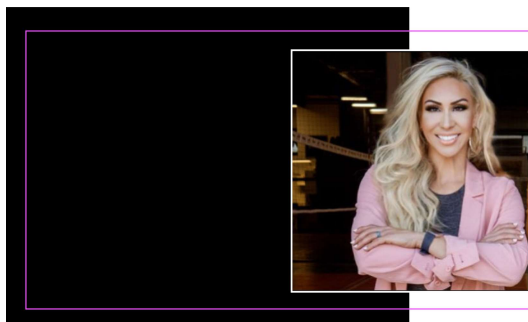
Executive Managing Director Strategic
Consulting Services, a division of ALHI

Session Title

Moving Forward in an Era of Continuous Change

Session Description

Everyday meeting professionals are being asked to do even more with even less. Clients expect responses and ideas that are different, better, and seemingly immediate. A daunting task with no end in sight. Now is the time to shift your focus and stop looking for “the” answer and instead begin connecting challenge to opportunity, to identifying patterns in the change that you can use to your advantage. In a fast paced and entertaining style, Dr. Rach will describe trends and realities impacting your success in an era of continuous change.



Maggi Thorne

CEO and Founder,
JoyFlowCo

Session Title

Never Give Up

Session Description

In this compelling presentation, Maggi Thorne, a seasoned project manager, delves into the critical intersection of project management and burnout, drawing from her extensive experience in the field. With a keen understanding of the challenges that project managers face, Maggi provides valuable insights into recognizing, preventing, and addressing burnout within the context of project management.

Heartland Connection

Join us on **November 13 for dinner, drinks, and the opportunity to serve.** We are partnering with No More Empty Pots to join in their efforts to improve self-sufficiency, food insecurity, and economic resilience. Come and fill a pot, enjoy dinner, and catch up with old and new friends.

Monday, November 13, 2023

The Venue at Highlander

2120 N 30th Street

Omaha, NE 68111

[Read More](#)


As a way to celebrate our membership, MPI Heartland Chapter is doing a regular Member Spotlight post on our social media. If this is something you are willing to do, please complete the survey below.

Please contact membership@mpi-heartland.org with any questions!

[Begin Survey](#)

WE NEED YOU!

The MPI Heartland Chapter is growing right along with MPI Global. With this growth, we are looking for you to step up to be more involved in our association. Here are just a few ways you can do that!

Board Member

Board term will be July 1, 2024 to December 31, 2025. Available positions in the "Fun"ance and Membership teams.

Committee Volunteer

Help us with planning the Annual Meeting or one of our Chapter Meetings; proof the newsletter; the list goes on!

Membership Recruitment

You know the value of being a MPI member, help us continue to spread the word (and get paid to do so!)

Message from the President



Julie Kronlage
Vice President of Sales, Travel Dubuque
MPI Heartland President 2023-2024

Mark Your Calendars Now!



Membership Meeting

January 18, 2024
Prairie Meadows
Altoona, IA

Membership Meeting

March 28, 2024
The Omaha Marriot Downtown at
the Capitol District
Omaha, NE

Global Meetings Industry Day

April 11th, 2024

Virtual



When a NEW MEMBER uses an existing member's number as a referral during their registration:

New Member has \$50 Application Fee **WAIVED**

Referring Member gets \$25 off of future renewal

Referring Member gets \$50 CASH

With hundreds of hours of free education for MPI members, the **MPI Academy** is your one-stop shop for meeting planning and event industry skills training, CE credits and certificate courses. Featuring online and in-person classes and webinars, it's the perfect resource for the job you have - or the job you want.





A special offer for our members! The Kansas City, Chicago Area, Indiana, St. Louis, Heartland (Nebraska/Iowa) and Oklahoma Chapters of MPI are partnering on a promotion to offer [Affiliate memberships at our chapters for a discount!](#)

This gives you access to each chapters' education events, social events, and member databases to name a few!

We're always looking for ways to provide the support and resources you need to advance your career.

With the new [MPI Career Center](#), you can move forward stronger than ever with a more intuitive job search, salary and job growth insights, resume evaluations and real-time alerts when jobs become available.



Thank you to Our Annual Partners!






HOTEL JULIEN
 DUBUQUE

Experience this remarkable boutique hotel offering the area's most elegant accommodations and impeccable service in the heart of the historic Old Main District.



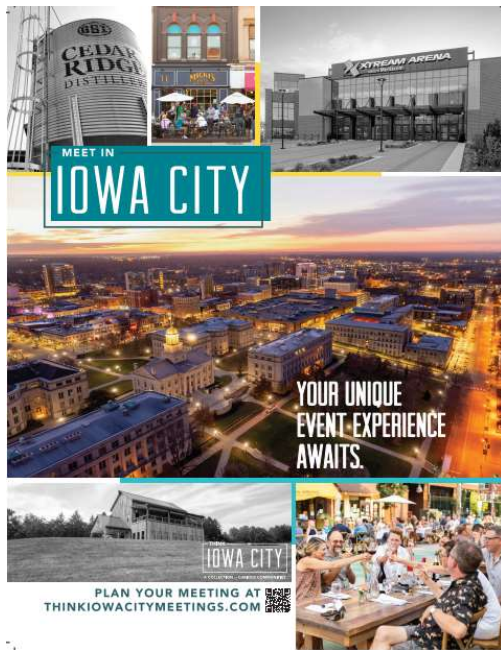
200 MAIN STREET • DUBUQUE, IA 52001 • 563.556.4200 • WWW.HOTELJULIENDUBUQUE.COM

IN PARTNERSHIP WITH 



LITTLE BIT OF *This.* LITTLE BIT OF *That.*

 More than the meeting.
MEETDUBUQUE.COM



Sponsorship Opportunities



Follow us on Social Media

Facebook

Twitter

Instagram

Sincerely,

MPI Heartland

heartland@dri.org

If you no longer want to receive emails from MPI Heartland, please [Opt-Out](#).

powered by
cvent