



**KENTUCKY
BLUEGRASS**
CHAPTER



CHAPTER VOLUNTEER OPPORTUNITIES

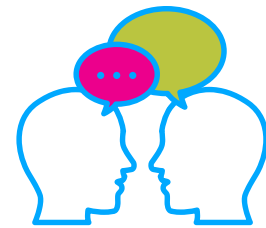
THE BENEFITS OF VOLUNTEERING

When you donate your time, skills, energy and enthusiasm to MPI Kentucky Bluegrass Chapter - you benefit too!

SKILLS YOU CAN LEARN OR PRACTICE



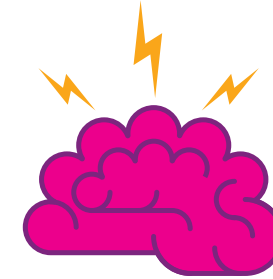
Organization



Communication



Teamwork



Brainstorming
Solutions



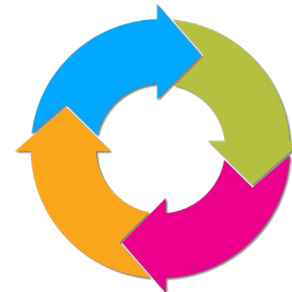
Collaboration



Industry
Awareness



Leadership



Adaptability



Networking



Responsibility

Through volunteer roles, MPI members forge meaningful connections, take leadership roles, and contribute to the industry and our local chapter.

EVENT MARKETING COORDINATOR

Have a passion for the events and education MPI KBC provides and want to help shout it from the rooftops? Then this position is for you! The goal of this role is to help create marketing buzz to increase attendance at our chapter events. Estimated Monthly Time Commitment = 4 hours

EVENT PAPARAZZI

You don't have to be a photographer to take a good picture these days! If filters and good angles are your jam, volunteer to be one of our Event Paparazzi! You'll need to regularly attend chapter events to take photos and then upload them so the Communications team can use your images. Estimated Monthly Time Commitment = 1 hour + time at live events

TECHNICAL COORDINATOR

Are you a technology wiz? Or ... are you looking to learn more about technology? Work with the Education & Events Team and our sponsoring venues and vendors to help coordinate the technology needed to pull off top-notch events! Estimated Monthly Time Commitment = 1-3 hours + time at virtual and live events

ACTIVITY COORDINATOR

Do you believe that an engaged audience is a happy audience? Well ... so does our Education & Events Team! We're looking for a detail oriented, creative volunteer to help brainstorm with the team and then execute the activities at our chapter events. Estimated Monthly Time Commitment = 1-3 hours + time at virtual and live events

SPEAKER LIAISON

Are logistics and VIP Coordination your thing? The Speaker Liaison will assist the Director of Education with speaker management . You'll be the official greeter for the speaker and make sure they have everything they need. Estimated Monthly Time Commitment = 1-3 hours + time at live events

"Great things in business are never done by one person. They're done by a team of people." - Steve Jobs

EDUCATION & EVENTS

DONATION COORDINATOR

MPI KBC has great support throughout our state and other areas of the country. We're looking for volunteers to help identify Vendors, Companies and Venues who are interested in donating items and experiences to the chapter for our fund-raising raffles and auctions. Estimated Monthly Time Commitment = 2 hours (time commitment will increase leading up to a large auction)

"Volunteers do not necessarily have the time, they just have the heart." - Elizabeth Andrew

MEMBER SPOTLIGHT COORDINATOR

If you're a writer at heart and are passionate about celebrating our amazing members, this role is for you! Schedule and conduct interviews with members that have been chosen for the 'Member Spotlight'. Write the article and provide the Communications Team with everything they need to share the story. Estimated Monthly Time Commitment = 2 hours

RAFFLETIER (and yes, we may have made this word up)

What a great way to meet everyone at our events. You'll need to regularly attend chapter events so you can walk around introducing yourself to all of the attendees while hyping up our raffle items and selling raffle tickets. You'll also get to draw the winners of each live raffle. Estimated Monthly Time Commitment = 3 hours during months there are live events

NEWSLETTER REPORTER

We're looking for volunteers that like to have their finger on the pulse of Kentucky's event industry and know who the movers and shakers are in our chapter. Good writing skills and a knack for creating catchy taglines would be helpful. Estimated Quarterly Time Commitment = 6 hours per each quarterly newsletter

WEBSITE AUDITOR

Don't worry, you don't need to know how to update the website, but we need some eagle eyes to click through our website monthly to make sure it's up to date and has helpful information for anyone that visits the site. You'll communicate any needed or suggested updates to the team to implement. Estimated Monthly Time Commitment = 2 hours

FINANCE & COMMUNICATIONS

MEMBER RECRUITMENT

Do you believe in MPI's mission and the benefits of membership? Be our chapter's ambassador by recruiting new members via phone, email and in person. Identify new ways to target prospective members to increase the overall membership for the chapter. Estimated Monthly Time Commitment = 2 hours

MEMBER CARE

Taking care of our members is a priority! We're looking for volunteers to connect with members on a regular basis to make sure they are getting what they need out of their membership. You'll be the advocate for our members by sharing any feedback you receive with the VP of Membership. Estimated Monthly Time Commitment = 2 hours

"Service to others is the rent you pay for your room here on earth." - Muhammad Ali

"An organization, no matter how well designed, is only as good as the people who live and work in it." - Dee Hock

NEW MEMBER LIAISON

Think of yourself as the Welcome Wagon of the chapter. The New Member Liaison is responsible for welcoming all new members and being the point of contact for the entire first year of membership to help mentor the person to use MPI membership to its fullest potential. Estimated Monthly Time Commitment = 2 hours

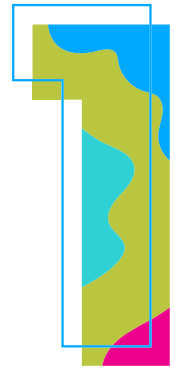
SPECIAL PROJECTS VOLUNTEERS

Not quite sure you commit to champion one volunteer position throughout the entire year? We're always looking for member volunteers to jump in and assist with short term special projects. Does this sound like a better fit for you? Let us know and we'll place you on the Special Projects Volunteer list that our board uses when we need extra hands to help out the chapter!

MEMBERSHIP & SPECIAL PROJECTS

WHAT'S NEXT?

If you are ready to get engaged in the MPI KBC chapter by volunteering, follow the steps below.



Ask yourself ..
What are my skills?
What are my strengths?
Where can I make an impact in the Chapter?



Contact us at
info@mpikbc.org to let us know you are interested in volunteering.
We love to hear from our members!



We'll connect you with the Education & Events, Finance, Communications or Membership Team to answer any questions you have and make it official!

Volunteer role service terms typically begin in July (when we induct our new Board of Directors each year) and run through June of the following year.

However, we're flexible and are excited to have members engage at any point within the term.

HAVE QUESTIONS?

If you have more questions or are not quite yet sure how you can best impact our MPI KBC chapter, contact us and we will help you determine the best way to start your volunteer journey.

info@kbcmpi.org