

# MPI-WISCONSIN CHAPTER Agenda

MAY  
JUN  
VOL 46/NUM 3  
2024

  
*Top Performing*  
CHAPTER AWARD



MPI

**WISCONSIN**  
CHAPTER

"MPI-WI Chapter is the bridge to knowledge, compelling ideas, and relationships to create a voice in the meetings and events industry."



# TWO PROPERTIES, ENDLESS POSSIBILITIES

Book your meeting at The Madison Concourse Hotel or The Ingleside Hotel!



## THE MADISON CONCOURSE HOTEL

AND GOVERNOR'S CLUB



You can do a lot with 27,000 square feet of meeting space. **The Madison Concourse Hotel and Governor's Club** is the largest convention hotel in Madison. The modern, flexible space is perfect for everything from large conventions to small strategic planning sessions, and it's located in the heart of downtown Madison, steps from dozens of shops, restaurants and entertainment venues.

1 W Dayton St, Madison WI • 800 356 8293 • [concoursehotel.com](http://concoursehotel.com)



With over 40,000 square feet of meeting space, 20 private event venues, and 40 breezy outdoor acres, **The Ingleside Hotel** offers a refreshing change of pace from conventional destinations. Come experience Lake Country hospitality at its natural, vibrant best. Plan your next event in the flexible, unique space and enjoy an inspirational setting unlike any other in the Milwaukee area.



THE  
INGLESIDE  
HOTEL

2810 Golf Rd, Pewaukee WI • 800 247 6640 • [theinglesidehotel.com](http://theinglesidehotel.com)

# MPI-WISCONSIN 2023-2024 BOARD OF DIRECTORS

PRESIDENT  
REGGIE DRISCOLL, CMP  
State Bar of Wisconsin  
[rdriscoll@wisbar.org](mailto:rdriscoll@wisbar.org)

PRESIDENT-ELECT  
LIZ UNRUH  
Positively Pewaukee  
[liz@positivelypewaukee.com](mailto:liz@positivelypewaukee.com)

IMMEDIATE PAST PRESIDENT  
REBECCA STAATS  
Residence Inn & Fairfield by Marriott Eau Claire  
[rebecca.l.staats@gmail.com](mailto:rebecca.l.staats@gmail.com)

VICE PRESIDENT OF MEMBERSHIP  
ELIZABETH POH  
La Crosse Center  
[epoh@lacrossecenter.com](mailto:epoh@lacrossecenter.com)

VICE PRESIDENT OF FINANCE  
SARA BEUTHIEN  
WEDC  
[sara.beuthien@wedc.org](mailto:sara.beuthien@wedc.org)

VICE PRESIDENT OF COMMUNICATIONS  
KORTNEE CARROLL  
Kalahari Resorts  
[kocarroll@kalahariresorts.com](mailto:kocarroll@kalahariresorts.com)

VICE PRESIDENT OF EDUCATION  
AMY QUALMANN  
Wisconsin Association of School Boards  
[aqualmann@wasb.org](mailto:aqualmann@wasb.org)

DIRECTOR OF SPECIAL EDUCATION PROJECTS  
JACOB ADAMSKI  
Stevens Point Area CVB  
[jacob@stevenspointarea.com](mailto:jacob@stevenspointarea.com)

DIRECTOR OF SPECIAL EVENTS  
CARRIE BERGER  
National Fluid Power Association  
[cberger@nfpa.com](mailto:cberger@nfpa.com)

DIRECTOR OF STRATEGIC PARTNERS & SPONSORSHIPS  
ED BUCHNER  
Majic Productions  
[ebuchner@majicpro.com](mailto:ebuchner@majicpro.com)

DIRECTOR OF MEMBER CARE  
JODY ROOS  
Wisconsin Bankers Association  
[jroos@wisbank.com](mailto:jroos@wisbank.com)

DIRECTOR OF AWARDS, SCHOLARSHIPS & RECRUITMENT  
KATHY READING  
The SCAN Group  
[reading@scangroup.net](mailto:reading@scangroup.net)

DIRECTOR OF PUBLICATIONS & SOCIAL RESPONSIBILITY  
CHERYL OSWALD  
CNH Industrial  
[cheryl.oswald@cnhind.com](mailto:cheryl.oswald@cnhind.com)

DIRECTOR OF DIGITAL COMMUNICATIONS  
GRETA MCCUE  
Hyatt Regency Milwaukee  
[greta.mccue@hyatt.com](mailto:greta.mccue@hyatt.com)

DIRECTOR OF MONTHLY PROGRAMMING  
LINDSEY HESS, CMP  
UW-Madison  
[lhess@highroad.wisc.edu](mailto:lhess@highroad.wisc.edu)

# MPI-WISCONSIN CHAPTER Agenda

MAY/JUNE 2024  
VOL 46 / NUM 3

## Feature Articles

August Event Preview	8
WEC Preview	11
March Education Event Recap	13
Spring Spectacular & Education Day Recap	16
Rise Award	21

## In Every Issue

Editor's Note	4
President's Message	6
Food for Thought: Chef Jenny Hochschild	9
Who's in the News	22
Anniversaries / New Members	23
Board Member Profile: Lindsey Hess, CMP	25
Planner Profile: Tyler Priefer	26
Supplier Profile: Terri Bain	27
Volunteer Spotlights: Greta McCue, Cheryl Oswald, Tyler Priefer, Maria Peot, CMP	28
Save the Date	29

## Experience MPI Wisconsin

**Print:** *Agenda* Magazine

**Web:** [mpiweb.org/Wisconsin](http://mpiweb.org/Wisconsin)

**Facebook:** [facebook.com/mpiwi](https://facebook.com/mpiwi)

**LinkedIn:** [MPI-WI Chapter](https://www.linkedin.com/company/mpl-wi)

**Instagram:** [https://instagram.com/mpi\\_wi\\_chapter](https://instagram.com/mpi_wi_chapter)

## 5 Different Ways



**WISCONSIN**  
CHAPTER

4075 Vilas Road  
Cottage Grove, WI 53527  
**tel:** 608.204.9816

**fax:** 608.204.9818  
**email:** [admin@mpiwi.org](mailto:admin@mpiwi.org)  
**web:** [www.mpiweb.org/wisconsin](http://www.mpiweb.org/wisconsin)



Published bimonthly by  
Meeting Professionals International –  
Wisconsin Chapter

#### EDITORS

Tyler Priefer  
Generac Power Systems  
[tyler.priefer@generac.com](mailto:tyler.priefer@generac.com)

Maria Peot, CMP  
Zywave  
[maria.peot@gmail.com](mailto:maria.peot@gmail.com)

#### CONTRIBUTING WRITERS

Tyler Priefer  
Reggie Driscoll, CMP  
Caley Mutrie, CAE, IOM  
Cheryl Oswald, CMP  
Lindsey Hess, CMP  
Terri Bain  
Shannon Timmerman, CMP

#### GRAPHIC DESIGN

Ann Shultz, AJS Designs

#### PUBLICATION DEADLINES

July/August 2024  
Deadline: June 15, 2024

September/October 2024  
Deadline: August 15, 2024

November/December 2024  
Deadline: October 15, 2024

#### PERMISSIONS

Material in this publication may not be reproduced in any form without permission.

Statements of fact and opinion within the **Agenda** are the responsibility of the author(s) and do not imply an opinion of the officers or members of MPI or MPI-Wisconsin Chapter.

## Editor's Note



### Where do sheep go on vacation? The Baaa-hamas!

A corny summer dad joke is needed to brighten the day. Do you have any vacations planned? Any family trips? Kid sports tournaments? I find traveling with your partner, family, or friends to be so important for your mental health. It is necessary to escape reality and enjoy a trip of laughs and memories with those you love. Life is too short to not explore the world!

I am so excited for the warm weather, outdoor events, and lake days to begin! At Generac, our summers are busy with several company events, but we have a blast putting them together. We host our golf outing, company picnic, and spend a lot of time on our stage at Summerfest. It turns into a busy summer, but it is always a good time seeing everyone. If you attend Summerfest, make sure to stop by the Generac stage. We always enjoy seeing and spending time with familiar MPI faces. In other words, see you there... POWER ON!

MPI has a lot to offer for the remainder of this year. We have WEC taking place in Louisville, a gathering in August, the awards gala in September, and a relaxing event in October at the Abbey Resort! I look forward to seeing what the planning committees put on for each event, and who the speaker team pulls in to be a part of our days. We have amazing and talented teams within MPI-WI. We are one lucky chapter.

As always make sure to reach out if you are interested in volunteering. MPI-WI has so many teams that are willing to take on new volunteers. It is a great opportunity to meet others, make connections, and create new friendships. If you don't know where to start, just ask!

Have a great summer!

*Tyler Priefer*





# LET'S CREATE YOUR VISION

We know just the place. Our world-class meeting and event center in the heart of Madison, Wisconsin, is home to 250,000 square feet of Frank Lloyd Wright-designed space – and every inch of it is customizable right down to the last detail. From award-winning catering to custom AV and staging setups, walkable restaurants and nightlife to breathtaking views, if you can imagine it, we can help orchestrate *your* incredible.



MONONA  TERRACE





# President's Message



## Hello to all MPI-WI members,

Our recent Spring Spectacular and Spring Education Day were not just successful, they were unique experiences that brought our members together in a special way. The fantastic turnout was a testament to the value of these events, and it was a pleasure to see both familiar and new faces in the crowd. As we look ahead, I'm excited to share that you'll receive three additional columns from me this year. Consider it a bonus!

This year has been fantastic; we had a great autumn and a busy spring season. Due to the MPI World Education Congress (WEC) schedule change, we rearranged our education sessions. We have never had events four months in a row, then WEC in May. I know it's a lot to ask of ourselves, our employers, and our families. We appreciate everyone's time and effort to make each event run smoothly and successfully. After

WEC in Louisville, we will have an in-person education event again in August. This will be a nice break for us, but we also want to make sure we keep motivated and involved. One way to do this is to join one of the committees that will be working on our future events. Your involvement is crucial to our success. Contact Lindsey Hess, our Director of Monthly Programming, at [lhess@highroad.wisc.edu](mailto:lhess@highroad.wisc.edu) to see what volunteer positions are available. We'd love to see new faces on the committees.

There is a quote from Booker T. Washington that says, "If you want to lift yourself up, lift up someone else." This quote has lifted me from time to time. It makes me realize there is more to focus on than what is happening to me at any specific time. This makes me look at others and see what I can do to help. During the months we don't meet in person (June/July), please reach out to another industry professional to share a smile or just let them know you're thinking about them. It can do wonders for your attitude. If they are a member, that's wonderful. If they are not a member, this could be the first step in offering them the opportunity to become members. Remember the excitement when you first joined and came to your first event. It is worth sharing with friends.

I am personally looking forward to seeing a great Wisconsin turn out at WEC in Louisville. If you are planning on going, we have a Facebook Messenger group set up so we can all communicate

together. Let me know if you are planning on attending but have not joined the Messenger group yet. There may be carpooling options also, so ask around and see who else is planning on attending. We hope that with the WEC in the Midwest for the next two years, our members will make an extra effort to attend this event. Meetings Michigan and Visit Canton will be hosting a GLES Reception on Tuesday night, May 21, at 5:15 p.m. at the Hilton Garden Inn Rooftop. See you there. Let me know if you want the RSVP link for this event. The invitation has been sent out to MI, WI, IN, OH, IL, and PA attendees.

During May and June, let's take some time to show some love and respect by celebrating Mother's Day and Father's Day. Give the kids an extra hug and celebrate if you're a mother or father yourself. And, yes, fur babies count.

Check out the event calendar on the back page for our upcoming education events. We finish the calendar year with August in Milwaukee, The Awards Gala in September at the Heidel House, and October at The Abbey Resort. Be sure to get these all on your calendars.

Looking forward to seeing you soon!! ▲

*Reggie Dinscall, CMP*







**YOUR CHOICE**



**EVERYONE'S  
CHOICE**

## THE CHOICE IS CLEAR

When it comes to what you need for a convention, we've got the numbers you're looking for, like 5,600 meetings a year, 500,000 square feet of meeting space, and over 900 guest rooms. More importantly, we have what you want. Shopping, golf, waterparks, restaurants, family fun, and so much more — all because we're in the business of having fun.

MeetInTheDells.com | sales@wisdells.com | (608) 253-5217

**Wisconsin  
Dells®**  
The Waterpark Capital of the World!®



# August Event Preview

SAVE THE DATE!!!

August 15, 2024 we will be holding our next education event! We will be at AMPED in Milwaukee with a hotel room block at the Brewhouse Inn & Suites. Mark your calendar and get ready for some education and fun in Milwaukee!!!



CHECK OUT FOOD FOR THOUGHT ON PAGE 9



## Meet in the Middle

Middleton, Wisconsin, is anything but ordinary. Choose from one of nine hotels, including the area's largest convention hotel, and enjoy one of our 80 cafés and restaurants, two shopping districts, award-winning brewery, local cidery, quirky attractions, and beautiful scenic spaces. Come discover why it's the *middle* things that will make your meeting memorable.



[meetinmiddleton.com](http://meetinmiddleton.com)



**Ask About Our Grant Program!**





# FOOD FOR THOUGHT: CHEF JENNY HOCHSCHILD

**Bars & Recreation** is the parent company for six Milwaukee entertainment brands: Amped, AXE MKE, The New Fashioned, NorthSouth Club, Nine Below, Splash Studio and Head Space Trivia.



## BARS & RECREATION

Chef Jenny boasts over 40 years of experience in the food service industry, with diverse roles that have honed her culinary expertise.

Her journey has seen her excel in positions in Madison, Racine, and Milwaukee. One of her fondest memories includes catering extravagant boat parties on Lake Michigan, showcasing her culinary prowess in unique settings.

Beyond the kitchen, she is an accomplished artist, participating in plein air festivals and local art fairs. An avid reader and member of the Milwaukee Art Museum, her interests extend to literature, art history, and poetry.

Despite her culinary talents, she humbly admits to indulging in simple pleasures like peanut butter and jelly sandwiches and hearty soups.

Driven by her love for food and artistry, Chef Jenny's journey is a testament to her dedication to culinary excellence and lifelong learning. ▴

**CHECK OUT CHEF JENNY'S  
CHICKEN MULLIGATAWNY SOUP  
RECIPE ON PAGE 10**



# Chef Jenny's Chicken Mulligatawny Soup



## INGREDIENTS

- 1 cup onion, small dice
- 1 ½ cup chopped carrots
- 1 stalk celery, chopped (1/2-3/4 cup)
- 1 large granny smith apple, skin on, cored, chopped
- 1 ½ cup cooked chicken
- ½ cup dark raisins (I like jumbo)
- 1 T minced fresh garlic
- 1-2 T flat leaf parsley, chopped loosely
- 1 tsp salt
- ¼ tsp black pepper
- ¼ tsp curry powder (I prefer the Spice House sweet yellow blend for this recipe)
- 1 tsp Marrakesh Blend also from Spice House (I use this often!)
- 2 cups chicken stock
- 8 oz coconut milk, unsweetened (canned, not the coffee house variety. I also suggest avoiding the "Lite" version)
- 1 cup cooked rice, Jasmine or Basmati

Makes about 5½ cups of soup

## DIRECTIONS

1. Rinse the rice well in cold water. Strain. (I prefer to use a rice cooker, so I don't have to watch the pot cook.)
2. If you time this right, you can start cooking the rice and have the soup finished just as the rice finishes cooking.
3. In a large pot or soup kettle, sauté the onions in about 1T of oil until soft.
4. Add the carrots, celery, and apples. Cook for just a few minutes. Add the chopped garlic, salt, black pepper, curry, and Marrakesh seasoning. If you can't find the Marrakesh mix, you can substitute more of the curry powder.
5. I recommend spices from one of the local spice houses. The flavors are far superior to any you'll find in a grocery store, they have a far greater variety of mixes, and you will need less of each spice you use. Plus, it's local!
6. Add the chicken, parsley, and raisins. Stir and let the flavors mingle for a few minutes, then add the chicken stock. Cover and bring the soup to a boil then turn down the heat down to simmer. Let it cook until the carrots are just done, about 5 minutes, then add the coconut milk.
7. Again, bring it to boil then keep it on a low simmer until the rice is finished cooking.
8. Try a little taste and adjust the seasonings as you desire. This is a sweeter soup, and some people like to add a bit of zip by a dash of cayenne or tabasco.
9. Add the cooked rice. You'll think you need more than you do but avoid the temptation to add it all! The rice will expand after you add it to the soup and the rice and coconut milk will thicken it just enough and give the soup a creamy texture.
10. Serve as soon as possible as this doesn't hold as well as other soups. If for some reason you have leftovers, add a little stock or water to thin out the soup for reheating.





WEC  
PREVIEW

# All members attending WEC, don't miss the MPI Great Lakes Reception at WEC!

Hilton Garden Inn Louisville Rooftop  
350 W. Chestnut St., Louisville, KY 40202

May 21, 2024

5:15 PM - 6:15 PM

Join MPI Great Lakes at the Hilton Garden Inn Louisville Rooftop for a dazzling networking reception during MPI WEC! Savor cocktails, appetizers, and panoramic views while reconnecting with your industry friends. Celebrate togetherness in style, and don't miss this unforgettable soirée. Our venue is a short walk from the convention center and right after Tuesday's general session. RSVP now to secure your spot and be sure to share with all your friends!

Invited chapters: MI, IN, WI, OH, IL, & PA (and others wanting to join us!)

[REGISTER HERE](#)

*This event is sponsored by Meetings Michigan and Visit Canton*

Hilton Garden Inn Louisville Rooftop







# UNPARALLELED MEETINGS WITH UNIQUE OPTIONS FOR ALL

Kalahari Resorts & Conventions is the perfect place to hold your meeting. Big or small, we'll make sure your attendees are taken care of. Our talented culinary team is ready to create a tailored dining experience to delight. With a full-service spa, a piano bar and world-class dining options, Kalahari has everything you need to ensure your event is successful.

- › 212,000 square feet of flexible event space
- › Two hours or less from major cities
- › Diverse team-building options available on-site
- › Eight food & beverage options
- › 794 guest rooms & suites

KalahariMeetings.com | Call 855-411-4605 to learn more | Follow Us:   | ©2024 Kalahari Management Co. LLC





# Uh-Ohs and Hot Topics!

By: Caley Mutrie, CAE, IOM

The March Education event offered not one but two terrific sessions from speaker **Tyra Warner, PhD, JD, CMP**, Chair of the Department of Hospitality, Tourism, and Culinary Arts, College of Coastal Carolina.



Hosted by the Monona Terrace Community and Convention Center along with Hilton Madison, with sponsorship from Destination Madison, Embassy Suites by Hilton Madison Downtown, Kalahari Resorts & Conventions, and Tri-Marq Communications, the event provided a day of outstanding education and networking in a beautiful venue.

Before our general sessions got underway, MPI-WI Past President **Naomi Tucker, CMP**, founder of Planners on Purpose, again offered and facilitated the CMP 101 program. As a CMP hopeful, I attended this orientation and came away with my questions answered about the CMP program and a much better understanding of the process overall. The program is offered periodically at monthly events, and I

highly recommend it to those thinking about pursuing the CMP credential.

Then it was time for our first session of the day, *Addressing Those “Uh-Oh” Situations in Your Contracts*. Tyra organized the discussion of contract and liability issues contextually, using several real-world scenarios to explore variations on force majeure, including



situations where weather, construction, hot-button legislative and cultural issues, and groups overlapping at a venue with conflicting ideologies. She delineated cancellation versus force majeure, which is often confusing, and suggested essential clauses to include in our contracts.



Lunch was held on the Community Terrace, where we enjoyed a fabulous Mediterranean-themed menu set against the beautiful backdrop of Lake Monona. Excellent food, views, and great company served as a welcome break between sessions.







The afternoon session topic was *The Lawyer is In – Hot Topics and Your Questions*. Tyra shared her wisdom and experience on the issues audience attendees are dealing with. We discussed and received advice on international incentives and service, data protection law, venue services, disabilities where the need exceeds venue capability, service animals, construction, food allergies, codes of conduct, food donation, indemnification, COVID and force majeure, and attrition and reselling of rooms. We named it, and Tyra covered it with us.



Our day concluded with a reception, raffle, and happy hour. We returned to the Community Terrace to network and reexperience the Terrace and our view of Lake Monona as the sun was beginning to set before making our way over to the Hilton Madison for a hosted happy hour and networking.



Thank you to Tyra, Monona Terrace, Hilton Madison, our sponsors, and the planning committee for a great event—my first and definitely not my last MPI-WI event! ▴







# ANYTHING BUT BUSINESS AS USUAL

Recognized as a hidden gem in Lake Country, the Delafield Hotel effortlessly combines cool, contemporary sophistication with the tools to get the job done.

If you're in pursuit of a venue that seamlessly integrates modern amenities with a storied history, your perfect destination is none other than Red Circle Inn.



**RED CIRCLE INN** N44W33013 WATERTOWN PLANK RD, NASHOTAH • [REDCIRCLEINN.COM](http://REDCIRCLEINN.COM)  
**DELAFIELD HOTEL** 415 GENESEE ST, DELAFIELD • [DELAFIELDHOTEL.COM](http://DELAFIELDHOTEL.COM)





# Great Scott! What an event!

By: Shannon Timmerman, CMP

Kalahari went above and beyond to create a memorable experience for our Chapter. They were a great host and really leaned into the theme. They saw it as a chance to show off some of the creative things they can do with set-up and with their culinary team!

## SPRING SPECTACULAR



The event kicked off Wednesday evening with the Spring Spectacular. The Pub Olympics in Kalahari's Volcano Lounge showed how we could incorporate games into our networking and executive retreats. After fueling up



with some tasty appetizers, the groups were assembled to begin the festivities. **Ed Buchner** and **Kortnee Carroll** coached us, as we made our way through a variety of games, including a golf simulator, duckpin bowling, pool, darts, shuffleboard, basketball, actual bowling, and axe throwing! The competition was fierce, but Team #4



pulled ran away with the Gold medal. Congratulations to **Rebecca Staats**, **Tom Graybill**, **JoEllen Graber**, and **Shelley Lauer**! These competitive stars were closely followed by Team #2 and Team #3 with the Silver and Bronze.

In the spirit of the Olympics, we were encouraged to dress in our Olympic best. Congratulations to **Kim Casey** for being the best dressed for the evening! I knew when I heard an announcement for a missing Speedo Swim cap, that someone had nailed it on the theme!

There was a closing ceremony and medal presentation at Redd's Piano Bar, where we had more delicious food and hydration offerings to replenish our energy. We sang the night away with Jeremy, who entertained us with his solo piano man/singing show. Jeremy dazzled audiences across Carnival and Royal Caribbean Cruise lines for decades, and he most certainly entertained our group into the evening hours.

*Continued on page 17*







## EDUCATION DAY

Education Day began bright and early on Thursday morning and was a full day of amazing speakers. As we entered the Ballroom through a Back to the Future journey entrance (which was totally awesome), we kicked off the morning with a delicious breakfast

Our first round of breakouts was with Michael, this time for a supplier-focused session on Leadership and how to “Calm the Fear.” There was also a planner-focused session with **Jim Spellos**, which went through tech tools to enhance productivity.



and opening keynote from the one and only **Michael Dominguez**. He filled us in on the latest trends and projections in our industry. As always, Michael Dominguez had the crowd mesmerized with his wealth of knowledge.



Our guests gathered to complete the Community Outreach project, painting watercolors for a splash of color and compassion! MPI-Wisconsin teamed up with Kalahari & Charity Water to bring clean water to ONE MILLION lives in Africa. This was followed by a fantastic lunch, which was on theme, of course! Down to the servers wearing the iconic “puffy vests” from Back to the Future.



*Continued on page 18*



Afternoon breakouts highlighted two of our very own MPI-WI Chapter members. **Naomi Tucker, CMP**, from Planners on Purpose, and



**Geoffrey Sandler** with Celebrations Entertainment, Voice of Geoffrey, shared their expertise on meeting and event planning stress, how to ease the burn, and working with nonprofits and associations.



We ended our day with Jim Spellos and the fascinating conversation on artificial intelligence. Coming from someone who has very little knowledge on AI, it was mind blowing!



A huge shout out to our 2024 Strategic Partners! Because of your support, we were able to have 60 MPI planners attend at no charge.



According to Chapter Administrator **Christopher Dyer**, *“Usually with a free registration, we see some no-shows. This year, we had 140 register, and 136 showed up!”* This was the largest program attendance that we have had since 2019, which is amazing!

Thank you also to our Registration sponsor, **PC/nametag**, for the themed badges. PC/nametag was a



great partner with the on-site badge technology they brought. We worked with them through the planning process to develop a badge template and how to thank our partners on the back side of the badges. And to our Breakfast Sponsor, **Wisconsin Dells Visitor & Convention Bureau**,

and Keynote Sponsor **Meet Chicago Northwest**, thank you! And to all that volunteered, donated silent auction items and **Sprecher Brewing Co.** for their donated root beer showing their custom label program, and the **Outlets at the Dells** for providing everyone with a coupon and Vera Bradley keychain as they left. Last, but not least, thank you to our Host, **Kalahari Resorts and Conventions**. I'll say it again, they went completely above and beyond to make our Back to the Future theme come to life. I mean, c'mon.... we had a DeLorean in the room! Doc would be proud! ▴



*Continued on page 19*









# Seamless Events from Start to Finish

Take back your day with Name Badges to Go®. We handle everything - from design and inserting your professionally printed name badges to alphabetized delivery in our OneWay® Tray. Just unpack & display, that's it!

**10% off any order  
with code PSMPIWI24**

No minimums, expires 12/31/24. Online and Phone Orders.

Skip the set up, order  
your Name Badges to Go at  
[pcnametag.com/name-badges-to-go](https://pcnametag.com/name-badges-to-go).



 **pc/nametag®**

[pcnametag.com](https://pcnametag.com) • 800.369.8622



# MPI- Wisconsin Chapter awarded the 2024 RISE Award for Marketplace Excellence!

By: Reggie Driscoll, CMP



Meeting Professionals International (MPI) launched the Recognize Industry Success and Excellence (RISE) Award Program in 2009. This annual program recognizes chapters and individual members from the MPI community based on their work's influence, transferability, and innovation within the MPI Community and/or the industry at large.

This is an opportunity to show off our best practices to other chapters to help them learn and grow themselves. Best practices are documented and presented to chapter leadership for easy implementation into chapter planning.

For this year's award we submitted our Strategic Partnership Program for consideration.

Our team was **Christopher Dyer**, **Alison Huber** (Past President), **Tom Graybill**, (Past President) and **Reggie Driscoll, CMP**. The program began in 2013 and has been growing almost every year since (curse you COVID!!). The success of the program is due to the work of every member supporting the chapter, every board member, and every President.



We looked at the way this program has helped our chapter become financially stable and how we could share this program with other chapters. No lie, it was a great opportunity to brag about how well our program is.

This is also an excellent retention and growth tool. The revenue from this program is how we can offer Education Day free to planners and offer seven other education events per year. This also helps us afford the high quality of speakers that our chapter expects. It allows the education committees to spend

more time on content and events than fundraising for each individual educational program.

We started meeting and looking into this award in July of 2023. We had to have our application in by December 10, 2023 and were notified that we were finalists on February 15th. We had our interview on February 23, 2024 and just found out on April 17th that we were the **winners!** We will be formally presented with this award at the World Education Congress (WEC) in Louisville May 20-22, 2024. ▀

Special thanks to Christopher and Heather for their consistency and perseverance each year to get the information updated and out to the partners.

Thank you to our current board of directors and everyone involved!



# WHO'S IN THE NEWS

Compiled by Cheryl Oswald, CMP

1



**Liz Unruh** was recognized at the Village of Pewaukee Police Department 2024 Police Merit Awards with the Community Letter of Commendation award.

**Congrats, Liz!**

2

Winning the Smart Women in Meetings Award means the world to me. It's a testament to the hard work and dedication that's gotten me this far and only motivates me to achieve even more. Thank you to everyone who has supported me along the way and can't wait to celebrate with my fellow achievers at the Smart Woman Summit in August. <https://i.snoball.it/p/hDTy/i>



**Cheryl Oswald, CMM, CMP, CEM**, recently received the Smart Women Innovator Award from *Smart Meetings Magazine*. Cheryl also received her Certified Meeting Professional certification!

**Congrats, Cheryl!**

3



**Carrie Berger, CMP**, recently received her Certified in Meeting Professions certification!

**Congrats, Carrie!**

4

**Naomi Tucker, CMP**, was recently featured as a panelist on global certifications at CMP Advance in Toronto.

You can also catch Naomi as a speaker at WEC. Catch her breakout on *Event Industry Burnout – We're Putting it ALL on the Table* on May 22nd!

**Way to go, Naomi!**

5

**Tracy Bockhop, CMP**, recently received the Smart Women Entrepreneur Award from *Smart Meetings Magazine*!

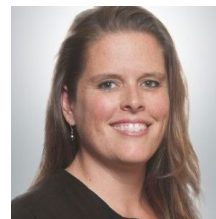
**Congrats, Tracey!**

6



**Kalahari Resorts - Cafe Mirage opened!** Great grab-and-go lunch spot and you must try their Kuku's chicken with all of the different sauces!

7



**Amy Qualmann, CMP**, was recently promoted to Director of Conferences & Events at the WI Association of School Boards.

**Congrats, Amy!**

8

**Jen Mell, CMP's** company is now YES (Your Event Solutions) LTD-Altour combined forces with Travel Leaders Corporate On Tempo to create YES, an ALTOUR Company.



**NOTE:** if you have any news to share in this column, please contact Cheryl Oswald, Director - Publications & Community Outreach, [cherylOswald@cnh.com](mailto:cherylOswald@cnh.com).



## ANNIVERSARIES

### CELEBRATE!

Congratulations to those members celebrating  
a milestone anniversary in May/June!

#### 1 YEAR

**Pamela Barritt**  
Ashworth College

**Natalie Boyce**  
Baird

**Claire DeLancey**  
Baird

**Juliet Webb**  
Baird

**Holly Williams, CMP**  
Advanced Textiles Association

**Pam Wojcik**  
Rexnord

#### 5 YEARS

**Shauna Baranczyk**  
UW-Madison

**Juanita Guzman**  
ROME

#### 10 YEARS

**Lindsey Hess, CMP**  
High Road Strategy Center

**Leigha Schatzman**  
MRA

#### 15 YEARS

**Christopher Dyer**  
MDS

## NEW MEMBERS



**Becky Koch**  
Impact Association Management

**Shandi White**  
Great Wolf Resorts







# Beyond the Boardroom

Transform ordinary meetings  
into extraordinary experiences at  
Wisconsin's first destination golf course.

Experience unparalleled convenience and luxury at SentryWorld—your premier destination resort for meetings, golf, and leisure in Central Wisconsin.

- Flying or driving, reaching us is effortless with convenient access from major highways and nearby airports
- State-of-the-art flexible venues accommodating up to 2,000
- Casual to fine dining options to enjoy, along with fully customizable banquet menus
- Indulge in luxury accommodations, featuring a diverse selection of rooms and suites, complemented by an exclusive, secure floor for heightened privacy and peace of mind
- Tell your colleagues and friends you golfed at our fully inclusive, championship golf course and host site of the 2023 U.S. Senior Open

Our experienced, full-service team will work with you to create a unique and impactful meeting for your team. Contact us today.

## SPECIAL OFFER:

Unlock exclusive savings by mentioning **MPI WI** with your RFP for meetings/events booked through March 31, 2025. **Enjoy zero percent service charge on all room rental and AV needs!**

sentryworld.com | 715-345-1600  
Stevens Point, Wisconsin





# Board Member Profile: LINDSEY HESS, CMP



## LINDSEY HESS, CMP

---

High Road Strategy Center  
Madison, WI

### **What do I like most about being a member of MPI?**

I love the networking and being able to talk to people in my industry. I have been part of MPI for 10 years and I have learned so much from other members. I know if I have a planner question, there will be another planner to help me out. I also really appreciate being able to build relationships with suppliers so when I don't understand something, I can ask questions, even dumb questions, and know they will help me to understand. We are in this together and always supporting each other. MPI is my family!

### **The person I admire and why?**

My dad. He is one of the kindest and friendliest people I know. He is the guy who is looking after those who don't have family, needs company, or a hot meal. I don't know how many times growing up we would have someone we didn't know at our Thanksgiving dinner. He always said everyone needs somewhere to go on the holidays. He has never been one to ask for anything in return, which drives everyone crazy, but he doesn't do it for the money or attention, he does it because he truly cares. He has the biggest heart and is always being goofy and making people laugh. He is now retired, still volunteering, playing music, helping those in need and continues to smile and laugh, because why not!

### **Words to live by:**

*The most important thing is to enjoy your life – to be happy – it's all that matters.*  
Audrey Hepburn





# Planner Profile: TYLER PRIEFER



## TYLER PRIEFER

Generac Power Systems  
Waukesha, WI

**Tell us about your company and/or position:** I work for Generac Power Systems located in Waukesha, WI! We manufacture generators that help restore power in industrial, residential, and commercial buildings. My position consists of internal and external events, we complete about 70 events a year that range between 20 people - 3,600 people! It is safe to say we stay pretty busy.

**How long have you been in the meetings industry?** Almost a year and a half. I was in healthcare for six years prior to starting at Generac.

**What drew you to become a planner?** Prior to Generac, I worked as an activities assistant in a Dementia Unit and it was an absolute blast. As I was planning, organizing, and implementing events for the residents, I began to realize how much I enjoyed doing it! I loved being able to plan all these fun events for the residents and getting the opportunity to enjoy the events with them. Life is way too short to not have fun with others. (My dementia residents will always hold a special place in my heart.)

**What do you like most about being a member of MPI?** THE CONNECTIONS! Every MPI event I always meet someone new and create a connection with them in one way or another (linked, mutual friend, mutual interest, etc.). Even in public, I will meet individuals who are or previously were a part of MPI and we get to chatting... this is a sign I talk too much. MPI is such an awesome opportunity Generac has given me and I am beyond grateful for the people within MPI.

**What was your favorite team or project you have worked on for MPI, or what area of the Chapter do you hope to become involved with?** I have enjoyed being a part of the *Agenda Magazine* team. The team is great to work with and editing the magazine is always a fun thing to do.

**What are your hobbies and interests?** I have been dancing for 25 years and teaching for 12 years! Dancing is a passion and I enjoy working out.

**Favorite artist:** This is a tie between Dave Matthews and Mumford & Sons!







## TERRI BAIN

---

Lake Lawn Resort

Delavan, WI in the Lake Geneva area

**How long have you been in the industry:** Over 30 years in the hospitality industry and still loving it. I started in hospitality as an administrative assistant to the sales team and fell in love with the hospitality industry.

**1-3 things unique to your company:** Lake Lawn Resort is a historic property with its beginning in 1878 and is located on two miles of shoreline along Delavan Lake. It's a regular occurrence to hear stories from guests about visiting when they were children and now bringing their grandchildren.

One of two places in the U.S. with a string of Prairie style homes designed by Frank Lloyd Wright. Only a short walk out to the lakefront, guests can board the Lake Lawn Queen which accommodates up to 70 passengers and can be chartered privately or guests are able to join a public boat cruise to spend time on the lake. We have "many options" available to visitors with a wide variety of room types ranging from king rooms for couples and loft rooms for families along with lake homes. Unique event space and amenities also offer visitors "many options" both inside and outside depending upon the time of year.

**What drew you to join the hospitality industry:** I found working at a resort fun and it felt like a natural fit for me. The hospitality industry gave this small town girl many new experiences including my first airplane ride and gave me a chance to grow a career. Along with wonderful mentors, MPI education and networking was an important part of my journey.

**Tell us about the person you admire most and why:** My angel mother who raised seven children followed closely by my two sisters. Both loving and kind mixed with strength and dedication to family and whatever goals they want to achieve.

**Any words to live by or favorite quotes you would like to share with someone wanting to join hospitality?** I always remember back to when, as an impressionable first time manager, a General Manager gave me advice that has kept my feet on the ground. Hospitality can be simple, it is like welcoming someone to your home. Think about all the preparations you make for people who visit you - cleanliness, good food, welcoming smile... and it goes on. They were simple words but they left a lasting impression.





# Volunteer Spotlights:

## GRETA MCCUE, CHERYL OSWALD TYLER PRIEFER, MARIA PEOT

If you're interested  
in volunteering,  
reach out to us at  
[admin@mpiwi.org](mailto:admin@mpiwi.org)



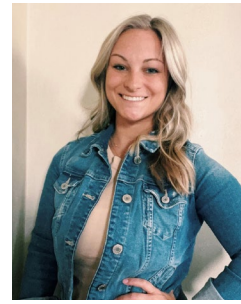
### **Celebrating Outstanding Volunteers: Greta McCue and Cheryl Oswald**

In every organization, there are unsung heroes whose dedication and hard work behind the scenes often go unnoticed. Today, we shine a spotlight on two remarkable individuals whose contributions have truly made a difference: Greta McCue and Cheryl Oswald.

Greta McCue is the creative force behind our social media presence and website edits. If you've ever marveled at a catchy social media post or appreciated the seamless navigation on our website, you have Greta to thank. Her keen eye for detail and knack for crafting engaging content have taken our online platforms to new heights. But it's not just about aesthetics; Greta's commitment ensures that our organization stays connected with our audience, amplifying our reach and impact. Without her tireless efforts, our digital footprint would not be as vibrant or effective. Greta, I am immensely grateful for your invaluable contributions to our team.

Equally deserving of recognition is Cheryl Oswald, the mastermind behind our captivating *AGENDA Magazine*. From inception to publication, Cheryl invests countless hours into curating content, coordinating with contributors, and refining every detail to perfection. Her dedication to excellence is evident in each issue, as she meticulously crafts a publication that informs, entertains, and inspires. Cheryl's unwavering commitment to producing top-notch work sets the standard for our organization and elevates our collective efforts. Cheryl, your passion, and professionalism are truly commendable, and I am privileged to have you as an integral part of our team.

***Thank you both for all you do!***



### **The Unsung Heroes Behind Our Bi-Monthly Magazines: Tyler Priefer and Maria Peot**

Have you ever marveled at the seamless production of our bi-monthly magazines and wondered about the secret behind their success? Look no further than the exceptional dedication of two remarkable volunteers who work tirelessly behind the scenes: Tyler Priefer and Maria Peot.

Editing is a meticulous task that requires precision, attention to detail, and a commitment to excellence. Tyler and Maria embody these qualities wholeheartedly, serving as the backbone of our publication team. Every other month, they devote countless hours to review, refine, and perfect each page, ensuring that every "i" is dotted and every "t" is crossed. Their unwavering dedication and unwavering commitment to quality are the driving forces behind our ability to consistently deliver six magazines a year.

**Tyler & Maria, thank you for your  
unwavering commitment to the  
*AGENDA Magazine!***





# Enhance your meeting planning career with the

## MPI ACADEMY

With hundreds of hours of free education for MPI members, the MPI Academy is your one-stop shop for meeting planning and event industry skills training, CE credits and certificate courses. Featuring online and in-person classes and webinars, it's the perfect resource for the job you have - or the job you want.

**CERTIFICATE COURSES:** <https://www.mpi.org/education>

## SAVE THE DATE

## 2024 CHAPTER EVENTS

**MAY 20 – 22, 2024**

WEC

Louisville, KY

**AUGUST 15, 2024**

AUGUST EDUCATION

Bars & Rec

The Best Place at Historic Pabst Brewery &

Brewhouse Inn & Suites, Milwaukee

**SEPTEMBER 26, 2024**

MPI AWARDS GALA

Heidel House, Green Lake

**OCTOBER 14, 2024**

OCTOBER EDUCATION

The Abbey Resort, Fontana

Back to table of contents

