

Join MPI

The MPIRMC Membership team would like to invite you to become a member of Meeting Professionals International (MPI). As the meeting and event industry's largest and most vibrant global community, MPI helps our members thrive by providing human connections to knowledge and ideas, relationships, and marketplaces for meeting professionals in the Rocky Mountain Area.

The vision is activated by using four strategies:

- **EVOLVE** to a global community,
- **RE-IMAGINE** business relationship with its chapters,
- **ELEVATE** the member conversation and experience, and
- **BUILD** a great organization.

Meeting Professionals International (MPI) is the largest meeting and event industry association worldwide. Founded in 1972, MPI provides innovative and relevant education, networking opportunities and business exchanges, and acts as a prominent voice for the promotion and growth of the industry. MPI is a community of 12,000+ members and local chapters across the globe.

What's In It For You?

- MPI is leading the charge to make meetings and events, and those who produce them, a key strategic component of every organization's business. We are committed to your success.
- MPI provides world-class education customized to your level and position, opportunities to build professional relationships, and a personalized lifetime professional development plan for you.
- For employers, MPI provides you with the education, contacts, and tools you need to execute more effective meetings that further the organization's overall strategic goals and demonstrate ROI.
- For suppliers, MPI Rocky Mountain Chapter alone means business via exposure for your company to our planners with annual buying power of \$172,275,000.
- Benefits for all members include chapter membership, volunteer leadership opportunities, discounts on MPI products and conferences, subscription for The Meeting Professional publication and online editions, early access to news and trends, and research such as salary surveys, industry forecasts, multicultural projections and more.

We welcome you to the opportunity to experience MPIRMC firsthand. We realize the commitment and costs to join an association is an investment for you and your organization. We are here to support you in getting your best ROI by offering several programs to help you and New Member Orientation, just to get you going!

If you have questions, or need more information, please contact our MPIRMC office at 720-733-8000 or MPI Headquarters at 972-702-3021.

Yours truly,



Jeanette Stensgaard, MBA, CMP, HMCC – MPIRMC VP of Membership - vpmembership@mpirmc.org

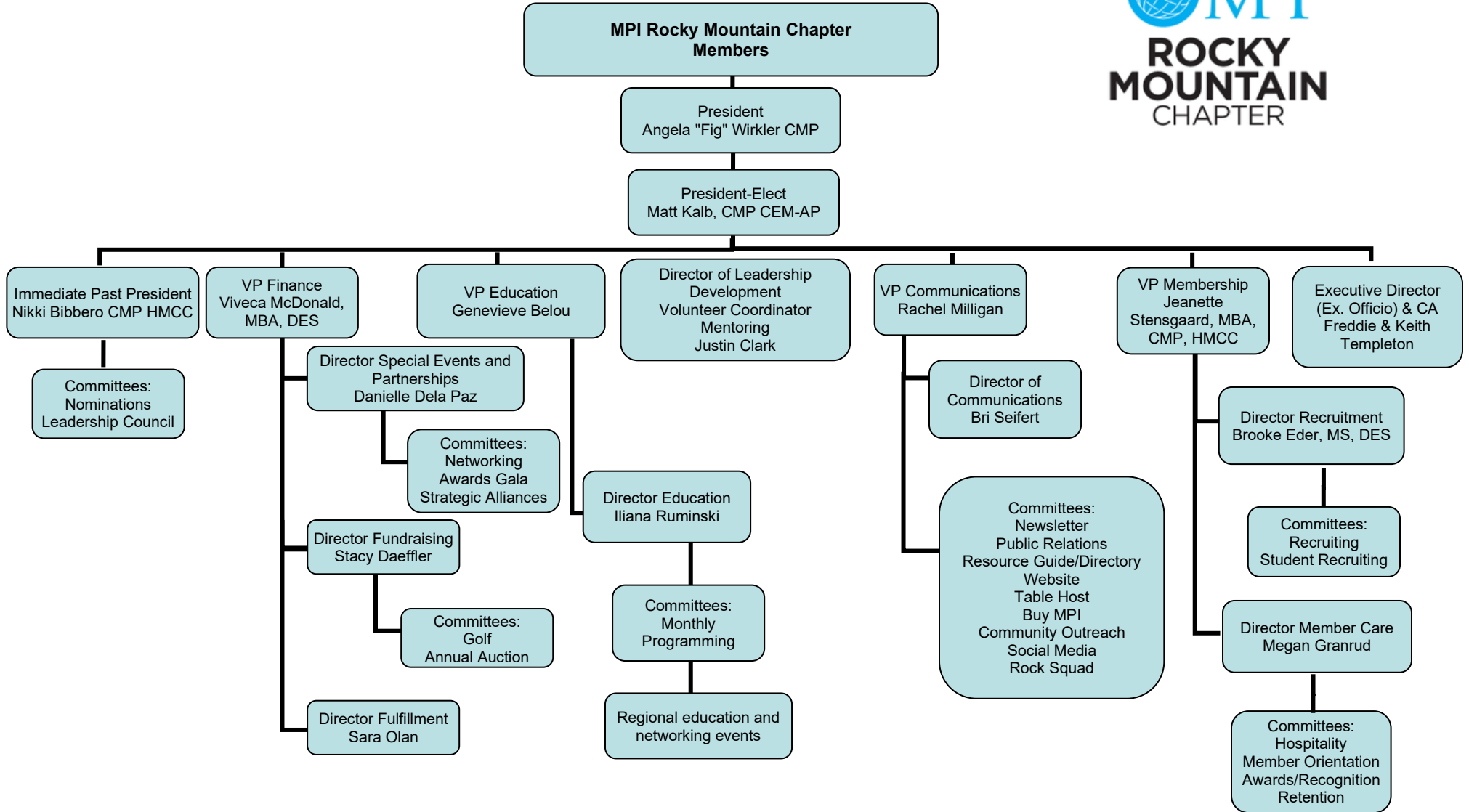


2023 – 2024 MPI Rocky Mountain Chapter Board of Directors

Board Position	Name	MPI Email
President	Angela "Fig" Wirkler	president@mpirmc.org
President Elect	Matthew Kalb CMP CEM-AP	presidentelect@mpirmc.org
Immediate Past President.....	Nikki Bibbero CMP HMCC	ipp@mpirmc.org
VP of Communications.....	Rachel Milligan	vpcommunication@mpirmc.org
VP of Education.....	Genevieve Belou	vpeducation@mpirmc.org
VP of Finance	Viveca McDonald MBA, DES	vpfinance@mpirmc.org
VP of Membership	Jeanette Stensgaard CMP MBA	vpmembership@mpirmc.org
Director of Leadership Development	Justin Clark	dirleadershipdevelopment@mpirmc.org
Director of Communication	Bri Seifert	direducation@mpirmc.org
Director of Education.....	Iliana Ruminski	direducation@mpirmc.org
Director of Fullfillment.....	Sara Olan	dirfulfillment@mpirmc.org
Director of Special Events and Partnerships..	Danielle Dela Paz	dirseandsa@mpirmc.org
Director of Sponsorship & Fundraising.....	Stacy Daeffler	dirfundraising@mpirmc.org
Director of Member Care.....	Megan Granrud	dirmembercare@mpirmc.org
Director of Recruitment.....	Brooke Eder	dirrecruitment@mpirmc.org
Executive Director.....	Freddie Templeton	executivedirector@mpirmc.org
Chapter Administrator	Keith Templeton	admin@mpirmc.org

MPI Rocky Mountain Chapter Board of Directors

2023-2024 Board Structure Effective July 1, 2023





MEMBERSHIP APPLICATION

CAMPAIGN CODE:

MEMBER INFORMATION

Mr. Ms. Mrs. Dr.

First Name _____ Middle _____ Last _____

Designation: CMP CMM HMCC Other _____ Job Title _____

Company Name _____

Who referred you? _____

Chapter Affiliation _____

(Applicable for Preferred and Premier Memberships only)

Graduation Year (if applicable) _____

How did you hear about us? _____

Member Type		Membership Level
<input type="checkbox"/> Planner	<input type="checkbox"/> Supplier	<input type="checkbox"/> Premier
<input type="checkbox"/> Faculty	<input type="checkbox"/> Student	<input type="checkbox"/> Preferred
		<input type="checkbox"/> Essential

CONTACT INFORMATION

Please enter your preferred mailing address: Home Work

Street Address _____ Apt/Suite/Office _____

City/Town _____ State/Province _____ Zip/Postal _____ Country _____

Email _____

Phone: Home Mobile _____ Work _____

PAYMENT INFORMATION

Check Enclosed MasterCard Visa American Express Discover Send Invoice

Name on Card _____

Card Number _____ Exp. Date _____ CVW Number _____

State/Province _____ Zip/Postal _____

Total Amount _____ Signature _____ Date _____

Bank - Wire Transfer

Check this box if you would like to be automatically renewed using this credit card when membership expires.

Meeting Professionals International (Tax ID: 23-7256168)

Account Number: 2036630 • Bank Routing for ACH/Wire Transfers: 111025877 • International SWIFT: TESYUS41

Name of Bank: Texas Security Bank, 1212 Turtle Creek Blvd., Dallas, TX 75207

ACKNOWLEDGMENT

All information provided in this application is complete and correct to the best of my knowledge and belief and if additional information is needed, I will supply it. I shall conduct my activities in accordance with the Bylaws, Policies and Procedures, and Principals of Professionalism of MPI as they are now or amended in the future. I waive and release all claims, demands and actions that I now or may in the future have against MPI, its officers, directors, members, agents, employees and chapters for any act or omission, in granting or denying membership in MPI or in censoring, suspending, expelling, or terminating my membership in MPI. I agree to allow my contact information to be included in all MPI marketing preference lists. If I am using a credit card, I authorize MPI to process such request in accordance with the appropriate credit card rules and regulations governing it.

Signature required _____

Print name _____

Date _____

SEND MEMBERSHIP APPLICATION WITH PAYMENT TO:

Meeting Professionals International
PO Box 226308 • Dallas, TX 75222-6308
Tel 972.702.3030
Web www.mpi.org Email feedback@mpi.org



Membership Benefits	« Essential »	« Preferred »	« Premier »
24/7 On Demand Professional Development	●	●	●
MPI Weekly Newsletters	●	●	●
MPI Industry Research	●	●	●
Member Rate for MPI Global Events	●	●	●
<i>The Meeting Professional</i> ® Digital Magazine	●	●	●
Full Access to the MPI Community Forums	●	●	●
Member Directory Listing and Access	●	●	●
Access to Global Marketplace	●	●	●
Advance Job Board Notice (Planner only)		●	●
Global Supplier Marketplace Listing (Supplier only)		●	●
Chapter Affiliation and Discounts at Chapter Events		●	●
Advanced copy of <i>Meetings Outlook</i>			●
10% off registration to MPI Experiential Events, if qualified.			●
10% discount on Academy programs (CMM and CMP excluded)			●
10% discount on WEC and other MPI Global Events			●
MPI Signature Event Virtual Pass			● **
Advanced reservation to annual Career Center at WEC			● **
Advanced reservation for complimentary professional headshots during WEC			● **

**When Available

Membership Pricing	« Essential »	« Preferred »	« Premier »
Planner	US \$395	US \$470	US \$565
	EUR €370	EUR €435	EUR €525
Supplier	US \$525	US \$600	US \$695
	EUR €475	EUR €555	EUR €635
Student		US \$40 EUR €40	
Faculty		US \$199 EUR €199	

Pricing includes a one-time \$50/€50 application fee for new members.

For full benefits, visit mpi.org/join



Are you looking to increase your return on your MPI Membership?

Have you considered joining the Rocky Mountain Chapter of MPI as an Affiliate Member?

If you are a current member of MPI and are looking for an opportunity to engage with over 420 members of the Rocky Mountain Chapter, the most effective and least expensive way is through our Affiliate Membership.

Affiliate Membership is only \$75 annually (effective on the date of acceptance) and includes:

- Invitations to all our educational and social events
- Our Semi-Annual Printed Membership Directory
- An online listing and access to the "Members Only" section of www.mpirmc.org.
- Our weekly e-newsletter – *The Member Minute* – And all Chapter updates
- Advertising and sponsorship opportunities

MPI Rocky Mountain Chapter's commitment to excellence is exemplified by providing the opportunity to experience firsthand innovations in meeting design, delivery, education and professional development. We look forward to having you on board!



**ROCKY
MOUNTAIN
CHAPTER**

Affiliate Membership Application

Affiliate Membership in the Rocky Mountain Chapter is designed for those MPI members, not affiliated with the Rocky Mountain Chapter, who would like to receive all chapter mailings, including the Directory, and participate in special events sponsored by the chapter as a chapter member. The annual fee is US \$75.00. Affiliate Membership is effective on the date of acceptance.

Name: _____ Designation(s): _____

Title: _____

Organization: _____

Chapter of Membership: _____

Member Type: _____

MPI member Number: _____ Renewal Date: _____

Note: Your MPIRMC Affiliate Membership will be processed upon verification of your current MPI membership status.

Address: _____

City: _____ State: _____ Zip: _____

Telephone: _____ Fax: _____

Email: _____ Website: _____

Signature: _____ Date: _____

Please send completed application along with payment to:

MPI Rocky Mountain Chapter

C/O Freddie Templeton - Rocky Mountain Event Consultants

7300 W. Stetson Place, Unit 41 Littleton, CO 80123

Direct: 720-733-8000

Email: info@mpirmc.org

www.mpirmc.org

We accept checks, Visa, MasterCard, or American Express.

WANT TO STRENGTHEN A FRIENDSHIP AND AN INDUSTRY? **Refer a friend to MPI.** (see reverse for details)



Meeting Professionals International (MPI) is the largest and most vibrant global meeting and event industry association. The organization provides innovative and relevant education, networking opportunities and business exchanges, and acts as a prominent voice for the promotion and growth of the industry. MPI membership is comprised of approximately 18,000 members belonging to 66 chapters and clubs worldwide.

MPI members enjoy benefits, including:

- Networking events
- Professional development webinars or in-person classes
- Industry research
- Online community directory
- Industry job boards
- Award-winning trade publications

Learn more at www.mpi.org



Meeting Professionals International (MPI) is the largest and most vibrant global meeting and event industry association. The organization provides innovative and relevant education, networking opportunities and business exchanges, and acts as a prominent voice for the promotion and growth of the industry. MPI membership is comprised of approximately 18,000 members belonging to 66 chapters and clubs worldwide.

MPI members enjoy benefits, including:

- Networking events
- Professional development webinars or in-person classes
- Industry research
- Online community directory
- Industry job boards
- Award-winning trade publications

Learn more at www.mpi.org



M E E T I N G P R O F E S S I O N A L S I N T E R N A T I O N A L

RELEASE FOR TRANSFER

- The MPI Membership is an *Individual Membership* which belongs to the Member and not the employing organization -- regardless of who pays for the membership.
- It is the right of the individual member to take their membership with them when they move from one position to another or change employers.
- The MPI Membership Transfer is possible ONLY if the current member agrees to the membership transfer, signs the release form in the section provided below.
- There is an administrative processing *Membership Transfer Fee of \$50 USD/CAD* due at the time of transfer.
- If the current membership is due for renewal, then the payment of \$349 USD/CAD for planners/\$469 for suppliers is due. Therefore, the \$50 Transfer for Membership Fee is not necessary.
- Transfers are only applicable to full dues paying members and are not applicable to lifetime members, faculty or students.
- The new MPI Member must submit a completed Membership Application Form with this MPI Membership Release of Transfer Form.
- Membership can only be transferred one time during a 12 month period.

Current Member's Name _____ MPI ID # _____

Current Member's Telephone: _____

is allowing the remaining months of membership to be transferred to:

New MPI Member's Name _____

Company Name _____

CURRENT MEMBER'S SIGNATURE IS REQUIRED, signifying that the current member agrees to relinquish his/her membership to the person listed above. (This must be the member's actual signature.) MPI Global has the right to contact the current member for a verbal confirmation if needed.

Signature of Current Member (Required) X _____

Printed Name _____

Date ____/____/____

Credit Card: _____

Expiration Date: _____ CVV: _____

Amount: _____

Note: If the current member named above decides to become a member of MPI in the future, he/she must rejoin as a New Member with his/her new place of employment and requires completion of a new "MPI Membership Application" and an accompanying payment of \$349 USD/CAD for planners or \$469 for suppliers.

RETURN THIS FORM WITH PAYMENT TO
Meeting Professionals International
2711 LBJ Freeway Suite 600
Dallas, TX 75234
USA

You may email feedback@mpiweb.org or Call 972.702.3053 or Fax 972.702.3065 to expedite this transfer.

2023-2024 Chapter Leadership Development Opportunities

Are you looking for ways to improve or increase your leadership skills either for your current position or the one you aspire to? Do you have a desire to make a positive difference in your industry and community?

The Meeting Professionals International Rocky Mountain Chapter (MPIRMC) has several ways for you to learn new skills, meet new people and expand both your personal and professional networks.

Please check the areas you are interested in learning more about below and our Leadership Development Team will contact you. Either return this form to the MPIRMC Membership Concierge Table or email the Director of Leadership Development, dirleadershipdevelopment@mpirmc.org or mpi@rmecllc.com, for more information on the MPI Rocky Mountain Chapter for Leadership Opportunities and the MPIRMC Board information go to www.mpirmc.org.

COMMITTEES

Finance

Obtaining Sponsorships and/or Logistics Planning for:

- 50th Anniversary Celebration Annual Awards Gala/Auction Networking/Special Events
- Casino Night Golf Tournament Sponsorship Procurement

Communications

- Website Member Minute Marketing/Social Media Proof Reading Copywriting

Education

- Speaker Coordinator Monthly Programs Grants Chair Survey Chair
- Coordinate Food & Beverage at Educational Sessions Table Host at Educational Sessions

Membership

- Reach out to **new** members to welcome them to our chapter. Reach out to existing members to get feedback on how their membership is serving their needs and confirm membership renewal
- Recruit new members Retain existing members Student Engagement
- Host the Concierge/Registration table at MPI After 5 Events and/or Educational Sessions for the purpose of providing introductions, answering questions and recruiting nonmember guests

Leadership

- Interview members interested in volunteering to confirm the details pertinent to meeting their volunteer goals
- Follow up with existing volunteers for feedback on their experience Leader Tracking

INTERESTS

- | | | | |
|--|--|--|---|
| Serving on a committee
<input type="checkbox"/> | Chairing a committee
<input type="checkbox"/> | Helping with a special project or task force
<input type="checkbox"/> | Serving on the Board of Directors
<input type="checkbox"/> |
|--|--|--|---|

Primary purpose for volunteering:

How many hours a month are you able to commit?

What are your talents, skills or hobbies?

Do you have special passion or skill you want to engage or learn?

What do you dislike doing or not interested in participating in?

Name: _____ Designations: _____

Title: _____ Company: _____

Phone: _____ Email: _____ MPI Membership Number: _____



Top 5 Reasons for Meeting Planners to Join MPI



A membership with **Meeting Professionals International** provides countless benefits that will allow you to grow both personally and professionally. Our members tell us that these are the top five reasons for joining:



Expand your professional capabilities through the MPI Academy's powerhouse of educational and career resources. Gain clock hours with on-demand webinars, study for the CMP or future-proof your career through one of our many credential certificate programs.



Local engagement and community involvement through your chapter. Interact with your peers virtually and face-to-face at local chapter meetings and at MPI's global events. With more than 70 chapters and clubs throughout the world, MPI offers the largest localized industry network.



Global connections will grow your network. MPI has a global community of 60,000 meeting and event professionals including 15,000 engaged members and its Plan Your Meetings audience. It has nearly 70 chapters and clubs in more than 70 countries worldwide.



Contribute to the advancement of your community and our industry by volunteering on one of MPI's boards or as a chapter leader. Or join one of our nine MPI Communities to help enhance membership, community benefits and business resources for self-organized interest groups.



Stay attuned to the latest relevant industry news and stories. Get access to our award-winning magazine, *The Meeting Professional* and our weekly curated industry newsletters, *MPI NewsBrief* and *MPI Pulse*. For the latest trends and research, *Meetings Outlook* is a future-focused quarterly report that helps you stay ahead of our industry's sharp curve.

Want more great reasons? We've got too many for just this one page. If you have questions or want to speak directly with our team, you can contact us at +1.972.702.3053 or membership@mpi.org. Give us a call or join today by visiting mpi.org/join.



When we **meet**,
we change the world.*



Top 5 Reasons for Meeting Suppliers to Join MPI



A membership with **Meeting Professionals International** provides countless benefits that will allow you to grow both personally and professionally. Our members tell us that these are among the top reasons for joining:



Global connections will grow your network and your business. MPI is the industry's largest association boasting 15,000 members globally in 75 countries, more than half of which are planners. Those planners collectively account for over \$13 billion in expenditures per year, and 85% of members buy from suppliers that advertise with MPI.



Local engagement and community involvement through your chapter. Interact with your peers virtually and face-to-face at local chapter meetings and at MPI's global events. With more than 70 chapters and clubs throughout the world, MPI offers the largest localized industry network.



Contribute to the advancement of your community and our industry by volunteering on one of MPI's boards or as a chapter leader. Or join one of our nine MPI Communities to help enhance membership, community benefits and business resources for self-organized interest groups.



Expand your professional capabilities through the MPI Academy's powerhouse of educational and career resources. Gain clock hours with on-demand webinars, study for the CMP or future-proof your career through one of our many credential certificate programs.



Stay attuned to the latest relevant industry news and stories. Get access to our award-winning magazine, *The Meeting Professional* and our weekly curated industry newsletters, *MPI NewsBrief* and *MPI Pulse*. For the latest trends and research, *Meetings Outlook* is a future-focused quarterly report that helps you stay ahead of our industry's sharp curve.

Want more great reasons? We've got too many for just this one page. If you have questions or want to speak directly with our team, you can contact us at +1.972.702.3053 or membership@mpi.org. Give us a call or join today by visiting mpi.org/join.



When we **meet**,
we change the world.®



Top 5 Reasons for Meetings Faculty to Join MPI



A membership with **Meeting Professionals International** provides countless benefits that will pave the way for you, your students and your school to advance. Our members tell us that these are among the top reasons for joining:



Connect with fellow educators from around the world. MPI is the industry's largest association boasting 15,000 members globally in 75 countries. Connect with educational colleagues at MPI's global events and through our online directory, forums and discussion groups. Post job opportunities on MPI's job board.



Localized experiences, resources and opportunities for your professional growth. Interact with peers and virtually and face-to-face at local chapter meetings. With more than 70 chapters and clubs globally, MPI offers the largest localized industry network to find speaking opportunities and connect to the industry.



Contribute to the advancement of your community by sharing your expertise on one of MPI's boards. You can also join one of the nine MPI Communities to help enhance membership, community benefits and business resources for self-organized interest groups.



Expand your professional capabilities and get continuing education through the MPI Academy. Join a class or lead one! As a member you'll get access to calls for speakers for MPI education and get access to the MPI Academy's variety of educational offerings, from certificate courses to webinars, special virtual programming and more. Access our popular MPI community forums to dive into topics you care about with peers.



Research, industry news and stories from our award-winning magazine, direct to your inbox. Get access to our award-winning magazine, *The Meeting Professional* and our weekly curated industry newsletters, *MPI NewsBrief* and *MPI Pulse*. For the latest trends and research, *Meetings Outlook* is a future-focused quarterly report that helps you stay ahead of our industry's sharp curve.

Want more great reasons? We've got too many for just this one page. If you have questions or want to speak directly with our team, you can contact us at +1.972.702.3053 or membership@mpi.org. Give us a call or join today by visiting mpi.org/join.



When we **meet**,
we change the world.®



Top 5 Reasons for Meeting Students to Join MPI



A student membership with **Meeting Professionals International** provides countless benefits that will allow you to grow personally and professionally while in school. Our members tell us that these are among the top reasons for joining:



Find a mentor, get to know local businesses or meet a future employer. Chapter events are great ways to connect with local industry pros. With 70 chapters worldwide, meeting local colleagues is easy and provides you many opportunities to build your career, from internships to employment.



Global connections will grow your network. MPI is the industry's largest association boasting 15,000 members globally in 75 countries. Friendships, new ideas and innovative growth awaits you.



Chart your career through the MPI Career Center and Job Board. MPI's popular job board allows you to see new positions two weeks before non-members, giving you a competitive advantage. Upload your resume for employers to find you before a position is posted publicly. Once uploaded, you will receive a free professional resume critique from TopResume.



Contribute to the advancement of your community and gain industry experience as a volunteer. The colleagues you meet often open their doors to future career opportunities. From chapter positions to task forces and committees, volunteering will provide real world experience and help you form and cultivate long-lasting industry relationships.



Relevant industry news and stories will keep you in the know. Get access to our award-winning magazine, *The Meeting Professional* and our weekly curated industry newsletters, *MPI NewsBrief* and *MPI Pulse*. For the latest trends and research, *Meetings Outlook* is a future-focused quarterly report that helps you stay ahead of our industry's sharp curve.

Want more great reasons? We've got too many for just this one page. If you have questions or want to speak directly with our team, you can contact us at +1.972.702.3053 or membership@mpi.org. Give us a call or join today by visiting mpi.org/join.



When we **meet**,
we change the world.®