



# NEW JERSEY CHAPTER

## 2026 SPONSORSHIP & MARKETING GUIDE



### ABOUT THE MPI NEW JERSEY CHAPTER

Established in 1985, The MPI New Jersey Chapter is the largest statewide trade association for the meeting industry and is committed to helping its members advance their careers through superior education, networking and professional development opportunities.

When you partner with the MPI New Jersey Chapter, you become part of an organization dedicated to your growth and success. You'll connect with the innovative learning, passionate people and big ideas that will empower you to become an agent of change and reinvent the world.

### ADVERTISE WITH US

Whatever your advertising needs, we are delighted to work with you.

#### WEBSITE AD:

- 12 Months - \$1,750
- 6 Months - \$1,050
- 3 Months - \$600
- 1 Month - \$250

#### NEWSLETTER AD:

- 12 Months - \$1,200
- 6 Months - \$750
- 3 Months - \$450
- 1 Month - \$175

#### ADVERTORIAL - \$750

An advertorial is a paid advertisement designed to resemble an article and contains useful information, but its goal is to promote a business. Advertorials generate effective reader engagement on the MPI New Jersey Chapter "Onsite Online" blog.

#### SOCIAL MEDIA TAKEOVER - \$750

Four social media posts in one day on the MPI New Jersey Chapter's Facebook and Instagram stories



#### AD BUNDLE - \$750

- Two social media posts
- Two months of website ads
- Two ads in the monthly chapter newsletter

### STATISTICS



850+  
Followers



1100+  
Followers



1000+  
Followers



MPI

NEW JERSEY  
CHAPTER

2026 SPONSORSHIP & MARKETING GUIDE

## STRATEGIC CHAPTER PARTNERSHIP: \$20,000

Available for a rolling 12-month timeframe

A full-year Strategic Chapter Partnership includes sponsorship of all chapter educational programs, meet-ups, and virtual events. It also includes a Title Sponsorship at our Annual MEETS Conference. A selection of advertising is included to enhance your marketing efforts.

### Preferred Education Sponsorship at 3 Education Programs

- Recognition on the sponsorship page with logo/hyperlink to your website
- Two (2) event registrations for each chapter program
- Exhibit booth with pre and post-event connections at each program (in-person events only)
- Podium/screen time available at each educational program (3 minutes)
- Logo on the registration website and registration pages
- Logo in chapter email marketing promotions, including the monthly events email and the chapter newsletter
- Company recognition at sponsored programs
- Ability to provide promotional giveaway/collateral material to attendees (in-person events only)
- Post-event attendee list following each program
- Quarterly social media thank you post

### Title Sponsorship of the MPI New Jersey Chapter MEETS Conference

- Two (2) event registrations to the program
- Stage time during one of the general sessions (5 minutes)
- Exhibit booth with pre and post-event connections
- Logo on welcome and general session slides with closing session recognition
- Logo on the registration website and registration pages
- Logo in select promotional materials
- Pre-event attendee list for one-time use
- Post-event attendee list

### MEET UPS

- Exhibit booth with pre and post-event connections at each program
- Logo on registration website and registration pages
- Ability to provide promotional giveaway/collateral material to attendees, post-event attendee list following each program

### Advertising

- Twelve (12) advertisements included in the monthly chapter newsletter
- Twelve (12) months of advertisements on the chapter website
- Four (4) articles or advertorials in the "Onsite Online" chapter blog to be scheduled quarterly
- Four (4) stand-alone emails to the database to be scheduled quarterly
- Four (4) social media posts to be scheduled quarterly

\*The Annual CMP/CMM Recognition Event and Annual Golf Event are not included in the Strategic Chapter Partnership.



MPI

NEW JERSEY  
CHAPTER

2026 SPONSORSHIP & MARKETING GUIDE

## PREMIER EDUCATION PARTNERSHIP: \$10,000

Available for a rolling 12-month timeframe

A full-year Premier Education Partnership includes a Select Education Sponsorship of all three (3) regular chapter educational programs. It also includes a Main Stage Speaker Sponsorship at the Annual MEETS Conference. A selection of advertising is included to enhance your marketing efforts.

### Select Education Sponsorship at 3 Education Programs

- Recognition on the sponsorship page with logo/hyperlink to your website
- One (1) event registration to each sponsored program
- Exhibit booth with pre and post-event connections at each sponsored program (in-person events only)
- 60-second promotional video played during each program
- Logo on the registration website and registration pages for each program
- Company recognition at each sponsored program
- Ability to provide promotional giveaway/collateral material to attendees (in-person events only)
- Post-event attendee list following each sponsored program

### Main Stage Speaker Sponsorship of the MPI New Jersey Chapter MEETS Conference

- One (1) event registration
- Exhibit booth with pre and post-event connections
- 60-second promotional video played or stage time (1 minute)
- Introduction of one of the main stage speakers
- Participation in speed-networking session with planner attendees
- Logo on welcome and general session slides with closing session recognition
- Logo on the registration website and registration pages
- Pre-event attendee list for one-time use
- Post-event attendee list

### Advertising

- Six (6) advertisements included in the monthly chapter newsletter
- Six (6) months of advertisements on the chapter website
- Two (2) articles or advertorials in the "Onsite Online" chapter blog to be scheduled quarterly
- Two (2) stand-alone emails to the database to be scheduled quarterly
- Two (2) social media posts to be scheduled quarterly



MPI

NEW JERSEY  
CHAPTER

2026 SPONSORSHIP & MARKETING GUIDE

## SHARE YOUR CITY MEET-UP SPONSORSHIP: \$5,000

(JUST \$500 PER HOTEL PARTNER)

Available only 4 times annually with the MPI New Jersey Chapter

The Share Your City Sponsorship is a unique opportunity for destinations to visit the MPI New Jersey Chapter and sponsor a chapter networking event. The destination will have the opportunity to showcase up to 10 hotel partners, provide giveaways or raffle prizes to attendees, and give a presentation. With your support and guidance, the MPI New Jersey Chapter will coordinate the location, handle the registration, and market the event to our members and industry community.

### Event Sponsorship

- DMO/CVB recognition at sponsored program and on all marketing material promoting the event
- Ability to showcase up to 10 partners at the sponsored program with exhibit booth
- Stage time available at the program (10 minutes maximum)
- Logo on registration website and registration pages
- Ability to provide promotional giveaway/collateral material to attendees
- Post-event attendee list following the sponsored program
- Recognition on the chapter's sponsorship page with logo/hyperlink to website for the current term
- Logo in chapter email marketing promotions, including monthly events email and newsletter for the current term

### Advertising

- Three (3) advertisements included in the monthly chapter newsletter
- Three (3) social media posts

Contact Heather Kresge, [admin@mpinewjersey.org](mailto:admin@mpinewjersey.org) to secure your sponsorship!



MPI

NEW JERSEY  
CHAPTER

2026 SPONSORSHIP & MARKETING GUIDE

## PREFERRED EDUCATION SPONSORSHIP: \$3,500

Available for a rolling 12-month timeframe

Premier Education Sponsorship includes sponsorship of one (1) regular educational program, as well as a selection of advertising, to enhance your marketing efforts.

### Event Sponsorship

- Recognition on the sponsorship page with logo/hyperlink to your website
- One (1) event registration to the sponsored program
- Exhibit booth with pre and post-event connections at the sponsored program (in-person events only)
- Stage time during the general session (3 minutes)
- Logo on the registration website and registration pages
- Logo in chapter email marketing promotions, including the monthly events email and the chapter newsletter
- Company recognition at the sponsored program
- Ability to provide promotional giveaway/collateral material to attendees (in-person events only)
- Post-event attendee list following the sponsored program

### Advertising

- One (1) advertisement included in the monthly chapter newsletter
- One (1) month advertisement on the chapter website
- One (1) advertisement included in the monthly events email
- Two (2) social media posts

## SELECT EDUCATION SPONSORSHIP: \$2,500

Individual Education Sponsorship includes sponsorship at one (1) regular educational program.

- Recognition on the sponsorship page with logo/hyperlink to your website
- One (1) event registration to the sponsored program
- Exhibit booth with pre and post-event connections at sponsored program (in-person events only)
- 60-second promotional video played during the program
- Logo on the registration website and registration pages
- Logo in chapter email marketing promotions, including the monthly events email and the chapter newsletter
- Company recognition at the sponsored program
- Ability to provide promotional giveaway/collateral material to attendees (in-person events only)
- Post-event attendee list following the sponsored program





MPI

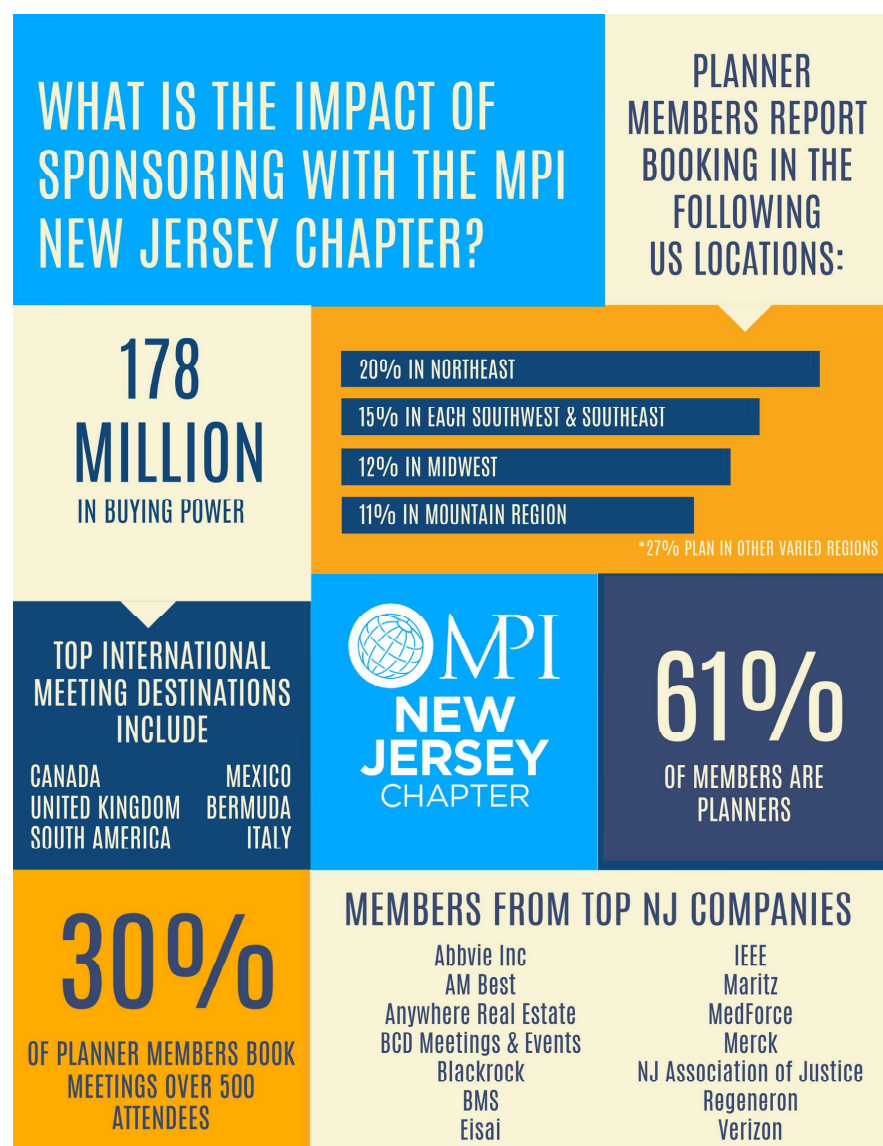
NEW JERSEY  
CHAPTER

2026 SPONSORSHIP & MARKETING GUIDE

## EDUCATION EXHIBITOR: \$1,250

Education Exhibitor includes a tabletop at one (1) regular educational program.

- Recognition on the sponsorship page with logo/hyperlink to your website
- One (1) event registration to the sponsored program
- Exhibit booth with pre and post event connections at sponsored program (in-person events only)
- Logo on the registration website and registration pages
- Logo in chapter email marketing promotions, including the monthly events email and the chapter newsletter
- Company recognition at the sponsored program
- Ability to provide promotional giveaway/collateral material to attendees (in-person events only)
- Post-Event Attendee list following the sponsored program



Contact Heather Kresge, [admin@mpinewjersey.org](mailto:admin@mpinewjersey.org) to secure your sponsorship!



## NEW JERSEY CHAPTER

### 2026 SPONSORSHIP & MARKETING GUIDE SIGNATURE EVENT - MEETS CONFERENCE

## ABOUT THE MPI NEW JERSEY CHAPTER MEETS CONFERENCE

Established in 2021 as a virtual half-day event, the MPI New Jersey Chapter MEETS Conference attracts professionals in the meetings, events, hospitality, travel, and sales industries from across the tri-state area. The 2022 MEETS Conference received a RISE Award for Innovative Education and the MPI New Jersey Chapter continues to focus on elevating the event each year.

An anticipated 150+ attendees will gather in March 2026 and the program will include an exclusive and fun conference party, site visits, and more. A dynamic host of knowledgeable subject matter experts, offering over 6 CEs, will complement an engaging supplier and buyer trade show during this time of learning and networking.

The Sponsor and Exhibitor offerings at the MEETS Conference provide a variety of opportunities at different price-points to meet business budgets of all sizes. Take a look and reserve your space to get the exposure and connections you desire.



## BREAKFAST SPONSORSHIP: \$3,500

### 1 Opportunity Available

- Two (2) event registrations
- Exhibit booth with pre and post-event connections
- Opportunity to put branded materials on breakfast tables
- Stage time during breakfast (3 minutes)
- Participation in a speed-networking session with planner attendees
- Logo on welcome and general session slides with closing session recognition
- Logo on the registration website and registration pages
- Pre-event attendee list for one-time use
- Post-event attendee list

### Advertising Through Chapter Channels

- One (1) month of advertisement on the chapter website
- One (1) advertisement in the monthly chapter newsletter
- One (1) advertisement included in the monthly events email
- Two (2) social media posts

Contact Heather Kresge, [admin@mpinewjersey.org](mailto:admin@mpinewjersey.org) to secure your sponsorship!



**MPI**

**NEW JERSEY**  
CHAPTER

**2026 SPONSORSHIP & MARKETING GUIDE**  
**SIGNATURE EVENT - MEETS CONFERENCE**

## **LUNCH SPONSORSHIP: \$3,500**

### **1 Opportunity Available**

- Two (2) event registrations
- Exhibit booth with pre and post-event connections
- Opportunity to put branded materials on lunch tables
- Stage time during lunch (3 minutes)
- Participation in a speed-networking session with planner attendees
- Logo on welcome and general session slides with closing session recognition
- Logo on the registration website and registration pages
- Pre-event attendee list for one-time use
- Post-event attendee list

### **Advertising Through Chapter Channels**

- One (1) month of advertisement on the chapter website
- One (1) advertisement in the monthly chapter newsletter
- One (1) advertisement included in the monthly events email
- Two (2) social media posts

## **BREAK SPONSORSHIP: \$3,500**

### **1 Opportunity Available**

- Two (2) event registrations
- Exhibit booth with pre and post-event connections
- 60-second promotional video played before each break
- Participation in a speed-networking session with planner attendees
- Logo on welcome and general session slides with closing session recognition
- Logo on the registration website and registration pages
- Pre-event attendee list for one-time use
- Post-event attendee list

### **Advertising Through Chapter Channels**

- One (1) month of advertisement on the chapter website
- One (1) advertisement in the monthly chapter newsletter
- One (1) advertisement included in the monthly events email
- Two (2) social media posts

Contact Heather Kresge, [admin@mpinewjersey.org](mailto:admin@mpinewjersey.org) to secure your sponsorship!





MPI®

NEW JERSEY  
CHAPTER

2026 SPONSORSHIP & MARKETING GUIDE  
SIGNATURE EVENT - MEETS CONFERENCE

## CORPORATE SOCIAL RESPONSIBILITY (CSR) SPONSORSHIP: \$3,500

### 1 Opportunity Available

- Two (2) event registrations
- Exhibit booth with pre and post-event connections
- Opportunity to brand the CSR space
- Stage time to present the CSR details to attendees
- A portion of sponsorship will be donated to the conference-supported charity
- Participation in a speed-networking session with planner attendees
- Logo on welcome and general session slides with closing session recognition
- Logo on the registration website and registration pages
- Pre-event attendee list for one-time use
- Post-event attendee list

### Advertising Through Chapter Channels

- One (1) month of advertisement on the chapter website
- One (1) advertisement in the monthly chapter newsletter
- One (1) advertisement included in the monthly events email
- Two (2) social media posts

## KEYNOTE SPEAKER SPONSORSHIP: \$3,500

### 1 Opportunity Available

- Two (2) event registrations
- Exhibit booth with pre and post-event connections
- Stage time (3 minutes) to promote brand
- Introduction of the keynote speaker on the main stage
- Participation in a speed-networking session with planner attendees
- Logo on welcome and general session slides with closing session recognition
- Logo on the registration website and registration pages
- Pre-event attendee list for one-time use
- Post-event attendee list

### Advertising Through Chapter Channels

- One (1) month of advertisement on the chapter website
- One (1) advertisement in the monthly chapter newsletter
- One (1) advertisement included in the monthly events email
- Two (2) social media posts

Contact Heather Kresge, [admin@mpinewjersey.org](mailto:admin@mpinewjersey.org) to secure your sponsorship!



MPI®

NEW JERSEY  
CHAPTER

2026 SPONSORSHIP & MARKETING GUIDE  
SIGNATURE EVENT - MEETS CONFERENCE

## MAIN STAGE SPEAKER SPONSORSHIP: \$2,500

2 Opportunities Available

- One (1) event registration
- Exhibit booth with pre and post-event connections
- 60-second promotional video played or stage time (1 minute)
- Introduction of one of the main stage speakers
- Participation in a speed-networking session with planner attendees
- Logo on welcome and general session slides with closing session recognition
- Logo on the registration website and registration pages
- Pre-event attendee list for one-time use
- Post-event attendee list

### Advertising Through Chapter Channels

- One (1) advertisement in the monthly chapter newsletter
- One (1) advertisement included in the monthly events email
- Two (2) social media posts

## BREAKOUT SPEAKER SPONSORSHIP: \$1,500

4 Opportunities Available

- One (1) event registration
- Exhibit booth with pre and post-event connections
- 60-second promotional video played or stage time (1 minute)
- Introduction of one of the breakout speakers
- Participation in a speed-networking session with planner attendees
- Logo on welcome and general session slides with closing session recognition
- Logo on the registration website and registration pages
- Pre-event attendee list for one-time use
- Post-event attendee list

### Advertising Through Chapter Channels

- One (1) advertisement in the monthly chapter newsletter
- One (1) advertisement included in the monthly events email
- Two (2) social media posts

Contact Heather Kresge, [admin@mpinewjersey.org](mailto:admin@mpinewjersey.org) to secure your sponsorship!



MPI®

NEW JERSEY  
CHAPTER

2026 SPONSORSHIP & MARKETING GUIDE  
SIGNATURE EVENT - MEETS CONFERENCE

## WELLNESS ROOM SPONSORSHIP: \$2,500

### 1 Opportunity Available

- One (1) event registration
- Exhibit booth with pre and post-event connections
- Opportunity to brand wellness room
- Participation in a speed-networking session with planner attendees
- Logo on welcome and general session slides with closing session recognition
- Logo on the registration website and registration pages
- Pre-event attendee list for one-time use
- Post-event attendee list

### Advertising Through Chapter Channels

- One (1) advertisement in the monthly chapter newsletter
- One (1) advertisement included in the monthly events email
- Two (2) social media posts

## LANYARD SPONSORSHIP: \$2,000

### 1 Opportunity Available

- One (1) event registration
- Exhibit booth with pre and post-event connections
- Logo included on attendee lanyard
- Participation in a speed-networking session with planner attendees
- Logo on welcome and general session slides with closing session recognition
- Logo on the registration website and registration pages
- Pre-event attendee list for one-time use
- Post-event attendee list

### Advertising Through Chapter Channels

- One (1) advertisement in the monthly chapter newsletter
- One (1) advertisement included in the monthly events email
- Two (2) social media posts

Contact Heather Kresge, [admin@mpinewjersey.org](mailto:admin@mpinewjersey.org) to secure your sponsorship!



**MPI**

**NEW JERSEY**  
CHAPTER

**2026 SPONSORSHIP & MARKETING GUIDE**  
**SIGNATURE EVENT - MEETS CONFERENCE**

## **TOTE BAG SPONSORSHIP: \$2,000**

### **2 Opportunities Available**

- One (1) event registration
- Exhibit booth with pre and post-event connections
- Logo included on attendee tote bag
- Participation in a speed-networking session with planner attendees
- Logo on welcome and general session slides with closing session recognition
- Logo on the registration website and registration pages
- Pre-event attendee list for one-time use
- Post-event attendee list

### **Advertising Through Chapter Channels**

- One (1) advertisement in the monthly chapter newsletter
- One (1) advertisement included in the monthly events email
- Two (2) social media posts

## **EXHIBITOR: \$1,250**

### **10 Opportunities Available**

- One (1) event registration
- Exhibit booth with pre and post-event connections
- Logo on welcome and general session slides with closing session recognition
- Logo on registration website and registration pages
- Pre-event attendee list for one-time use
- Post-event attendee list

### **Advertising Through Chapter Channels**

- One (1) advertisement in the monthly chapter newsletter OR the monthly events email



## NEW JERSEY CHAPTER

### 2026 SPONSORSHIP & MARKETING GUIDE SIGNATURE EVENT- ANNUAL GOLF EVENT

## ABOUT THE MPI NEW JERSEY CHAPTER'S ANNUAL GOLF EVENT

The Annual Golf Event has been a signature event for the MPI New Jersey Chapter for over 25 years. This event gathers suppliers from all over the country and planners from the tri-state area for a full day of networking and fun!

With over 150 attendees annually, you are certain to make new connections or reconnect with a few old friends.

Our highly anticipated Golf Event will be back for a 28th year in 2026. Join us because... **NOBODY DOES GOLF LIKE THE MPI NEW JERSEY CHAPTER!**



2026 Prices are estimated for budgeting purposes. The exact pricing and sponsorship available will be released once a location is finalized.

## GOLF FOURSOMES: \$1,550

27 Foursomes Available

Golf is one of the best ways to get hours of face time with your clients and strengthen industry connections. We play a shotgun start and best ball for an enjoyable day of play for all. This package includes breakfast, lunch, closing reception, on-course beverages, greens fees and cart fees for four (4) players. The MPI New Jersey Chapter works to assist in filling foursomes with hosted buyers.

## NON-GOLFER ACTIVITY FOURSOMES: \$1,000

10 Foursomes Available

Each year, the MPI New Jersey Chapter offers a fun activity for guests not looking for a traditional golf round. This opportunity to host a "foursome" is ideal for those that want to entertain clients and strengthen industry connections. Guests will enjoy an afternoon of fun and networking, before joining all the golfers and sponsors for the Closing Reception. This package includes lunch, closing reception, beverages, and an activity for four (4) players. The MPI New Jersey Chapter works to assist in filling foursomes with hosted buyers.

Foursomes may be split between multiple suppliers, inquire with chapter.





MPI

NEW JERSEY  
CHAPTER

2026 SPONSORSHIP & MARKETING GUIDE  
SIGNATURE EVENT - ANNUAL GOLF EVENT

## CLOSING RECEPTION SPONSORSHIP: \$6,500

### 1 Opportunity Available

- One (1) golf or non-golfer activity foursome, including breakfast, lunch, closing reception, and beverages for four (4) players.
- Sponsorship of the closing reception
- Closing reception stage time (5 minutes)
- Logo on sponsor signage at registration and closing reception
- Logo in select promotional materials
- Post-event attendee list

Closing reception sponsor has the option to decorate the closing reception room to match your company's theme and provide giveaways to participants.

## BEVERAGE STATION SPONSORSHIP: \$5,500

### 1 Opportunity Available

- Two (2) event registrations with breakfast, lunch, and closing reception
- Sponsorship of on-course beverage station
- Networking opportunity with each attendee
- Logo on sponsor signage at registration and closing reception
- Logo in select promotional materials
- Post-event attendee list

Sponsor has the option to decorate the beverage station to match your company's theme and provide giveaways to participants.

## GRILL STATION SPONSORSHIP: \$5,500

### 1 Opportunity Available

- Two (2) event registrations with breakfast, lunch, and closing reception
- On-course sponsorship of the lunch grill station
- Networking opportunity with each golfer
- Logo on sponsor signage at registration and closing reception
- Logo in select promotional materials
- Post-event attendee list

Sponsor has the option to decorate the grill station location to match your company's theme and provide giveaways to participants.



**MPI**

**NEW JERSEY**  
CHAPTER

2026 SPONSORSHIP & MARKETING GUIDE  
SIGNATURE EVENT - ANNUAL GOLF EVENT

## **DRONE SPONSORSHIP: \$4,000**

### **1 Opportunity Available**

- One (1) event registration with breakfast, lunch, and closing reception
- Exhibit booth at the location of the drone drop
- Networking opportunity with each attendee
- Logo on drone
- Logo on sponsor signage at registration and closing reception
- Logo in select promotional materials
- Post-event attendee list

Sponsor must provide a minimum of one grand prize giveaway for the winner.

## **BEVERAGE CART SPONSORSHIP: \$3,500**

### **2 Opportunities Available**

- One (1) event registration with breakfast, lunch, and closing reception
- On-course sponsorship of beverage cart
- Networking opportunity with each attendee
- Logo on sponsor signage at registration and closing reception
- Logo in select promotional materials
- Post-event attendee list

Sponsor has the option to decorate the cart to match your company's theme and provide giveaways to participants.

## **BREAKFAST SPONSORSHIP: \$3,500**

### **1 Opportunity Available**

- One (1) event registration with breakfast, lunch and closing reception
- Sponsorship of the breakfast
- Networking opportunity with each attendee
- Logo on sponsor signage at registration and closing reception
- Logo in select promotional materials
- Post-event attendee list

Sponsor has the option to decorate the breakfast location to match your company's theme and provide giveaways to participants.



MPI

NEW JERSEY  
CHAPTER

2026 SPONSORSHIP & MARKETING GUIDE  
SIGNATURE EVENT - ANNUAL GOLF EVENT

## NON-GOLFER ACTIVITY SPONSORSHIP: \$3,500

1 Opportunity Available

- One (1) non-golfer activity foursome
- Opportunity to address all non-golfer attendees during the event (3 minutes)
- Logo on sponsor signage at registration and closing reception
- Logo in select promotional materials
- Post-event attendee list

Sponsor has the option to decorate to match your company's theme and provide giveaways to participants.

## HOLE SPONSORSHIP: \$1,500

18 Opportunities Available

- Two (2) event registrations with breakfast, lunch, and closing reception
- On-course exhibit booth at tee box
- Networking opportunity with each golfer
- Logo on sponsor signage at registration and closing reception
- Logo in select promotional materials
- Post-event attendee list

Sponsor has the option to decorate the booth area to match your company's theme and provide giveaways to participants.

## SNACK CART SPONSORSHIP: \$1,000

1 Opportunity Available

- One (1) event registration with breakfast, lunch, and closing reception
- On-course sponsorship of snack cart
- Networking opportunity with each attendee
- Logo on sponsor signage at registration and closing reception
- Logo in select promotional materials
- Post-event attendee list

Sponsor has the option to decorate the cart to match your company's theme.

Cart Sponsor must provide a minimum of 125 snacks to distribute on the course.



**MPI**

**NEW JERSEY**  
CHAPTER

2026 SPONSORSHIP & MARKETING GUIDE  
SIGNATURE EVENT - ANNUAL GOLF EVENT

## **BOTTLED WATER CART SPONSORSHIP: \$1,000**

### **1 Opportunity Available**

- One (1) event registration with breakfast, lunch, and closing reception
- On-course sponsorship of the bottled water cart
- Networking opportunity with each attendee
- Logo on sponsor signage at registration and closing reception
- Logo in select promotional materials
- Post-event attendee list

Sponsor has the option to decorate the cart to match your company's theme.

Cart Sponsor must provide a minimum of 125 bottles of water to distribute on the course.

## **AROMATHERAPY CART SPONSORSHIP: \$1,000**

### **1 Opportunity Available**

- One (1) event registration with breakfast, lunch, and closing reception
- On-course sponsorship of the aromatherapy cart
- Networking opportunity with each attendee
- Logo on sponsor signage at registration and closing reception
- Logo in select promotional materials
- Post-event attendee list

Sponsor has the option to decorate the cart to match your company's theme.

Cart Sponsor must provide a minimum of 100 towels to distribute on the course.

## **CIGAR CART SPONSORSHIP: \$1,000**

### **1 Opportunity Available**

- One (1) event registration with breakfast, lunch, and closing reception
- On-course sponsorship of the cigar cart
- Networking opportunity with each attendee
- Logo on sponsor signage at registration and closing reception
- Logo in select promotional materials
- Post-event attendee list

Sponsor has the option to decorate the cart to match your company's theme.

Cart Sponsor must provide a minimum of 50 cigars to distribute on the course.



MPI

NEW JERSEY  
CHAPTER

2026 SPONSORSHIP & MARKETING GUIDE  
SIGNATURE EVENT - ANNUAL GOLF EVENT

## FLAG SPONSORSHIP: \$1,000

### 1 Opportunity Available

- One (1) event registration with breakfast, lunch, and closing reception
- Company logo displayed on course flags at each of the 18 holes
- Logo on sponsor signage at registration and closing reception
- Logo in select promotional materials
- Post-event attendee list

## GOLF CART SPONSORSHIP: \$750

### 1 Opportunity Available

- One (1) event registration with breakfast, lunch, and closing reception
- Company logo displayed on all golf carts
- Logo on sponsor signage at registration and closing reception
- Logo in select promotional materials
- Post-event attendee list

## PUTTING CONTEST SPONSORSHIP: \$750

### 1 Opportunity Available

- One (1) event registration with breakfast, lunch, and closing reception
- Sponsorship of pre-tournament putting competition during breakfast
- Logo on sponsor signage at registration and closing reception
- Logo in select promotional materials
- Post-event attendee list

Sponsor has the option to decorate the putting green to match your company's theme.

Sponsor must provide two prizes to be awarded to contest winners.



FIND OUT WHY NOBODY  
DOES GOLF QUITE LIKE  
THE MPI NEW JERSEY  
CHAPTER!

OUR PLANNER  
MEMBERS REPORT  
BOOKING IN THE  
FOLLOWING  
US LOCATIONS:

**\$178  
MILLION**

IN BUYING POWER

20% IN NORTHEAST

15% IN EACH SOUTHWEST & SOUTHEAST

12% IN MIDWEST

11% IN MOUNTAIN REGION

**165  
ATTENDEES**

PARTICIPATE FOR A DAY  
OF NETWORKING &  
OF COURSE FUN!



**8**

HOURS OF FACE TO FACE  
TIME WITH 80  
PLANNER GUESTS

**30%**

OF PLANNER MEMBERS BOOK  
MEETINGS OVER 500  
ATTENDEES

## ATTENDEES FROM TOP COMPANIES

AMERICAN EXPRESS  
CONFERENCE DIRECT  
EISAI

EMOTA, part of Inizio Engage XD  
JONES LANG LASALLE  
HEALTH & WELLNESS PARTNERS

MEDFORCE  
MARITZ  
McCARTER & ENGLISH  
MEDFORCE  
PRUDENTIAL  
TERUMO MEDICAL CORP



## NEW JERSEY CHAPTER

### 2026 SPONSORSHIP & MARKETING GUIDE SIGNATURE EVENT - CMP/CMM RECOGNITION EVENT

## ABOUT THE ANNUAL CMP/CMM RECOGNITION EVENT

Established in 2016, this event brings together and honors those in our community who have dedicated themselves to elevate our profession through continuing education by earning a CMP or CMM designation. The event has long been a favorite event for our members to connect with like-minded professionals and grow their network.

The Annual CMP/CMM Recognition Event will take place in the fall of 2026, and we could not be more excited to give our attendees the opportunity to chat, connect, and collaborate. We will also present the Joanne Dennison, CMP Award, recognizing excellence in our field.

The Sponsor and Exhibitor offerings at the Annual CMP/CMM Recognition Event provide opportunities for a variety of sponsors to participate and support the event. Take a look and reserve your space to get the exposure and connections you desire.



**2026 Prices are estimated for budgeting purposes. The exact pricing will be released once a location is finalized.**

## PREMIER SPONSOR: \$5,000

### 1 Opportunity Available

- One (1) event registration
- Podium/screen time available at program (3 minutes)
- Company recognition at the program
- Company logo on the registration website and registration pages
- Company logo in select promotional materials
- Ability to provide promotional giveaway/collateral material to attendees
- Pre-event attendee list for one-time use
- Post-event attendee list following the program

### Advertising Through Chapter Channels

- One (1) month of advertisement on the chapter website
- One (1) advertisement in the monthly chapter newsletter
- One (1) advertisement included in the monthly events email
- Two (2) social media posts

)

Contact Heather Kresge, [admin@mpinewjersey.org](mailto:admin@mpinewjersey.org) to secure your sponsorship!



MPI®

NEW JERSEY  
CHAPTER

2026 SPONSORSHIP & MARKETING GUIDE  
SIGNATURE EVENT - CMP/CMM RECOGNITION EVENT

## SPEAKER SPONSOR: \$3,500

### 1 Opportunity Available

- One (1) event registration
- Recognized as the speaker sponsor and the ability to introduce the speaker
- Company recognition at the sponsored program
- Company logo on the registration website and registration pages
- Company logo in select promotional materials
- Ability to provide promotional giveaway/collateral material to attendees
- Pre-event attendee list for one-time use
- Post-event attendee list following the program

### Advertising Through Chapter Channels

- One (1) month of advertisement on the chapter website
- One (1) advertisement in the monthly chapter newsletter
- Two (2) social media posts

## CMP/CMM LOUNGE SPONSOR: \$3,500

### 1 Opportunity Available

- One (1) event registration
- Ability to welcome CMP and CMM Attendees into the lounge and brand the space
- Company recognition at the sponsored program
- Company logo on the registration website and registration pages
- Company logo in select promotional materials
- Ability to provide promotional giveaway/collateral material to attendees
- Pre-event attendee list for one-time use
- Post-event attendee list following the program

### Advertising Through Chapter Channels

- One (1) month of advertisement on the chapter website
- One (1) advertisement in the monthly chapter newsletter
- Two (2) social media posts

Contact Heather Kresge, [admin@mpinewjersey.org](mailto:admin@mpinewjersey.org) to secure your sponsorship!



MPI®

NEW JERSEY  
CHAPTER

2026 SPONSORSHIP & MARKETING GUIDE  
SIGNATURE EVENT - CMP/CMM RECOGNITION EVENT

## GIFT SPONSOR: \$2,000

### 1 Opportunity Available

- One (1) event registration
- Recognized sponsor of the gift giveaway to CMP/CMM attendees
- Company logo on the gift bag
- Company recognition at the sponsored program
- Company logo on the registration website and registration pages
- Company logo in select promotional materials
- Ability to provide promotional giveaway/collateral material to attendees
- Pre-Event attendee list for one-time use
- Post-event attendee list following the program

### Advertising Through Chapter Channels

- One (1) advertisement in the monthly chapter newsletter
- Two (2) social media posts

## TOAST SPONSOR: \$1,000

### 1 Opportunity Available

- One (1) event registration
- Recognized sponsor of the congratulatory toast
- Company recognition at the sponsored program
- Company logo on the registration website and registration pages
- Company logo in select promotional materials
- Ability to provide promotional giveaway/collateral material to attendees
- Pre-event attendee list for one-time use
- Post-event attendee list following the program

### Advertising Through Chapter Channels

- One (1) advertisement in the monthly chapter newsletter
- Two (2) social media posts

## GIFT BAG SPONSOR: \$1,000

### 4 Opportunities Available

- One (1) event registration
- Company logo on gift bag given away to all CMP/CMM attendees
- Company recognition at the sponsored program
- Company logo on the registration website and registration pages
- Company logo in select promotional materials
- Ability to provide promotional giveaway/collateral material to attendees
- Pre-event attendee list for one-time use
- Post-event attendee list following the program

### Advertising Through Chapter Channels

- One (1) advertisement in the monthly chapter newsletter
- Two (2) social media posts

Contact Heather Kresge, [admin@mpinewjersey.org](mailto:admin@mpinewjersey.org) to secure your sponsorship!